

Extra just read

Exclusive—Government Autopsy Records Kept Secret for 12 Years Prove...

Incredible new evidence — published here for the first time ever — reveals conclusively that the Warren Commission was wrong and that Lee Harvey Oswald could not have been the lone assassin of President Kennedy.

Top secret documents hidden for years in the National Archives show clearly that there had to be at least two gunmen — one behind the President and one ahead of him, says veteran Kennedy assassination investigator Harold Weisberg.

He says the new evidence reveals that the wound in the President's neck was actually much lower than the one in an artist's sketch shown to — and accepted by — the Warren Commission.

"Now for the first time we have proof that it was impossible for the bullet to exit from JFK's throat, as the Warren Commission claimed," Weisberg told The ENQUIRER in an exclusive interview.

"This means there were shots fired from two locations — resulting in one wound at the base of Kennedy's throat and the other in his back. And it means the commission's findings that Oswald was the only assassin are completely false."

Not only do the stunning documents — which Weisberg obtained after a 9-year court battle — blow apart the single-gunner theory, but they also reveal that:

- JFK's personal physician twice verified in writing that the bullet in Kennedy's back was actually several inches lower than in the artist's sketch shown to the Warren Commission.

- Military doctors who participated in the autopsy were warned they'd be court-martialed if they talked about it.
- Weisberg — who has written four books on JFK's assassination — recently obtained the super-secret Kennedy medical documents from the National Archives. They include preliminary autopsy sketches and the official death certificate.

The investigator is presently writing his fifth book, "Whitewash 5," which contains the startling information in this article, plus documents indicating a conspiracy to kill JFK, and a government cover-up.

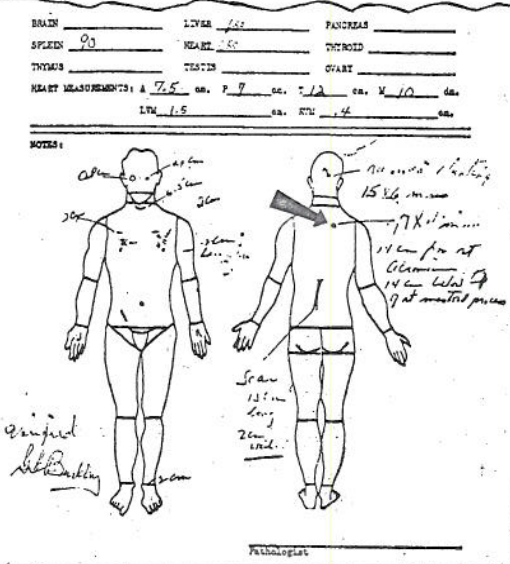
While the Warren Commission was presented with misleading evidence in the artist's sketch, Weisberg says the commission members were also presented with unsigned copies of the JFK body charts — diagrams showing the location of the President's wounds.

"The signature of Admiral George Burkley, the President's doctor — who was present both at the Dallas hospital and later at the U.S. Naval Hospital in Bethesda, Md., where the autopsy took place — did not appear on the copies of those charts. And because of this the commission members dismissed the charts as only rough approximations," Weisberg explained.

"But if the members had known the charts had been signed by Admiral Burkley — who wrote 'verified' next to his signature. — I'm sure they would have considered the charts, as accurate evidence. And I'm sure they would have concluded there was more than just one gunman."

Said Weisberg: "I believe

# Warren Report on JFK Assassination Is Wrong



JFK'S PHYSICIAN, Admiral George Burkley, verified that bullet wound in President's back was lower than the Warren Commission reported.

**ENQUIRER SKETCH:** According to Warren Report, one bullet hit JFK at (1) and exited at (3). But new evidence reveals that this bullet entered his back at (2) and could not have caused the wound at (3). Therefore, the wound at (3) must have been caused by a bullet that was fired from the front.

**AUTOPSY REPORT,** until now a super-secret document, shows (arrow) that the bullet that hit Kennedy in the back was several inches lower than in the sketch submitted to the Warren Commission. Adm. Burkley, the President's personal doctor, signed and verified the report (bottom left). But, according to investigator, the signature did not appear on copy seen by commission.

Weisberg — that the commission's conclusions are wildly inaccurate.

The commission concluded that 3 shots were fired by Lee Harvey Oswald — the first hitting the curb, the second passing through the President's neck and wounding then Governor John Connally, and the third and fatal shot striking the President in the head.

"But this can't be true," Weisberg insists. "You see, the artist's sketch used as medical evidence shows the

second bullet entering the back of JFK's neck at a downward angle and passing out the base of his throat. According to the new evidence that's impossible."

A copy of JFK's death certificate verified by Admiral Burkley indicates that the second bullet struck Kennedy in the back "about the level of the third thoracic vertebra" — well below the level of the neck. The original autopsy body charts — printed here — confirm this.

Said Weisberg: "The only way a bullet heading DOWNWARD through the President's back could turn and then go up again and exit through the base of his throat would be if the bullet deflected off a bone. And nowhere in the autopsy report is there any mention of this happening. In fact, the autopsy doctors agree this did NOT happen."

"Now we see for the first time that the back wound and the one at the base of the throat came from two different directions."

"Because bullet fragments were found in the President's body, I believe that at least two snipers used fragmentation bullets, which disintegrate after they enter the flesh."

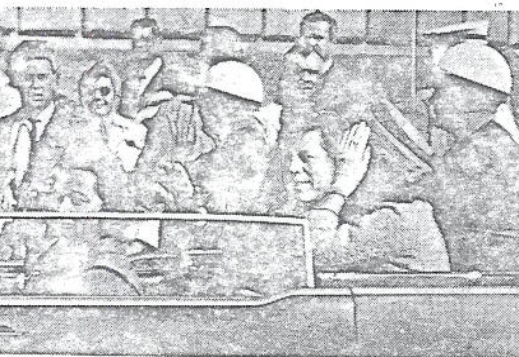
"This would explain why there are no exit wounds for either bullet — because the bullets simply went to pieces in the body."

Strangely, Navy Surgeon General, Admiral Edward C. Kenney, ordered that the actual path of the bullets through JFK's body not be traced.

The Admiral expressed a wish that the body be disfigured as little as possible, because of the Kennedy family's

the signed copy of the autopsy body charts was deliberately withheld from the commission by people who wanted the members to accept the lone assassin theory."

The shocking discrepancies uncovered by the new evidence appearing in The ENQUIRER can mean only one thing, says



JFK RIDING IN MOTORCADE in Dallas next to wife Jackie and behind Governor and Mrs. John Connally of Texas. Only seconds later, the President was shot.

## ENQUIRER READER SERVICE

If you have a question about something you've read in The ENQUIRER, we'll be glad to give you a carefully researched answer. Ann Bell and her Reader Service Dept. want you to know that the information is yours for the asking. Maybe you'd like to know more about a person, organization or service mentioned in our publication. For a reply that's as prompt as we can make it, write to: Ann Bell, Reader Service, NATIONAL ENQUIRER, Lantana, Fla. 33462. Be sure to include your return address.

"sensitivity" — although he had no objection to the massive "Y" incision which opened up JFK's chest cavity.

"Once the bullet left Kennedy's throat, according to the Warren Report, it supposedly hit Governor Connally," Weisberg said.

"It was supposed to enter his back, pass through his chest, then through his wrist — leaving fragments — and then lodge in his thigh — again leaving fragments. Magically, it emerges under the mattress of a stretcher at the Dallas hospital as if asking to be found — and in almost perfect condition — despite the fragments left in the Governor."

Four days after the autopsy, on Nov. 26, 1963, a memo from Navy Captain J.H. Stover, Commanding Officer of the U.S. Naval Medical School, warned naval doctors who participated in the procedure to keep their mouths shut — or risk courts-martial. The memo quoted orders from Admiral Kenney.

"I've confirmed through my investigations that this memo was received by all military personnel involved in the autopsy," Weisberg said.

Two days before the memo appeared, Commander James Humes, who wrote the autopsy report presented as evidence to the Warren Commission, had already signed an affidavit affirming that he had burned certain preliminary draft notes concerning the autopsy, which he supervised.

Today Admiral Burkley is retired and living near the U.S. Naval Hospital in Bethesda, Md., where the JFK autopsy was performed. Humes is now a civilian doctor practicing in Detroit.

When they were contacted by The ENQUIRER and asked about the new evidence, both declined to comment.

Senator Richard Schweiker (R.-Pa.), who's leading Congressional efforts to have the Kennedy assassination case reopened, told us:

"As more new evidence comes to light, a new look at the assassination of President Kennedy is inevitable."

"The effect of all these recent revelations has been to devastate the credibility of the Warren Commission's findings."

— ROD GIBSON

OCT. 17, 1975