

The Lonely Heir

Ted May Have no Choice

By Robert J. Donovan
Times-Post Service

As the inheritor of the legend of John F. Kennedy and Robert F. Kennedy, Senator Edward Kennedy holds a unique place among the American people. That he will sooner or later emerge as a national political leader is a foregone conclusion.

"Teddy is the best politician in the family," John Kennedy once remarked.

"Teddy Kennedy," James Farley has said, "is going to wind up president."

Both John and Robert Kennedy were driven by circumstances to seek office before their time — John by the wartime death of his elder brother, Joseph P. Kennedy Jr., who was to have carried the family banner in politics, and Robert by the assassination of John.

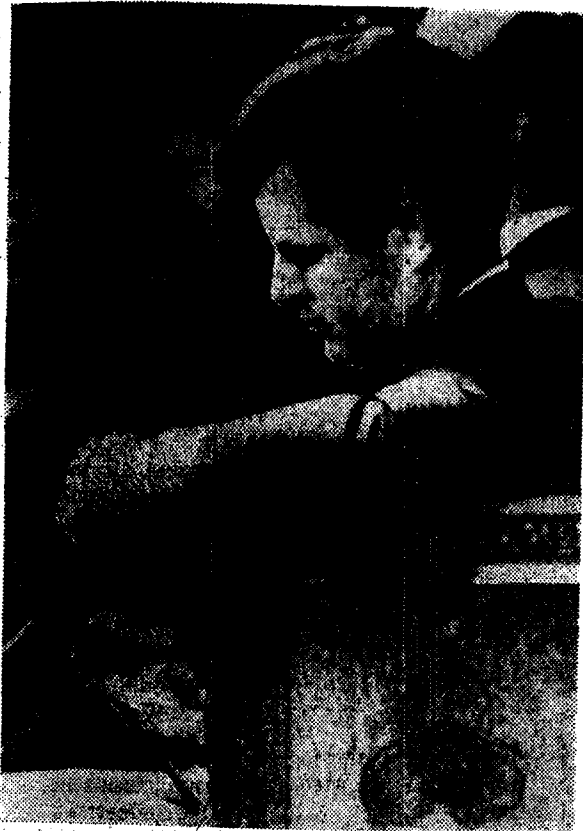
Now because of the assassination of Robert, Ted Kennedy will surely be forced into a faster pace than he had ever contemplated.

TICKET

Already many Democrats would like to see him nominated in August for vice president on a ticket headed by Vice President Hubert Humphrey.

Certainly, it would be a potent ticket but this is hardly the time for sounding out Ted Kennedy's thoughts. Running so soon after Robert's death might seem to him gruesome and tasteless.

On the other hand, with the country in the state that it is, Ted Kennedy's nomination as vice president might have a calming effect, particularly on the young and on the Negroes. Conceivably the national interest might be the rationale for Ted Kennedy's picking up at this time the torch wrenched away from his two brothers.



A. Wirephoto
SENATOR EDWARD M. KENNEDY
A man alone with his cross

A strong family resemblance ties Ted Kennedy to his two older brothers. His voice, for example, is so much like that of the late president's that talking with him on the telephone is an eerie experience at first.

DIFFERENT

Nevertheless in manner, appearance and approach Ted Kennedy is different from John and Robert. Though the "baby" of the family, he is physically the largest, being heavier and more broad-shouldered than his brothers.

In manner he is in public at least more reserved and deferential. As a result there is nothing abrasive about him, as there sometimes was about Robert, and he is more apt to make friends than enemies.

Ted Kennedy has been closer to the Johnson Administration than Robert ever was, which might add a touch of plausibility to talk of his running with Humphrey.

SENATOR

Ted Kennedy has been more a man of the Senate than either John, whose seat he filled, or Robert. Where the two older brothers tended to use the Senate as a base for national operations, Edward settled down to become a Senator for a long period of time. More than in the case of his brothers the Senate became for him a way of life.