

SFChronicle SFChronicle SEP 3 0 1974

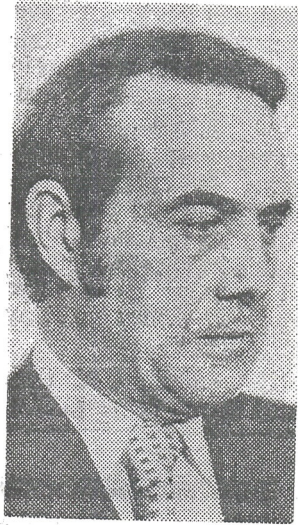
# Sen. Dole Faces Fierce Vote Fight--Blames Ford

Washington

Republican Senator Robert Dole, fighting an uphill election battle in Kansas, yesterday laid a large share of the blame on President Ford for his underdog status in the polls. When asked on the CBS program "Face the Nation" whether Mr. Ford had become an issue in the campaign where Democratic Representative William R. Roy is shown far ahead in the traditionally Republican state, Dole replied, "I think so."

Dole said Kansas Republicans had been encouraged when Mr. Ford first took office, but "along came the pardon of former President Richard M. Nixon and amnesty. I really don't need any more help of that kind before November."

In the latest poll, released last Tuesday by Central Research Corp. of Topeka, Kan., 50 per cent of the voters queried preferred Roy, 42 per cent picked Dole and eight per cent were undecided.



ROBERT DOLE  
Up for re-election

Dole said plans were made shortly after Mr. Ford's succession to office for presidential appearances in the Sunflower state but now, Dole said, "whether he comes to Kansas is a decision that hasn't been made."

Dole was chosen chairman of the Republican National Committee upon the recom-

mendation of former President Nixon.

He listed "the rise and fall of Richard M. Nixon" as one of the three chief issues in the campaign, with his record as a senator and his role as Republican national chairman as the others.

The senator accused his opponent of waging "a Watergate-style campaign," but he claimed, "we're going to be vindicated at the polls."

Roy, appearing in face-to-face debate with his opponent on national television — an unusual format for candidates in a single-state election — insisted that "this has not been a staccato of Watergate."

However, Roy continued, "Many people think Senator Dole, as Republican national chairman, knew or should have known about Watergate. I have no reason to believe that Senator Dole knew . . . whether he should have known" depends on the inner processes of the Republican party.

Associated Press