

# Sketches of the Nine Judges Who Are

## David Lionel Bazelon

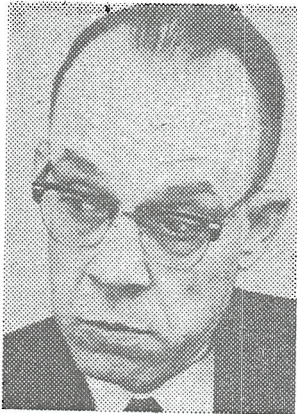
Appointed to court by President Truman in 1949 and has served as chief judge since 1962 . . . born in Superior, Wis., on Sept. 3, 1909



. . . grew up in Chicago and earned law degree at Northwestern University . . . practiced law in Chicago before appointment as Assistant Attorney General in 1947 . . . 1954 ruling on Monte Wayne Durham became standard on judging criminal insanity . . . close friend of liberals on Supreme Court and a bitter antagonist of Chief Justice Warren E. Burger from his days on the Appeals court . . . highly regarded by liberal activists.

## Harold Leventhal

Nominated to court by President Johnson in 1965 . . . born in New York on Jan. 5, 1915 . . . graduated



from Columbia College and Columbia Law School . . . was clerk for Supreme Court Justices Stanley F. Reed and Harlan F. Stone . . . worked as lawyer for Interior Department, Office of Price Administration and Coast Guard before entering private practice in Washington . . . former general counsel to Demo-

cratic National Committee . . . regarded, with Judge McGowan, as court "swing man."

## George Edward MacKinnon

Only former politician on court, he was appointed by President Nixon in 1969 . . . born in St. Paul on April 22, 1906 . . . graduated from University of Minnesota, where he was center on the football team . . . after law school there entered private practice and served in the State Legislature . . . served one term in Congress and in 1958 was unsuccessful Republican candidate for Governor of Minnesota . . . served as research director for Nixon Vice-Presidential campaign in 1952 . . . counsel for Investors Diversified Services Inc. when named to court . . . conservative.

## Carl Eugene McGowan

Named to court by President Kennedy in 1963 . . . born



in Hymera, Ind., on May 7, 1911 . . . a graduate of Dartmouth and Columbia Law School . . . practiced law in New York, Washington and Chicago . . . served as aide to

Adlai Stevenson in Navy Department during World War II and when he was Governor of Illinois . . . at Stevenson's funeral in 1965 he eulogized "this completely civilized man doing battle for the very idea of civilization" . . . one of the "swing men" on the court who is not a member of the liberal or conservative blocs.

## Spottswood William Robinson 3d

Court's only black member, appointed by President Johnson in 1966 after three years as District Court judge . . . born in Richmond on July 26, 1916 . . . attended Virginia Union University



and received law degree from Howard University, with the highest scholastic record in school's history . . . practiced law in Richmond and was southeast regional counselor for the National Association for the Advancement of Colored People . . . taught at Howard law school and served as dean for three years . . . known as mild-mannered and intellectual . . . member, with Judges



# Hearing Appeals on the Watergate Tapes

Bazelon and Wright, of court's liberal bloc.

## Roger Robb

Appointed by President Nixon in 1969 . . . born in Bellows Falls, Vt., on July 7,



1907 . . . graduate of Yale College and law school . . . father served on court from 1906 to 1939 . . . spent eight years as Assistant United States Attorney in Washington before entering private practice . . . served as special counsel to Atomic Energy Commission during investigation of J. Robert Oppenheimer . . . handled numerous controversial cases for such clients as Bernard Goldfine, Earl Browder and Otto Otepka . . . one of court conservatives.

## Edward Allen Tamm

Served 17 years as district judge before President Johnson appointed him to Court of Appeals in 1965 . . . native of St. Paul, where he was born on April 21, 1906 . . . attended Mount St. Charles college in Helena, Mont., and graduated from University of Montana law school . . .

spent 18 years in the Federal Bureau of Investigation and



was a close aide of J. Edgar Hoover . . . caused controversy several years ago when his memorandum criticizing dress and behavior of law clerks was leaked to press . . . member of conservative bloc.

## Malcolm Richard Wilkey

Newest member of court, named by President Nixon in



1970 . . . born in Murfreesboro, Tenn., on Dec. 6, 1918

. . . a graduate of Harvard and Harvard law school . . . served as Lieutenant Colonel in Army field artillery during World War II . . . practiced law in Houston and was United States Attorney there . . . spent two years in Washington as Assistant Attorney General at end of Eisenhower Administration . . . delegate to 1960 Republican convention . . . known as most liberal of Nixon appointees.

## James Skelly Wright

Born in New Orleans on Jan. 14, 1911 . . . a graduate of Loyola University and its law school . . . served in Coast Guard during World War II . . . named United



States Attorney in New Orleans in 1948 and United States District Judge for New Orleans the following year . . . handed down a series of landmark school integration decisions and was accused of being "traitor to his class" by former friends . . . President Kennedy appointed him to Court of Appeals in 1961 . . . known as a liberal and friend of Chief Judge Bazelon.