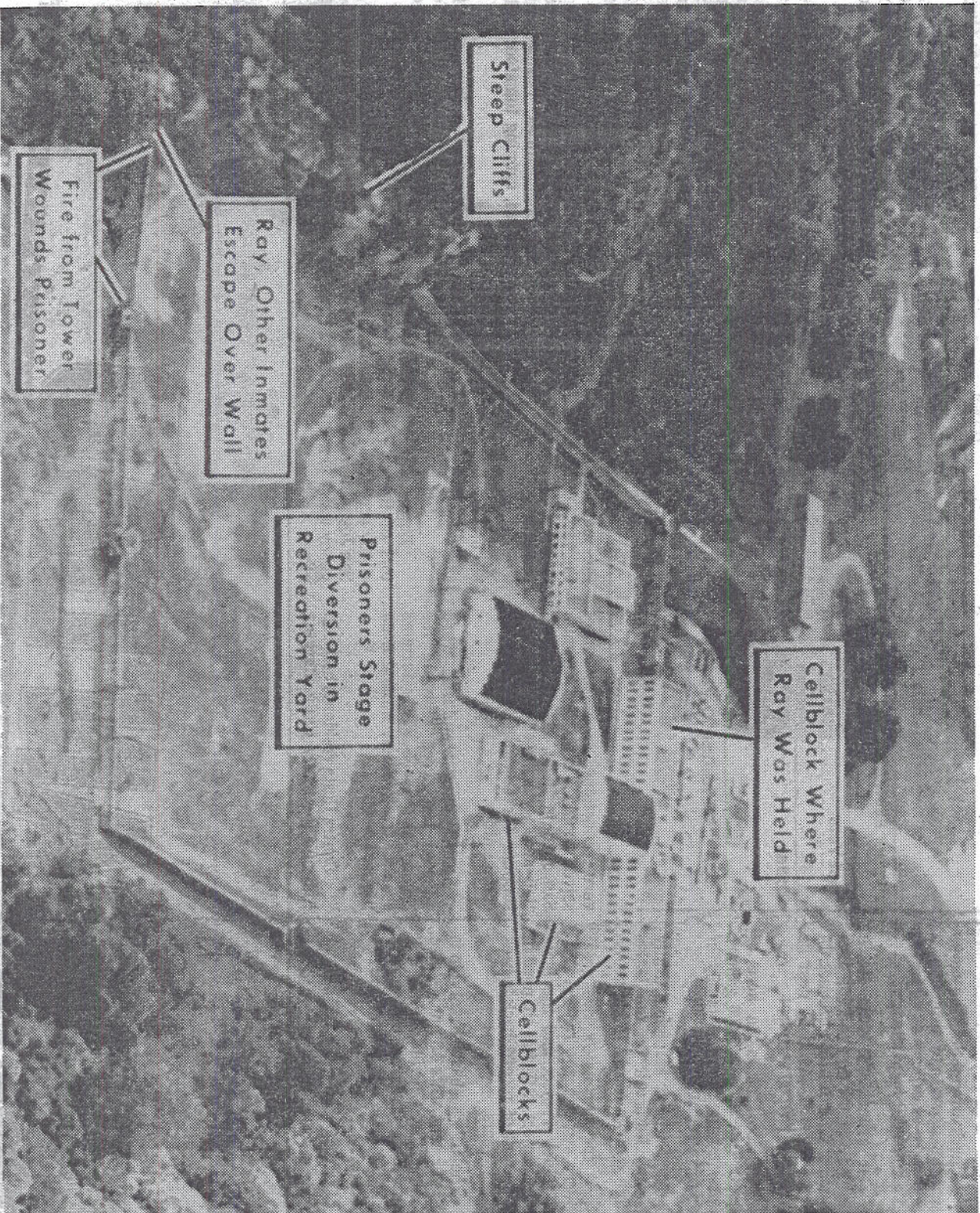


How they got out

SF Examiner

JUN 12 1977



PETROS, Tenn. (AP) — Authorities don't think James Earl Ray had help from the outside.

But they haven't any doubt that he and the inmates who went along got plenty of aid from the inside.

"Obviously this was well-organized and well-planned," said C. Murray Henderson, state correction commissioner. Here is how they got out:

Just as Ray and his companions headed for the prison's 10-foot back wall, carrying a ladder fashioned from light, prison-workshop pipe, inmates in the yard created not one, but

two diversions for the guards.

About 200 men were jolting in the cool mountain evening. A fight broke out. At least it appeared to be a fight. Then an inmate feigned an injury, a sprained ankle. Officers rushed to restore order and aid the "injured" prisoner.

At the wall, with guard towers 35 feet on either side, seven men raised the ladder. A flange hooked and secured it to the top. They climbed to a final obstacle, two strands of barbed wire charged with 2,300-volts of electricity. There was just a foot space beneath it. Some squeezed through before the

guards noticed.

Then, from a tower about 100 yards away, officers began firing shotguns and .22-caliber rifles. Jerry Wayne Ward, serving 20 to 40 years for bank robbery, was hit in the leg.

It was a minor wound. He pulled himself up and over, only to be captured on the other side.

By then Ray and five others had scrambled into the woods.

A spokesman for the state said inmates at Brushy Mountain, Tennessee's only exclusively maximum security prison, usually are very closely super-

vised.

Inmates live two to a cell and dine in their cells. They are, however, allowed to gather in the exercise yard for a time each evening after 6 p.m.

The spokesman said only problem inmates, security risks for example, are assigned to the facility. The ratio of guards to prisoners is nearly one-to-one. At the state's medium and minimum security facilities the men live in dormitories and the grounds resemble a college campus except for chain link fences.

But Brushy Mountain, he said, "is like a fortress."