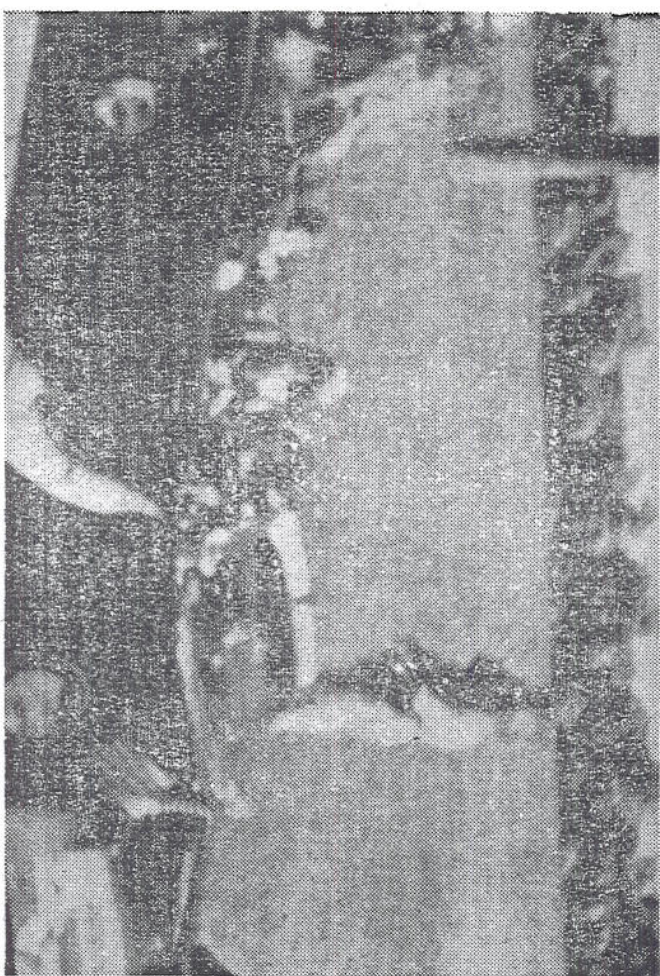


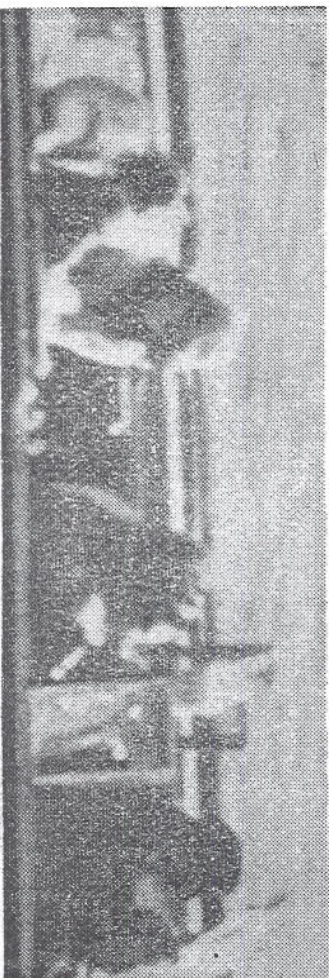
COMM. BULLETIN Nov 29 1963

New Pictures Of Assassination

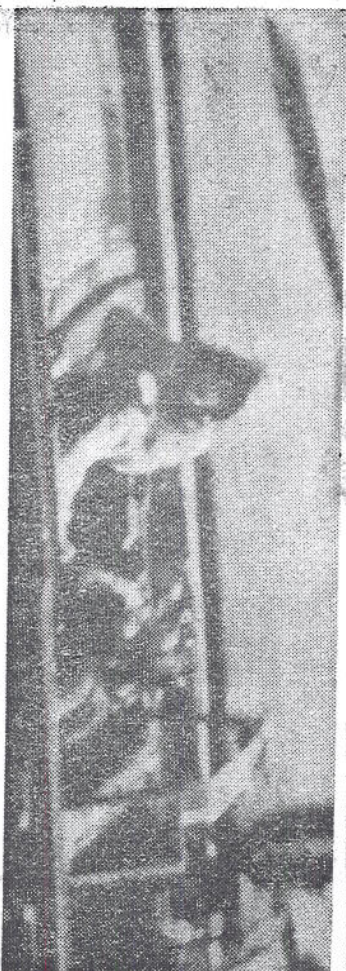


As the open limousine carrying President John F. Kennedy, Mrs. Kennedy and Gov. and Mrs. John Connally drives through

Dealey Plaza in Dallas at 12:30 p. m. on Nov. 22 the President, in the rear seat, is struck by the first of two bullets . . .



President falls toward Mrs. Kennedy's shoulder . . .



Then into her lap. First Lady's face registers her shock



Mrs. Kennedy stands, then climbs onto back of car to help Secret Service men into vehicle as it sped away toward the hospital, where President died.

Photos Courtesy Life Magazine. Copyright 1963, Time, Inc. All Rights Reserved. Via Associated Press