

Drama at Airport

KENNEDY

The Weather

Bay Area: Fair, slightly warmer. Highs, 60 to low 70s; lows, 45 to 55. West to northwest winds.

See Page 44

San Francisco

104th Year No. 151



FRIDAY, JUNE 7, 1968

FLIGHT HOME

Chronicle

★★★★
FINAL

10 CENTS  GARfield 1-1111



Senator Edward Kennedy put a consoling arm around Ethel Kennedy as they rode in the hearse carrying the body of Robert Kennedy

UPI Telephoto

Solemn L.A. Farewell

Kennedy's Body Flown To N. Y. for Services

him there, probably at 10 a.m. (EST) tomorrow.

The body will be taken by train to Washington tomorrow for burial at Arlington National Cemetery. The burial is expected to be at 5:50 p.m. (Saturday), but the hour remained tentative.

The funeral procession is expected to wind its way from the Union station past the Senate Office building and the Justice Department, both places where the Senator had passed his days in public service.

The silver and blue presidential jet loaned by the White House which carried the body and many members of the Kennedy family and aides, landed at LaGuardia field in the glare of television lights.

NIGHT

On a hot night more than 1000 persons, including Governor Nelson Rockefeller, Senator Jacob K. Javits (Rep-N.Y.) and Mayor John V. Lindsay stood in respectful silence on the runway.

Tens of thousands of New Yorkers lined the 13-mile route from the airport into the city.

The great plane glided to a stop in front of the dignitaries gathered around a grey Cadillac hearse.

A box-like open elevator, normally used to raise in-flight supplies to airliners, was wheeled to the front door of the plane.

ELEVATOR

Inside the elevator were members of the Kennedy family, including Mrs. Rose Kennedy, the Senator's mother, Sargent Shriver, American Ambassador in Paris and his wife, Eunice, the Senator's sister and several of the Kennedy children.

Mrs. Ethel Kennedy, the Senator's widow, emerged from the plane, and leaned against the corrugated wall of the elevator, staring down blankly at her feet.

She was joined a minute

See Back Page

The Family Gather For Funeral Tomorrow At St. Patrick's

Times-Post Service

New York

Senator Robert F. Kennedy went home to New York yesterday from his last campaign.

Los Angeles — scene of both his death and his greatest victory — said a poignant farewell to the assassinated Senator.

He returned to the city he adopted to receive the sorrow and affection due a native son.

Here today he will lie in state at St. Patrick's cathedral and a Roman Catholic funeral mass will be held for

From Page 1

later by Jacqueline Kennedy, who stood behind the Senator's widow and appeared to try to comfort her.

Also joining the cluster in the elevator were Senator Edward M. Kennedy of Massachusetts, the late Senator's younger brother and Joseph Kennedy 3rd, 15, the slain Senator's eldest son.

MEMBERS

Edward Kennedy and other members of the party lifted the mahogany coffin draped in a maroon velvet cloth to the elevator. The elevator was then lowered to the ground.

Seven thousand people stood outside St. Patrick's on Fifth Avenue as the coffin was borne inside. All during the night friends, relatives and associates of the Senator stood — six at a time — as an honor guard around

the coffin.

At the Kennedy family's request, the welcome home was kept low-keyed and simple, but there was little need to stress the special poignance of the return of the second Kennedy felled by an assassin's bullet in five years.

Hours earlier, at the other end of the continent in Los Angeles tears streamed down the faces of many thousand who pressed up against the chain link fence at International Airport to bid goodbye to the Senator and get a final glimpse of the silver, blue and white transport bearing him to his final resting place.

Only eight days earlier Senator Kennedy, anxious to make up for his defeat in the

TV Times For Funeral

Complete coverage of the funeral of Senator Robert F. Kennedy tomorrow is planned by network television and radio stations in the Bay Area.

The requiem mass at New York's St. Patrick's Cathedral begins at 7 a.m. San Francisco time.

The Senator's body will begin its train journey to Washington at 9:30 a.m., arriving at 1:40 p.m.

Following a funeral cortege past the Senate Office building and the Department of Justice, Kennedy will be buried in Arlington Cemetery at 2:30 p.m.

KRON-TV (Channel 4) plans coverage from 5 a.m. to 4:30 p.m.; KGO-TV (Channel 7) from 6 a.m. to 4 p.m.; KTVU (Channel 2) from 7 a.m. to 9 a.m.; KQED (Channel 9) from 1:30 p.m. to 4 p.m.; KPIX (Channel 5) was undecided late yesterday about its coverage.

Network radio stations, also plan day-long coverage.

Oregon primary, had arrived in Los Angeles to fight for the California victory he said he needed to stay in his drive for the Presidency.

What happened in the eight days is now a page in histo-

ry: His campaigning, his debate with Senator Eugene J. McCarthy, his smashing primary win, his last speech, to a victory rally, his detour through a hotel kitchen early Wednesday — and the blaze of gunfire which felled him there.

END

The end came 25½ hours later in the intensive care unit at Good Samaritan hospital.

In a partitioned-off cubicle in a three-bed ward, surrounded by his wife, three of his ten children, two sisters, friends and the widow of his assassinated brother, Kennedy died at 1:44 a.m. of a bullet wound in the brain.

Later in the morning a big crowd began gathering, waiting for the closest thing Los Angeles would have to a funeral procession: The departure of Kennedy's body for the airport.

It was delayed because an autopsy had to be performed here, as required by local law, to establish medical details of his death.

A crowd of 4500 had stood in silent homage as the hearse bearing the Senator's body and a cavalcade of cars left the hospital.

A few persons stepped across the police line and threw roses and carnations at the hearse. In the silence, a few cries were heard: "Good-by. Good-by."

Eight sedans followed the hearse out of the parking lot, past the crowd, and down Wilshire boulevard.

An officer watched the motorcade depart, out of sight down Wilshire, then blew his whistle and waved. Wilshire boulevard hummed with traffic again. The crowd began to dissolve.

At the airport thousands were gathered at the West Imperial terminal, watching the Presidential jet which would take the Senator home from Los Angeles.

West Imperial highway was jammed bumper-to-bumper with cars of those who couldn't find places to park.

The cortege pulled onto the field. The hearse backed up to a lift-platform truck. The maroon cloth covering the casket was removed and the pallbearers — Frank Maniewicz and other men of the Kennedy party — moved the

Kennedy party — moved the casket onto the platform.

DOOR

Then other members of the group gathered around the coffin on the lift, locked hands, and rode with it as it slowly rose to the gaping door in the side of the plane.

Senator Edward Kennedy paused, picked up a floral bouquet lying on the floor of the lift, and took it into the plane with him.

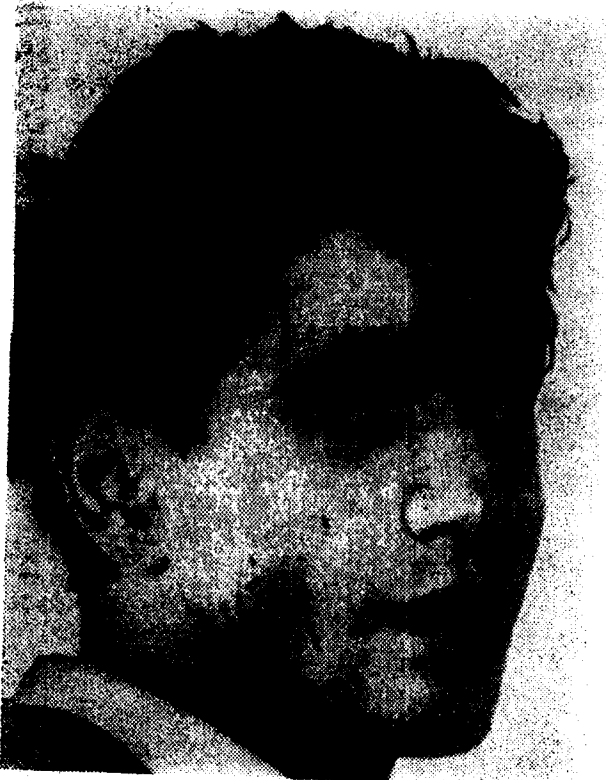
Then the doors closed — on Robert F. Kennedy's last campaign.

Aboard the plane were 70 persons — members of the immediate family and close friends. Many had known Robert Kennedy during his eight years of government service—and had aided him during the months when he fought for the presidency won and held a thousand days by his older brother, John.

The parallel with another occasion four and a half years ago was apparently too much for Jacqueline Kennedy, the President's widow.

She reportedly refused to board the plane until she was assured it was not the same plane that bore her husband's body to Washington from Dallas on November 22, 1963.

Aboard the plane were three of the Senator's children, Kathleen, 16, Joseph, 15, and Bobby 14. Stephen Smith, the Senator's campaign manager and his wife, a sister of Robert F. Kennedy, Jesse Unruh, California State Assembly speaker, Mrs. Martin Luther King and many other old friends of the family and participants in the Senator's campaign.



CPI Telephoto

SIRHAN SIRHAN, THE SUSPECT
The judge revoked the bail

The Campaign Ends



AP Wirephoto

Ethel Kennedy, daughter Kathleen (left) and Senator Edward Kennedy bowed their heads over the casket containing the body of Robert Kennedy as it was lifted onto the plane.