

Out of Seclusion

Ted Wears Neck Brace to Services

PLYMOUTH (Pa.) — (AP) — Sen. Edward Kennedy, wearing a neck brace and surrounded by family and close friends, emerged from seclusion today to attend the funeral of Mary Jo Kopechne, the secretary who died when a car driven by Kennedy plunged off a bridge.

The Kennedy party flew to Miss Kopechne's home town in a private plane from Hyannis, Mass., on Cape Cod, where Kennedy has been in seclusion since the accident in which the girl drowned.

Kennedy escaped injury when the car left a bridge and plunged into water on the island off Martha's Vineyard.

Haggard

The 37 year old Kennedy looked grim and haggard as he stepped from his auto to the private plane in Hyannis.

With him were his wife, Joan; Mrs. Robert F. Kennedy, and Kennedy's two closest friends, Reps. John Tunney of California and John Culver of Iowa.

Apart from the neck brace, there was no other evidence of physical difficulties stemming from the accident.

Below the neck brace, of course, Kennedy still wears a light back brace as the result of a near fatal plane crash in 1962.

Miss Kopechne once

worked as a secretary to Robert Kennedy.

Vase of Flowers

A simple vase of yellow flowers from the Kennedy family was placed near Miss Kopechne's coffin.

Joseph Kopechne, father of the young woman, talked with newsmen last night. He said he was "more than satisfied" with police reports that listed his pretty blonde daughter's death as accidental.

Kopechne said he had talked to Kennedy by telephone and said the senator told him he wished he, and not Miss Kopechne, had died in the accident.

Asked what else the senator had said, Kopechne replied: "He was so broken up I could hardly understand him."

Kopechne was dry-eyed, but his wife was sobbing as she left the funeral home.

Family Home

Although the Kopechnes live in Berkeley Heights, N.J., they brought the body of their only child to the family home here for burial.

"This is where she had her roots," her father explained.

Miss Kopechne was 8 when the family moved from Plymouth, but they returned often to visit relatives here and Miss Kopechne had worshipped in St. Vincent's Catholic Church, where the funeral services were held.



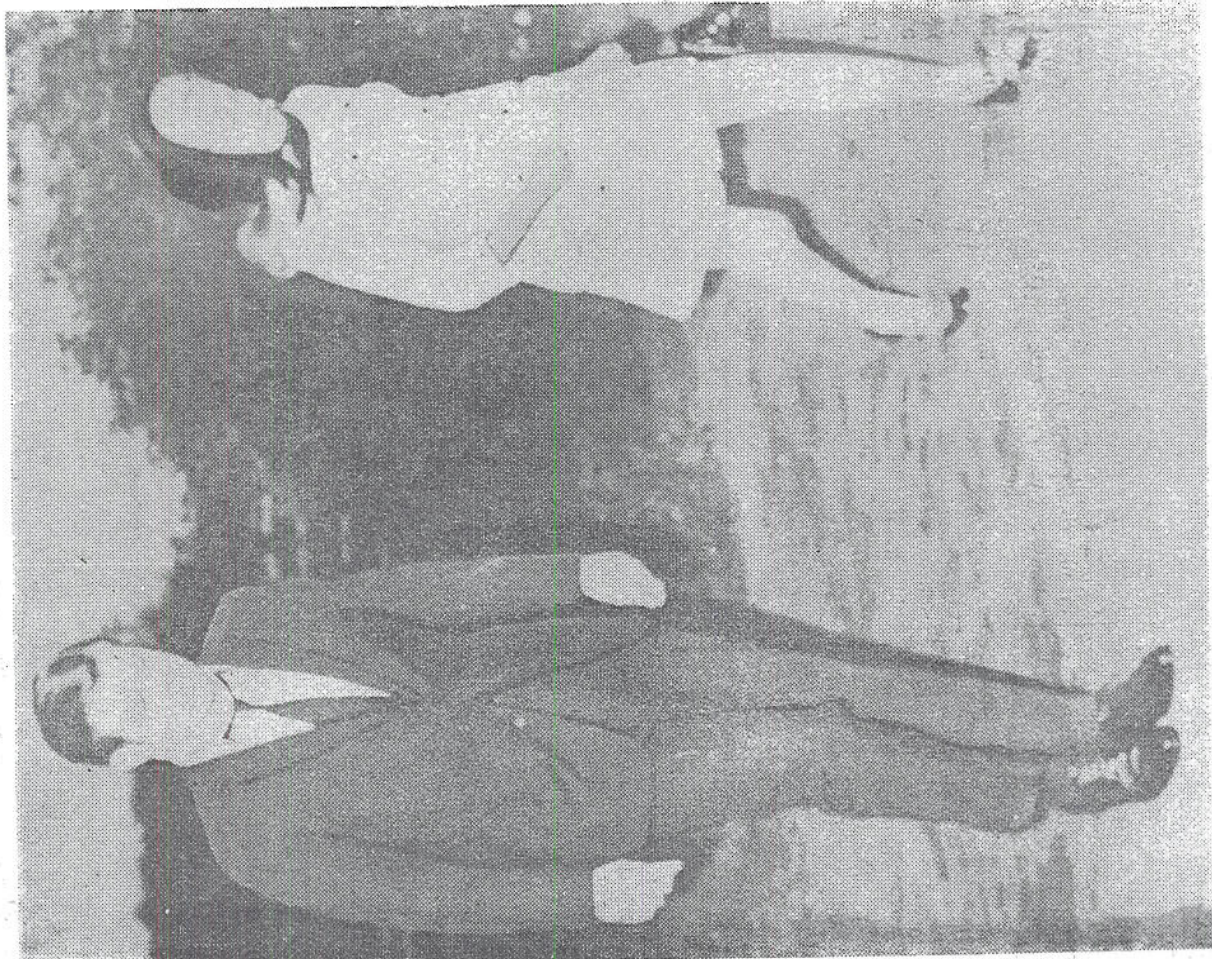
Senator Kennedy wore an orthopedic collar at Kopechne funeral.

At the time of her death, Miss Kopechne was working for Matt Leese Associates in Washington, D.C., an organization that sets up campaign headquarters for politicians. She had gone to New England last week with other former aides to Robert Kennedy for a regatta.

Sen. Kennedy to fight charge. See Page 2.



Joan Kennedy leads the way, Senator Ted escorts Ethel into church for rites



SENATOR AND WIFE LEAVE FOR KOPECHNE FUNERAL
Edward M. and Joan Kennedy walk to plane at Hyannis for flight to Larksville

—AP Photo