
**FROM THE
APPENDIX OF
WHITEWASH II**



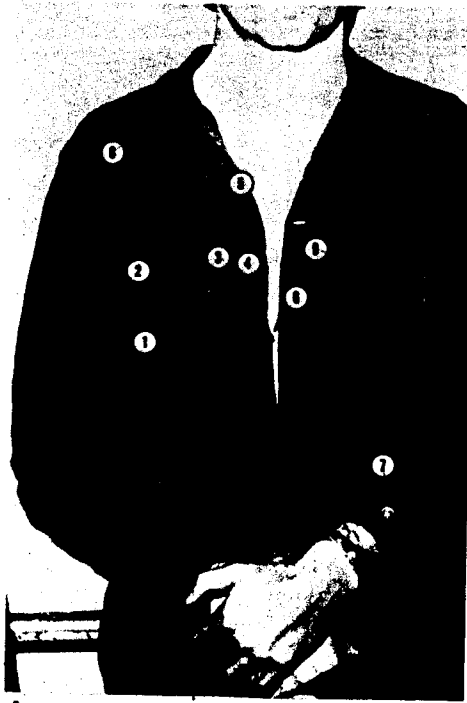
Oswald or Lovelady in doorway? Compare shirt in which Oswald was arrested (FBI version cuts off head, which shows hairline not Lovelady's but like Oswald's) with great enlargement from Altgens picture, then with official FBI pictures of Lovelady in shirt he told FBI he was then wearing. Note buttons missing on shirt in Oswald arrest photo and some buttons open on shirt in doorway, identical furls in right collars, similar patterns, cuffs (Lovelady's shirt short-sleeved). J. Edgar Hoover stated: "On February 29, 1964, Billy Nolan Lovelady was photographed by Special Agents of the FBI at Dallas, Texas. On this occasion, Lovelady advised that on the day of the assassination of President John F. Kennedy, November 22, 1963, at the time of the assassination and shortly before, he was standing in the doorway of the front entrance to the TSEB where he is employed. He stated he was wearing a red and white vertical striped shirt and blue-jeans." The Commission, from whose files I obtained this document and related photo, suppressed them from its Report.

Oswald could not have been simultaneously a sixth-floor assassin and a first-floor observer.

Lovelady



Oswald



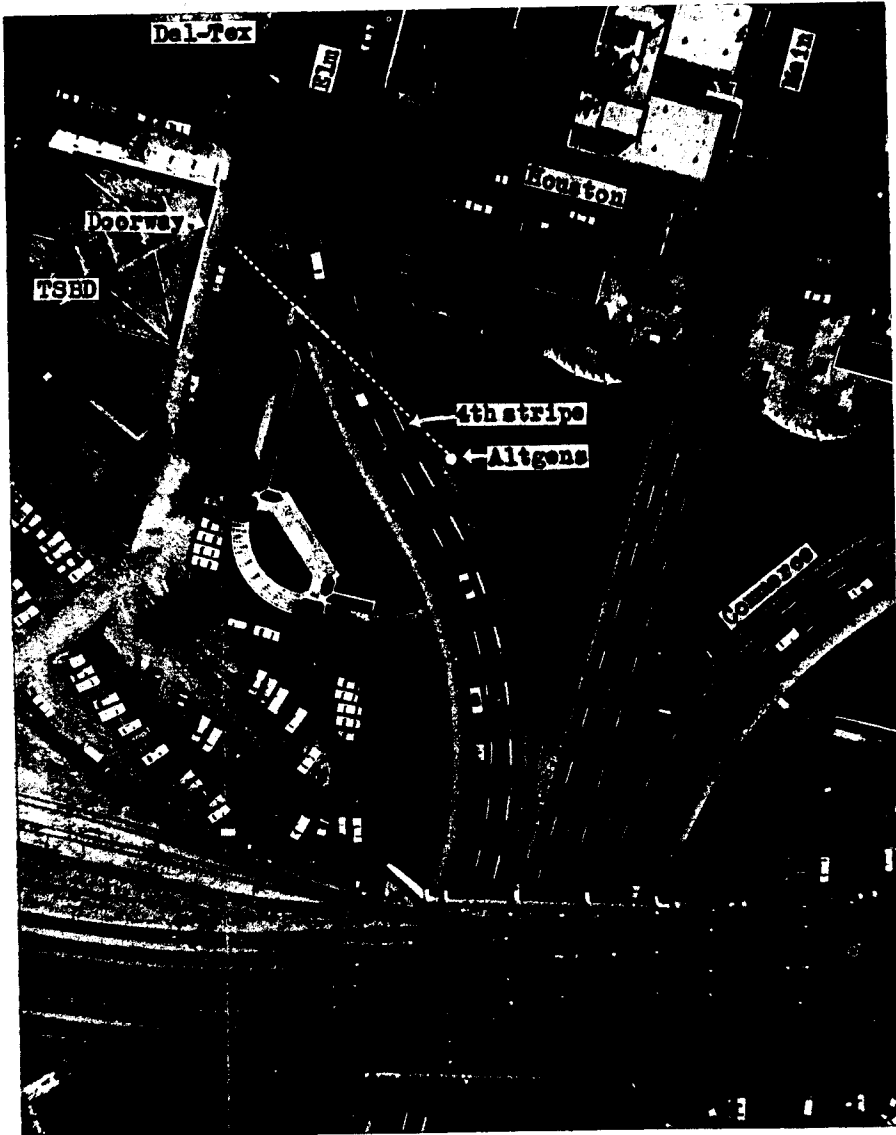
A

Shanefelt Exhibit No. 24

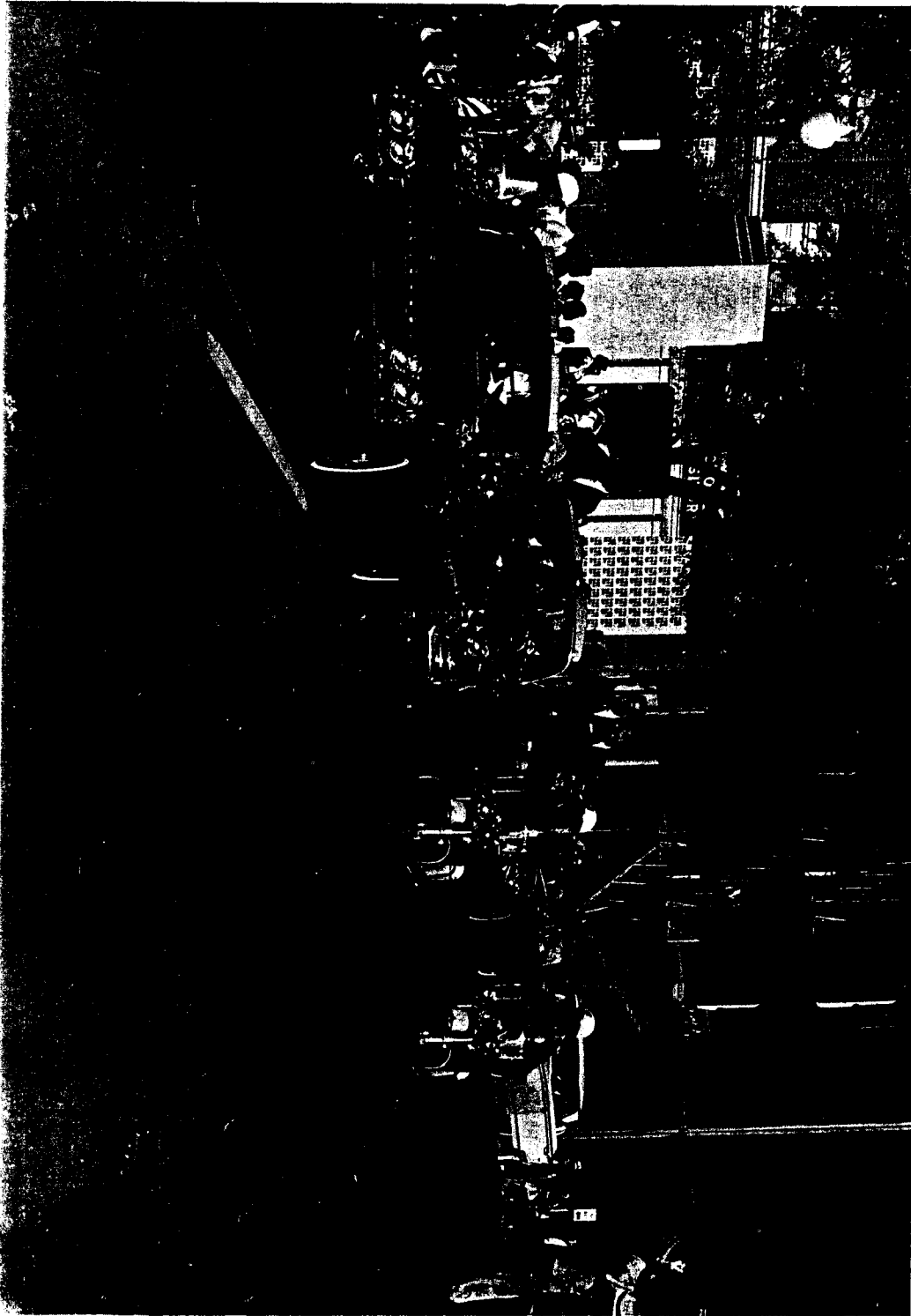




Cropped from all versions of the Altgens picture is this scene on the west wall of the Dal-Tex Bldg: a man in seeming distress and below him an arm-like object projecting from the open second-floor window (p.216). This is greatly enlarged from pinhead size on a 35mm negative. Professional Photographer Altgens belatedly was heard for but 15 minutes, although his is the most important single picture. A man was arrested in this building. The Report ignored that also.



Aerial photo proves that from Altgens's position (as marked by Liebeler) to the TSBD doorway, the line of sight in relation to the fourth road stripe coincides with Frame 255, not 210 as the FBI said. This disproves the Report. (Notations added by author.)



Here, for the first time, is the full, unretouched Altgens picture. After first saying they had supplied it and then insisting it was not available, AP provided it, complete with the black edging of the original 35mm negative. If for no other reason this picture was cropped in each of the incomplete and inconsistent forms the Commission used because it destroys the entire Report and proves Oswald's innocence. Cropping always eliminated the road stripes by the fourth of

which the car can be placed at the time of Frame 255 of the Zapruder film, with which this coincides. But the FBI placed the President at this stripe at Frame 210, the time it says the first shot could have been fired by Oswald. This proves the President was not where the FBI placed him during the assassination and was first shot when the tree blocked him from that sixth-floor window. See also inside covers, Sheneyfelt Exhibit 25, aerial photograph.