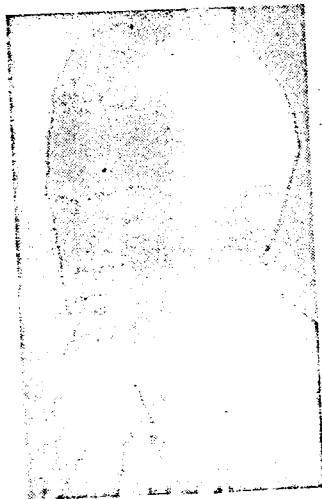


Make File -
I.D.

MONDAY, MAY 6, 1968

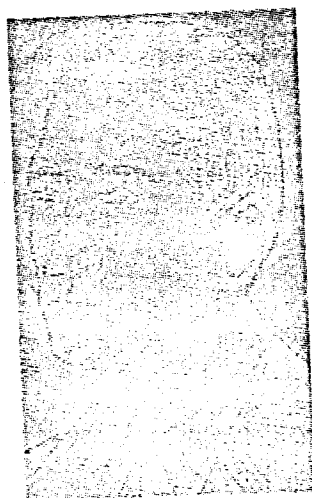
94941

Picture Parallel



THE DALLAS SUSPECT

Ex FBI agent found the similarities striking



THE MEXICAN SKETCH

Theory of a 'Double' In Assassinations

A former FBI agent yesterday raised the spectre of a link between the assassinations of President Kennedy and Dr. Martin Luther King.

William Turner, 41, said he thinks the possibility of a relationship between the two slayings is strong enough to warrant a Congressional investigation.

"I'm not drawing any conclusions," he said, "I'm just saying the similarities are striking enough that they should be investigated."

Here is the case Turner makes for a full-scale probe by a joint Senate-House investigating committee:

- A sketch prepared in Mexico under FBI direction when the assassin was believed hiding there bears a striking resemblance to a man arrested in Dealey Plaza on Nov. 22, 1963, after the President was shot.

- The photograph subsequently released by the FBI of Eric Starvo Galt—the prime suspect in the King murder who was later identified as James Earl Ray—looks strikingly as if it was taken of a dead man.

- In both assassinations, a file with a telescopic sight "was conveniently left at the crime scene."

- Investigators in both killings turned up an "abundance of physical evidence," including city maps with significant points circled.

Turner, now a free-lance writer living in Mill Valley—has announced his candidacy for the Democratic nomination for the Sixth Congressional District seat of Representative William Mailliard.

One of the major planks in his

See Back Page

Airp

St which will well as initial data:

S York

2nd

Nat to the office:

Off

Andy interesting Saigon a tape cassettes. Fierce If she doesn't

raged ar day in tl what tl claimed wide offe

Enemy Son Nhu daybreak sealed of busy air Cong had than 120 out the ce

Military 160 Viet C the fightin tal today. developed military e edge of th

Viet Co rockets f namee through cemet white cr diers kil china wa came fro of tin houses.

The c Son Nt Cuong. my ro tery. t

N