

Sketches of the Nine Judges Who Are Hearing Appeals on the Watergate Tapes

David Lionel Bazelon
Appointed to court by President Truman in 1949 and has served as chief judge since 1962. . . . Born in Superior, Wis., on Sept. 3, 1909



... graduate National Committee... regarded, with Judge McGowan, as court swing man.

George Edward Mackinnon
Only former politician on court, he was appointed by President Nixon in 1969. . . . born in St. Paul on April 22, 1906. . . . graduated from University of Minnesota, where he was center on the football team. . . . after law school there entered private practice and served in the State Legislature. . . . served one term in Congress and in 1958 was unsuccessful Republican candidate for Governor of Minnesota. . . . served as research director for Nixon Vice-Presidential campaign in 1952. . . . counsel for Investors Diversified Services Inc. when named to court. . . . conservative.

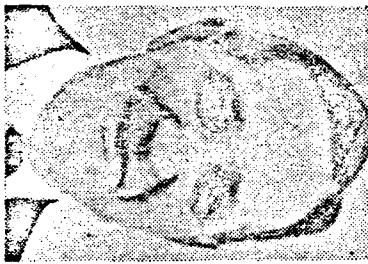
... grew up in Chicago and earned law degree at Northwestern University. . . . practiced law in Chicago before appointment as Assistant Attorney General in 1947. . . . 1964 ruling on Monte Wayne Durham became standard on judging criminal insanity. . . . close friend of liberals on Supreme Court and a bitter antagonist of Chief Justice Warren E. Burger from his days on the Appeals court. . . . highly regarded by liberal activists.

Harold Leventhal
Nominated to court by President Johnson in 1965. . . . born in New York on Jan. 5, 1915. . . . graduated from Columbia College and Columbia Law School. . . . was clerk for Supreme Court Justices Stanley F. Reed and Harlan F. Stone. . . . worked as lawyer for Interior Department, Office of Price Administration and Coast Guard before entering private practice in Washington. . . . former general counsel to Demo-

Athal Stevenson in Navy Department during World War I and when he was Governor of Illinois. . . . at Stevenson's funeral in 1965 he eulogized "this completely civilized man doing battle for the very idea of civilization". . . . one of the "swing men" on the court who is not a member of the liberal or conservative blocs.

Spottswood William Robinson 3d

Court's only black member, appointed by President Johnson in 1966 after three years as District Court judge born in Richmond on July 26, 1916. . . . attended Virginia Union University



and received law degree from Howard University, with the highest scholastic record in school's history. . . . practiced law in Richmond and was southeast regional counselor for the National Association for the Advancement of Colored People. . . . taught at Howard law school and served as dean for three years. . . . known as mild-mannered and intellectual member, with judges

Bazelon and Wright, of court's liberal bloc.

Roger Robb

Appointed by President Nixon in 1969. . . . born in Bellows Falls, Vt., on July 7,



1907. . . . graduate of Yale College and law school. . . . father served on court from 1906 to 1939. . . . spent eight years as Assistant United States Attorney in Washington before entering private practice. . . . served as special counsel to Atomic Energy Commission during investigation of J. Robert Oppenheimer. . . . handled numerous controversial cases for such clients as Bernard Goldfine, Earl Browder and Otto Olepka. . . . one of court conservatives.

Edward Allen Tamm

Served 17 years as district judge before President Johnson appointed him to Court of Appeals in 1965. . . . native of St. Paul, where he was born on April 21, 1906. . . . attended Mount St. Charles college in Helena, Mont., and graduated from University of Montana law school. . . .

spent 18 years in the Federal Bureau of Investigation and



was a close aide of J. Edgar Hoover. . . . caused controversy several years ago when his memorandum criticizing dress and behavior of law clerks was leaked to press. . . . member of conservative bloc.

Malcolm Richard Wilkey

Newest member of court, named by President Nixon in



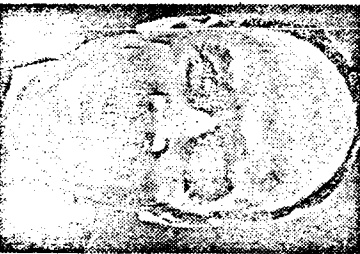
1970. . . . born in Murfreesboro, Tenn., on Dec. 6, 1918

... a graduate of Harvard and Harvard law school. . . . served as Lieutenant Colonel in Army field artillery during World War II. . . . practiced law in Houston and was United States Attorney there

... spent two years in Washington as Assistant Attorney General at end of Eisenhower Administration. . . . delegate to 1960 Republican convention. . . . known as most liberal of Nixon appointees.

James Skelly Wright

Born in New Orleans on Jan. 14, 1911. . . . a graduate of Loyola University and its law school. . . . served in Coast Guard during World War II. . . . named United



States Attorney in New Orleans in 1948 and United States District Judge for New Orleans the following year. . . . handed down a series of landmark school integration decisions and was accused of being "traitor to his class" by former friends. . . . President Kennedy appointed him to Court of Appeals in 1961. . . . known as a liberal and friend of Chief Justice Bazelon.

