

copy to: HAWVERAC

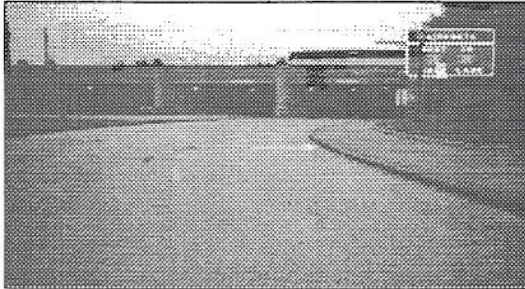
Photographic Evidence From Dealey Plaza

❖ By Michael Parks ❖

November 1999

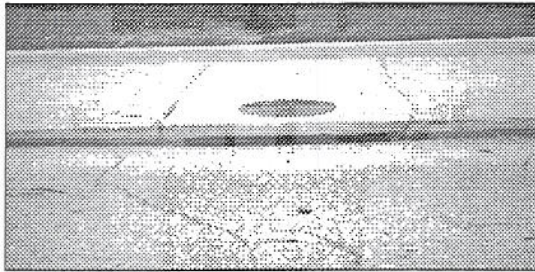
Part One, The Drain Shooter

In order to prove or disprove the possibility of a drain shooter, the following photographs were taken. Picture 1 was shot from the X painted on Elm Street that has been used for years as the location of the head shot or Z313. The drain is seen along the right or north curb.

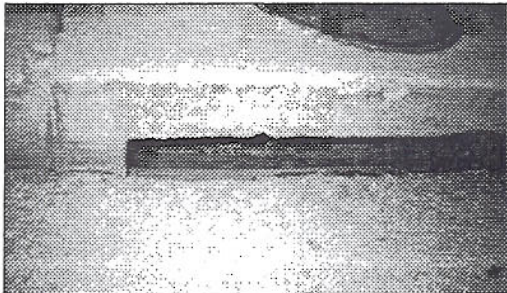


Picture 1

Picture 2, taken of the same drain, was shot from the northern part of the center lane. Picture 3 is a close up of the drain opening.

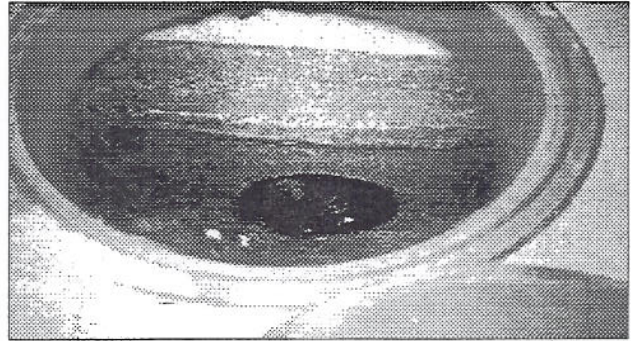


Picture 2



Picture 3

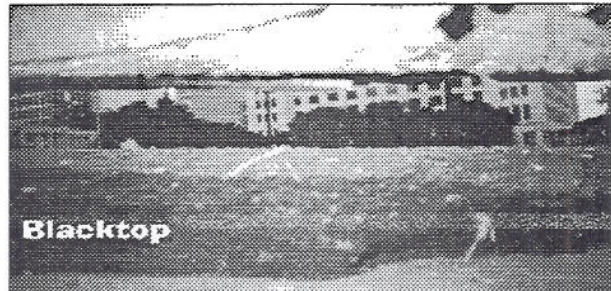
With the manhole cover removed, looking down into the drain box, a 16-inch exit pipe can be seen. It is the largest of three pipes in the box. It was through this pipe, as the theory goes, our shooter made his escape. The pipe crosses under the street to a drain on the other side. From there, it heads towards the river. Picture 4 shows the 16-inch pipe from above.



Picture 4

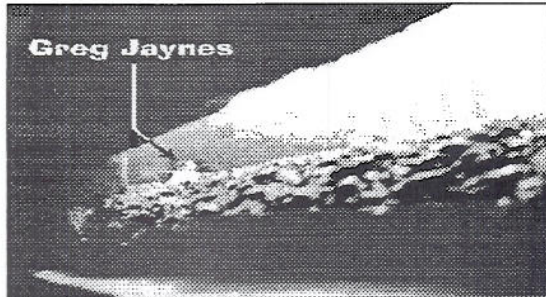
Besides the above-mentioned pipe, the drain box has a 10-inch and a 13-inch feeder. The smaller pipe comes from the Knoll while the larger comes from up Elm towards Houston.

Picture 5 is from within the drain box, looking out the opening slit. Please note the blacktop added to the street since 1963. This can reduce the opening to 4 1/2 inches in places. As we shall see, this added blacktop had no effect on a shot at Z313. The ceiling of the drain box is the underside of the sidewalk. In order to see out, one must place their head against the ceiling. The lip over the opening is the width of the street curb.



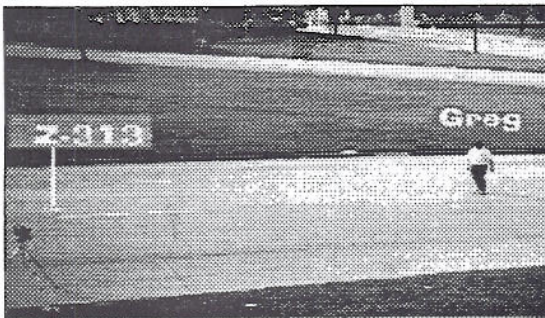
Picture 5

Picture 6 is of researcher Greg Jaynes as he stood in the northern side of Elm's center lane. This picture was taken from the street side of the drain box, camera-to-eye, allowing the best view out. No room was allowed to aim a weapon.



Picture 6

In picture 7, taken from Zapruder's perch, Greg is seen standing in the same location as before. In the far left side of this picture is the white X painted on Elm. A person in the drain would never have seen the limousine during or before the shooting.



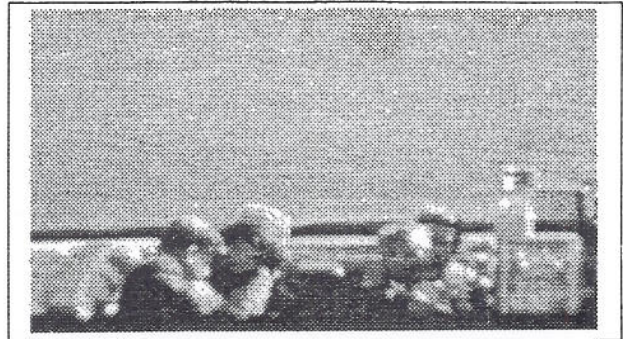
Picture 7

Part Two, The Location of the Head Shot

The above test shows the importance of knowing the exact location of the head shot. This location can be easily calculated through an analysis of the Zapruder film, the size of the limousine and a few measurements.

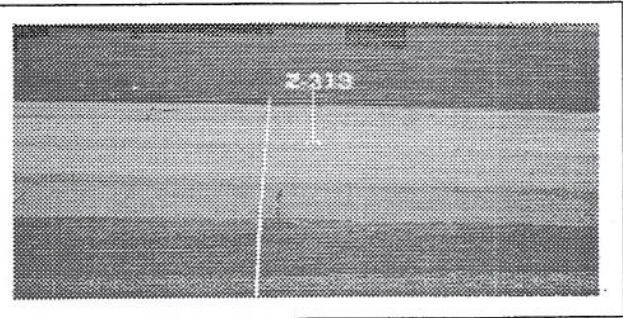
Picture 8 is from Zapruder frame 312. Note the small window in front of the hand hold/light bar behind the Secret Service agents and before the Connallys. The leading edges of the windows are not quite in line with each other. It was not until Z314 that these windows align, making this point

perpendicular to Zapruder.



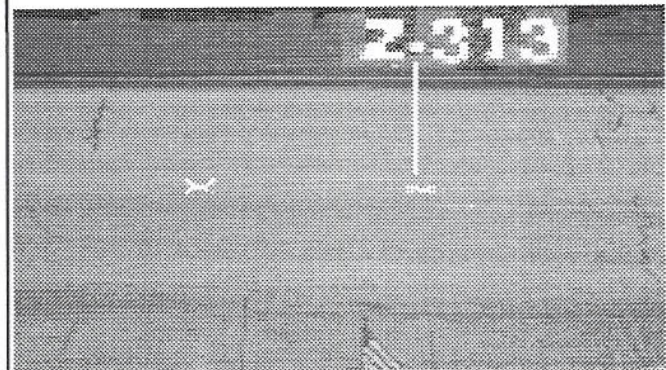
Picture 8

From where Zapruder stood, a perpendicular was measured and a nylon cord run along this line. Picture 9 shows the cord passing to the left of the white X painted on Elm. It becomes clear that with Z314 being along this line that the X is off.



Picture 9

Measuring the distance from the window frames to Kennedy will mark his location on Elm at Z314. Picture 10 has the correct location of the head shot. This point is eight feet east of the white X.



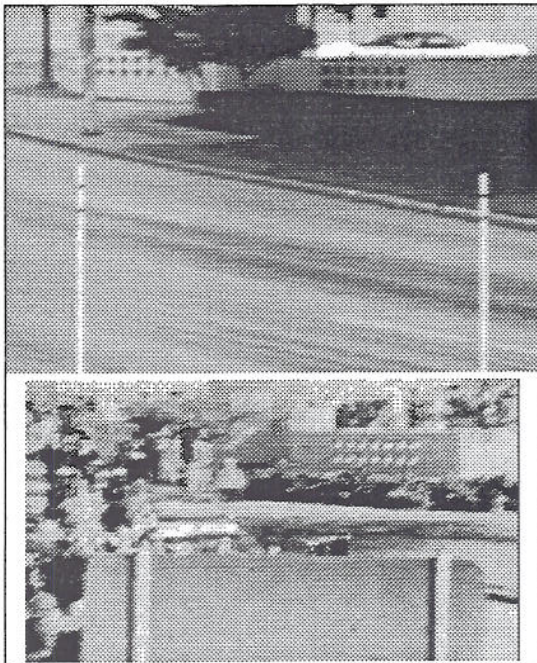
Picture 10

Returning for a moment to the possibility of a drain shooter, we can now see that once the exact location of the head shot was determined, it makes this drain shot even more improbable.

Part Three, The Stemmons Sign

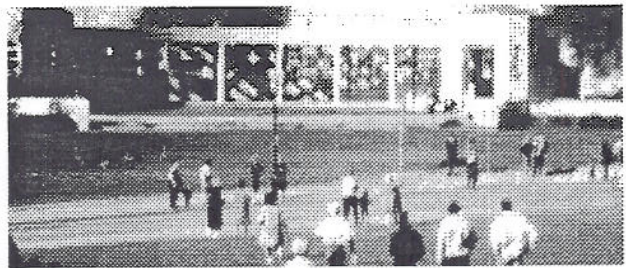
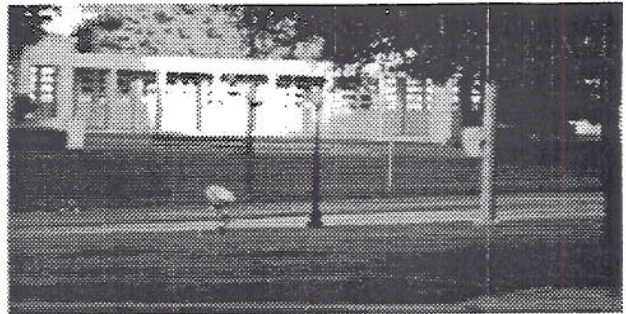
In the Zapruder film, a Stemmons road sign blocks the limousine from view during the first shooting sequence. During this blocked time frame, the magic bullet supposedly performed its miraculous feats. It is therefore felt that the sign was enlarged or moved to cover any evidence of a conspiracy.

Picture 11 was taken from where Zapruder stood. The top shows two white posts erected to represent the outer edges of this sign. A comparison to the lower half of this picture, a Zapruder frame, shows the post were placed correctly from this angle.



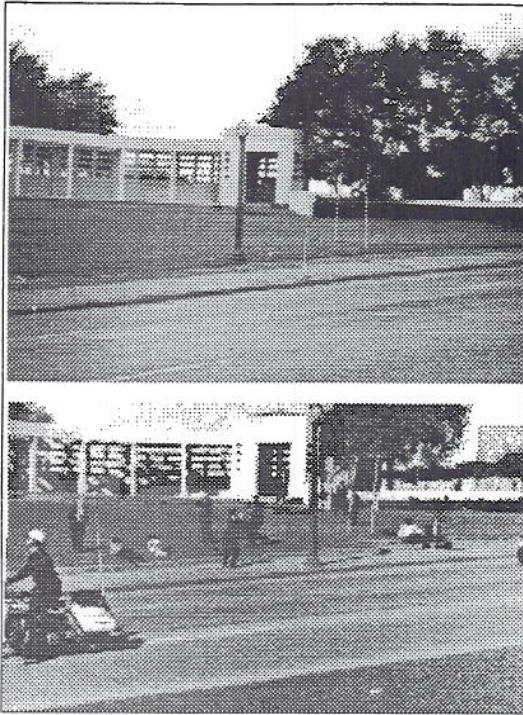
Picture 11

Picture 12 is of the same posts as seen from where Charles Bronson stood. The upper half is the re-enactment while the lower is the assassination day picture. Bronson was only able to see the leading edge of the sign. Utilizing this picture, the Zapruder frame and a survey transit, the posts were placed in Dealey Plaza.

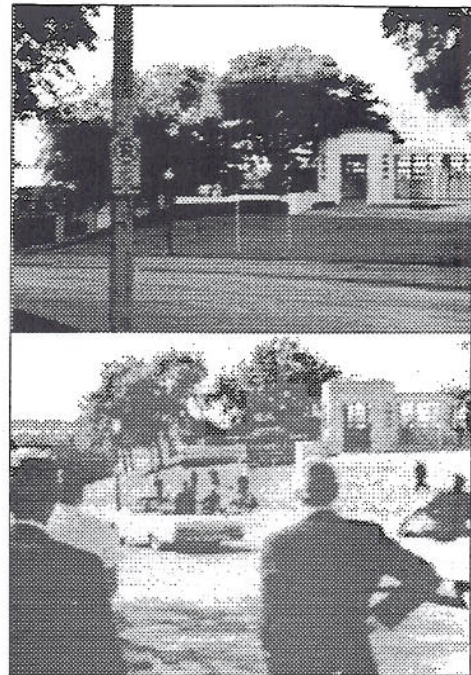


Picture 12

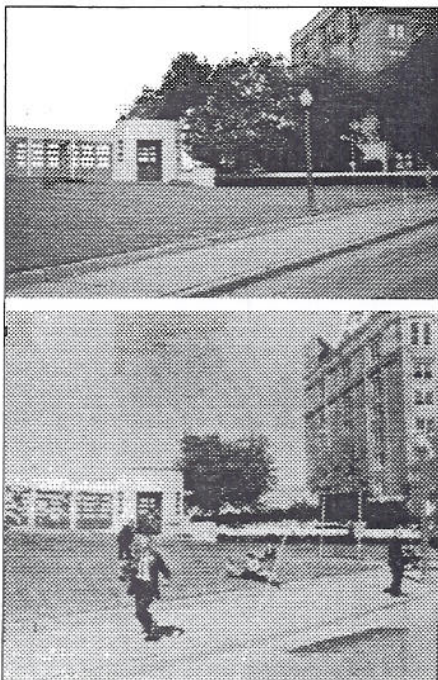
Pictures 13-16 are witness pictures along with the re-enactments. Measurement made of the white post and the actual assassination day sign prove that the sign, as seen in the Zapruder film, was enlarged. This is an on-going project and all the data is not in yet. But, from the initial calculations, the Zapruder sign was enlarged seven percent. When this work is completed, it will be published in JFK Lancer's Kennedy Assassination Chronicles.



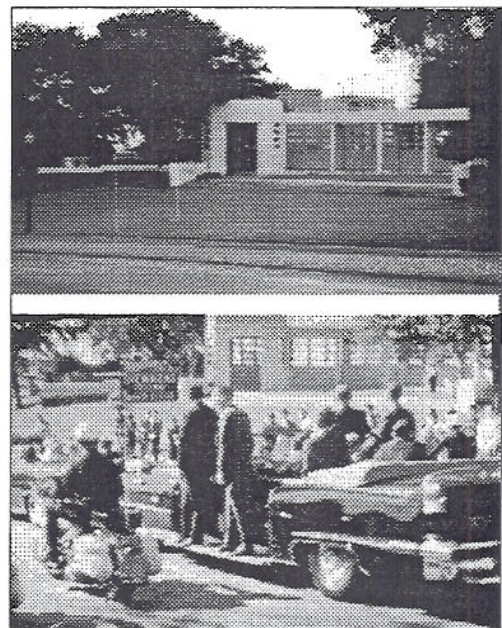
Picture 13 - Bothun



Picture 15- Towner



Picture 14 - Rickerby



Picture 16 - Willis