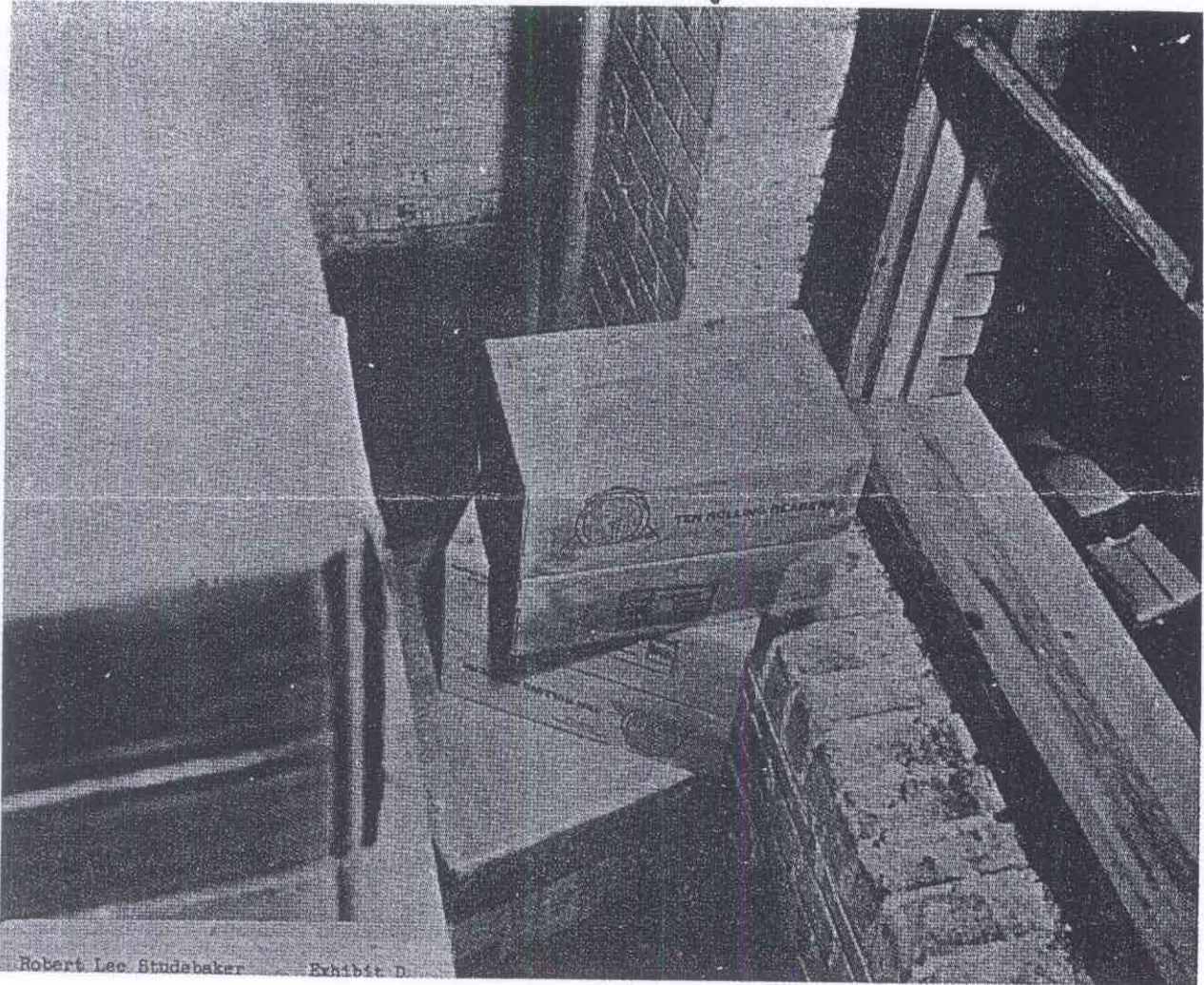


no pipe
↓

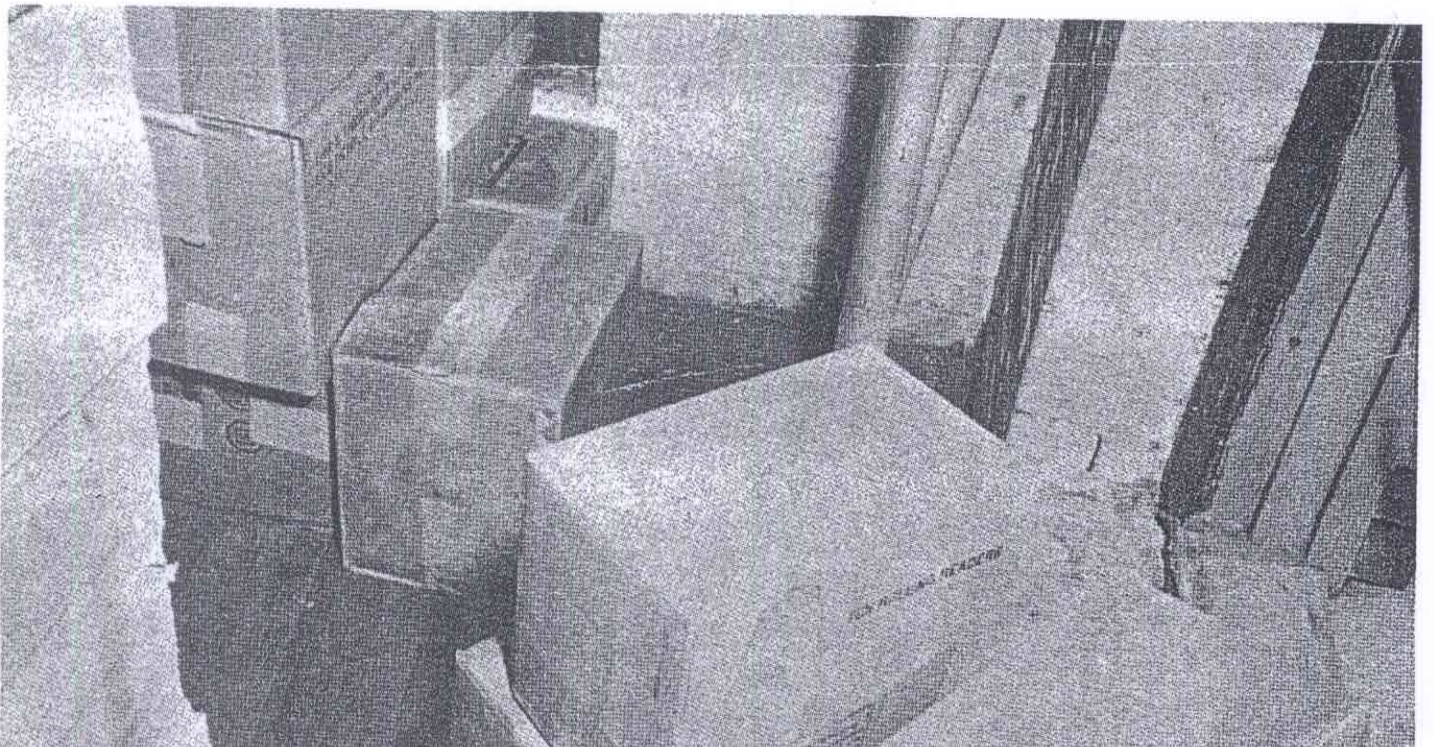


Robert Lee Studebaker Exhibit D

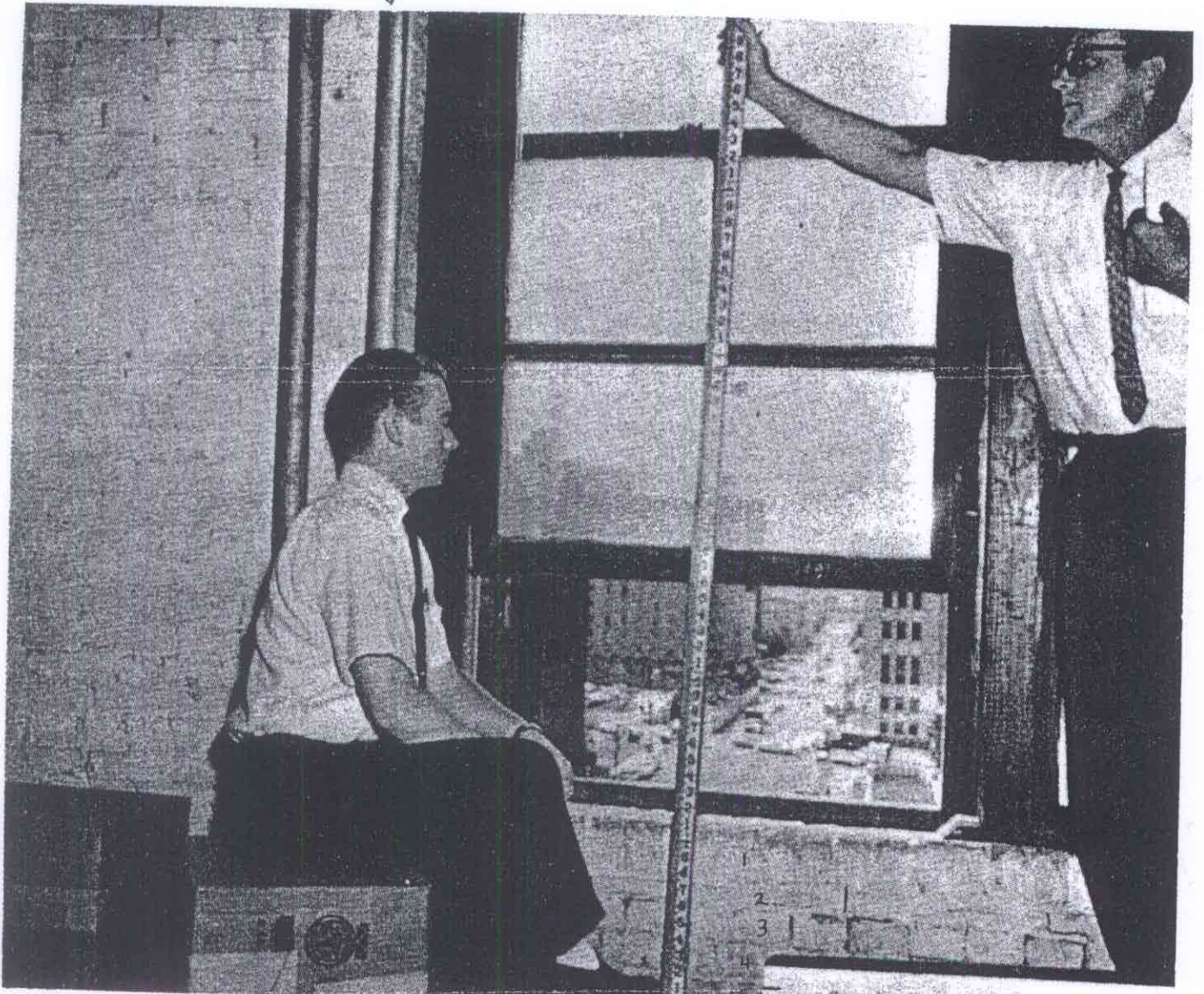
↑

"White wash" page 204

more than 5 bricks from window sill to floor?



pipe at corner of bricks



Commission Exhibit No. 1312



5 bricks from window sill to floor

Page 19 of Volume 18, showing the omission of Frames 208-211 and the mutilation of Frame 212.
See discussion on page 45.

"White wash" page 207