

Q2

30-06 Rifle

Rem. "Savage master" # 461476 with scope

4760

o Linters 4/5/68

A 17350 (with clip)

(NR-NCIC or NSPI)

Gun for case New cond. except for few scars on stock & barrel forearm

Scope " " (SN bottom of window, obj. plate.)

" Redfield " stickers present on window, obj. cap

" " missing from Elev. " "

Redfield Gunsight Co

1315 South Clarkson

(Not listed as policy in 1979)

Denver, Colo 80210

- Standard Weaver 4x-7x mount - No 11x scope from any previous listing, INR mount AS2415x

Scope set on 6 3/4 X, has medium (prob.) crosshair

Q2

Gun in Box Q1, for 2030 in Browning "Savage" gun (with 22" barrel)

SN 4744Z5 (not 444715 or 444725.7)

(NR-NCIC or NSPI)

4744Z5 (later cond.)

(Letter (Bureau 2/10) advised 50222 is yr of mfg. Z in rifling 2:11)

No alumin. or various scratches or markings of gun

No print, wood or other foreign material on gun.

Mf. ballistic data for 3006 SpR 150 gr PSP CL R-P

(~~not~~ listed in 1965 Peters Cat. - Listed in 1963 Cat. Peters
~~not~~ " " 1948 Peters Cat. " " 1965 Rem Cat
 Initial → 1955

R-P headstamp origin

Pointed SPCL	Muzzle Vel					Muzzle Energy					Weight in 200 yds					
	100	200	300	400	500	100	200	300	400	500	100	200	300	400	500	
150 Hi-Speed	2970	2670	2400	2170	1870	2970	2370	1920	1510	1190	970	1.9	0	-7.5	-2.6	-45.7

Bussellor 7x35

D.P. Bussell Bldg. Inc. 639

Bussell Bldg.
Pasadena, Calif. 91107

NR-NCIC 4/5

(Not listed as policy in NSP)

Q67 MC - e bullet

- MC - Q2 rifle - mostly white of lead

Blood and body tissue

blue tinted

Wt 70.38

(orig. 150gr R-P

Ferric on base portion

L46-6

Dir Right

Lead width .040 ± .012

Grain width .115

Dia .308 - .3087 - .30 cal.

Length - untid

Refly W

Savage ^{300f}, Model ²¹⁹ ₁₁₀ ^{110c}, Rem ³⁰⁻³⁰ M 725, 725A, 725B, 725C; Saw. 725 in 99, 110, 110c

Remington, Models 721, 725, 740, 760

Saw. 300 Rem Mag. M110

Saw. 300 Saw - PP

Rem. .308 M 722, 760, 600; 300 Rem Mag.

Q64 like bullets in Q4-Q8 + ed by ptg Q7 + etg Q11-13

Q64 diff from bullets in Q9-12 (military ball)

1st same bullet looked into ^{30 06} ^{300 Rem} ³⁰⁸

" " sold for reloading - .30 cal

Bullets

Powders

Q4

$$wt = 150.75 \text{ g}$$

$$wt = 50.50 \text{ g}$$

Q5

$$wt = 148.95 \text{ g}$$

$$wt = 50.85 \text{ g}$$

Q6

$$wt = 149.45 \text{ g}$$

$$wt = 50.90 \text{ g}$$

Q7

$$wt = 150.25 \text{ g}$$

$$wt = 50.70 \text{ g}$$

Q8

$$wt = 149.70 \text{ g}$$

$$wt = 50.82 \text{ g}$$

Var 1.80g

4.1g Var.

Q9

$$wt = 151.44 \text{ g}$$

$$wt = 49.10 \text{ g}$$

Q10

$$wt = 151.10 \text{ g}$$

$$wt = 49.50 \text{ g}$$

Q11

$$wt = 151.50 \text{ g}$$

$$wt = 49.48 \text{ g}$$

Q12

$$wt = 150.31 \text{ g}$$

$$wt = 49.44 \text{ g}$$

(Var 1.13g) ↑

.6g Var

Q3 30-06 Spfx R-P cartridge case

HT side Q3 R

Silent Q2 gun

No marks other than cut mark from Q2 and B7C-Fl marks
darker - Some marks under rim apparently by ruff loading
tools since ^{upward} marks on Q4-Q8 and Q9-Q12 and
on clips in 3 boxes; this type seen in test supply in lab.

Q3 like clip case portions of Q4-Q8

Q3 and Q3a cut from same clip - marks for diff. case.

Q3 has 1 cut mark - R 5 -

Q3 has ruff start - bottom - markings under - loading up.

Q3 has chamber marks - set Q2

Q3 has no other marks visible

Hyman 1000 700 1000

Transmission Supply Co

set changed here Q2

HT find; identified; ...

HT side

Q₃ Cont. case.

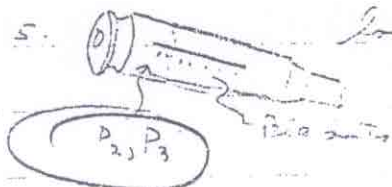
1 - Wheel Q₃ R

2 - Black marks show areas ident. w/ Q₂ except BF.

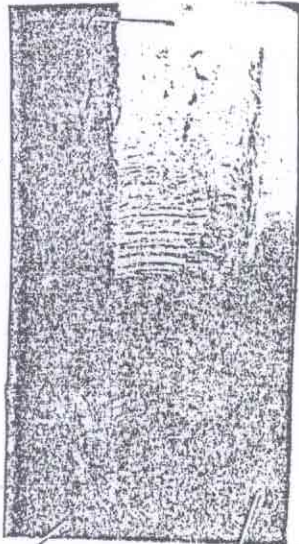
3 - Areas under rim - 100% for ext. - / Q₂ extractor is "Kane, Lee - type"

4 - Rim shows only 1 extractor mark. See photo P₁

5 - Long scratch ident w/ Q₂ no photo.

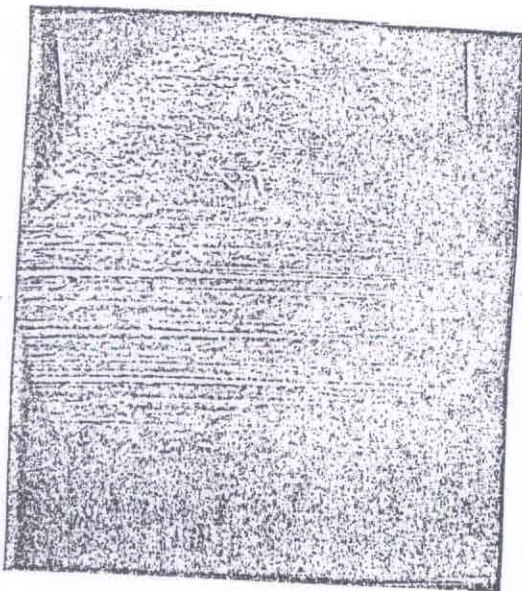


See photo



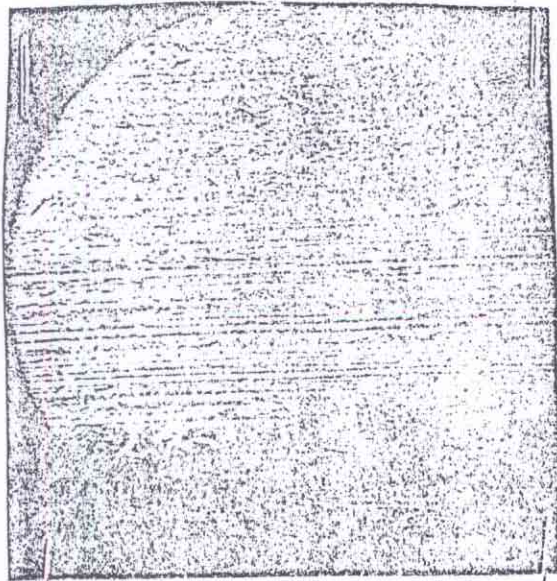
P₁
48 mm

Q₃ Q₂



Q₃ Q₂

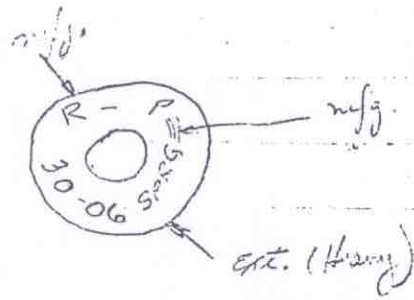
P₂
48 mm



Q₃ Q₂

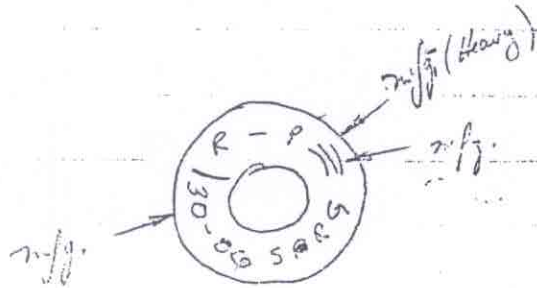
P₃
48 mm

Q4

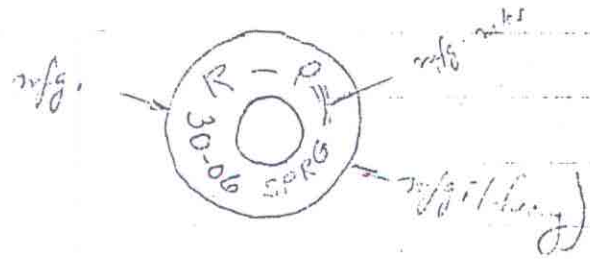


place into shell holder in lab.

Q5

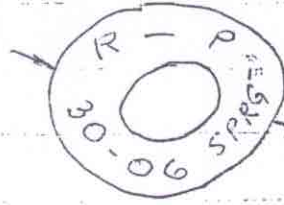


Q6



Q7

from light



heavy mfg.

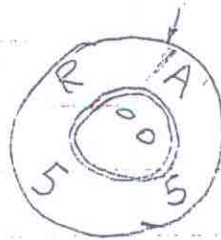
Q8



heavy mfg.

Q9

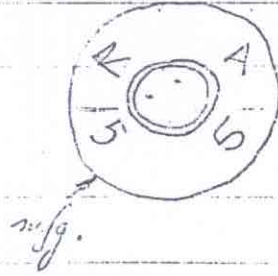
purple ink analysis



heavy mfg.
machine gun belt

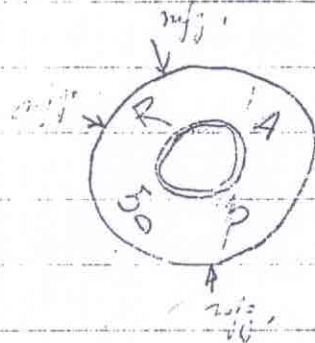
Q10

people H₂O proofing
similar like notes in Q9



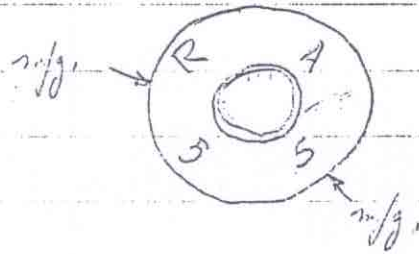
Q11

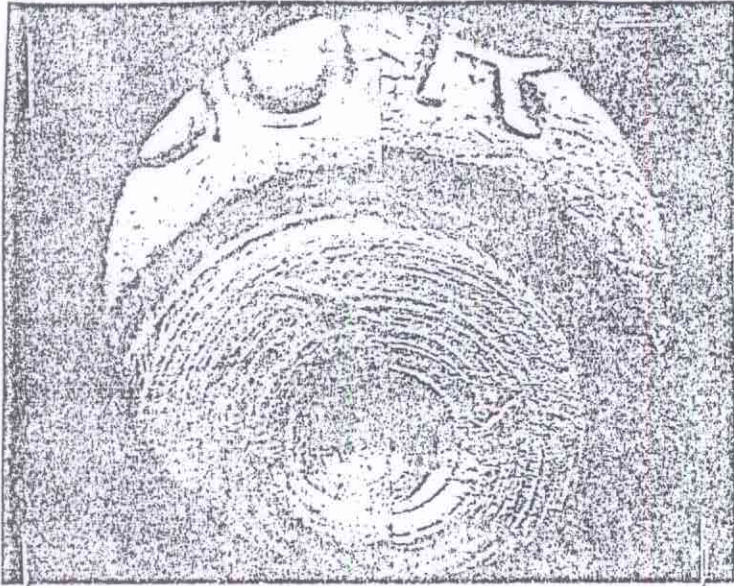
people H₂O proofing
similar like notes in Q9



Q12

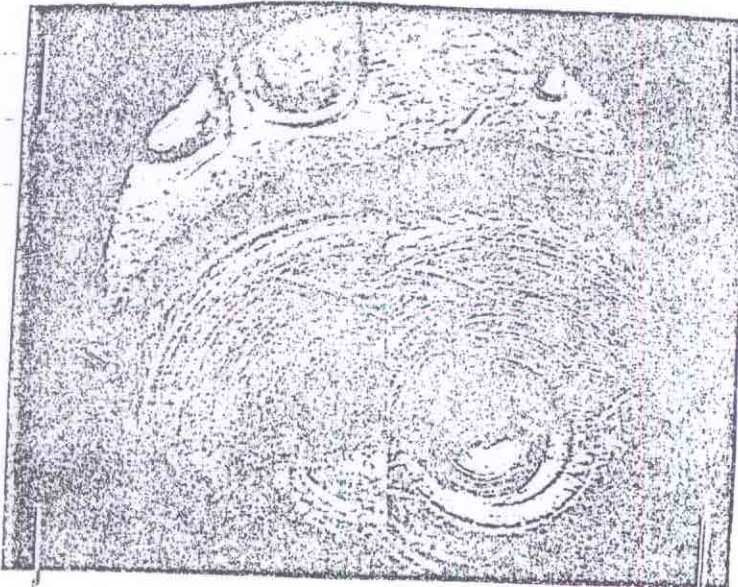
people H₂O proofing
similar like notes in Q9



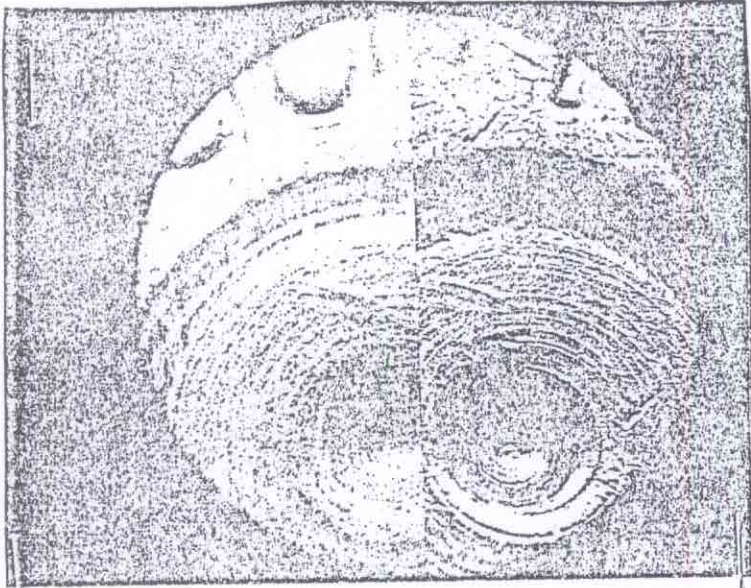


Fingerprint - NG
for comp. purposes

Q3 48mm Q2

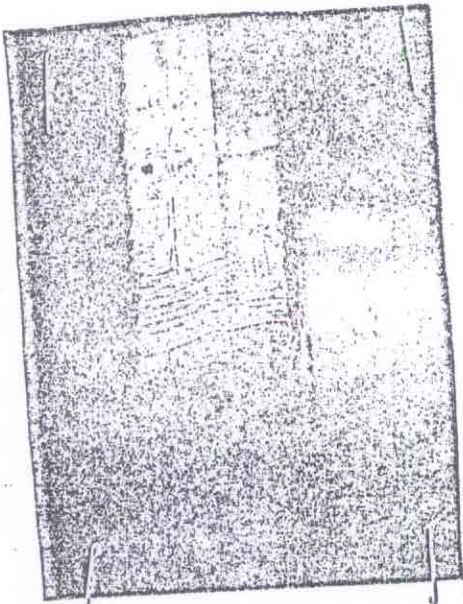


Q3 48mm Q2



Q3

44mm Q2



Q3 32m Q2

Gen. Notes: Q1. Hand by as from Ceromarine supply
Q4-Q8 44 ml clyts Q9-12 in Peters cly box for
150 gr P.S.P. pellets (like 064)