

FROM THE APPENDIX OF WHITEWASH II

Altegens
and then
complete with
for no
the incomm-
because it
occence.
fourth of

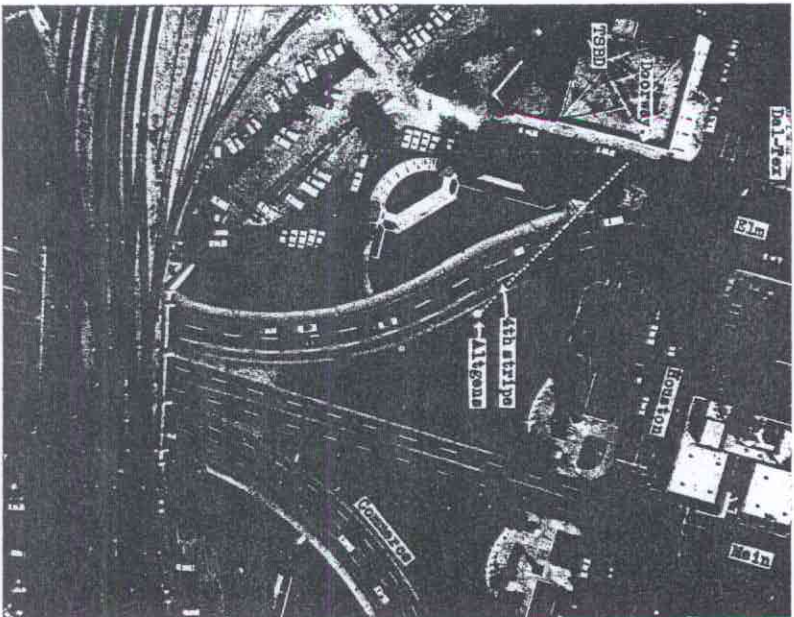
which the car can be placed at the time of Frame 255 of the Zapruder film, with which this coincides. But the FBI placed the President at this stripe at Frame 210, the time it says the first shot could have been fired by Oswald. This proves the President was not where the FBI placed him during the assassination and was first shot when the tree blocked him from that sixth-floor window. See also inside covers, Shoneyfelt Exhibit 25, aerial photograph.



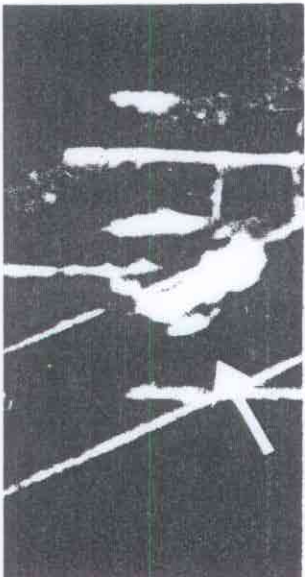
Oswald

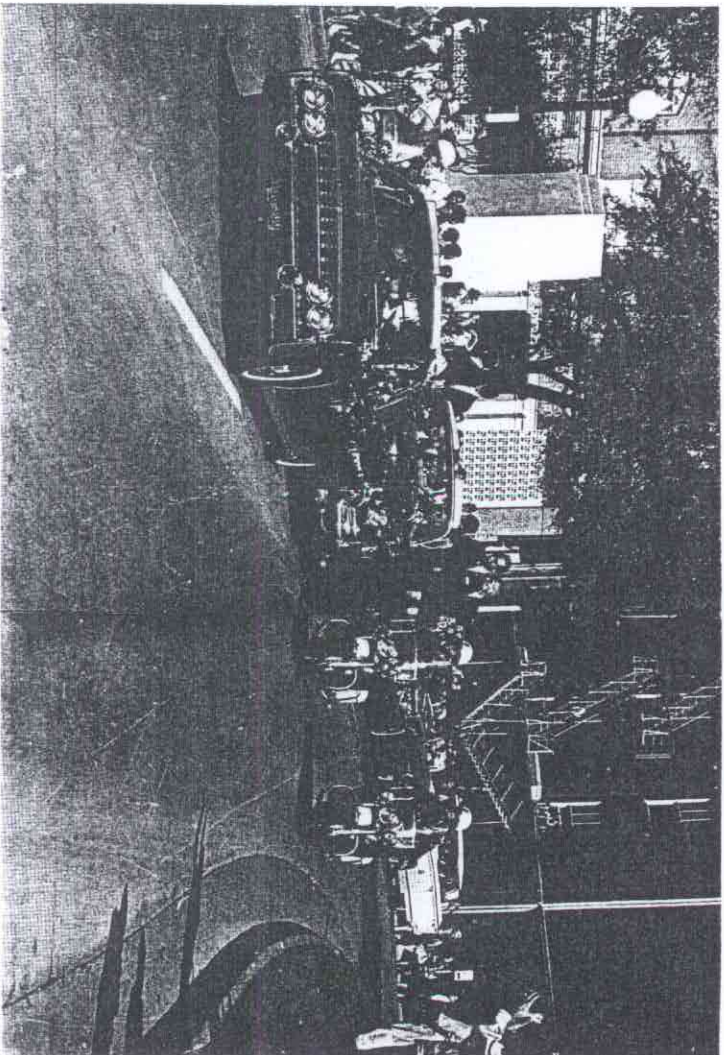


Lovelady



Aerial photo proves that from Altegens's position (as marked by label) to the TSBD doorway, the line of sight in relation to the fourth road stripe coincides with Frame 255, not 210 as the FBI said. This disproves the Report. (notations added by author.)





Here, for the first time, is the full, unretouched Altagens picture. After first saying they had supplied it and then insisting it was not available, AP provided it, complete with the black edging of the original 35mm negative. If for no other reason this picture was cropped in each of the in-com-plate and inconsistent forms the Commission used because it destroys the entire Report and proves Oswald's innocence. Cropping always eliminated the road stripes by the fourth of

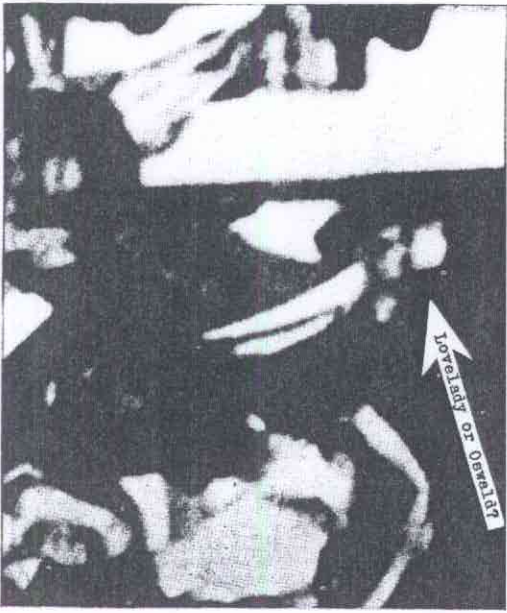
which the car can be placed at the time of Frame 1 Zapruder film, with which this coincides. But the the President at this stripe at Frame 210, the the first shot could have been fired by Oswald. Th the President was not where the FBI placed him dur assassination and was first shot when the tree bit from that sixth-floor window. See also inside cover Shenyfelt Exhibit 25, aerial photograph.



Loveland.

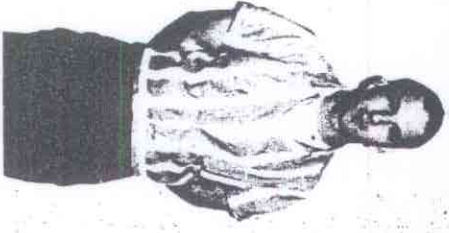
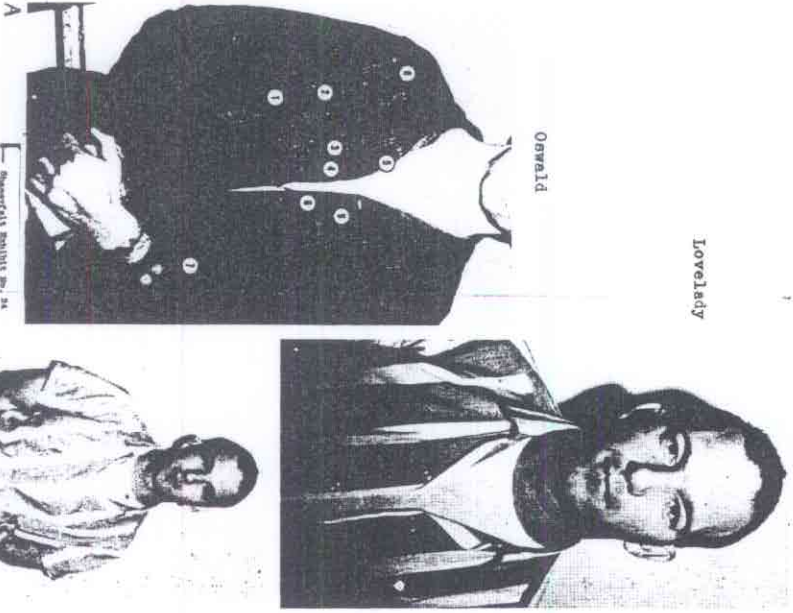
Oswald

Here, for the first time, is the full, unretouched Altgens picture. After first saying they had supplied it and then insisting it was not available, AP provided it, complete with the black edging of the original 35mm negative. If for no other reason this picture was cropped in each of the frames and inconsistent forms the Commission used because it destroys the entire Report and proves Oswald's innocence. Cropping always eliminated the road stripes by the fourth of



Oswald or Lovelady in doorway? Compare shirt in which Oswald was arrested (FBI version cuts off head, which shows hairline not Lovelady's but like Oswald's) with great enlargement from Altgens picture, then with official FBI pictures of Lovelady in shirt he told FBI he was then wearing. Note buttons missing on shirt in Oswald arrest photo and some buttons open on shirt in doorway. Identical turfs in right collar, similar patterns, cuffs (Lovelady's shirt short-sleeved), J. Edgar Hoover stated: "On February 29, 1964, Billy Nolan Lovelady was photographed by Special Agents of the FBI at Dallas, Texas. On this occasion, Lovelady advised that on the day of the assassination of President John F. Kennedy, November 22, 1963, at the time of the assassination and shortly before, he was standing in the doorway of the front entrance to the TSHBD where he is employed. He stated he was wearing a red and white vertical striped shirt and blue-jeans." The Commission, from whose files I obtained this document and related photo, suppressed them from its Report. Oswald could not have been simultaneously a sixth-floor assassin and a first-floor observer.

which the car can be placed at the time of Frame 255 of the Zapruder film, with which this coincides. But the FBI placed the President at this stripe at Frame 210, the time it says the first shot could have been fired by Oswald. This proves the President was not where the FBI placed him during the assassination and was first shot when the tree blocked him from that sixth-floor window. See also inside covers, Shenyfelt Exhibit 25, serial photograph.



Aerial photo marked by I. slight in re with frame proves the

Cropped from scene on the ing distress from the op enlarged fr Photographe although hi arrested in

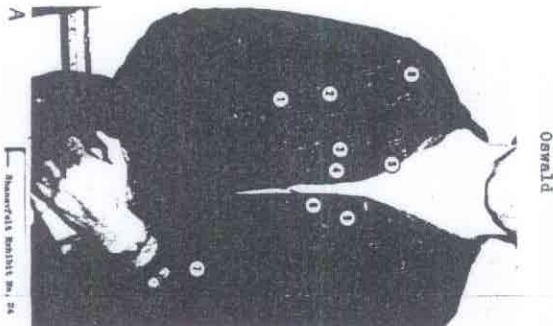
ens
ben
e with
no
com-
9 It
3.
th of

which the car can be placed at the time of Frame 255 of the Zapruder film, with which this coincides. But the FBI placed the President at this stripe at Frame 210, the time it says the first shot could have been fired by Oswald. This proves the assassination was not where the FBI placed him during the assassination and was first shot when the tree blocked him from that sixth-floor window. See also inside covers, Shenyfelt Exhibit 25, aerial photograph.

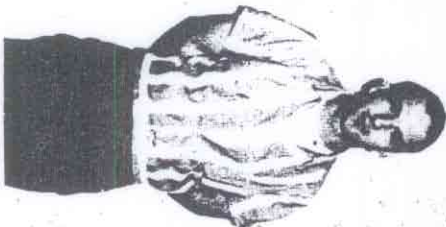


Oswald
airline
nt from
velady
alisting
on shirt
patterns.
stated:
rephed by
ession,
of Presi-
f the as-
doorway
He
shirt
ained
Its Report.

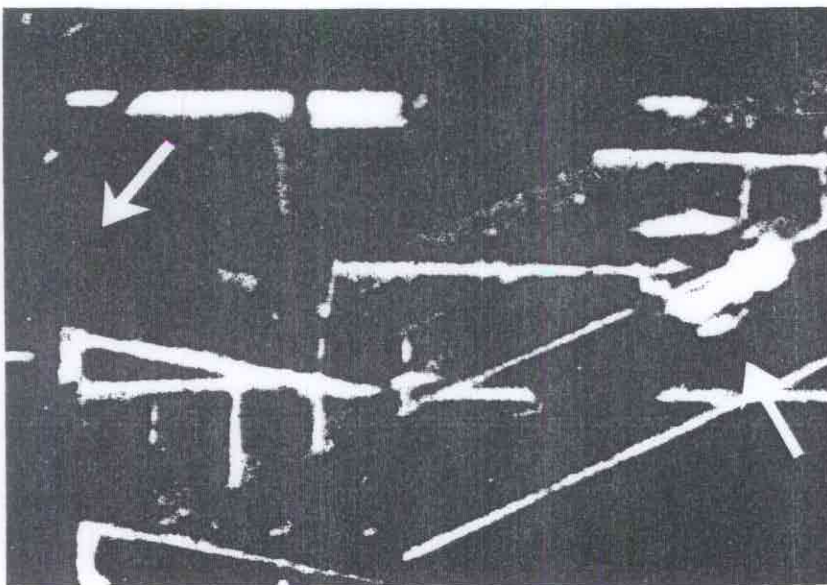
27



Lovelady



Aerial photo proves that from Altgens's position (as marked by Liebsler) to the TGBD doorway, the line of sight in relation to the fourth road stripe coincides with Frame 255, not 210 as the FBI said. This disproves the Report. (Notations added by author.)



Cropped from all versions of the Altgens picture is this scene on the west wall of the Dal-Tex Bldg: a man in swimming dress and below him an arm-like object projecting from the open second-floor window (p. 216). This is greatly enlarged from pinhead size on a 35mm negative. Professional Photographer Altgens belatedly was heard for but 15 minutes, although his is the most important single picture. A man was arrested in this building. The Report ignored that also.