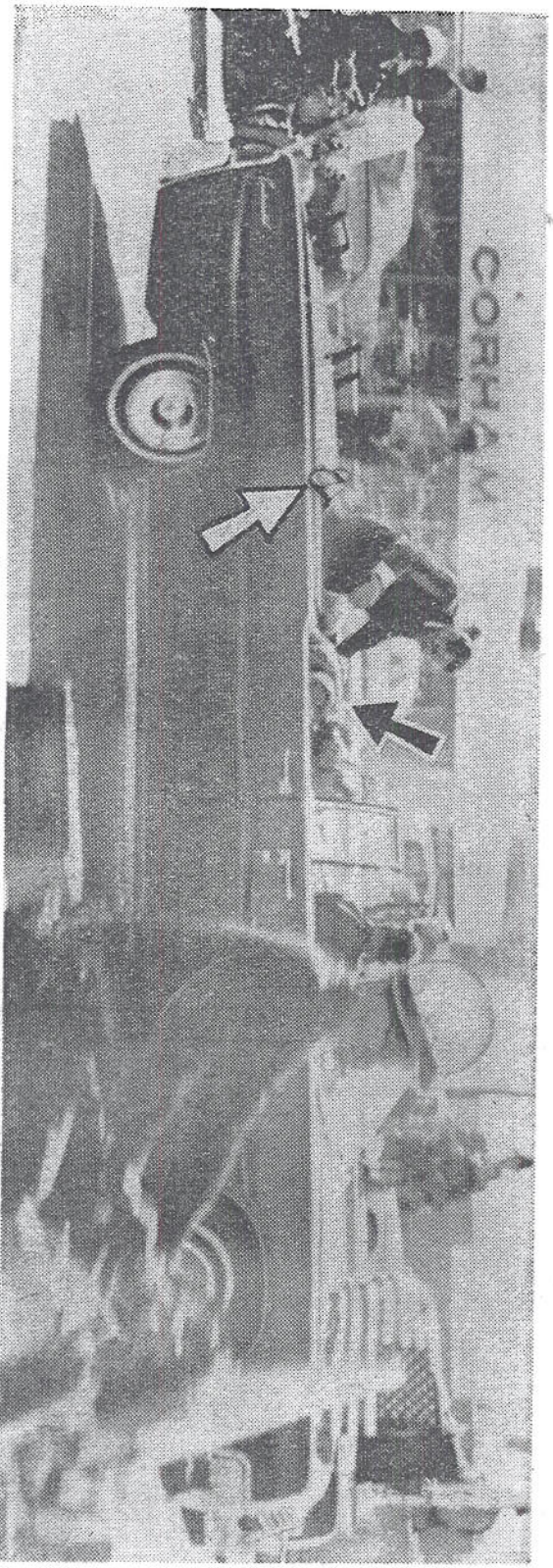


# The President's Death Ride



—Associated Press and United Press International photos.

The picture (above), made moments after President Kennedy was shot in Dallas, Tex., shows his limousine speeding toward Parkland Hospital. White arrow indicates Kennedy's foot protruding over the side of the car. Black arrow points to Mrs. Kennedy, leaning over her mortally wounded husband. A Secret Service agent stood in the back of the car. Photo was made by an amateur photographer. Photo immediately below was taken a split second after the bullet hit Kennedy. It shows the late President slumping over the arms of his wife. The picture was made by a Dallas housewife with a Polaroid camera. She said she snapped the picture immediately when she heard the shot. Then the presidential car (shown in the bottom photo) sped at 90 miles an hour onto the parkway to the hospital, trailed by other Secret Service cars.





