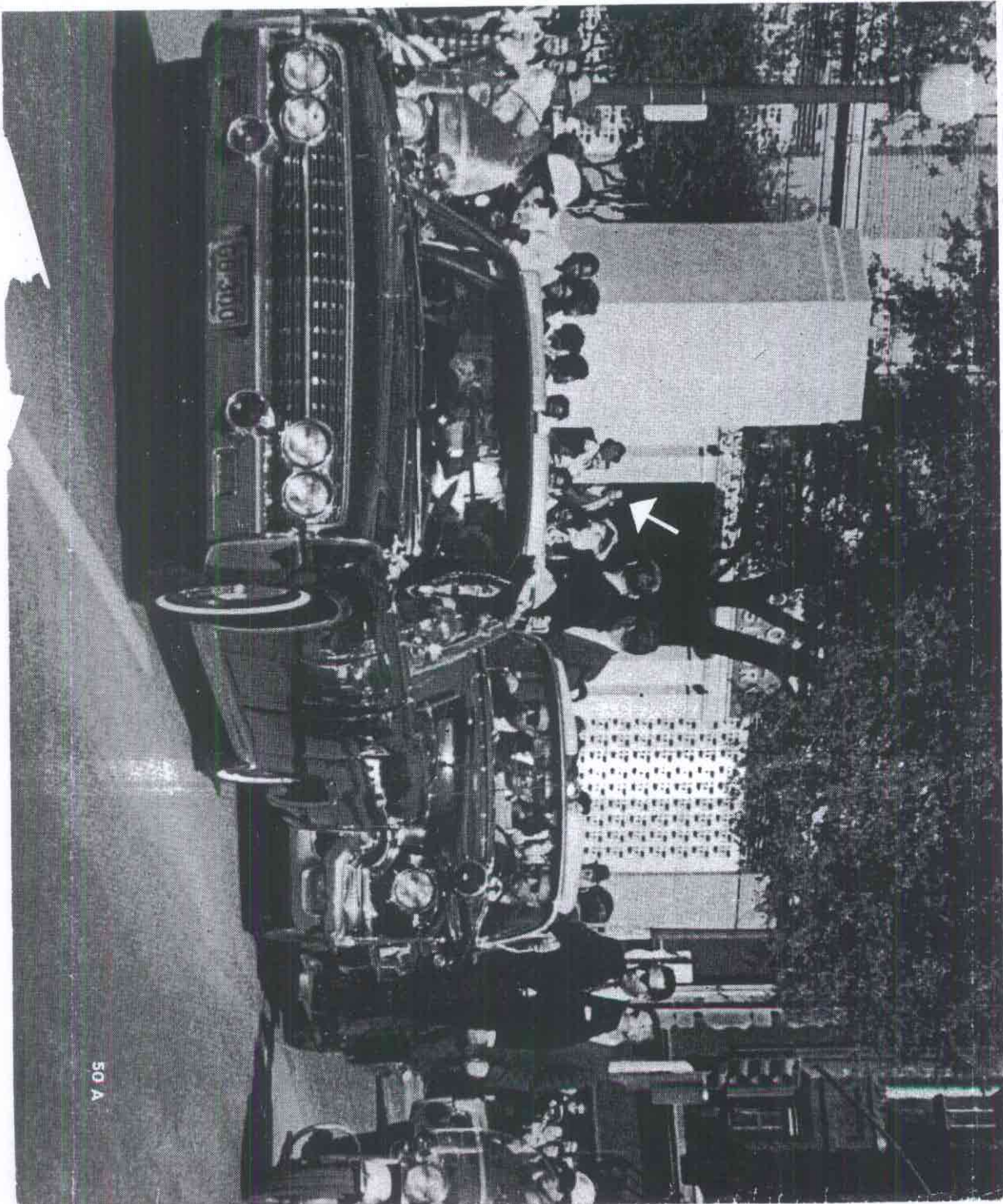


he was shot. Close examination of an enlargement of the area in front of the Depository (*above*) showed a man (*arrows*) who seemed to resemble Oswald. If it indeed was he, then it would not have been possible for Oswald to have fired from the window. But a check of Depository workers revealed the man was not Oswald but Billy Lovelady, another employe.

CONTINUED



50 A