

14760
Sears Rifle Rem. "Lawmaster" # 461476 with scope
interests # A 17350 (with clip)
(NR-NCIC or USPI)

Rem. New cond. except for few scars on stock & barrel
Scope " " (SN bottom of window, obj. plate)
" Redfield " stickers present on window, obj. caps
" " missing from Elev. " "

Redfield Gunsight Co

1315 South Clarkson

(Not listed as job in 1991)

Denver, Colo 80210

-Standard Weaver type scope mount. No Pic. attach
from any previous scope. No mount Assy. or

Scope set on 6 3/4 X, has medium (photo) crosshair

152
In Box Q1, for 243 Win Browning "Safari" rifle (right 22" barrel)

rifle SN 474425 (not 444215 or 444725)

(NR-NCIC or USPI)

474425 (other code)

(Action (Finner 220) shows 5 at end in yr of mfg. 2 in rifling)

No alumin. or brass scratches or markings on gun

No paint, wood or other foreign material on gun.

22

30-06 Rifle

Rem. "Sawmaster" #461476 with scope

4760

o Linters 4/5/68

A 17350 (with clip)

o - clip

(NR-NCIC or NSPI)

Rem. New card, except for few scars on stock & barrel forearm

Scope " " (SN bottom of window, adj. plate.)

" Redfield " sticker present on window, adj. cap

" " missing from Elev. " "

Redfield Gunsight Co

1315 South Clarkson

(Not listed as policy in 1970)

Denver Colo 80210

- Standard Weaver type, mount to 10" scope from any gun, rings, mount ASSE 40x

Scope set on 6 3/4 X, has medium (prob.) crosshair

22

in Box Q1, for 1203 in Browning "Safari" rifle (1972) (model)

rifle SN 474425 (not 444715 or 444725)

(NR-NCIC or NSPI)

474425 (other code)

(Atlas (Simon) rifle) serial 5 at end is 474425. Z in rifling.

No alum. or screws scratches or mangle of gun

No paint, wood or other foreign material on gun.

Mfg. ballistic data for .3006 SpA 150 gr PSP CL R-P
 (~~not~~ listed in 1965 Peters Cat. - Listed in 1963 Cat. Peters
~~not~~ " " 1948 Peters Cat. " " 1965 Rem Cat
 Listed → 1955

R-P headstamp origin

Pointed SPCL	Muzzle Vel					Muzzle Energy					sighted in 200 yds					
	100	200	300	400	500	100	200	300	400	500	100	200	300	400	500	
150 Hi-Speed	2970	2670	2400	2130	1870	2970	2370	1920	1510	1190	930	1.9	0	-7.5	22.6	-45.7

Binoocular 7x35

D.P. Bushnell Bldg. Inc. 639

Bushnell Bldg.
Pasadena, Calif. 91107

NR-NCIC 4/5

(Not listed as policy in NSPI)

Q64 MC - c bullet - NC - Q2 rifle - muzz. ribs of Vol
Blood and body tissue clear to muzz.
wt 10.38 (orig. 150gr R-P) Face ribs on base portion

#L46 6

Dir Right

Land width .040 ± .002

Groove width .115

Dia .308 - .3087 - .30 cal.

Length - Muzz

Rifling N -

Savage ^{300f} Model ²¹⁹ 110, ³⁰⁻²⁰ Game A 325, 725A, 325B, 325C; Saw. 300 rev. 99, 110, 110C

Remington ³⁰⁻⁰⁶ Models 721, 725, 740, 760; Saw. 300 Win Mag. M110
Saw. 300 Saw - 89

Rem. ³⁰⁸ M 722, 760, 600; 300 Westing. Mag.

Q64 like bullets in Q4-Q8 + cd by pky Q3 + ctyg like Q18

Q64 diff from bullets in Q9-12 (military ball)

Note same bullet loaded into ^{30 06} .300 Saw
³⁰⁸

" " sold for reloading - .30 cal

Q64 MC - c bullet - NC - Q2 rifle - muffed ends of Vol
Blood and body tissue due to muffed.
Wt 70.38 (orig. 150gr R-P) Feas muffed on base portion

#L+G 6

Dir Right

Lead width .040 ± .002

Groove width .115

Dia .308 - .3087 - .30 cal.

Length - Mutil

Refling N -

Savage ^{300f}, Model ²¹⁹ 110, ^{110c} ; ³⁰⁻³⁰ Game M 325, 325A, 325B, 325C ; Saw. 300 w/ 99, 110, 110c

Remington ³⁰⁻⁰⁶, Models 721, 725, 740, 760 ; Saw. 300 w/ 99, 110

Rem. ³⁰⁸ M 722, 760, 600 ; 300 Weatherly Mag.

Q64 like bullets in Q4-Q8 + ed be ply Q3 + etgs Q4-Q8
Q64 diff from bullets in Q9-12 (military ball)

lot same bullet looked into ^{30 06} ^{300 Saw} ³⁰⁸

" " sold for reloading -- 30 cal

Bullets

Powder

Q4 wt = 150.75 g_w wt = 50.50 g_w

Q5 wt = 148.95 g_w wt = 50.85 g_w

Q6 wt = 149.45 g_w wt = 50.90 g_w

Q7 wt = 150.25 g_w wt = 50.70 g_w

Q8 wt = 149.70 g_w wt = 50.82 g_w
var 1.80g .4g var.

Q9 wt = 151.44 g_w wt = 49.10 g_w

Q10 wt = 151.10 g_w wt = 49.50 g_w

Q11 wt = 151.50 g_w wt = 49.70 g_w

Q12 wt = 150.31 g_w wt = 49.44 g_w
(var 1.13g) ↑ .6g var

Q3 30-06 Spfld R-P cartridge case

Mkt side Q3 R

Ident Q2 gun

No mks other than ext mks from Q2 and BFE-FL mks
in value - Some mks under rim apparently by mfg loading
tools since ^{type} mks on Q4-Q8 and Q9-Q12 and
on clips in 3 boxes this type amm in test supply in lab.

Q3 like clip case portions of Q4-Q8

Q3 and Q64 can be from same clip - no mks for sig. amm.

Q3 has 1 ext mks - H 5 -

Q3 has mfg shell holder - machine mks - loading op.

Q3 has chamber mks - H 2

Q3 has no other mks value

Specimen Serial 700 - 1000

Specimen Serial 22

W. J. Fisher: 10/10/68

Responsible Supply Co

11/5

Q3 .30-06 Spfd R-P cartridge case

HLR side Q3 R

Ident Q2 gun

No nicks other than cut nick from Q2 and B7c - Fluke
in value - Some nicks under rim apparently by ruff loading
tools since ^{cut} nicks on Q4-Q8 and Q9-Q12 and
on cips in 3 boxes this type amm. in test supply instab.

Q3 like sty case portions of Q4-Q8

Q3 and Q64 can be from same sty - no nicks for sty amm.

Q3 has 1 cut nick - HL R -

Q3 has ruff shell holder - machine nicks - loading ops.

Q3 has chamber nicks - HL Q2

Q3 has no other nicks value

Upon exam of HL 700 - 400

cut nicks on box Q2

Identified - identified

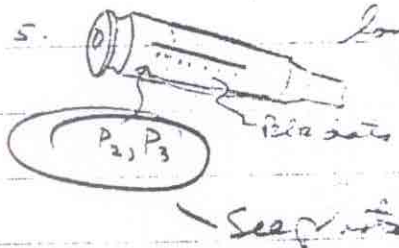
Lawrence Supply Co.

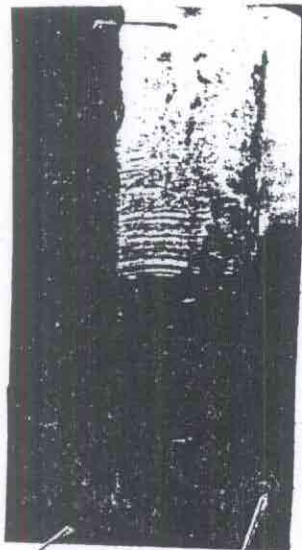
112

115

Q₃ Part case.

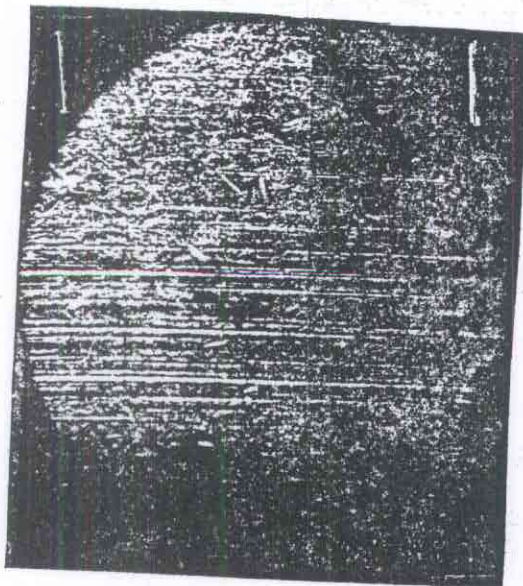
1. Wheel Q₃ R
2. Black marks show areas ident w/ Q₂ except BF.
3. Areas under rim - w/ for ext. - / Q₂ extractor is "kane, low-type"
4. Rim shows only 1 extractor mark. See photo P₁

5.  long scratch ident w/ Q₂ no photo.



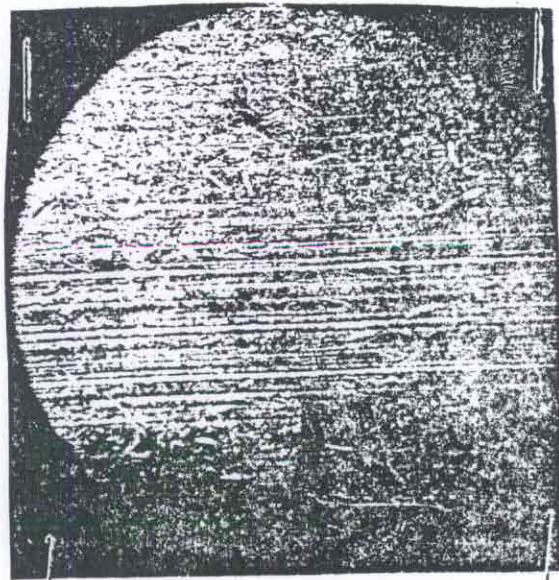
P₁
48mm

Q₃ Q₂



Q₃ Q₂

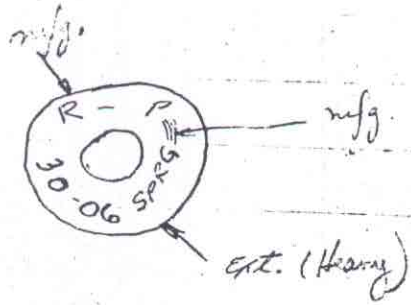
P₂
48mm



Q₃ Q₂

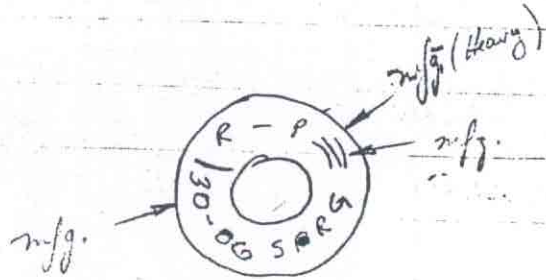
P₃
48mm

Q4

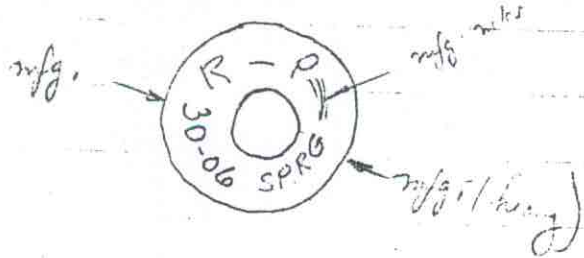


place into shell holder in lab.

Q5

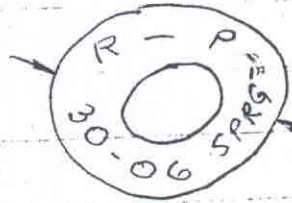


Q6



Q7

focus (right)



heavy mfg.

Q8

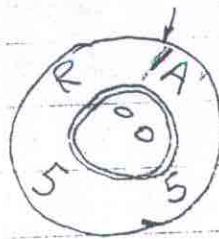
mfg.



heavy mfg.

Q9

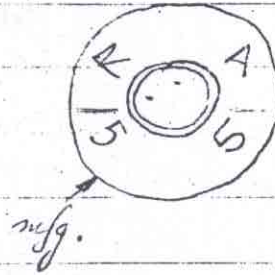
purple H₂O marking



heavy sub
machine gun belt

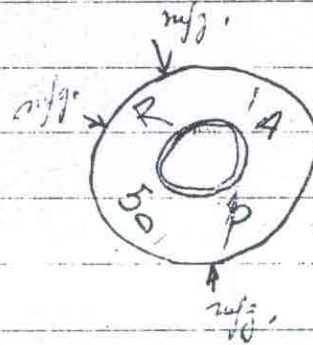
Q10

people H₂O proofing
similar link make as Q9



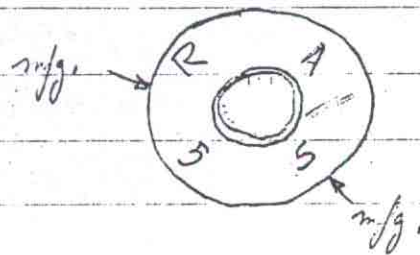
Q11

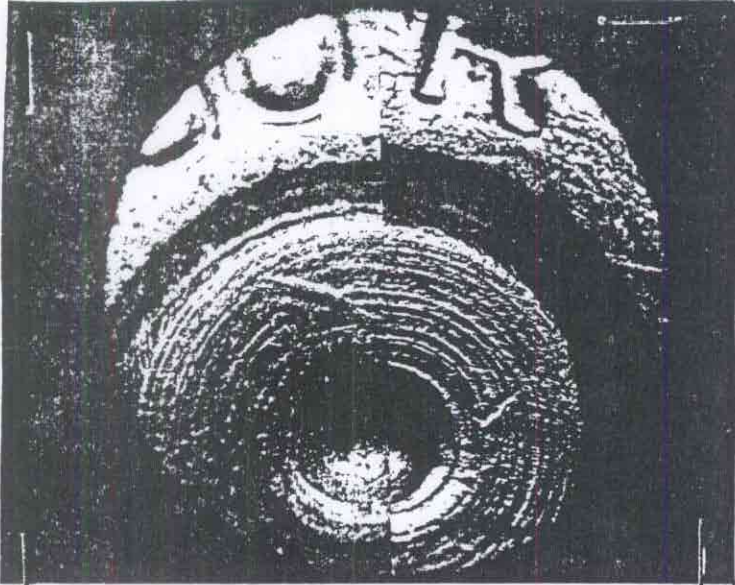
people H₂O proofing
similar link make as Q9



Q12

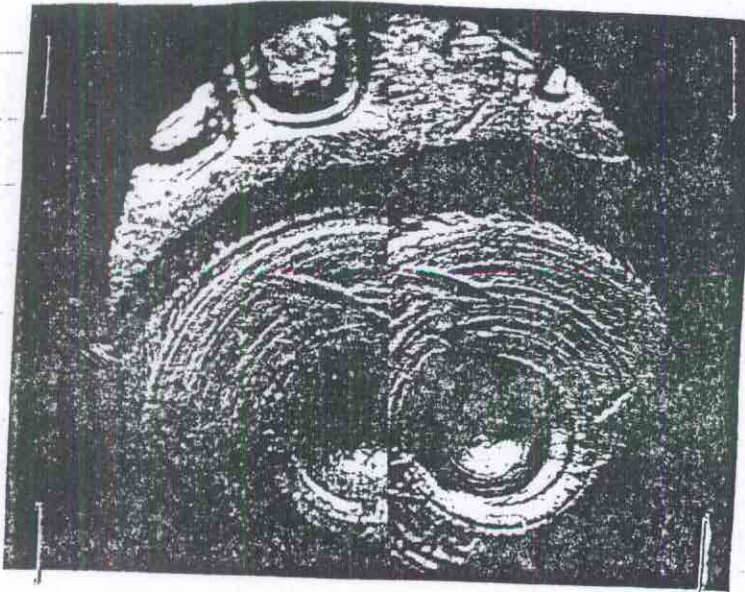
people H₂O proofing
similar link make as Q9





Fungus pin - NG
for comp. purposes

Q3 48mm Q2



Q3 48mm Q2