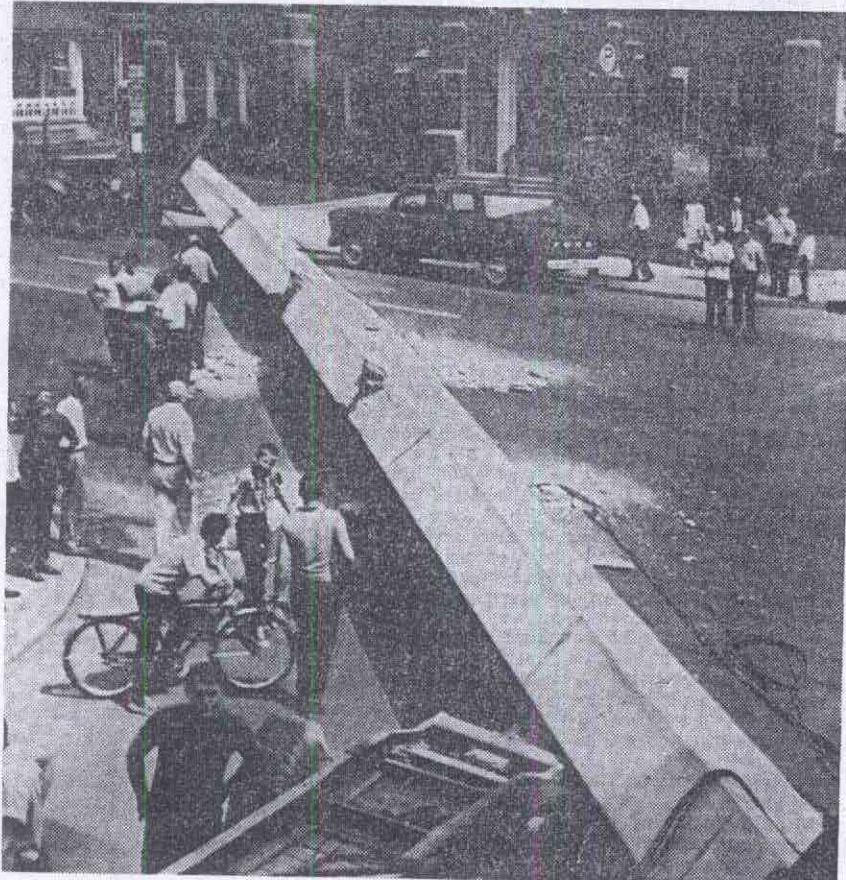


Post 7-9-68



Associated Press

**DETOUR** — A 160-foot, 50-ton slab of cement destined for a highway bridge fell off a truck in Hazleton, Pa., yesterday, blocking the main intersection for hours.

## Sirhan Is Moved to Court Cell

LOS ANGELES, July 8 (UPI)—Sirhan B. Sirhan charged in the slaying of Sen. Robert F. Kennedy, was secretly moved from a hospital ward at the county jail to the holding cell where he is expected to stay during his trial, it was disclosed today.

Sheriff Peter J. Pitchess said the move was made Sunday as "part of an over-all previously scheduled program of security for the inmate."

County supervisors authorized Sirhan's new quarters in the

Hall of Justice are about a mile from the new county jail where he was held in the hospital section.

Estimated expenditures up to \$20,000 to turn the cell and courtroom where Sirhan will be tried into a fortress.

Heavy steel shields have been placed over windows along a sealed passageway where the defendant will walk from the 13th-floor cell to the 8th floor courtroom. Only jail elevators run above the 8th floor.

New walls and steel doors were erected in the cell.

The special preparations were similar to those made for the trial of former Nazi Adolph Eichmann in Israel in 1961. Eichmann was kept in an isolated cell on the top floor of the special courthouse near Jerusalem.

During the trial, Eichmann sat at all times in a bullet-proof glass cage. The Los Angeles sheriff's office reportedly contemplates something similar for Sirhan.