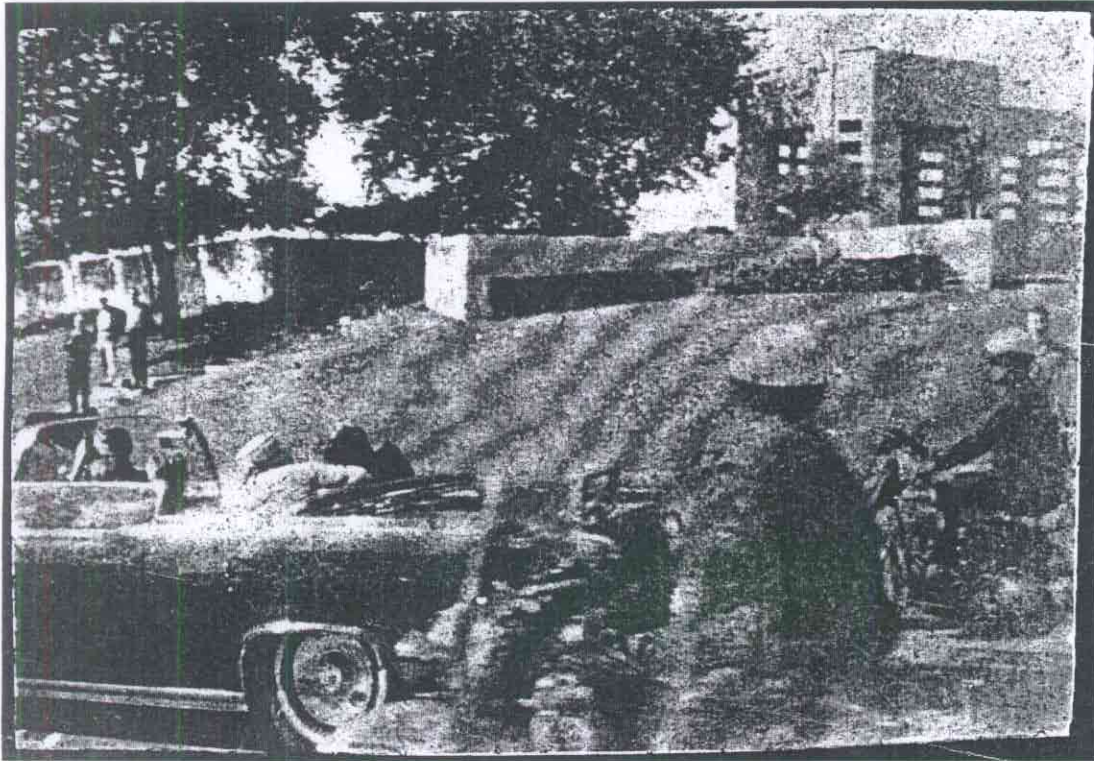


WHERE DID THE FATAL HEAD SHOT COME FROM ?



According to numerous doctors and nurses at Parkland Hospital and almost every JFK assassination researcher, the fatal head shot was fired from the front and to the right of the president.

If this is true, then the most perfect angle could have been from the storm drain located at the west end of the wooden stockade fence on the famous grassy knoll.

We watched CNN-TV, and researcher Jack Brazil, send a research team member into the storm sewer system in Dealey Plaza. Many people were unaware of this little known theory. Since then, many hours of research at the grassy knoll have been spent studying the various angles of possible snipers. A rapidly growing conclusion is the storm drain at the end of the stockade fence is a possible angle for the reported damage to the President's head.

Also note that the bridge railing and fence is at a 45 degree angle from the railroad overpass, making it a blind spot from any observers that would be on the bridge overlooking Elm St.

On Nov.22,1963, the wind was blowing due east at 13 mph. As the motorcade traveled west on Elm Street, Senator Ralph Yarborough, who was in the second car behind President Kennedy, later stated, " I smelled gunpowder." If the fatal head shot was fired from the storm drain at the end of the stockade fence; then it would have been quite possible to have encountered the smell of gunpowder from an open car driven through this area.

Moments after the assassination, a motorcycle policeman was photographed standing on the concrete railing of the railroad overpass. Just a few feet from his location was the storm drain from where the fatal head shot could have been fired. Many people ran to this location after the shooting.....why? One of the first police radio responses was to get someone up on the triple underpass and to check out the railyards.

The alleged exit wound and violent backward motion of the President's head are more consistent with a shot being fired from the storm drain location than that of a possible sniper location near the east corner of the stockade fence. According to Dr. Charles Chrenshaw, there was what appeared to be a large exit wound on the right rear of the President's head. If the fatal shot was fired from the easternmost area of the fence, would it not make sense that the left side should be missing and not the right?

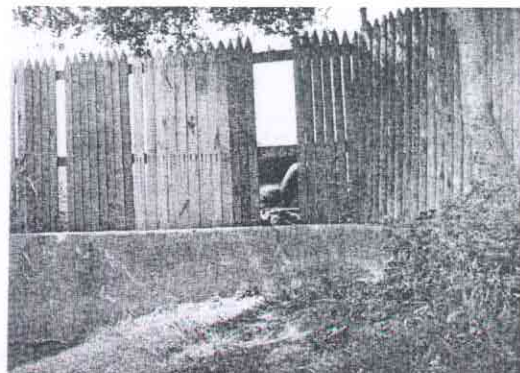
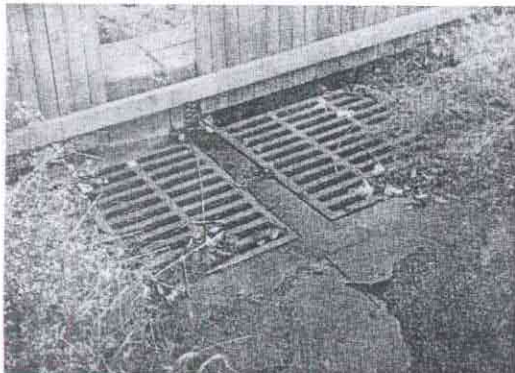
If the Senate House Select Committee on Assassinations is correct with their conclusion that there is a 95% probability of a fourth shot being fired from behind the stockade fence on the grassy knoll, this could very well have been the location.

The storm drain could have provided an underground escape route leading to the center of Main St. and then to Industrial Blvd.

Many observers watched Jack Brazil and his team of dedicated researchers send a man into the storm sewer system on Elm St. After entering the system, the same man walked out of a nine foot storm sewer pipe that emptied into a drainage ditch of the Trinity River at Industrial Blvd. It took fifty four minutes to go from Elm St. to the exit point, even with debris, blockage and a slight drizzle of rain.

The work of Jack Brazil and his research team is being noted by not only CNN-TV, but by several famous authors of best selling books on the JFK assassination. A few of these authors have been seen checking out the storm drain at the west end of the stockade fence recently. This angle and position is being brought into more comprehensive study and research thanks to Mr. Jack Brazil.

For more information contact Ray Evans P.O. Box 461, Tyler Texas 75710 . PH-(903) 566-2356



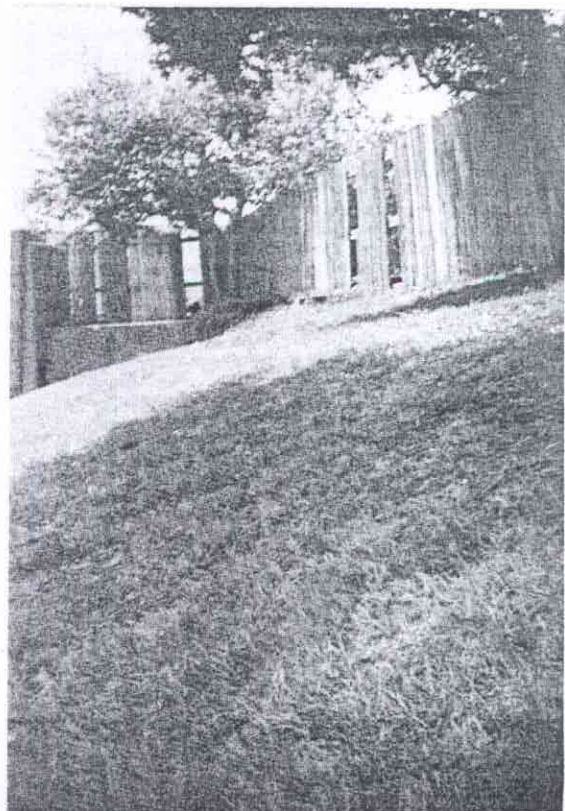
THE STORM DRAIN



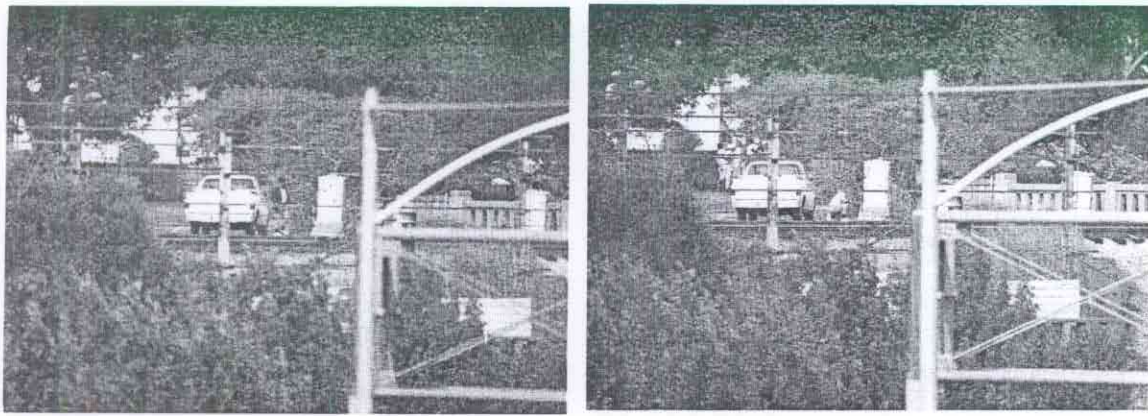
JACK BRAZIL'S RESEARCH TEAM ENTERS THE STORM SEWER SYSTEM ON ELM ST.



RESEARCH TEAM MEMBER MAKES EXIT OVER 2400 ft. LATER



A DIRECT VIEW



RECENT PHOTOS TAKEN FROM FREEWAY OVERPASS

Ed Hoffman is a man that claims to have seen a man behind the stockade fence hand a rifle to another man just after the assassination. The rifle, according to Mr. Hoffman, was quickly disassembled and put into a toolbox. The second man, dressed in a railroad worker's uniform, then walked away from the scene toward the train tracks. Mr. Hoffman claims this event took place at the west end of the wooden stockade fence, where the railroad bridge over Elm St. meets the stockade fence. He also states that the rifle was taken apart behind a large railroad switching box, located approximately 20 ft. from the storm drain. Could there be a possible connection of the two areas? If so, could this be where the fatal head shot was fired from?

According to Mr. Hoffman, he was parked on the I-35 Freeway overpass west of the grassy knoll and had a direct view of the activities behind the fence. The view is now blocked by a large billboard that was at a much lower elevation on Nov.22,1963.

Last week the billboard was removed for a few days during a sign change and provided a perfect opportunity to take a few photos from the overpass where Mr. Hoffman tells us he was located.

So that we all could better understand his vantage point, without the billboard in the way, we decided to show you the photographs taken last week. It appears that Mr. Hoffman could have a good view of the area behind the grassy knoll. What do you think?



"THE MOTORCADE IN DOWNTOWN DALLAS"

This beautiful photograph is available in full color 8"x10". A limited edition of the highest quality now at J.F.K.-A.I.C. Dallas, Texas

Secretary of the Navy
John B. Connally Jr.
Fort Worth, Texas

Lee H. Oswald
U.S.M.C.R. 1653230
Kalinina St. 4-29
Minsk, U.S.S.R..
January 30, 1961

Dear Sir:

I wish to call your attention to a case about which you may have personal knowledge since you are a resident of Fort Worth as I am.

In November 1959 an event was well publicized in the Fort Worth newspapers concerning a person who had gone to the Soviet Union to reside for a short time, (much in the same way E. Hemingway resided in Paris.)

This person in answer to questions put to him by reporters in Moscow criticized certain facets of our life. The story was blown up into another "sensational" with the result that the Navy Department gave this person a belated dishonorable discharge, although he had received an honorable discharge after three years service on Sept. 11, 1959 at El Toro, Marine Corps base in California.

These are the basic facts of my case.

I have and always had the full sanction of the U.S. Embassy, Moscow U.S.S.R. and hence the U.S. government. In as much as I am returning to the U.S.A. in this year with the aid of the U.S. Embassy, bring with me my family (since I married in the U.S.S.R.) I shall employ all means to right this gross mistake or injustice to a born-feeble U.S. citizen and ex-service man. The U.S. government has no charges or complaints against me. I ask you to look into this case and take the necessary steps to repair the damage done to me and my family. For information I would direct you to consult the American Embassy, Chikovski St. 19/21, Moscow, U.S.S.R.

Thank You

Lee H. Oswald

LETTER from Lee Oswald to Gov. John Connally about the dishonorable discharge, which Oswald had received.

ASSASSINATION RESEARCH
QUESTIONS RAISED
QUESTIONS ANSWERED

"LET THE WORD GO FORTH..."

KENNEDY
COMMAND
POST



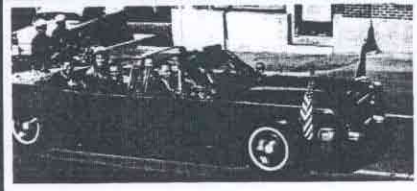
Kennedy Command Post
Paul D. Pedro
1858 Chataworth
Roseville, MN 55113

PAUL D. PEDRO
(612) 888-0707

RESEARCHER'S NOTE

Abraham Zapruder's office was located in 501 Elm St. Bldg. - It was Jennifer Jr. Inc. This is where he took his camera after he filmed the assassination. His business is listed

ELM ST	ON TWIN
1 BL N OF 400 MAIN	
2900 BL INT AT 20	
OAKLAND	
ALSO SEE INVING	
ALSO SEE LANCASTER	
*****ZONE 2*****	
TO- 2399 12 31A	SC.F 6
ALL YMBACON INC	R181251
*SM PUBLISHING CO	-R170574
*STHWSTN PUB CO	-R170574
*ROY F COOPER	-R170574
*O V CAMPBELL	-R173521
*TEXAS SCHL BK DPST	-R173521
*JACK C GASON	-R173521
*SCOTT FORESHANK CO	R174340
*JOE S BERGIN	R174340
*LYONS SCARAHANAN PUB	R188373
*MCGRAM-HILL BOK CO	-R128802
*GREGG PUBG DIV	-R128802
*AMER BOOK CO	-R175988
*MCGRAM-HILL BOK CO	-R175988
501 MGB MFG CO INC	-R182349
*EDDIE WISTER INC	-R182349
*ADAPTABLES INC	-R182349
*MR EDDIE INC	-R182349
*MARILYN BELT MFG	R128063
*MORTY FREDMAN	R128063
*DALLAS URAMUM&OIL	R128063
*EDWARD BARRY INC	-R128436
*MILLER CUPAIOLI IN	R128438
*STANLEY OF DALLAS	R171597
*MCKELLS OPTS&R INC	R171597
*EDWILL FASHIONS	R172431
*RALPH W LEEDS	-R172431
*CUPAIOLI/LEEDS LTD	R172431
*JENNIFER JR INC	R106071
509 JEANNE MFG CO	R173481
801 PURSE CARPET CO	R127267
*PURSECO INC	R127267



Historical
Kennedy Assassination
BUS TOUR
Kennedy Assassination Tours
214/369-9406 A.M. 214/871-2770 P.M.
Group Rates are Available