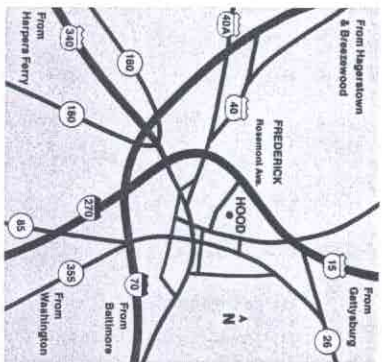
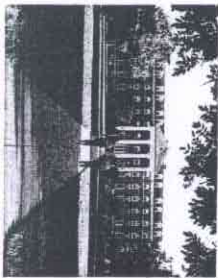


Hood College CAMPUS GUIDE



Directions to Hood

From the north: Follow I-95 south (New Jersey Turnpike) through Delaware to the junction with the Baltimore Beltway (I-695). Then follow I-695 west (Towson) to the exit for I-70 west. Once on I-70, follow the directions from Baltimore.

From the west: Follow I-70 east from Hagerstown. Take the first Frederick exit to Route 40. Follow Route 40 east to Route 15 junction. Follow Route 15 north to Rosemont Avenue exit. Turn left onto Rosemont. Travel one-half mile and turn left at the entrance to Hood.

From Baltimore: Follow I-70 west from Baltimore to Frederick. Exit onto Route 15 north. Follow 15 north to Rosemont Avenue exit. Turn left onto Rosemont. Travel one-half mile and turn left at the entrance to Hood.

From Washington: Follow I-270 northwest from Washington to the junction with I-70 and Route 15. Follow Route 15 north to Rosemont Avenue exit. Turn left onto Rosemont. Travel one-half mile and turn left at the entrance to Hood.

Hood College
Frederick, MD 21701-9888
(301) 663-5131
(800) 925-1599

Recognized Nationally



Founded in 1893 as a liberal arts college for women, Hood College has been in the forefront of American higher education for nearly 100 years.

Today the College retains its liberal arts tradition and at the same time provides students with career preparation. The mission of the College was, and is, to prepare students for successful lives both in the workplace and the community.

Hood is recognized nationally for academic excellence. Ranked one of the best small comprehensive colleges in the nation by U.S. News & World Report since 1983, Hood was the only women's college in the top 10 in the magazine's latest issue. Earlier, the news magazine had



named Hood the number one small comprehensive college in the East. The *Everywoman's Guide to Colleges and Universities* has named Hood third in the nation for the quality of education it offers women.

Outstanding Faculty

The Hood faculty, women and men selected for their credentials as teachers and as scholars, work closely with students to shape their academic programs. The emphasis on individual attention and excellence in teaching is a distinctive strength of the College.

Hood's undergraduates may combine any of 29 majors with dozens of minors, and are strongly encouraged to take advantage of off-campus internships and other opportunities to gain practical experience. In the graduate program, students may select from among 13 areas of study, or may develop an individualized master's degree program.



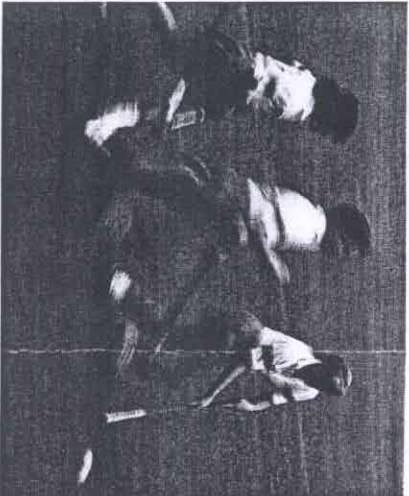
Diverse Students

While Hood is a small college, it serves a diverse group of students. The College has a substantial number of continuing education students (aged 23 and older) working to complete their undergraduate degrees, and attracts many Hispanic, Black and international students. Most undergraduates choose to live on-campus.



Excellent Facilities and Resources

Hood College is located on a 50-acre campus in historic Frederick, Maryland, an hour's drive from Washington, D.C., and Baltimore. Visitors are impressed by the beautiful Georgian style brick buildings and tree-shaded lawns. The 34 campus buildings house



well-equipped science laboratories, music and art studios, modern computer facilities and a computer classroom, a library containing more than 300,000 books and resource materials, and a child development laboratory. The Mura Resource Management Center is nationally recognized as a model for energy management. Groundbreaking for a new library/information technology center is planned for the fall of 1990. The indoor and outdoor pools, tennis

courts, and a mile-long Parcourse exercise track circling the campus are used by students and the community.

Undergraduate Curriculum

Approximately 1,100 undergraduate students from across the nation and more than a dozen foreign countries attend the

College. The student-faculty ratio is 12:1 and the average class size is 15 students. The College has 78 full-time faculty, 76 percent of whom hold the doctorate or highest degree possible in their field of study.

All students take a core of courses that exposes them to modes of inquiry in different disciplines and helps them develop a strong sense of historical perspective in both Western and non-Western Civilizations. Hood offers 29 undergraduate majors in the humanities, social sciences, and sciences, as well as in such career-oriented areas as communication arts, social work, computer science, law and society, and management. Each year more than 400 students earn academic credit while acquiring practical skills in "hands on" internships that enhance classroom learning and employment options.

Graduate Program

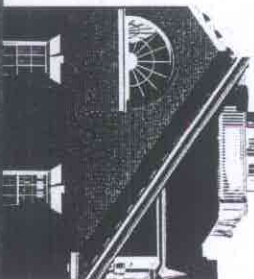
Hood College graduate programs

are designed to meet the needs of students who wish to upgrade their skills or pursue new career options. The College offers the MFA as well as Master of Arts or Master of Science degrees in 13 areas of study.

Graduate students are employed in such fields as education, biotechnology, management, and computer science. The graduate program faculty includes both full-time faculty and adjunct professors who are specialists in their field. While most courses are taught at Hood, the College serves students at off-campus classrooms in Montgomery and Washington Counties.

Conference Groups

Throughout the year Hood welcomes conference groups, providing on-campus housing to small groups during the academic year and to large and small groups during the summer months. The facilities are well-suited for meetings, conferences, workshops, and seminars.



Hood's convenient location near the metropolitan areas of Baltimore and Washington, D.C., also offers conference-goers the chance to visit these cities, each about an hour's drive from the campus, and return to Hood for meetings and recreation.

Best of Two Worlds

Hood's location offers the best of two worlds, the beauty of the county and the resources and excitement of the city.

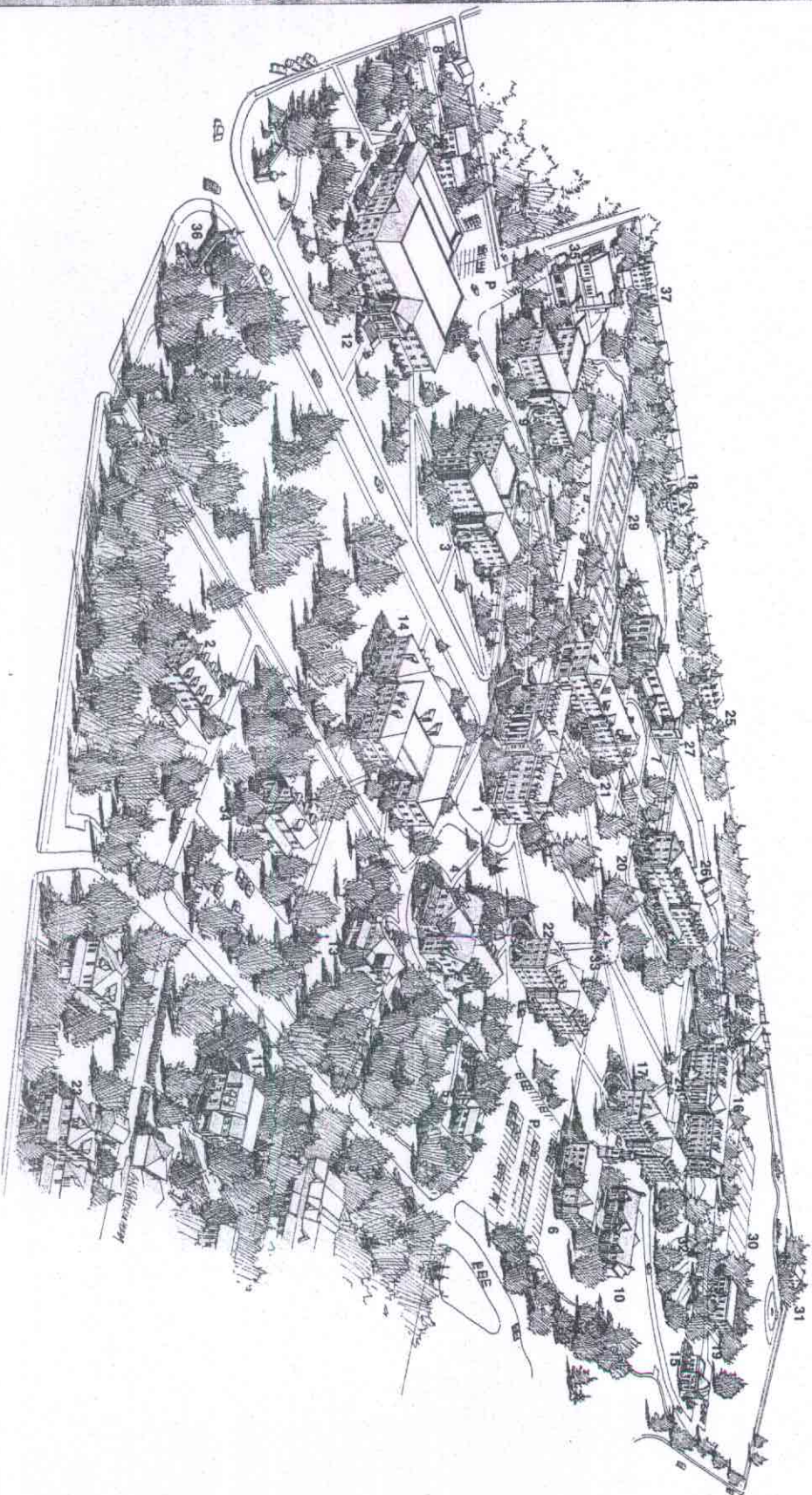


Frederick City's celebrated historic district, a few blocks from Hood, offers charming shops, antique stores, and dozens of restaurants and night spots.

Frederick County, with a population of more than 120,000, is rich in history, tradition and natural beauty. The Appalachian Trail, the picturesque C&O Canal, Camp David, the Secon Shrine, and state and national parks are within a half hour's drive. Historic Hagers Ferry, West Virginia, and the Civil War battlefields of Gettysburg, Pennsylvania, and Antietam, Maryland, are also nearby.

The cultural resources of Baltimore and Washington, D.C., include national monuments, museums, art galleries, theaters, and concert halls.

Campus Map



**Academic/
Administrative
Facilities**

1 Alumnae Hall (1915)
Office of the President;
Division of Administration
and Finance (Vice President,
Campus Development,
Business Office, Post Office
and Mail Center, AV and
Publications Services) and

2 Alumnae House
(1920, renovated 1989)
Division of Development
and College Relations (Vice
President, Alumnae
Programs, Conventional
Planning and Programs)

3 Apple Library
(1991, annex added 1982)
Houses, 162,000 volumes,
995, 17,000 sq. ft.

5 Carson Cottage
(1923, addition 1959,
renovated 1989)
Office of Communications
Containing Education
6 Coffman Chapel (1955)
Music studio, classrooms,
Department of Religion and
Philosophy, Chaplain

9 Hodson Science Center
(1957, link added 1979,
renovated 1985)
Science laboratories,
classrooms, Departments of
Biology and Chemistry,
Physics and Astronomy

13 Sweeny Cottage
(1918, renovated 1979)
Administrative, Financial Aid

14 Tatem Art Center
(1965) Art studio, gallery,
Bookstore, Hodson Gallery,
Warner Edison Computer
Classroom, Theater
Administration, art language
classroom and language
laboratory, Department of
Art

17 Calhoun Memorial Hall
(1922)
18 German House
(renovated 1976)
Residence for German
language students

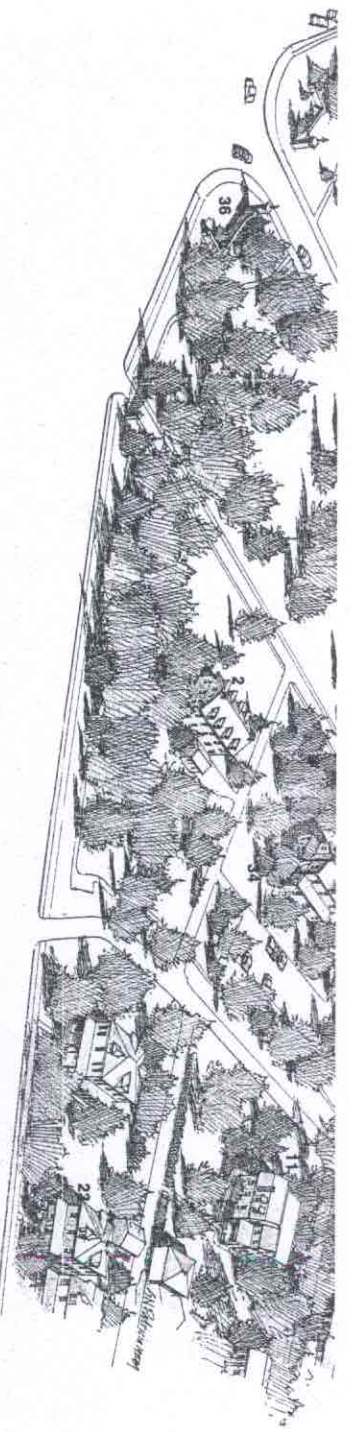
24 Dining Facilities
Dining Hall
(renovated 1989)
Campus Club, Snack Bar

25 Health Center
(renovated 1981)
26 Hunsinger Aquatic
Center (1975)

31 College House
Crafts laboratory, sports
equipment

32 Hodson Outdoor Theater
(1958)

33 Pergola
Center of the campus



**Academic/
Administrative**

- 1** Alumnae Hall (1915)
Office of the President, Division of Administration, and Finance; Vice President, Controller, Accountant, Business Office, Post Office and Mail Center, AV and Duplating, Security and Safety; Division of Academic Affairs; Vice President, Registrar; Division of Student Affairs (Vice President, Career Planning and Placement, Student Activities and Services); Division of Computing, Research, and Planning; Vice President, Office of Institutional Research, Administrative Computing; College Receptiption; Conference Office; classrooms, Laboratories, Department of Home Economics
- 2** Alumnae House (1920, renovated 1989)
Division of Development and College Relations; Vice President, Alumnae Programs, Alumnae Planning and Programs)
- 3** Apple Library (1941, annex added 1982)
Houses, 162,000 volumes, 995 periodicals, 8,900 texts and 260,000 fiche of microform, and 16,000 audiovisual resource items, Irving M. Landauer Civil War Special Collection, Learning Special Archives, Learning Assessment and Resource Center
- 4** Brobeck Music Hall (1988, enlarged 1922)
Auditorium, music studios, practice rooms, Department of Music (oldest building on campus, listed on National Historic Registry)
- 5** Carson Cottage (1923, addition 1939, remodelled 1989)
Office of Communications, Continuing Education
- 6** Coffman Chapel (1955)
Music studio, classrooms, Department of Religion and Philosophy, Chaplain
- 7** Garbhill Gymnasium (1949)
Gymnasium, indoor pool, classrooms, Department of Physical Education, Recreation and Leisure Studies
- 8** Graduate Office (remodelled 1988)
- 9** Hodson Science Center (1957, link added 1979, renovated 1985)
Science laboratories, classrooms, Departments of Biology, and Chemistry, Physics and Astronomy
- 10** Marx Center (1983)
Discal Commons, home economics residential laboratory, classroom
- 11** Orkla Hall CHAD
Development Laboratory (1921, remodelled 1985)
- 12** Rosenstock Hall (1970)
Research Auditorium, Academic Computing Center, classrooms, psychology laboratories, Departments of Economics and Management, English, History and Political Science, Mathematics and Computer Science, Psychology, and Sociology and Social Work

Residence Halls

- 13** Strawn Cottage (1918, remodelled 1978)
Admissions, Financial Aid
- 14** Tarcen Arts Center (1966)
Avolon Speech Studio, Bookstore, Hodson Gallery, Pkocme, Edison Computer Auditorium, Price
- 15** Williams Observatory (1924, remodelled 1985)
Observatory, art studios, classrooms and language laboratory, Departments of Art, Education, and Foreign Languages and Literatures
- 16** Coblenz Hall (1922) (1865)
Coblenz Memorial Hall
- 17** Coblenz Memorial Hall (1865)
- 18** German House (remodelled 1976)
Residence for German language students
- 19** Martz Hall (1925, remodelled 1984)
Residence for French language students, conference facility when College is not in session
- 20** Meyran Hall (1930)
- 21** Shirer Hall (1915)
- 22** Smith Hall (1957)
- 23** Spanish House
Residence for Spanish language students

Student Life

- 24** Dining Facilities
Dining Hall (remodelled 1989)
Campus Club/Stack Bar
- 25** Health Center (remodelled 1984)
- 26** Huntsinger Aquatic Center (1975)
- 27** Parcourse (1984)
18-kilometer one mile exercise track
- 28** Rayford Lodge
Computer students lounge, study rooms
- 29** Tennis Courts
- 30** Thomas Athletic Field
Archery range, lacrosse field, soccer/hockey field, softball diamond, volleyball courts

**Other College
Facilities**

- 31** College House
Crafts laboratory, sports equipment
- 32** Hodson Outdoor Theater (1988)
- 33** Pergola
Center of the campus
- 34** President's House (1961)
- 35** Joseph Pastore Facilities Center (1947, renovated and addition 1988)
Shop, Physical Plant, Housekeeping
- 36** Thomas Gateway
Main entrance
- 37** College House
P Parking