

**THE
STERN
ESTATE**

Vol. 1, No. 24

Feb 28 - March 13

15¢

NOLA EXPRESS

&

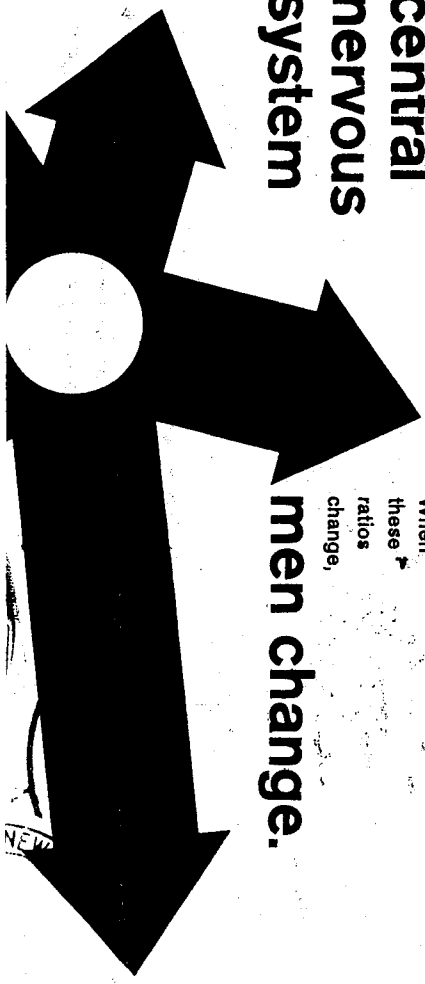
THE FOURTH ESTATE

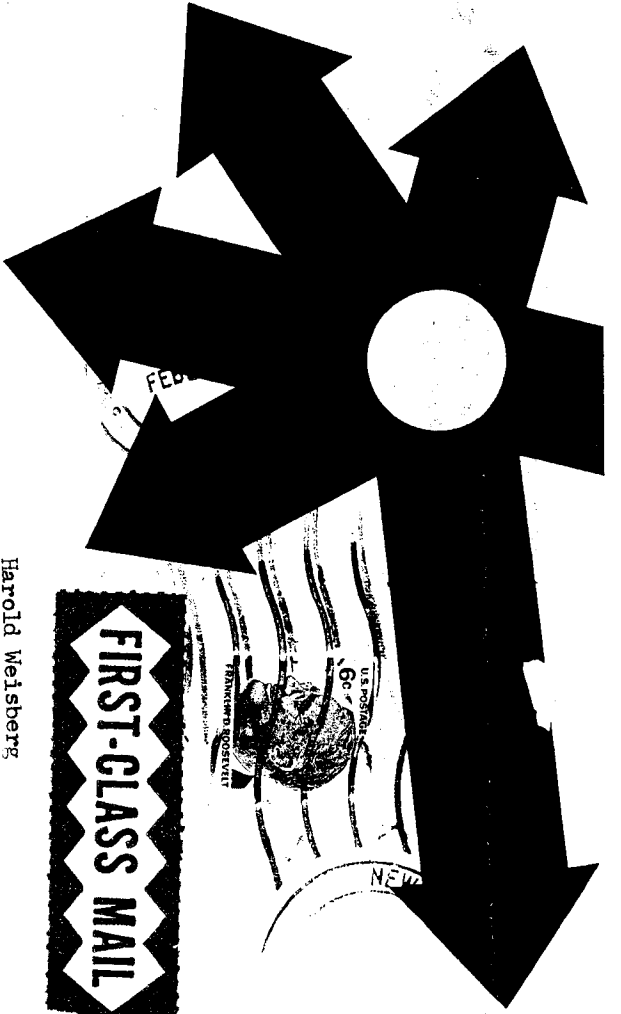
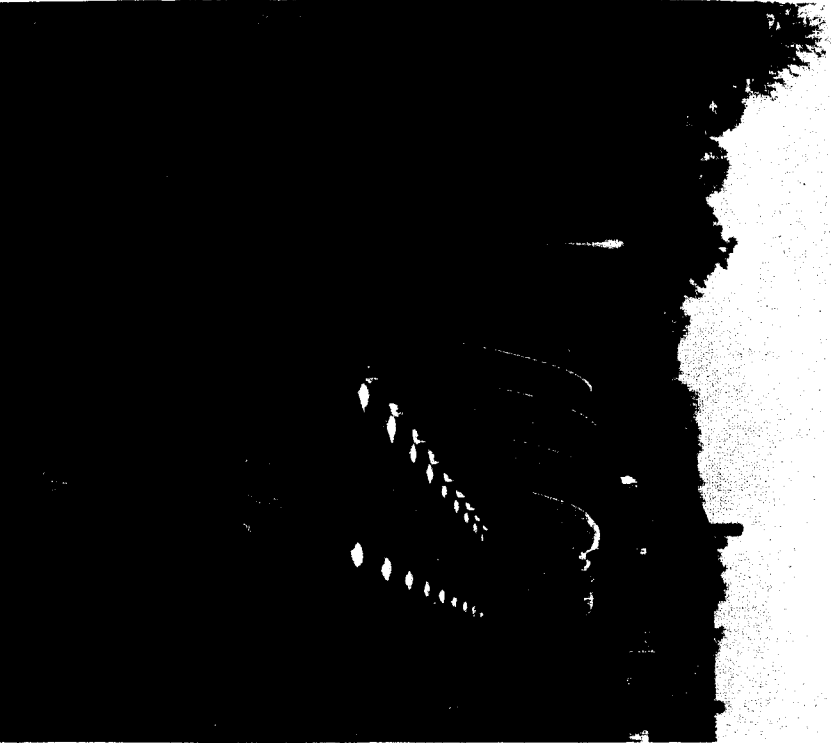
electric circuitry,

**an extension of
the
central
nervous
system**

Media, by altering the environment, evoke in us unique ratios of sense perceptions. The extension of any one sense alters the way we think and act—the way we perceive the world.

When these ratios change, men change.





in this issue

Harold Weisberg
Rt 8
Frederick Md 21701

SAMPLE

**Who owns radio & TV
in New Orleans p.2
La. State Police
Radio System p.3
Joint Legislative Committee
Un-American Activities**



SNIFFING OUT SUBVERSION

The Air is not yours-

If belongs to The Rich and The Super-Rich

In 1914 life on Direction Island was peaceful. The war in Europe was on but it did not effect Direction Island except for the fact that the island was a relay station on a cable from Europe to Australia.

On Nov 9, 1914 men from the German cruiser, EMDEN, tried to cut the cables linking Britain to Australia. Before they could do so, the Australian cruiser, SYDNEY, interrupted. The Germans were trying to emulate the British. Within 3 days of her entry into the war, Britain had cut all 5 of Germany's cables to the outside world. By 1939 the Germans, learning the lesson, had begun to build the world's most ambitious broadcasting system. Outside Berlin, Dr Goebbels erected a battery of short wave transmitters that broadcast daily entertainment and news and argument in fourteen languages. (from Freedom of Information, by Herman Bucker)

The lesson is the importance of communications. Information that we do not get does not exist. The means by which we get information is the media. The media identify and define our environment. Those who control the media control our view of the world. Their world is our world.

communication now is on the TV screen, and this is I think controlled, and I believe you can't say a country has freedom of speech if their main medium of speech is not free." ("The Air Belongs to the People," Pete Seeger Interview, The Spectator, Feb. 18, 1969)

WDSU-AM and WDSU-FM and WDSU-TV - NBC Affiliate.

WDSU was the first TV station in La. The radio station had been in being since at least 1929. It was possible for WDSU to expand into TV thru the influx of Stern family capital. The Sterns bought WDSU in 1948 and still own it thru the Royal Street Corp.

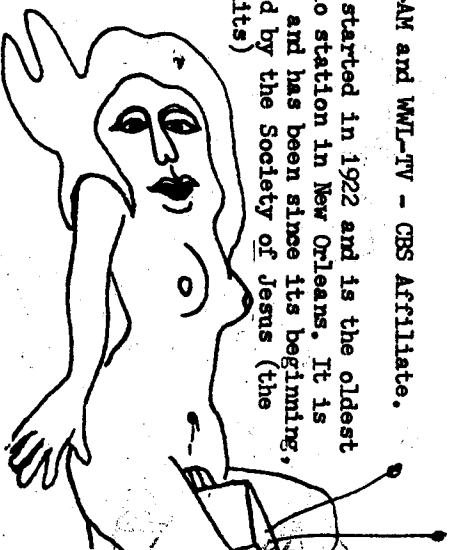
Stern money comes primarily from Sears & Roebuck. Edgar Stern Jr's mother, Edith, was a Rosenwald.

Stephen Birmingham in Our Crowd tells the story of Julius Rosenwald who went to Chicago at a tender age and bought a mail order house, Sears & Roebuck.

has no right to intrude into the private affairs of American citizens. He was fired.

WML-AM and WML-TV - CBS Affiliate.

WML started in 1922 and is the oldest radio station in New Orleans. It is now, and has been since its beginning, owned by the Society of Jesus (the Jesuits)



thru Loyola University. In 1955 the Jesuits were in competition with the Times-Picayune Publishing Corp, owner of WTPS radio, and James A Noe & Co, owner of New Orleans WNOE radio and KNOE radio and KNOE TV in Monroe, La, for Channel 4 TV. Each of the applicants submitted a brief to

The lesson is the importance of communications. Information that we do not get does not exist. The means by which we get information is the media. The media identify and define our environment. Those who control the media control our view of the world. Their world is our world.

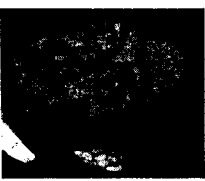
The men who control the media in New Orleans are not a typical cross section of the people. They are the corporate rich. As you will see of those who actually live in New Orleans, they do not limit their control to the media. They are in all sectors of the environment.

If we want to change the world we must take control away from those who are now defining our environment; that is, we must make another environment possible. We must get to the media.

"I feel very strongly that the fight for freedom of speech in America during the next decade is going to be to free the screen and free the air -- in many ways we enjoy more freedom of speech than most of the world but this very freedom of speech that we have is possible because the air is so unfree. Let me explain. It's a little bit like the Army where the officers will tell the enlisted men "you can bitch all you want, you can sit around and gripe, for as long as you are in the barracks, but once you leave the barracks and line up and answer roll call, then you keep your lip buttoned." And it's a little bit that way, we are told you can say anything you want almost, as long as it's on print and we can afford to pay the printer, which isn't completely true, but darn near true. This is possible only because the big medium of

Stern money comes primarily from Sears & Roebuck. Edgar Stern Jr.'s mother, Edith, was a Rosewald.

Stephen Birmingham in Our Crowd tells the story of Julius Rosewald who went to Chicago at a tender age and bought a mail order house, Sears & Roebuck. When Julius Rosewald needed money to expand he went to see his cousin, Henry Goldman, of Goldman, Sachs & Co (New York investment banking). He asked for 5 million dollars and it was suggested that he make a public offering of Sears stock - and make 10 million dollars? He did. Edgar B Stern Jr, an heir, now owns approx 339,623 shares worth \$20,396,249.



In their TV history the Sterns have had little trouble with the Federal Communications Commission (FCC). In 1951 the FCC renewed WDSU's license with a warning that they cannot censor the content of political speeches. In the 1949-50 campaign, Alvin A Cobb was refused time by WDSU. Cobb, a candidate for mayor, was considered a firm segregationist and the Sterns are commonly known as liberals. But, lest we think the Sterns stray too far to the "left," in 1956 Herman Liveright, program director for WDSU was subpoenaed by the Congressional Subcommittee on Internal Security. Liveright was immediately "relieved of his duties." Jerk Senator James Eastland presided at the hearing. Liveright did not take the 5th amendment but refused to answer on the grounds that Congress

thru Loyola University. In 1955 the Jesuits were in competition with the Times-Picayune Publishing Corp, owner of WTPS radio, and James A Noe & Co, owner of New Orleans WNOE radio and KNOE radio and KNOE TV in Monroe, La, for Channel 4 TV. Each of the applicants submitted a brief to the FCC. The FCC examiner, Elizabeth C Smith, proposed that the FCC reject Loyola and Noe. She said that Noe & Co should be rejected because the company lacked proof "that it has available funds necessary to construct and operate its proposed TV station."

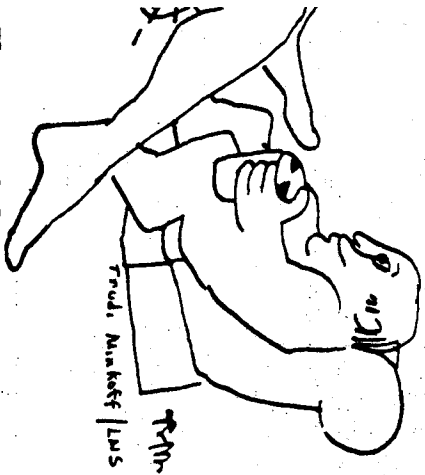
In her opinion on Loyola the examiner said, "Loyola has a distinct and definite relationship" with other radio stations elsewhere in the country licensed to corporations controlled by the Society of Jesus. She said WML was "one of the most important and powerful AM radio facilities in the nation."



Joan Lesher
Loyola
Advisory
Committee

The examiner recommended that the station be granted to the Times-Picayune Publishing Corporation. In '56 the FCC reversed the examiner and granted the channel to WML. WML-TV has been operating since '57. In January '58 the Times-Picayune Publishing Corp asked the U S Court of Appeals in Washington DC to reverse the FCC grant of Channel 4 to Loyola. They did not. In Oct 58 the Times-Picayune bought the New Orleans Item

(owned by David (Tommy) Stern) and merged the States and the Item. Then they sold their radio station WTPS which they had made a "commitment" to the U S Dept of Justice to sell when the merger took place. The dates are interesting because it would seem that the Times-Picayune decided to sell WTPS after it could not get a TV license. Times-Picayune stockholders apparently preferred to control only two-thirds of the newspapers and part of the radio and TV in New Orleans rather than all the newspapers (assuming the Justice Dept would not let them have a newspaper monopoly as well as a TV station). They settled for the newspaper monopoly and gave up the radio station when they couldn't get the TV channel. Four years later the major Times-Picayune stockholders were the heirs of Leonard K Nicholson: Jerry Nicholson, Mrs Yorke P Nicholson, Mrs



Eleanor Nicholson Corbin and Mrs Elisabeth Nicholson Fischer. In 1962 they sold out to Sam Newhouse.

WVUE-TV - ABC Affiliate.

Appears the attorney's name Charles H. & the

LA. STATE POLICE RADIO SYSTEM

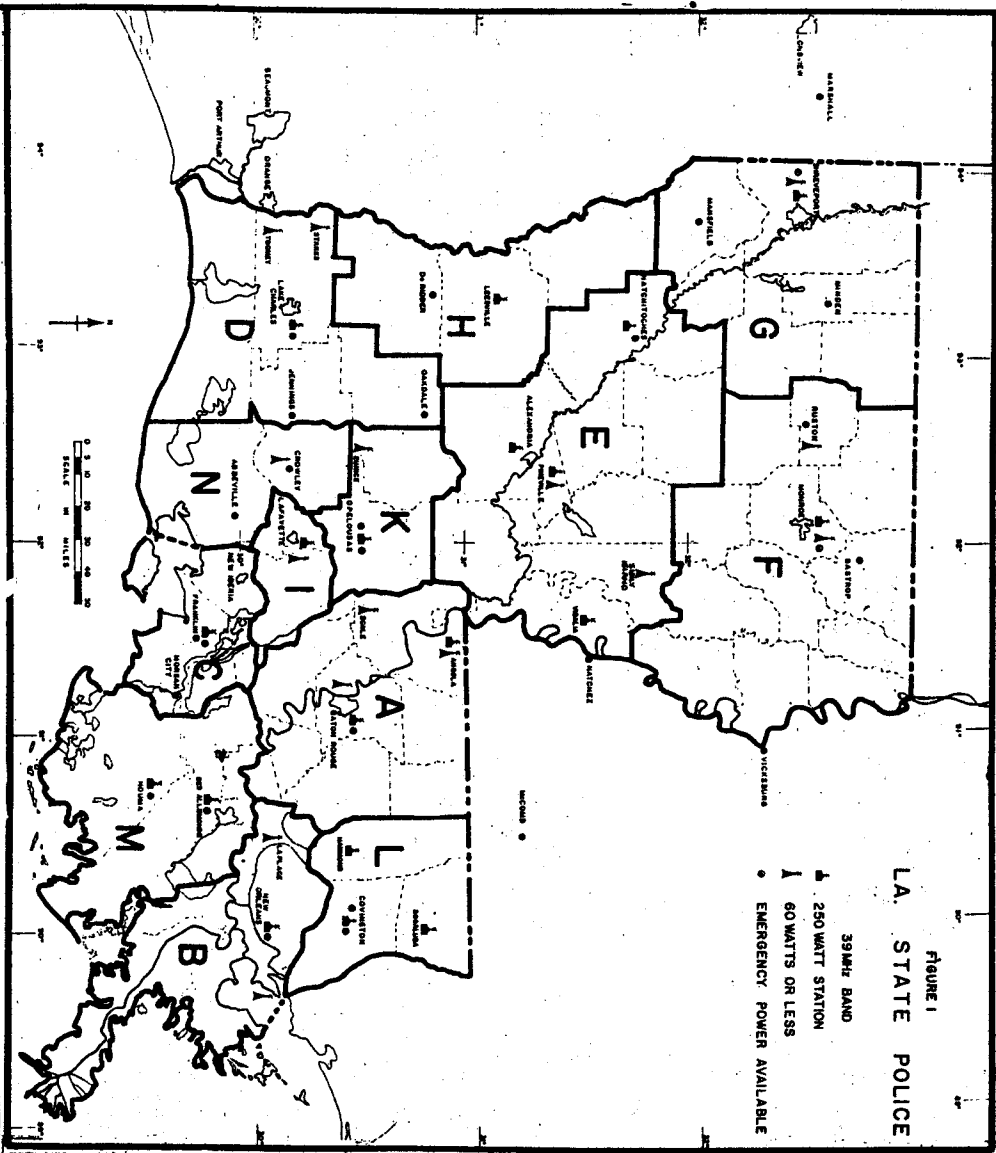


Figure 1
LA. STATE POLICE

Present System

The communication system of the Division of State Police is currently maintained on a 24-hour basis, with communication facilities in each troop office and substation. The central communications center is located at

Eleanor Nicholson Corbin and Mrs. Elizabeth Nicholson Fischer. In 1962 they sold out to Sam Newhouse.

WVUE-TV - ABC Affiliate.

After the struggle for Channel 4 the FCC apparently decided to allot another VHF channel to New Orleans.

In '58 Chester F Ornes, President of Supreme Broadcasting Co, owner of WJRM radio, applied for and got TV Channel 12. In '59 Coastal TV and Supreme Broadcasting merged, forming New Orleans TV Corp. Joseph A Parretti was President; Chester F Ornes, V-P; and Chailin O Perez (son of Judge Leander H Perez), Secretary-Treasurer.

In 1962, the latest date we have information for, Supreme sold its 40% interest in New Orleans TV Corp (the other major stockholder was Coastal TV) to WSTV Inc of Steubenville, Ohio, a subsidiary of Rust Craft Greeting Card Co, operator of 5 TV stations and 7 radio stations in various states. Supreme still (as of '62) had interest in WJMR and WROM-FM and radio and TV in Puerto Rico.

WNOM-AM and WNOM-FM and WRCM-TV

The Supreme Broadcasting Co was granted a TV permit in '53 for WJMR-TV. In '51 WJMR and WRCM radio were sold to Chester F Ornes (Supreme) for \$53,000. Its history between '53 and '63 is a blank. In '63 Magnetwood Broadcasting Co bought WNOM-TV, which is now Channel 26. WJMR-TV no longer exists.

Continued on page 6

Present System

The communication system of the Division of State Police is currently maintained on a 24-hour basis, with communication facilities in each troop office and substation. The central communications center is located at the Louisiana State Police Headquarters in Baton Rouge. Facilities of the central communications center consist of a radio network operating on the frequencies indicated in Table 3. Three automatic tape-operated teletype

TABLE 3

LOUISIANA STATE POLICE RADIO FREQUENCIES

Frequency MHz	Channel Application
39.30	Emergency Channel
39.50	Normal Mobile Channel
44.70	Troop-to-Troop (Point-to-Point) Channel

units, one toll teletype, a national civil defense warning system (NADS) and telephone circuits, one of which is a hot line to the Baton Rouge Police Department, are in operation. Many of the sheriffs and other users of 39.50 MHz have subsequently been assigned alternate frequencies (Table 4) to reduce congestion on 39.50 MHz.

One of the teletype machines provides communication between each of Louisiana's 13 state police troop headquarters. Another, the Gulf Coast Network, connects with 14 stations in Texas. The third is the newly created (1965) Southeastern Law Enforcement Teletypewriter Network which provides rapid, written communications between Alabama, Florida, Georgia, Kentucky, Louisiana, Mississippi, South Carolina, Tennessee, and Arkansas. In addition, the teletype network connects the Eastern States with a relay point at Columbia, South Carolina and with automatic relays at

Pikeville, Maryland and Hartford, Connecticut providing direct communications with all of the northeastern states. Kentucky relays traffic via CW to the north, central, and western states not on the teletype network, and can establish instant contact with every state in the nation with the exception of Wyoming, Alaska, and Hawaii.

The Central Communications Center serves as a relay point between the Gulf Coast Teletypewriter Network and the Southeastern Law Enforcement Teletypewriter Network, as well as to all points in Louisiana. The Central Communications Center maintains a 24-hour alert as a State Civil Defense warning center, rebroadcasts all messages received from National Civil Defense headquarters to state and local agencies, and notifies Civil Defense of emergencies within the state where Civil Defense aid may be needed.

A mobile communications disaster control unit is part of the communication system. A van was purchased in 1942 and equipped with office furniture, radio consoles (including Arkansas and Mississippi frequencies), a teletype unit connecting with Baton Rouge headquarters as well as with every troop office in the state, telephone outlets, first aid equipment, supplies, and a disaster victim identification kit. The van is equipped with its own power unit, enabling it to operate in areas where no power is available.

- Headquarters, Baton Rouge, La. - Central Communications Center
- 1 - 250-ft. self-standing tower.
 - 1 - 250-watt base station - transmits on 39.50 MHz, receives on 39.50 and 39.30 MHz.
 - 1 - 250-watt base station - transmits and receives on 44.70 MHz.
 - 1 - Receiver on 42.02 MHz - Mississippi Highway Safety Patrol, Brookhaven, Miss.
 - 3 - Control positions.
- Emergency power, 10 KW, automatic start/stop.
- Troop B, New Orleans, La.

- 1 - 250-ft. self-supporting tower.
- 1 - 250-watt transmitter/receiver on 39.50 MHz, plus receiver on 39.30 MHz.
- 1 - 250-watt transmitter/receiver on 44.70 MHz.

TABLE 5

STATE POLICE RADIO EQUIPMENT (1966)

LOUISIANA STATE POLICE RADIO SYSTEMS reprinted from

SURVEY OF COMMUNICATIONS SYSTEMS IN SELECTED SECTORS OF LOUISIANA ECONOMY, published by Gulf South Research Inst.

In Table 5 only the Central Communications Center and the New Orleans systems were reprinted.

Table 4 of alternate frequencies there wasn't room to reprint. Frequency MHz 39.06 is reserved for police surveillance and bugging activities.

This study was done for the Louisiana State Science Foundation.

For the Record

NEW ORLEANS

X-UNDERCOVER

POLICE



DROKHAVEN, MISS.
 3 - Control positions.
 Emergency power, 10 KW, automatic start/stop.
 Troop B, New Orleans, La.

- 1 - 250-ft. self-supporting tower.
 - 1 - 250-watt transmitter/receiver on 39.50 MHz, plus receiver on 39.30 MHz.
 - 1 - 250-watt transmitter/receiver on 44.70 MHz.
 - 2 - Control positions.
 - 1 - Mississippi Highway Safety Patrol receiver 42.02 for Gulfport, Miss.
- Emergency power, 10 KW, automatic start/stop.

TABLE 5

LOUISIANA STATE POLICE RADIO

In addition to the radio facilities listed, the Central Communications Center is connected to the nation-wide Law Enforcement Teletype System (LETS) network, and serves as the control station for eight southeastern

LETS states: Louisiana, Arkansas, Mississippi, Alabama, Georgia, Tennessee, Florida, and Kentucky. This network links the Louisiana State Police with police authorities across the country via a unified communications system, with message sending time reduced to minutes. The LETS network provides all-station broadcast of urgent messages, secrecy in transmission, 24-hour operation, and selective station calling.

The state police communication center in Baton Rouge is also connected to the New Orleans terminal (1 of 15 in the country) of the National Crime Information Center and Federal Computer Information Center.

As of March 1967 the Louisiana State Police department personnel number some 692 commissioned officers and 197 civilian employees. There are 28 radio dispatchers--seven in the communications center and three per troop at seven headquarter stations. Three radio maintenance men service the 350 mobile radio units in the system. The Louisiana State Police operate a two-way radio communications system consisting of thirty-one 250-watt base radio stations and several other base stations of lesser power ratings. The equipment in use and the geographic location of each is listed in Table 5. The map in Figure 1 shows the geographic layout of the system. This equipment represents an investment with a current book value (in mid-1967) of over \$560,000.

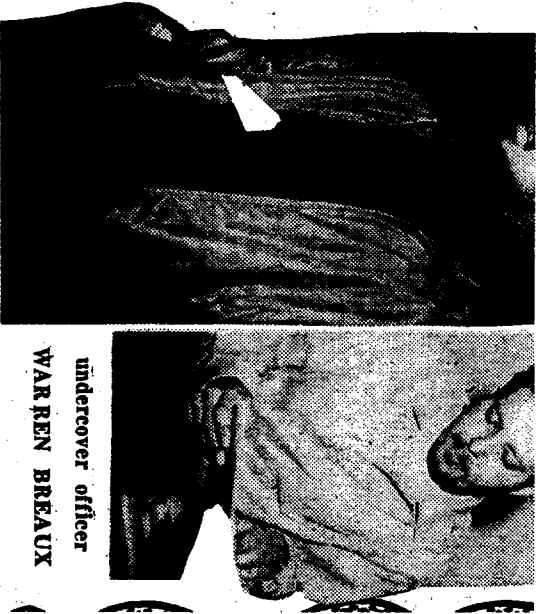


Photo by The Times-Picayune. Pvt. Albert Green of the New Orleans Police Department, whose undercover work was instrumental in making many of the arrests.

undercover officer
WARREN BREAUX

NOIA Express Index: Issues 1 - 16, \$5.
 Purchasers must identify themselves.
 We reserve the right to refuse service.

STARK'S REALTIES
 623 BOURBON ST
 BOURBON ST

Social Register of

New Orleans

THE BEGINNING OF WISDOM

by G. William Domhoff

(Note. G. William Domhoff is the author of Who Rules America? (Prentice-Hall, 1967))

The U.S.A. as we all know is a very big and complex place. Hundreds of millions of people, all races, creeds, and colors. We only have to spend a couple of days touring around any major city to know that. Anyhow, the whole thing is very confusing -- it's hard to sort everybody out, to know what they're thinking, to know where they're at politically and psychologically.

Of one thing we can be sure, though, there is a top to this heap of humanity, and on that top sit some of the fattest cats who ever walked the face of this earth. These fat cats are the corporate rich, the owners and managers of the major banks and corporations of this country. They and their descendants make up the American upper class, a social class of a million or so people who own 25-30% of all the wealth in this country.

The American upper class and its power elite are national in their scope. They attend the same schools, belong to the same clubs, meet as trustees of foundations, universities, and museums, hash out economic differences as interlocking corporation directors, hash out political differences as members of various policy-planning organizations, and give the mid Thursday night off so they can eat out at the club or go to the opera. However, although national in scope, it is also true that there are regional and local nuances. That is, there are "branches" of the upper class.

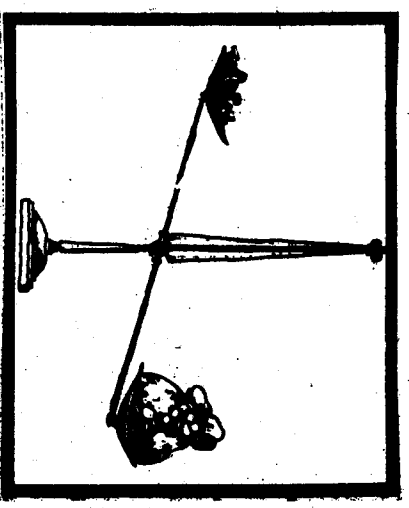
New Orleans is of course no exception. It too has a branch of the upper class based upon corporate wealth. It too has its exclusive private schools, its gentlemen's clubs, and lo and behold, even its Social Register, its "blue book" so that we can know who is who among the pedigreed. And thanks to the NOIA Express, we have done a little study that gives us the tools with which to make further studies of the New Orleans Branch.



The Boston Club

Our study started with an old membership list from the Boston Club, which is generally known to be a top dog club in New Orleans town. We then checked out the boys who belong. We found a whole lot of them in Who's Who in America (1965), and we found that they are into everything economically worth getting into in NOIA.

Two other tidbits on that register. We looked at all the 1967-68 New Orleans debts, and found that 42 of 51 were listed. We also studied a "social history" of New Orleans, The Romantic New Orleansians by Robert Fallant, and we found that almost all of the "old" rich of NOIA have descendants still hanging around the Social Register.



What good is all this jazz? It helps you to locate the enemy and their hangouts. It's an anchor point from which you can teach people that there is a ruling class in this country, a social upper class that has an incredible percentage of the corporate wealth, the key corporate positions, and a million different ways to bugger the political process. It is the beginning of wisdom for understanding corporate America.

I say the beginning of wisdom because the real trick is to create a viable alternative vision for a post-corporate America and to develop a believable method for taking power from the rich.

face of this earth. These fat cats are the corporate rich, the owners and managers of the major banks and corporations of this country. They and their descendants make up the American upper class, a social class of a million or so people who own 25-30% of all the wealth in this country, and 75 - 80% of all corporate wealth. One might infer from this incredibly-lopsided wealth distribution that these Super Rich run the country, and he would be right. But to please the liberals and the political scientists he must be more specific -- he must tell them how the Big Rich run the show. He should then answer that not all the members of the upper class are involved in ruling; some don't know up from down -- they just clip their coupons and act out whatever whim happens to rise out of the Unconscious.

However, other members of the upper class do know what the hell is coming off, and in conjunction with trusted hired hands, they manage general affairs for the rest of the class. A great name for these show-runners is "power elite," which means operating arm of the upper class. Made up of active members of the upper class and high-level employees in institutions controlled by members of the upper class, its function is to maintain this socioeconomic system (corporation feudalism) which so enormously rewards the fat cats at the top while the white collar propertyless dream of professional success and the blue collar propertyless struggle to hang on to what they've been able to eke out during periods of war-induced prosperity.

OUR SWAY SURVEY WITH AN OLD MEMBERSHIP list from the Boston Club, which is generally known to be a top dog club in New Orleans town. We then checked out the boys who belong. We found a whole lot of them in Who's Who in America (196), and we found that they are into everything economically worth getting into in NOIA.



Then we checked Boston Club members out in the local Social Register, and the overlap was pretty nice indeed, 54%. We then tried to find into on people in the Register, which yielded more Big Fish. However, let me emphasize that no indicator is perfect. Probably not everyone in that book is a big millionaire, and there are probably some big rich who are part of the social circuit who are not listed. No "indicator" is perfect, but the New Orleans Social Register is probably as good as they come for the upper class.

political process. It is the beginning of wisdom for understanding corporate America.

I say the beginning of wisdom because the real trick is to create a viable alternative vision for a post-corporate America and to develop a believable method for taking power from the Big Rich so that the millions of people who already know the score can overcome their cynicism and despair, and begin to think once again about serious social change. However, with those people back in action, an analysis of corporaten feudalism and its upper class becomes one of the most important weapons in talking to the undisciplined. If New Orleans has anything in common with other major cities, as I'm sure it does, then its Social Register will lead you to every important foundation, policy-planning group and upper-class front in NOIA. Onward and upward with the Social Register.



Signed articles are the responsibility of the writers. Unsigned articles are the responsibility of the editors. Robert Head and Darlene Pfe.

The
**Joint Legislative Committee on
 Un-American Activities**

STATE OF LOUISIANA



Hon. John J. McKeithen
 GOVERNOR

STUDENTS FOR A DEMOCRATIC SOCIETY
 AND
 THE NEW LEFT:
 THEIR DANGER TO THE EDUCATIONAL
 INSTITUTIONS OF THE STATE
 OF LOUISIANA.

Respectfully submitted:

Jesse M. Knowles, Chairman

- Senator Jesse M. Knowles, Chairman, Calcasieu, Cameron, Jefferson Davis
- Representative Ford E. Stinson, Vice Chairman, Bossier
- Senator Bryan A. Poston, Beauregard, DeSoto, Sabine, Vernon
- Senator Charles M. Brown, Franklin, Madison, Richland, Tensas
- Senator L. W. Eaton, Jr., East Baton Rouge, East Feliciana
- Senator Claude B. Duval, Assumption, Lafourche, St. Mary, Terrebonne
- Representative John J. Hainkel, Jr., Orleans
- Representative Ralph W. Graham, Grant, Rapides



State Representative
 John J. Hainkel, Jr.,
 of Orleans Parish (Wards
 14 & 16).

State Representative John J Hainkel Jr of Orleans Parish (Wards 14 & 16) is another member of IIMC. Who Hainkel represents will reveal itself. During the last election he was chairman of Democrats for Treen. Treen is a Republican. Treen and Hainkel's law associate, Perrin C Butler, are directors of INCA. INCA is a difficult organization to describe. To say that it propagates right-wing ideology begs the question. If you've ever heard INCA spokesman Ed Butler speak you know what we're talking about. One would think that INCA director Darwin Fenner who sits on the boards of such seemingly sophisticated organizations as Merrill Lynch Pierce Fenner & Smith and Tulane University would not allow such irrationality in public.

Be as be may, it is Tulane University

WHO OWNS RADIO & TV IN NEW ORLEANS
 (contd from page 3)

When they sold it and who they sold it to are unknown. Supreme again went into the TV business with WVEE in 1958. They are now apparently out of the business after selling WVEE in '62. The UHF channel in New Orleans is now WWOM-TV.

The stockholders of Wagenwood Broadcasting Co are David Wagenwood and Fred Westenberger. This year they sold their interests in WWOM-AM-FM to Entertainment Communications of La for \$780,000 (subject to FCC approval). Entertainment Communications of La is a subsidiary of Entertainment Communications of Philadelphia. Joseph M Field of Philadelphia owns 80.5% of Entertainment Communications. Investors in the company are a group of Philadelphia doctors. It's worth remarking that a group of doctors have the capital to finance Entertainment Communications not only in La but in Nevada, Texas, Missouri, Pennsylvania and Minnesota. WWOM-FM is the station commonly referred to, at such times as it is permitted on air, as "free radio." WTES-TV - National Educational Television.

National Educational Television is a network of 90 TV stations providing children's programs, cultural events and information programs. Local NET-affiliate TV stations pay \$100 per year for affiliation.

WTES in New Orleans started in 1957. Its trustees are a group of over 50 local businessmen.

The major financing for NET comes from the Ford Foundation. Last summer John F White, NET President, said in a New Orleans interview, that financing "is

Senator Bryan A. Poston, Beauregard, DeSoto, Sabine, Vernon
 Senator Charles M. Brown, Franklin, Madison, Richland, Texas
 Senator L. W. Eaton, Jr., East Baton Rouge, East Feliciana
 Senator Claude B. Duval, Assumption, Lafourche, St. Mary, Terre-
 bonne

Representative John J. Hainke, Jr., Orleans
 Representative Ralph W. Graham, Grant, Rapides
 Representative Carl V. Dawson, East Baton Rouge
 Representative S. S. DeWitt, Franklin, Madison, Texas

Frederick B. Alexander, Jr.
 Col. USA. (Ret.)
 Staff Director

They disappoint us. Their latest effort is about national SDS. It consists of quotes from the daily and weekly press. In regard to SDS in La they limit themselves to saying that on several university and college campuses in La there is a student organization known as "the Student Liberal Federation" and that there is an SDS chapter in a large university in New Orleans.

In their conclusions they refer to student dissidents who oppose "The System." The quote marks are theirs. We take them to mean that the Committee considers the term "The System" a misnomer. Perhaps we can help clarify it.



IAC Chairman, Senator Jesse M. Knowles, is a land management supervisor for the Pan American Petroleum Corp. This is The System.

on the "as of such seemingly sophisticated organizations as Merrill Lynch Pierce Fenner & Smith and Tulane University would not allow such irrationality in public.

Be as he may, it is Tulane University that IAC refers to in its latest report. Knowles said, "The only branch of SDS in Louisiana at the present time is located at Tulane in New Orleans." - Beaumont (Texas) Enterprise, February 21, 1969/
 Such is the system.

To complete the circle, Representative Hainke is a legal representative of Pan American Petroleum, the same profit-making organization that IAC Chairman Jesse Knowles represents. Pan American Petroleum is a wholly-owned subsidiary of Standard Oil. Enff said? This too is the system.

A final note. IAC has subpoena power. "The Attorney General shall prosecute any witness who is guilty of refusal to testify or who gives a false witness." The Attorney General is slyster Gremlillon. Imagine Gremlillon prosecuting somebody for false witness. It becomes clearer what The System is.



Its crusades are a group of over 20 local businessmen.

The major financing for NET comes from the Ford Foundation. Last summer John F. White, NET President, said in a New Orleans interview, that financing "is provided on a no strings attached basis." This is false. The Ford Foundation reserves the right to inspect every NET program produced with Ford Foundation money. Wm Dombhoff in Who Rules America? says of NET that it "may be described as one of the many lines of communication between liberal members of the upper class and the intelligentsia of the upper-middle class."



"When you consider television's awesome power to educate, aren't you thankful it doesn't?"

Drawing by Donald Reilly, © 1968 The New Yorker Magazine, Inc.

WNQE-AM - ABC Affiliate.

In 1936 James A. Noe took over an already existing station and changed its call letters to WNQE.

In 1926 the FCC fined WNQE \$10,000 for rigging contests. If you had the lucky number the station offered prizes ranging from \$1 to \$1060 but fined it

CRIME IN THE SUITES

by Jack Minnis

at no one could win more than Noe said he "was genuinely surprised when he became aware of the news for the FCC investigation." FCC commented on his statement regarding the station owners "should have had that controls /on the so-called contest/ were being exercised if only use the contest at WNOE and several station promotions were stated for only \$650/month."

has been at the game a long time.

is rejected application to the FCC TV Channel 4 he stated his net worth at \$1,800,000.

39 Noe was charged with "hot oil" libeling and with bribing personnel he La Dept of Conservation. He and our (Seize more) Weiss were indicted by a federal grand jury for ion of \$32,000 income and excess. Or-Lose oil corporation. Noe hit the charge and was acquitted on defense that he had "affixed his ature to the corporation's income statement without any understanding its contents, and hence was innocent my intent to defraud the govern-"

is still at it. He was one of the main directors of La Loan & Thrift.

AM - ABC affiliate Richards, "New Orleans Real Estate ator estimated by Fortune to be h \$50-100 million" was in 1925 nder of MSMB. The S in the call ars stands for Saenger and the MB aison Blanche.

There was a front-page story in the Times-Picayune. It said to the people: you are represented by thieves. There was a man. His name was Bremillion. He was the chief law enforcement officer of this state.

Then what did he do. He made himself rich at the cost of every taxpayer in Louisiana. What must we do? Must we take him at his "worth?" Or must we take him as what he is. A thief and a brigand.

He was the top law enforcement officer of Louisiana. He stole.

He did what the musclemen of the mafia say they do. But you see he did it with all the authority of the chief law enforcement officer of the state of Louisiana. Mafia is one thing. Law is another.

Now what have we here? If the Attorney General is guilty then he has done one thing. He has done what the musclemen and the loansharks of mother mafia have done.

Those who would benefit from the misfortunes of others are a kind of parasite we have not yet named.

There may be law and order in the streets but such will not be the case with the honorable Attorney General of the State of Louisiana.

"Some men rob you with a six gun and some with a fountain pen."

- Woodie Guthrie



ATTY. GEN. JACK P. F. BREMILLION

Has it ever occurred to you that you elected the Attorney General who found it expedient to enrich himself at your expense?

When you have learned that this sort of vermin will glut themselves with the power of the state then perhaps you will have learned that this vermin is neither a representative of you nor a representative of the State of Louisiana.

When his kind have been stricken from the rolls of Louisiana politics then

E V Richards, "New Orleans Real Estate operator estimated by Fortune to be worth \$50-100 million" was in 1925 co-founder of MSMB. The S in the call letters stands for Saenger and the MB for Maison Blanche.

MB

Richards, along with the Julius and A D Saenger founded Saenger Theaters Inc.

The station affiliated with NBC in 1929 and switched to ABC in '51 when WDSU affiliated with NBC. At that time Maison Blanche held 50% of MSMB stock. The stock was switched from Maison Blanche to City Stores Inc. Maison Blanche is a division of City Stores and Bankers Securities of Philadelphia owns 75% of City Stores.

Richards retired in 1950, following the sale of his interests in Paramount-Theaters, which he headed as president, to United Paramount Theaters.

United Paramount now owned 50% of MSMB stock in the name of Paramount-Gulf Theaters. In 1951 United Paramount bought ABC, at which time they switched control of Paramount-Gulf Theaters from United Paramount to American Broadcasting Paramount Theaters. Stock was still held under the name of Paramount Gulf.

What happened to the Saenger's between 1925 and 1950 is a mystery.

Richards continued till his death (in 1960) as a trustee of United Theaters which he organized in 1926

Continued on back page

parasite we have not yet named.

There may be law and order in the streets but such will not be the case with the honorable Attorney General of the State of Louisiana.

If and when law and order prevails in Louisiana it will be when there is an attorney general who insists that money can not and will not be stolen from the people of Louisiana.

you will have learned that this vermin is neither a representative of you nor a representative of the State of Louisiana. When his kind have been stricken from the rolls of Louisiana politics then we may have a decent state.

Until then your money will be stolen and it is you who will have invited the thiever.



**BOOKS
MAGAZINES**

WIDE SELECTION OF UNDERGROUND PUBLICATIONS IN TOWN.
Largest Selection of Under-ground Publications in town.
GREETING CARDS - STATIONERY - BUNDLES
FILMS & CIGARS

SIDNEY'S NEWS STAND

Open 7 Days 8 A.M. - 11 P.M.

901 DECATUR ST.
NEW ORLEANS, LA. 70116

523-9739

The Work Shop at
1109 ROYAL STREET
DOES Silver & Brass Smithery,
Copper Enameling, Leather Crafting,
rings, earrings, pins, clasps,
pendants, bags, wrist bands,
belts, sandals, chastity belts,
candles, boots, dog collars,
hair, religious symbols,
cat hooks, art, dirty pictures



THE BEST JOURNAL
ISM IN THE SOUTH TO-
DAY IS APPEARING IN
THE SMALL MOVEMENT
AND UNDERGROUND
PUBLICATIONS. THESE
NON-ESTABLISHMENT
PAPERS ARE SPRINGING
UP ALL OVER THE
SOUTH

SUBSCRIBE NOW AND
BE A PART OF THIS
NEW, RESURGENT MOVE-
MENT GATHERING
STRENGTH IN THE HEART
OF DIXIE.
FOR \$6.50 YOU WILL
RECEIVE 26 CURRENT
ISSUES, A DIFFERENT
PAPER EACH WEEK.

WRITE TO:
SOUTHERN SUBSCRIP-
TION DISTRIBUTING
SERVICE, BOX 2624
New Orleans, La. 70116

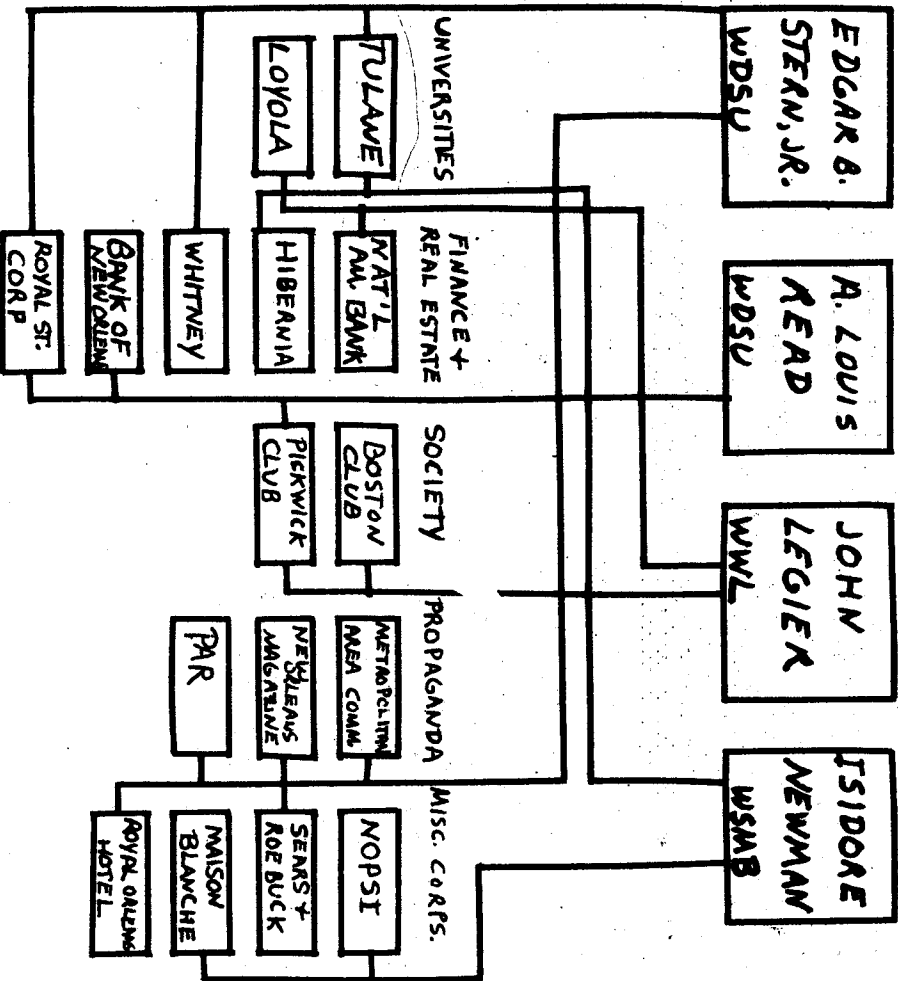
THE BARK

OPEN DECATUR

8/11/12 ST PHILIP

BIGGEST SHOW DANCING

NEW ORLEANS MEDIA EXECUTIVES - City Administrators



to operate neighborhood theaters in New Orleans.

Miss Henrietta Greedy Clay, Queen of Carnival this year, is Richards' granddaughter. Her mother is Mrs.

For a bigger and better study see U.S. MEDIA EMPIRE/LATIN AMERICA by Jon Frappier, NACLA Newsletter, P.O. Box 57, Cathedral Station, NY NY 10025. 50¢

GALLERIES

DELGADO MUSEUM OF ART: "Contemporary French Tapestries," Now thru March 9.
GALERIE SIMONNE STERN: Robert Gordy, Now thru March 15.

GLADE GALLERY: Jose Luis Cuevas, drawings and lithographs, 621 Toulouse. Now thru March 12.

BRYANT GALLERIES: Reginald Wilson and Carolyn Heberlin, paintings, 519 Royal.

MARC ANTONY GALLERY: Syd Solomon, paintings, 331 Chartres.

CIRCLE GALLERY: Charles Arthur Turner, paintings; Hannah Stewart, sculpture, 1072 St Charles.

TAHIR GALLERY: Auguste Renoir lithographs, 823 Chartres.

STUDIO 8: D Miller Wise, sculpture, 237 Broadway. Now thru March 9.

NEWCOMB ART SCHOOL: annual mid-year undergraduate student exhibition, Now thru March 6.

THEATRE

LA MISE EN SCENE: The Birthday Party by Harold Pinter, Feb 27 thru March 3, 8:30 pm, Sunday matinee 2 pm, 1500 Esplanade, 529-7600.

ISUNO: at Kennedy High School Auditorium, March 10, 8 pm, the French Dept presents Antigone by Jean Anouilh.

NEW ORLEANS REPERTORY THEATRE:

ROYAL ST.
CORP

to operate neighborhood theaters in New Orleans.

Miss Henrietta Creevy Clay, Queen of Carnival this year, is Richards' granddaughter. Her mother is Mrs. Elwood Roger Clay, nee Lula Ellenor Richards.

In 1957 Founders Corp bought the stock from Paramount and in Jan 69 MacMillan Ring Free Oil Co bought the WSMB stock from Founders. The other 50% is still owned by Bankers Securities of Phila. Bankers Securities operates controlled or wholly owned hotels and dept stores. It specializes in real estate and real estate securities. Its directors have connections with large Phila banks, utilities, and railroads. According to Perlo in the Empire of High Finance, these Phila interests are associated with the Morgan financial empire. Isidore Newman of New Orleans is a director of Bankers Securities.

WBOK-AM

WBOK went on the air in 1951. It was jointly owned by Jules J Paglin and Stanley W Ray both formerly associated with WJMR. At present there is an application to the FCC by Starr Broadcasting Group to buy WBOK. The stockholders of Starr Broadcasting are Peter H Starr, Wm F Buckley, Jr, and Gordon M Ryan.

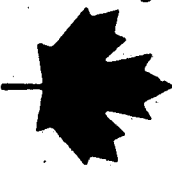
CINEMA

DELGADO MUSEUM CINEMA: "The Raven," Boris Karloff and Bela Lugosi, Feb 27 "Nosferatu" and "The Golem," directed by F W Murnau and Carl Dreyer, March 6.

For a bigger and better study see U.S. MEDIA EMPIRE/LATIN AMERICA by Jon Fraeppler, NACLA Newsletter, P.O. Box 57, Cathedral Station, NY NY 10025. 50¢

MAPLE STREET BOOK SHOP

7523 Maple St. • New Orleans, La.
Telephone: 866-4916



"Five Rooms of Paper Backs"

SUBSCRIBE

SUBSCRIBE

Please enter my subscription for: 12 issues-\$1.50 24 issues-\$3.00
I realize that the cost of producing NOLA EXPRESS will not be covered by its sale. I want to become a patron of NOLA EXPRESS and have added a \$ donation to my subscription.

Name _____
Address _____
City _____ State _____ Zip _____
NOIA EXPRESS, Box 2342, New Orleans La 70116

8:30 pm, Sunday matinee 2 pm.
1500 Esplanade. 529-7600.

LSUNO: at Kennedy High School Auditorium, March 10, 8 pm, the French Dept presents Antigone by Jean Anouilh

NEW ORLEANS REPERTORY THEATRE: An Enemy of the People by Henrik Ibsen Civic Theatre, 533 Baronne, Feb 28 thru March 29. In honor of Dr Joseph S Schwartz.

TULANE UNIVERSITY THEATRE: The Balcon by Jean Genet, March 5-9 and 12-16. The Arena. 8:30 pm.

Street Vendors

Pick Up

NOLA Express

at

the work shop

1109 ROYAL STREET

NOLA Express is published every other Thursday. Downtown street vendors pick up papers at the Work Shop, 1109 Royal St. Uptown street vendors pick up papers at Maple Street Book Shop, 7523 Maple St. Vendors get 10¢ a copy. It sells for 15¢ a copy.