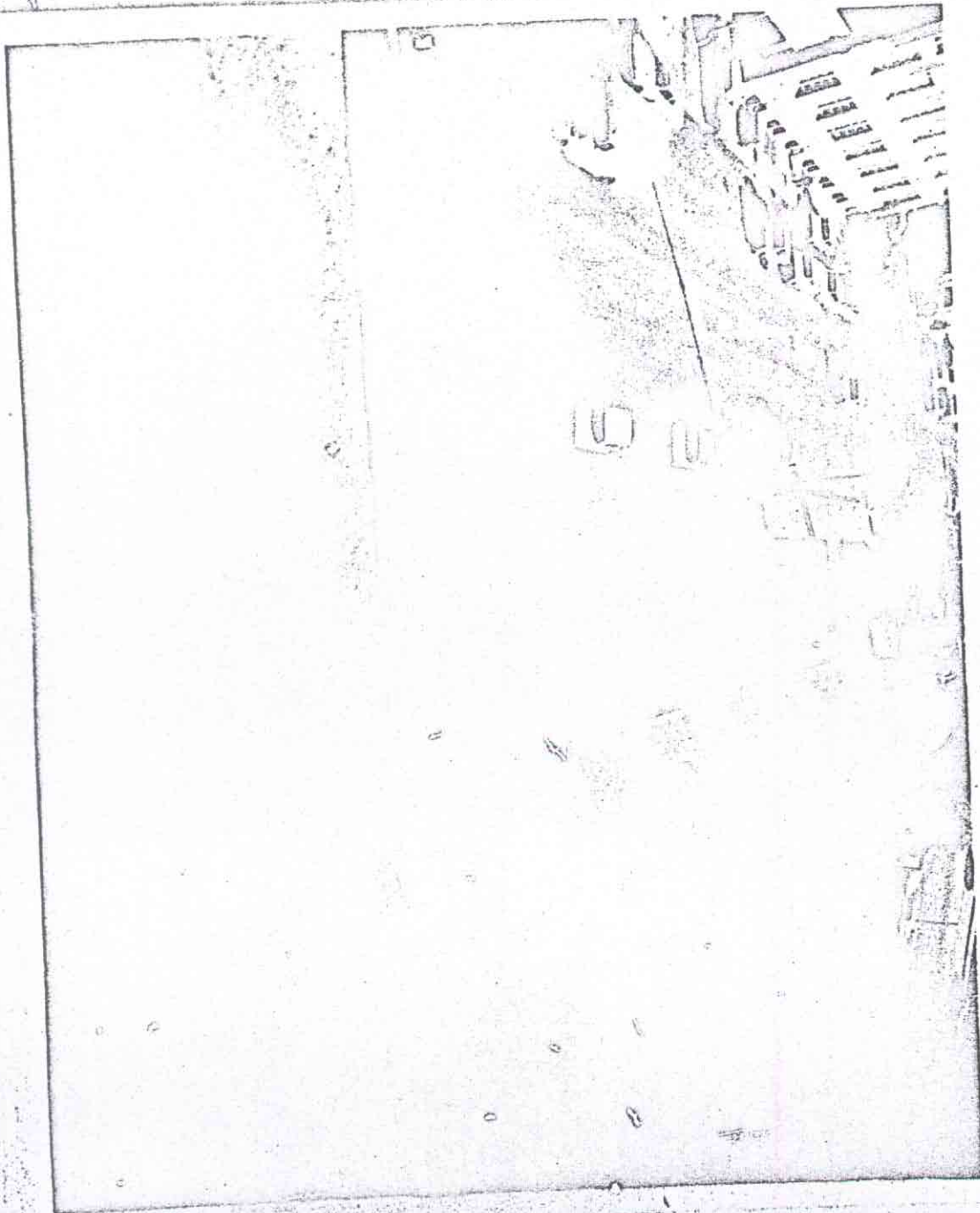
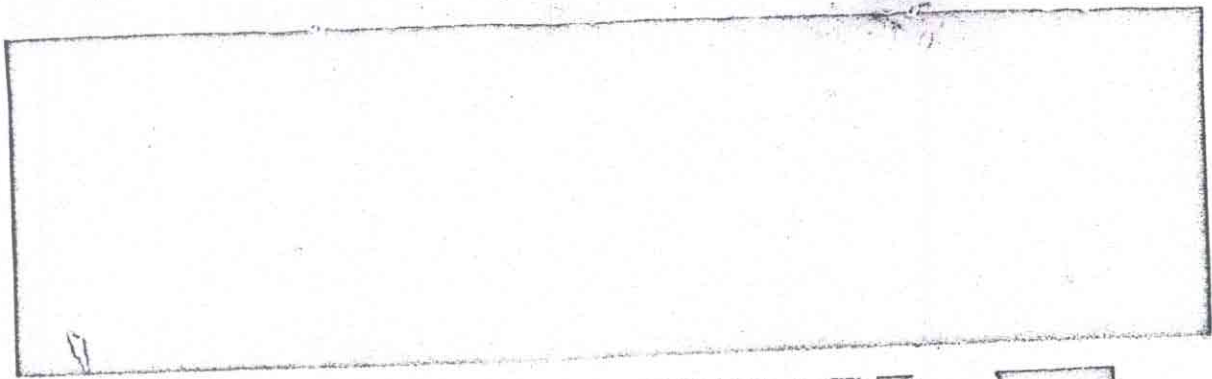


E
842
9
F47
vol. 17

PHOTOGRAPHS
EXTERIOR AND INTERIOR
OF
TEXAS DEPOSITORY BLDG.
RECONSTRUCTION

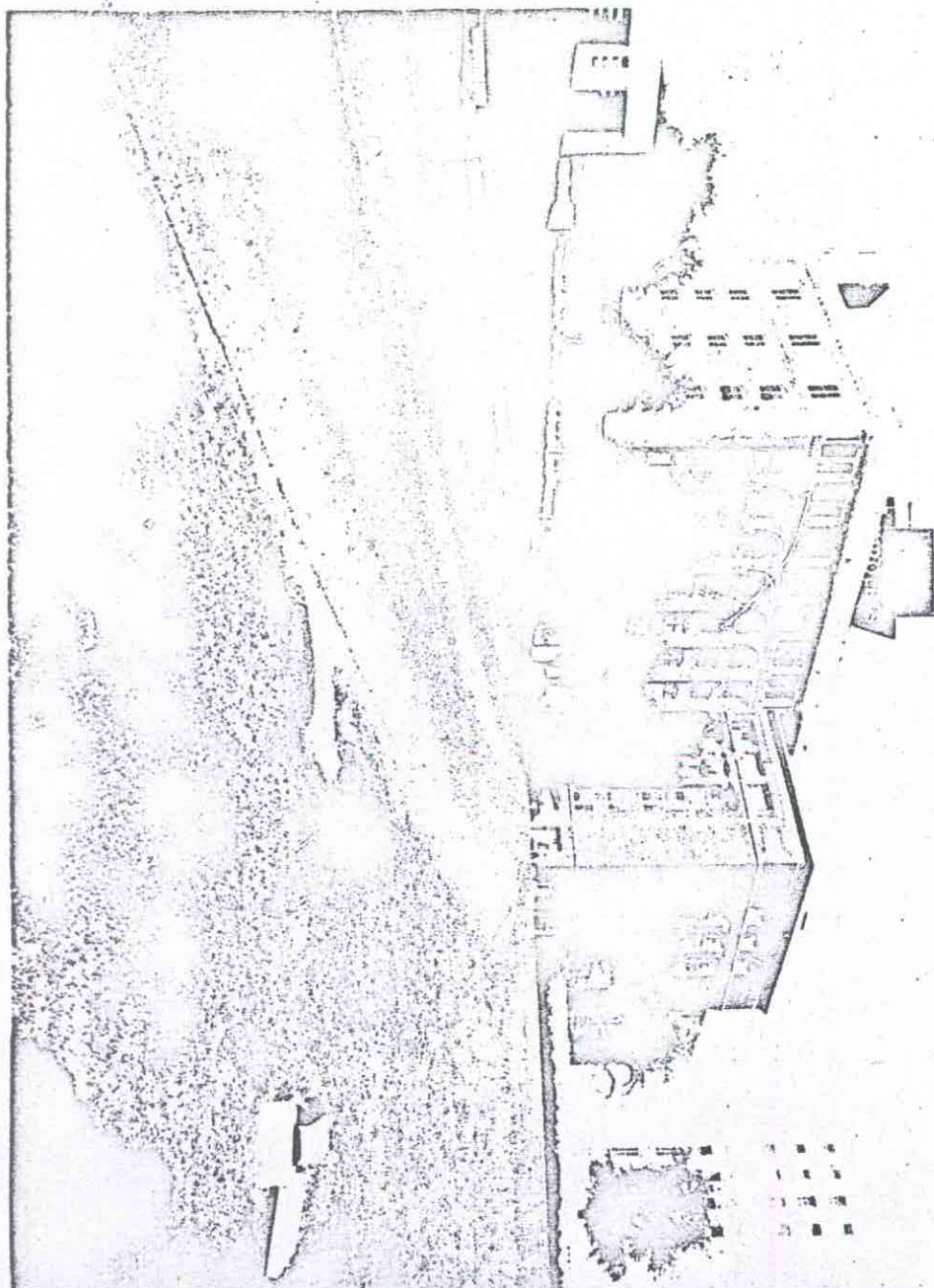


E812

17

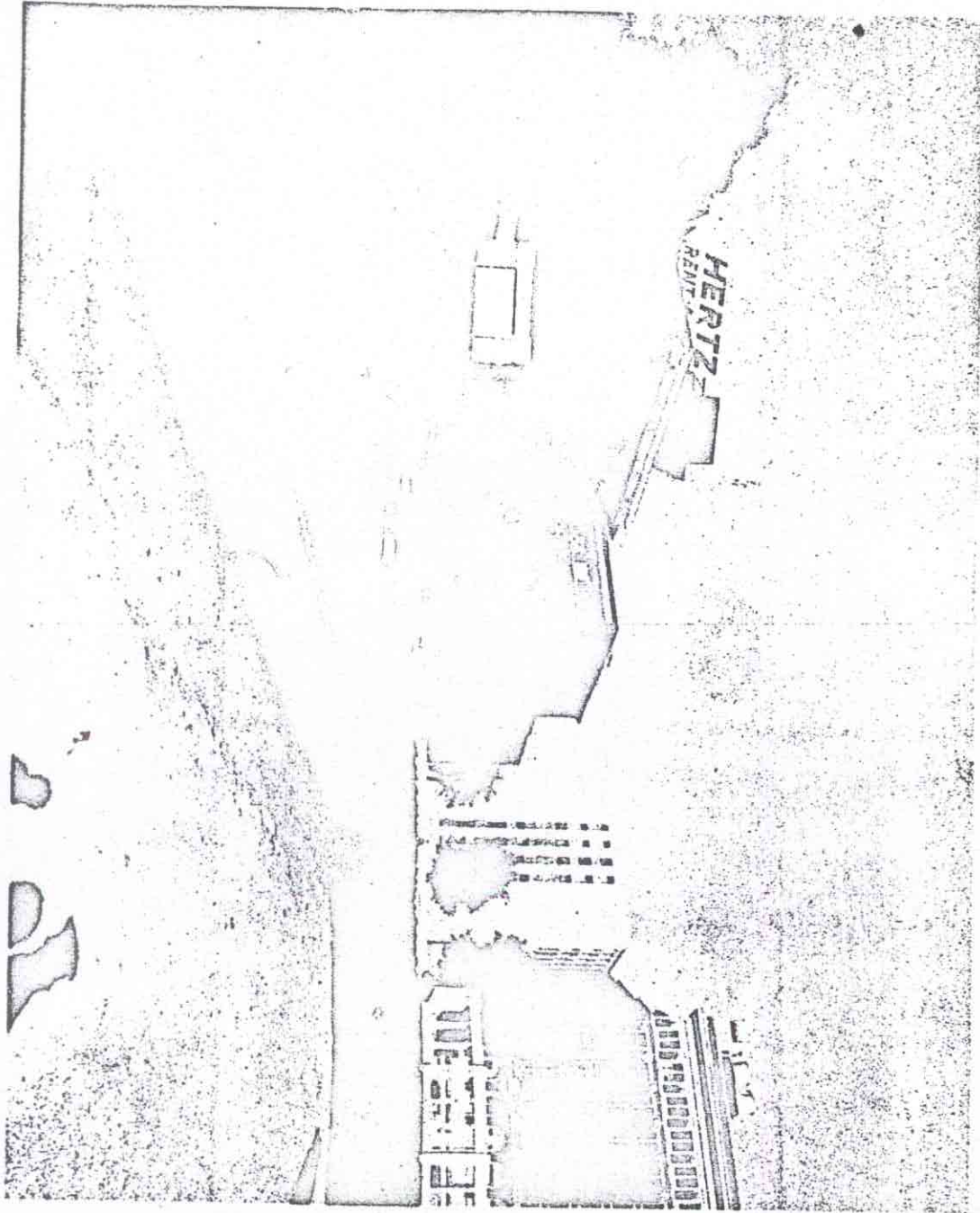
Rare Ek
Coll

FROM ELM STREET UNDERPASS TOWARDS 411 ELM

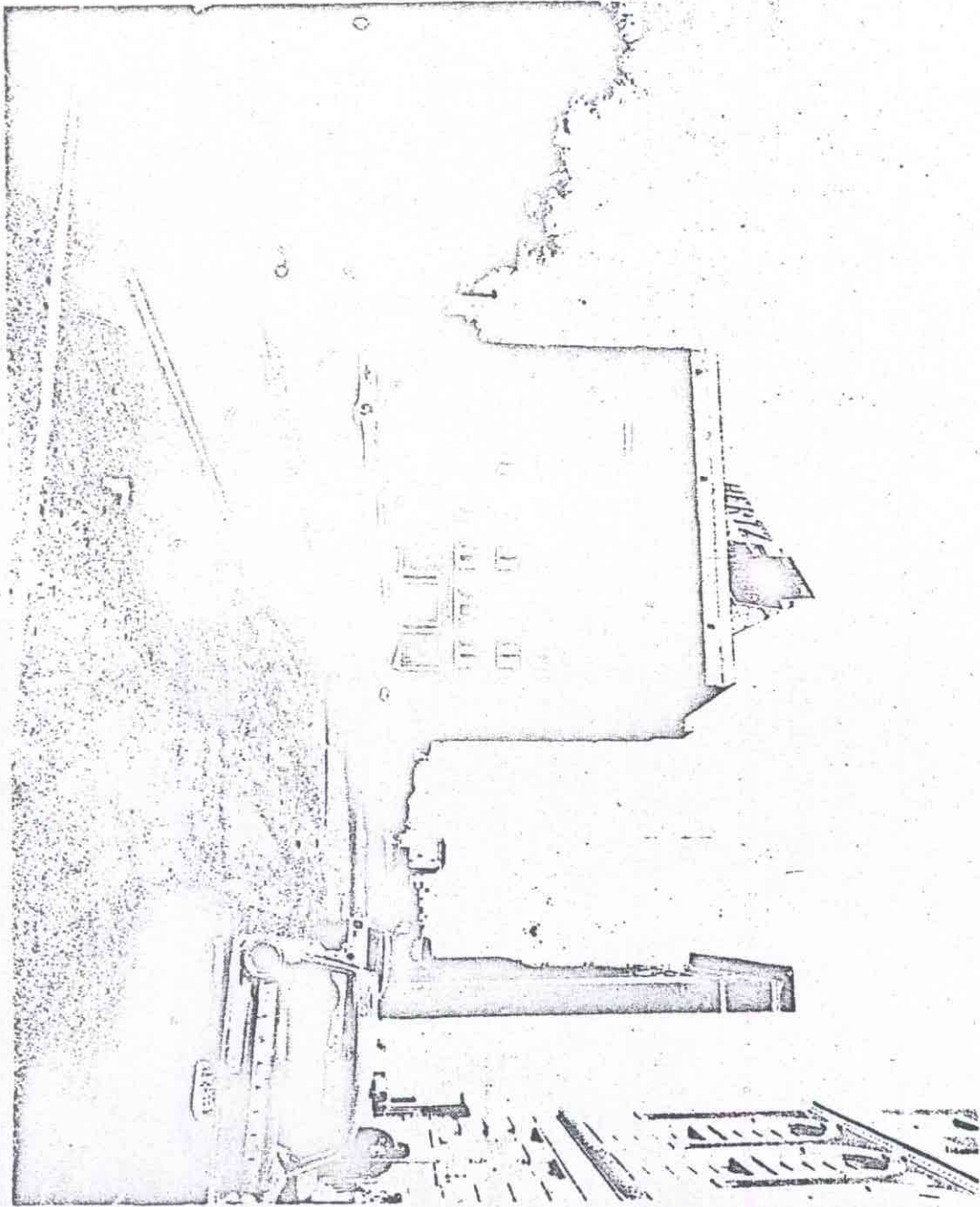


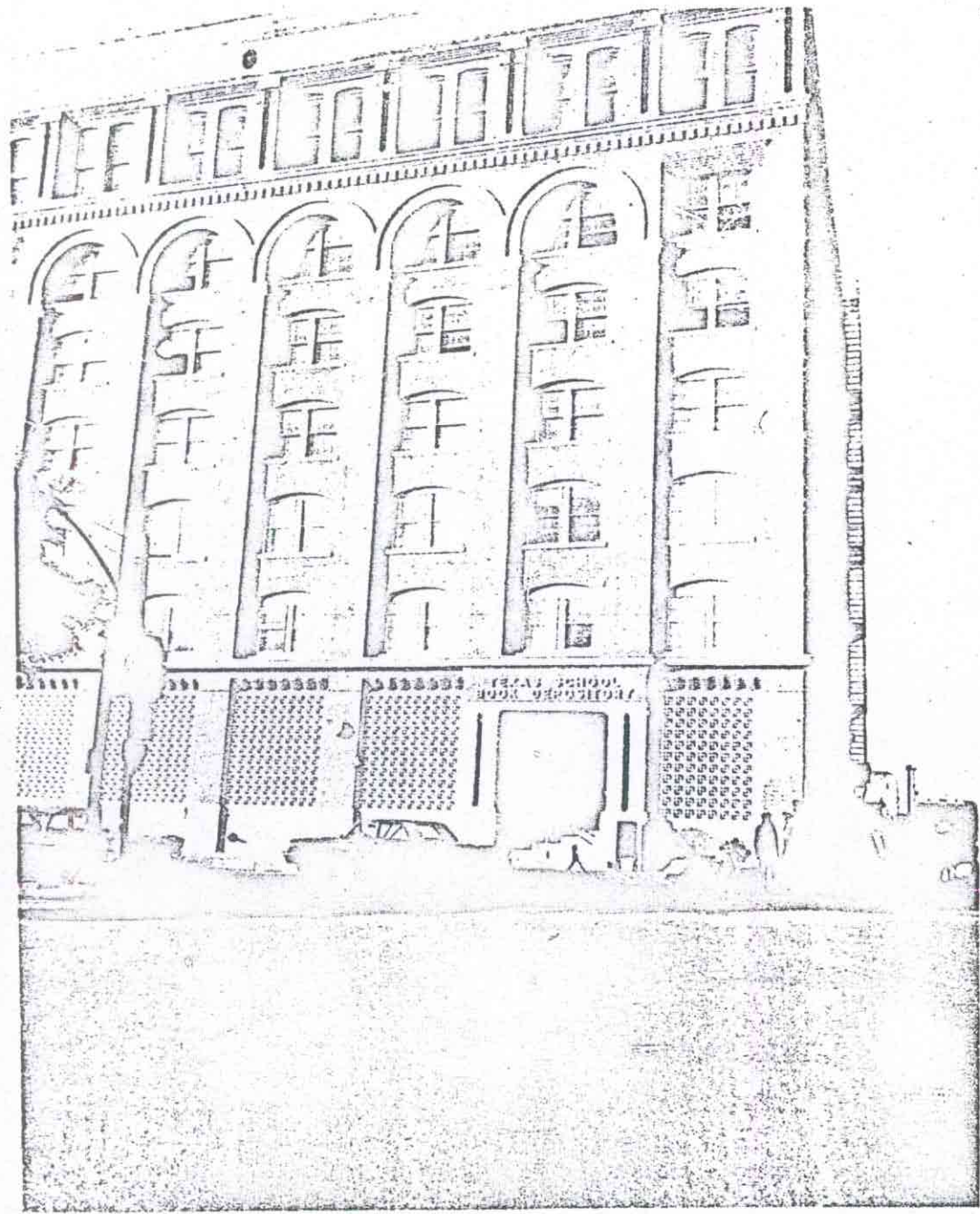
Plot 17

FROM TRIPLE UNDERPASS TO BLDG. 411 ELM

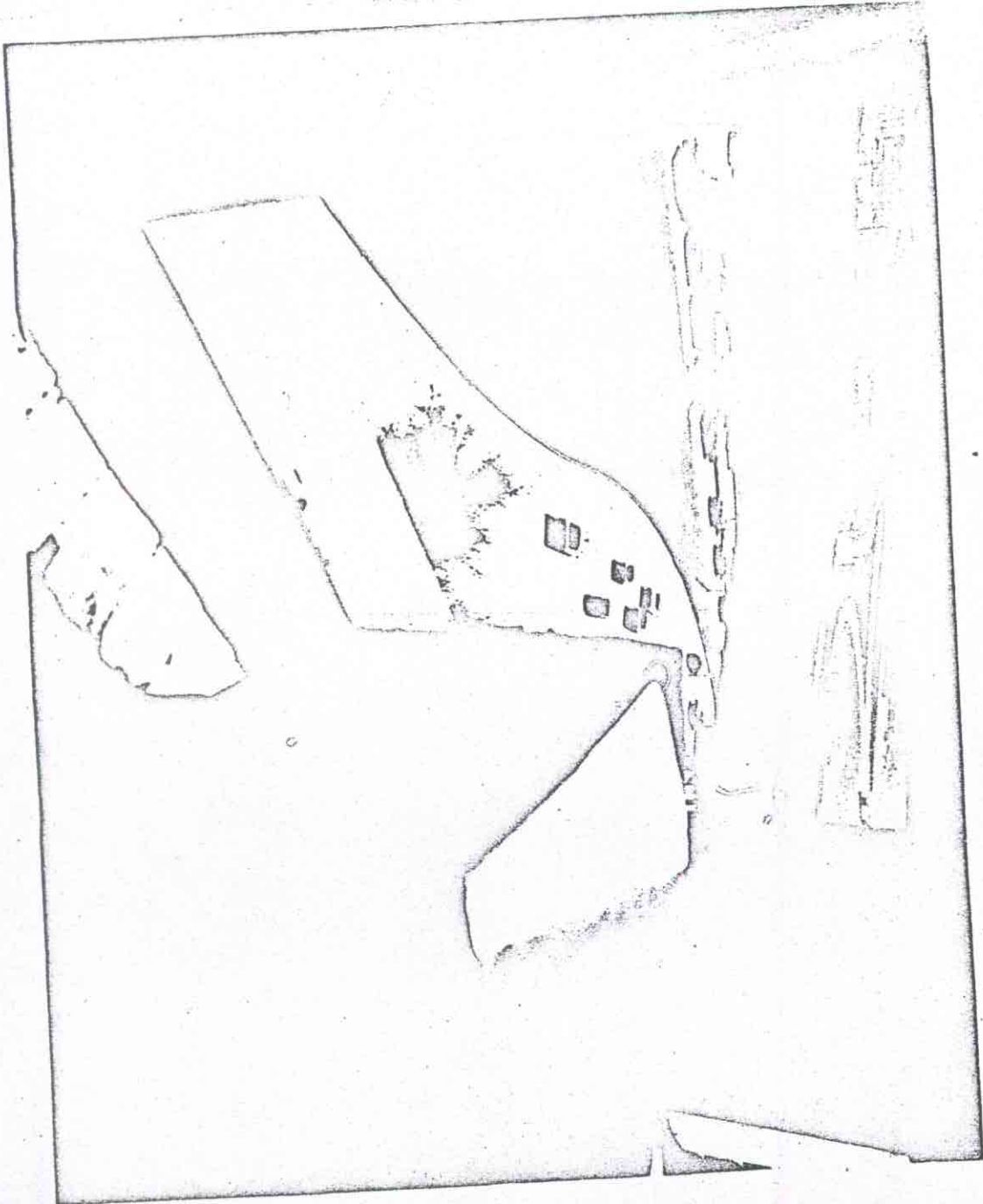


FROM MAIN AND HOUSTON TO 411 ELM





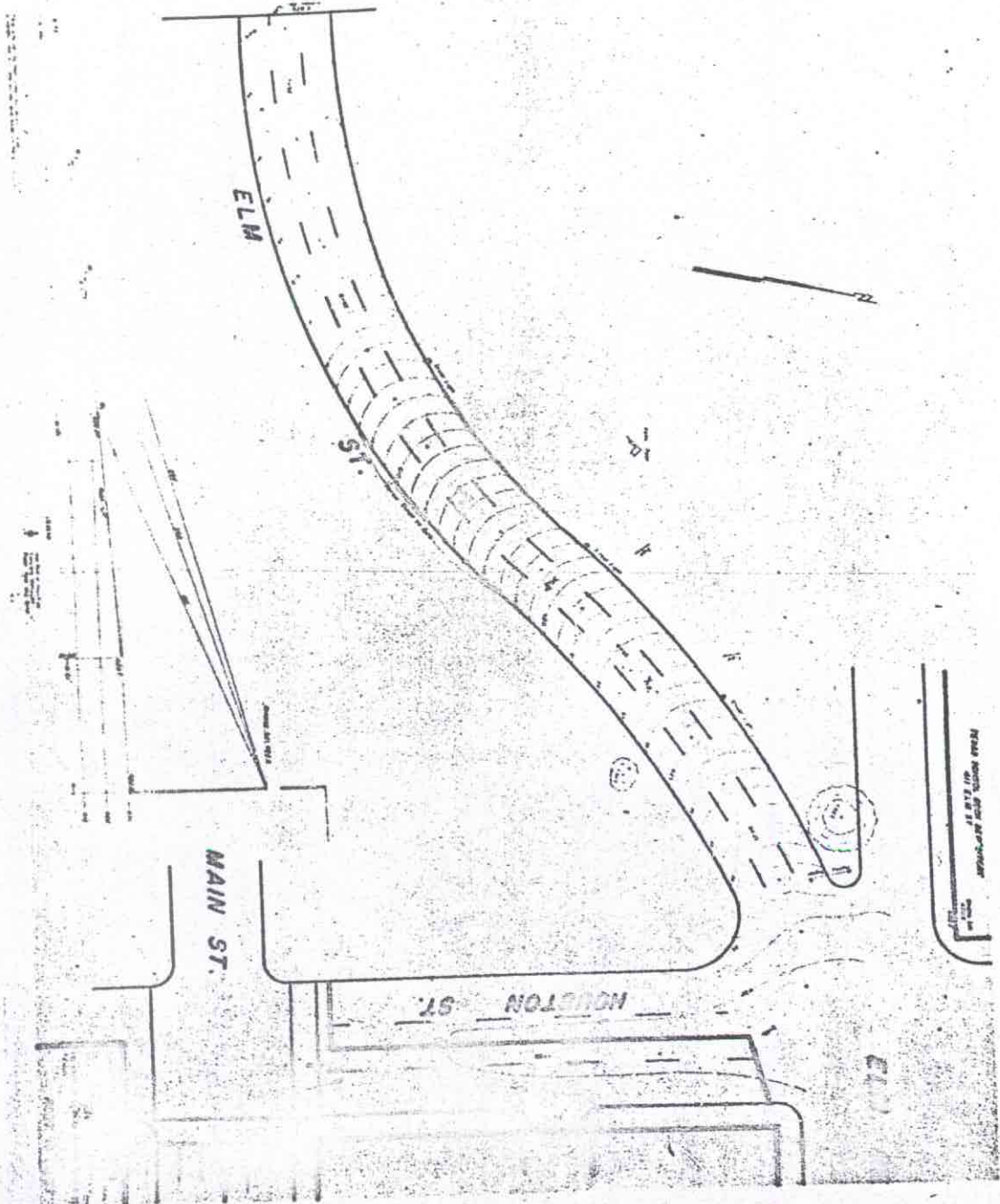
6th FLOOR
LOOKING OUT WINDOW 613
TOWARD ELM STREET
SHOTS WERE FIRED
AT PEOPLE UNDERPASS.



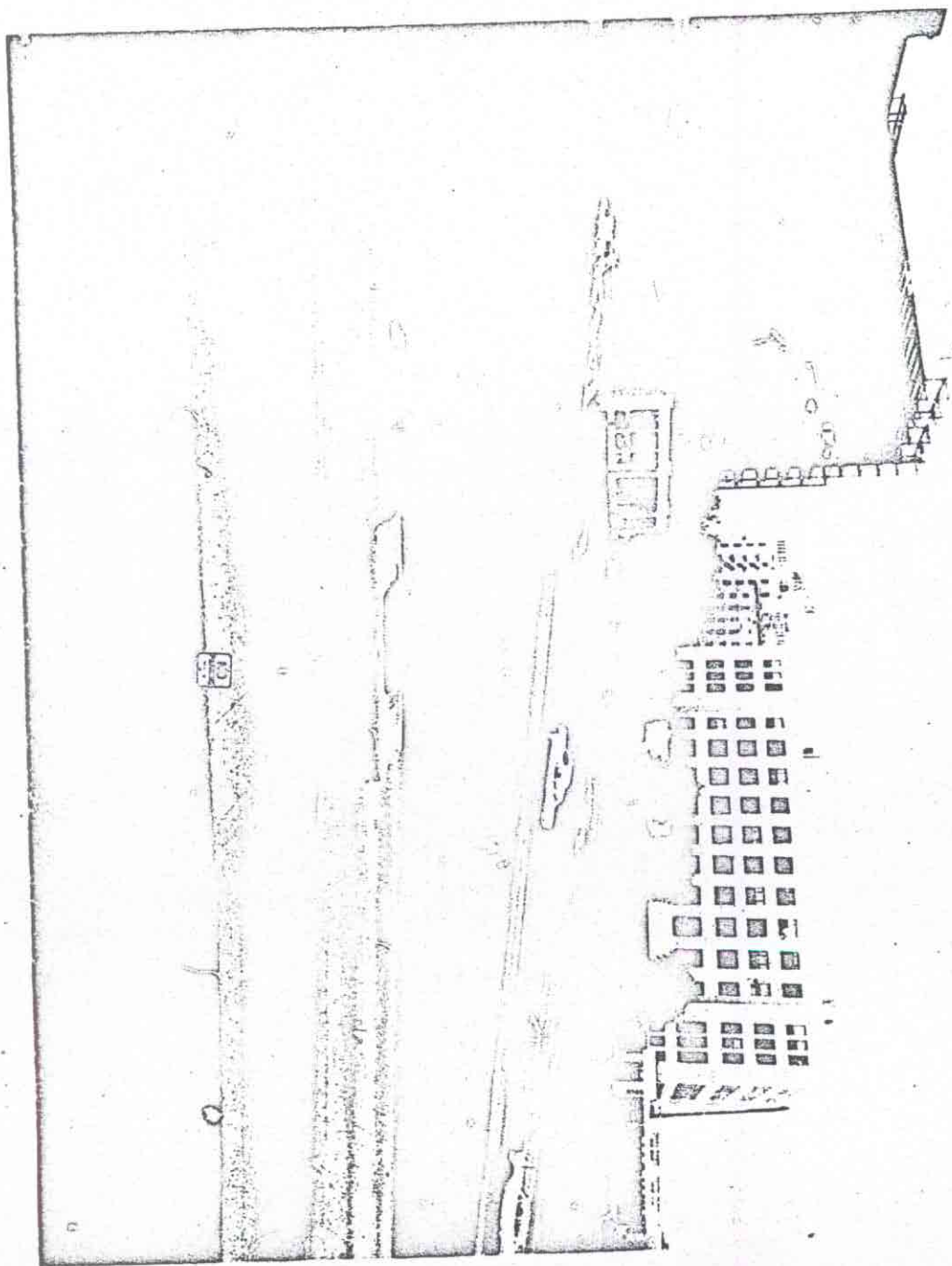
RECONSTRUCTED BY USSS
1st. SHOT



TRAJECTORY OF BULLETS FROM WINDOW TO STREET



RECONSTRUCTION USSR VIEW OF CAMP
2 AND 3 SHOTS



RECONSTRUCTION 11-27-63 2 and 3 SHOTS



2nd FLOOR
FROM STAIRWAY TO 1st. FLOOR TO DOOR LEADING TO LUNCHROOM

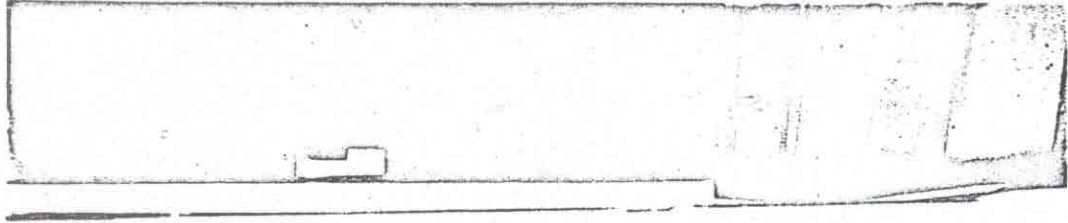
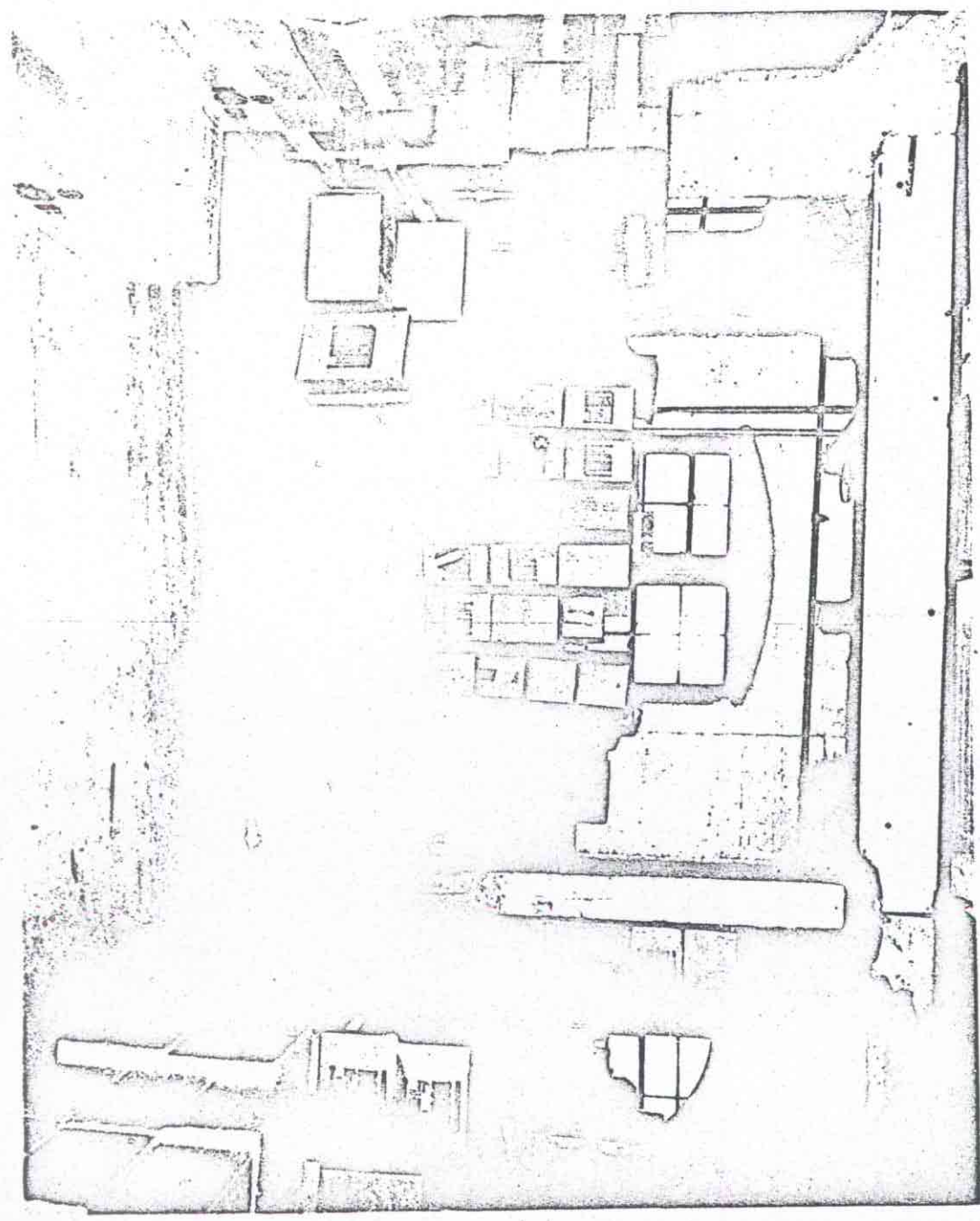
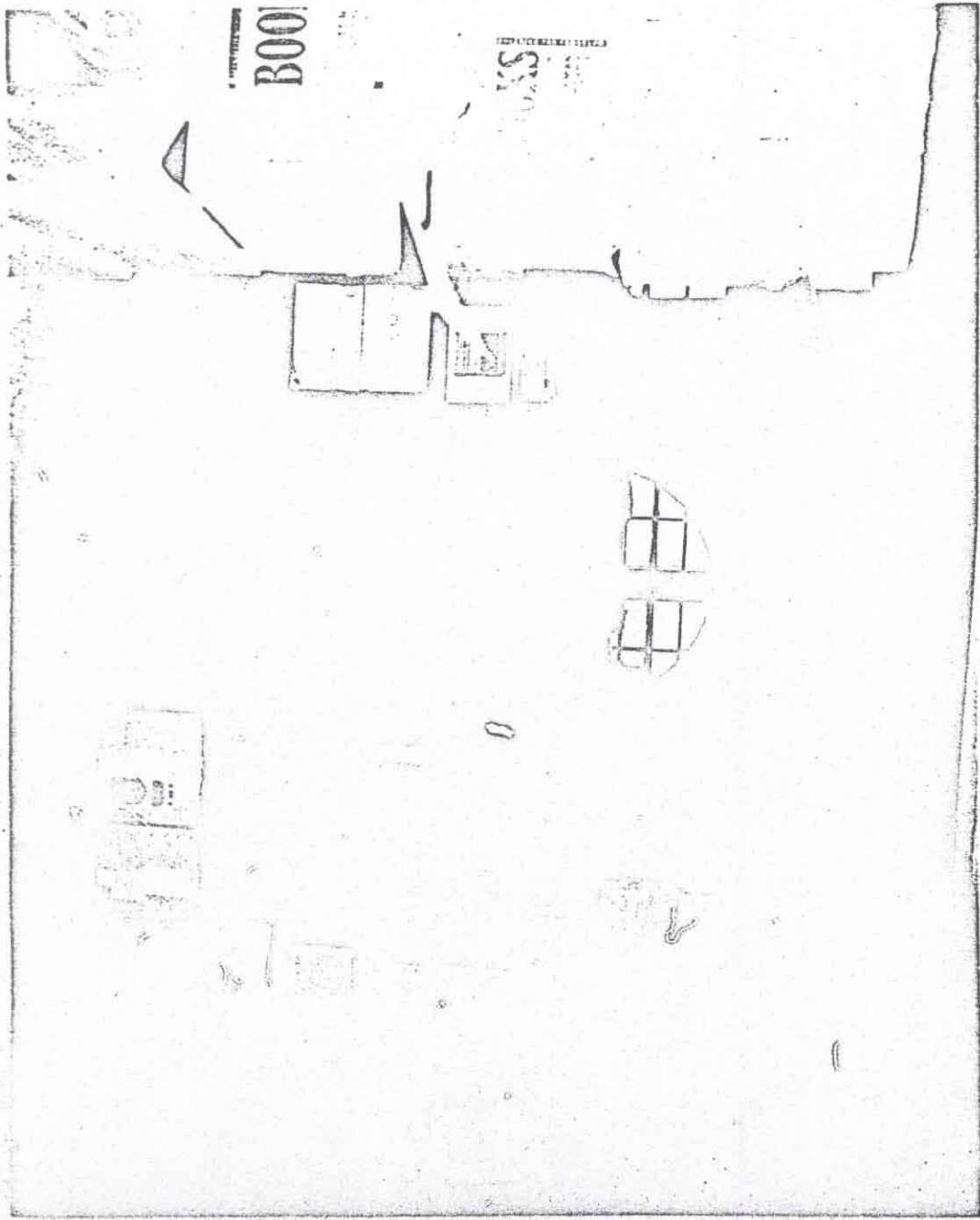


PLATE 411
THE GREAT WALL OF CHINA



FLOOR 411 ELEV
DEPTH OF FRONT OF 411
APPROXIMATE IN 2nd AVENUE

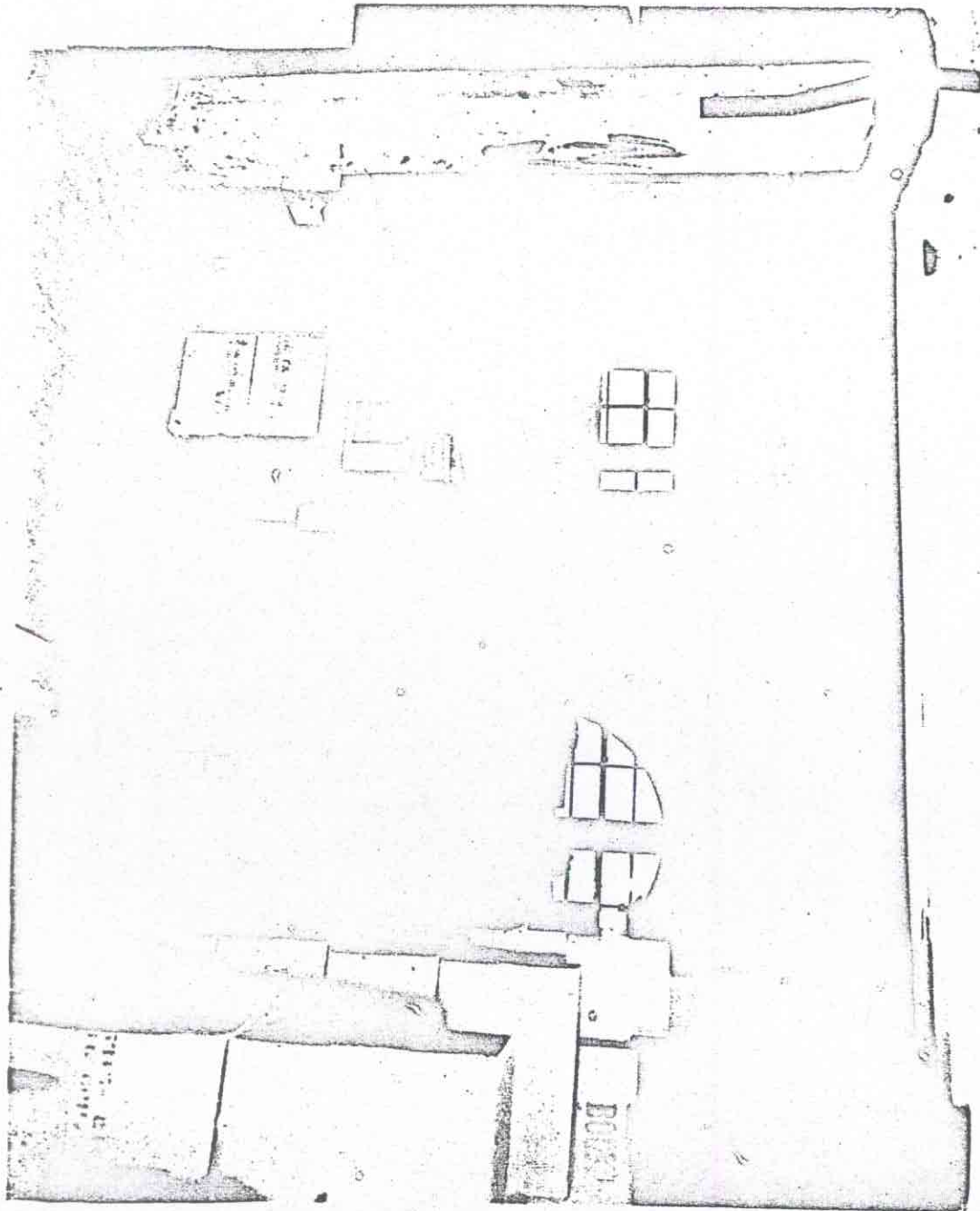


B001

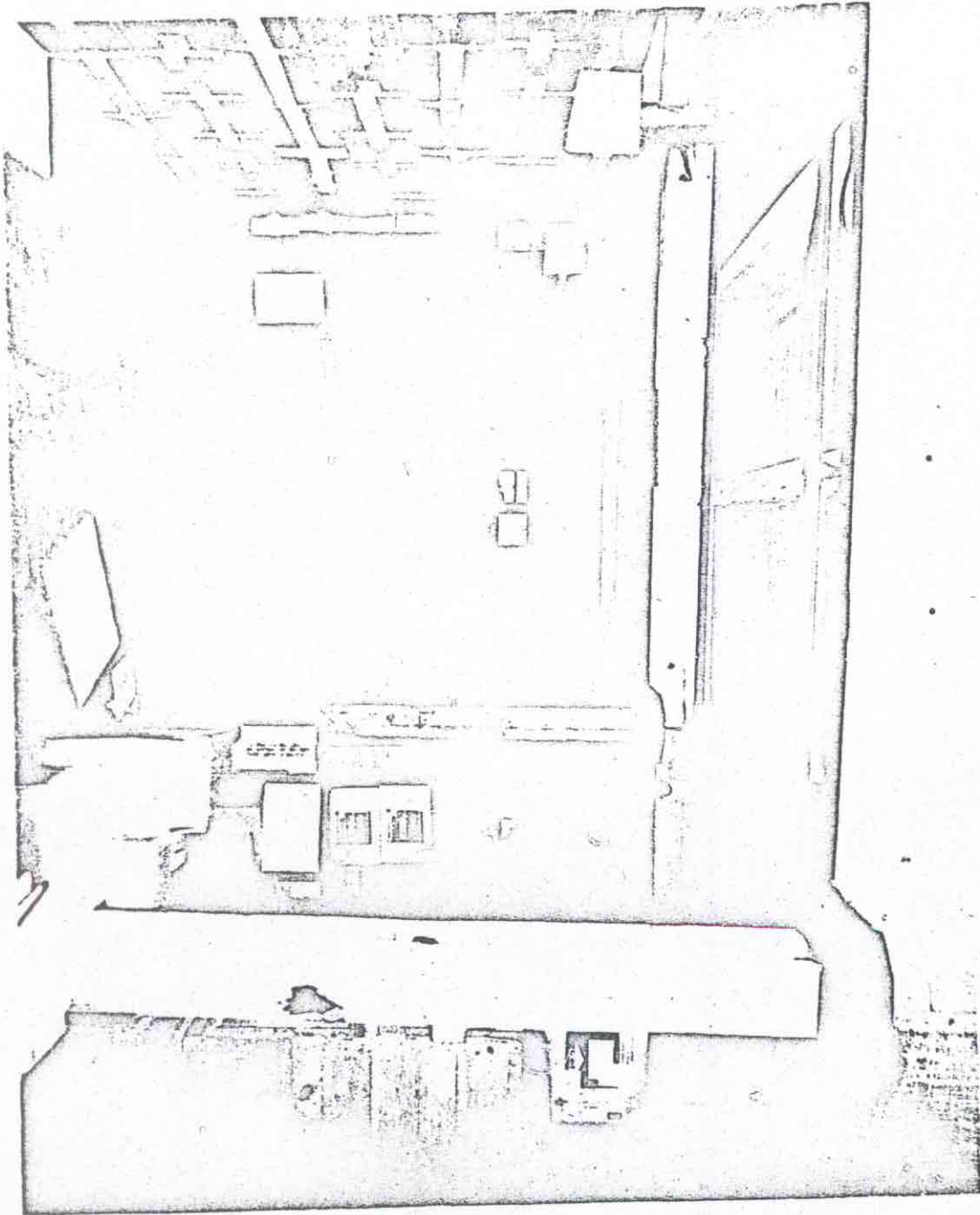
SS

6th FLOOR 411 ELM

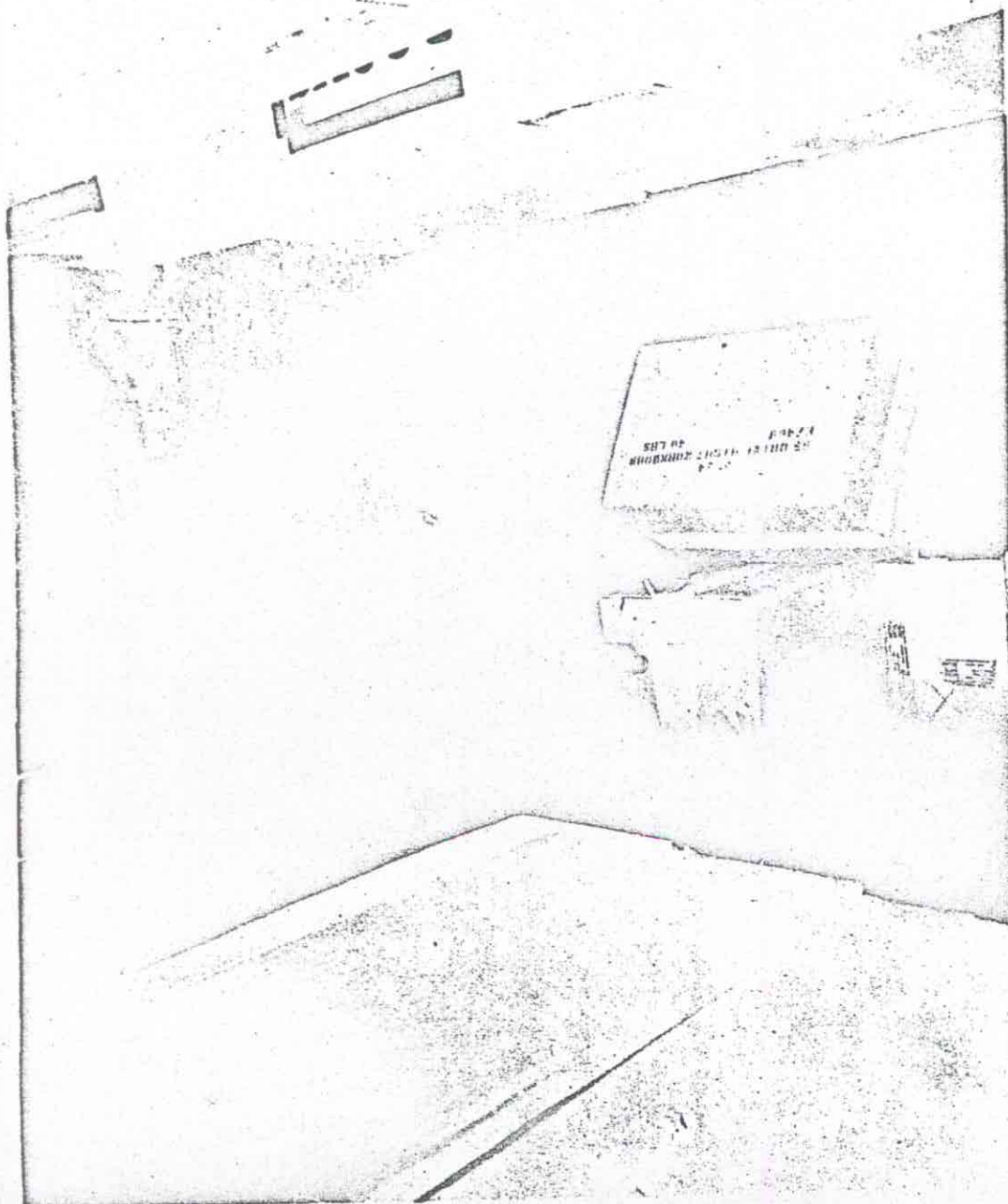
TAKEN 40 FEET FROM WINDOW WHERE SHOTS WERE FIRED



TRAIN 85 FT. NORTH OF WINDOW WHERE SHOTS WERE FIRED



6th FLOOR 411 ELM
TAKEN IN 3rd AISLE FROM HOUSTON LOOKING WEST
NO SIGNIFICANCE

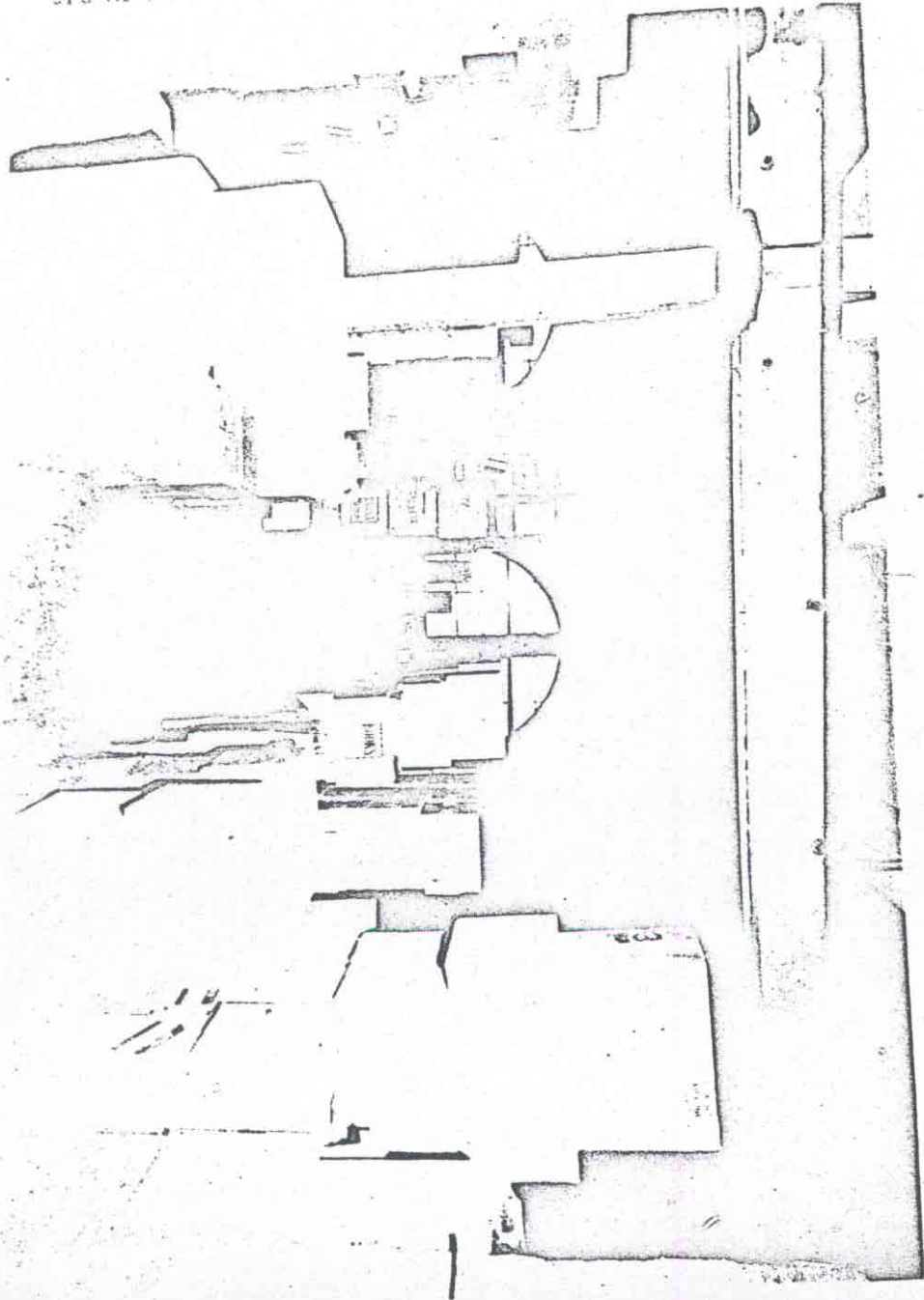


TAKEN 25 12 1957
IN 3rd AISLE
NO. 51

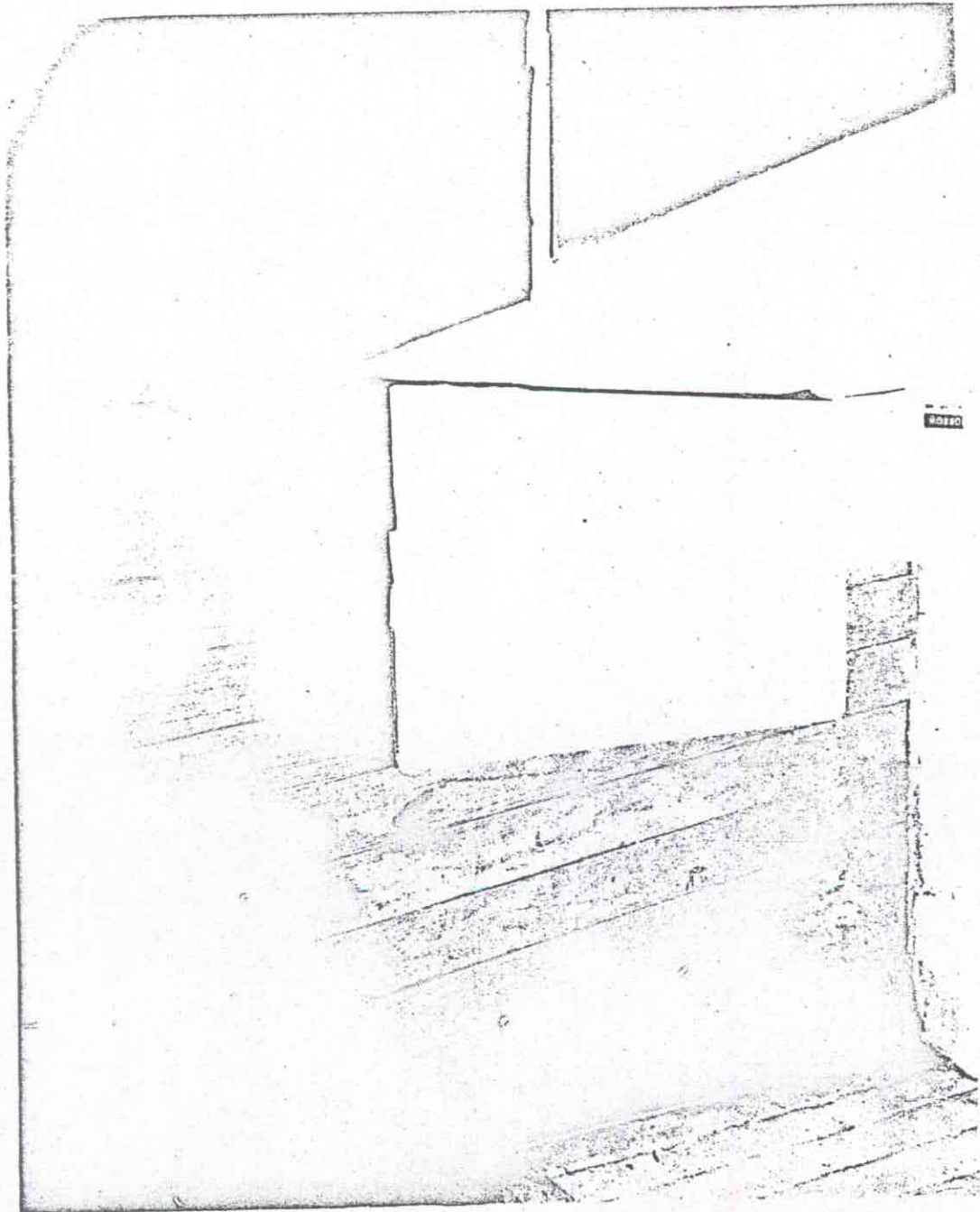
ST. BLDG.
FLOORING SOUTH



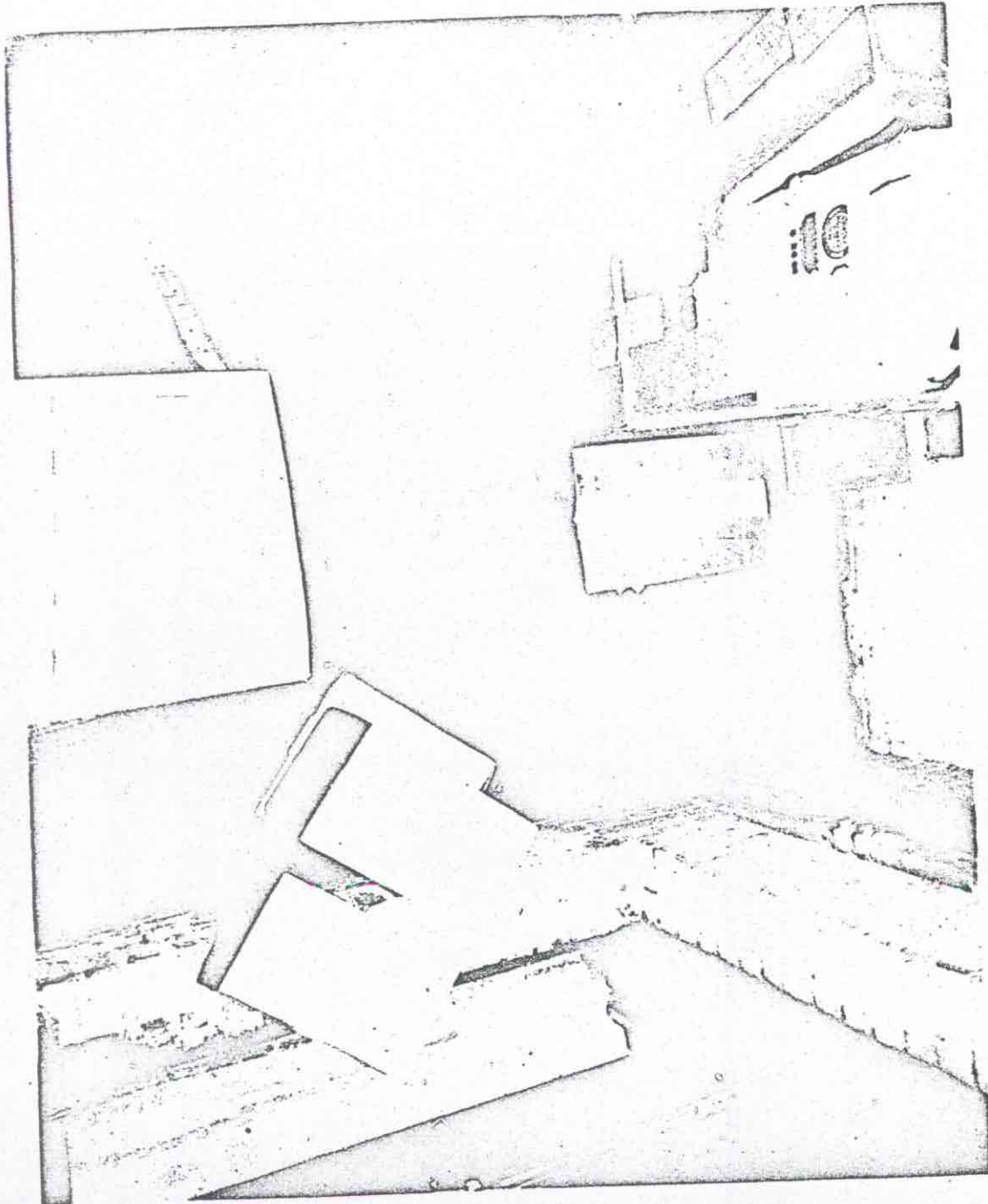
6th FLOOR 411 ELM
TAKEN 45 FEET FROM FRONT WINDOWS ON 1ST FLOOR AT
3rd AISLE FROM HOUSTON, NO SIGNIFICANCE



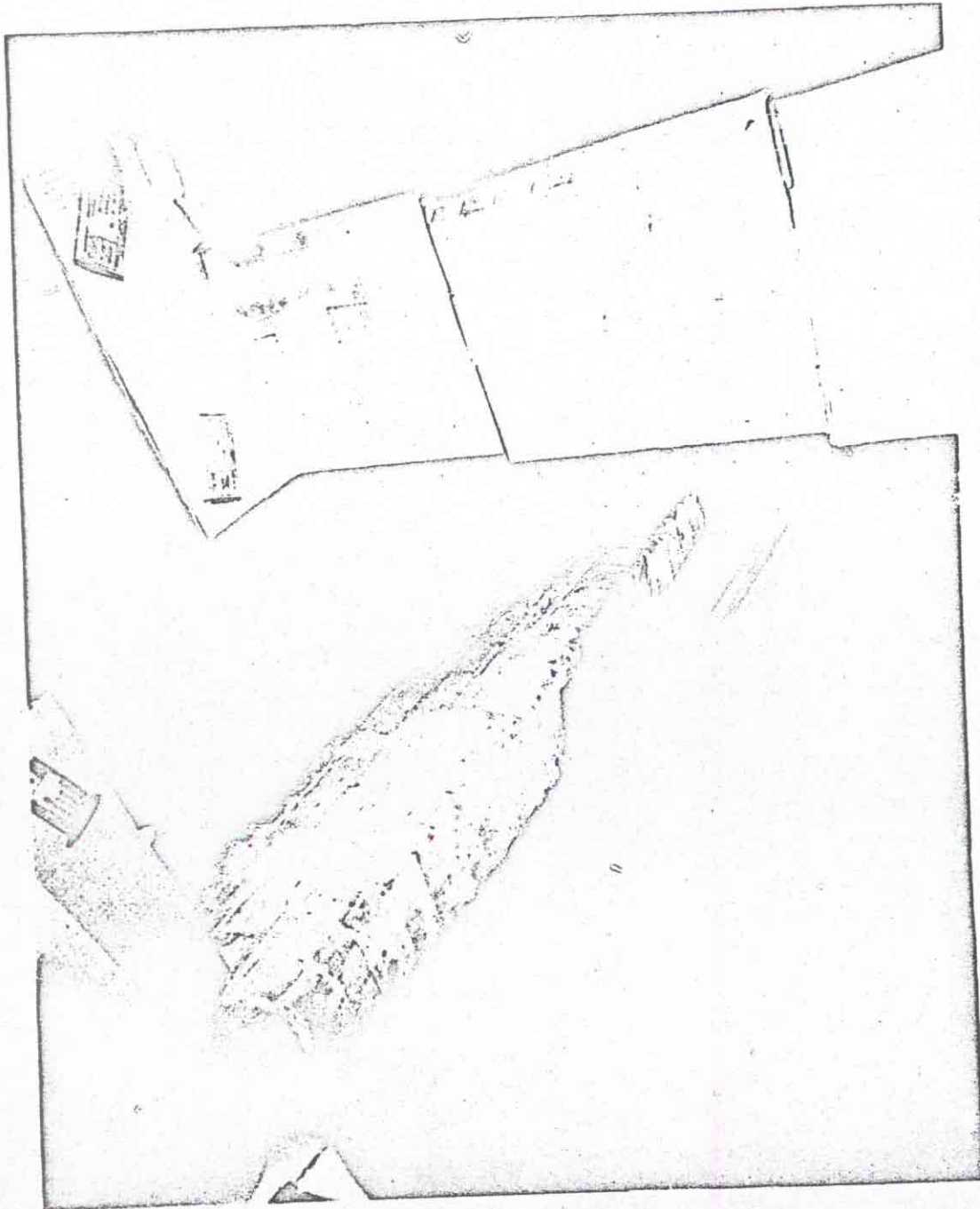
6th FLOOR
PALM PRINT FOUND ON BOX
GUN WRAPPER FOUND TO RIGHT OF BOX



6th FLOOR
PAPER THAT GUN WAS WRAPPED IN FOUND IN CORNER



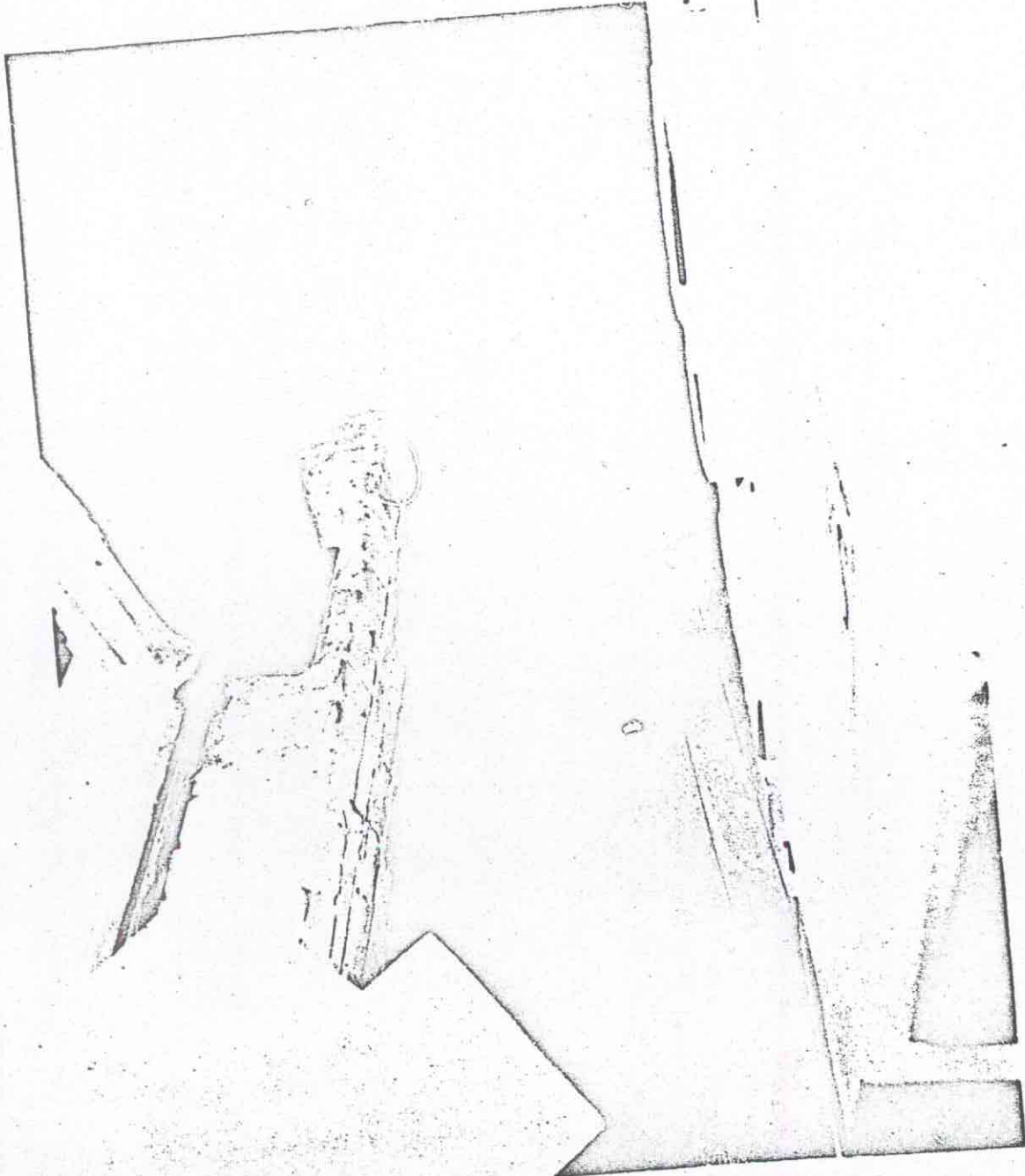
6th FLOOR 411 ELM
TAKEN TOWARDS WINDOW WHERE SHOTS WERE FIRED
BOXES USED FOR GUN REST IN WINDOW
EMPTY SHELLS ON FLOOR. LOOKING SOUTH EAST



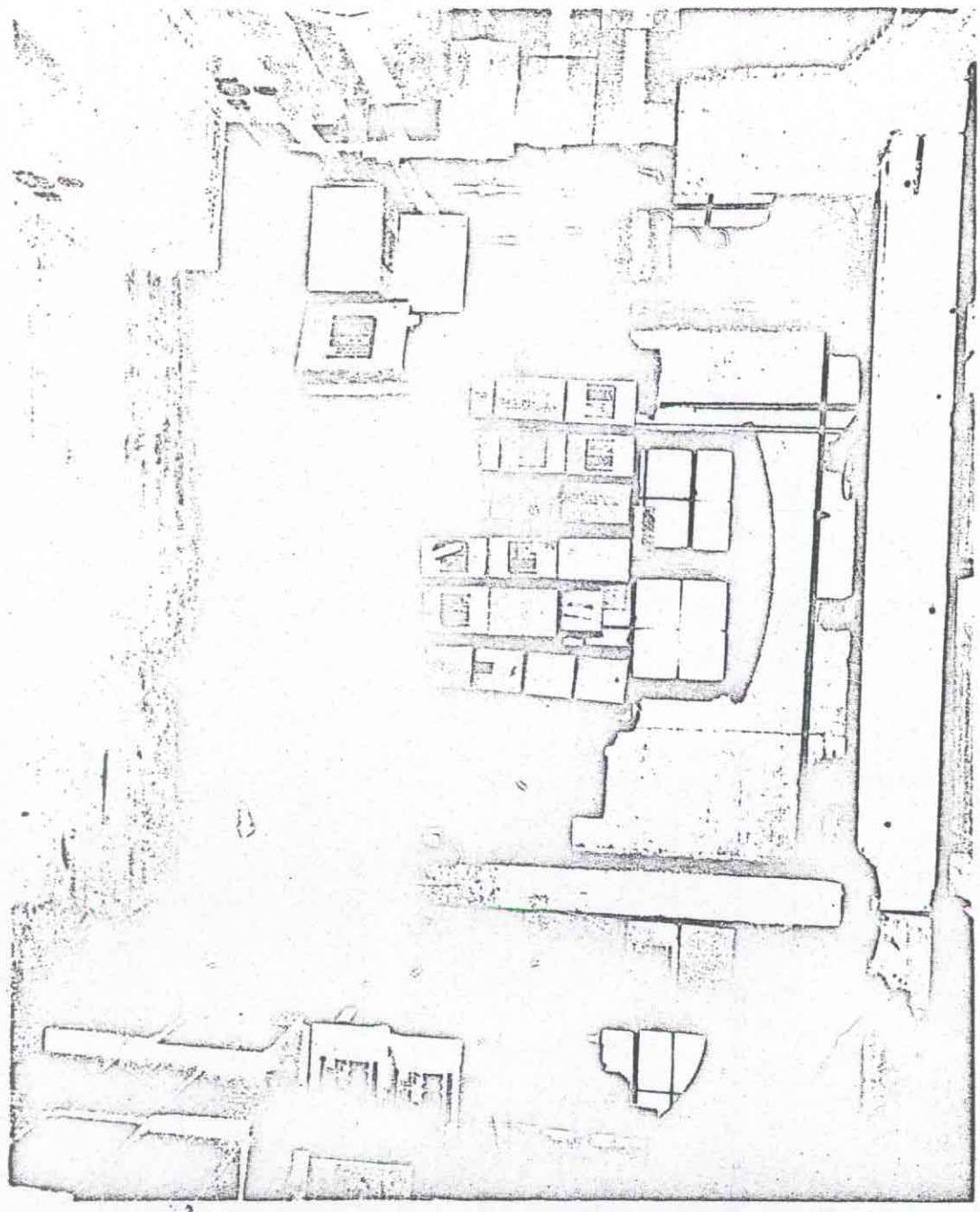
5th BLOOD 411 ELM
TAKEN BY VIEW OF THREE SHOTS WERE FIRED
BOXES WERE IN THE BEST AND 3 EMPTY HULLS



6th FLOOR 411 ELM
TAKEN BY WINDOW WHERE SHOTS FIRED
LOOKING TOWARDS EMPTY HULLS ON FLOOR



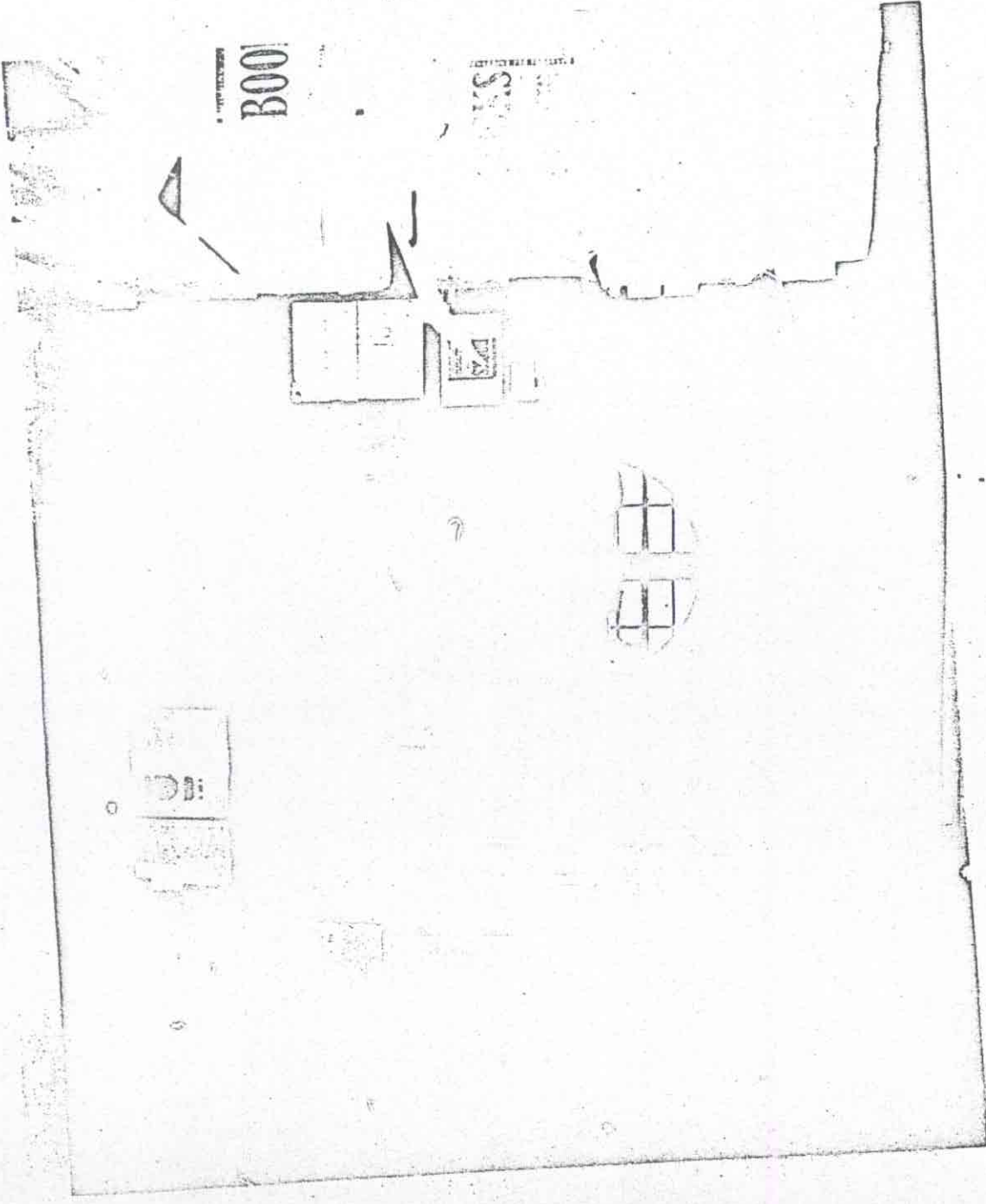
... 11 PM ...
... THIS WEEK ...



ALL RIGHTS RESERVED
COPYRIGHT © 1988
BY THE BOARD OF DIRECTORS

B001

1988



6th FLOOR 411 ELM

TAKEN 40 FEET FROM WINDOW WHERE SHOTS WERE FIRED

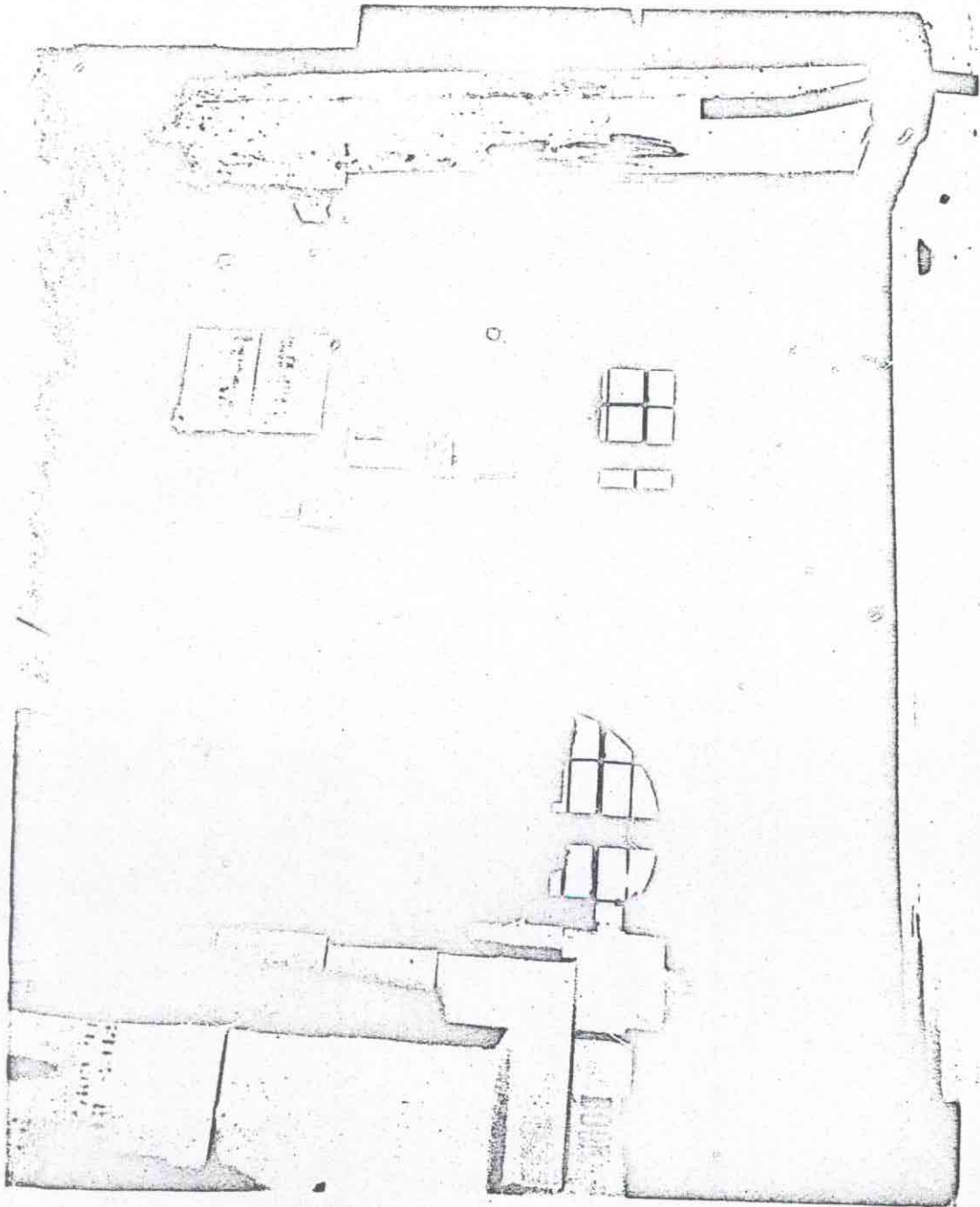
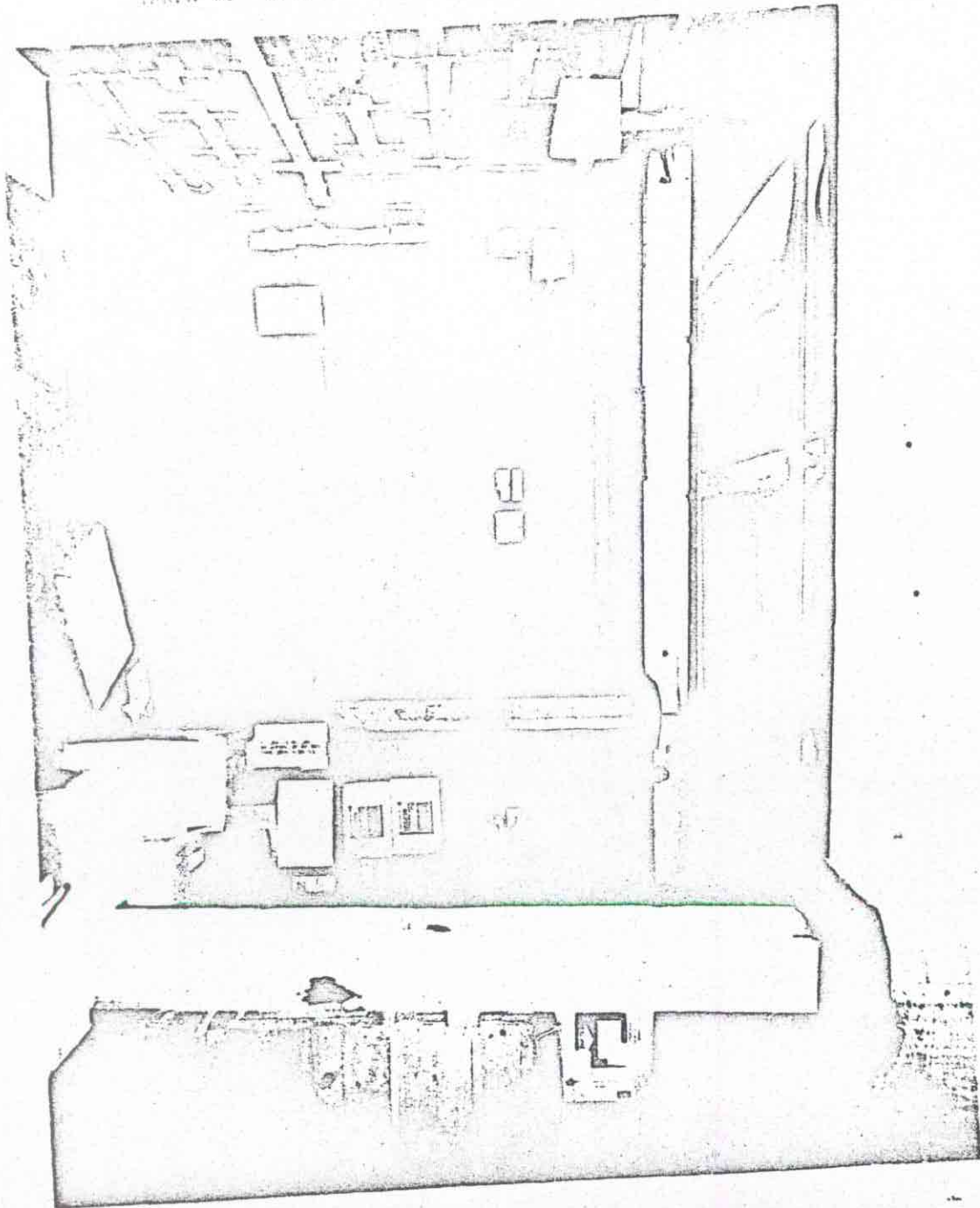
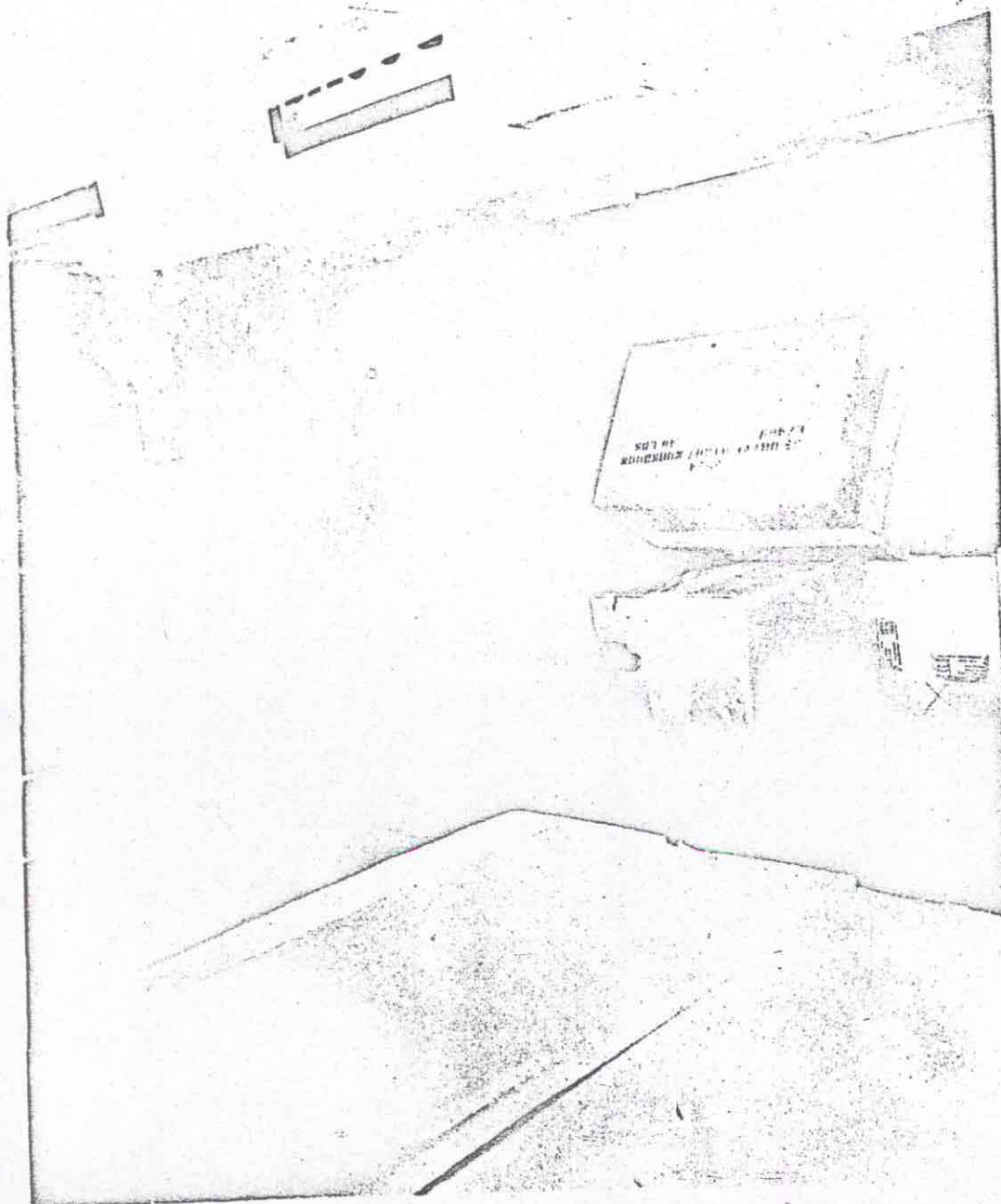


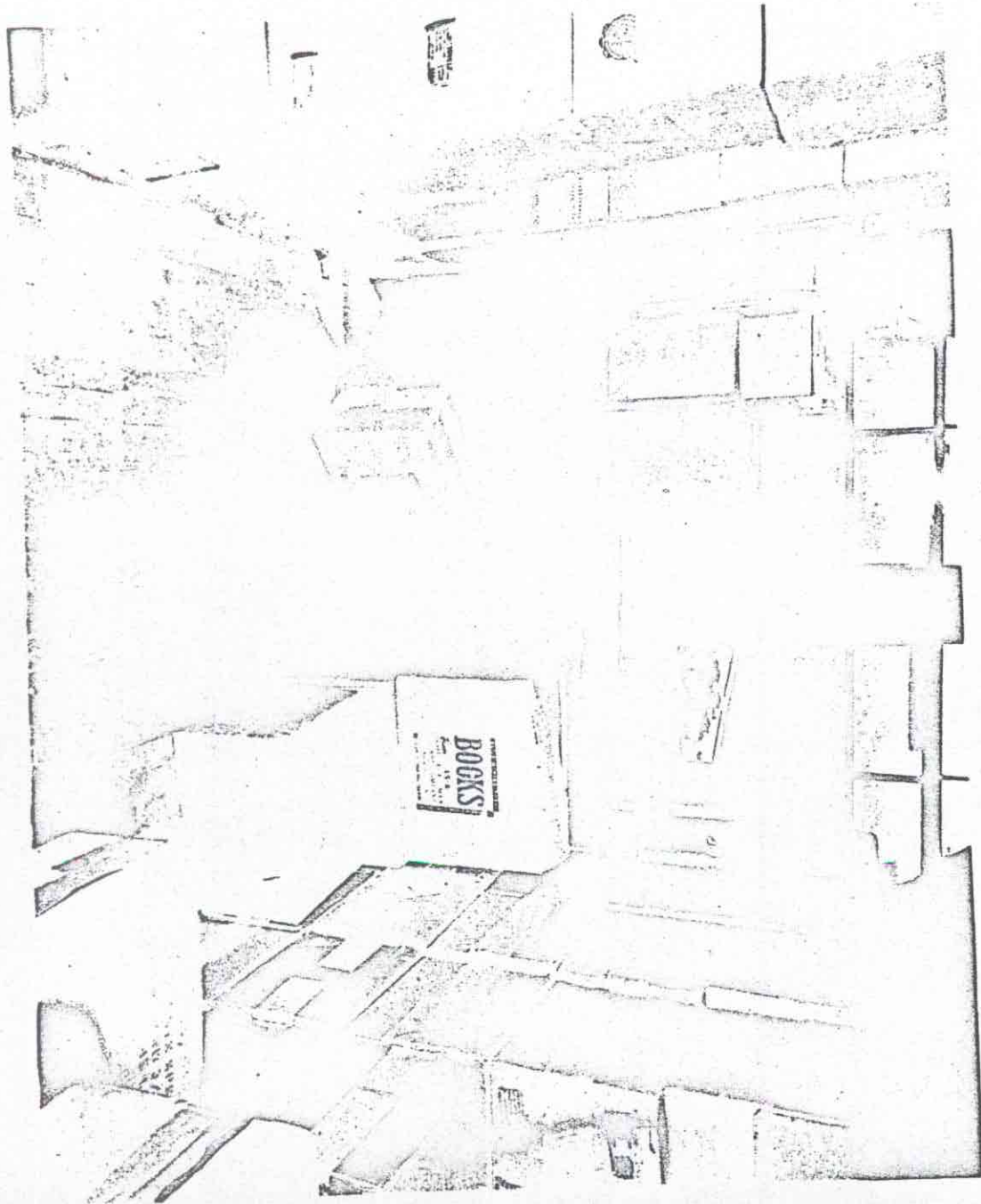
TABLE 65 FT. NORTH OF WINDOW WHERE SHOTS WERE FIRED



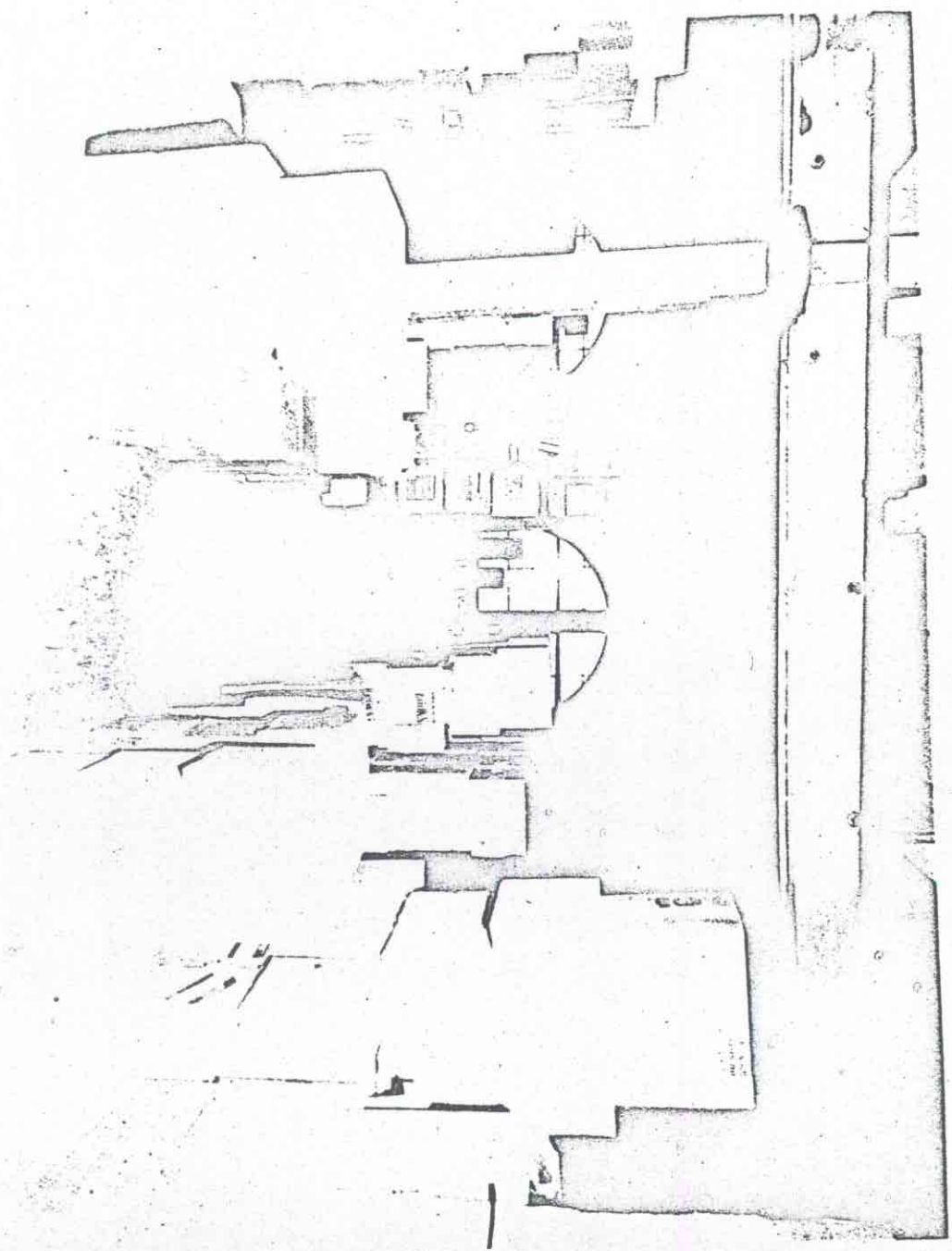
6th FLOOR 411 ELM
TAKEN IN 3rd AISLE FROM HOUSTON LOOKING WEST
NO SIGNIFICANCE



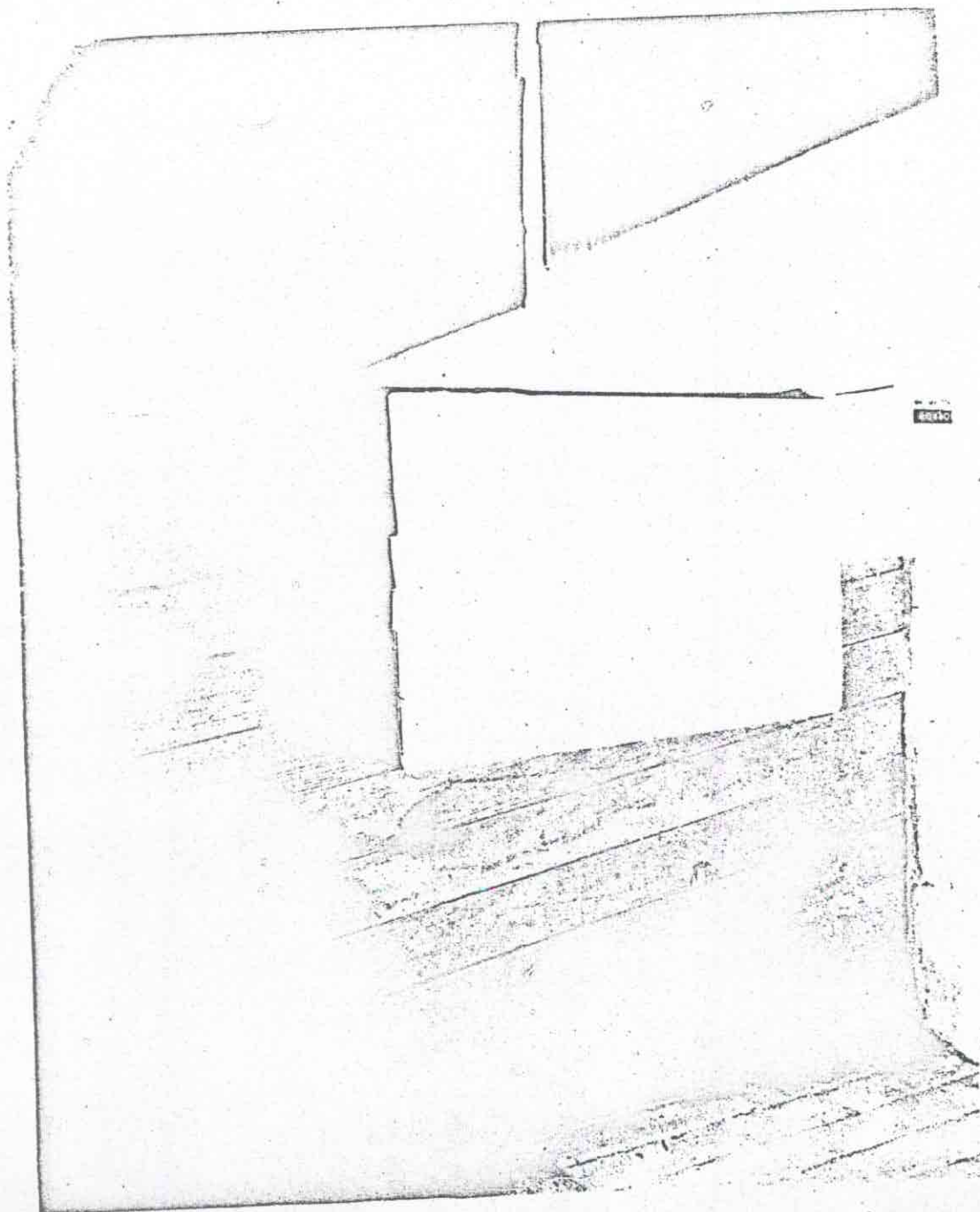
6th FLOOR OF BLDG.
TAKEN 25 FEB 1968
IN 3rd AISLE FROM EAST END OF BLDG.
NO SIGNIFICANT OBJECTS



6th FLOOR 411 ELM
TAKEN 45 FEET FROM FRONT WINDOWS ON ELM STREET
3rd AISLE FROM HOUSTON, NO SIGNIFICANCE



6th FLOOR
PALM PRINT FOUND ON BOX
CUP WRAPPER FOUND TO RIGHT OF BOX

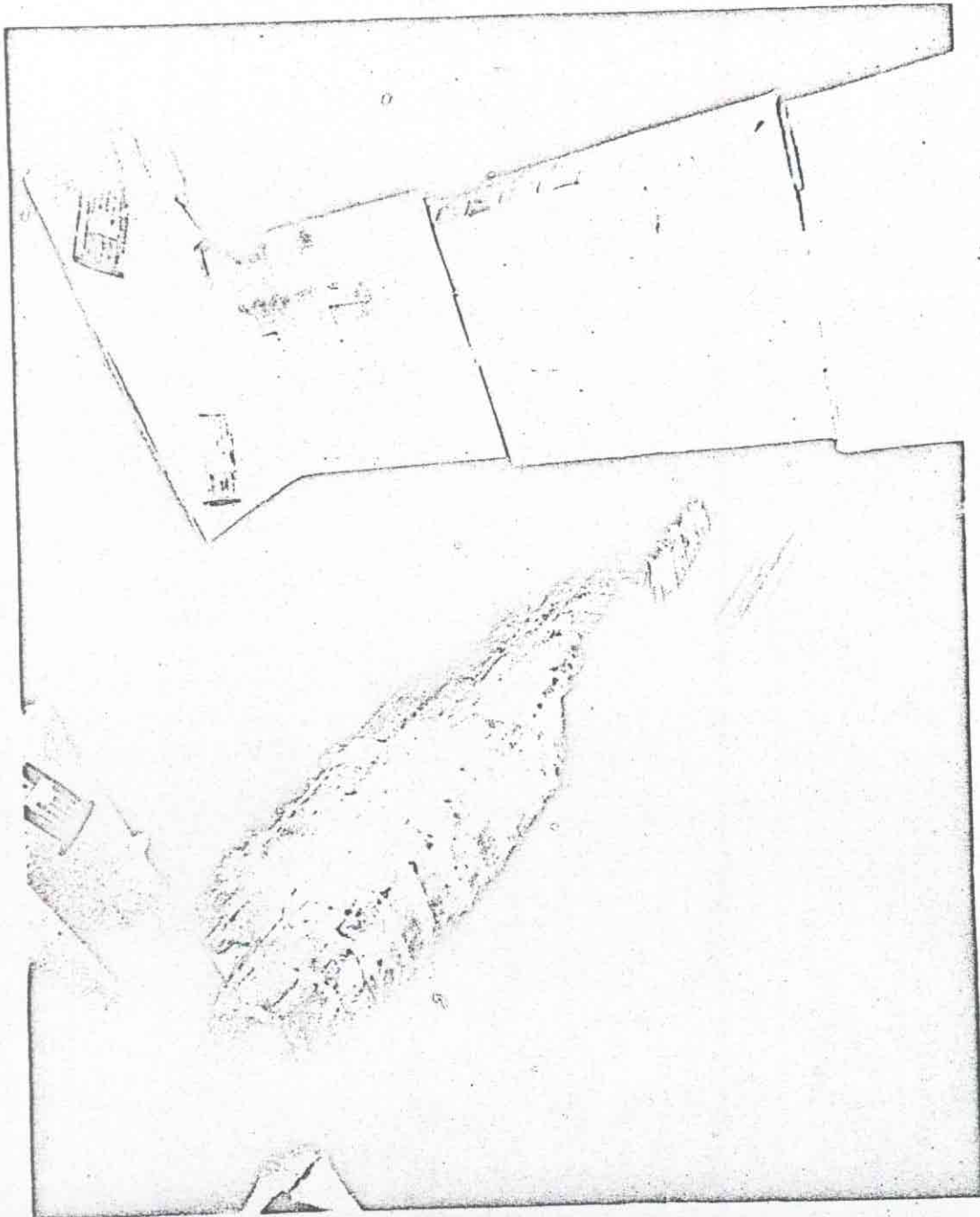


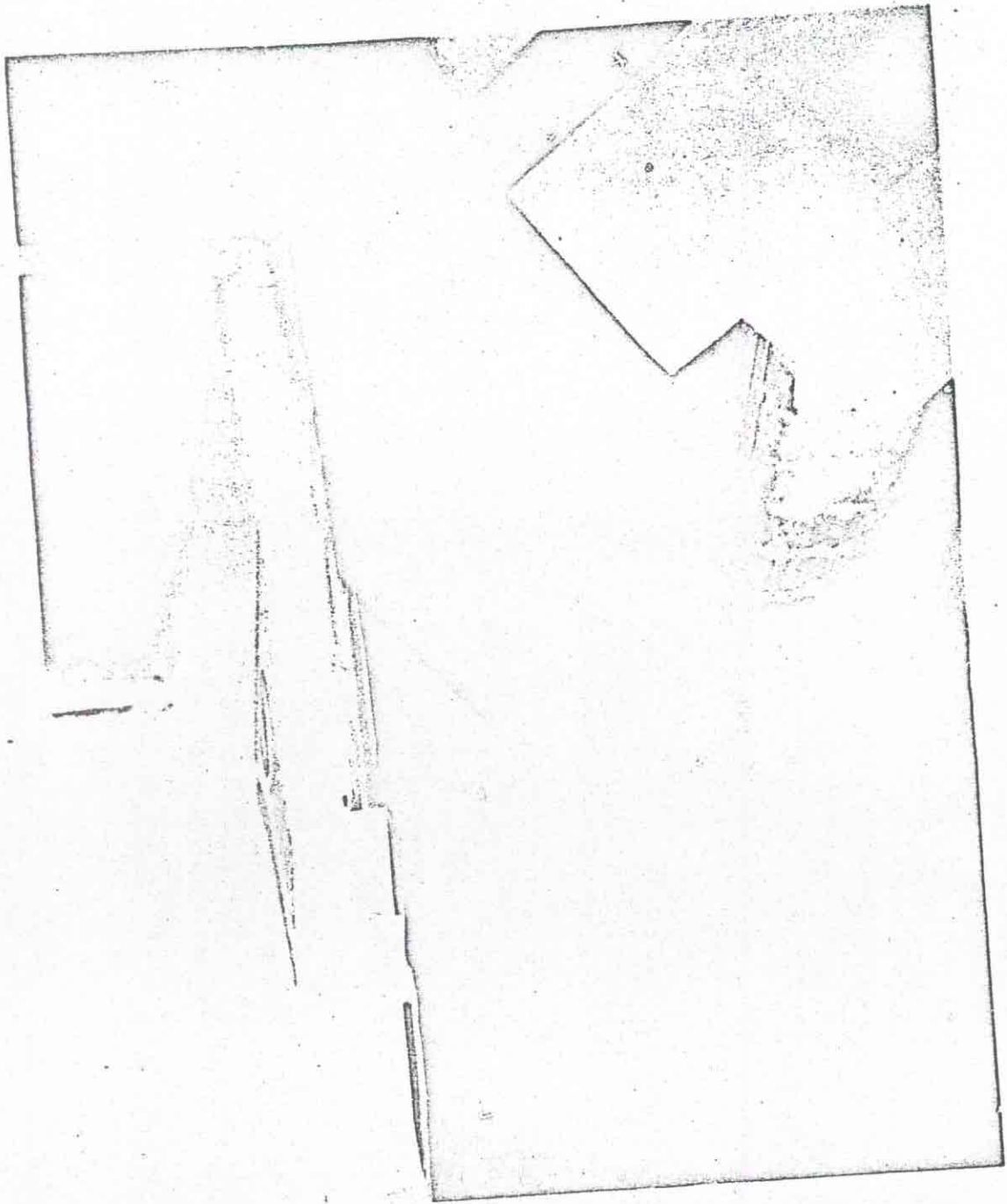
4262

6th FLOOR
PAPER THAT GUN WAS WRAPPED IN FOUND IN CORNER



6th FLOOR 411 ELM
TAKEN TOWARDS WINDOW WHERE SHOTS WERE FIRED
BOXES USED FOR GUN REST IN WINDOW
EMPTY HULLS ON FLOOR. LOOKING SOUTH EAST

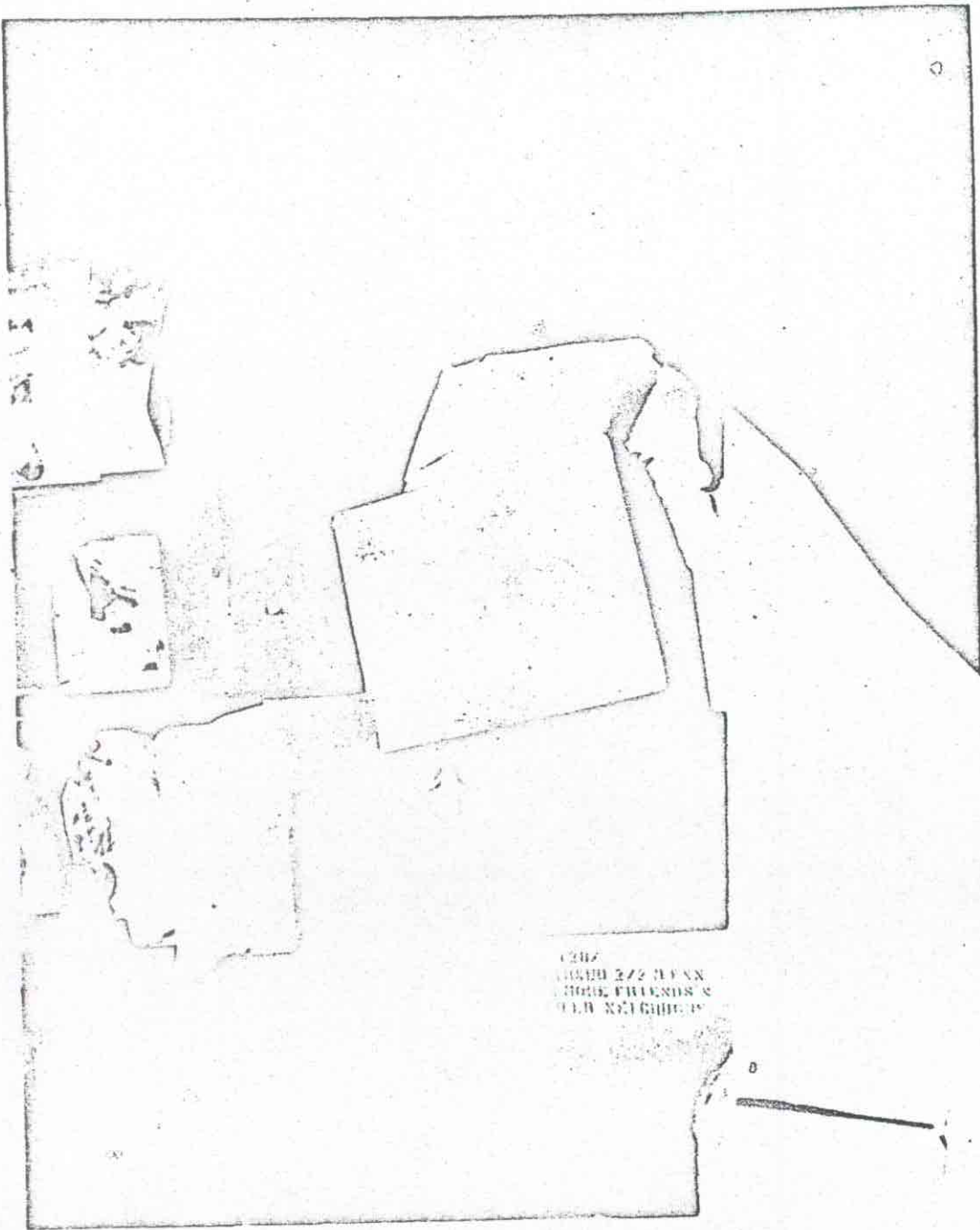




6th FLOOR 411 ERM
TABLE BY WINDOW WHITE SIGNS
BOXES WITH 100 GUN RIFLE AND 3 EMPTY HULLS



6th FLOOR 411 ELM
TAKEN BY WINDOW WHERE SHOTS FIRED
LOOKING TOWARDS EMPTY HULLS ON FLOOR



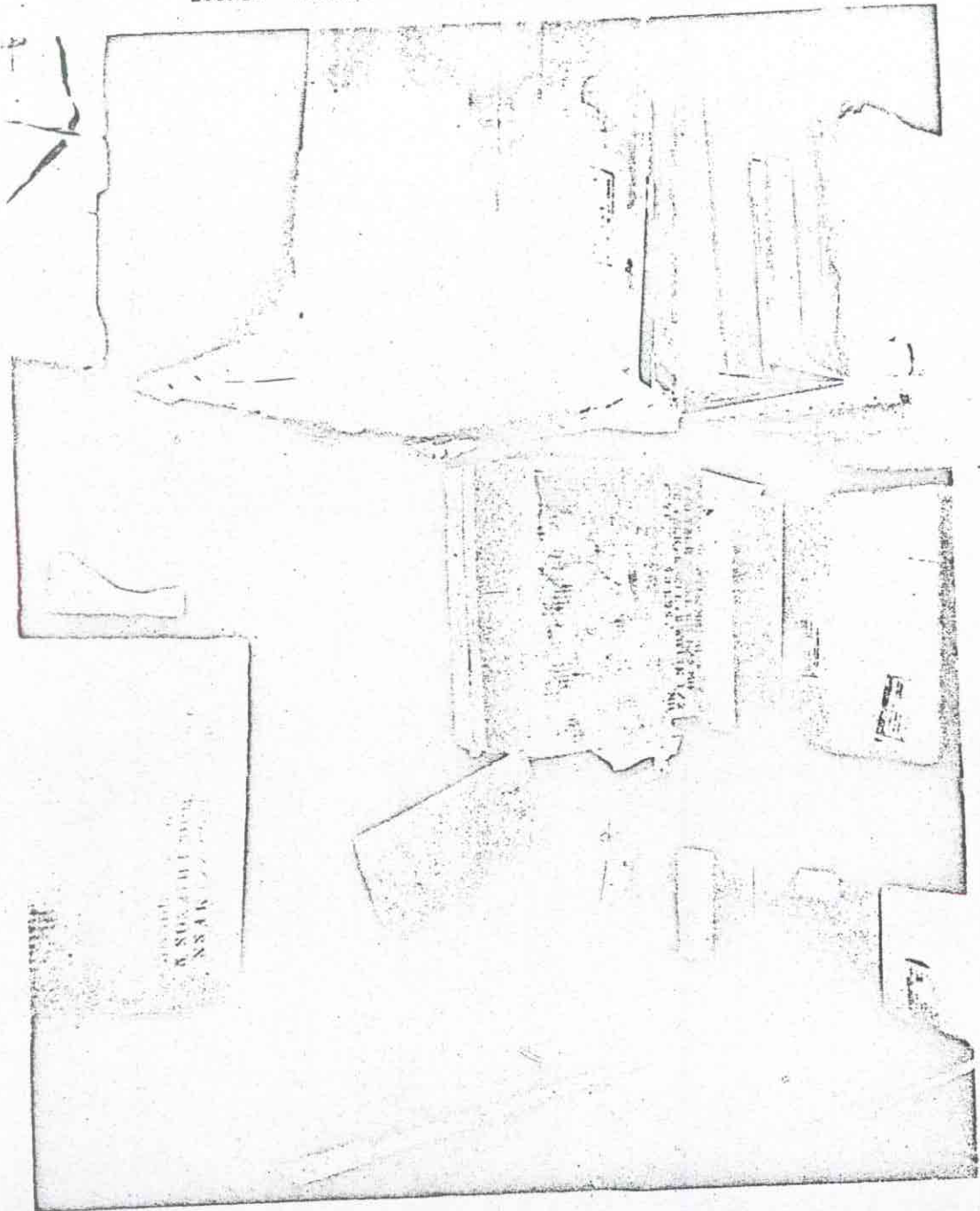
2207
1000 272 WYAN
HOBE FRIENDS &
111 N. CHURCH

NO. 22
6th FLOOR 411 ELM
TAKEN IN 7th AISLE FROM HOUSTON STREET,
WEST OF THE WEST SIDE OF THE BLDG. LOOKING TOWARDS CURB



6th FLOOR 411 ELM
DUPLICATE SHOTS OF PICTURE # 22

6th FLOOR 411 ELM
TAKEN FROM WEST WALL OF BLDG.
LOOKING TOWARDS BOXES WHERE GUN WAS FOUND



6th FLOOR 411 ELM
GUN FOUND BEHIND BOXES THAT ARE TAPED
TAKEN LOOKING SOUTH IN THE 7th AISLE NEAR STAIRWAY LEADING TO 5th FLOOR

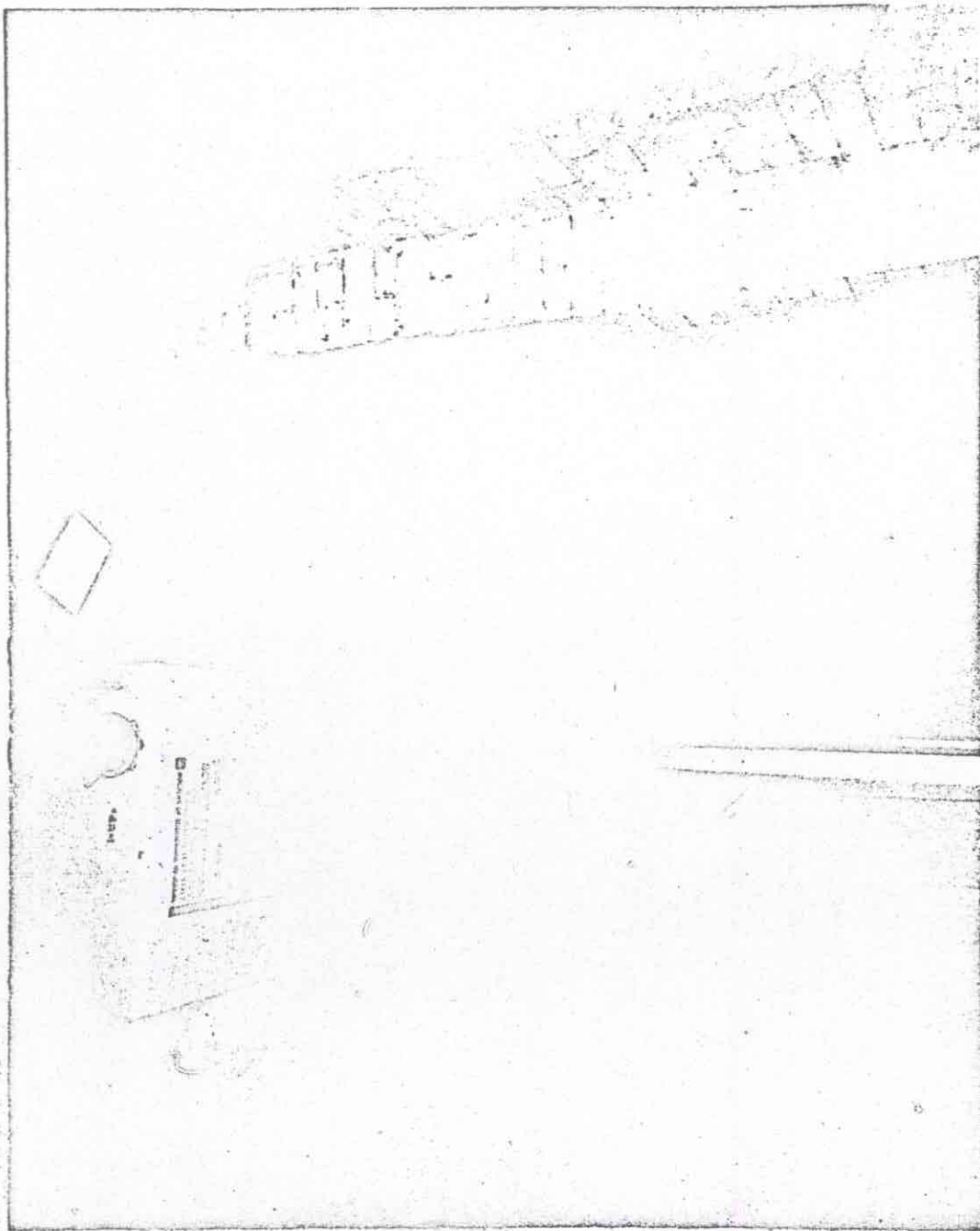


DOCS
FBI
LABORATORY
SERIALS
SECTION

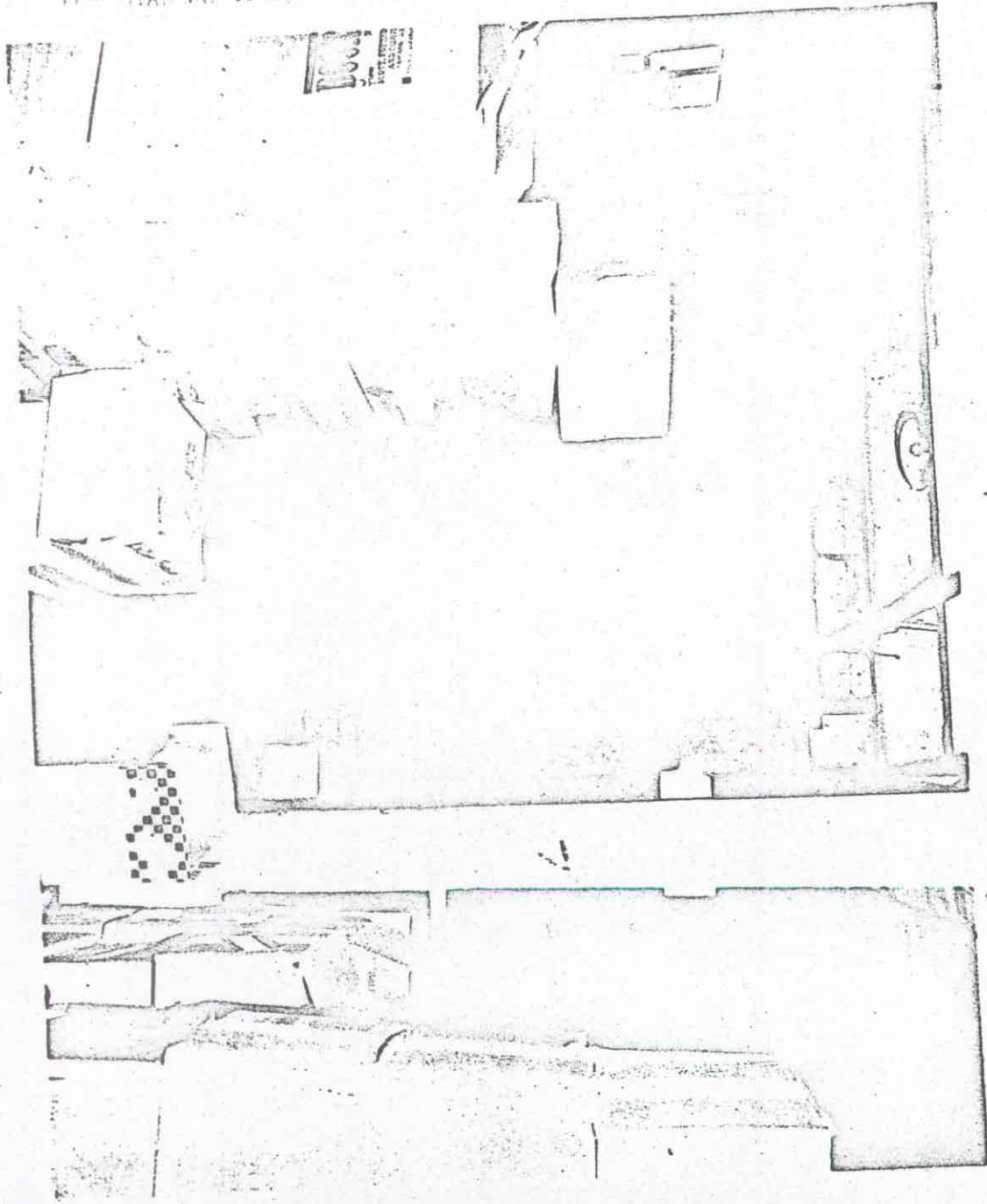
6th FLOOR 411 ELM
LOOKING DOWN STAIRWAY TO FIFTH FLOOR



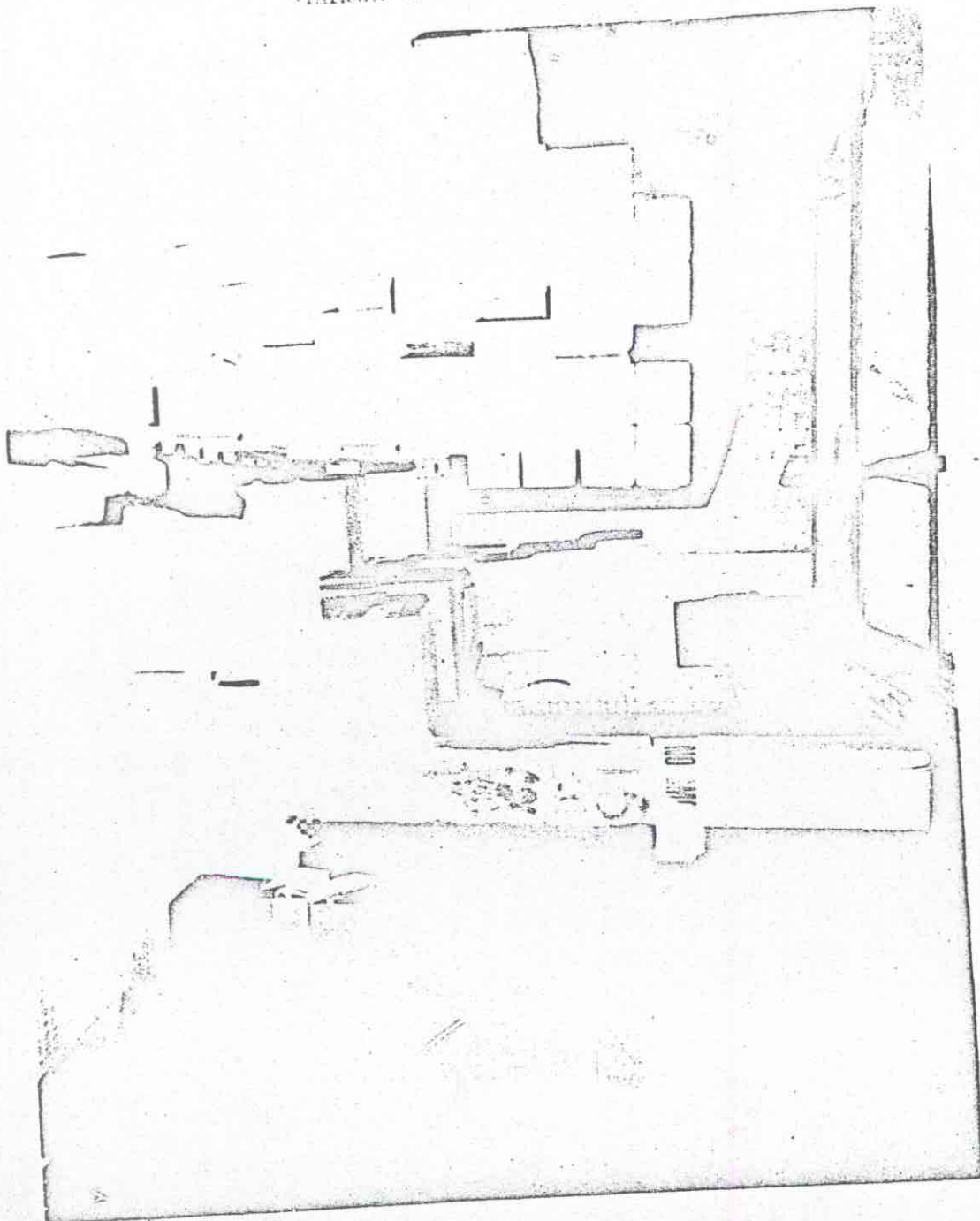
6th FLOOR 411 ELM
LOOKING DOWN STAIRWAY TO 5th FLOOR
GUN FOUND LOWER RIGHT CORNER OF PICTURE



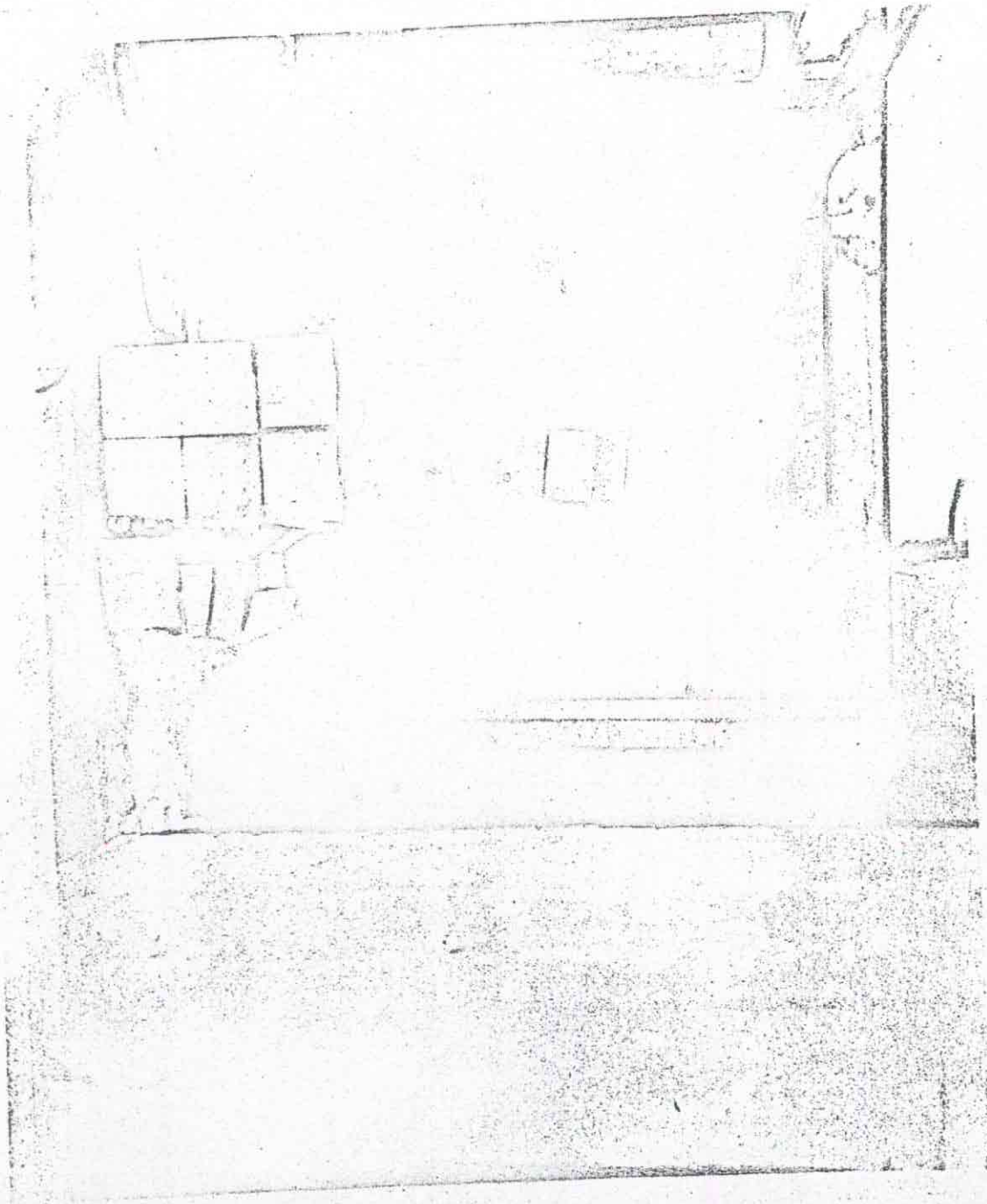
6th FLOOR 411 ELM
FROM STAIRWAY TO 5th FLOOR LOOKING TOWARDS SERVICE ELEVATOR

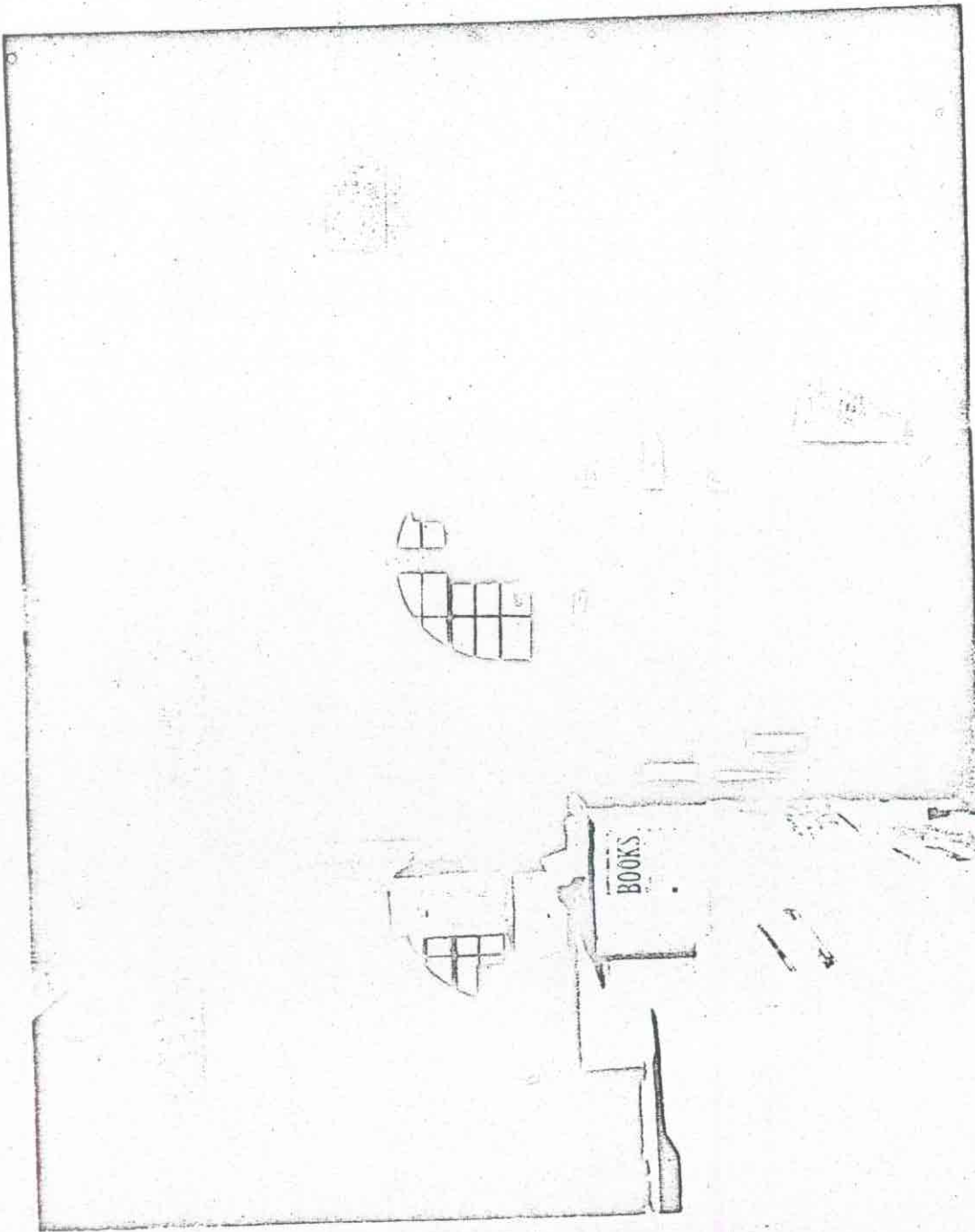


6th FLOOR 411 ELM
FROM 5th FLOOR FROM HOUSTON LOOKING WEST
AND DOWN BEHIND BOXES IN CENTER OF PICTURE
STAIRWAY TO 5th FLOOR

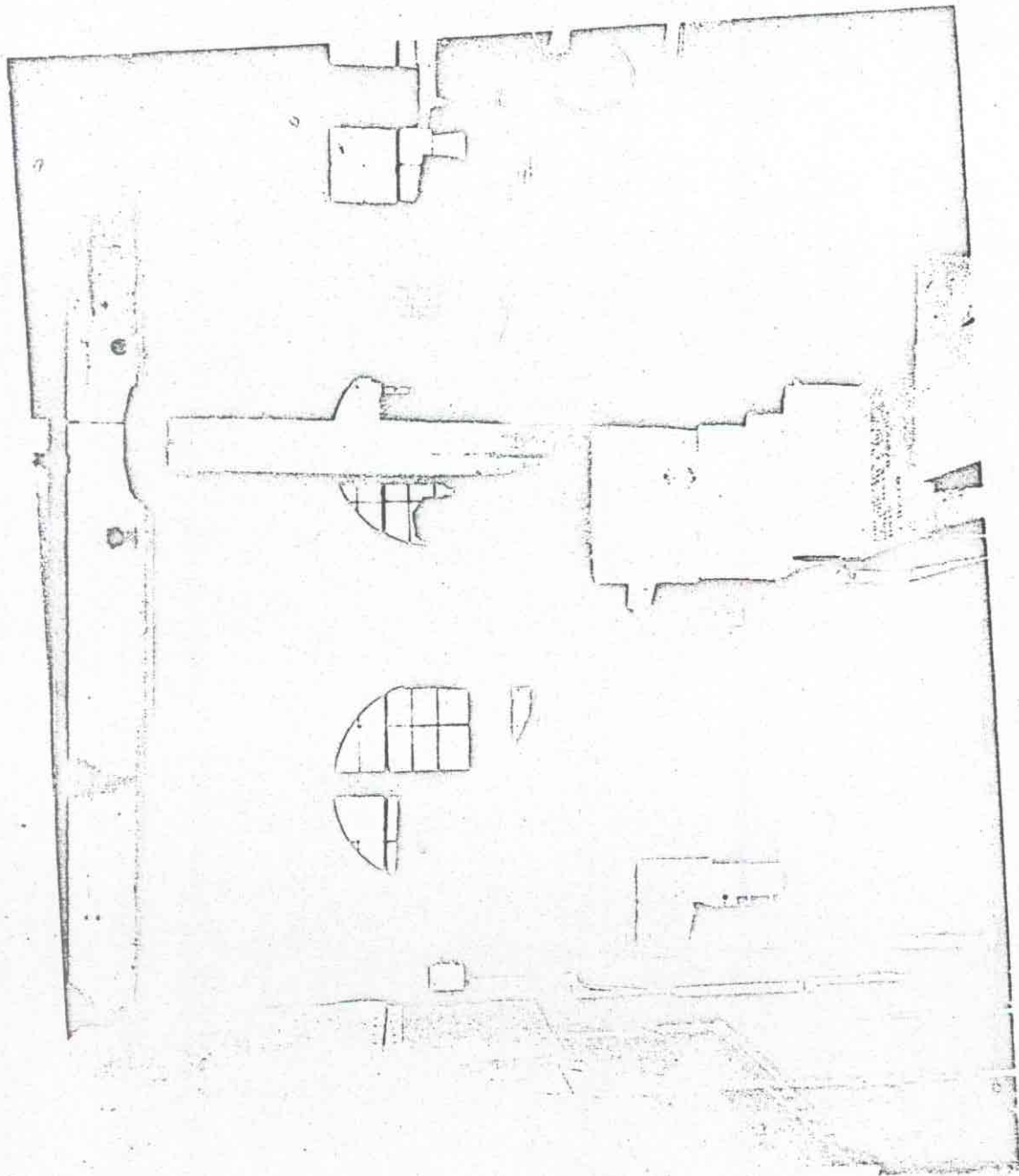


6th FLOOR 821 PLM
TAKEN FROM THE 7th FLOOR FROM HOUSTON STREET
TOWARDS WINDOW WHERE SHOTS WERE FIRED,
FROM FRONT OF BLDG.





6th FLOOR 411 1/2
TAKEN 45 FT. FROM FRONT OF BLDG.
IN THE 4TH AISLE FROM HOUSTON STREET



6th FLOOR 411 EIM
TAKEN FROM THE 6th AISLE FROM HOUSTON STREET
TOWARDS FRONT OF BLDG. 69 FEET NORTH OF MINNAPOLIS CH
NO SIGNIFICANCE



6th FLOOR 411 ELM
 TAKEN FROM THE 5th AISLE FROM HOUSTON
 TOWARDS STAIRWAY LEADING TO THE FIFTH FLOOR.
 THE POINT BEHIND BOXES IN CENTER OF PICTURE LOOKING WEST.

BEST COPY

AVAILABLE