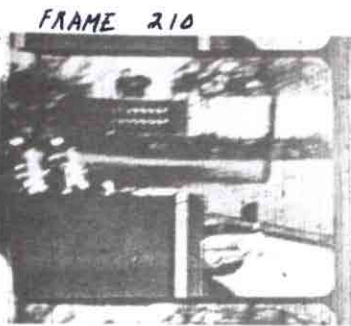
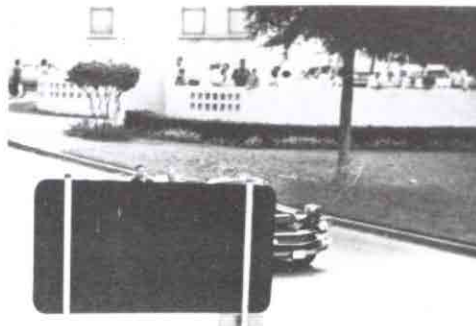


NOTE: SIDE CUT
OFF FROM
SPROCKET HOLES
OVER TO EDGE
OF FILM. THIS
CUTS OFF
WHATEVER WAS
PHOTOGRAPHED
BETWEEN THOSE
SPROCKET HOLES
INCLUDING
CLINT HILL'S
LEFT SHOULDER



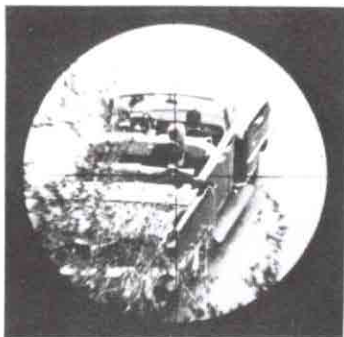
PHOTOGRAPH FROM ZAPRUDER FILM



PHOTOGRAPH FROM RE-ENACTMENT

THIS IS RE-ENACTMENT
PHOTOGRAPH OF
FRAME 208
NOT
FRAME 210

THIS IS FOR
FRAME 208
NOT
FRAME 210



PHOTOGRAPH THROUGH RIFLE SCOPE

DISTANCE TO STATION C	138.9 FT.
DISTANCE TO RIFLE IN WINDOW	176.9 FT.
ANGLE TO RIFLE IN WINDOW	21°34'
DISTANCE TO OVERPASS	348.8 FT.
ANGLE TO OVERPASS	0°22'

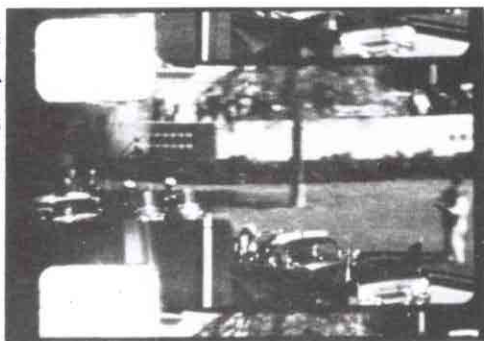
THESE FIGURES
ARE THE SAME AS
THE FIGURES FOR
FRAME 208 ON
ORIGINAL TABULATION
CHART ON PLATAAP.

COMPARE

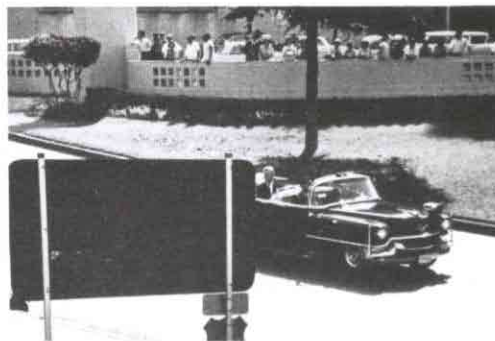
FRAME 210

COMMISSION EXHIBIT 893

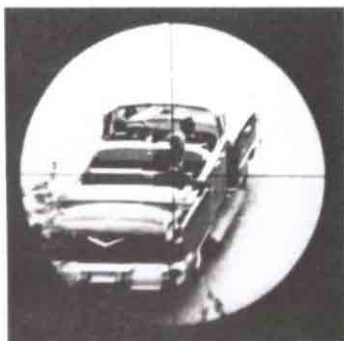
NOTE: SIDE
NOT CUT OFF
FROM SPROCKET
HOLES OVER TO
EDGE OF FILM.



PHOTOGRAPH FROM ZAPRUDER FILM



PHOTOGRAPH FROM RE-ENACTMENT



PHOTOGRAPH THROUGH RIFLE SCOPE

DISTANCE TO STATION C	151.4 FT.
DISTANCE TO RIFLE IN WINDOW	188.6 FT.
ANGLE TO RIFLE IN WINDOW	20°23'
DISTANCE TO OVERPASS	336.4 FT.
ANGLE TO OVERPASS	0°24'

FRAME 222

COMMISSION EXHIBIT 894