

# Antiwar Group Snoops, Lurks at Laird's Home

By Jim Mann

Washington Post staff writer  
Dressed in Sherlock  
Holmes caps, trenchcoats  
and sunglasses, 11 members  
of SANE, an antiwar group,  
snooped, lurked, crept and  
tiptoed yesterday outside  
the Bethesda home of Sec-  
retary of Defense Melvin  
Laird.

They carried tape record-  
ers, cameras, toy telescopes  
and notebooks. They jotted  
down license plate numbers,  
hid behind newspapers and  
pumped neighbors for infor-  
mation.

"You don't know if they  
get any subversive litera-  
ture, do you?" Sanford Gott-  
lieb, executive director of

the Citizens Organization  
for a Sane World, asked by-  
standers.

It was all street theater to  
protest the surveillance of  
peace groups by Army intel-  
ligence.

Laird was at the Pentagon  
during the 40-minute perfor-  
mance, a Defense spokesman  
said. His dog, and several  
persons — apparently mem-  
bers of the family—were ob-  
served inside the house, a  
two-story grey-brick struc-  
ture just south of River  
Road near the Kenwood  
Country Club.

No uniformed police ap-  
peared, and only two plain-  
clothesmen were spotted  
standing watch outside.

For a while, it appeared  
that the protest would turn  
into a form of newsmen's  
solitaire. It was scheduled  
to begin at 11 a.m. and at  
least 15 forewarned report-  
ers and photographers ar-  
rived on time. The demon-  
strators didn't, and the  
photographers began to  
photograph each other.

"They chicken out again!"  
asked 13-year-old Michael  
McCabe, standing two doors  
up the street with his dog.  
Michael and his friends had  
expected a protest at Laird's  
home last summer, but it  
never materialized.

Finally, two cars full of  
protectors appeared, and the  
photographers applauded.

Eleven would-be sleuths  
popped out and placed the  
home under surveillance.

Two of them set up a  
"SANE spy scope" on a  
tripod across the street  
from Laird's home.

"See anything suspicious  
here?" asked Gottlieb, as  
the protesters deployed in  
the street. No one ap-  
proached the Laird's front  
door.

Gottlieb claimed SANE re-  
cently discovered Army in-  
telligence had been using a  
mail "cover" to put itself on  
the SANE mailing list.

The address was R. Allan  
Lee Associates, Box 922,  
Alexandria, Va. Its subscrip-  
tion had not been paid for

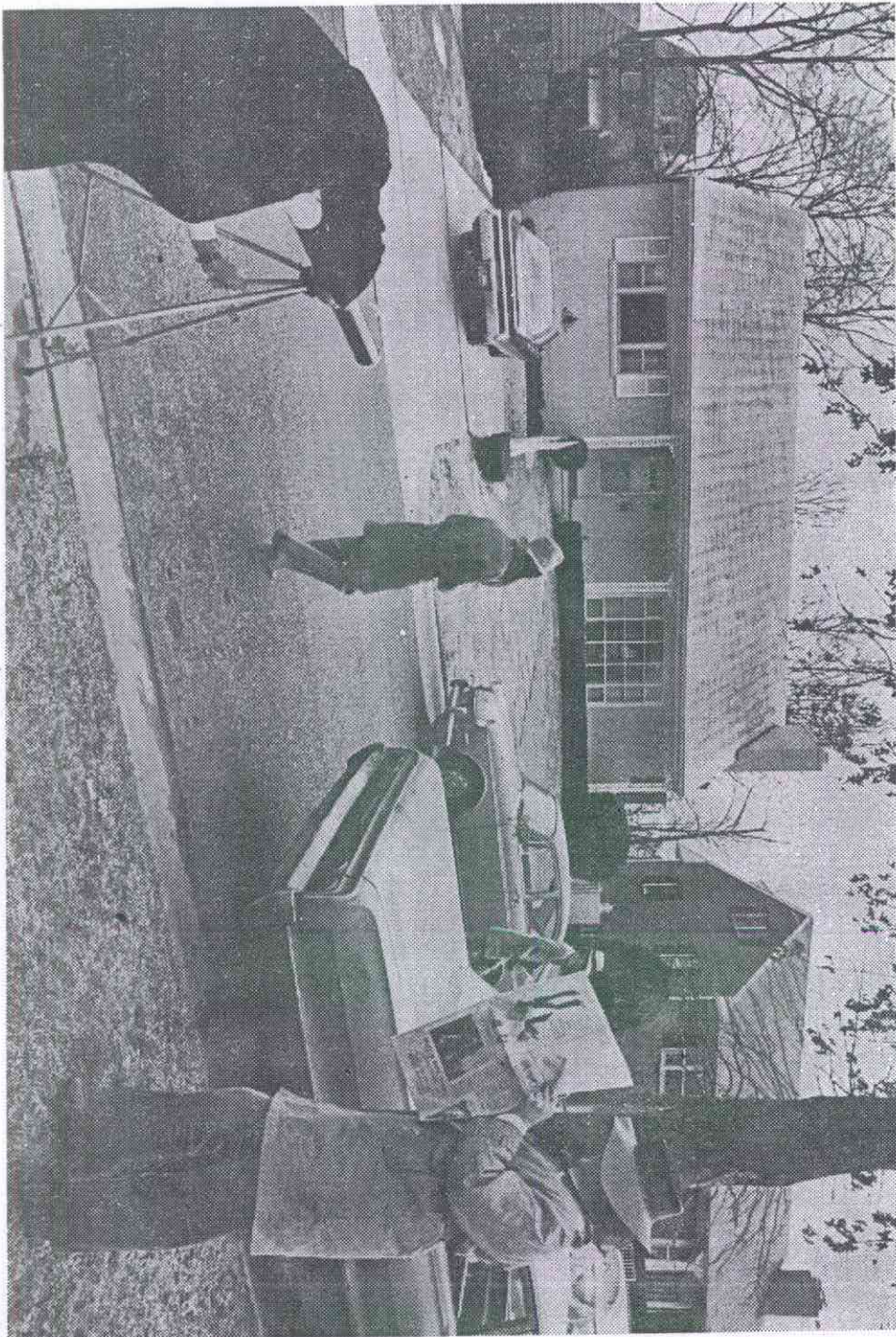
two years, according to  
SANE.

Gottlieb said that Ralph  
Stein, the former head of  
the "radical desk" in the  
Army's counterintelligence  
analysis branch, has admit-  
ted to SANE that he person-  
ally signed up as R. Allan  
Lee.

Stein could not be reached  
for confirmation yesterday,  
and the Pentagon said it could  
not obtain information to re-  
spond to the allegation until  
today. In December, Laird  
ordered a shake-up of military  
intelligence personnel after it  
was charged that they were  
spying on domestic peace  
groups and black militants.



TUESDAY, FEBRUARY 16, 1971



Members of SANE go through a cloak-and-dagger routine in front of Defense Secretary Melvin Laird's home in Bethesda.

Associated Press