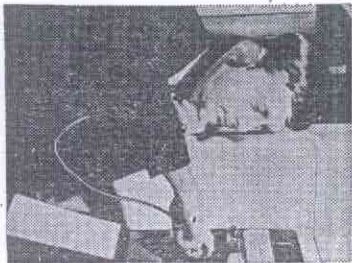


Here's the States-Item team that covers

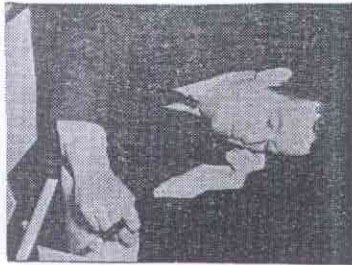
# THE TRIAL



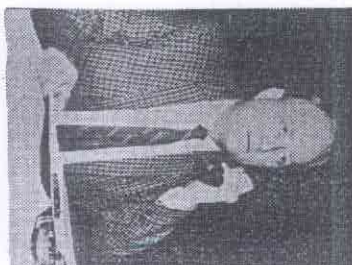
**BERT HYDE**  
Trial Reporter



**EDWARD J. LEPOMA**  
Trial Reporter



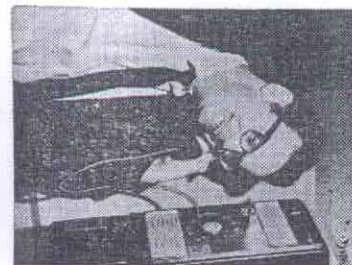
**JACK DEMPSEY**  
Trial Reporter



**KERMIT A. TARLETON**  
Trial Reporter



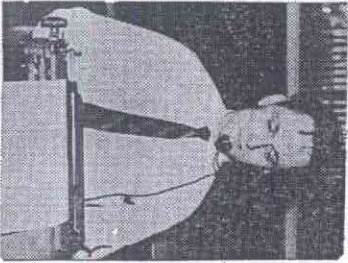
**ALLAN L. KATZ**  
Trial Reporter



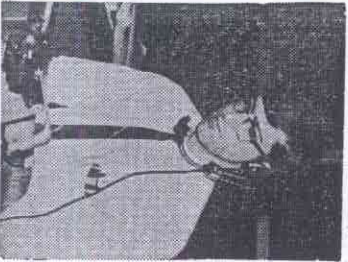
**DAVID E. SNYDER**  
Trial Reporter



**PATRICIA GORMIN**  
Relay Rewrite



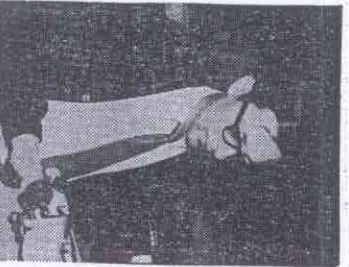
**WAYNE M. KNABB**  
Relay Rewrite



**GEOFFREY BROWN**  
Relay Rewrite



**JACK D. WARDLAW**  
Relay Rewrite



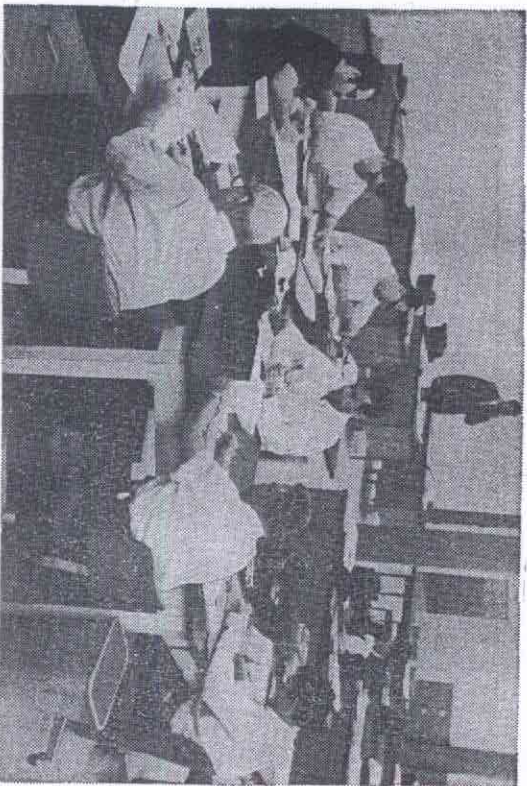
**WILLIAM U. MADDEN**  
Relay Rewrite

Accurate and detailed coverage of the trial of Clay L. Shaw moves, courtroom to printed page, with a speed and volume that has impressed experts. Dramatic news stories reach States-Item readers daily and on the same day developments occur.

How do we do it? By assigning eleven talented, alert and experienced reporters to the trial, we have formed a news team of extraordinary capability. The all-pro team utilizes time saving strategy to speed the reports to the presses. During the trial three reporters are within the courtroom while an alternate trio outside phones to the States-Item's 3-member relay rewrite group. Then, when relay rewrite has received reports, the alternate trio replaces the three reporters in the courtroom and these, in turn, dictate their reports to relay rewrite. Thus the trial proceedings are covered constantly. Rewrite develops the detailed material further and reporter Jack D. Wardlaw forms it into the continuing story of the trial. Meanwhile, William U. Madden writes background, side stories, and adds important color to the coverage.

The exacting demands and fierce time pressures such coverage as this imposes call for exceptional natural and professional ability on the part of each team member.

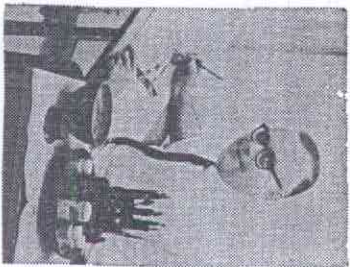
States-Item readers enjoy the most rapid in-depth coverage of the trial available anywhere. This superb coverage is the reason why many individuals throughout the Nation have subscribed for mail delivery of the States-Item for the duration of the trial.



**Newsmen of the States-Item Copy Desk** toil with professional briskness to edit the astonishing bulk of news material that is amassed daily during the trial. The clock is their demanding taskmaster and relentlessly slashes their allotted time for work completion down to minutes . . . then seconds! But they meet the deadlines day after day. Because they do, States-Item readers get the most news **FIRST**.

## STATES-ITEM ARTISTS SKETCH THE TRIAL

The talents of Editorial Cartoonist Ralph Vinson and Staff Artist Louis Benedic produce scenes of the courtroom and sketches of the trial participants for States-Item readers. They make their sketches in the courtroom during the trial, thus their work attains an added value to the viewer. No photographs may be taken of the trial. But States-Item readers **DO** get to see how it is.



**RALPH VINSON**  
Trial Sketches



**LOUIS F. BENEDIC**  
Trial Sketches

## PHOTOGRAPHERS TOO ARE THERE

Although photographs may not be taken of the actual trial, The States-Item assigns one or more photographers to the front of the Criminal Courts Building on Tulane Ave. whenever the trial is in session. Thus whatever may occur, of visual interest, outside the building, States-Item readers should see it. States-Item photographers who have served on-the-alert at this site include: Mike Bates, Charles E. Bennett, Roy Blauw, Lee S. Delaune, Kenneth Flint, Philip Guarisco, Vernon Guidry, James W. Guillot, Pierre Hughes, Horace J. Patterson, James N. Pitts, Robert Steiner, Ralph Urbe, and Tony Vidacovich. We've published many pictures thus far of the principals and witnesses. Turn to the States-Item daily for more.

# NEW ORLEANS STATES-ITEM