

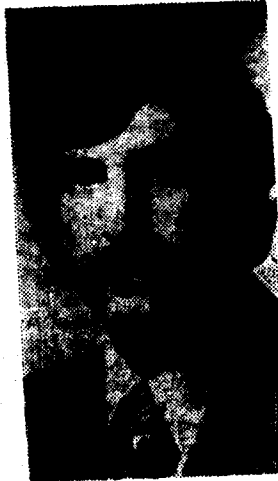
Winsberg Sees His Victory As a Defeat for Jim Garrison

By FERREL GUILLORY

Jerome M. Winsberg says his victory in the race for a seat in Criminal District Court may well lessen Dist. Atty. Jim Garrison's influence in the future.

"I think it will indicate to people that he (Garrison) is fallible, flesh and blood," said Winsberg in an interview yesterday. "I feel that he will have less clout in the future."

Winsberg defeated incumbent James L. Alcock, who had been an assistant DA under Garrison. Alcock was appointed to the bench by Gov. John J. McKeithen, after Garrison reportedly asked for the appointment.



JEROME M. WINSBERG

GARRISON IS said to have figured in the election or appointment of six of the present Criminal Court judges.

The results of Saturday's voting for judge are

Winsberg	72,128
Alcock	68,115

Winsberg said his victory may serve to diminish his (Garrison's) hold over the

Criminal District Court." Mayor Moon Landrieu had endorsed Winsberg.

THE MAYOR'S endorsement, said Winsberg, "was by

far the best endorsement I had... Without it, I couldn't have won."

During the campaign, Alcock frequently noted that Winsberg is the law partner of City Commissioner Eddy L. Sa-

Winsberg asserted that he must, by law, sever his relationship with the law firm. "I won't be Eddie Sapiro's law partner," he said.

Winsberg said that he, not Sapiro, made the decision to enter the race for judge.

NOTING THAT he had campaigned in favor of rehabilitation for those convicted, the judge-elect indicated he would take an activist role.

"I believe," he said, "in 1971 a judge has to be more than just a judge. He has to branch out, to have a social conscience."

The term of Winsberg's seat—Division C—expires at the end of 1972. Winsberg said he plans to run for re-election.

Ward Vote on Judge

(Copyright, 1971, by The Times-Picayune Publishing Corporation)

JUDGE DIVISION "C"

	Alcock	Winsberg
Ward 1	525	778
Ward 2	826	1535
Ward 3	2864	1939
Ward 4	7084	3878
Ward 5	3163	2569
Ward 6	1140	1574
Ward 7	8615	9094
Ward 8	6586	4866
Ward 9	12038	13498
Ward 10	1010	2177
Ward 11	2018	4307
Ward 12	2352	4008
Ward 13	2093	4337
Ward 14	5019	5527
Ward 15	6535	4877
Ward 16	1510	1910
Ward 17	4736	5193
Total	68115	72128