

842

9

F47

vol. 20

20

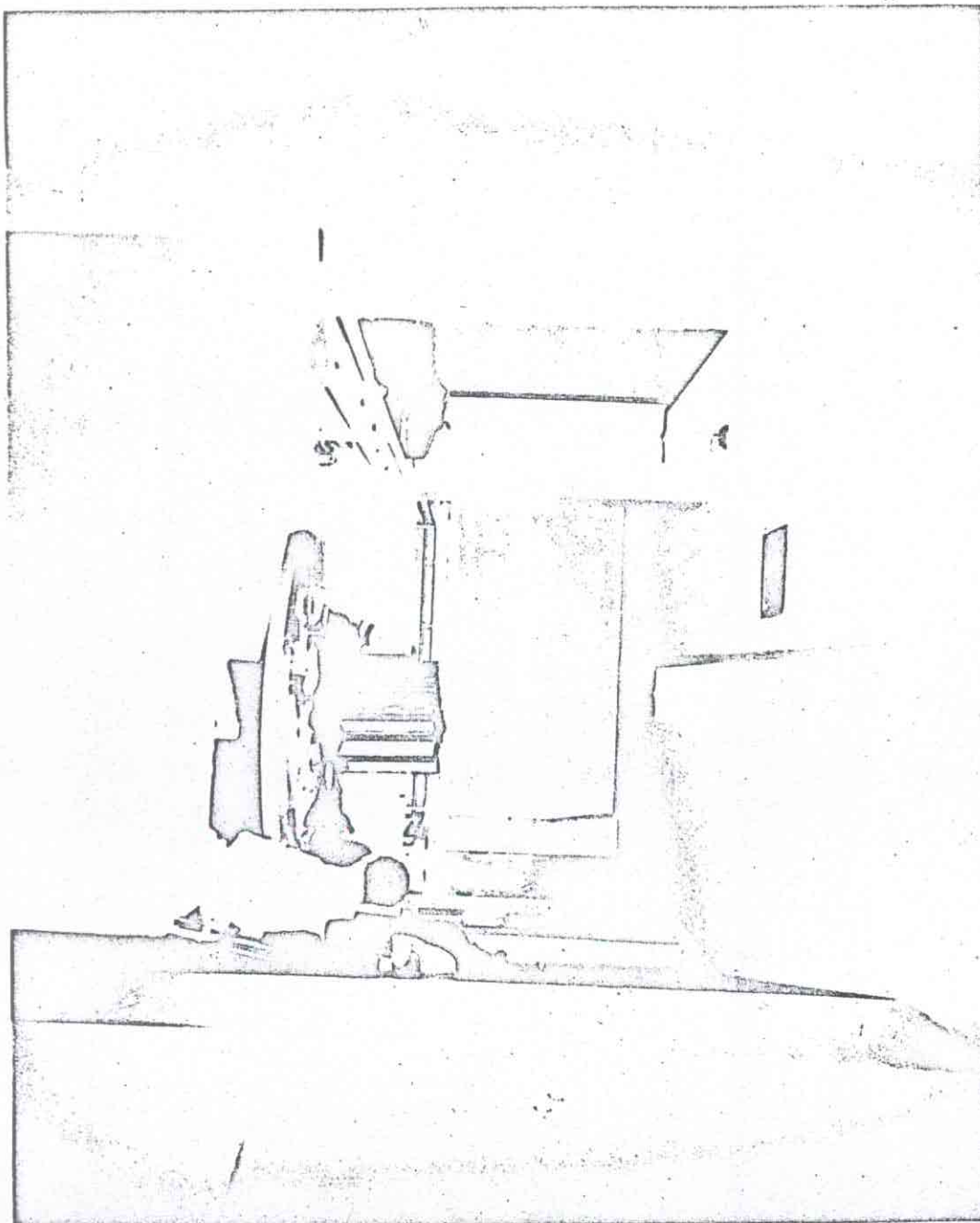
PHOTOGRAPHS
CITY HALL BASEMENT
(LEE HARVEY OSWALD)

Handwritten notes, possibly describing a scene or investigation.

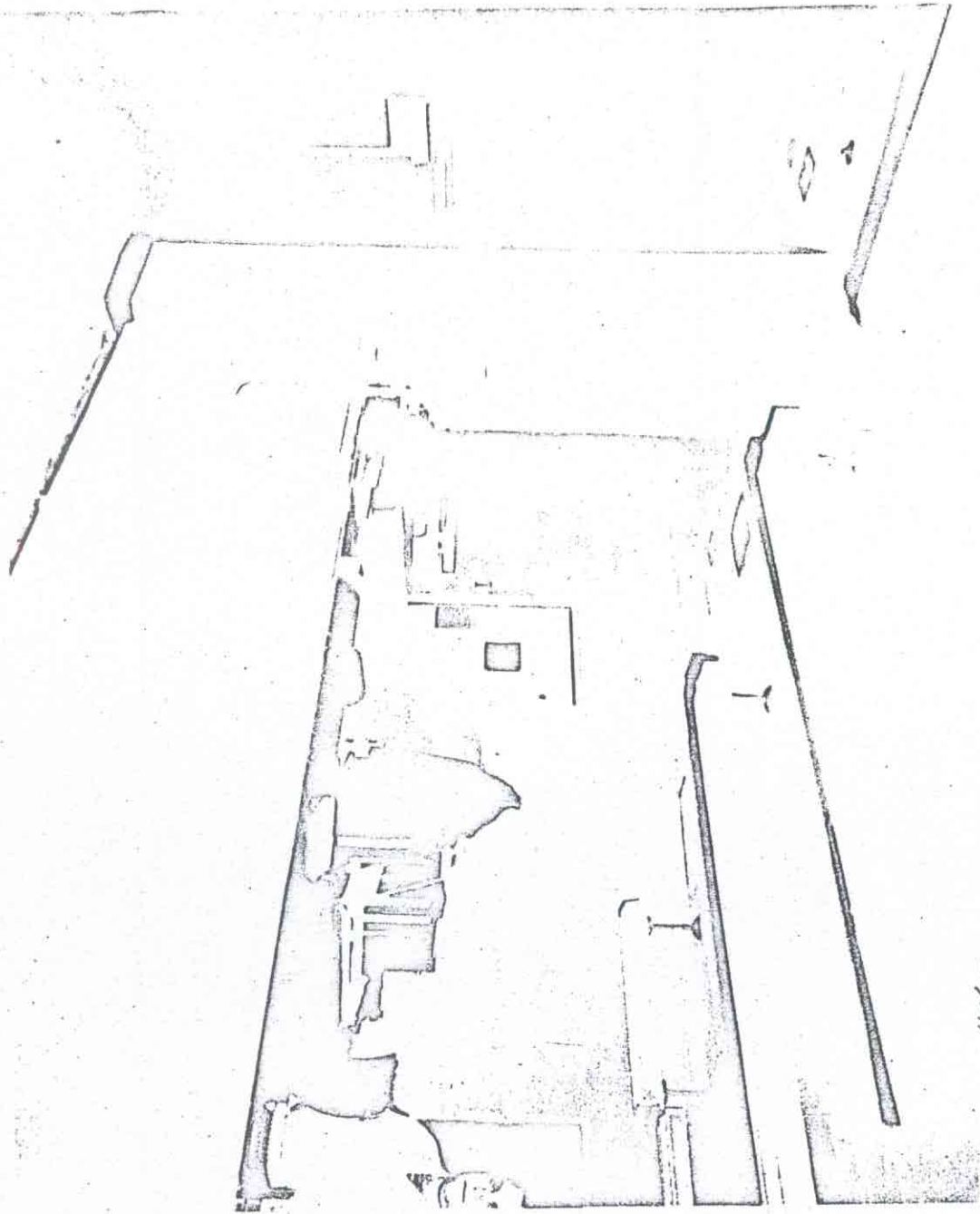
↓ - JUN 20
Copy 1960

11-76-63

VIEW EAST FROM FRONT OF RAIL ELEVATOR

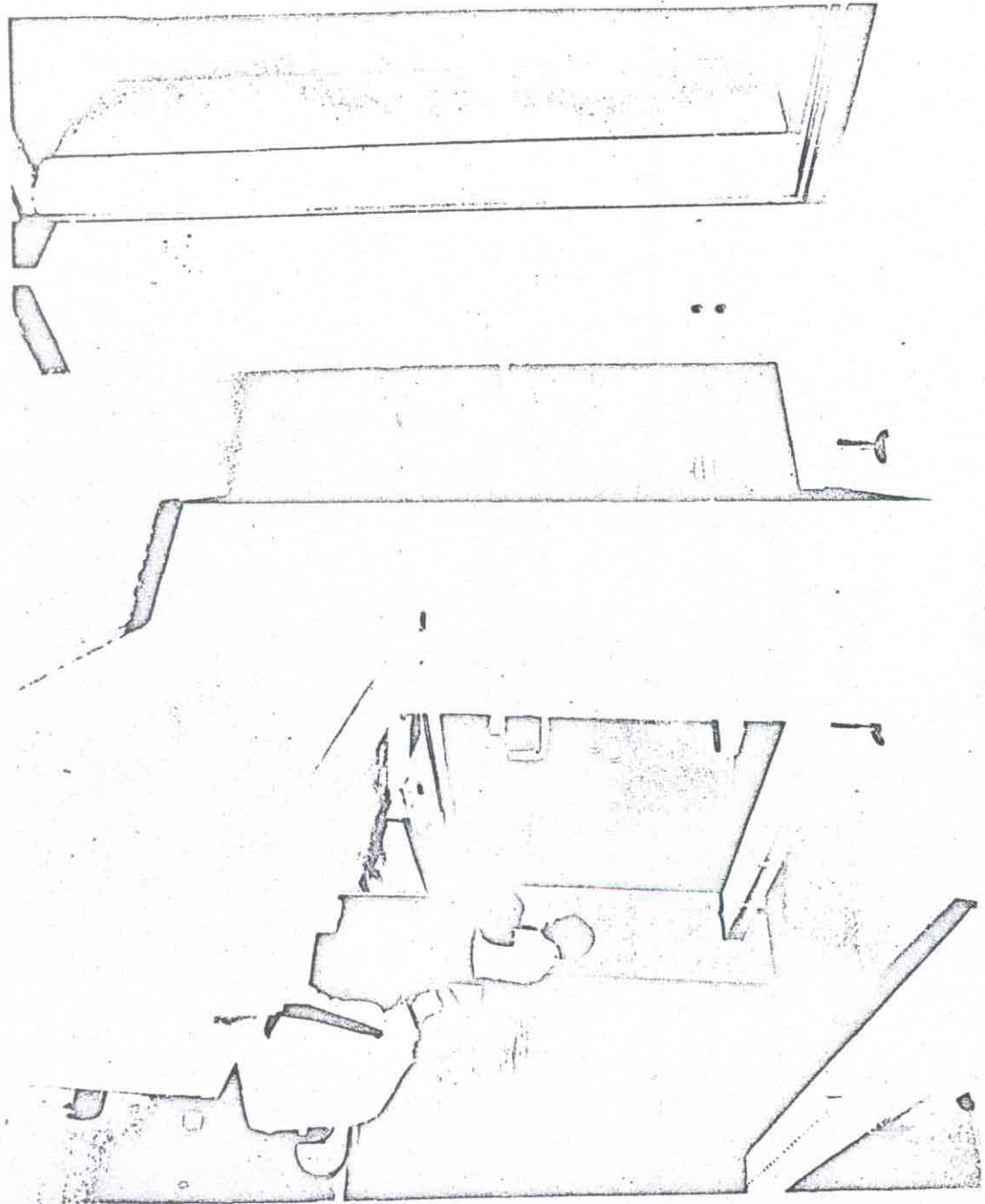


WALL DESIGN SHOWING SOUTH EAST LOOP

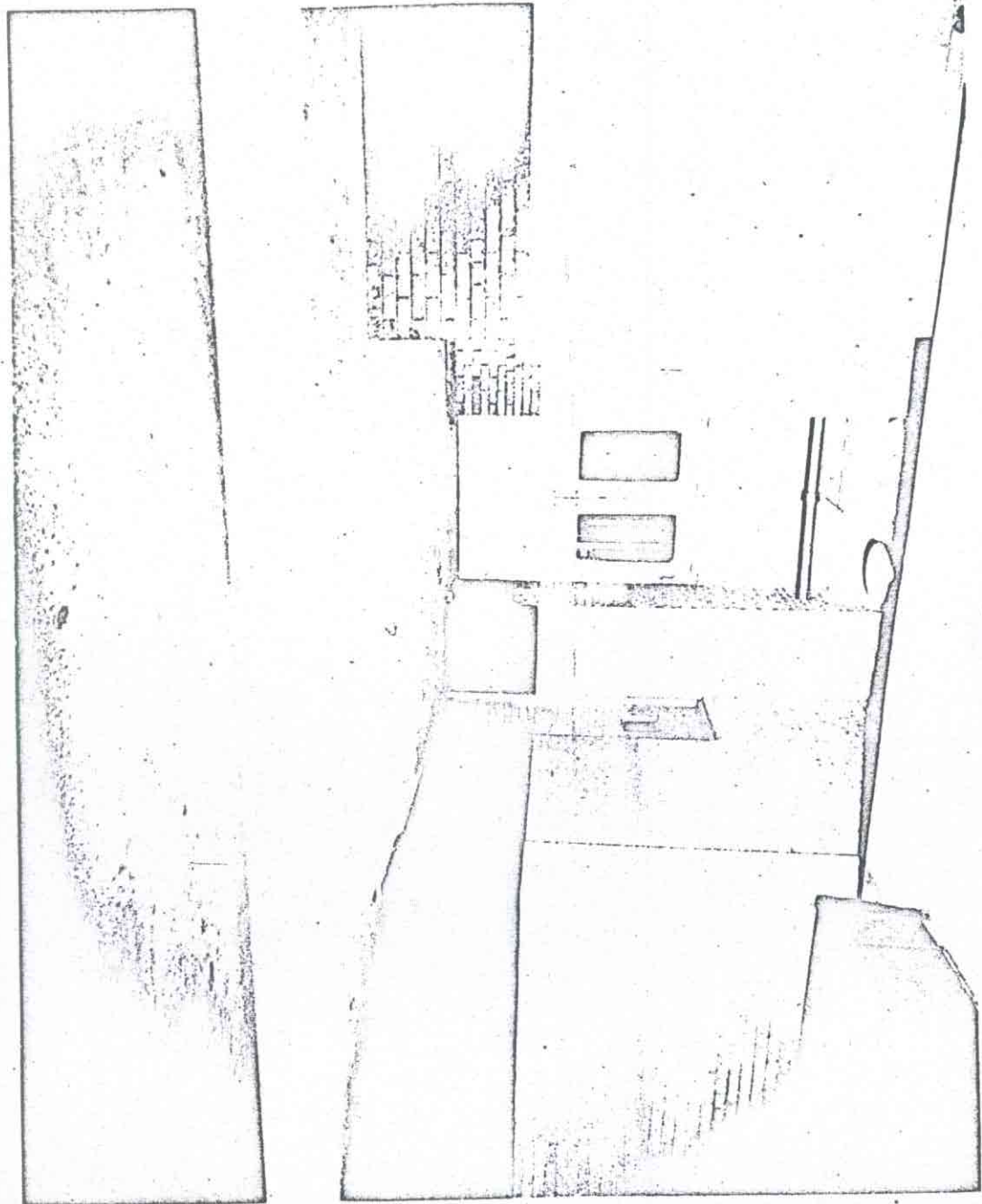


11/1/20

JAIL OFFICE SHOWING ELEVATOR DOOR



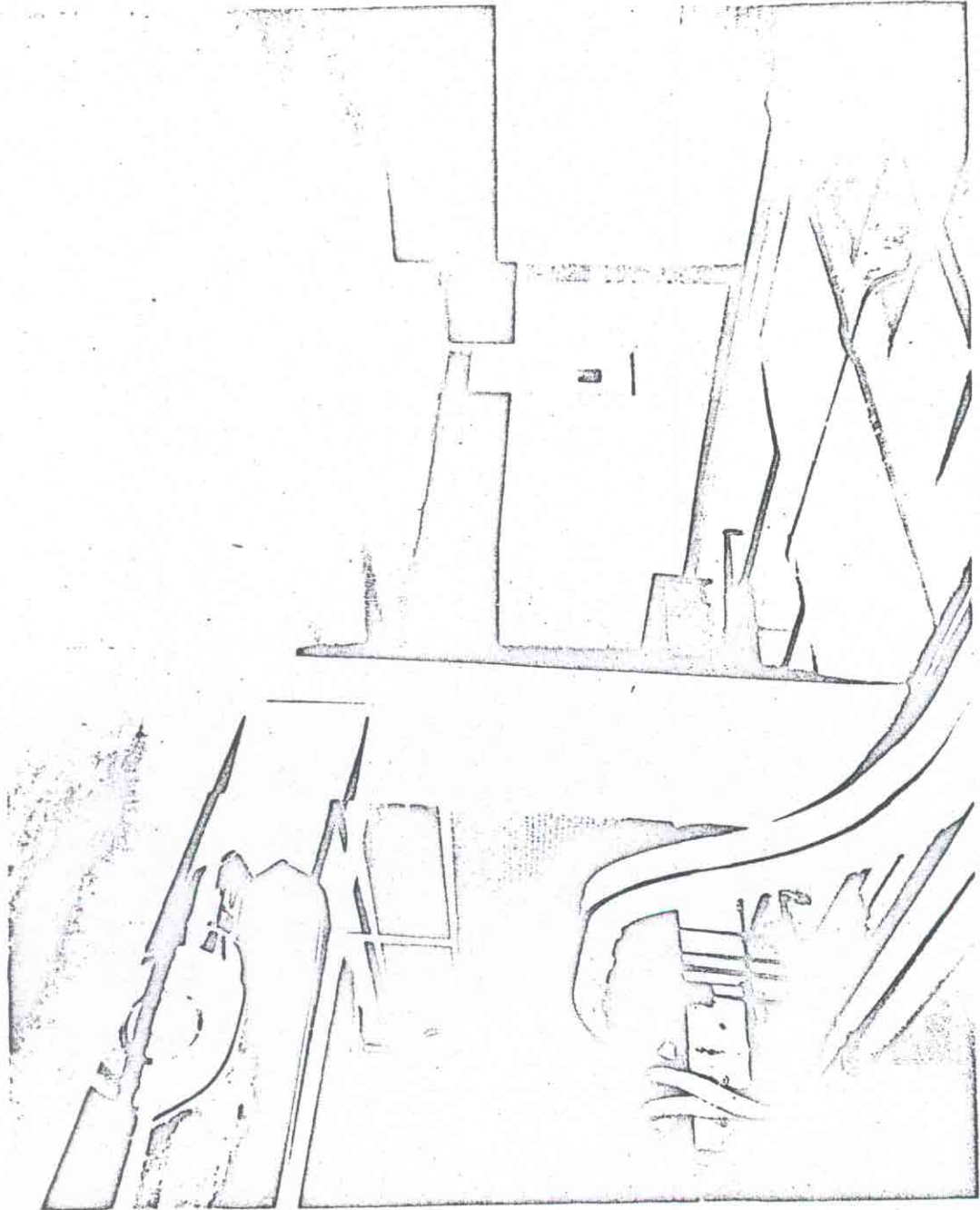
11-25-63
CITY HALL BASEMENT SHOWING SOUTH EAST DOOR
TO JAIL AND DOORS TO BASEMENT LOBBY



11-10-43
U.S. AIR FORCE
1000 HALL, WASHINGTON



THE CITY OF NEW YORK
OFFICE OF THE COMMISSIONER OF THE DEPARTMENT OF SOCIAL SERVICES
100 WEST STREET, NEW YORK, N. Y.



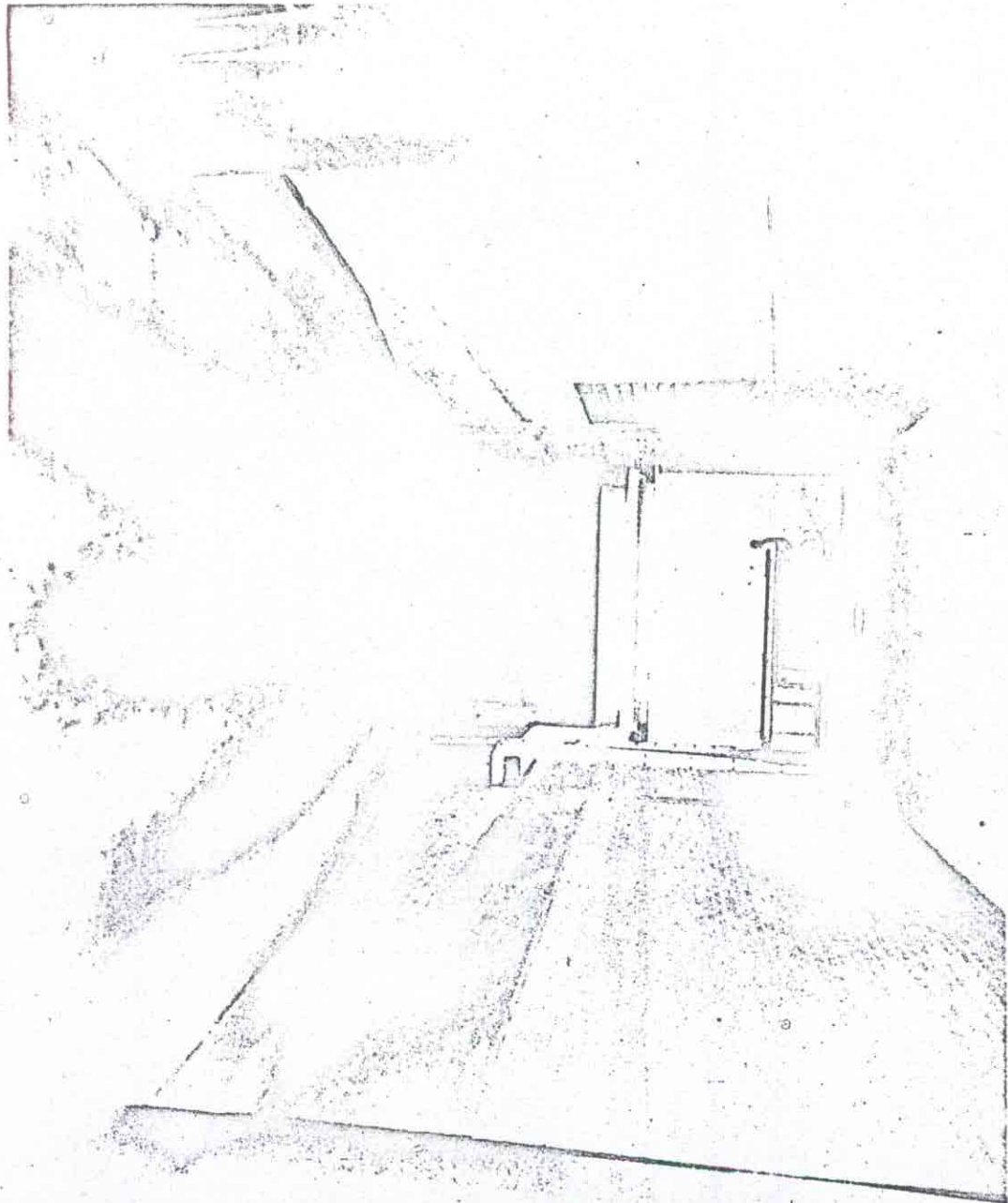
CITY HALL BATHROOM LEADING SOUTH EAST DOOR TO JAIL OFFICE



VIEW OF THE HALL TAKEN FROM DRAWING AREA
LOOKING SOUTH EAST TOWARDS JAIL OFFICE
AND PART OF MAIN STREET BAY



CITY HALL BASEMENT TAKEN FROM COMMERCE STREET
EXIT LOOKING NORTH



THE END OF SMALL STREET PAINT
AND THE NEW HALL.

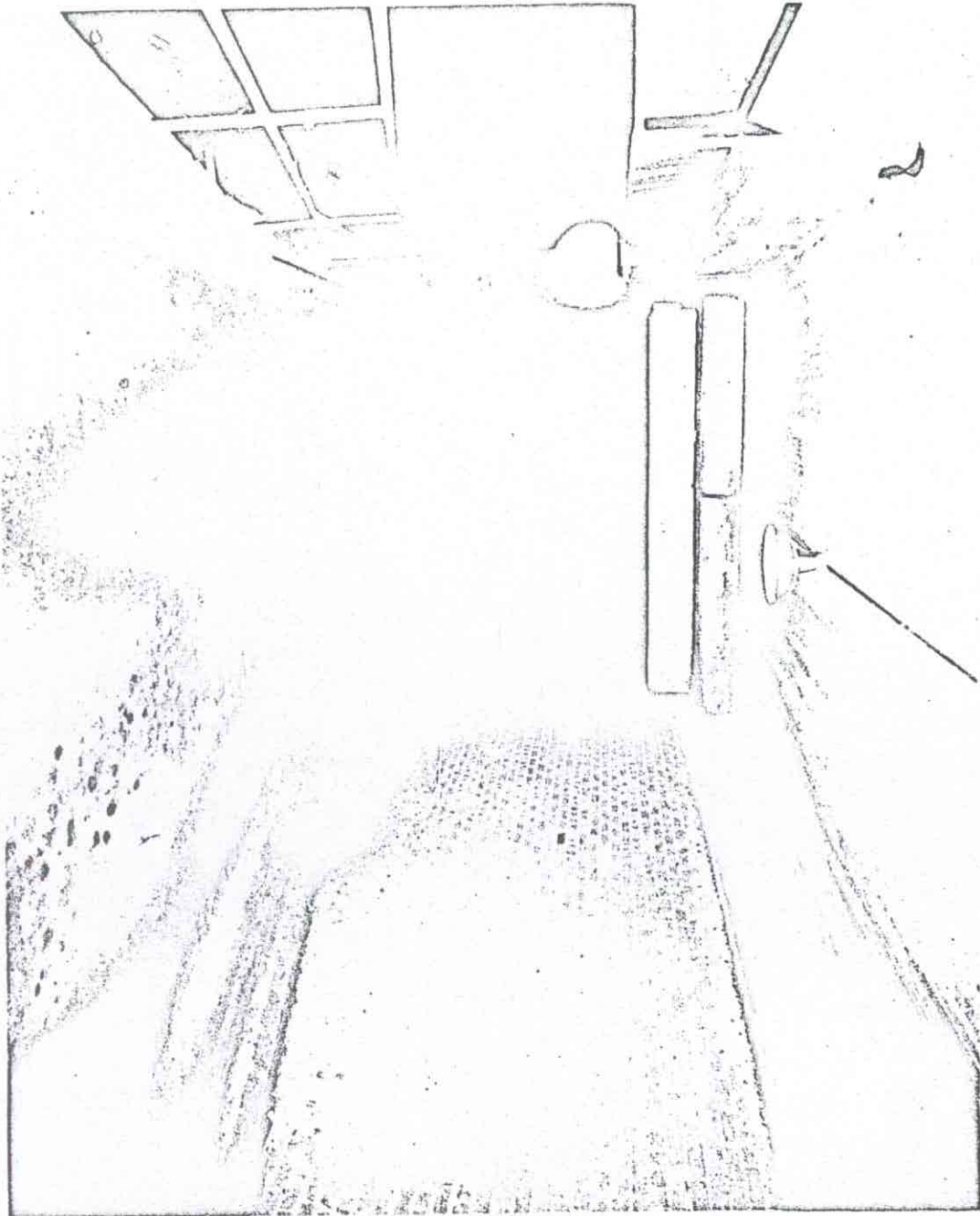
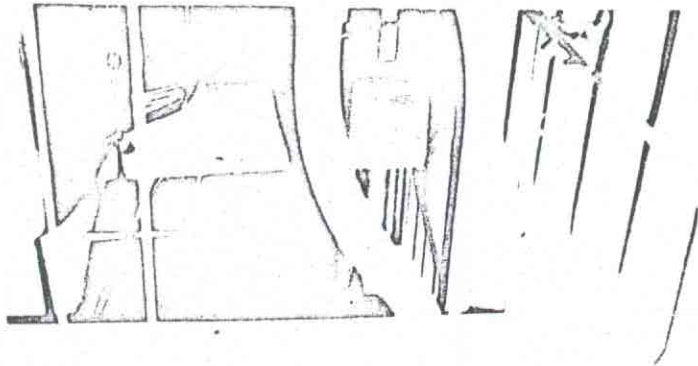
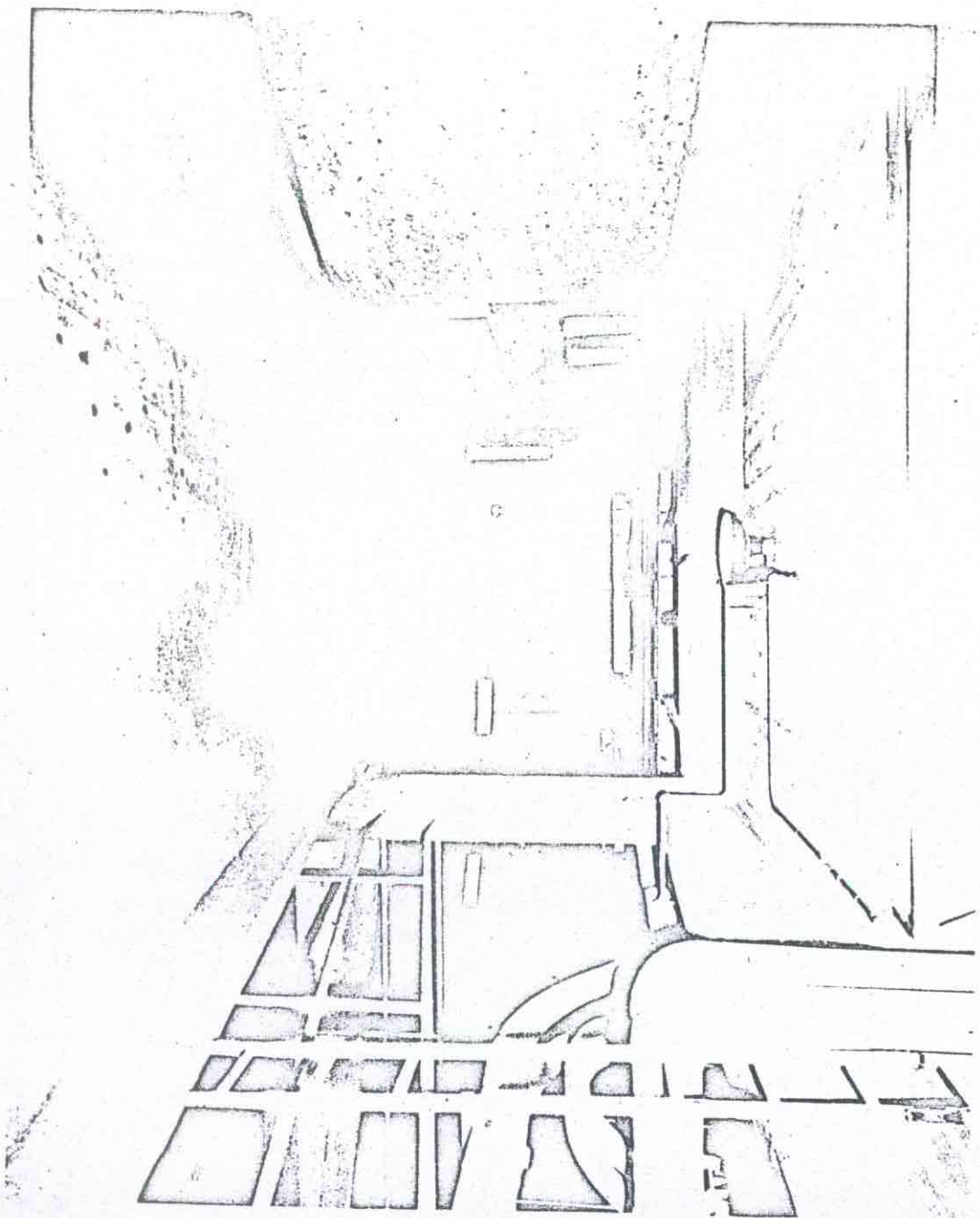


PLATE R



THE WALL REMOVED, THE INTERIOR AREA





BEST COPY

AVAILABLE