

# THE SHOT THAT MISSED

One witness to the assassination of President Kennedy told this writer that shortly after the shooting he observed a woman being taped by a TV camera. He heard her say that she saw a shot fired from the south side of the railroad overpass as the President was killed.

To our knowledge, there is no record that this tape was ever shown on TV. In fact, we have never learned the identity of the woman. The witness did not know her name; but he stayed up all night hoping to see himself on TV.

The bullet mark on the sidewalk referred to in the Mirror last week backs up this woman's claim. In addition to the seared sidewalk, one can see on both the Nix and Zapruder films a young man on the south side of Elm Street "hitting the dirt" after the President had received the fatal head shot.

We tend to think this young man was ducking in response to the sonic boom of a bullet as it passed near his head. We also tend to believe this shot was meant, not for the President who was already dead, but for Clint Hill. Hill, the special Secret Service Agent assigned to Mrs. Kennedy, was a last minute addition to the Dallas trip due to Mrs. Kennedy's insistence that he come.

With Hill's change in status, he may have not been given all the instructions. So Hill, standing on the left fender of the follow-up car, rushed forward to lend a hand when it became obvious help was needed. Agent Ready, standing on the right fender of the follow-up car, obeyed his superior's, Agent Emory P. Roberts, order not to lend assistance.

Hill, moving faster than the automobiles, so he could catch the front car was a difficult target. The shot at Hill was the longest shot of the day, from the south side of Commerce Street, and Hill was traversing the field of fire of the gunman making it the most difficult shot of the day. This shot, in our opinion, was the only shot to miss that day.

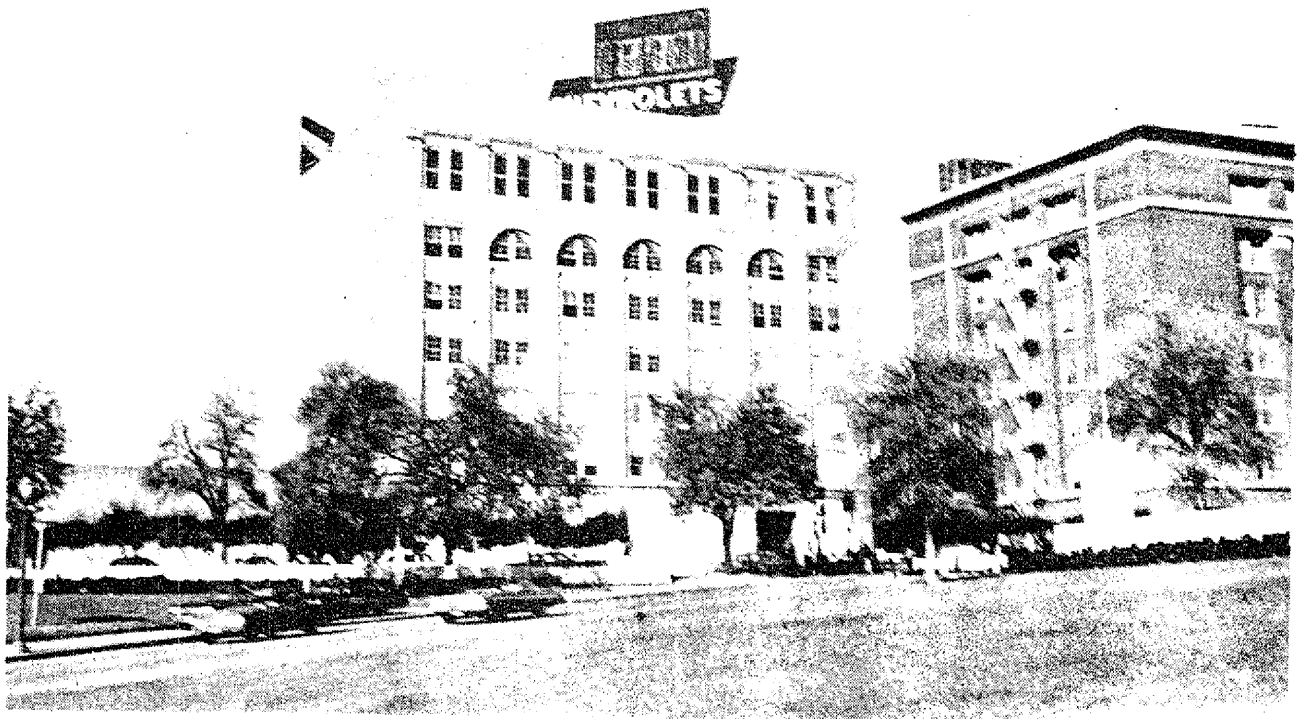
---

THE MIDLOTHIAN MIRROR

---

THURSDAY, DECEMBER 13, 1973

---

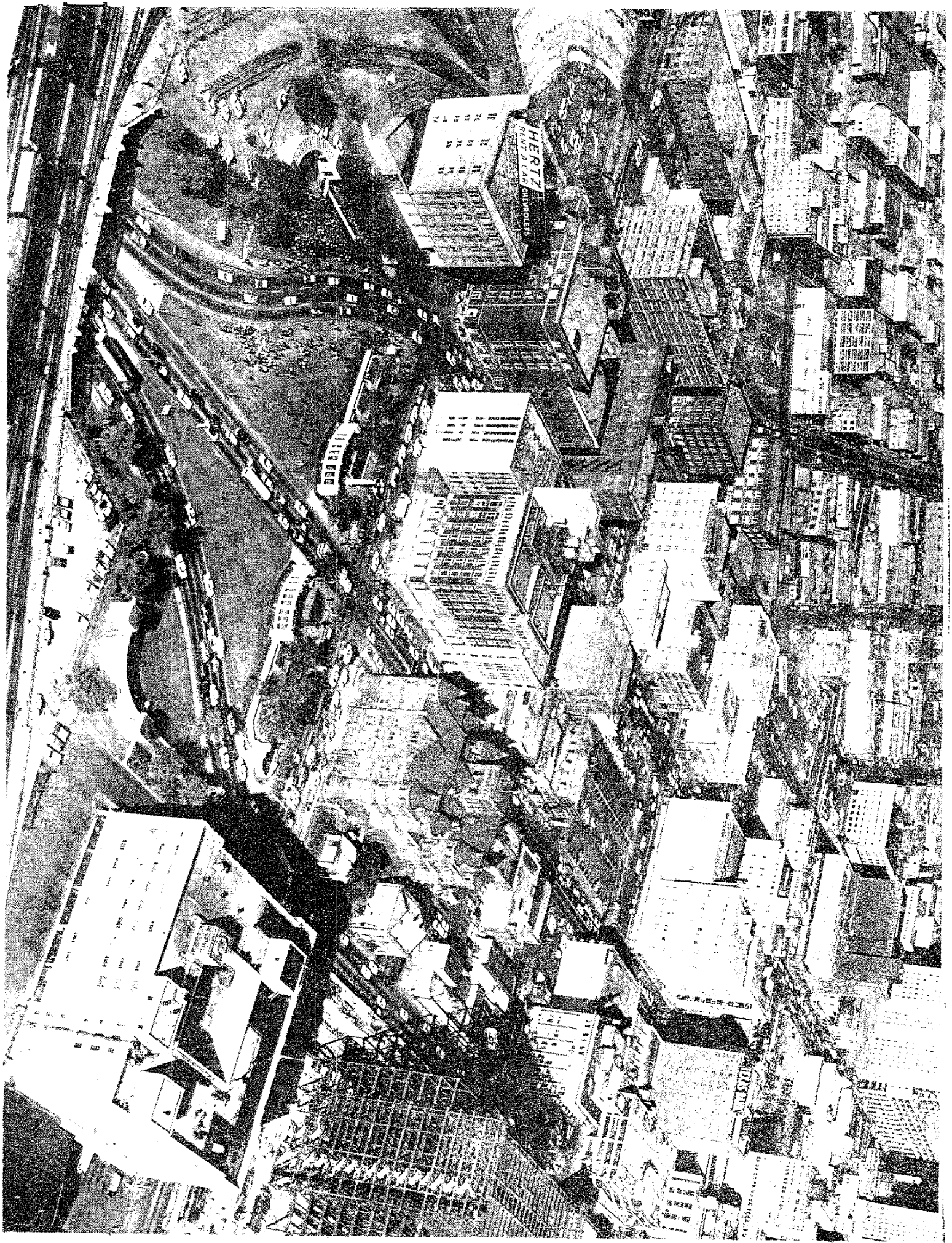


*Shortly after President John F. Kennedy was killed, a man called police officers' attention to a fresh bullet mark on the sidewalk in Dealey Plaza. He told police that the trajectory indicated the bullet was fired from the south side of the railroad overpass.*

*The photos above were taken by Editor Penn Jones that Friday afternoon. The clock seems to be indicating 3:31 p.m.*

*Evidently the police considered the matter significant. As we can see, squad cars were parked on the sidewalk covering the fresh mark.*

*Since it was claimed that Oswald did all of the shooting from the Book Depository building, there was no need to let people stare at a mark which indicated otherwise.*



*This photo was taken by Squire Haskins of Dallas on November 23, 1963. It is still for sale by Haskins of 2014 1/2 Commerce St. at \$10. per copy. It gives a good overall view of the scene at that time. The short piece of railroad track just behind the grassy knoll has been removed. There were more than 30 witnesses working on the steel framework of the new courthouse, at lower left of picture, and none of them were ever called as witnesses.*