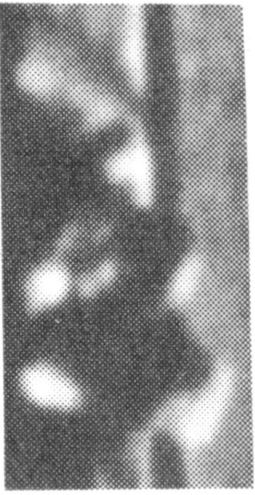
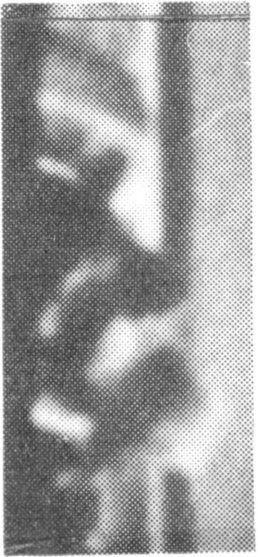


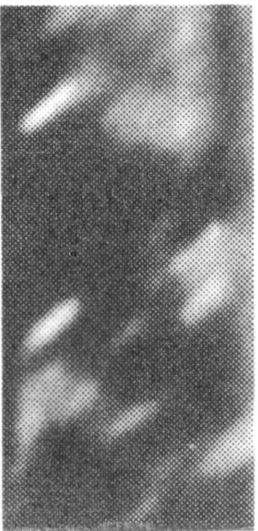
* Study of Fr. 314-315 in vol. XVIII, p. 70-71, shows they were mislabeled and presented in reverse sequence. They are shown here in proper sequence, but labels were kept with same pictures as in vol. XVIII.



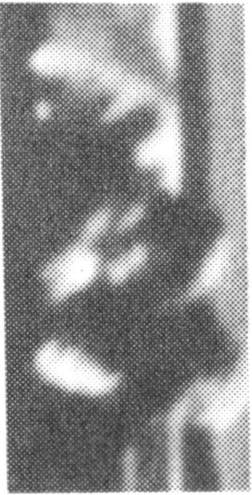
FRAME 310



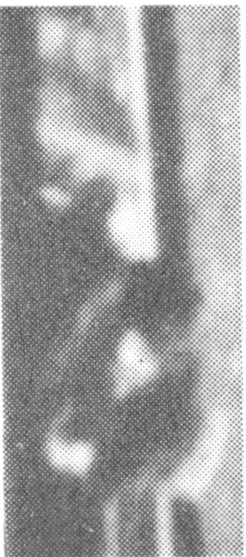
* FRAME 315



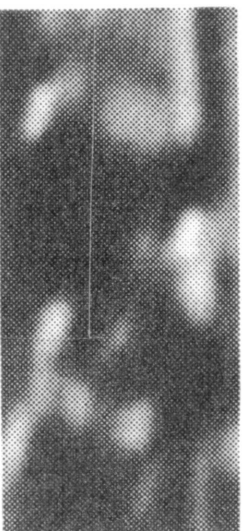
FRAME 318



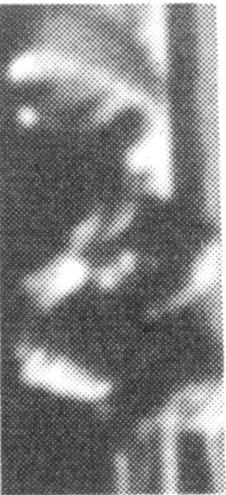
FRAME 311



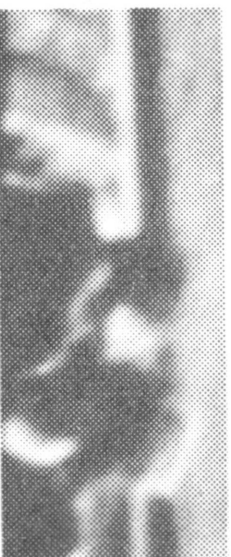
* FRAME 314



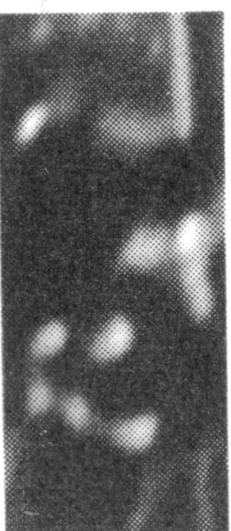
FRAME 319



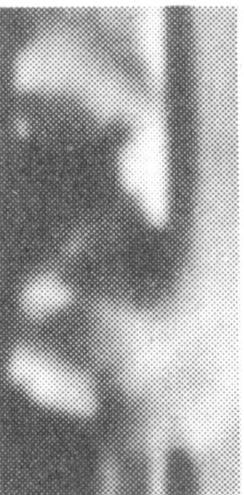
FRAME 312



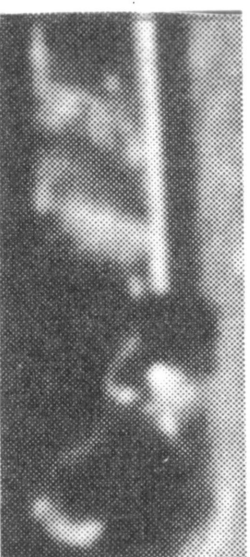
FRAME 316



FRAME 320



FRAME 313



FRAME 317



FRAME 321