

# MONET

CALENDAR 1986

# MONET

The Paintings of  
Claude Monet  
1840-1926

1986 Engagement Calendar

Also available from Pomgranate is a 1986 wall calendar, "Monet". Our catalog of fifty-six 1986 wall and desk calendars is available free of charge. A full color catalog illustrating our extensive line of posters and notecards is available for \$2.00 (confined toward our first purchase). Write to Pomgranate, Box 980, Corte Madera, California 94925.

Published by Pomgranate Calendars & Books, Box 980, Corte Madera, California 94925  
All rights reserved. Catalog No. 8689  
Printed in Singapore by Tien Wah Press (Pte) Ltd.

30  
Monday

31  
Tuesday

*Eden & El Anniversary*

1986

1  
Wednesday

New Year's Day

2  
Thursday

*James Blay*

3  
Friday

Third Quarter

4  
Saturday

*Ellen Blay*

5  
Sunday

DEC/JAN

January	
S	M
5	6
12	13
19	20
26	27
	28
	29
	30
	31



detail.  
 signed in field, 1893,  
 oil on canvas, 25x40"  
 Museum of Fine Arts,  
 Springfield, Ma.  
 The James Philip Gray  
 Collection

6  
Monday *Poster*

7  
Tuesday *Poster*

8  
Wednesday

9  
Thursday

10  
Friday  
*New Moon*

11  
Saturday

12  
Sunday

JANUARY

S	M	T	W	T	F	S
5	6	7	8	9	10	11
12	13	14	15	16	17	18
19	20	21	22	23	24	25
26	27	28	29	30	31	



detail  
*The House of Builders*,  
 Simon, 1903, oil on canvas  
 32 x 36 1/2"  
 National Gallery of Art,  
 Chester Dale Collection

13 Monday *Problems*

14 Tuesday *Ann Bldg*

15 Wednesday *Tom & Carl*

16 Thursday *Father RIP 1918*

17 Friday *Martin Luther King, Jr's Birthday*

18 Saturday

19 Sunday *Landl wins Masters C-3  
vs Barber 6-2 7-6*

JANUARY

1	M	1	W	1	F	4
2	T	2	T	2	S	5
3	W	3	W	3	S	6
4	Th	4	Th	4	S	7
5	F	5	F	5	S	8
6	S	6	S	6	S	9
7	S	7	S	7	S	10
8	S	8	S	8	S	11
9	S	9	S	9	S	12
10	S	10	S	10	S	13
11	S	11	S	11	S	14
12	S	12	S	12	S	15
13	S	13	S	13	S	16
14	S	14	S	14	S	17
15	S	15	S	15	S	18
16	S	16	S	16	S	19
17	S	17	S	17	S	20
18	S	18	S	18	S	21
19	S	19	S	19	S	22
20	S	20	S	20	S	23
21	S	21	S	21	S	24
22	S	22	S	22	S	25
23	S	23	S	23	S	26
24	S	24	S	24	S	27
25	S	25	S	25	S	28
26	S	26	S	26	S	29
27	S	27	S	27	S	30
28	S	28	S	28	S	31



detail.  
The Road to Wehau, ca. 1890.  
oil on canvas, 58 x 72cm  
The Phillips Collection,  
Washington, D.C.

20

20

Monday

*Ellen*

21

21

Tuesday

*3:30 Dentist*

22

22

Wednesday

23

23

Thursday

*D. D.F.*

24

24

Friday

25

25

Saturday

*Dinner in Park 6 pm*

26

26

Sunday

*Full Moon*

JANUARY

1	m	1	w	1	f	4
2	1	2	2	2	3	4
3	2	3	3	3	4	5
4	3	4	4	4	5	6
5	4	5	5	5	6	7
6	5	6	6	6	7	8
7	6	7	7	7	8	9
8	7	8	8	8	9	10
9	8	9	9	9	10	11
10	9	10	10	10	11	12
11	10	11	11	11	12	13
12	11	12	12	12	13	14
13	12	13	13	13	14	15
14	13	14	14	14	15	16
15	14	15	15	15	16	17
16	15	16	16	16	17	18
17	16	17	17	17	18	19
18	17	18	18	18	19	20
19	18	19	19	19	20	21
20	19	20	20	20	21	22
21	20	21	21	21	22	23
22	21	22	22	22	23	24
23	22	23	23	23	24	25
24	23	24	24	24	25	26
25	24	25	25	25	26	27
26	25	26	26	26	27	28
27	26	27	27	27	28	29
28	27	28	28	28	29	30
29	28	29	29	29	30	31



detail.  
 Watercolor by John. The Sun Through  
 the Mill, 1903  
 oil on canvas, 75.7 x 100.3 cm.  
 National Gallery of Canada,  
 Ottawa

27  
Monday  
27  
*Monday*

28  
Tuesday  
28

29  
Wednesday  
29

30  
Thursday  
30

31  
Friday  
31

1  
Saturday  
1

2  
Sunday  
2

JAN/FEB

February

1	2	3	4	5	6	7	8	9	10	11	12	13	14	15	16	17	18	19	20	21	22	23	24	25	26	27	28



detail,  
Mynheer, River Landscape, 1907  
oil on canvas, 31 3/4 x 36 1/4"  
Wadsworth Athleten, Hartford  
Bequest of Anne Parrish Ticeall,  
1957/62

Third Quarter

34  
Ed Gibbs Bldg

3  
Monday

4  
Tuesday

5  
Wednesday  
*Papers*

6  
Thursday

7  
Friday

8  
Saturday

9  
Sunday

35  
*Blaine Rip 1981*

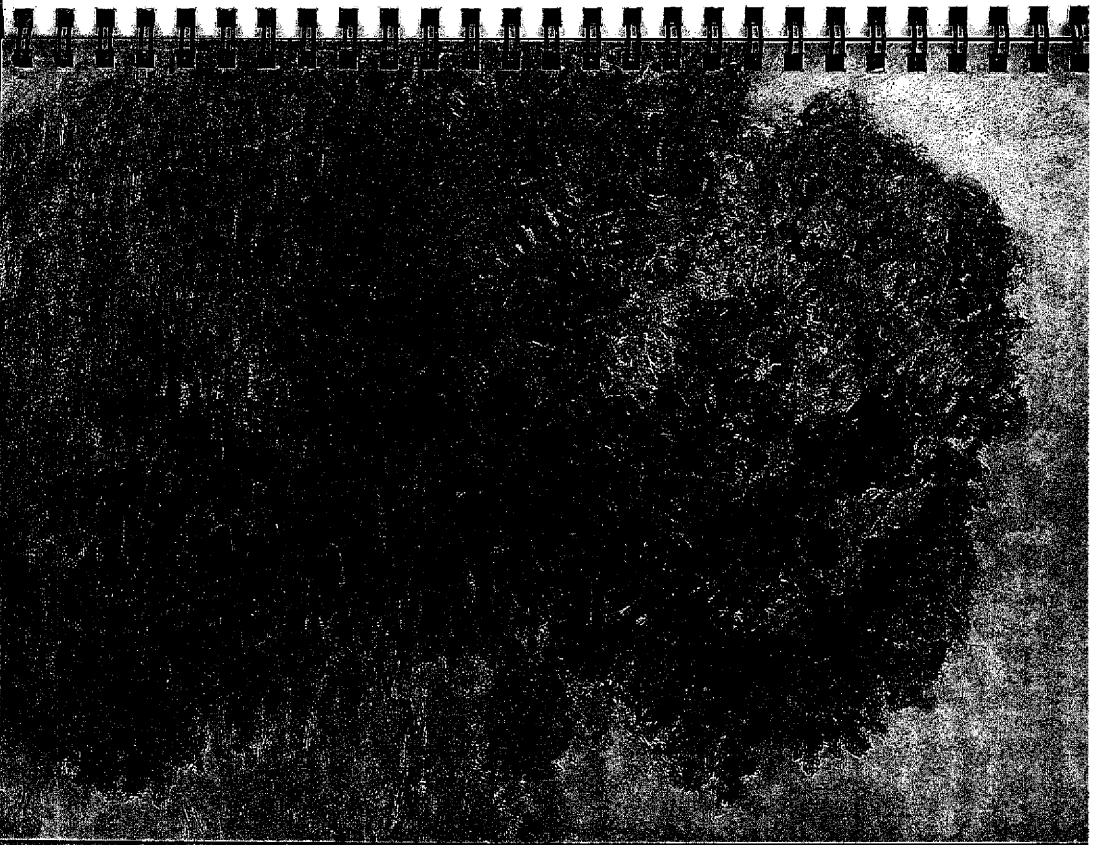
New Moon

FEBRUARY

S	M	T	W	T	F	S
	2	3	4	5	6	7
8	9	10	11	12	13	14
15	16	17	18	19	20	21
22	23	24	25	26	27	28



detail.  
*The Sine at Givens, 1897*  
 oil on canvas, 32 1/4 x 39 1/4"  
 National Gallery of Art,  
 Washington, D.C.  
 Chester Dale Collection





June 1982

10 *Travis Day (1985)*

Monday *hobby*

42 *Richard & Kay*

11 *3 pm Dentist post-poned*

Tuesday

43 12

Wednesday

*Ab's Wednesday  
Lincoln's Birthday*

44 13

Thursday

45 14

Friday

*Valentine's Day*

46 15

Saturday

47 16

Sunday

*First Quarter*

FEBRUARY

S	M	T	W	T	F	S
						1
						2
						3
						4
						5
						6
						7
						8
						9
						10
						11
						12
						13
						14
						15
						16
						17
						18
						19
						20
						21
						22
						23
						24
						25
						26
						27
						28



detail.  
*Grand Canal, Venice*  
 oil on canvas, 88 1/2 x 13 1/4,"  
 The Fine Arts Museums of  
 San Francisco  
 Gift of Ogden Hooker

48  
17

Monday

Tom Johnson

President's Day

49  
18

Tuesday

Parker

50  
19

Wednesday

~~Parker~~

51  
20

Thursday

52  
21

Friday

Tennis 1pm 7pm

53  
22

Saturday

Band Eric Bly 1984

Washington's Birthday

54  
23

Sunday

FEBRUARY

1	m	t	w	t	f	s
2	3	4	5	6	7	8
9	10	11	12	13	14	15
16	17	18	19	20	21	22
23	24	25	26	27	28	



detail.  
The Cliffs at Eizen  
oil on canvas, 25 1/2" x 31 1/2",  
Sterling and Franckle Clark  
Art Institute,  
Williamstown, Massachusetts

24 Monday *Mulley*

Full Moon

25 Tuesday *3 dentist*

26 Wednesday

27 Thursday

28 Friday

1 Saturday

2 Sunday

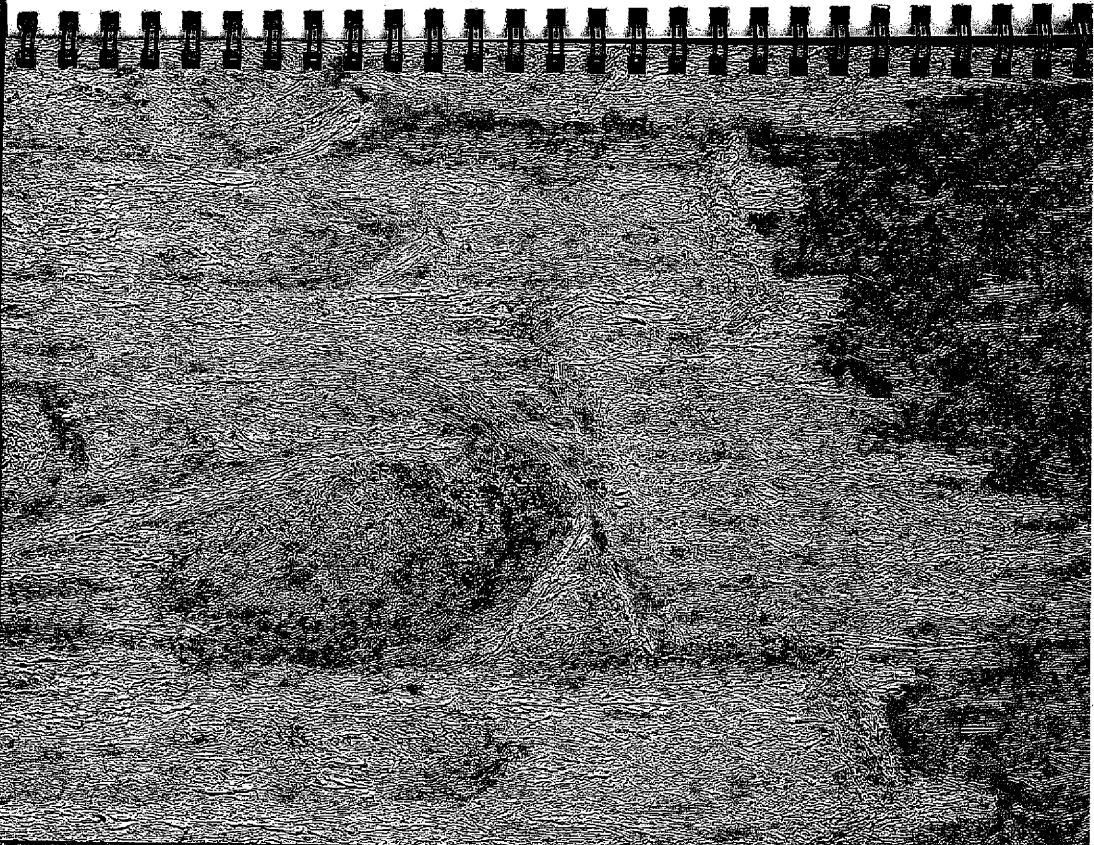
*Robert Rauschenberg 1971*

FEB/MAR

month	1	2	3	4	5	6	7	8	9	10	11	12	13	14	15	16	17	18	19	20	21	22	23	24	25	26	27	28	29	30	31



detail  
 Robert Rauschenberg, *Wet Rock*,  
 Sunlight, 1974  
 oil on canvas, 39 1/2 x 26"  
 National Gallery of Art,  
 Washington, D.C.  
 Chester Dale Collection



63  
3 Monday *news TV* Third Quarter

62  
4 Tuesday *news Act*

*Poker + \$1.00*

64  
5 Wednesday *D/Ag*

65  
6 Thursday

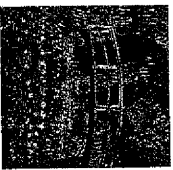
66  
7 Friday

67  
8 Saturday

68  
9 Sunday

MARCH

1	m	t	w	t	f	s
2	3	4	5	6	7	8
9	10	11	12	13	14	15
16	17	18	19	20	21	22
23	24	25	26	27	28	29
30	31					



detail.  
Wendell and Joseph Ridge  
oil on canvas, 90.5 x 83.7cm.  
The Art Museum,  
Princeton University  
Gift of the family of William  
Church Osborn, Class of 1885,  
Trustee of Princeton University  
(194-951), President of the  
Metropolitan Museum of Art  
(194-1947)

10 Monday *Monday*

New Moon

70 11 Tuesday

71 12 Wednesday  
1:30 - 3:30  
*pgs 4 of union*

72 13 Thursday  
12-6 pm  
*TV news*

73 14 Friday  
*Alfaurenstein RIP 1986*

74 15 Saturday

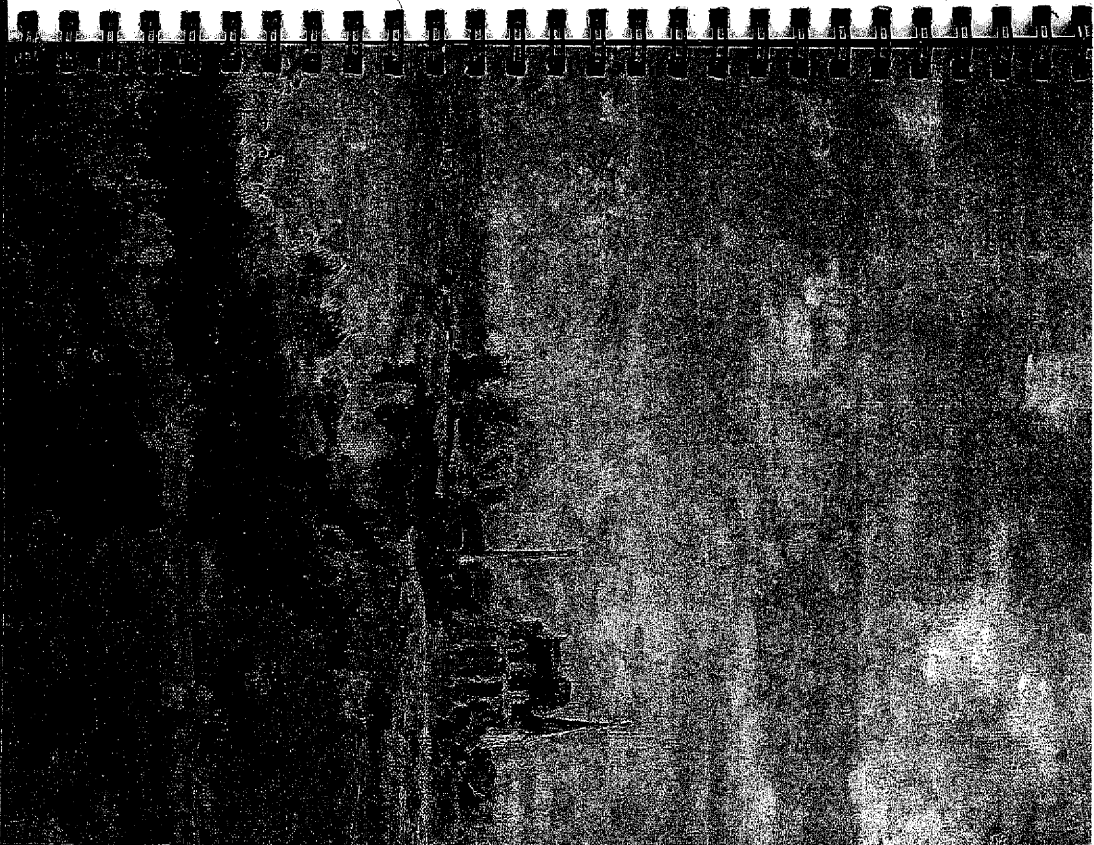
75 16 Sunday

MARCH

S	M	T	W	T	F	S
	2	3	4	5	6	7
8	9	10	11	12	13	14
15	16	17	18	19	20	21
22	23	24	25	26	27	28
29	30	31				



detail  
 Argemone, ca.1872  
 oil on canvas, 19 1/2 x 23 3/4"  
 National Gallery of Art,  
 Washington, D.C.  
 Alan Mellon Price Collection



17  
Monday

St. Patrick's Day

18  
Tuesday

*March Blank*

First Quarter

19  
Wednesday

20  
Thursday

21  
Friday

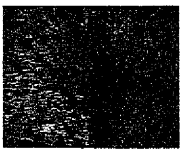
22  
Saturday

23  
Sunday

Palm Sunday

MARCH

S	M	T	W	T	F	S
	2	3	4	5	6	7
8	9	10	11	12	13	14
15	16	17	18	19	20	21
22	23	24	25	26	27	28
29	30	31				



detail,  
*Requiem des Capucins*,  
 1873-'74  
 oil on canvas, 794 x 331 cm.  
 The Nelson-Atkins Museum  
 of Art  
 Kansas City, Missouri  
 Acquired through the Kenneth  
 A. and Helen S. Spencer  
 Foundation Acquisition Fund

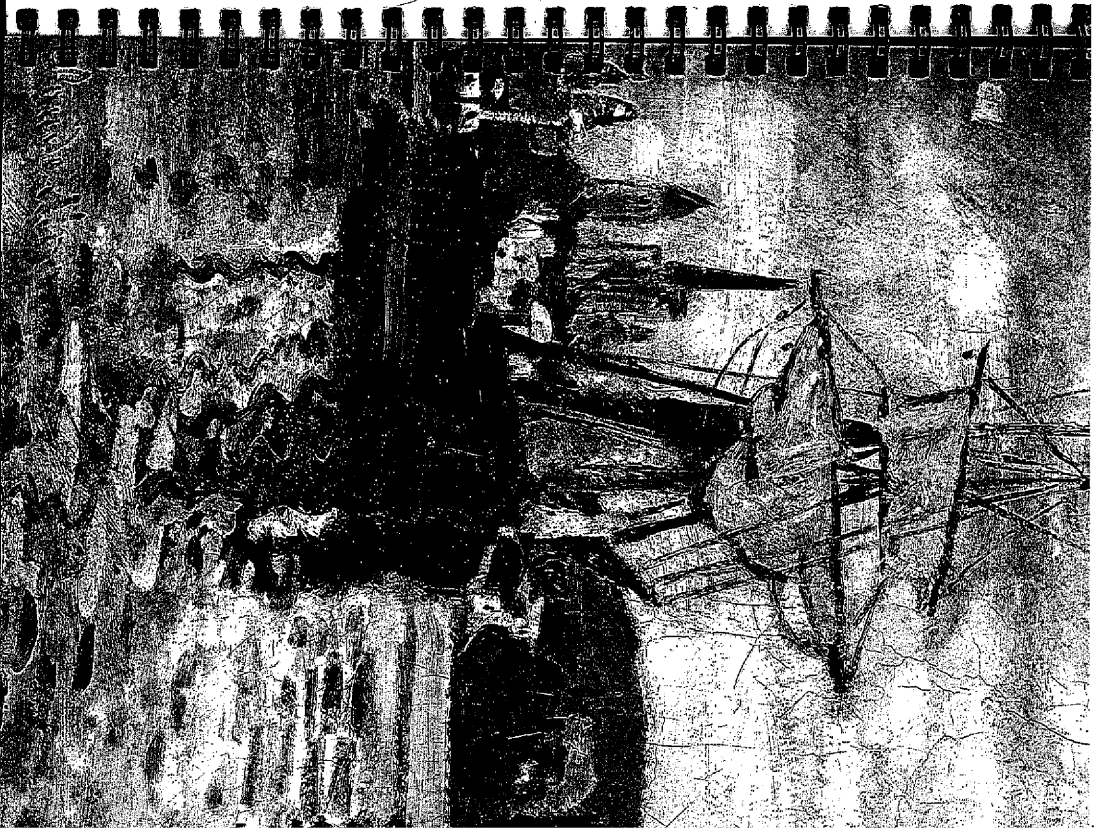
24	Monday	St. Lawrence Day
25	Tuesday	Feast
26	Wednesday	Full Moon
27	Thursday	
28	Friday	Good Friday
29	Saturday	Good Hope Tom Sawyer
30	Sunday	Easter Sunday

MARCH

S	M	T	W	T	F	S
	1	2	3	4	5	6
7	8	9	10	11	12	13
14	15	16	17	18	19	20
21	22	23	24	25	26	27
28	29	30	31			



detail,  
*Ship Afloat on the Seine at  
 Rouen, 1872*  
 oil on canvas, 14 1/2 x 18 3/4"  
 National Gallery of Art,  
 Washington D.C.  
 Ailsa Mellon Bruce Collection



31

Monday

91

1

Tuesday

Third Quarter

92

2

Wednesday

93

3

Thursday 12:30 Dentist

94

4

Friday

95

5

Saturday

96

6

Sunday

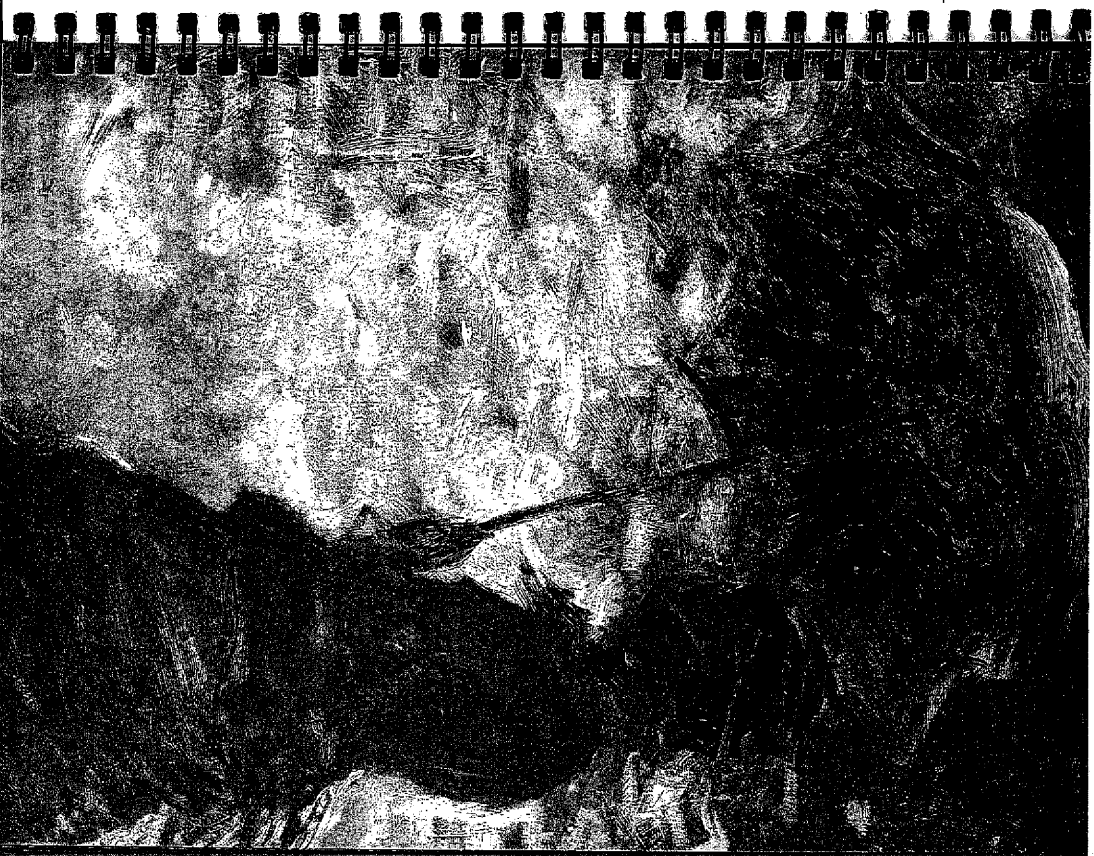
MAR/APRIL

April

S	M	T	W	T	F	S
	1	2	3	4	5	6
7	8	9	10	11	12	13
14	15	16	17	18	19	20
21	22	23	24	25	26	27
28	29	30				



detail.  
 Menon with a horse — *Nidome*  
 Menon and Her Son  
 1875  
 oil on canvas, 39 1/4 x 31 1/4"  
 National Gallery of Art,  
 Washington D.C.  
 Collection of Mr and Mrs.  
 Paul Mellon





97

7

Monday

98

8

Tuesday

99

9

Wednesday

New Moon

100

10

Thursday

*Plan*

101

11

Friday

*Mail Income For Returns*

102

12

Saturday

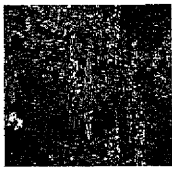
103

13

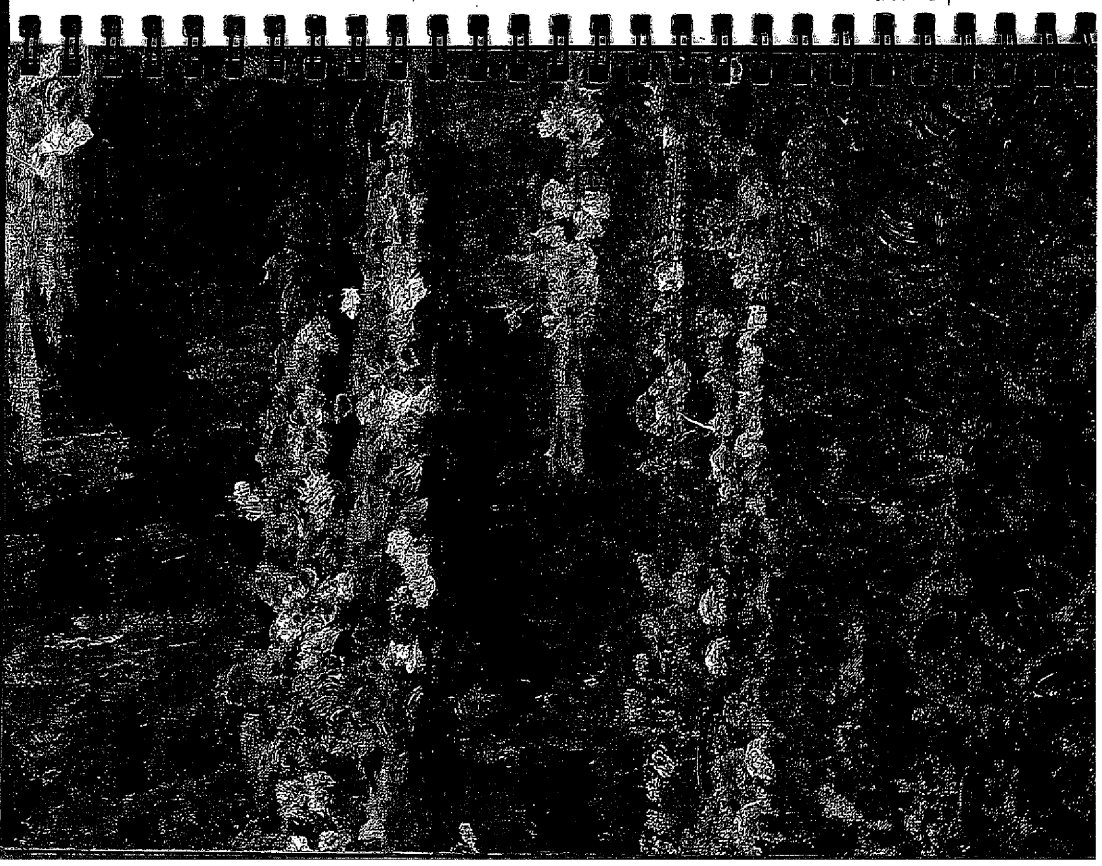
Sunday

APRIL

1	m	1	2	3	4	5	6
6	7	8	9	10	11	12	13
14	15	16	17	18	19	20	21
22	23	24	25	26	27	28	29
30							



detail,  
*Water Lily Pond*, 1934  
 oil on canvas, 89.2 x 91.3 cm  
 The Denver Art Museum,  
 Denver, Colorado



104  
14  
Monday

105  
15  
Tuesday

106  
16  
Wednesday

107  
17  
Thursday  
*Polka*  
First Quarter

108  
18  
Friday

109  
19  
Saturday

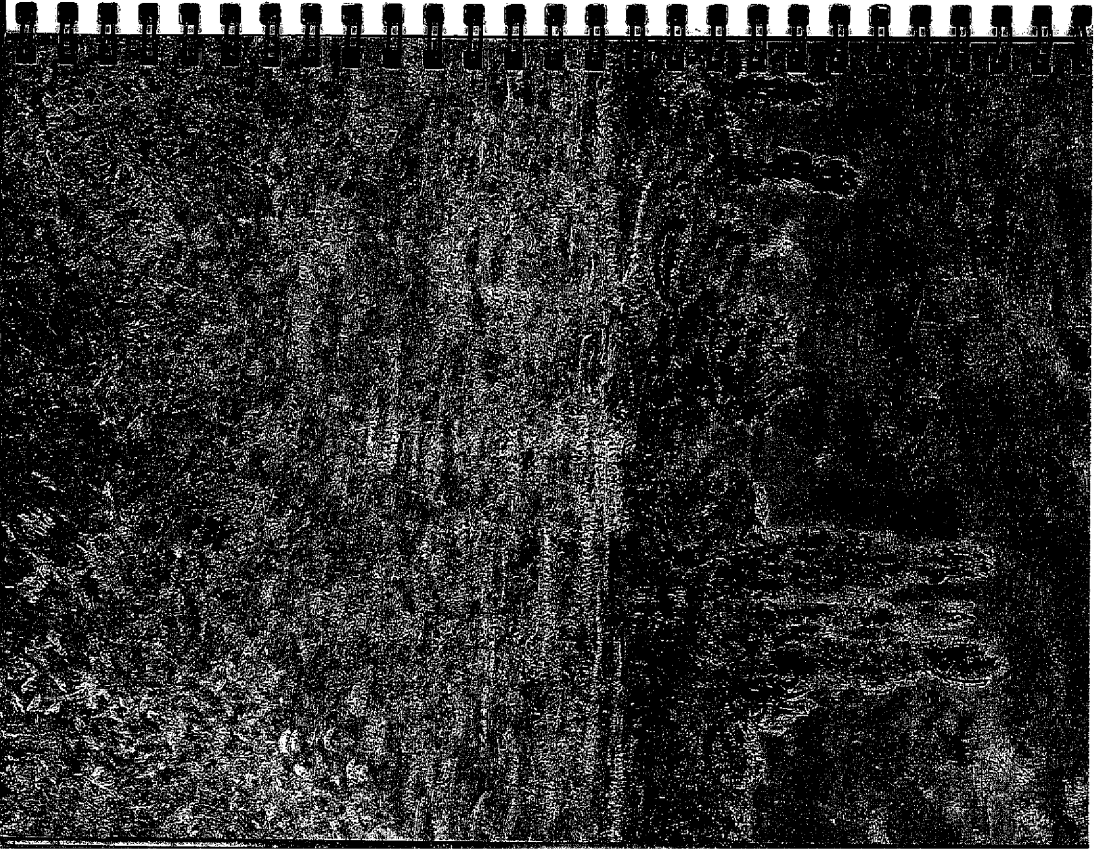
110  
20  
Sunday

APRIL

s	m	t	w	t	f	s
	1	2	3	4	5	
6	7	8	9	10	11	12
13	14	15	16	17	18	19
20	21	22	23	24	25	26
27	28	29	30			



detail,  
Beasts of the Seine, Woodcut  
1880  
oil on canvas, 28 3/4 x 39 1/2"  
National Gallery of Art  
Charles Dike Collection



11  
21  
Monday

112  
Pastor's Day  
Bliss

113  
22  
Tuesday

114

115  
23  
Wednesday  
Selva's  
Niece

116  
24  
Thursday

Easter Begins  
Full Moon

117  
25  
Friday  
Carpenter's

118  
26  
Saturday  
Rogers  
Bliss

119  
27  
Sunday

APRIL

1	m	1	w	1	f
2		2	t	2	s
3		3	w	3	s
4		4	t	4	s
5		5	w	5	s
6		6	t	6	s
7		7	w	7	s
8		8	t	8	s
9		9	w	9	s
10		10	t	10	s
11		11	w	11	s
12		12	t	12	s
13		13	w	13	s
14		14	t	14	s
15		15	w	15	s
16		16	t	16	s
17		17	w	17	s
18		18	t	18	s
19		19	w	19	s
20		20	t	20	s
21		21	w	21	s
22		22	t	22	s
23		23	w	23	s
24		24	t	24	s
25		25	w	25	s
26		26	t	26	s
27		27	w	27	s
28		28	t	28	s
29		29	w	29	s
30		30	t	30	s



detail  
 Peter of Chrysostomus, 1890  
 oil on canvas, 39 1/4 x 28 1/4"  
 National Gallery of Art,  
 Washington, D.C.  
 Chester Dale Collection

116 Deane & EA Anniversary (1965)

28

Monday

*script?*

119

29

Tuesday

*script?*

120

30

Wednesday

121

1

Thursday

Third Quarter

122

2

Friday

123

3

Saturday

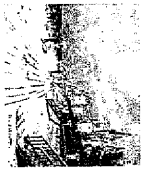
124

4

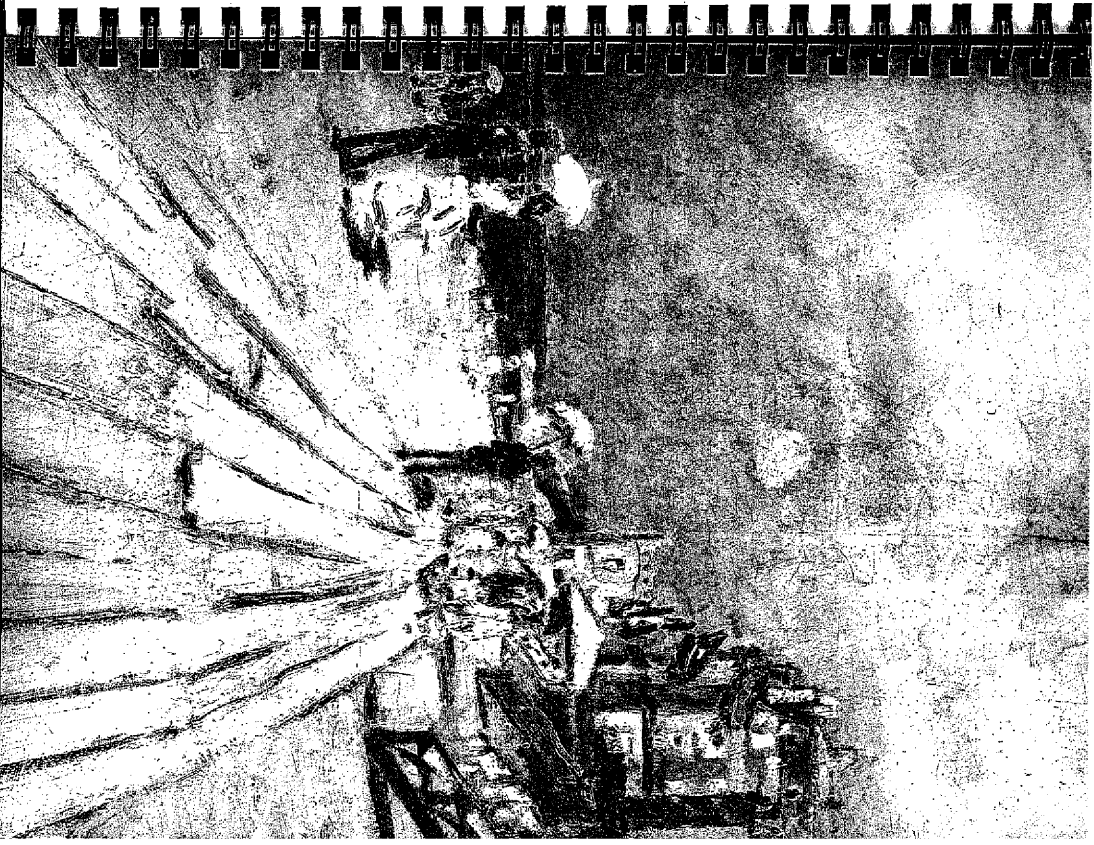
Sunday

APR/MAY

may	s	m	t	w	t	f	s	s
	4	5	6	7	8	9	10	11
	12	13	14	15	16	17	18	19
	20	21	22	23	24	25	26	27
	28	29	30	31				



detail,  
Booth at Trondheim,  
1871  
(fig. a Trondheim), 1871  
oil on canvas, 20 1/2 x 23 1/2"  
Wadsworth Atheneum, Hartford  
The Ella Gallup Sumner and  
Mary Catlin Sumner Collection,  
1948.116



125

5

Monday

*copy work*

126

6

Tuesday

*Open*

127

7

Wednesday

128

8

Thursday

*New Moon*

129

9

Friday

130

10

Saturday

131

11

Sunday

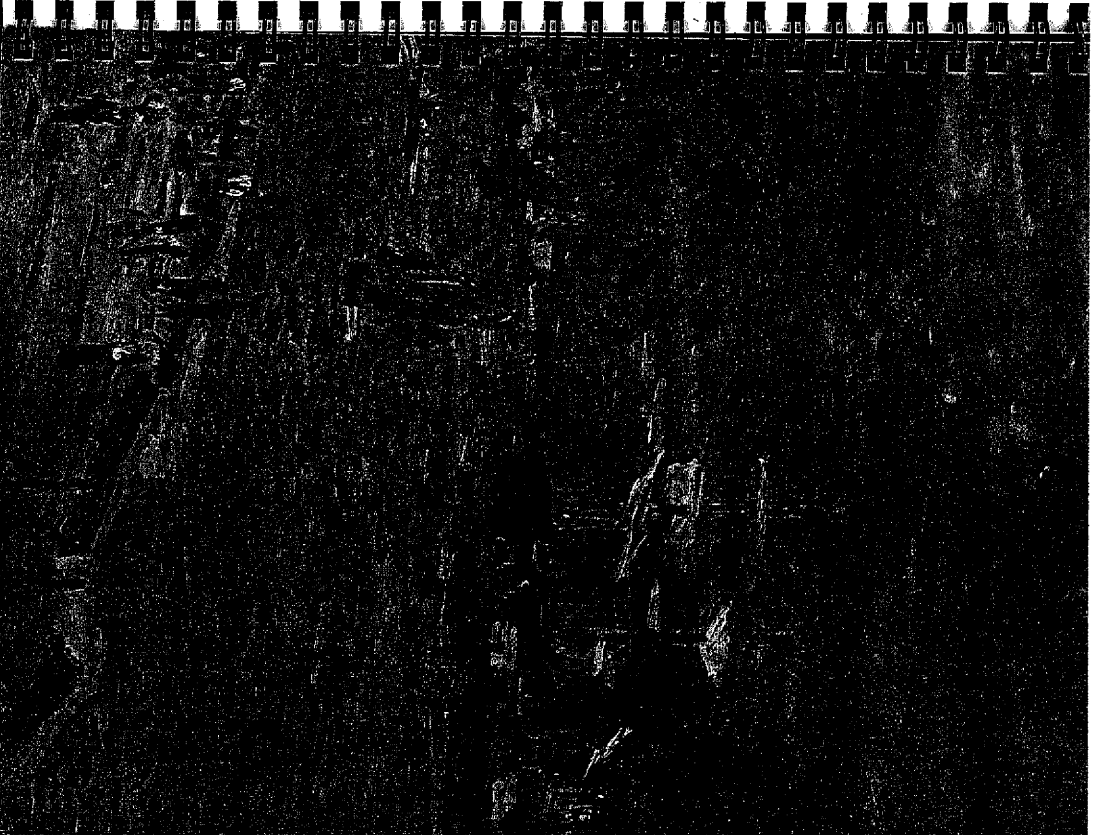
*Mother's Day*

MAY

S	M	T	W	T	F	S
				1	2	3
4	5	6	7	8	9	10
11	12	13	14	15	16	17
18	19	20	21	22	23	24
25	26	27	28	29	30	31



detail,  
*Hour of St. Anne*, 1874  
 oil on canvas, 23 1/4 x 40 1/4"  
 Philadelphia Museum of Art  
 Request of Mrs. Frank Graham  
 Thomson



12  
Monday

13  
Tuesday

14  
Wednesday

15  
Thursday

16  
Friday

17  
Saturday

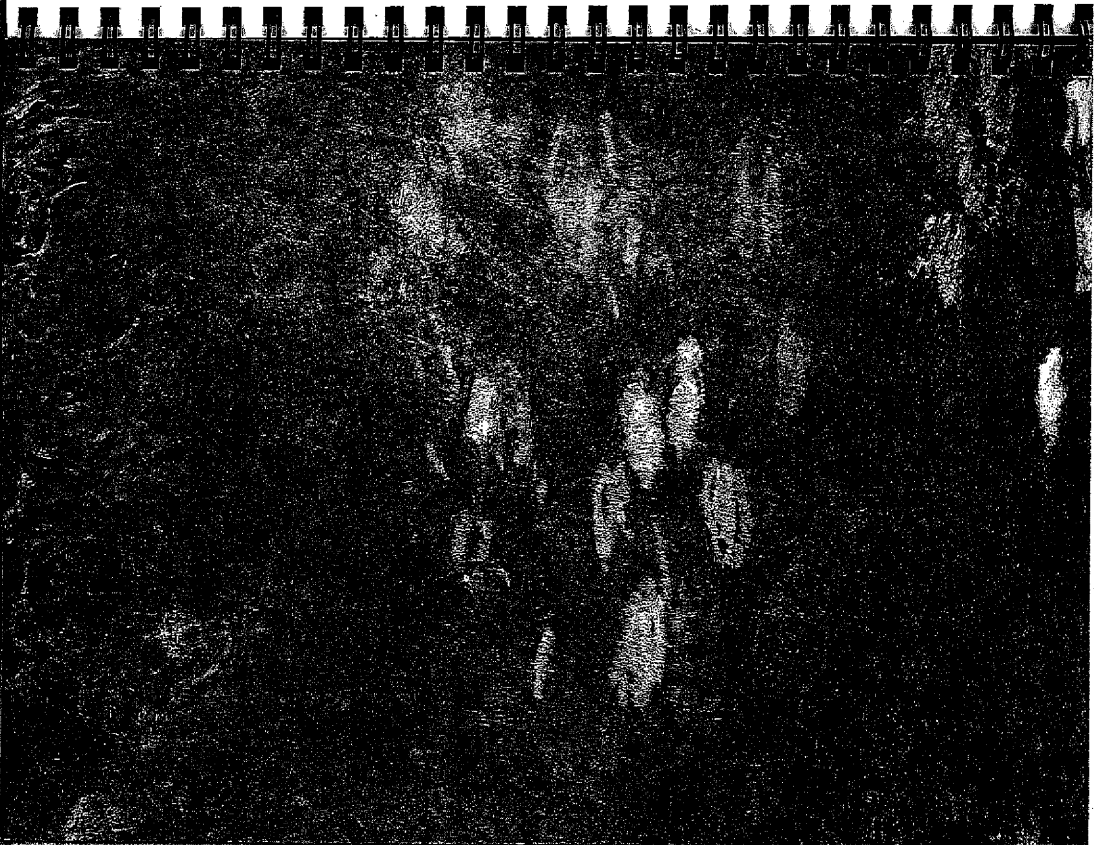
18  
Sunday

MAY

s	m	t	w	t	f	s
4	5	6	7	8	9	10
11	12	13	14	15	16	17
18	19	20	21	22	23	24
25	26	27	28	29	30	31



Detail  
Marshall  
oil on canvas, 79 x 167 1/2"  
The Cleveland Museum of Art  
John L. Severance Fund



139  
 19 *Monday*  
 Monday  
 Victoria Day (Canada)

140  
 20  
 Tuesday  
*Mon - Ellen & Loup*  
*Prize*

141  
 21  
 Wednesday

142  
 22  
 Thursday  
*3 Nieces*  
*& Emma*

143  
 23  
 Friday  
 Full Moon

144  
 24  
 Saturday

145  
 25  
 Sunday

MAY

S	M	T	W	T	F	S
				1	2	3
4	5	6	7	8	9	10
11	12	13	14	15	16	17
18	19	20	21	22	23	24
25	26	27	28	29	30	31



detail,  
 Morning Haze, 1888  
 oil on canvas, 29 1/4 x 38 1/4"  
 National Gallery of Art,  
 Washington, D.C.  
 Chester Dale Collection

26 Monday Memorial Day (obsvd.)

147 27 Tuesday

148 28 Wednesday

149 29 Thursday

150 30 Friday Memorial Day Third Quarter  
*Henry Tassett 8/147  
Sonic Arts*

151 31 Saturday  
*Henry Tassett  
Sonic Arts  
8/147*

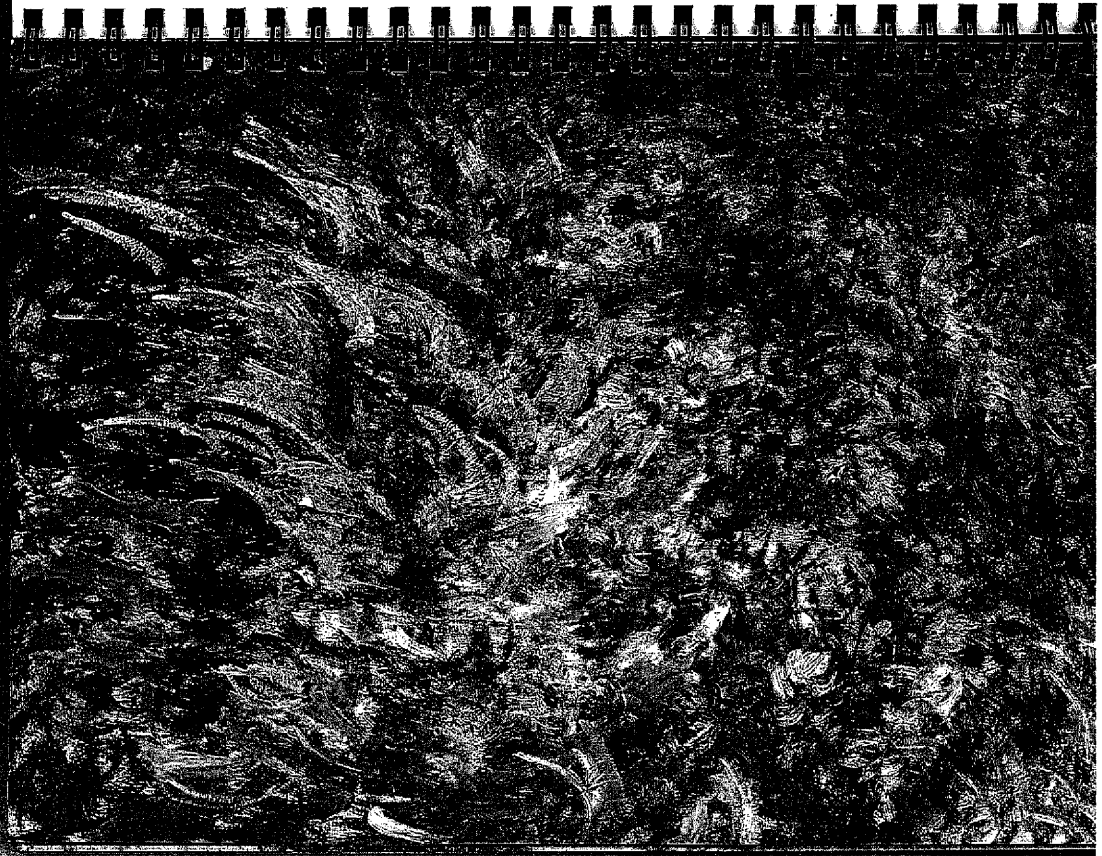
152 1 Sunday

MAY/JUNE

June	1	2	3	4	5	6	7	8	9	10	11	12	13	14	15	16	17	18	19	20	21	22	23	24	25	26	27	28	29	30



detail.  
*Inter by the Pond, ca. 1920-24*  
 oil on canvas, 78 1/2 x 59 1/4"  
 Virginia Museum of Fine Arts  
 The Williams Fund, 1971





153  
2 *Murphy*

JUNE

3	m	t	w	t	f	s
1	2	3	4	5	6	7
8	9	10	11	12	13	14
15	16	17	18	19	20	21
22	23	24	25	26	27	28
29	30					

Monday

3  
Tuesday

4  
Wednesday

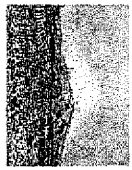
5  
Thursday

6  
Friday

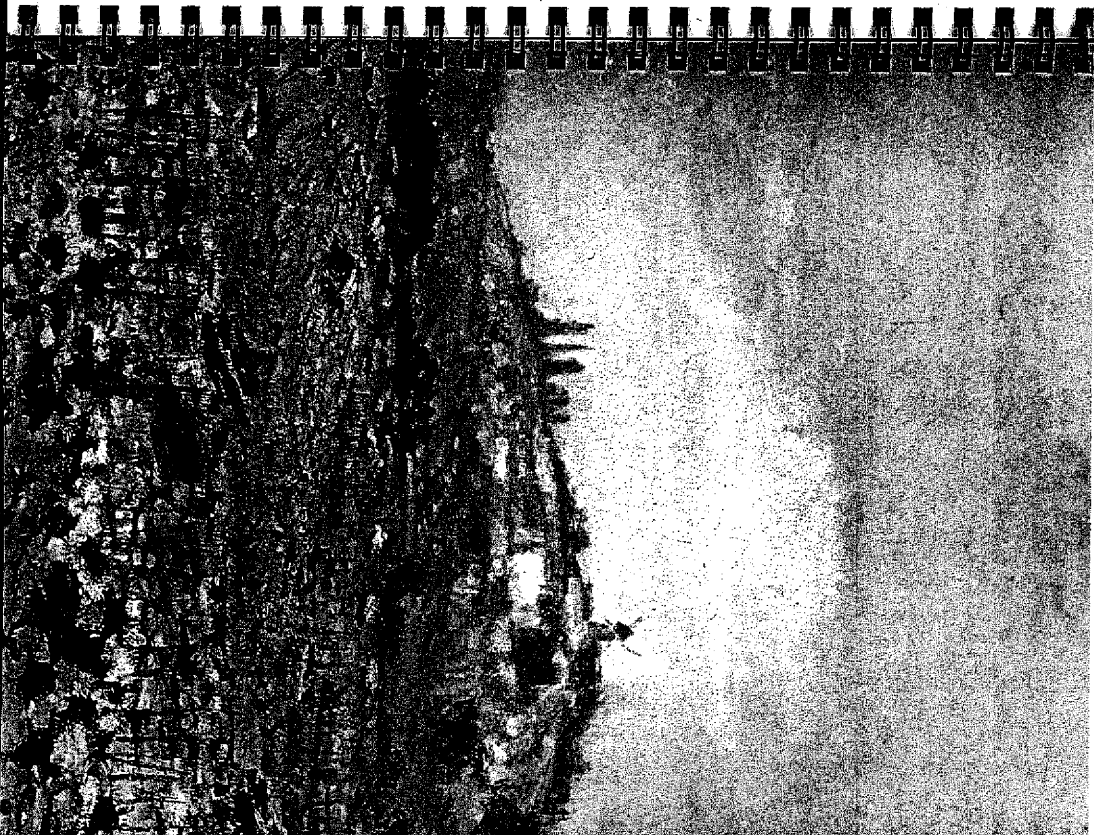
7  
Saturday

New Moon

8  
Sunday



detail.  
The Mill of Osgood  
oil on canvas, 21 x 32"  
Virginia Museum of Fine Arts  
The Williams Fund, 1960



160

9

Monday

161 *Lesson Games Billy*

10

Tuesday

162 *Music 1971  
Aegean R.P. 1971*

11

Wednesday

163 *Plastic  
Plumber  
←  
Plumber  
←  
Bill Rudgwick 12-5:30*

12

Thursday

164

13

Friday

165 *Clivia Plumber  
2-4 pm*

14

Saturday

166

15

Sunday

*Father's Day  
First Quarter*

JUNE

1	m	1	w	1	f
2	3	4	5	6	7
8	9	10	11	12	13
14	15	16	17	18	19
20	21	22	23	24	25
26	27	28	29	30	



detail,  
The Duck Pond  
oil on canvas, 28 1/2 x 23 1/2,"  
Sterling and Franck Clark  
Art Institute,  
Williamstown, Massachusetts

167  
Monday  
16 *Hubert*

168  
Tuesday  
17

169  
Wednesday  
18 *Paper*

170  
Thursday  
19

171  
Friday  
20 *Spice Drive R/P 1984*

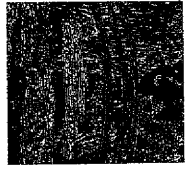
172  
Saturday  
21 *Chris placed me  
Lyle K. & Hudson met*

173  
Sunday  
22 *Ann - Ann & Tom*

Full Moon

JUNE

1	m	1	w	1	f	5
2	3	4	5	6	7	
8	9	10	11	12	13	14
15	16	17	18	19	20	21
22	23	24	25	26	27	28
29	30					



detail.  
The Japanese Face and the  
Water Lily Head - Oshichi,  
(a. Baito at Wiyapha), 1899  
oil on canvas, 35.8 x 28.4  
Philadelphia Museum of Art  
Ms. and Mrs. Carroll S. Tyson  
Collection

174  
23  
Monday

175  
24  
Tuesday

176  
25  
Wednesday

177  
26  
Thursday

178  
27  
Friday

179  
28  
Saturday

180  
29  
Sunday

JUNE

	f	m	t	w	t	f	s
1	2	3	4	5	6	7	
8	9	10	11	12	13	14	
15	16	17	18	19	20	21	
22	23	24	25	26	27	28	
29	30						

*free games & art*



detail,  
*Les Sires & Georges*, 1885  
oil on canvas, 25 1/4 x 38 1/2"  
Museum of Art  
Rhode Island School of Design  
Providence, Rhode Island

Third Quarter

181  
 30 *Queen Victoria's Anniversary (1818)*  
 Monday *July 4*

182  
 1 Tuesday  
 Canada Day

183  
 2 Wednesday  
*Queen Victoria's Anniversary*

184  
 3 Thursday

185  
 4 Friday  
 Independence Day

186  
 5 Saturday

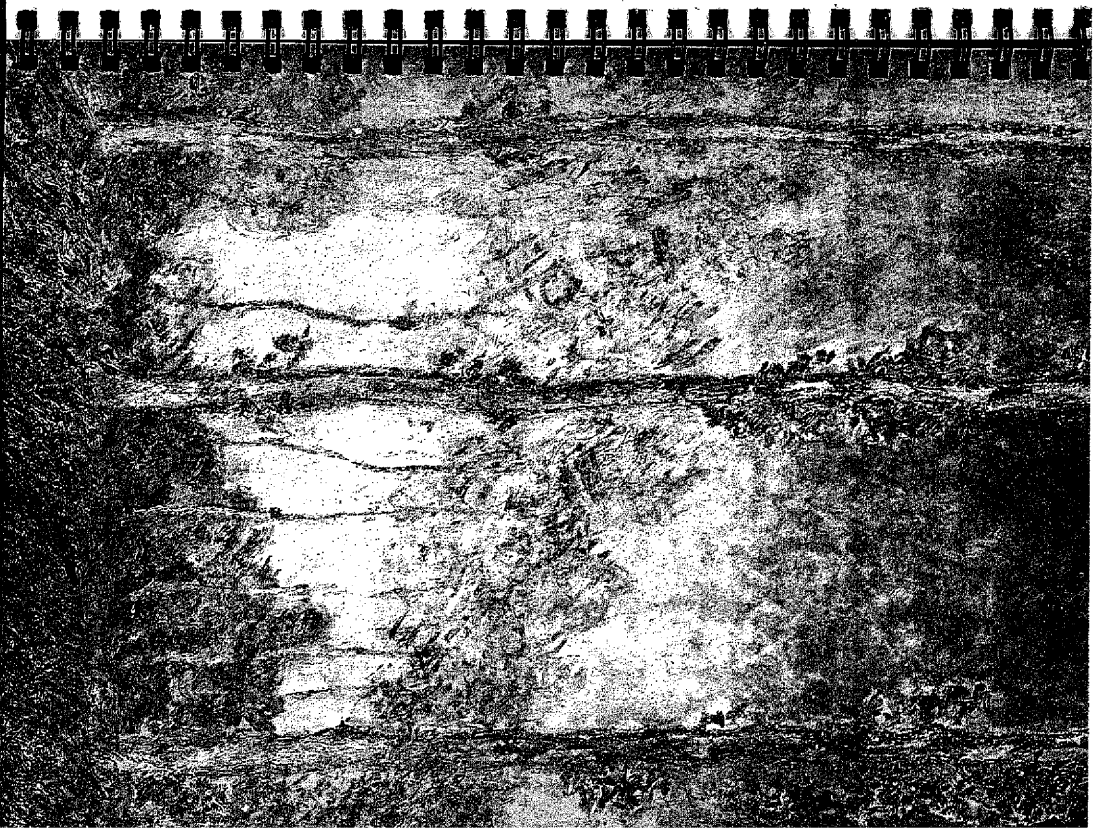
187  
 6 Sunday

JUNE/JULY

July	1	2	3	4	5	6	7	8	9	10	11	12	13	14	15	16	17	18	19	20	21	22	23	24	25	26	27	28	29	30	31



detail,  
 Aspen, 1891  
 oil on canvas, 36 1/4 x 29"  
 Philadelphia Museum of Art  
 Given by Chester Dale



188  
7  
Monday  
New Moon

189  
8  
Tuesday  
12 noon  
Dustiest

190  
9  
Wednesday

191  
10  
Thursday

192  
11  
Friday

193  
12  
Saturday

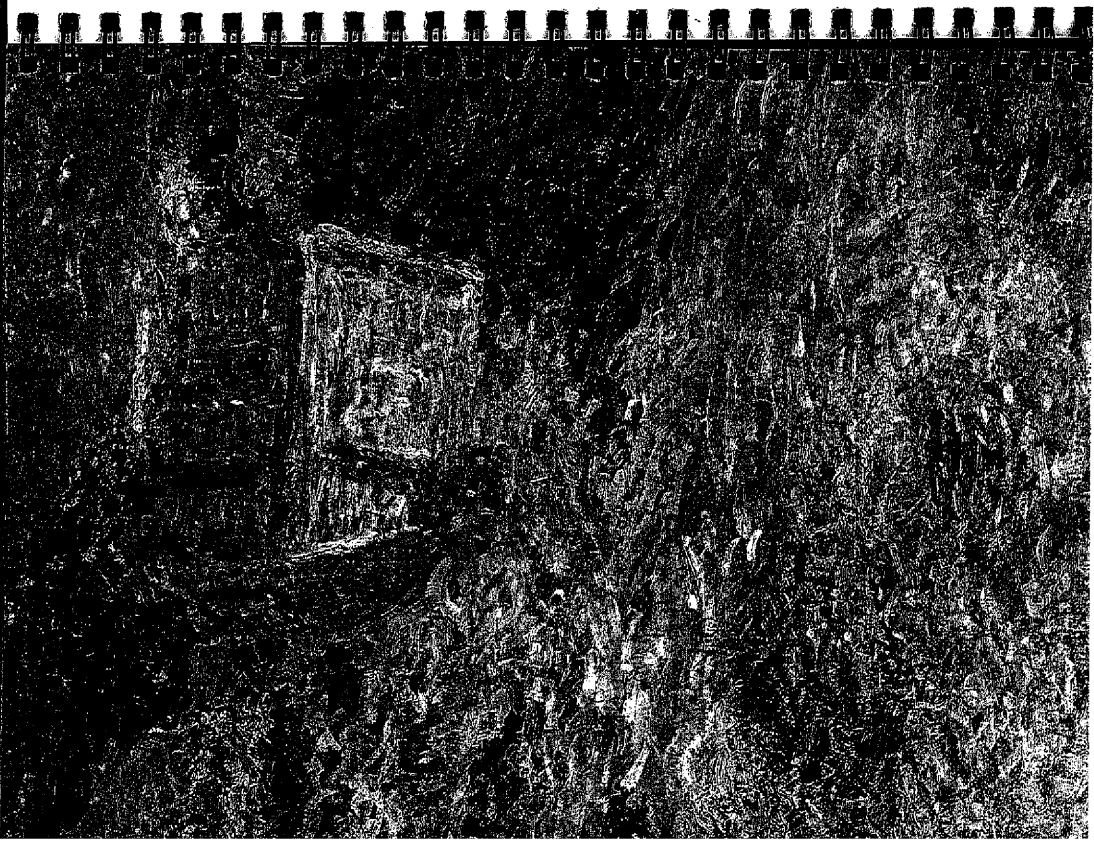
194  
13  
Sunday

JULY

S	M	T	W	T	F	S
6	7	8	9	10	11	12
13	14	15	16	17	18	19
20	21	22	23	24	25	26
27	28	29	30	31		



Detail,  
The Cannon House at Longport,  
1882  
oil on canvas, 32 x 23 1/2"  
Philadelphia Museum of Art  
William L. Elkins Collection



14 Monday *Muller*

First Quarter

15 Tuesday

196

16 Wednesday *P. Ross*

197

17 Thursday

198

18 Friday

199

19 *Sun Rip 1961*

20 Saturday

20 *Can Bly*

Sunday

JULY

S	M	T	W	T	F	S
6	7	8	9	10	11	12
13	14	15	16	17	18	19
20	21	22	23	24	25	26
27	28	29	30	31		



detail  
 from *Centrifug*, Mir Brede  
 1894  
 oil on canvas, 39 1/2 x 26"  
 National Gallery of Art,  
 Washington D.C.  
 Chester Dale Collection

202  
21  
Monday  
Full Moon

203  
22  
Tuesday

204  
23  
Wednesday

205  
24  
Thursday

206  
25  
Friday

207  
26  
Saturday

208  
27  
Sunday

*Ann B. King*

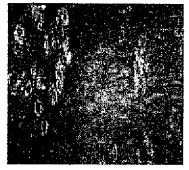
*Robert*

*Janet*

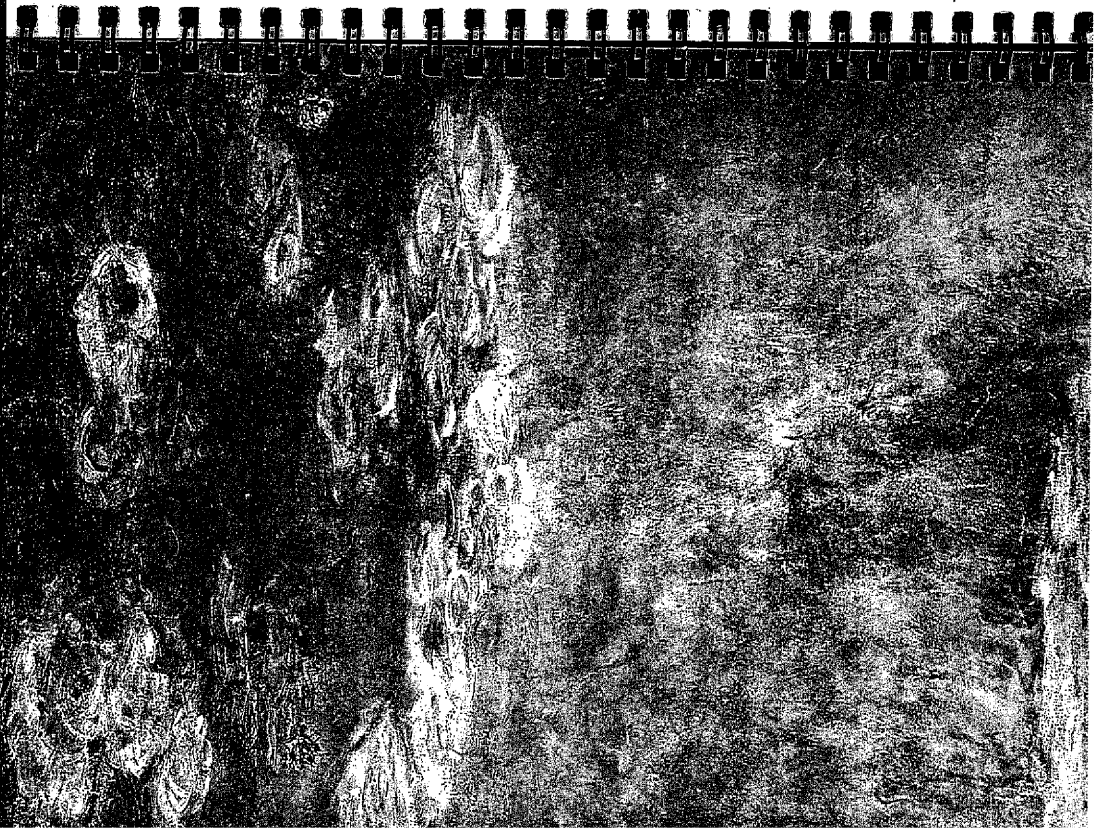
*Tom & Lisa - Anne*

JULY

S	M	T	W	T	F	S
	1	2	3	4	5	6
7	8	9	10	11	12	13
14	15	16	17	18	19	20
21	22	23	24	25	26	27
28	29	30	31			



detail  
Hendellia, 1908  
oil on canvas, 16 1/2 x 13 1/4  
Worcester Art Museum





28  
Monday

Third Quarter

210

29  
Tuesday

Vona 3:30-4

211

30  
Wednesday

212

31  
Thursday

213

At Biny

Friday

Leona

214

2  
Saturday

215

Rud & Sherry Anniversary

3  
Sunday

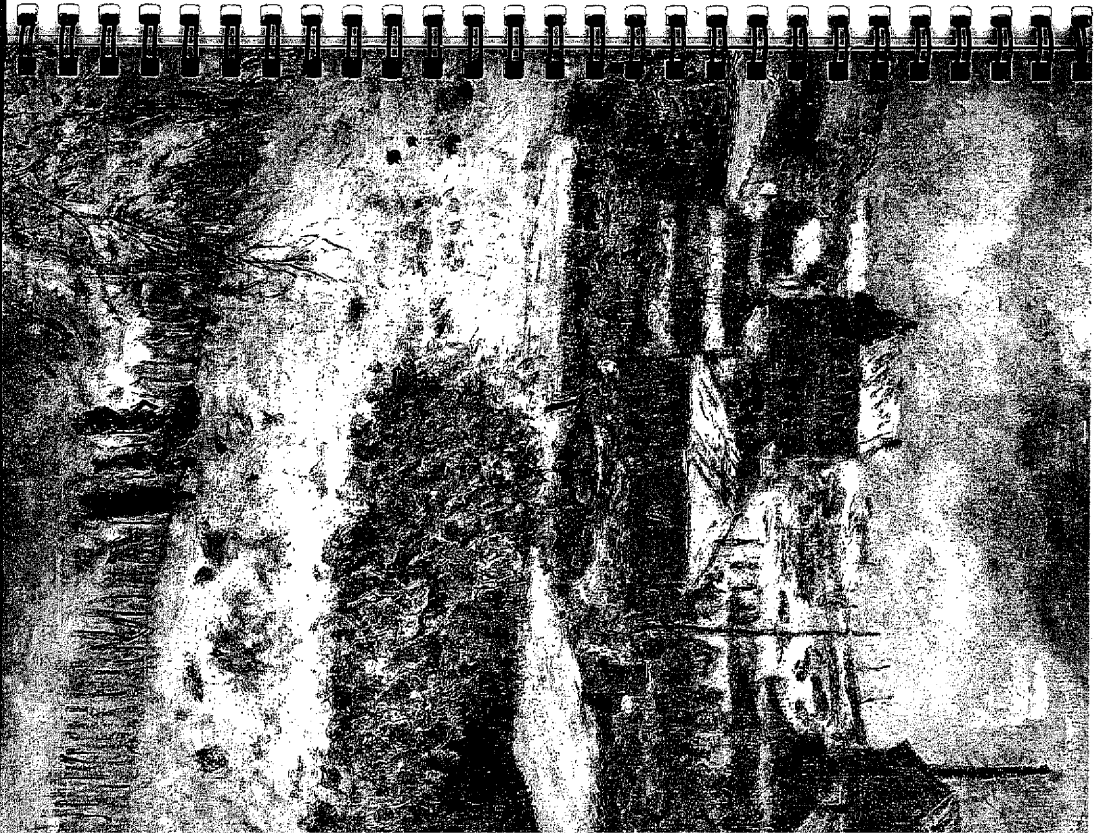
216

JULY/AUG

day	S	M	T	W	T	F	S
1							1
2							2
3							3
4							4
5							5
6							6
7							7
8							8
9							9
10							10
11							11
12							12
13							13
14							14
15							15
16							16
17							17
18							18
19							19
20							20
21							21
22							22
23							23
24							24
25							25
26							26
27							27
28							28
29							29
30							30
31							31



detail, *Agreement*  
oil on canvas, 61 x 55cm  
The Nelson-Atkins Museum  
of Art  
Kansas City, Missouri  
Gift of the Laura Nelson  
Kirkwood Bequestary Trust



4  
Monday

217

5  
Tuesday

New Moon

218

6  
Wednesday

219

7  
Thursday

*[Handwritten signature]*

220

8  
Friday

221

9  
Saturday

222

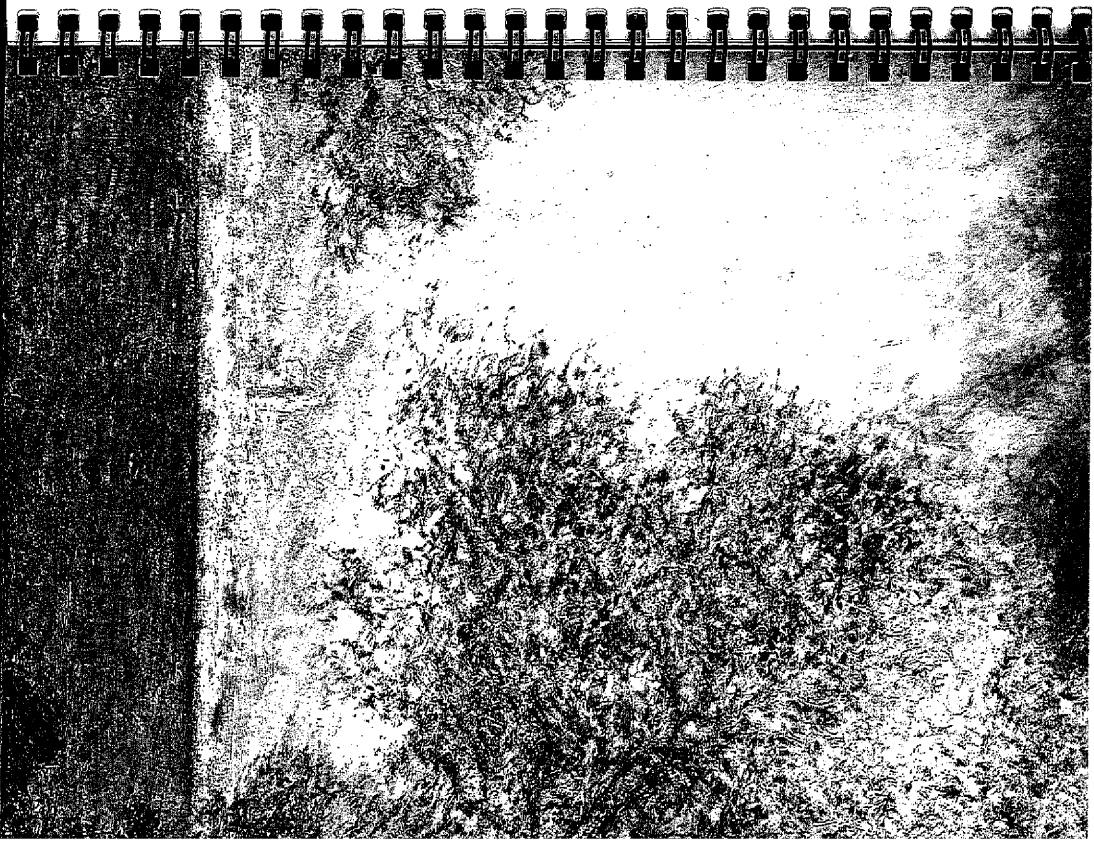
10  
Sunday

AUGUST

S	M	T	W	T	F	S
					1	2
3	4	5	6	7	8	9
10	11	12	13	14	15	16
17	18	19	20	21	22	23
24	25	26	27	28	29	30
31						



detail,  
Autumn Morning, 1888  
oil on canvas  
The Cleveland Museum of Art,  
The Charles Denman Wright  
Collection



223  
11 Monday  
Mistily

224  
12 Tuesday  
Foggy

225  
13 Wednesday  
First Quarter

226  
14 Thursday  
Cite Kasten RIP 1981

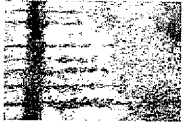
227  
15 Friday

228  
16 Saturday

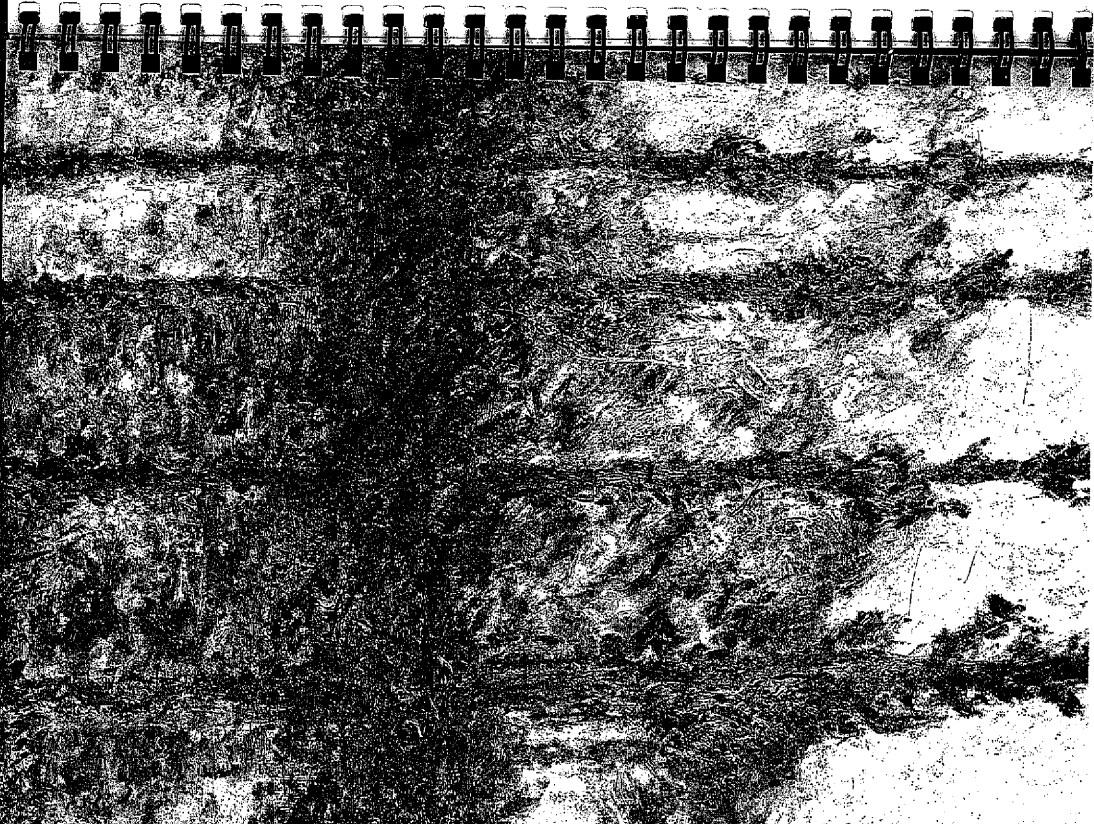
229  
17 Sunday

AUGUST

S	M	T	W	T	F	S
	3	4	5	6	7	8
9	10	11	12	13	14	15
16	17	18	19	20	21	22
23	24	25	26	27	28	29
30	31					



detail  
Fishes on the bank of the Spine  
Rice, 1895  
oil on canvas, 39 1/2 x 25 1/2"  
Philadelphia Museum of Art  
Bequest of Anne Thomson as a  
memorial to her father,  
Frank Thomson, and her mother,  
Mary Elizabeth Clarke Thomson



18 Monday

231

19 Tuesday

Full Moon

232

20 Wednesday

233

21 Thursday

234

22 Friday

235

23 Saturday

236

24 Sunday

*Over - Bugs Anning*

AUGUST

S	M	T	W	T	F	S
	3	4	5	6	7	8
9	10	11	12	13	14	15
16	17	18	19	20	21	22
23	24	25	26	27	28	29
30	31					



Detail, *Over - Bugs*, 1976, oil on canvas, 1976 x 28 1/2", Philadelphia Museum of Art, The W.P. Wiltsch Collection

25  
Monday

26  
Tuesday

27  
Wednesday  
Third Quarter

28  
Thursday

29  
Friday

30  
Saturday

31  
Sunday

AUGUST

S	M	T	W	T	F	S
					1	2
	3	4	5	6	7	8
	9	10	11	12	13	14
	15	16	17	18	19	20
	21	22	23	24	25	26
	27	28	29	30	31	



detail,  
*Wendell*, 1903  
 oil on canvas, 32 x 40"  
 The Dayton Art Institute  
 Gift of Mrs. Joseph Rubin  
 © 1993 The Dayton Art Institute

1

Monday

Labor Day

245

2

Tuesday

246

3

Wednesday

247

4

Thursday

New Moon

248

5

Friday

249

6

Saturday

250

7

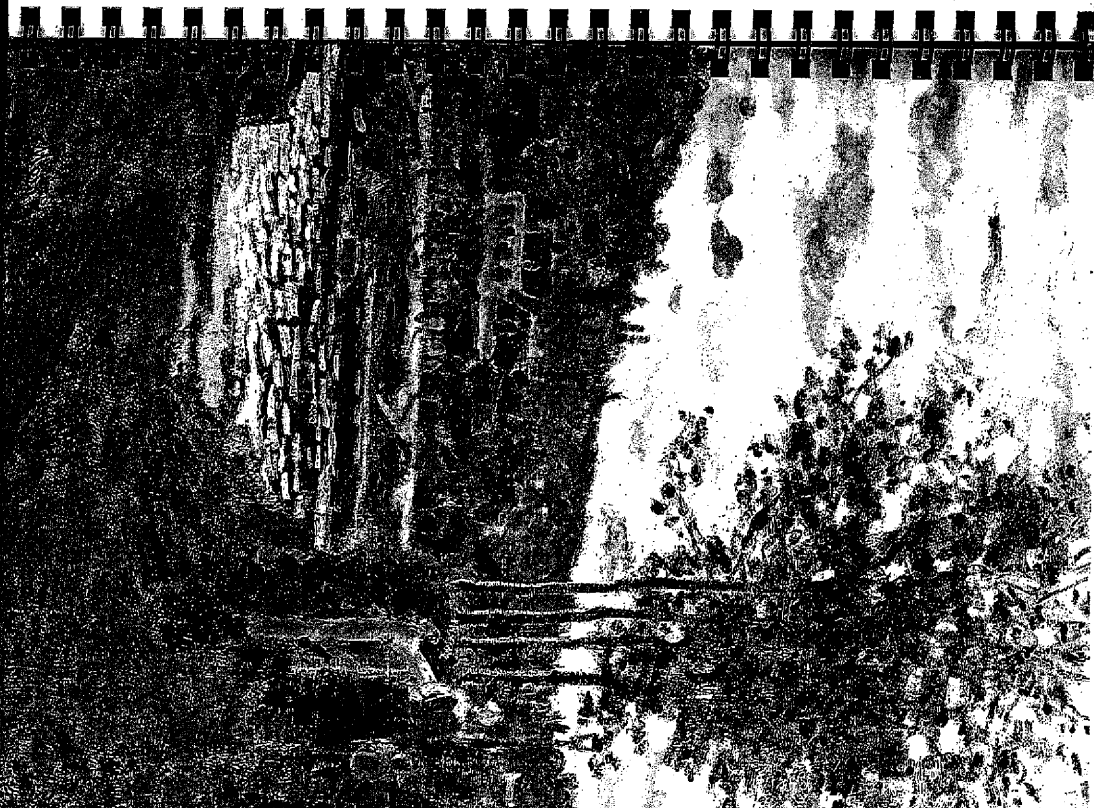
Sunday

SEPTEMBER

S	M	T	W	T	F	S
7	8	9	10	11	12	13
14	15	16	17	18	19	20
21	22	23	24	25	26	27
28	29	30				



Detail  
 of a scene at Bangor, ca. 1870  
 at the Currier Gallery of Art,  
 Manassas, New Hampshire  
 Mabel Patten Tolson Fund,  
 1949



8

Monday

SEPTEMBER

1	2	3	4	5	6	7	8
9	10	11	12	13	14	15	16
17	18	19	20	21	22	23	24
25	26	27	28	29	30		

9

Tuesday

10

Wednesday

11

Thursday

First Quarter

12

Friday

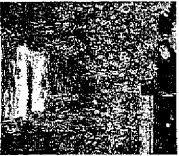
1-2:30  
JPM

13

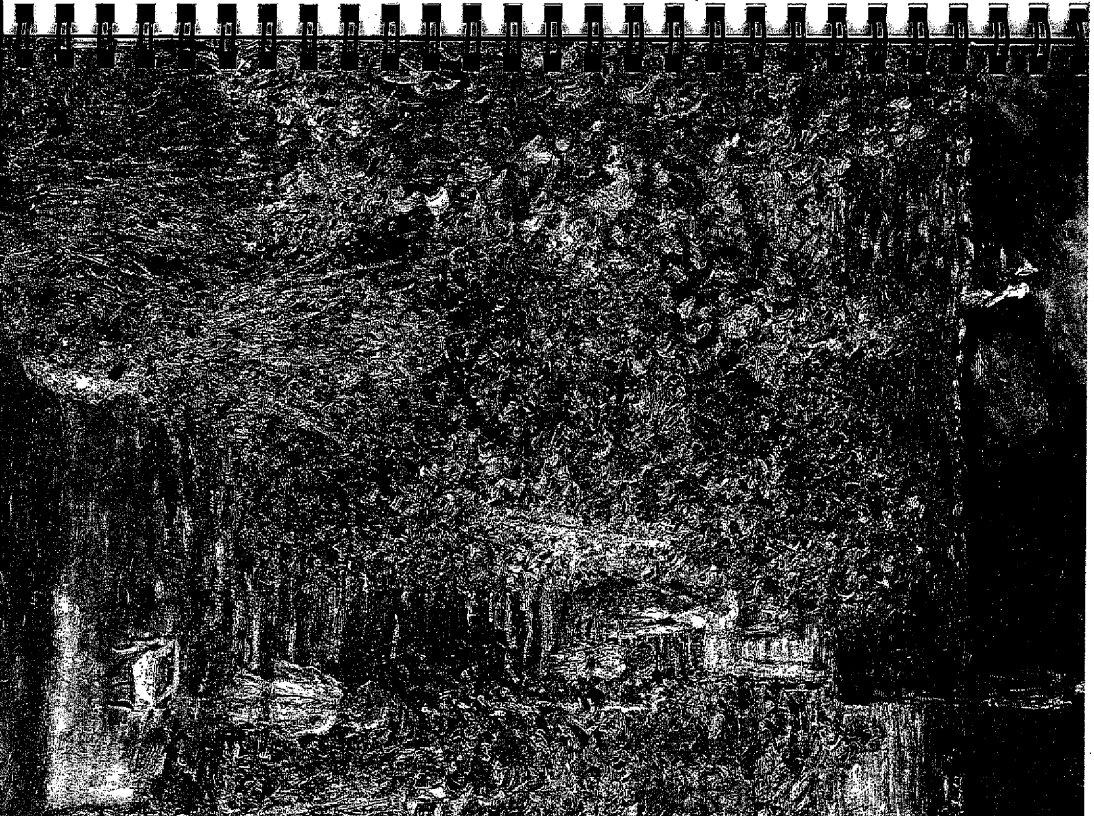
Saturday

14

Sunday



detail,  
The artist's Garden at Vineuil,  
oil on canvas, 59x44x47cm  
National Gallery of Art,  
Washington D.C.  
Alta Mellon Bruce Collection



15 Monday *Moving*

16 Tuesday *Just Buy*

17 Wednesday *POKER*

18 Thursday *12 noon Dentist*  
Full Moon

19 Friday

20 Saturday

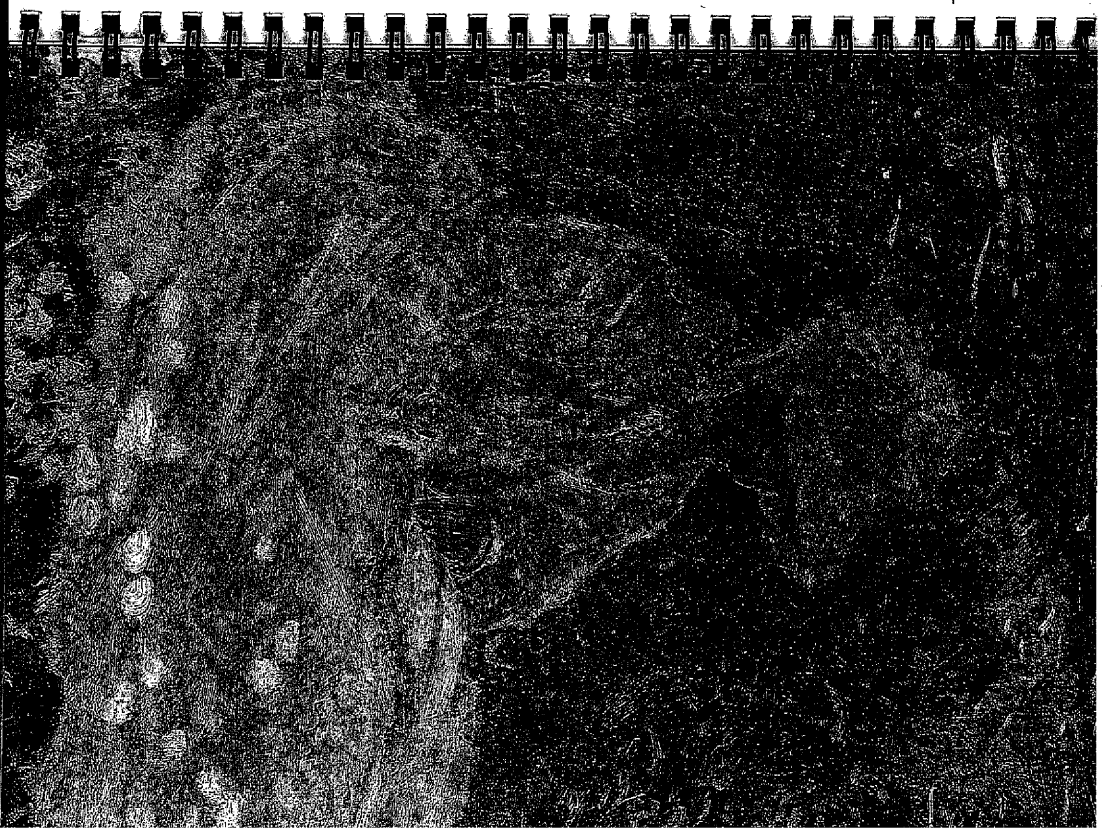
21 Sunday

SEPTEMBER

4	m	t	w	t	f	s
7	8	9	10	11	12	13
14	15	16	17	18	19	20
21	22	23	24	25	26	27
28	29	30				



detail,  
Springer, ca.1875  
oil on canvas, 1944 x 23 1/4"  
The Walter Art Gallery





265

Pete Abney

22 Monday

Mcelly

266

23 Tuesday

Ellen & Bejo

267

24 Wednesday

268

25 Thursday

269

26 Friday

Third Quarter

270

27 Saturday

271

28 Sunday

SEPTEMBER

S	M	T	W	T	F	S
1	2	3	4	5	6	7
8	9	10	11	12	13	14
15	16	17	18	19	20	21
22	23	24	25	26	27	28
29	30					



detail  
 from Cathedral: The facade in  
 San Juan  
 at an angle, 4 1/2 x 3 1/2"  
 See fig. 2 and Plate 10  
 201  
 Williams, Massachusetts

272

29

Monday

273

30

Tuesday

*Polka*

274

1

Wednesday

275

2

Thursday

276

*Tom Atkinson RIP 1986*

3

Friday

*Opus R 4*

New Moon

277

4

Saturday

Roth Hahonah

278

5

Sunday

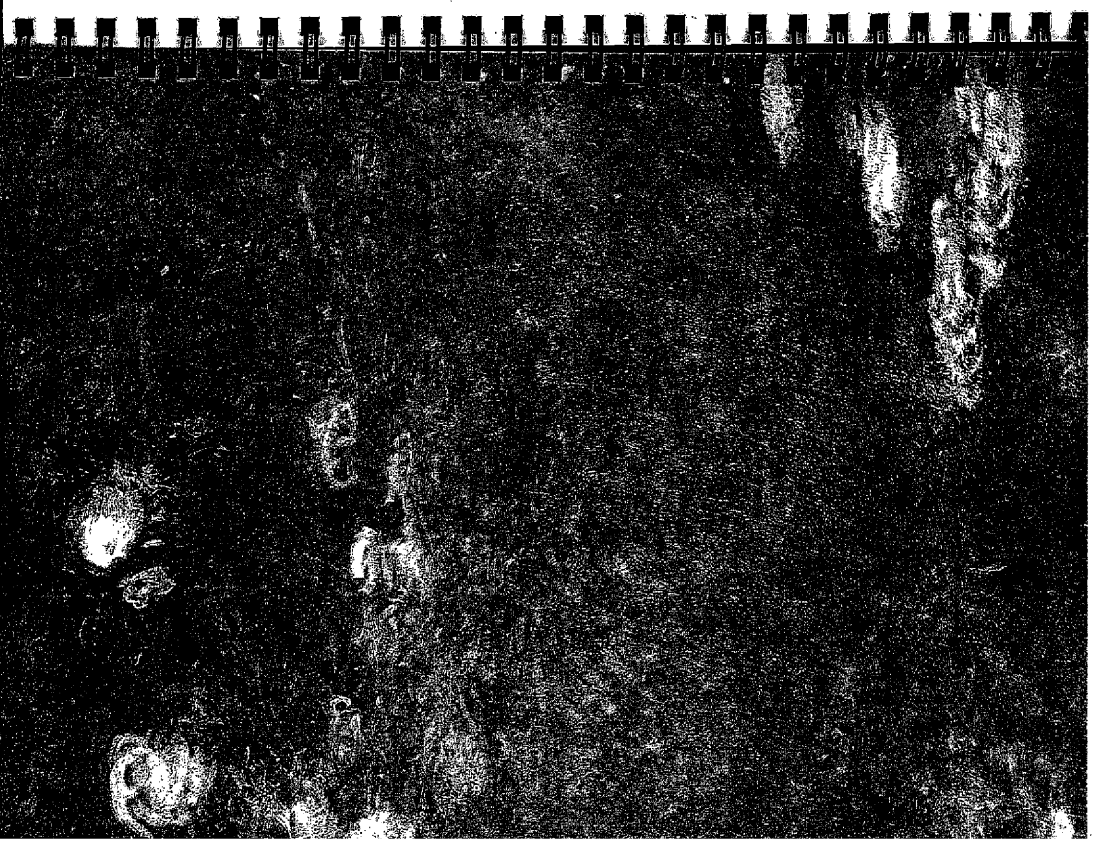
SEPT/OCT

number

S	M	T	W	T	F	S
		1	2	3	4	5
6	7	8	9	10	11	12
13	14	15	16	17	18	19
20	21	22	23	24	25	26
27	28	29	30	31		



detail  
 Murrells  
 oil on canvas, 79 x 67 1/2"  
 The Cleveland Museum of Art  
 John L. Severance Fund.



279  
Monday

6

*Mindy*

280  
Tuesday

7

281  
Wednesday

8

282  
Thursday

9

283  
Friday

10

*James Black*

*First Quarter*

284  
Saturday

11

285  
Sunday

12

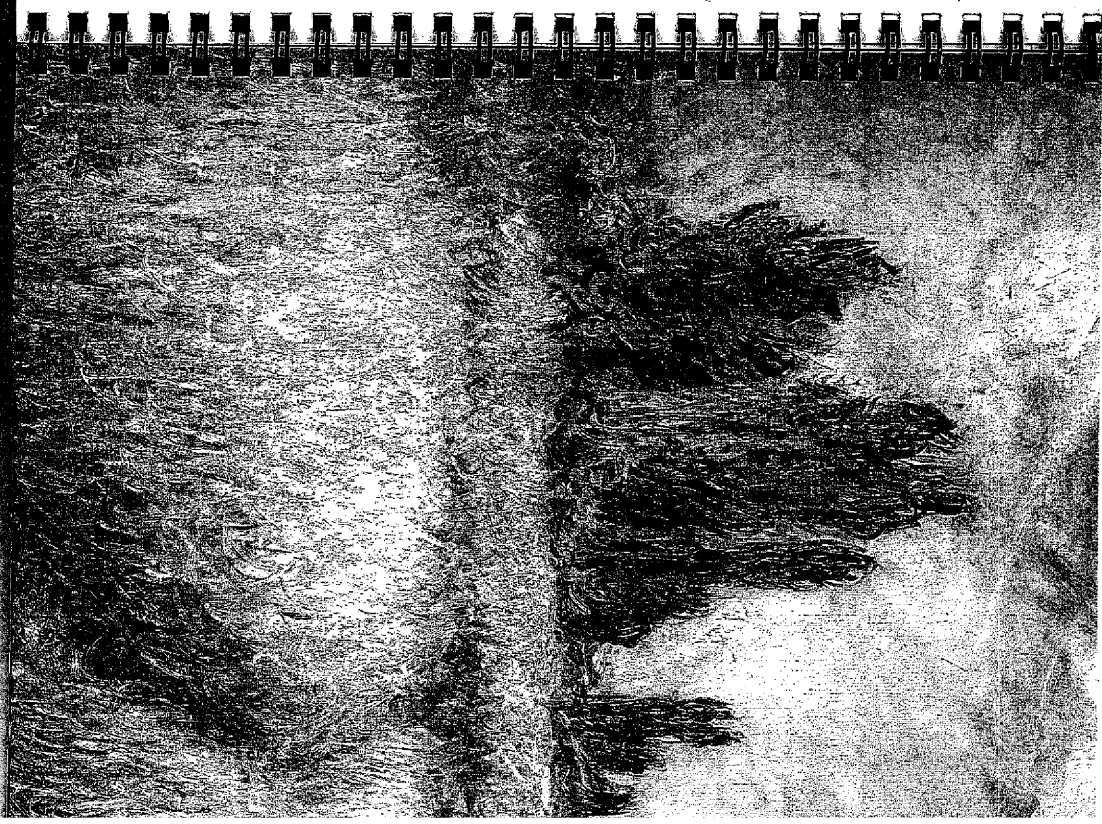
*Columbus Day*

OCTOBER

S	M	T	W	T	F	S
			1	2	3	4
5	6	7	8	9	10	11
12	13	14	15	16	17	18
19	20	21	22	23	24	25
26	27	28	29	30	31	



detail.  
The Wheat Field  
oil on canvas, 25 1/2 x 32"  
The National Museum of Art  
Gift of Mr. Henry White  
Cannon



13 Monday  
Thinking Day (Canada)  
Yom Kippur  
Columbus Day (obsvd.)

287  
14 Tuesday  
Fall

288  
15 Wednesday

289  
16 Thursday  
Jesse Harris' Birthday

290  
17 Friday  
Bernice's Birthday  
Full Moon

291  
18 Saturday  
David - Anne's Birthday

292  
19 Sunday

OCTOBER

S	M	T	W	T	F	S
		1	2	3	4	5
6	7	8	9	10	11	12
13	14	15	16	17	18	19
20	21	22	23	24	25	26
27	28	29	30	31		



Detail  
 Studied Fall, 1873  
 oil on canvas, 21 1/2 x 23 1/4"  
 Philadelphia Museum of Art  
 Given by Mr. and Mrs. Hughes  
 Norment in honor of  
 William H. Denner

293

20

Monday

294

21

Tuesday

295

22

Wednesday

296

23

Thursday

297

24

Friday

298

25

Saturday

*Frederick Stoll*

Third Quarter

299

26

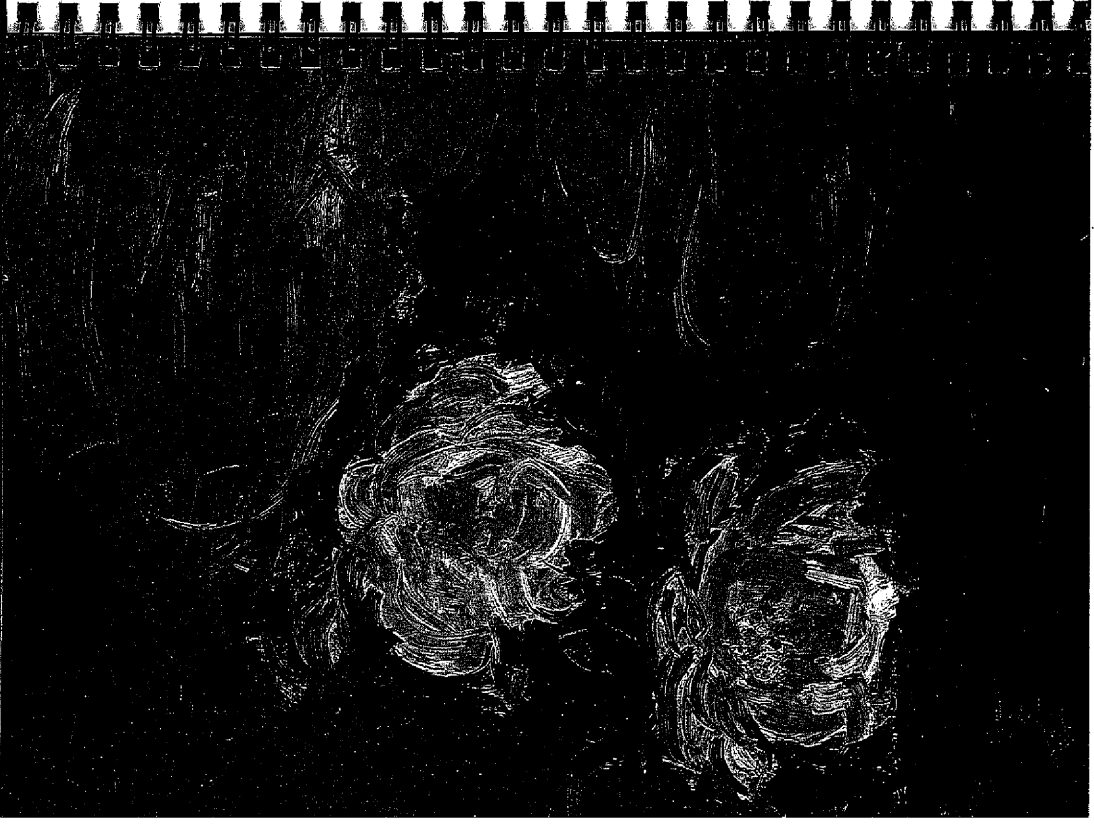
Sunday

OCTOBER

1	m	1	w	1	f	3
2		2		2		4
3		3		3		5
4		4		4		6
5		5		5		7
6		6		6		8
7		7		7		9
8		8		8		10
9		9		9		11
10		10		10		12
11		11		11		13
12		12		12		14
13		13		13		15
14		14		14		16
15		15		15		17
16		16		16		18
17		17		17		19
18		18		18		20
19		19		19		21
20		20		20		22
21		21		21		23
22		22		22		24
23		23		23		25
24		24		24		26
25		25		25		27
26		26		26		28
27		27		27		29
28		28		28		30
29		29		29		31



detail,  
*Wheatfield*, ca.1903  
 oil on canvas, 26x41"  
 Los Angeles County  
 Museum of Art  
 Request of Mrs. Fred Hathaway  
 Blaby



300

27

Monday

301

28

Tuesday

302

29

Wednesday

303

30

Thursday

304

31

Friday

Halloween

305

1

Saturday

306

2

Sunday

New Moon

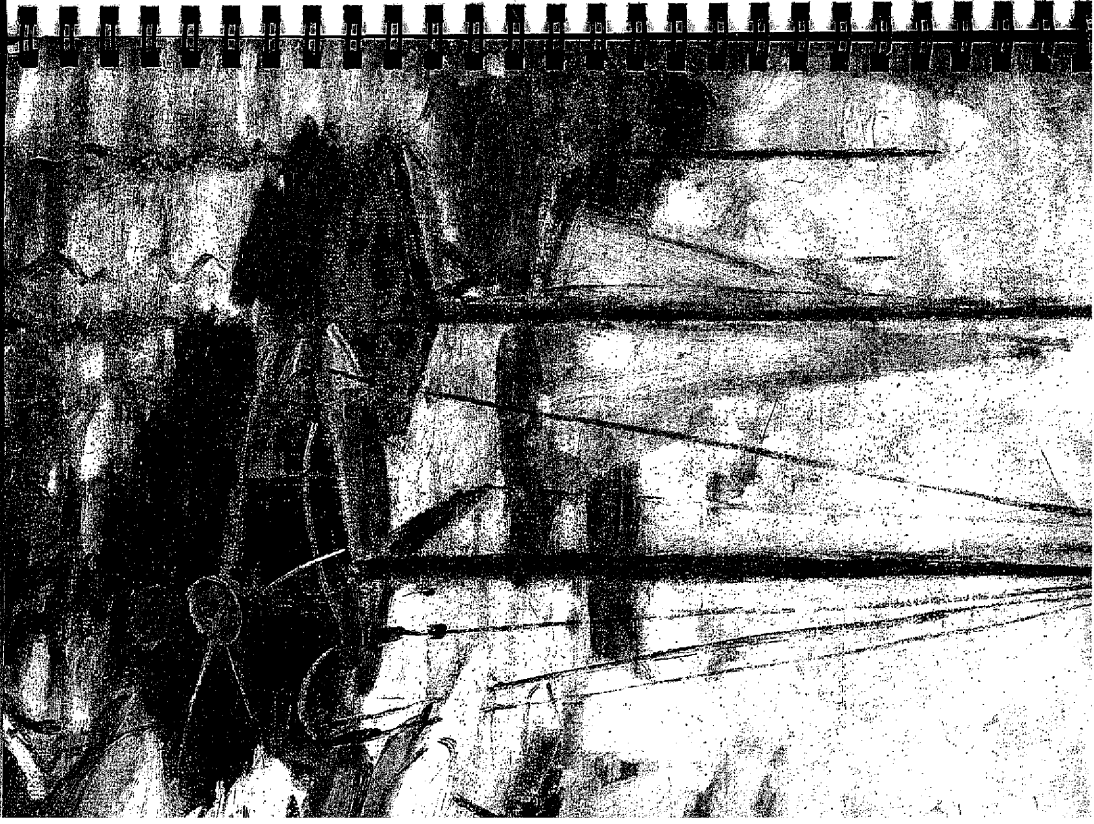
OCT/NOV

number

S	M	T	W	T	F	S
2	3	4	5	6	7	8
9	10	11	12	13	14	15
16	17	18	19	20	21	22
23	24	25	26	27	28	29
30						



detail.  
*bequest of Agnes, ex  
 Rein-Gemmiller (Schubert  
 on the Stamp, 31/4 x 23/8  
 oil on canvas, Museum of  
 The Fine Arts, Museum of  
 San Francisco  
 Gift of Stella and Bruno Adriani*



3 *Verse Bible*

Monday

4

Tuesday

*Verse*

5

Wednesday

6

Thursday

*1-3 page*

7

Friday

8

Saturday

*Card - Verse*

*First Quarter*

9

Sunday

*Verse Bible*

NOVEMBER

S	M	T	W	T	F	S
	1	2	3	4	5	6
7	8	9	10	11	12	13
14	15	16	17	18	19	20
21	22	23	24	25	26	27
28	29	30				



detail.  
 Synagogue: First Synagogue, ca. 1932  
 of the Synagogue, 127 W. 4th St.  
 The Minneapolis Institute  
 of Arts  
 Request of Putnam Dana  
 McKillop

10  
Monday

315

11  
Tuesday

Weekend Day

316

12  
Wednesday

317

13  
Thursday

318

14  
Friday

319

15  
Saturday

320

16  
Sunday

Fall Moon

NOVEMBER

S	M	T	W	T	F	S
	2	3	4	5	6	7
8	9	10	11	12	13	14
15	16	17	18	19	20	21
22	23	24	25	26	27	28
29	30					



detail,  
*A Road in the Epic River*,  
 Mark Greeny, 1988  
 oil on canvas, 23 7/8 x 25 1/2"  
 from the series "Epic River"  
 The William L. Ebbins Collection



321  
17 Monday *Public*

322  
18 Tuesday *Prize*

323  
19 Wednesday

324  
20 Thursday

325  
21 Friday *Public Amusements R.P. 1884*

326  
22 Saturday *JFK R.P. 1913*

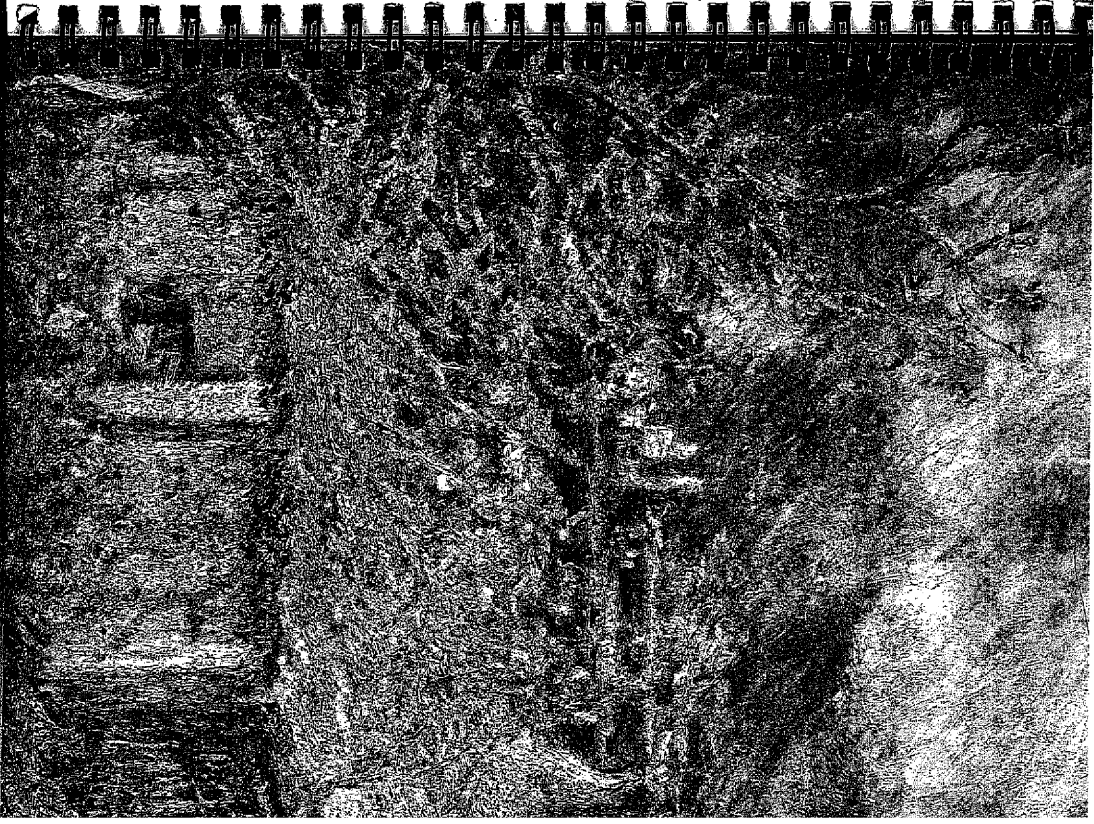
327  
23 Sunday

NOVEMBER

	S	M	T	W	T	F	S
1							1
2		3	4	5	6	7	8
9	10	11	12	13	14	15	16
17	18	19	20	21	22	23	24
25	26	27	28	29	30		



detail.  
Admission  
The Cardinal Museum  
Gift of Mr. and Mrs. J.H. Wolfe



Monday

Third Quarter

24

329

Tuesday

25

330

Wednesday

26

331

Thursday

27

Mr. Duvie's  
and family  
Thanking Day

332

Friday

28

333

Saturday

29

334

Sunday

30

NOVEMBER

S	M	T	W	T	F	S
	2	3	4	5	6	7
8	9	10	11	12	13	14
15	16	17	18	19	20	21
22	23	24	25	26	27	28
29	30					



detail.  
 Waterloo Bridge, London,  
 at sunset, 1904  
 oil on canvas, 25 1/2 x 36 1/2"  
 National Gallery of Art,  
 Washington D.C.  
 Collection of Mr. and Mrs.  
 Paul Mellon

335

1  
Monday

New Moon

336

2  
Tuesday

337  
*Marcelle King Blay*

3  
Wednesday

338

4  
Thursday

339

5  
Friday

340

6  
Saturday

341  
*Van Der Kip 1622*

7  
Sunday  
*Chris Blumenthal ?*

DECEMBER

5	m	t	w	t	f	s
7	1	2	3	4	5	6
14	8	9	10	11	12	13
21	15	16	17	18	19	20
28	22	23	24	25	26	27
29	30	31				



detail,  
Palazzo del Male, Venice  
1608  
oil on canvas, 24 1/2 x 31 1/2"  
National Gallery of Art,  
Washington D.C.  
Chester Dale Collection

342  
8 Monday First Quarter

343  
9 Tuesday Chris Blumberg (Misses)

344  
10 Wednesday Paula Garrison Mrs. Lynn

345  
11 Thursday

346  
12 Friday Dick Rip 1912

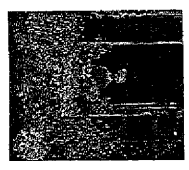
347  
13 Saturday Tom & Carol Ann

348  
14 Sunday Margie Mac Miller Rip 1874

349  
15 Sunday

DECEMBER

1	m	1	w	1	f	1
2	t	2	t	2	s	2
3	w	3	w	3	s	3
4	t	4	t	4	s	4
5	f	5	f	5	s	5
6	s	6	s	6	s	6
7	s	7	s	7	s	7
8	m	8	m	8	m	8
9	t	9	t	9	t	9
10	w	10	w	10	w	10
11	t	11	t	11	t	11
12	f	12	f	12	f	12
13	s	13	s	13	s	13
14	s	14	s	14	s	14
15	m	15	m	15	m	15
16	t	16	t	16	t	16
17	w	17	w	17	w	17
18	t	18	t	18	t	18
19	f	19	f	19	f	19
20	s	20	s	20	s	20
21	s	21	s	21	s	21
22	m	22	m	22	m	22
23	t	23	t	23	t	23
24	w	24	w	24	w	24
25	t	25	t	25	t	25
26	f	26	f	26	f	26
27	s	27	s	27	s	27
28	s	28	s	28	s	28
29	m	29	m	29	m	29
30	t	30	t	30	t	30
31	w	31	w	31	w	31



detail,  
Gentle of Her Window, Agreement,  
1873  
oil on canvas, 23 1/4 x 18 1/4"  
Virginia Museum of Fine Arts  
Collection of Mr. and Mrs.  
Paul Mellon



22 Monday

23 Tuesday

24 Wednesday

Third Quarter

Fanny Johnson Pattern Bldg

25 Thursday

Dinner

Carl-Anne - Elks 21

Christmas Day

26 Friday

27 Saturday

Hanukkah

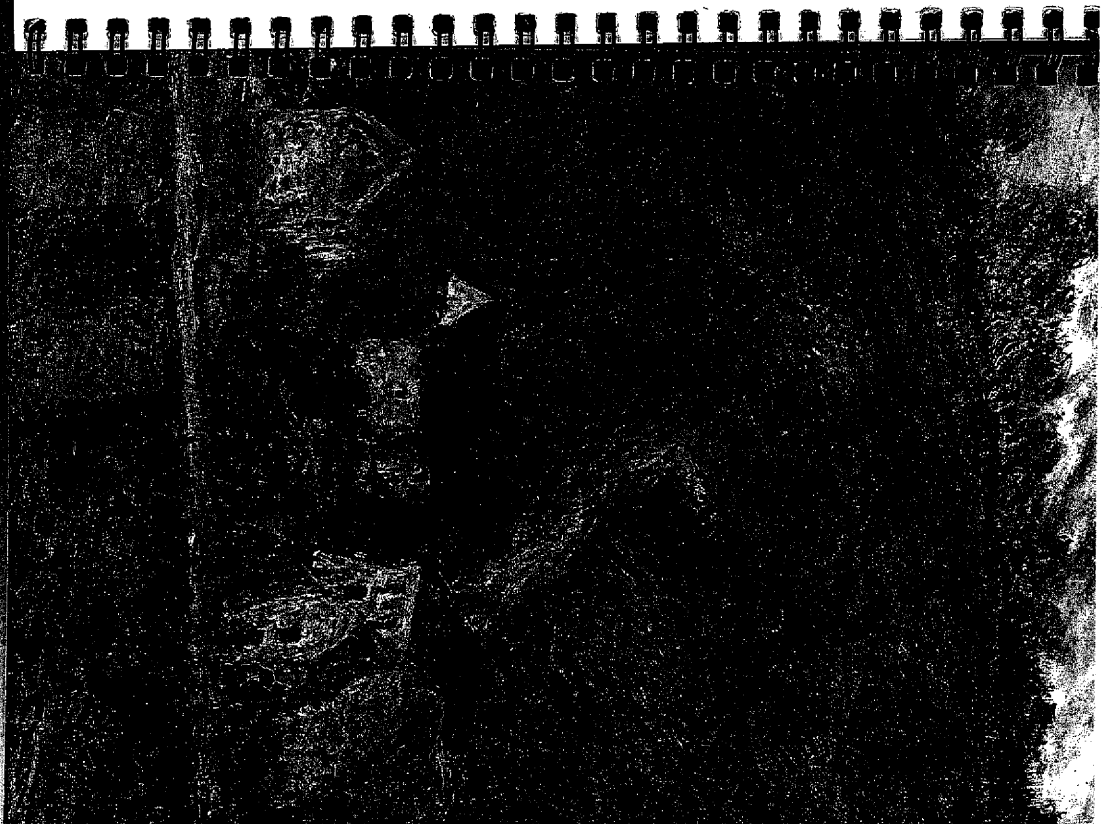
28 Sunday

DECEMBER

1	m	1	w	1	f
2	1	2	3	4	5
3	2	3	4	5	6
4	3	4	5	6	7
5	4	5	6	7	8
6	5	6	7	8	9
7	6	7	8	9	10
8	7	8	9	10	11
9	8	9	10	11	12
10	9	10	11	12	13
11	10	11	12	13	14
12	11	12	13	14	15
13	12	13	14	15	16
14	13	14	15	16	17
15	14	15	16	17	18
16	15	16	17	18	19
17	16	17	18	19	20
18	17	18	19	20	21
19	18	19	20	21	22
20	19	20	21	22	23
21	20	21	22	23	24
22	21	22	23	24	25
23	22	23	24	25	26
24	23	24	25	26	27
25	24	25	26	27	28
26	25	26	27	28	29
27	26	27	28	29	30
28	27	28	29	30	31
29	28	29	30	31	
30	29	30	31		
31	30	31			



detail  
 Landscape, 1889  
 oil on canvas, 29 x 36 1/2"  
 Philadelphia Museum of Art  
 The William L. Ekins Collection



29  
Monday

30  
Tuesday

31  
Wednesday

1  
Thursday

2  
Friday

3  
Saturday

4  
Sunday

DEC/JAN

January

s	m	t	w	t	f	s
1	2	3	4	5	6	7
8	9	10	11	12	13	14
15	16	17	18	19	20	21
22	23	24	25	26	27	28
29	30	31				

364

New Moon

1987



Pierre Augere Renoir  
detail.  
Moses Reining in his Garden  
at Argenteuil, 1873  
oil on canvas, 18x24x31 1/2"  
Bridgeway Art Museum, Portland  
Purchase of Anne Parrish Trustell,  
1971/84

1987

Notes

Thursday April 16 Allen Dantist

JANUARY

	S	M	T	W	T	F	S
4	5	6	7	8	9	10	11
12	13	14	15	16	17	18	19
20	21	22	23	24	25	26	27
28	29	30	31				

MAY

	S	M	T	W	T	F	S
3	4	5	6	7	8	9	10
11	12	13	14	15	16	17	18
19	20	21	22	23	24	25	26
27	28	29	30	31			

SEPTEMBER

	S	M	T	W	T	F	S
6	7	8	9	10	11	12	13
14	15	16	17	18	19	20	21
22	23	24	25	26	27	28	29
30							

FEBRUARY

	S	M	T	W	T	F	S
1	2	3	4	5	6	7	8
9	10	11	12	13	14	15	16
17	18	19	20	21	22	23	24
25	26	27	28	29			

JUNE

	S	M	T	W	T	F	S
7	8	9	10	11	12	13	14
15	16	17	18	19	20	21	22
23	24	25	26	27	28	29	30

OCTOBER

	S	M	T	W	T	F	S
4	5	6	7	8	9	10	11
12	13	14	15	16	17	18	19
20	21	22	23	24	25	26	27
28	29	30	31				

MARCH

	S	M	T	W	T	F	S
1	2	3	4	5	6	7	8
9	10	11	12	13	14	15	16
17	18	19	20	21	22	23	24
25	26	27	28	29	30	31	

JULY

	S	M	T	W	T	F	S
5	6	7	8	9	10	11	12
13	14	15	16	17	18	19	20
21	22	23	24	25	26	27	28
29	30	31					

NOVEMBER

	S	M	T	W	T	F	S
1	2	3	4	5	6	7	8
9	10	11	12	13	14	15	16
17	18	19	20	21	22	23	24
25	26	27	28	29	30	31	

APRIL

	S	M	T	W	T	F	S
5	6	7	8	9	10	11	12
13	14	15	16	17	18	19	20
21	22	23	24	25	26	27	28
29	30						

AUGUST

	S	M	T	W	T	F	S
2	3	4	5	6	7	8	9
10	11	12	13	14	15	16	17
18	19	20	21	22	23	24	25
26	27	28	29	30	31		

DECEMBER

	S	M	T	W	T	F	S
6	7	8	9	10	11	12	13
14	15	16	17	18	19	20	21
22	23	24	25	26	27	28	29
30	31						



Notes