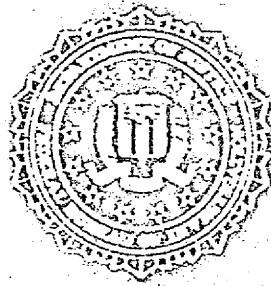


# THE ASSASSINATION OF PRESIDENT JOHN F. KENNEDY

NOVEMBER 22, 1963



## KILLING OF DALLAS PATROLMAN

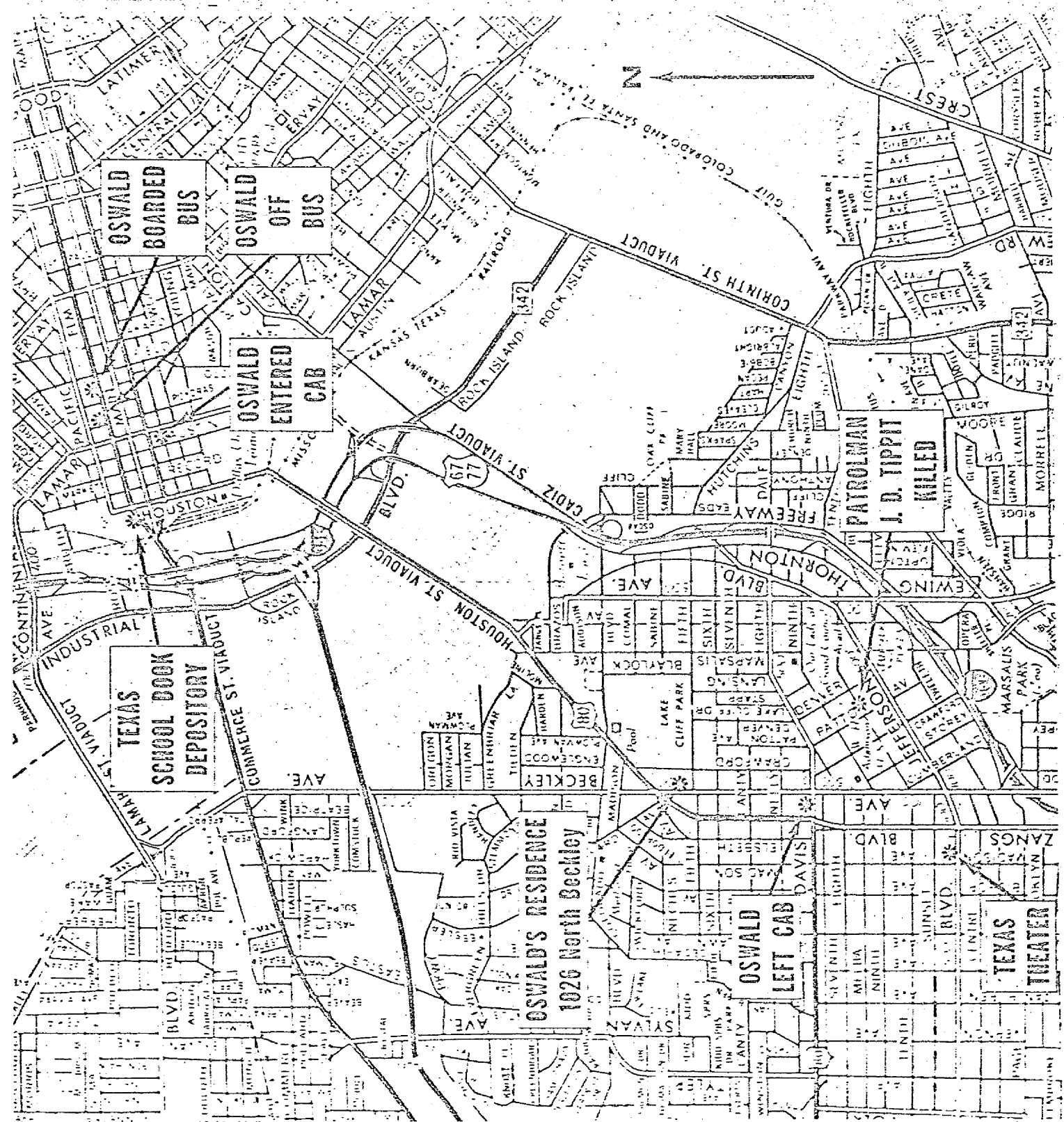
J. D. THIPPETT

FEDERAL BUREAU OF INVESTIGATION  
UNITED STATES DEPARTMENT OF JUSTICE  
John Edgar Hoover, Director

# TABLE OF CONTENTS

- A. MAP OF DALLAS SHOWING WHEREABOUTS OF OSWALD AFTER THE ASSASSINATION
- B. DIAGRAM OF GENERAL VICINITY OF TIPPIT KILLING SITE
  - 1. AERIAL VIEW - GENERAL
- C. DIAGRAM AND PHOTOGRAPHS OF IMMEDIATE AREA OF TIPPIT KILLING SITE
  - 2. AERIAL VIEW
  - 3. MARKHAM AT CORNER
  - 4. MARKHAM AT CORNER
  - 5. SQUAD CAR, AS SEEN FROM CORNER
  - 6. SQUAD CAR - LEFT REAR
  - 7. CAB, AS SEEN FROM CORNER
  - 8. LOCATION OF CAB
  - 9. SCOGGINS' VIEW OF SQUAD CAR
  - 10. LOCATION OF SQUAD CAR
  - 11. POSITIONS OF CAB AND SQUAD CAR
  - 12. SQUAD CAR - RIGHT SIDE
  - 13. SIMULATED POSITIONS - TIPPIT AND OSWALD
  - 14. SQUAD CAR - FRONT
  - 15. SQUAD CAR - FRONT
  - 16. SIMULATED POSITIONS - TIPPIT AND OSWALD
  - 17. SQUAD CAR - SIDE VIEW
  - 18. SIMULATED POSITIONS - TIPPIT AND OSWALD
  - 19. SPOT WHERE TIPPIT FELL
  - 20. POSITIONS OF SQUAD CAR AND CAB
  - 21. VIEW FROM SQUAD CAR TO CAB
  - 22. SHRUB ARRANGEMENT NEAR CAB
  - 23. 400 EAST 10th STREET
- D. DIAGRAM AND PHOTOGRAPHS OF AREA SURROUNDING TIPPIT KILLING SITE
  - 24. MARKHAM RESIDENCE AND WASHATERIA
  - 25. ALLEY ON GETAWAY ROUTE
  - 26. GETAWAY ROUTE - PATTON AVENUE
  - 27. CAR PARKING PATTERN - GETAWAY ROUTE
  - 28. VIEW ALONG GETAWAY ROUTE
  - 29. CALLAWAY'S LOCATION WHEN SAW OSWALD
  - 30. CALLAWAY'S LOCATION WHEN HEARD SHOTS
  - 31. GETAWAY ROUTE - LOOKING TOWARD CAB
  - 32. REYNOLDS USED CAR LOT
  - 33. JEFFERSON-PATTON INTERSECTION
  - 34. USED CAR LOT - 501 EAST JEFFERSON
  - 35. PARKING AREA - REAR OF TEXACO STATION
  - 36. PARKING AREA BEHIND TEXACO STATION
  - 37. PARKING AREA
  - 38. JACKET LOCATION
  - 39. ALLEY BEHIND PARKING LOT
  - 40. OAK CLIFF LIBRARY





Killing Site

General Area

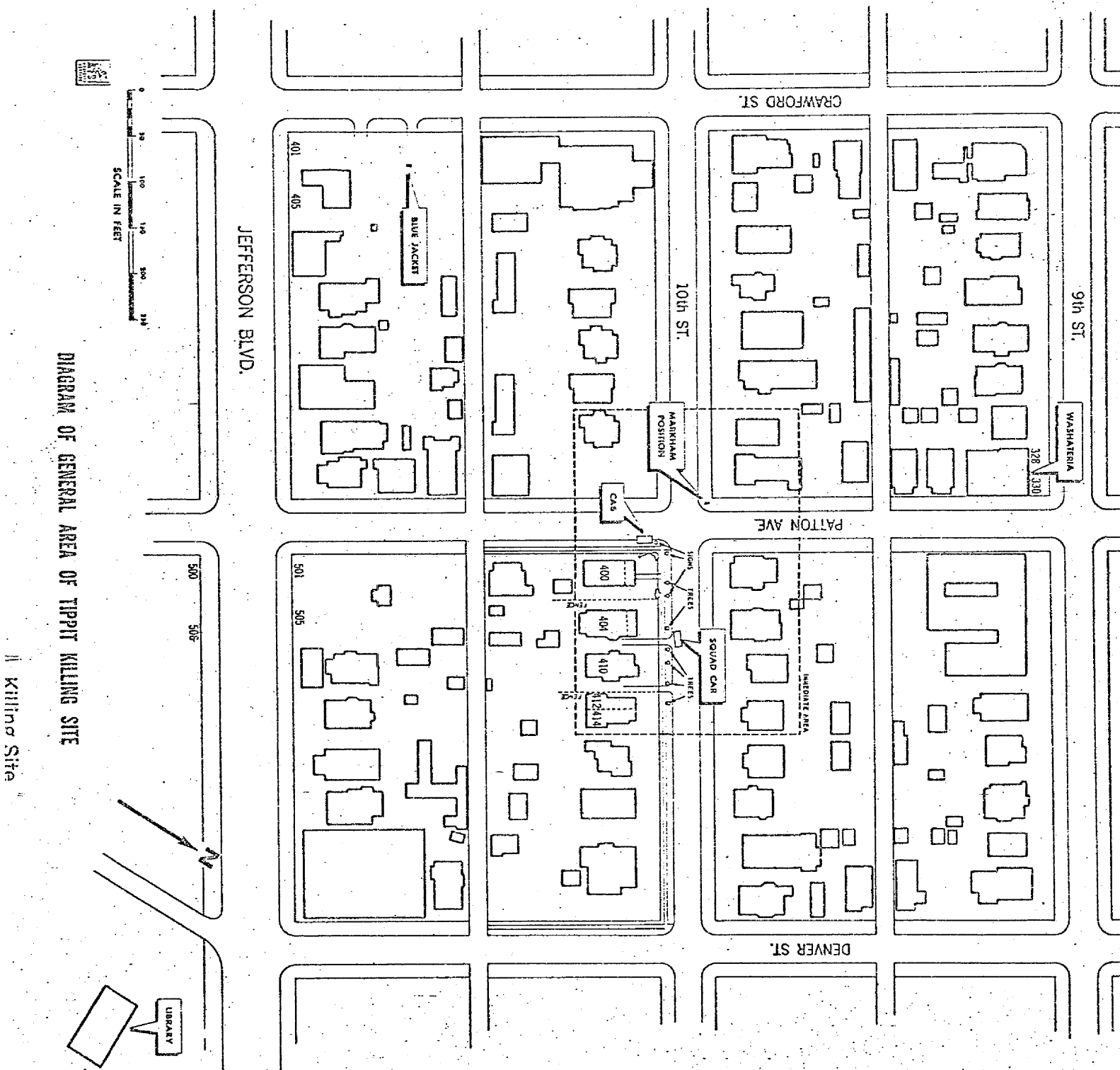


DIAGRAM OF GENERAL AREA OF TIPTON KILLING SITE

II Killing Site

DENVER ST.



PATTON AVE.

TENTH ST.

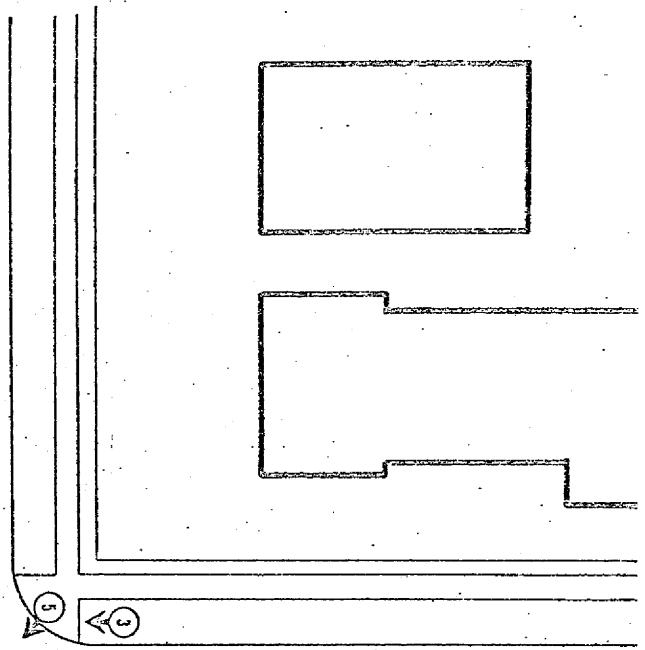
JEFFERSON BLVD.

CRAWFORD

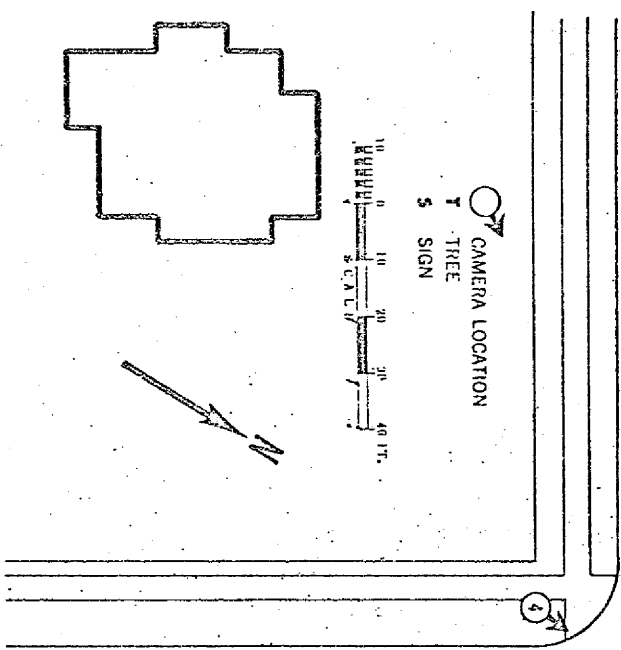
NINTH ST.

1. AERIAL VIEW OF GENERAL VICINITY.

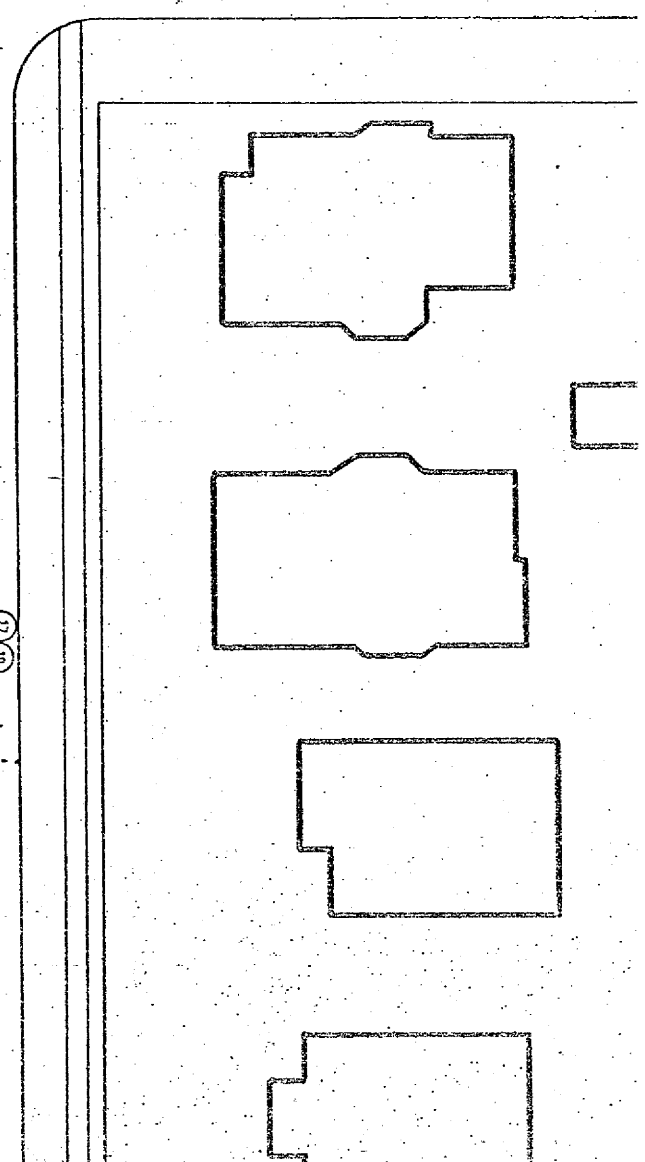
Killing Site



E. 10TH ST.



N. PATTON AVE.



S. PATTON AVE.

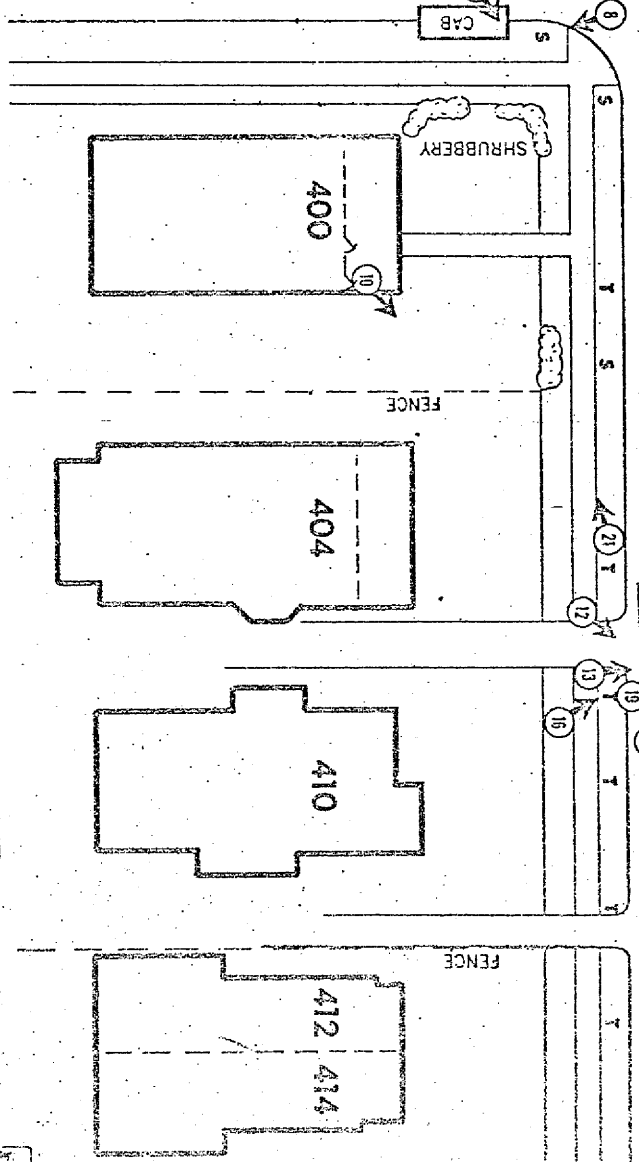


DIAGRAM AND PHOTOGRAPHS OF IMMEDIATE AREA--TIPPI KILLING SITE

ENTH ST.

MARKHAM

SCOGGINS

PATTON

AVE.

NINTH ST.

TIPPIT

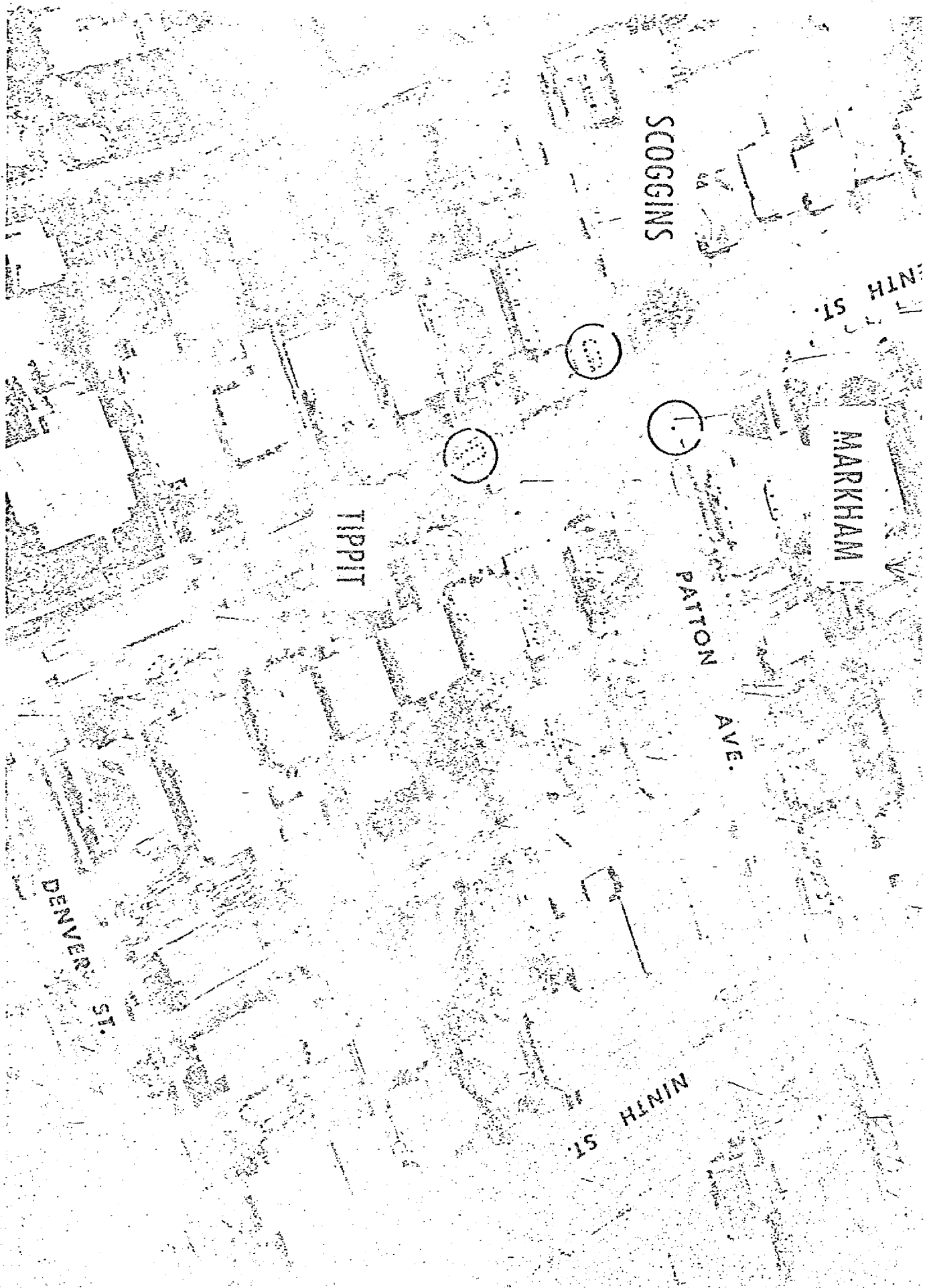
DENVER ST.

2. AERIAL VIEW OF TIPPIT KILLING SITE.

Area Surrounding Killing Site

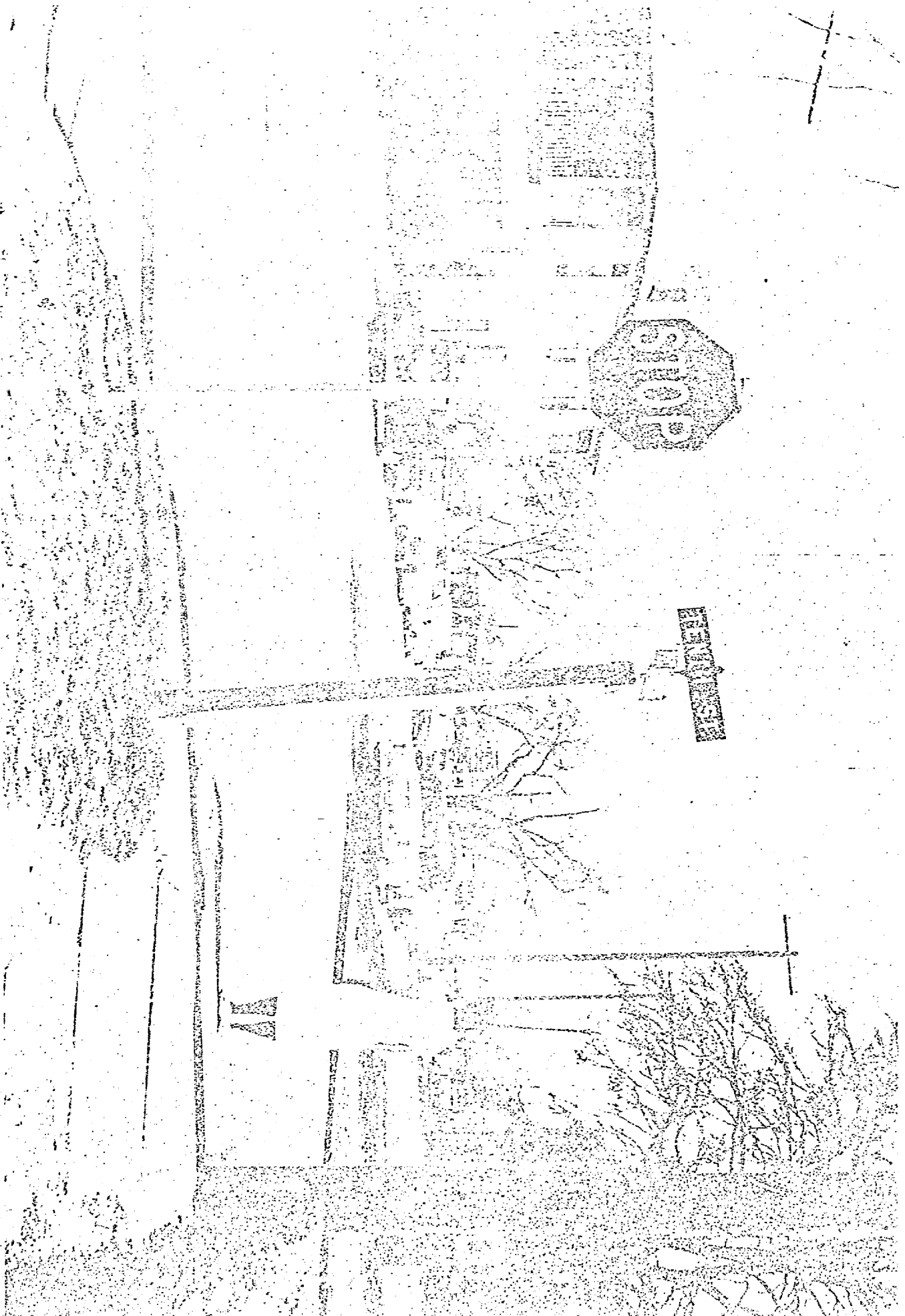


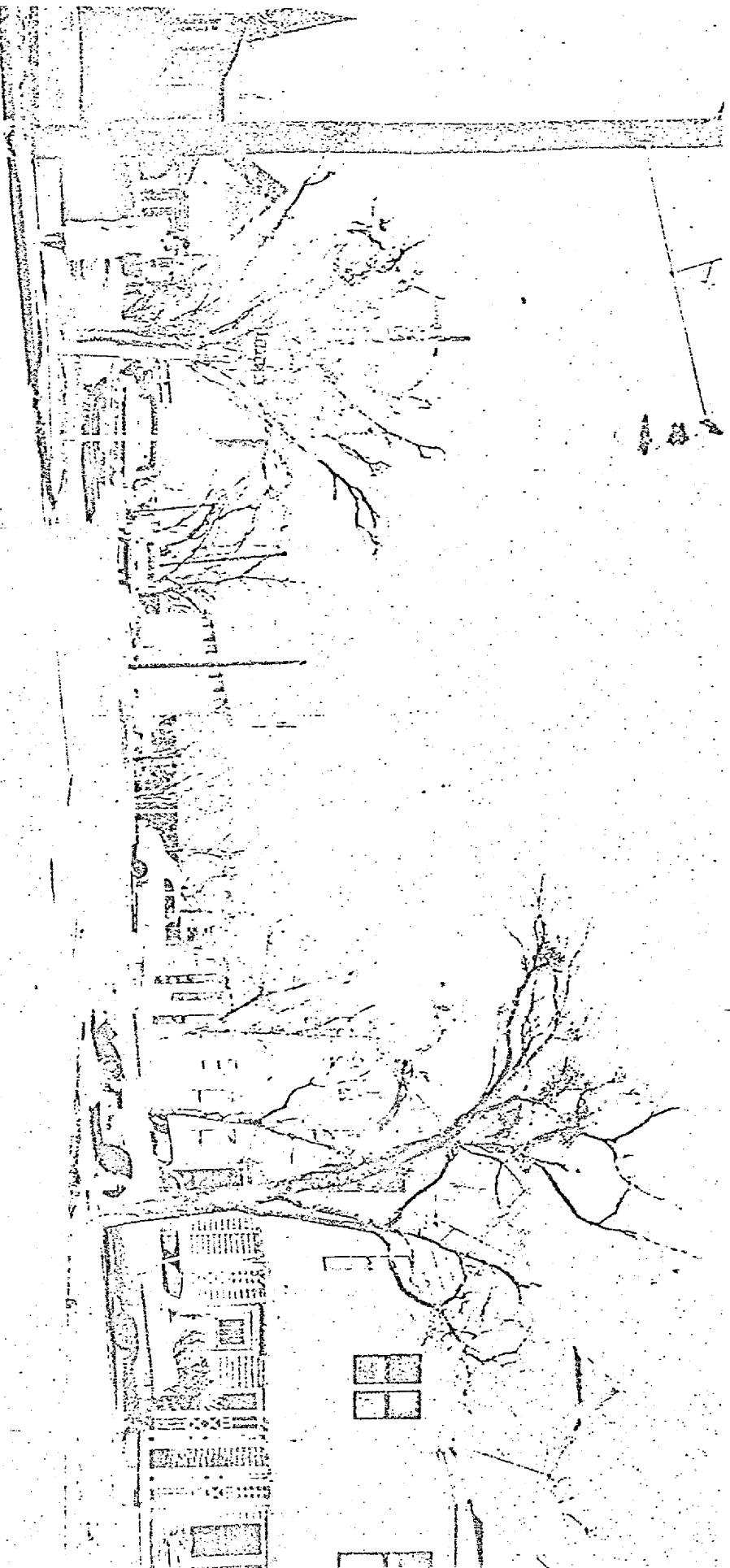
2. AERIAL VIEW OF TIPPIT KILLING SITE.



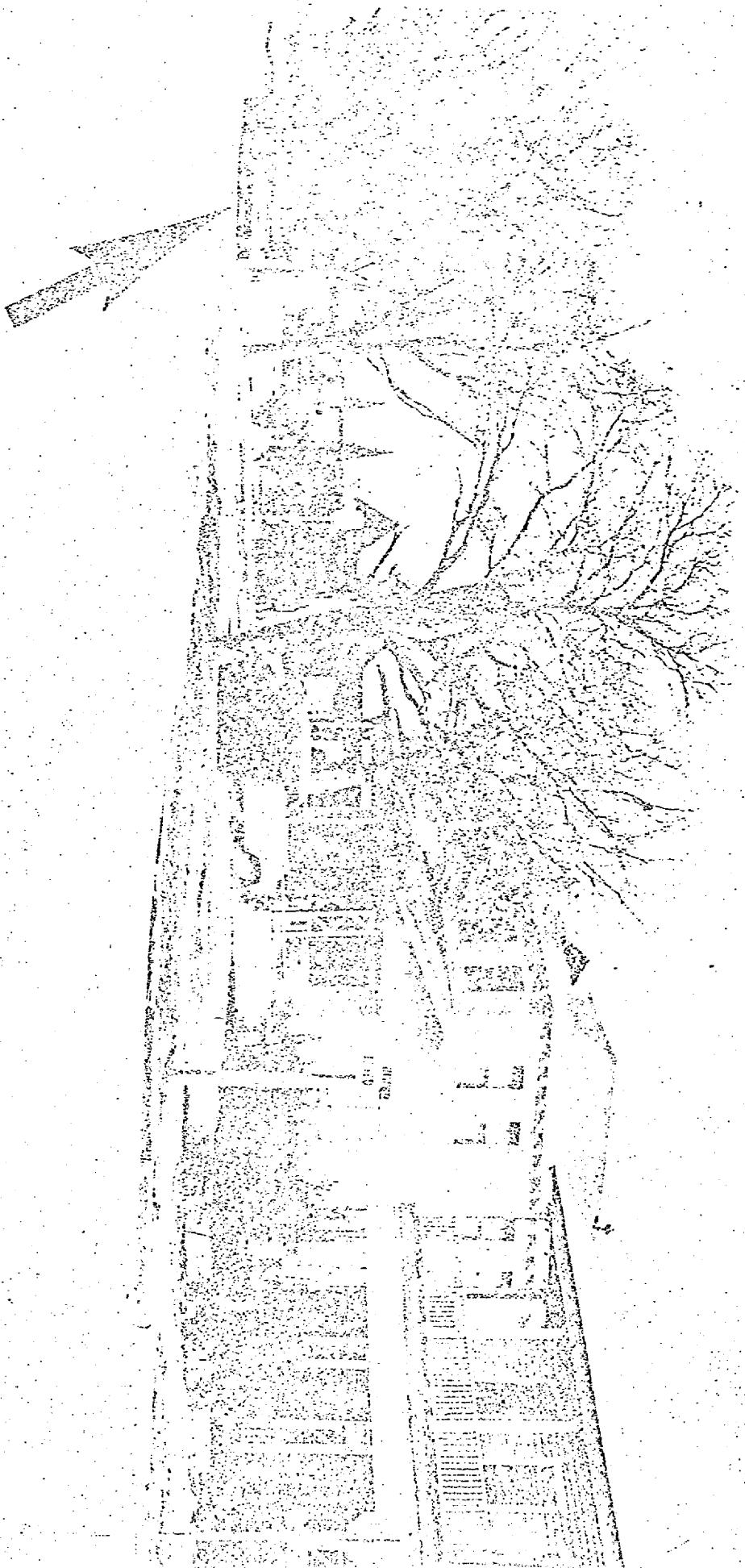
3. MARKHAM STANDING AT CORNER FROM WHICH SHE SAW  
TIPPIT KILLING.

Area Surrounding Killing Site





4. MARKHAM STANDING AT CORNER FROM WHICH SHE SAW  
TIPPIT KILLING.

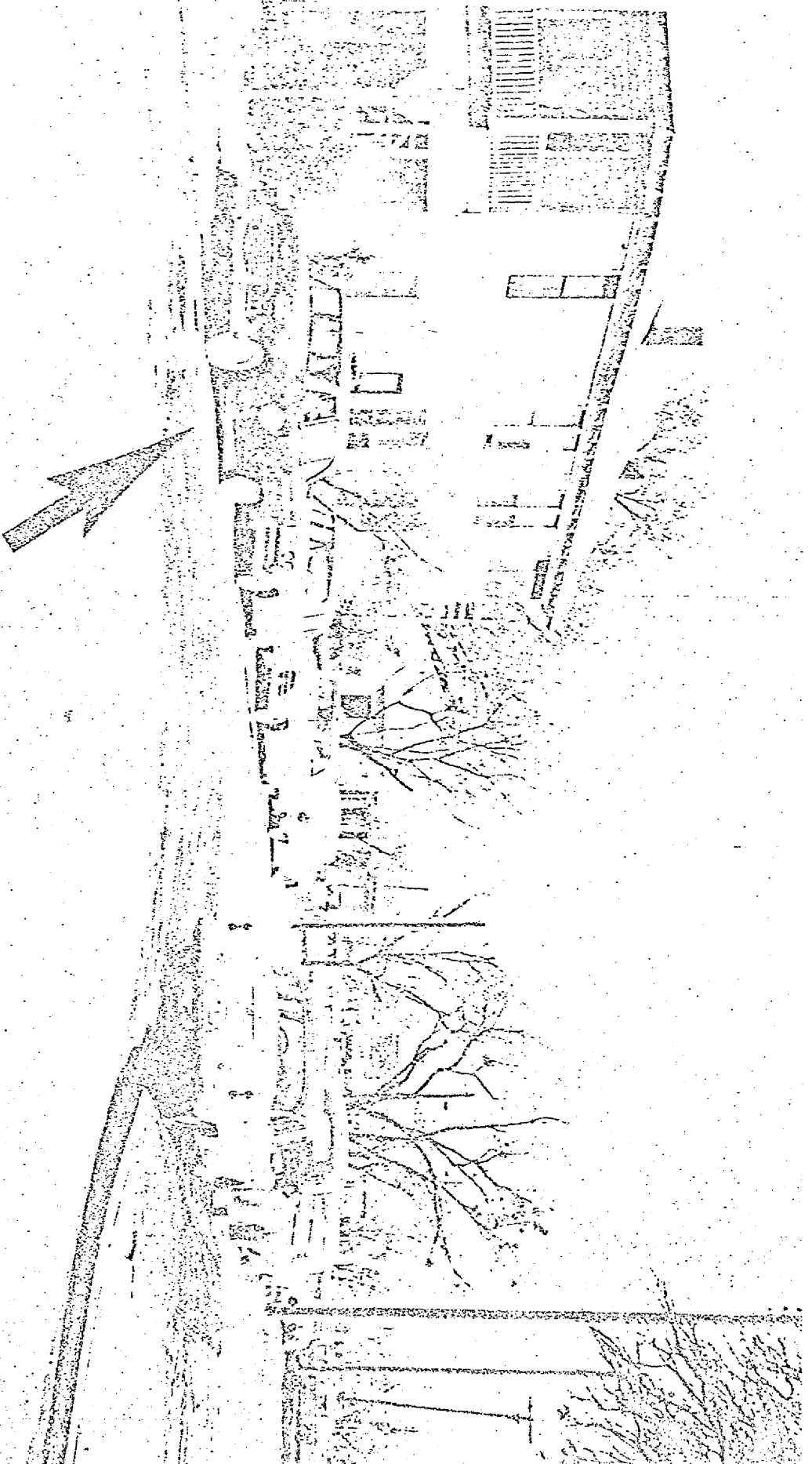


5. VIEW OF SQUAD CAR (ARROW) FROM MARKHAM'S LOCATION.  
(SIMULATED)

6. LEFT REAR OF TIPPIT SQUAD CAR AT KILLING SITE.

Area Surrounding Killing Site

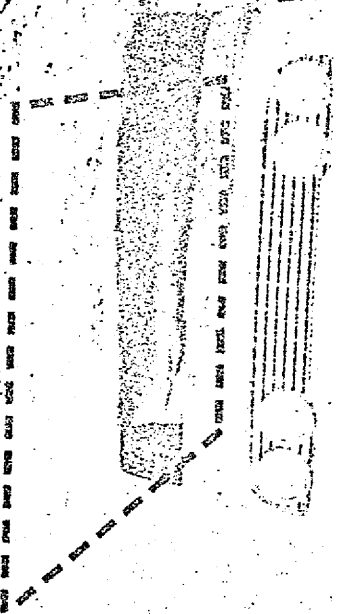




7. VIEW OF SCOGGINS' CAB (ARROW) FROM MARKHAM'S POSITION.

Area Surrounding Killing Site

8. LOCATION OF SCOGGINS' PARKED CAB AT TIME OF SHOOTING.  
(DOTTED LINES)



9. SCOGGINS' VIEW OF TIPPIT SQUAD CAR. (SIMULATED)

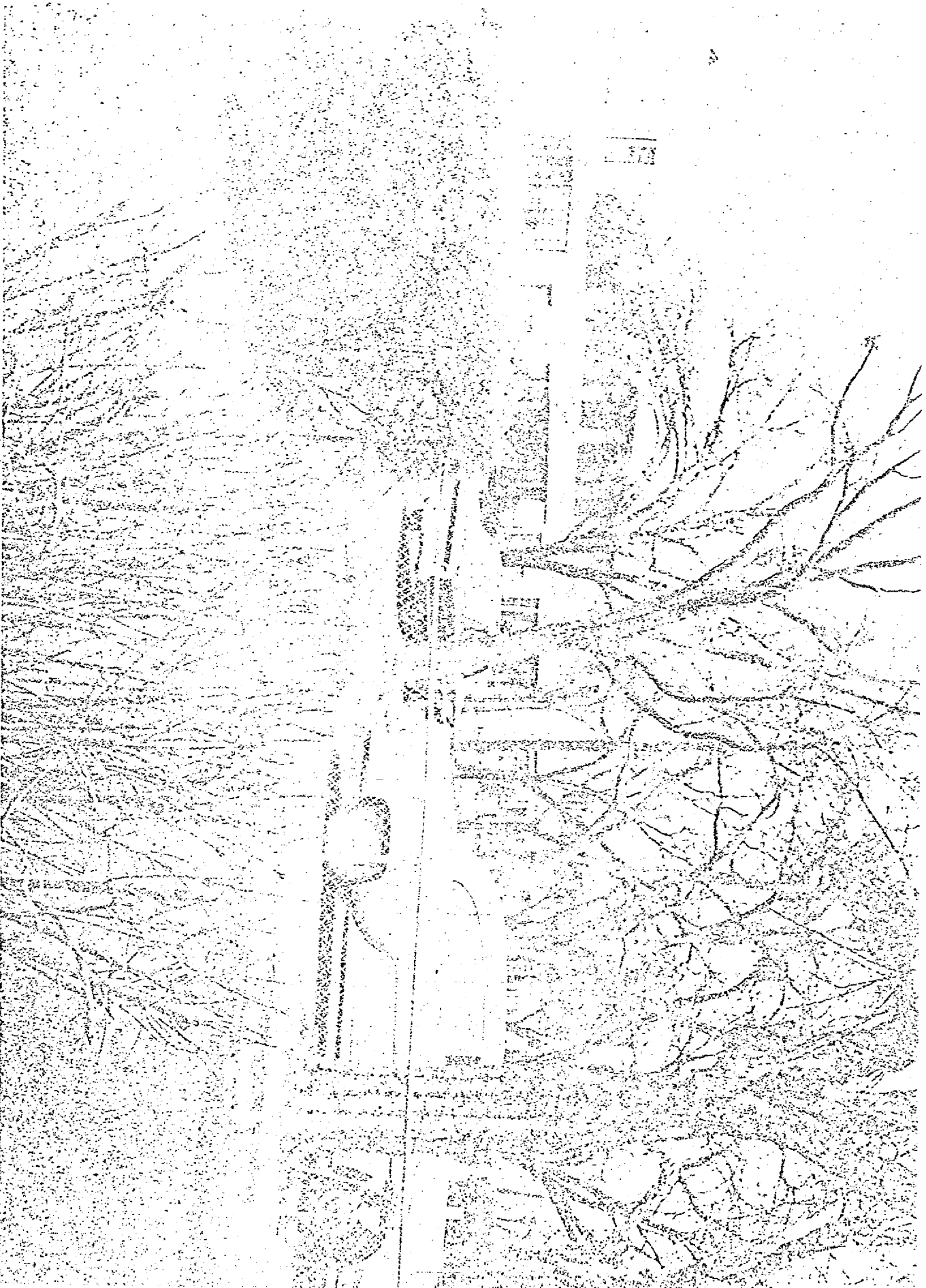
Area Surrounding Killing Site





10. VIEW FROM 400 EAST 10TH STREET SHOWING LOCATION OF  
TIPPIT SQUAD CAR. (SIMULATED)

Area Surrounding Killing Site



11. POSITIONS OF SCOGGINS' CAB AND TIPPIT SQUAD CAR.  
(DOTTED LINES)

Area Surrounding Killing Site



13. SIMULATED POSITIONS OF TIPPIT AND OSWALD.



Area Surrounding Killing Site

46601

14. FRONT OF TIPPIT SQUAD CAR AT KILLING SITE.

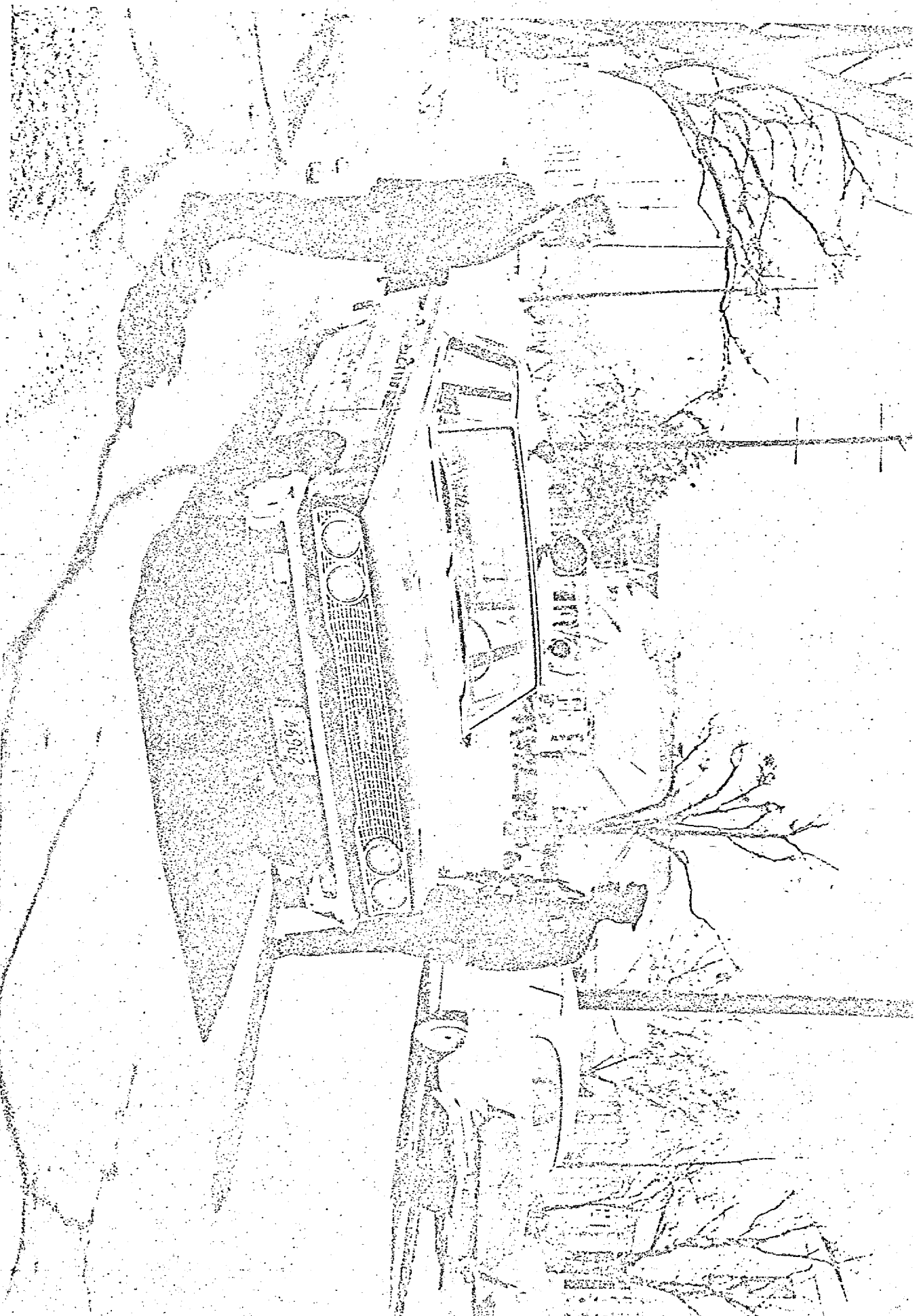
Area Surrounding Killing Site

15. FRONT OF TIPPIT SQUAD CAR SHOWING POSITION AT  
KILLING SITE.

Area Surrounding Killing Site



16. SIMULATED POSITIONS OF TIPPIT AND OSWALD AT TIME OF SHOOTING.

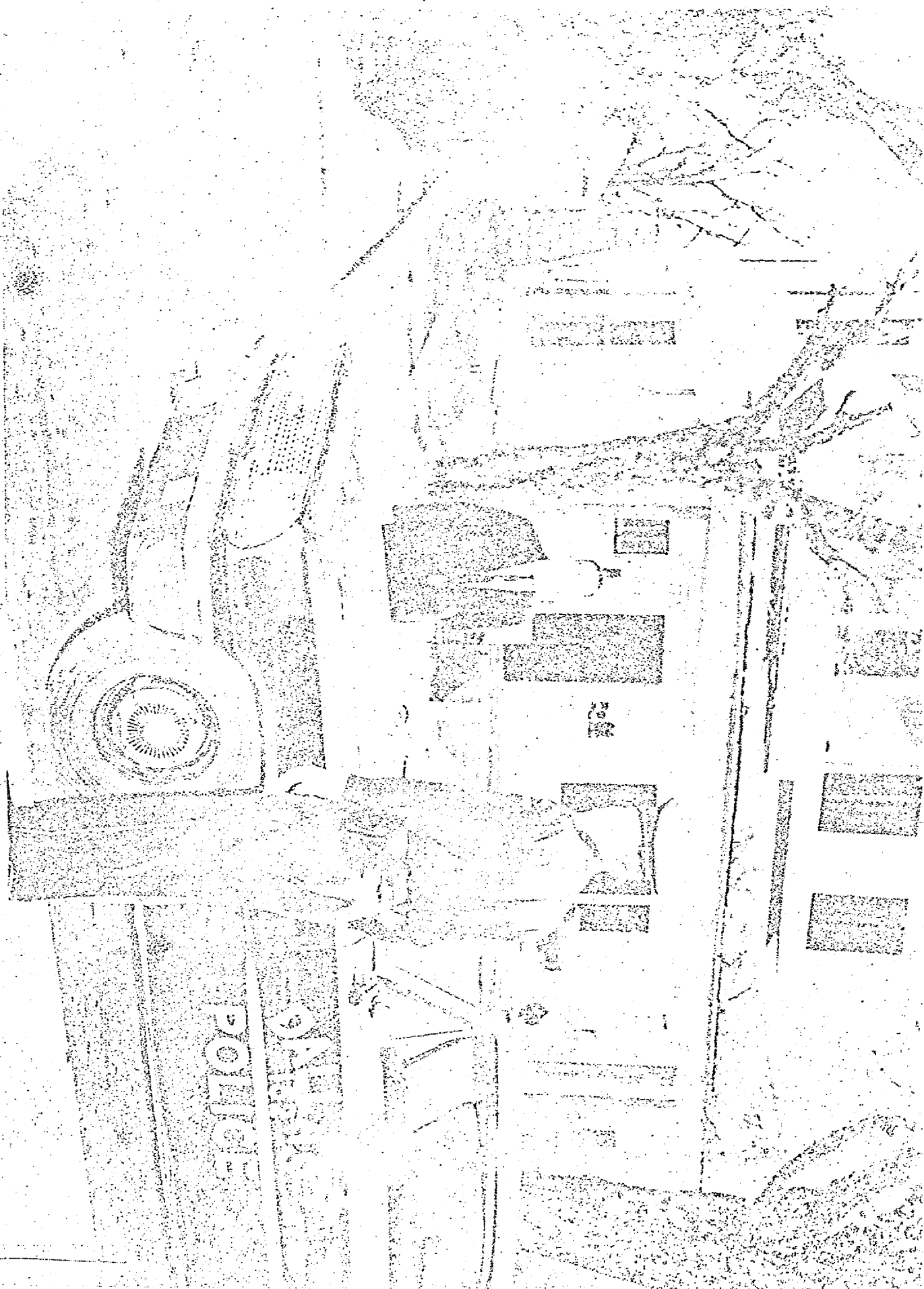


17. SIDE VIEW OF TIPPIT SQUAD CAR.

Area Surrounding Killing Site



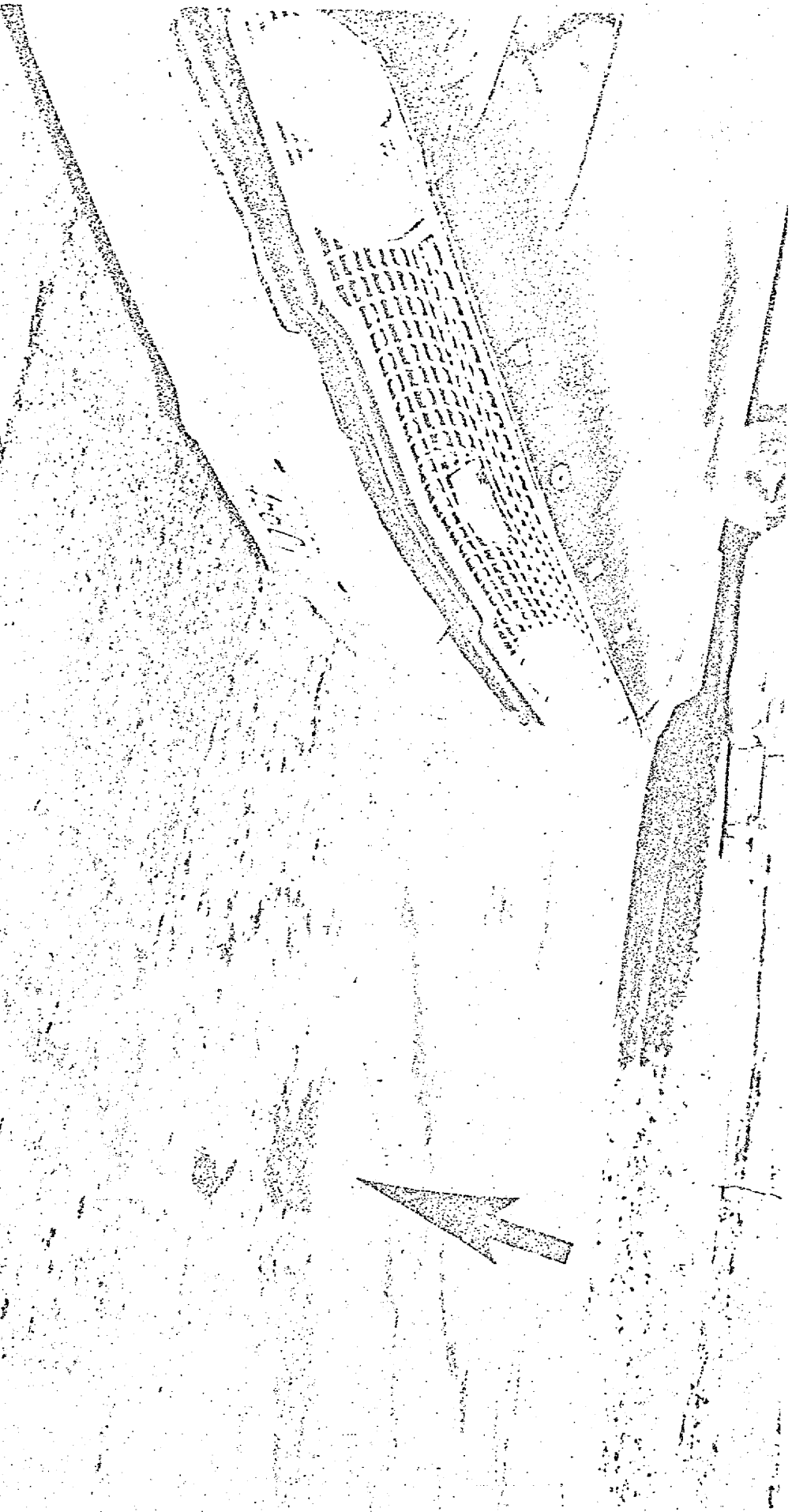
18. SIMULATED POSITIONS OF TIPPIT AND OSWALD AT TIME OF SHOOTING.





19. SPOT WHERE PATROLMAN TIPPIT FELL. (ARROW)

Area Surrounding Killing Site





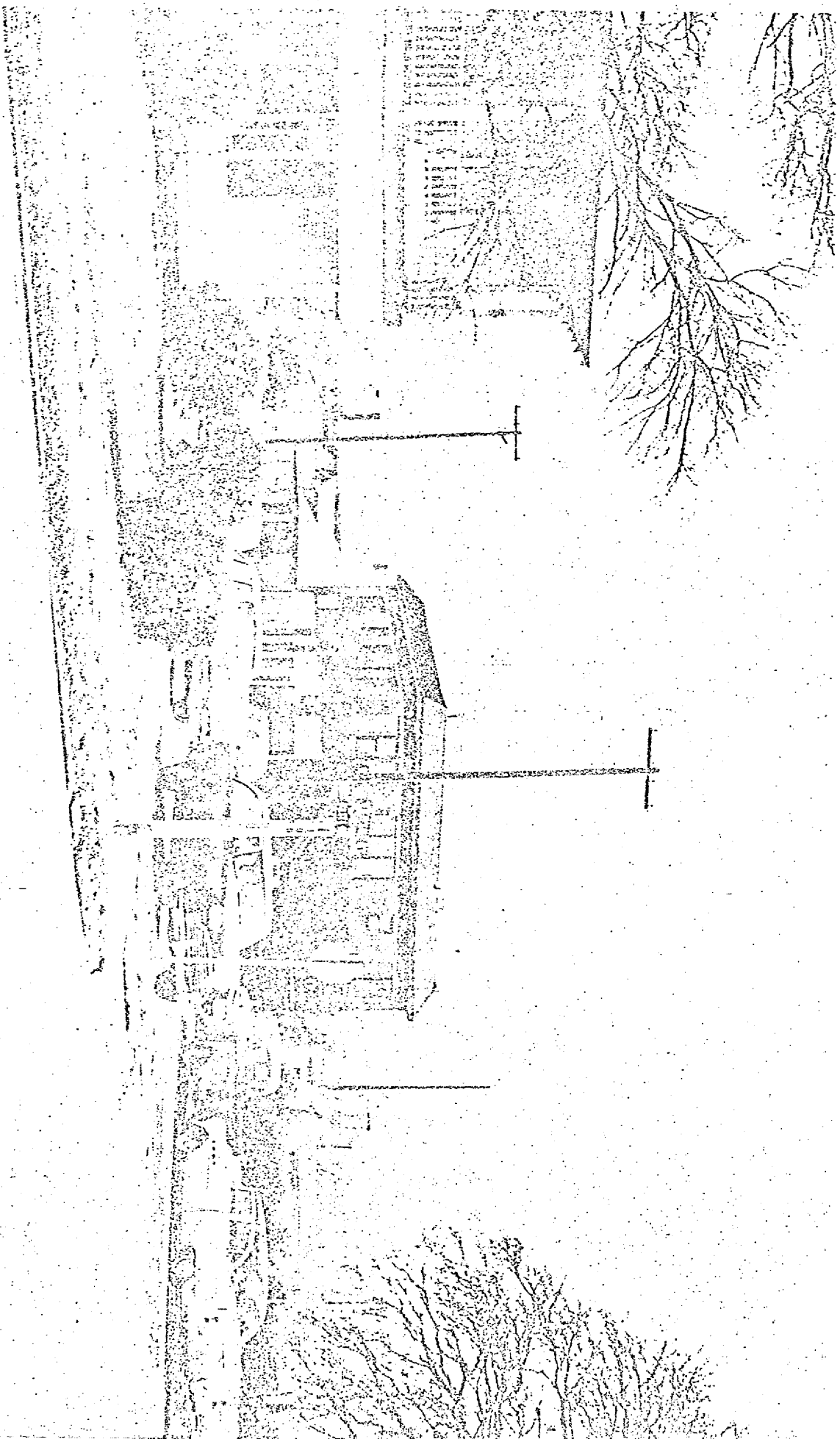
20. ARROWS SHOW POSITIONS OF TIPPIT SQUAD CAR AND  
SCOGGINS' CAB. (SIMULATED)

Area Surrounding Killing Site



21. VIEW FROM TIPPIT SQUAD CAR TO SCOGGINS' CAB.  
(SIMULATED)

22: VIEW OF SHRUB ARRANGEMENT AT 400 EAST 10TH STREET,  
SHOWING SCOGGINS' CAB. (SIMULATED)

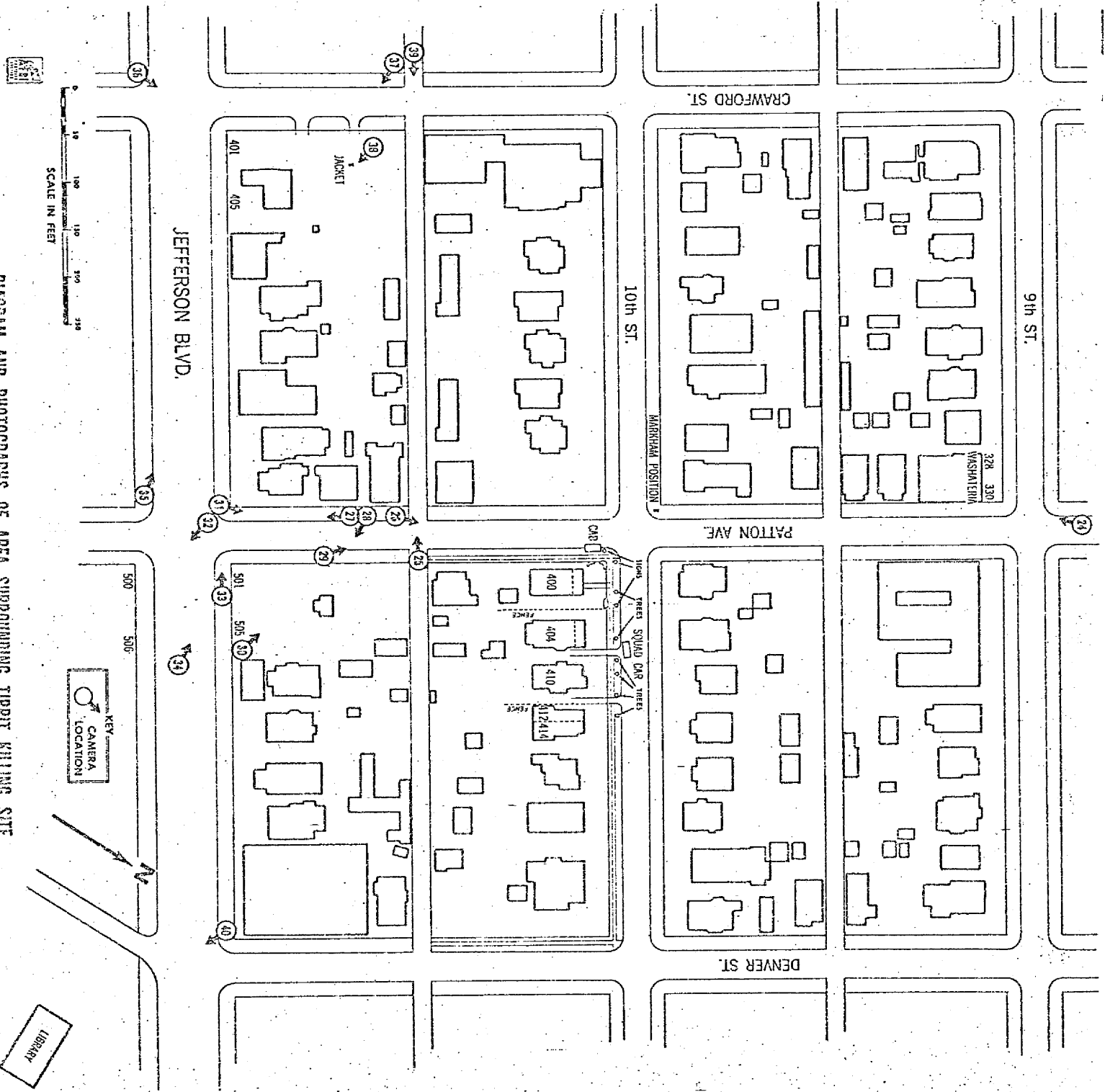




23. FRONT VIEW OF 400 EAST 10TH STREET.

Area Surrounding Killing Site

DIAGRAM AND PHOTOGRAPHS OF AREA SURROUNDING TIPPIT KILLING SITE

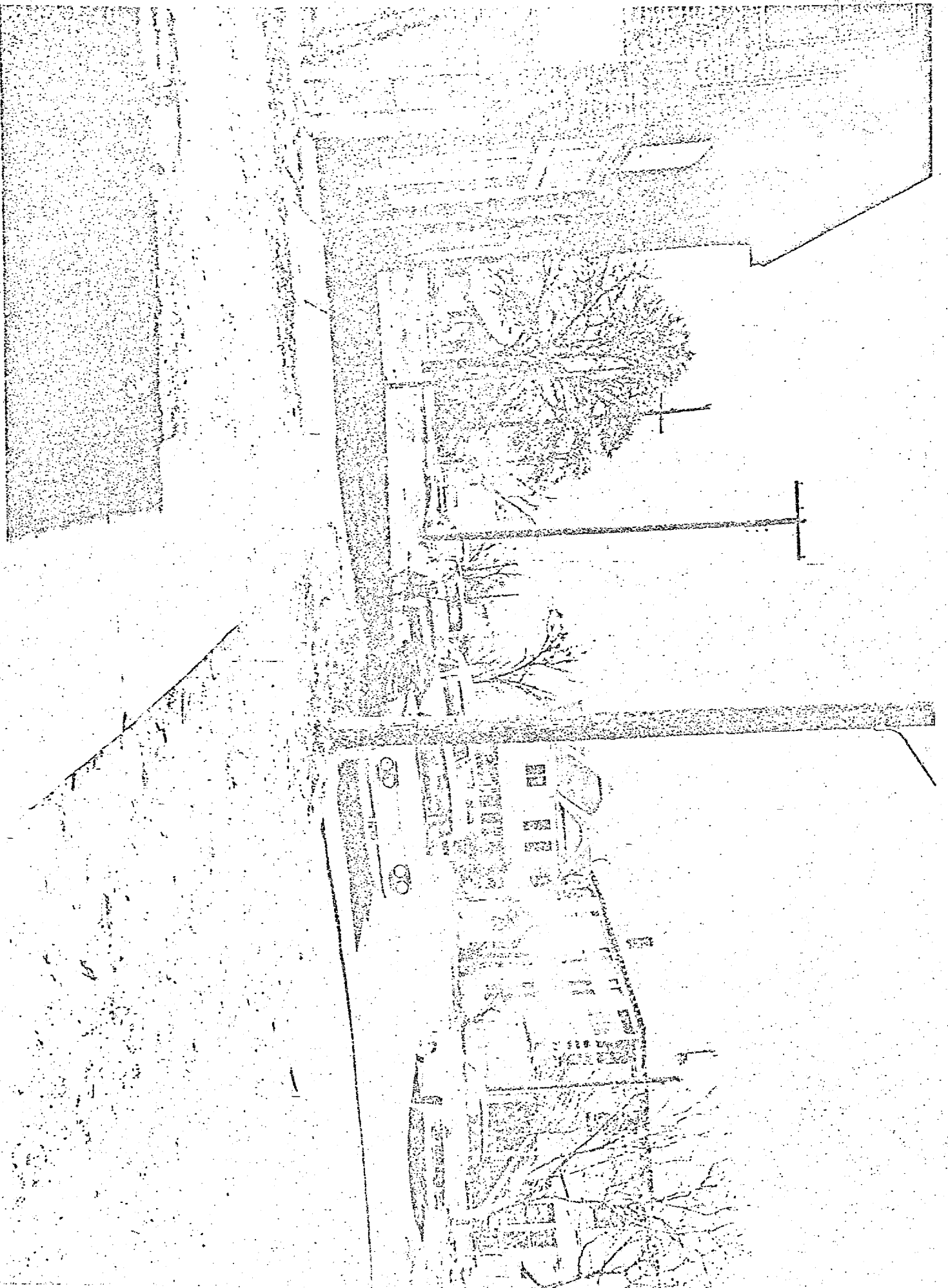


25. VIEW OF ALLEY WHICH OSWALD PASSED AFTER THE SHOOTING OF PATROLMAN TIPPIT.





26. PORTION OF GETAWAY ROUTE ALONG PATTON AVENUE.



27. TYPICAL CAR PARKING PATTERN ON PATTON AVENUE GETAWAY  
ROUTE.



28. VIEW FROM OSWALD'S POSITION ON GETAWAY ROUTE WHERE HE WAS SEEN BY TED CALLAWAY.



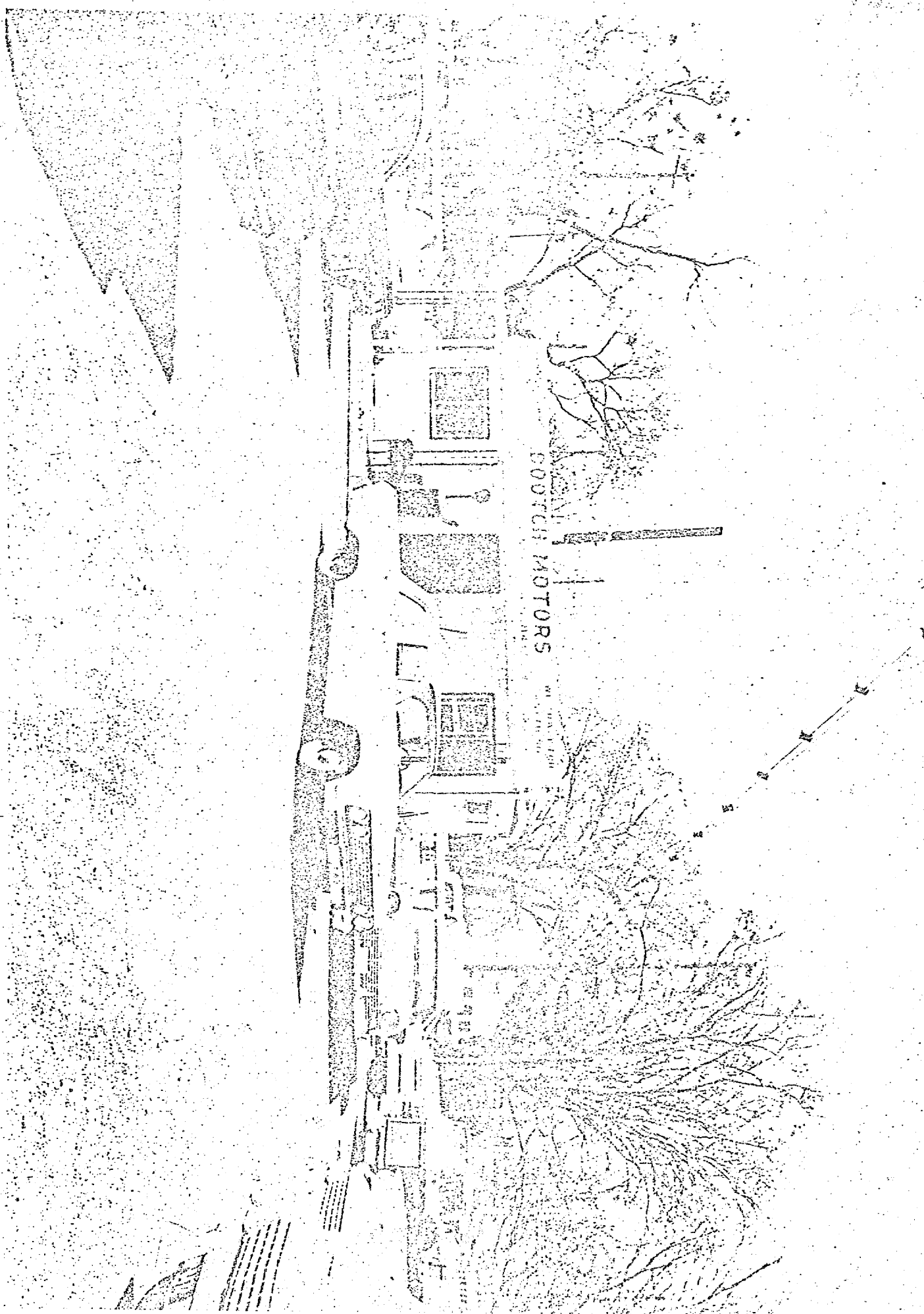
28. VIEW FROM OSWALD'S POSITION ON GETAWAY ROUTE WHERE  
HE WAS SEEN BY TED CALLAWAY.





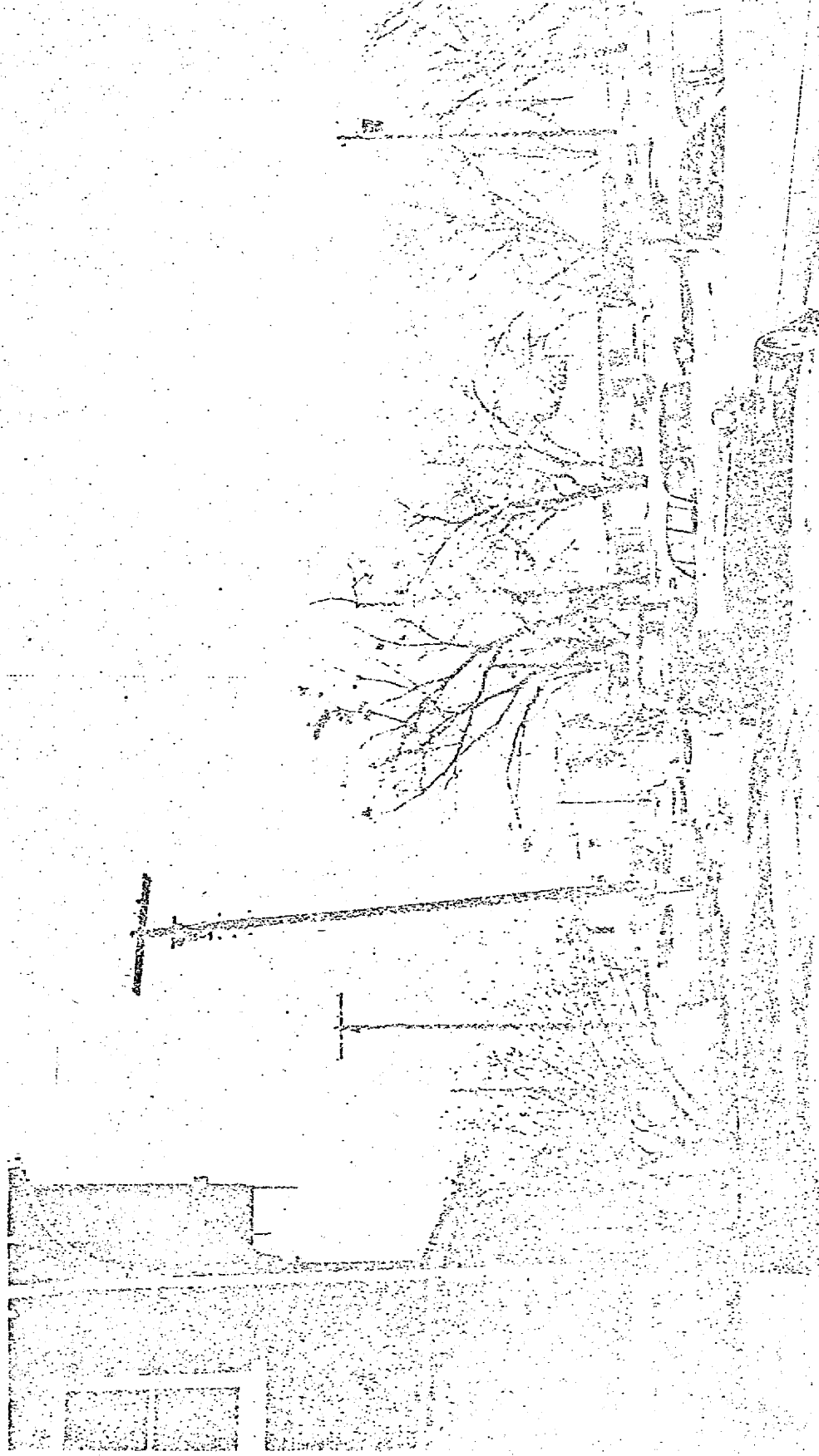
29. TED CALLAWAY (ARROW) IN SPOT FROM WHICH HE OBSERVED  
OSWALD.

30. CALLAWAY'S LOCATION AT TIME HE HEARD SHOTS.  
(501 EAST JEFFERSON BOULEVARD)



26. PORTION OF GETAWAY ROUTE ALONG PATTON AVENUE.

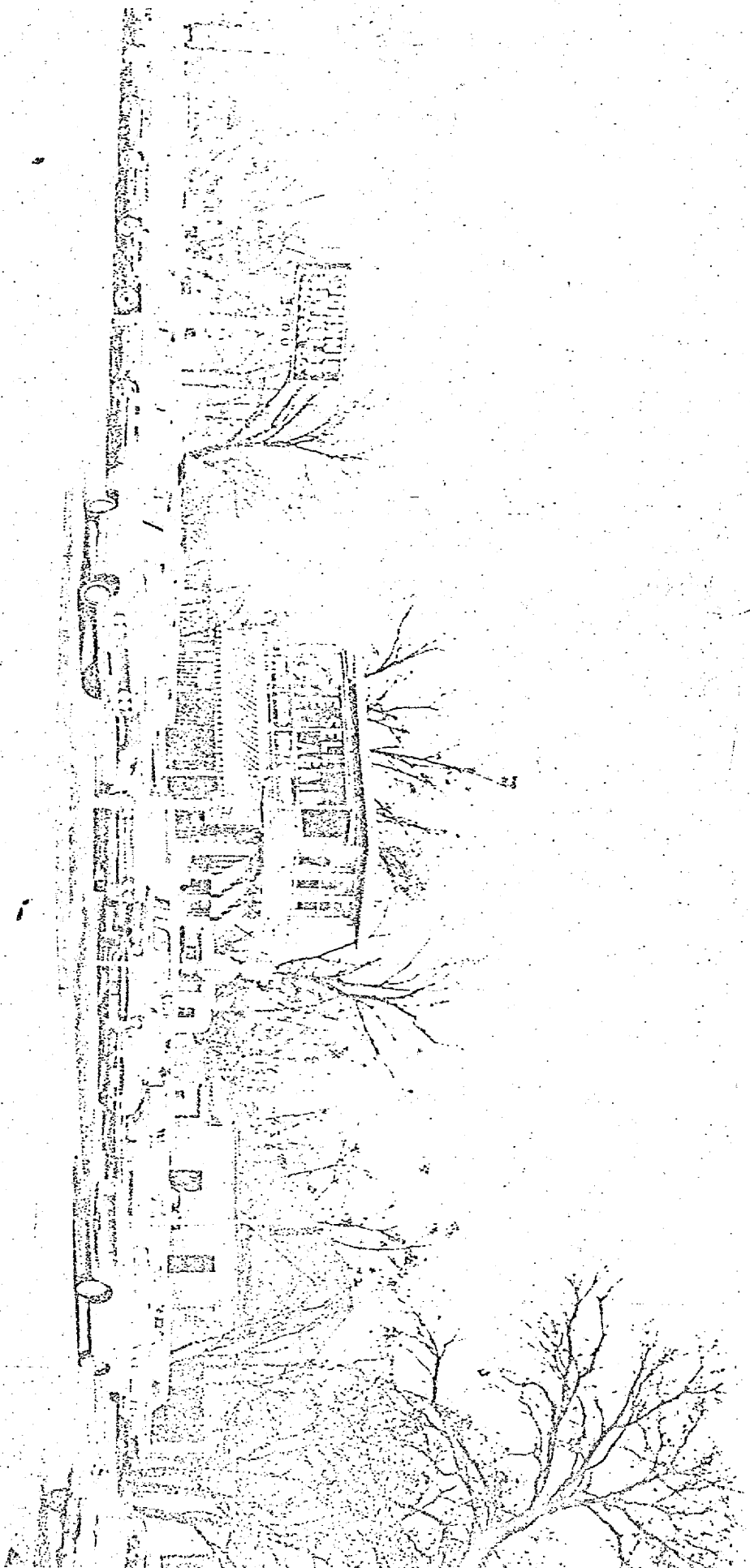




31. VIEW ALONG GETAWAY ROUTE TOWARD LOCATION OF SCOGGINS' CAB.

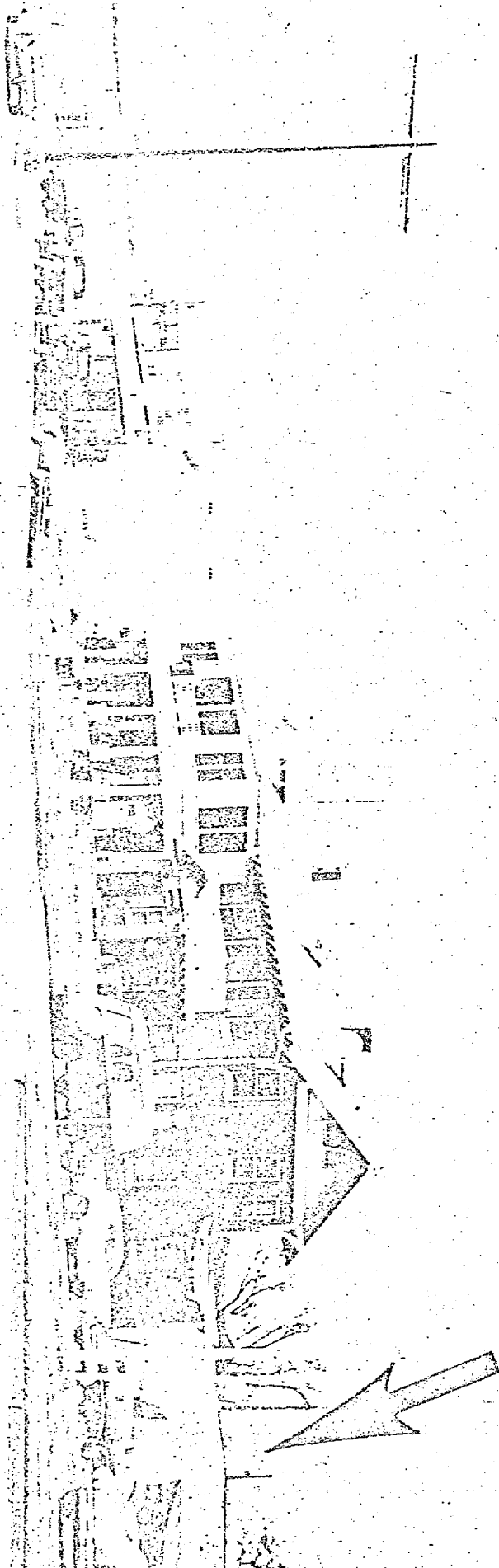


32. REYNOLDS USED CAR LOT, 500 EAST JEFFERSON BOULEVARD.



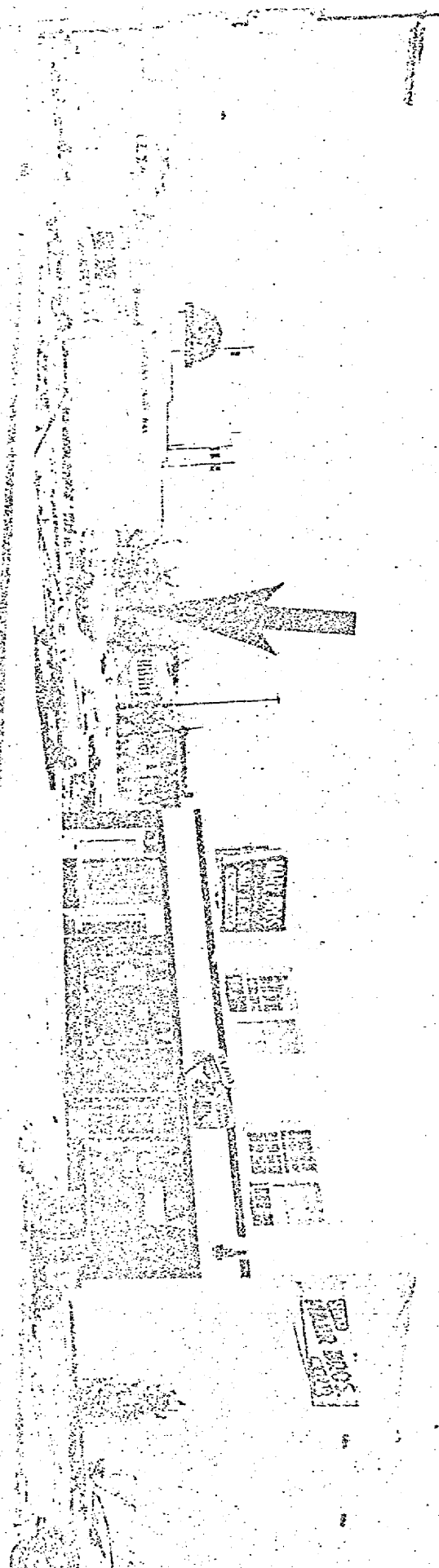
33. INTERSECTION OF JEFFERSON BOULEVARD AND PATTON AVENUE.



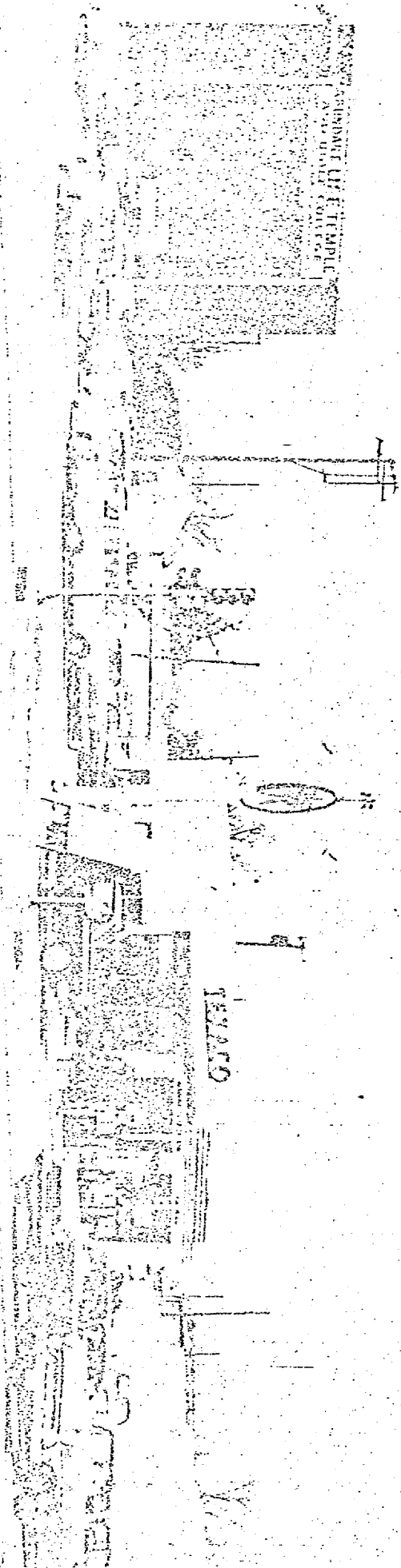


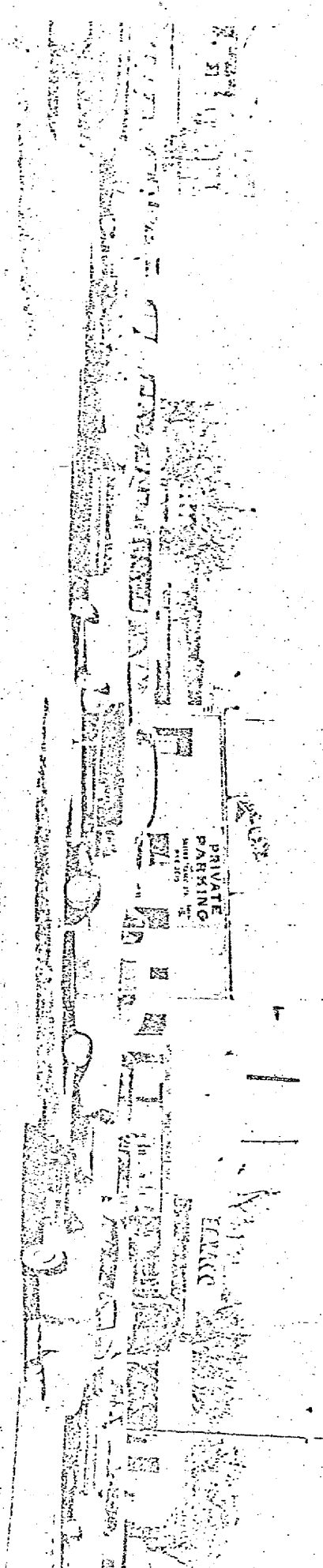
34. USED CAR LOT, 501 EAST JEFFERSON BOULEVARD (ARROW),  
AT INTERSECTION OF PATTON AVENUE.

35. PARKING AREA IN REAR OF TEXACO STATION, 400 BLOCK OF  
JEFFERSON BOULEVARD. (ARROW)



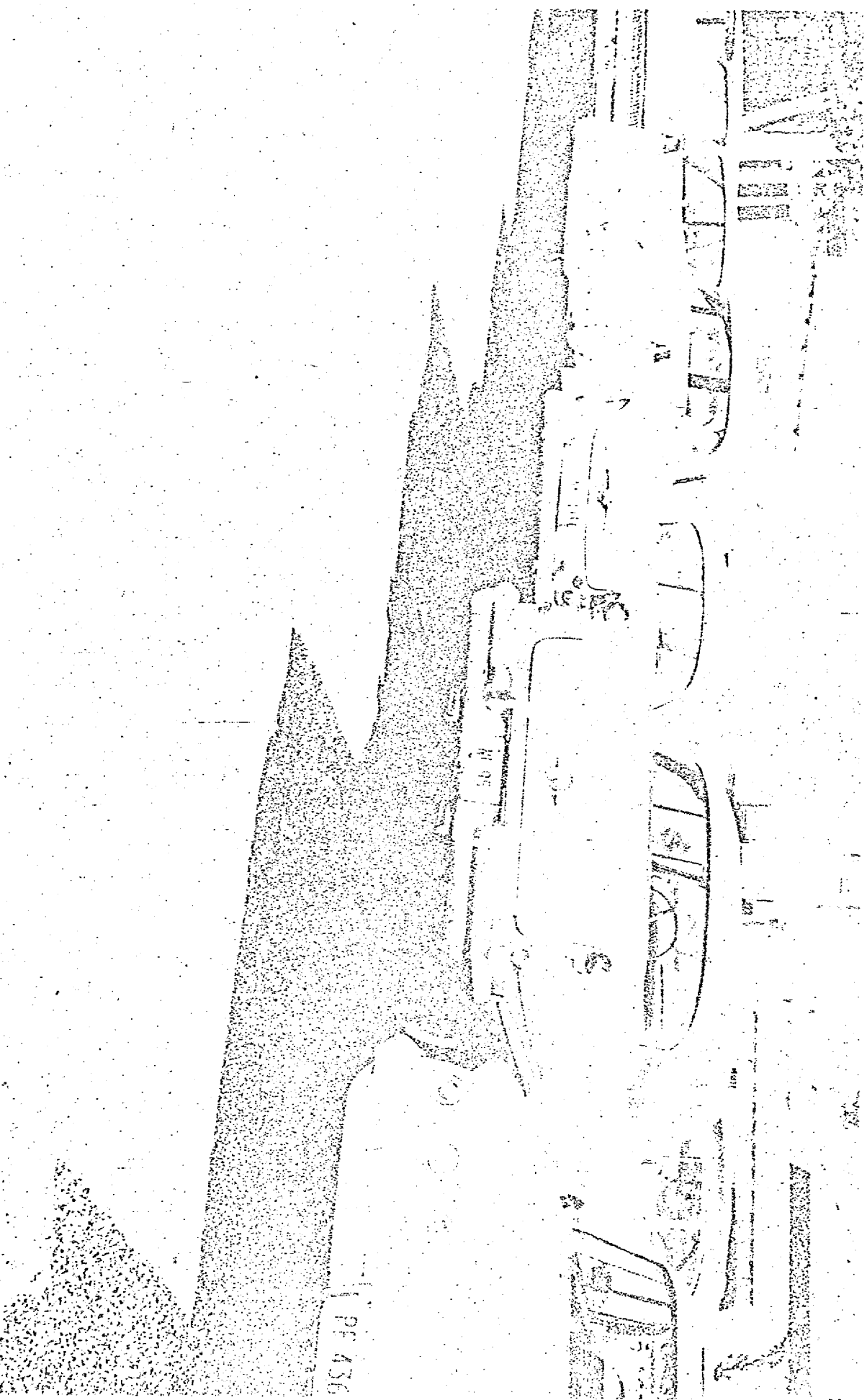
36.. PARKING AREA BEHIND TEXACO STATION, AS SEEN FROM  
INTERSECTION OF CRAWFORD STREET AND JEFFERSON  
BOULEVARD.





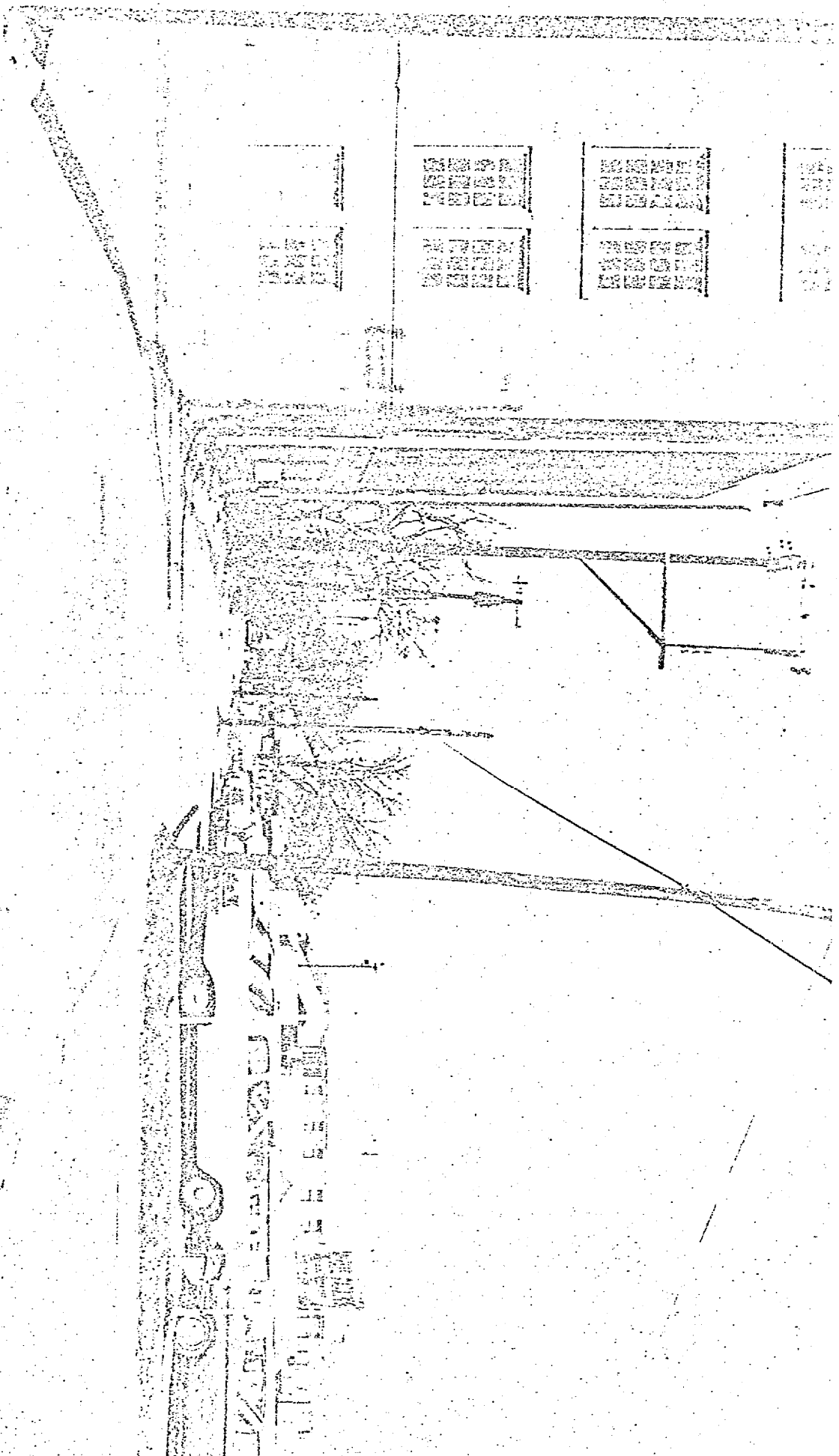
37. PARKING AREA BEHIND TEXACO STATION.

38. PLACE WHERE JACKET FOUND BEHIND OLDSMOBILE, LICENSE  
NL 95.

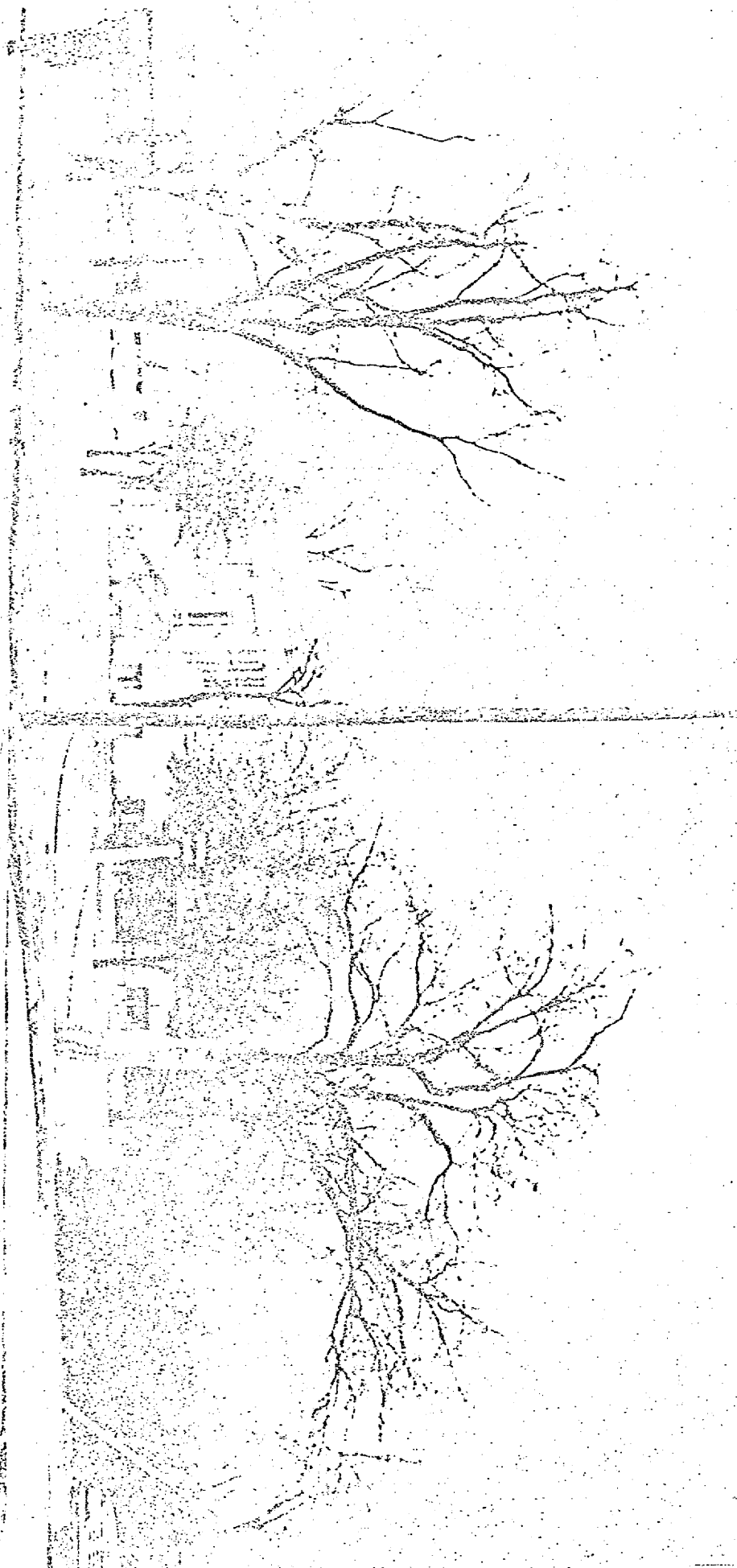


PF 436

39. VIEW OF ALLEY BEHIND TEXACO STATION PARKING LOT.







40. VIEW OF OAK CLIFF LIBRARY.