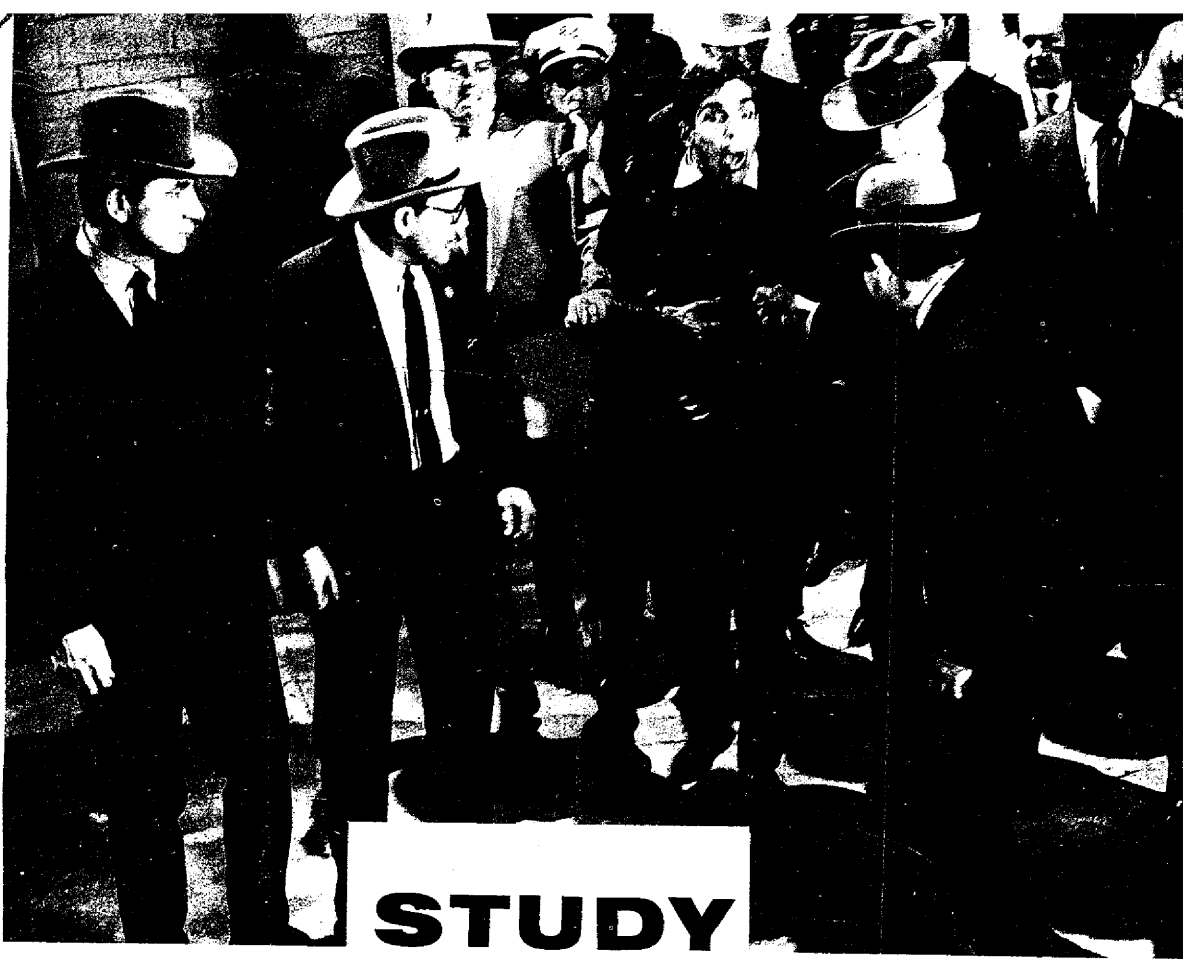


This article was clipped from

SHOE SERVICE - 79
222 West Adams Street · M
Chicago 6, Ill. Circ. 40,861

JUL '63



STUDY OF AN ASSASSIN

BBC-TV in London is presently mounting one of its biggest productions—a documentary play based on the life of Lee Harvey Oswald, the alleged assassin of President John Kennedy and Dallas patrolman Michael Tippets on Nov. 22, 1963.

The 90-minute play, entitled "Lee Os-

wald-Assassin," is directed by Rudolph Cartier, assisted by American writer and actor Reed de Rouen, who also plays the role of Jesse Curry, the Dallas chief of police. The most elaborate attention to strict historical accuracy in both dialogue and staging has resulted in a realistic re-

construction of the events in Dallas on that fateful November day.

The action of the play is based on the original script by Felix Lutzkendorf, a German playwright, but Director Cartier says "We needed the play of Lutzkendorf's, but we have come a long way since we started on this eight months ago. We have recon-

'Black Friday' is relived in a BBC Production based on the life and death of Lee Harvey Oswald, alleged assassin of Pres. John F. Kennedy

continued
71

Study of
An Assassin
continued



After shooting, Oswald, still handcuffed to FBI escort, staggers, mortally wounded, still only a few feet from Ruby, his murderer, who is now being dragged away by police.

Photos of actual shooting of Oswald were used to reconstruct crime



Tony Bill, who plays the part of Oswald, is being made up for his very dramatic part in the BBC Production based on Oswald's life and death.



Director Rudolph Cartier (r) and star, Tony Bill (c) carefully reconstruct scene when Oswald was shot.



structed the scene in the basement of Dallas Police HQ, by buying the original newsreel film, and going through the events, frame by frame.

"All the available pictures have been studied, and we have studied the Warren report very closely, to get what we hope is a clear picture of Lee Oswald's life right up to the moment in that police basement when Jack Ruby, a Dallas night club owner, stepped up close to Oswald and shot him at point-blank range—the outraged patriot as he was described."

The role of Oswald is played by Tony Bill, a young American actor specially brought from the U.S. for this part, and chosen for his close resemblance to Oswald. The role of Jack Ruby, played by John de Marco, was also researched very deeply, and the actual shooting in the police basement was rehearsed eight times before the final take was printed.

The play has not been produced without some antagonism from certain quarters. It seems that certain officials in the Dallas Police Department were "less than cooperative" in the reconstruction scenes. Some lines had to be cut because of libel risks, but both Cartier and star Tony Bill

are convinced that with the research effort undertaken, and the immense care taken to re-enact the scenes in exactly the way they happened, viewers will be able to relive the scenes that many of them saw on their TV sets at the moment it was happening.

Tony Bill, who plays Oswald, has read all the books published on the Kennedy assassination, as part of his preparation for the role.

"I really felt that as far as anyone could, I got "inside" this part and I've identified as much as possible with Oswald's character," says Bill, who has also read the 650-page Warren report on the assassination.

This production, dealing with one of the most tragic events of modern times, is a careful, sincere study of a complex young man obsessed with hatred of authority and what American democracy stands for. It attempts to show the train of events leading up to Oswald's pulling the trigger of his mail-order rifle from the window of the school-book warehouse, and his own subsequent death at the hands of Jack Ruby in the basement of the Dallas Police department, in front of the world's press.

End