

(Mount Clipping in Space Below)

Time Gives Back Identity

Oswald's Look-Alike Coworker Haunted for Years

By FLOYCE KORSAK
Staff Writer

The fallout from one of the most traumatic tragedies of the 20th century—the assassination of President John F. Kennedy eight years ago this week—spattered onto the innocent as well as the guilty.

One who innocently got caught up in the controversy was Billy Nolan Lovelady, a look-alike of Lee Harvey Oswald, the young man who the Warren Commission determined was the lone assassin. Both were employes of the Texas School Book Depository on Nov. 22, 1963.

Lovelady was standing in the doorway of the depository and witnessed the assassination.

HE WAS caught in the camera of James W. Altgens, an Associated Press photographer, as the shots were fired. The picture with a big question mark made headlines around the world—"Is this Lee Harvey Oswald? If so, then who killed Kennedy?"

The impact of mistaken identity was to follow Lovelady for four years. Letters and phone calls poured in for him at the book depository. Communications came from every state in the nation and from many foreign countries. People requested

autographs and information about the assassination. There were numerous crank messages and offers to buy the shirt Billy was wearing on the day of the assassination, one similar to the shirt Oswald was wearing. The Loveladys answered none of the communications.

Sensation-seeking writers and photographers literally followed Lovelady and his wife, Pat, around. Months later a station wagon with TV equipment occasionally would park in front of their apartment and their doorbell would ring. Others came on foot. Finally, Lovelady disconnected the doorbell.

Time has passed, the furor has died down, and the Loveladys can look back on the sad events with some objectivity. Until now Lovelady has been reluctant to discuss the assassination for fear of stirring up more confusion.

"I WAS able to answer questions to the satisfaction of officials immediately after it happened, but some people were looking for more. I wouldn't want to go through that again," he says.

For Lovelady, Nov. 22, 1963 began as a routine day of filling orders for books, and a noon-time break to watch the President's motorcade.

"Some of us were on the sixth floor and at first we were going to watch from the windows there. At the last minute we decided to go down to the front of the building. As the freight elevator passed the fifth floor we saw Oswald still at work. The elevator was slow, and we yelled at him through the iron gate and asked him if he wanted to watch the parade. He said he would be down later. That was about 12 o'clock, I guess.

"Just as the motorcade turned on Elm off Houston and traveled about 25 feet on Elm I heard the first shot and thought somebody was celebrating with a firecracker. Then I saw the President slump, and there were two more shots. For a second or two I couldn't think. I thought the shots came from my right, which would be near the railroad tracks, and everybody began running that way. All of a sudden I wondered what in the world we were doing running toward a gunman. We turned around and ran back and entered the depository through a rear door. There was confusion everywhere. It was only minutes before the police were all around and everyone was accounted for except Oswald.

"WE WERE taken to the police station for depositions and were still there when the police brought him in handcuffed. He

(Indicate page, name of newspaper, city and state.)

"The Dallas
A12 Times Herald"
Dallas, Texas

Date: 11/21/71

Edition:

Author:

Editor: Felix R. McKnight

Title:

Character:

or

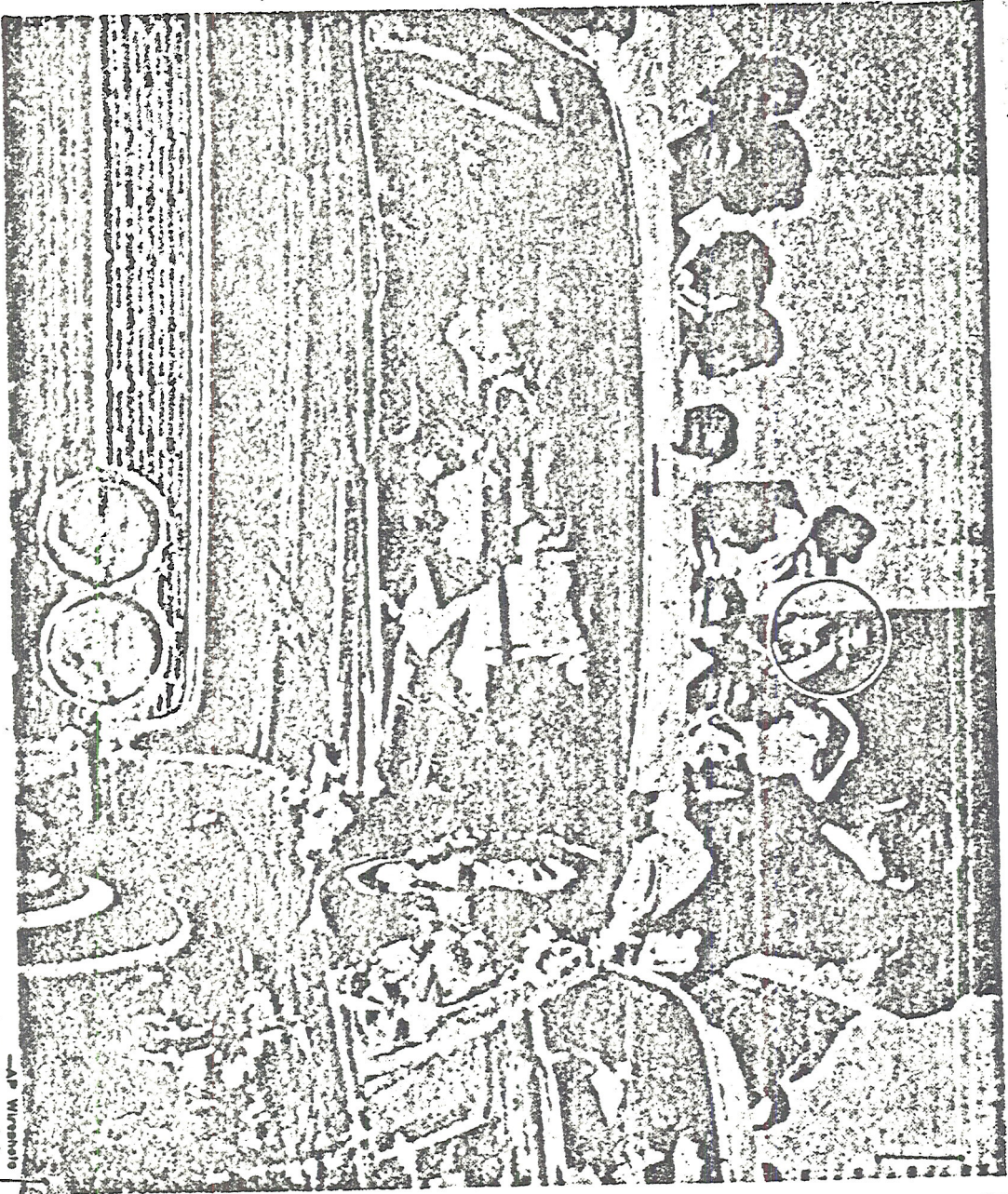
Classification:

Submitting Office: Dallas

Being Investigated

62-109562-7137

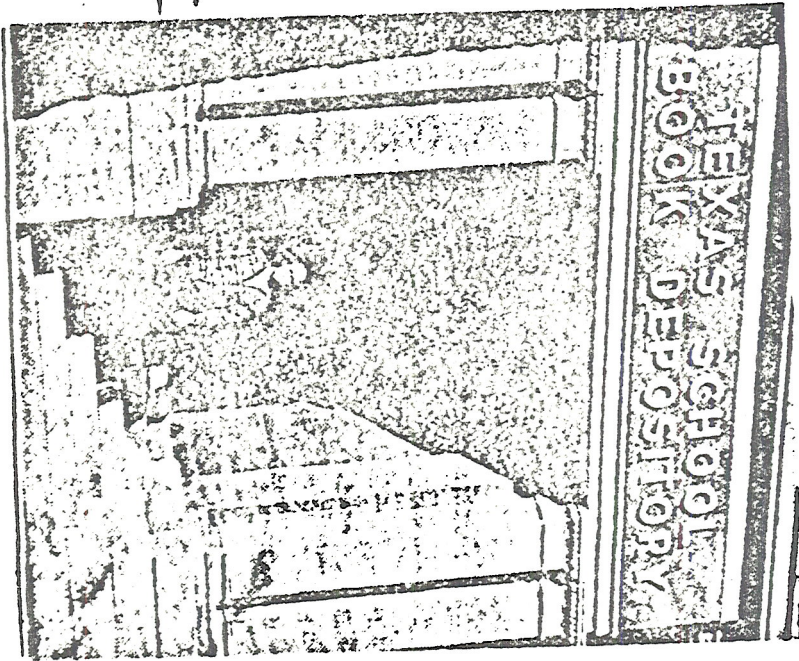
200 175



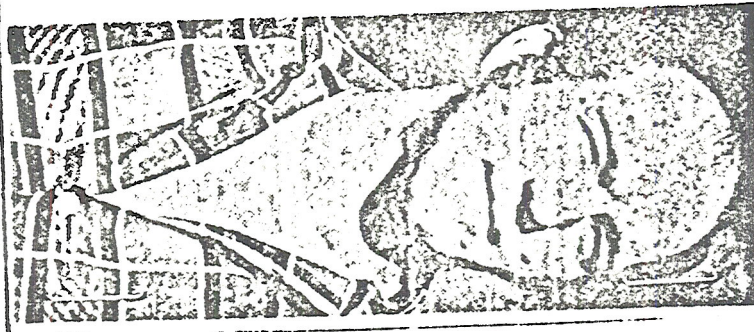
Bill Lovelady (circle) stands in the doorway of the Texas School Book Depository on that fateful day of Nov. 22, 1963. A look-alike of Lee Harvey Oswald, Lovelady also was an employe of the depository. In the car, President

Kennedy grasps his chest after being shot. Gov. John Connally has his back to the camera. This dramatic scene was captured by Associated Press photographer James W. Altgens.

—AP Wirephoto



—staff photo by Bob Jackson
 Billy Lovelady, mistaken in
 photograph as Lee Harvey
 Oswald in the aftermath of
 President Kennedy's assassi-
 nation, poses in the Texas
 School Book Depository
 doorway where he stood
 that fateful day eight years
 ago. Lovelady, now 25
 pounds heavier, is wearing
 the same shirt he wore the
 day the President was slain.



ENCLOSURE

62-1760-739