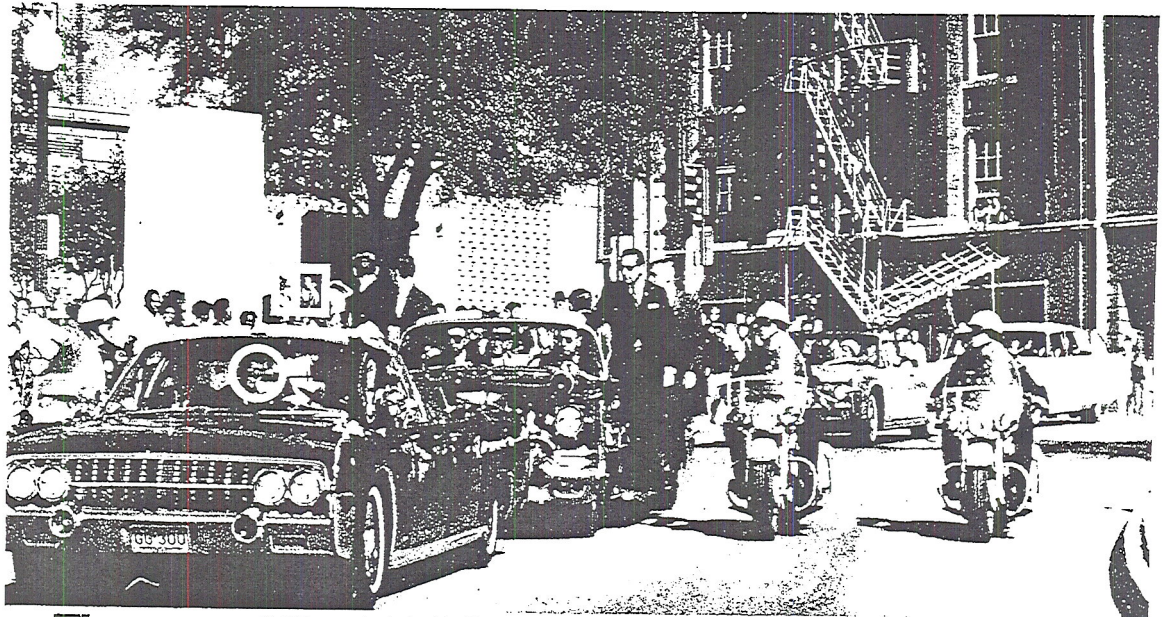


FIC
 Oswald in
 the doorway
 Focus on
 Oswald's
 shirt



The case of the striped shirt

James Altgen, an Associated Press photographer of 25 years experience, took this picture from position 4 in the reconstruction drawing on pages 8-9. Altgen was about 30 ft. from the President's car when he pressed the shutter, and as he did so he heard a shot. The picture seems to represent a moment slightly later than Zapruder frame 255. The President, although partially obscured by the driving-mirror, can be seen to be raising

hands to his throat. Behind the car can be seen the oak-tree which would have blocked a sixth-floor sniper's view till frame 207. The fact that Altgen's picture was never called before the Commission, despite his high potential as a witness, caused some comment in the American Press. Eventually, he was interviewed by Commission counsel, and said that just after the shooting he saw 'uniformed policemen' rushing up the grassy knoll, and followed them under the impression that they might have the assassin cornered. But the thing about Altgen's picture which caused most comment was its portrayal of the Book Depository

doorway. It showed a man (framed, and enlarged below) who looked to many people like Oswald—who was supposed to be six floors up firing a rifle. Referring to Altgen's picture, the Warren Report says that it showed 'several employees watching the parade from the steps of the Depository Building. One of these employees was alleged to resemble Lee Harvey Oswald. The Commission has determined that the employee was in fact Billy Nolan Lovelady, who identified himself in the picture.' But the allegations are still being put: backed by the kind of comparisons made in the pictures below

File part of
 Oswald/
 Lovelady



Above is Oswald, shortly after his arrest on the day of the assassination. He is wearing a dark, heavy-textured shirt, open to the waist over a white singlet. Far right is Billy Lovelady, photographed subsequently by the



F.B.I. in the clothes he said he wore on the same day. (The bold vertical stripes are red and white.) Clearly there is a physical resemblance between Oswald and Lovelady, and facially either of them might be the man in the



blowup (centre) of Altgen's picture. But could Lovelady's striped shirt have come out like that? Also, Lovelady's boss told the F.B.I. that Lovelady was sitting, not standing, on the Depository steps at the time of the shooting

