

Pipelines board in hallway

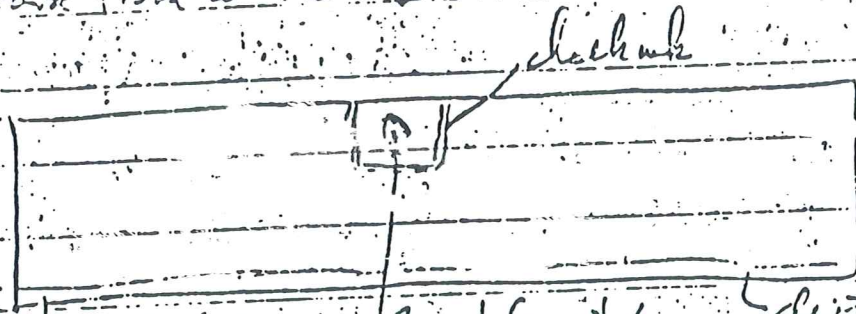
4/7/68
12:57 PM

Rec'd from Robert Fitzpatrick 4/6/68

T shirt

shorts

Board from window sill



No gun powder particles found

Front, slong

Poss. mk from side of gun muzzle

density, chipper white paint Prob.

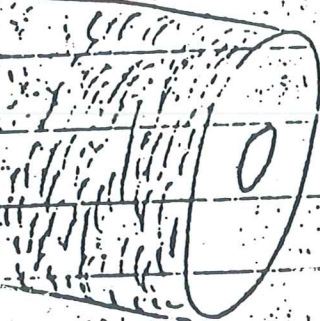
Drill bit

Too few mks. for ident

Memphis 10 AM 4/7/68

mk \approx type to machinery

mks on side of Q20 muzzle = same as other

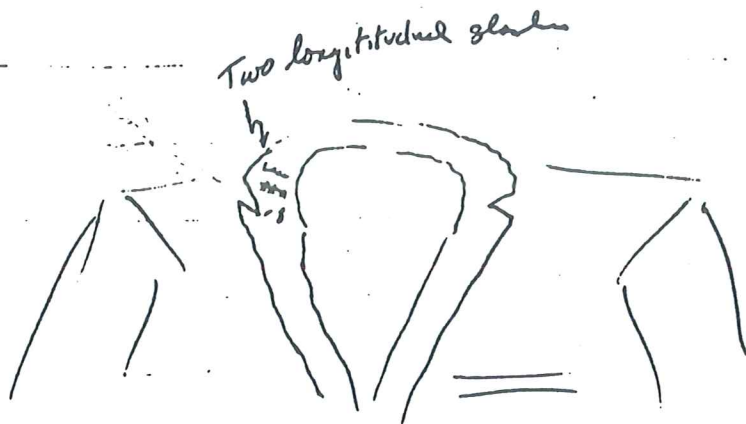


Mks. not found by ^{Q16} trench hammer mks by Memphis (PC 5498 P. 2) - Memo 4/11/68
Photo of mks on board 1st PM 4/7/68 / R. in atch

Board to Geo. Baubrick by 4/2/68

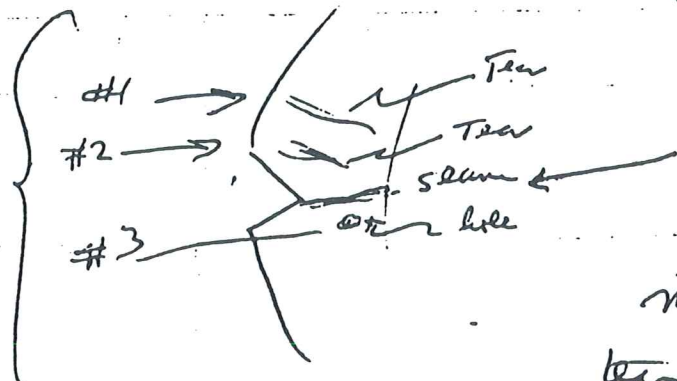
Collins's Desk

The edges of the hole torn in the Q76 shirt collar, the edges of the three tears on the collar of the Q78 suit jacket and the material near the torn ends of the K27 necktie were contaminated with traces of lead which could have come from a bullet or ^{from bullet fragments,} the lead contaminating these items could not be associated with a particular bullet or lead source.



Black suit coat had two longit. tears on collar (right side) just above the V cut on collar one round shaped hole or tear just below seam

Spectro
Samples
Location
Designation

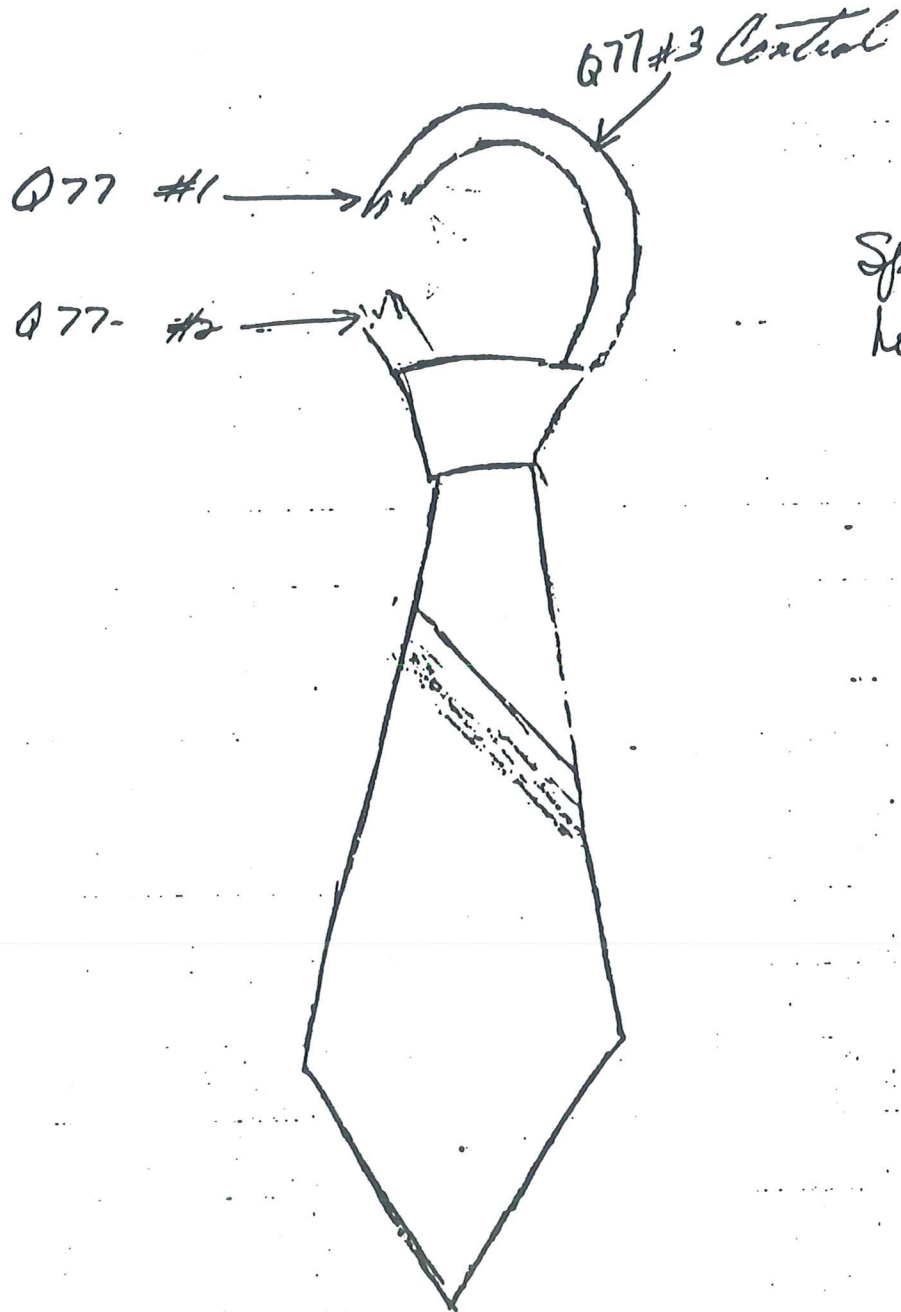


none of those holes or tears went through the backing material or the collar of the coat.

PC-15530

d

NECK TIE - Q 77



Spectro Samples
Location Diagram

PC-A 5530

L

WHITE SHIRT - Q 76

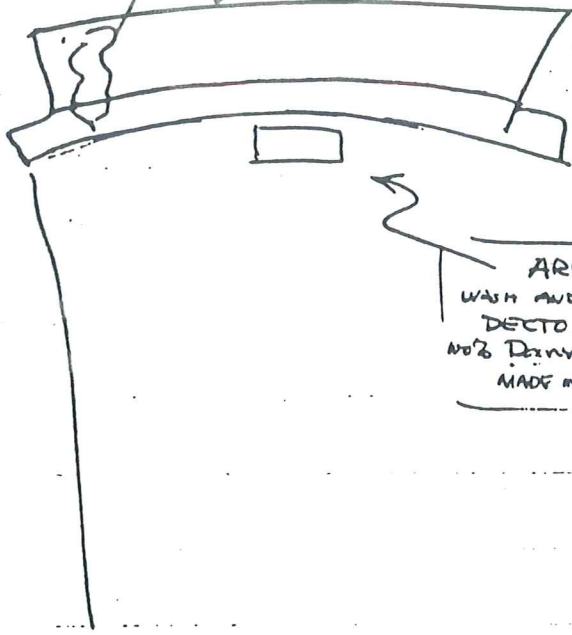
SHIRT COLLAR →



Spectro Samples
Location Diagram

3 is control from back of shirt in bloody area.

hole torn in collar
of shirt



ARROW
WASH AND WEAR
DECTOLENE
NO'S DRYN Polyester
MADE IN USA

PC-A 5530

L

WHITE SHIRT - Q 76

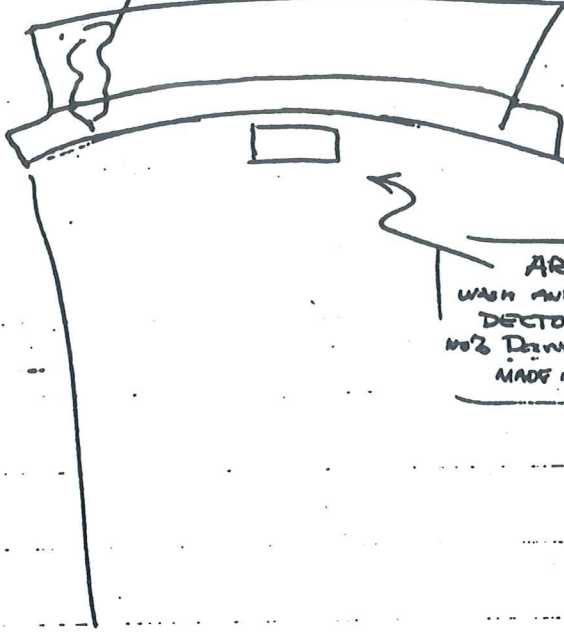
SHIRT COLLAR →



Spectro Samples
Location Diagram

3 is control from back of shirt in bloody area.

live torn in collar
of shirt



ARROW
WASH AND WEAR
DECTOLENE.
NO'S DIRM Polyester
MADE IN USA

972 - 243 Winchester caliber Remington bolt-action
rifle, Model 700, Serial Num 283747
from Avonmarine Supply Co.

Reid in LFF by Roubroke 4/5/68

Exam of " " Frayir 4/5/68

- Colored swab thru barrel - No powder - ^{bolt} ~~new piece~~
- Bolt face has crust. material on bolt around rif.
which would prevent firing gun without
removal or flattening - crystalline, like resin

Therefore: Weapon not fired (prob. since left factory)

Sodium Carbonate Hydroxide by X-Ray Diff. - anal Spect. 4/10/68 J.B.G.
(Bellevue)

A. Neil P. Shanahan 4/5/68 8 PM

72 Rifle box - Recpt for 243 Win rfe + part book letter r/o in register
9 boxes of ammo. (handl)

73 Red field scope mount and rings SA 700 " signed Harry Lowmeyer

74 2 mirrors - one white ^{one} + one yellow ^{one} dated 3/29/68 #2251A

Major case prints of Donald F Wood

Gun store clerks
Avonmarine Supply Co.
5701 Airport Highway
Rt 11-66

U. L. Matthew Baker

000485

Q72. 243 Winchester caliber Remington bolt-action rifle, Model 700, Serial Number 283747 from Avonmarine Supply Co

acid in LFS by Roubroche 4/15/68

X Exam of " " Frasier 4/15/68

X - Follow swab thru barrel - No powder - ^{light} new grease
- Ball face has crusted material on bolt around ej. which would prevent firing gun without removal or flattening - cr. to line, like resin

Therefore: Weapon not fired (prob. since left factory)

Sodium Carbonate Hydroxide by X-Ray Diff. - anal Spect. 4/16/68 J.P.L. (Sallyhair)

~~12~~ ~~4/5/68 8 PM~~

12 Rifle box - box for 243 win rifle + post bank letter via in register

9 boxes of ammo. (boxed)

13 Red field scope mount and rings SN 700 " signed Jimmy Sawyer

14 2 Winch - on white orig on yellow label 3/29/68 #22511

Major co. prints of Donald F Wood

Car. in check
Avonmarine Supply Co.
5701 Airport Highway
B 11 68

U. L. Matthews Baker