

91

# JFK - Photo of

L.A. H. EX - 11/14/66

# Second Assassin?

## Nint of Second Kennedy Assassin In Photo Scouted

L.A. H. EX - 11-14-66

NEW YORK, Nov. 14 (UPI)—Esquire magazine has issued a release about an article in its December issue stating that "a newly discovered photograph" obtained from United Press International appears to confirm the existence of a second assassin in the slaying of President Kennedy.

The article is based in part on conclusions drawn by the author from a blowup of the picture which was taken from one frame of a film of the assassination. The article states erroneously that three UPI editors are proponents of a theory that the picture indicated a second slayer.

### IN WARREN REPORT

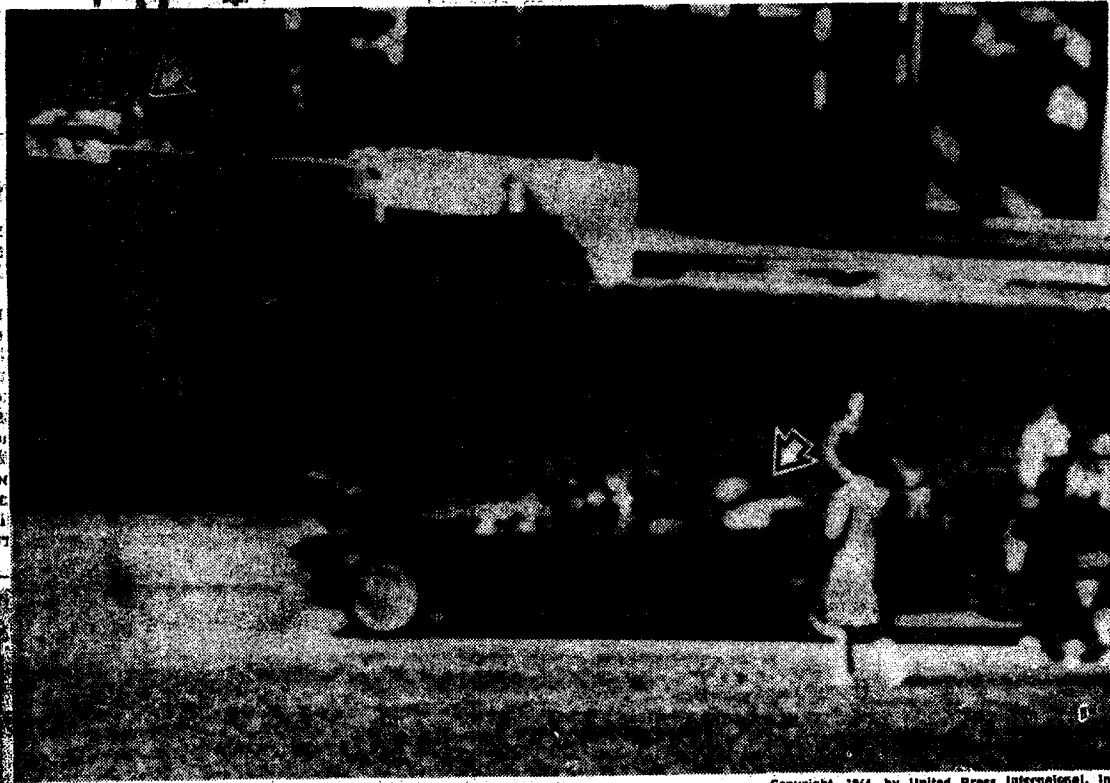
Various frames of the film taken by Orville Nix of Dallas are contained in the Warren Report. A 1200-word dispatch, written by UPI staff correspondent Jack V. Fox, was carried last June 27 by the UPI. It discussed the picture in question in detail.

In his dispatch, Fox said that after talking to witnesses, studying the Warren Report and various challenges, he personally was satisfied with the Warren Report findings.

### FILM ENLARGED

He said that one frame of

the Nix film, enlarged many times, shows what could be made out as the rear of a light-colored station wagon wedged between a colonnade and a fence. Fox wrote: "If the picture is studied long enough, one can believe that he sees a man in sunglasses, leaning on top of the station wagon and pointing a rifle down toward Elm Street. But one can also imagine a white-faced steer staring down from above the colonnade."

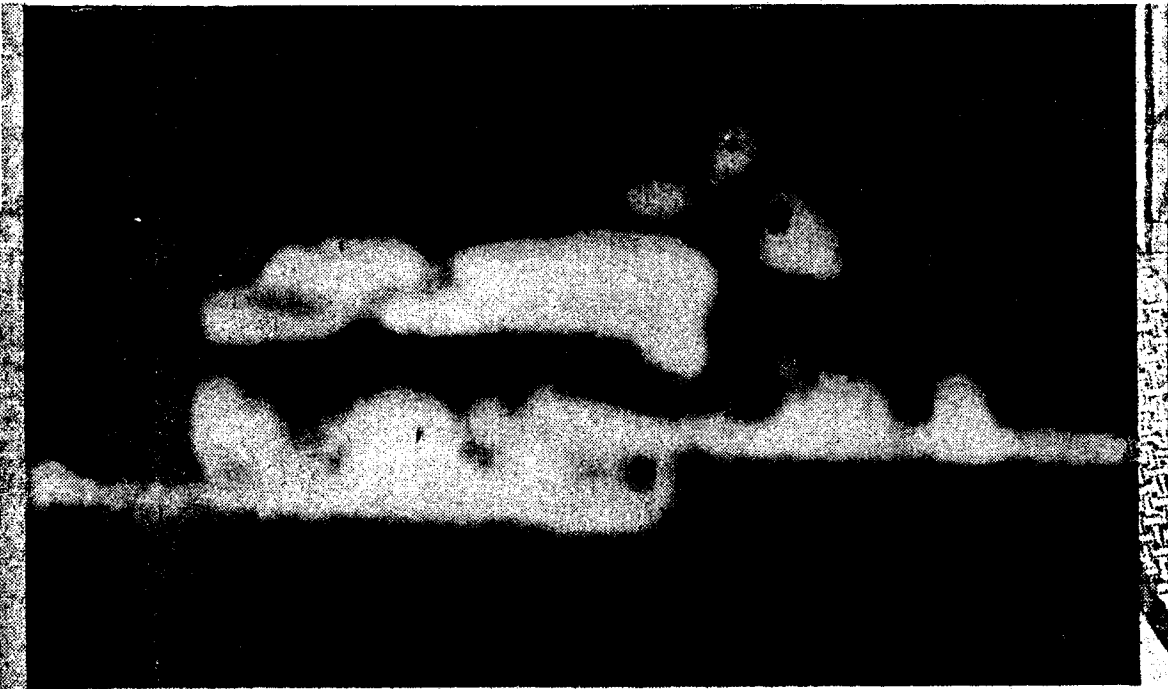


—Copyright, 1964, by United Press International, Inc.

### NEWLY-FOUND PHOTO! A SECOND ASSASSIN?

This photo is a single frame from an 8mm movie film made during the assassination of President Kennedy on Nov. 22, 1963, in Dallas. It was printed in December issue of Esquire magazine, which shows (arrow upper left) "a man aim-

ing what appeared to be a rifle at President's car." The President's car is seen traveling from right to left. Mrs. Kennedy (arrow at right) is shown in back seat of car, with her arm around wounded Chief Executive. (Story on Page A-11.)



—Copyright, 1964, by United Press-International, Inc.

This photo is an enlargement of the upper left inset section of other photo. If it shows a man aiming a rifle at the President it would support

theory that more than one was involved in the assassination. The Warren Commission held Lee alone.