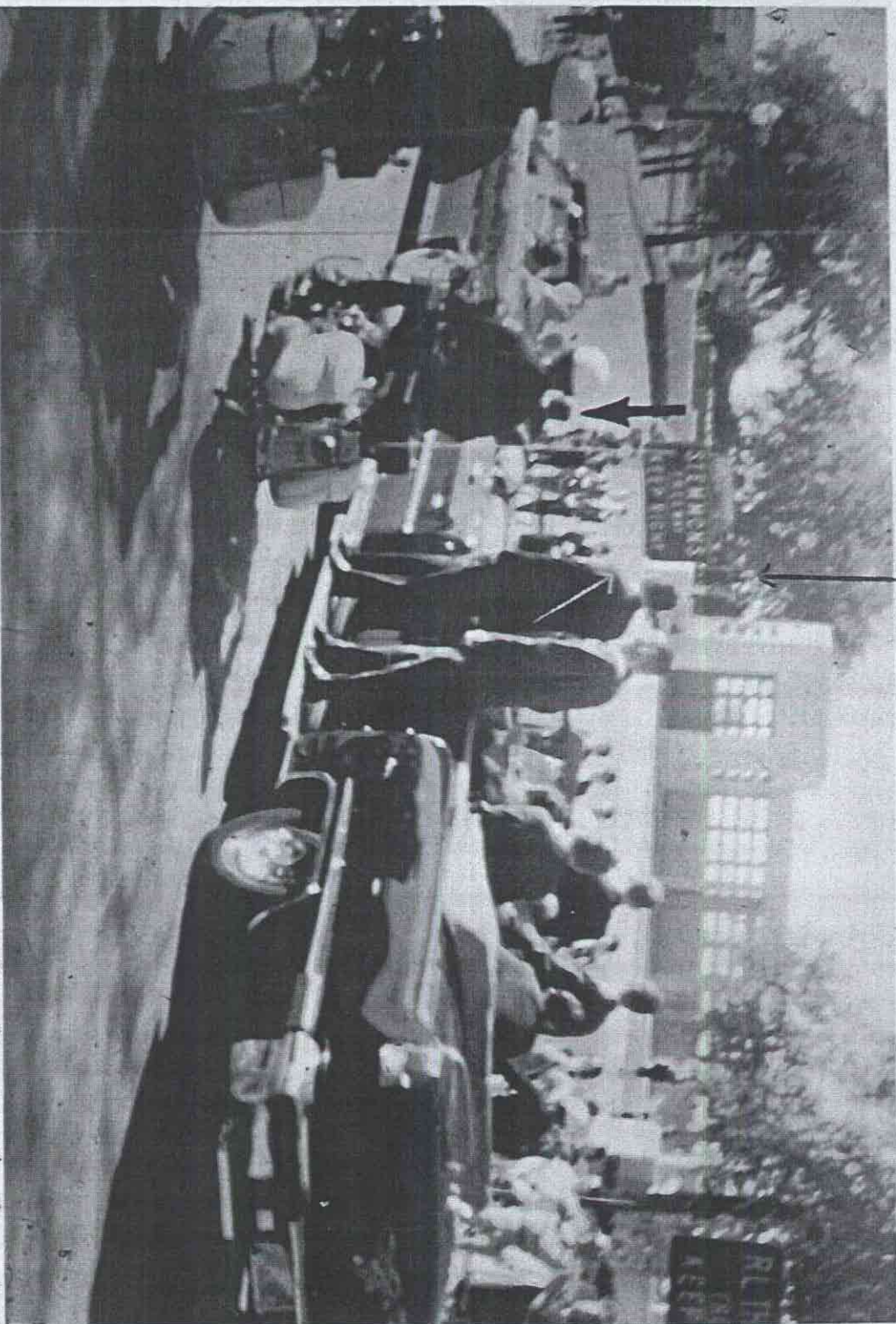


ZAPRUDE

WHITE ARROW POINTS POINT OF EVINZ WILLIS
LEFT SHOULDER WHICH IS ON DIRECT LINE OF
SIGHT BETWEEN ZAPRUDE AND WILLIS.



COPYRIGHT 1964 PAUL WILLIS
COMMISSION EXHIBITS
WILLIS # 5 } THORNTON
HUDSON # 1 } SIGN TRIMMED
SHANEYFELT # 25 } OFF ON ALL

FROM WILLIS' POSITION THE PRESIDENT'S HEAD APPEARS
AT A SPOT SLIGHTLY LESS THAN TWO-THIRDS OF THE
DISTANCE FROM THE CENTER OF THE LAMPPOST TO THE
SOUTHEAST CORNER OF ZAPRUDE'S PERCH.