

(5b) (50)

FIG. ② to FIG. ① VARIATIONS	C		X		OO	
	#	%	#	%	#	%
less than 20%	26	100	26	100	26	100
15% or less	22	84.6	25	96.2	25	96.2
10% or less	21	80.8	24	92.3	25	96.2
7.5% or less	19	73.1	19	73.1	23	88.5
5% or less	17	65.4	16	61.5	18	69.2
2.5% or less	13	50.0	10	38.5	13	50.0

Fig. ② greater or less than Fig. ①
(5b)

NO. OF POINTS VARY- ING	C			X			OO		
	+	-	±	+	-	±	+	-	±
15% to 20%	# 3	1	4	0	1	1	0	1	1
	% 11.5	3.8	15.4	0	3.8	3.8	0	3.8	3.8
10% to 15%	# 1	0	1	1	0	1	0	0	0
	% 3.8	0	3.8	3.8	0	3.8	0	0	0
7.5% to 10%	# 2	0	2	0	5	5	0	2	2
	% 7.7	0	7.7	0	19.2	19.2	0	7.7	7.7
5% to 7.5%	# 1	1	2	0	3	3	1	4	5
	% 3.8	3.8	7.7	0	11.5	11.5	3.8	15.4	19.2
2.5% to 5%	# 3	1	4	0	6	6	3	2	5
	% 11.5	3.8	15.4	0	23.1	23.1	11.5	7.7	19.2
less than 2.5%	# 7	6	13	6	4	10	4	9	13
	% 26.9	23.1	50.0	23.1	15.4	38.5	15.4	34.6	50.0

90-92

FIG. ① (5a) OSWALD	FIG. ② (5b) "LOVE-LADY"	FIG. ② GREATER OR LESS THAN FIG. ① (5P) AMT X (mm) %								(5R) 00 FIG. ① FIG. ② GREATER OR LESS THAN ① (5-D) AMT %									
		C		X		C		X		①	②	AMT		%					
		+	-	+	-	+	-	+	-			+	-	+	-				
A	C-7 X-127	C-7 X-117	0			-10			0			-7.9	127	116		-11			-8.7
B	C-20 X-71	C-20 X-60	0			-11			0			-15.5	73	62		-11			-15.1
C	C-95 X-0	C-94 X-0	+3			0			+32			0	94	97		+3			+3.2
D	C-73 X-52	C-79 X-52	+6			0			+82			0	89	93		+4			+4.5
E	C-112 X-57	C-117 X-52	-5			-5			-4.1			-8.8	133	127		-6			-4.5
F	C-107 X-69	C-108 X-70	-1			+1			-0.9			+1.4	127	127		0			0
G	C-147 X-136	C-152 X-123	+5						-13			+3.4	198	194		-4			-2.0
H	C-158 X-162	C-155 X-146	-3			-3			-16			-7.9	224	211		-13			-5.8
I	C-78 X-115	C-77 X-112	-1			-1			-3			-1.3	137	134		-3			-2.2
J	C-114 X-113	C-116 X-110	+2						-3			+1.8	159	158		-1			-0.6
K	C-138 X-111	C-136 X-109	-2			-2			-2			-7.4	176	173		-3			-1.7
L	C-143 X-198	C-140 X-187	-3			-3			-11			-2.1	242	231		-12			-5.0
M	C-91 X-189	C-93 X-189	+2						0			+3.2	208	209		+1			+0.5
N	C-44 X-197	C-51 X-196	+7						-3			+15.9	203	202		-2			-1.0
O	C-36 X-193	C-42 X-192	+6						-3			+16.7	196	195		-1			-0.5
P	C-24 X-155	C-28 X-151	+4						-4			+16.7	156	153		-3			-1.9
Q	C-52 X-113	C-53 X-110	+1						-3			+1.9	124	121		-3			-2.4
R	C-55 X-179	C-40 X-179	+5						0			+1.3	180	182		+2			+1.1
S	C-102 X-116	C-103 X-113	+1						-3			+1.0	153	152		-1			-0.7
T	C-122 X-209	C-120 X-203	-22			-22			-6			-18.0	239	224		-15			-6.3
U	C-37 X-110	C-40 X-102	+3						-8			+8.1	115	109		-6			-5.2
V	C-21 X-109	C-22 X-102	+1						-7			+4.8	111	104		-7			-6.3
W	C-81 X-77	C-86 X-76	+5						-1			+6.2	111	114		+3			+2.7
X	C-0 X-115	C-0 X-104	0						-11			0	114	103		-11			-9.6
Y	C-104 X-47	C-103 X-48	-1						+1			-1.0	113	113		0			0
Z	C-65 X-20	C-69 X-23	-4			-4			+3			-6.1	67	71		+4			+6.0

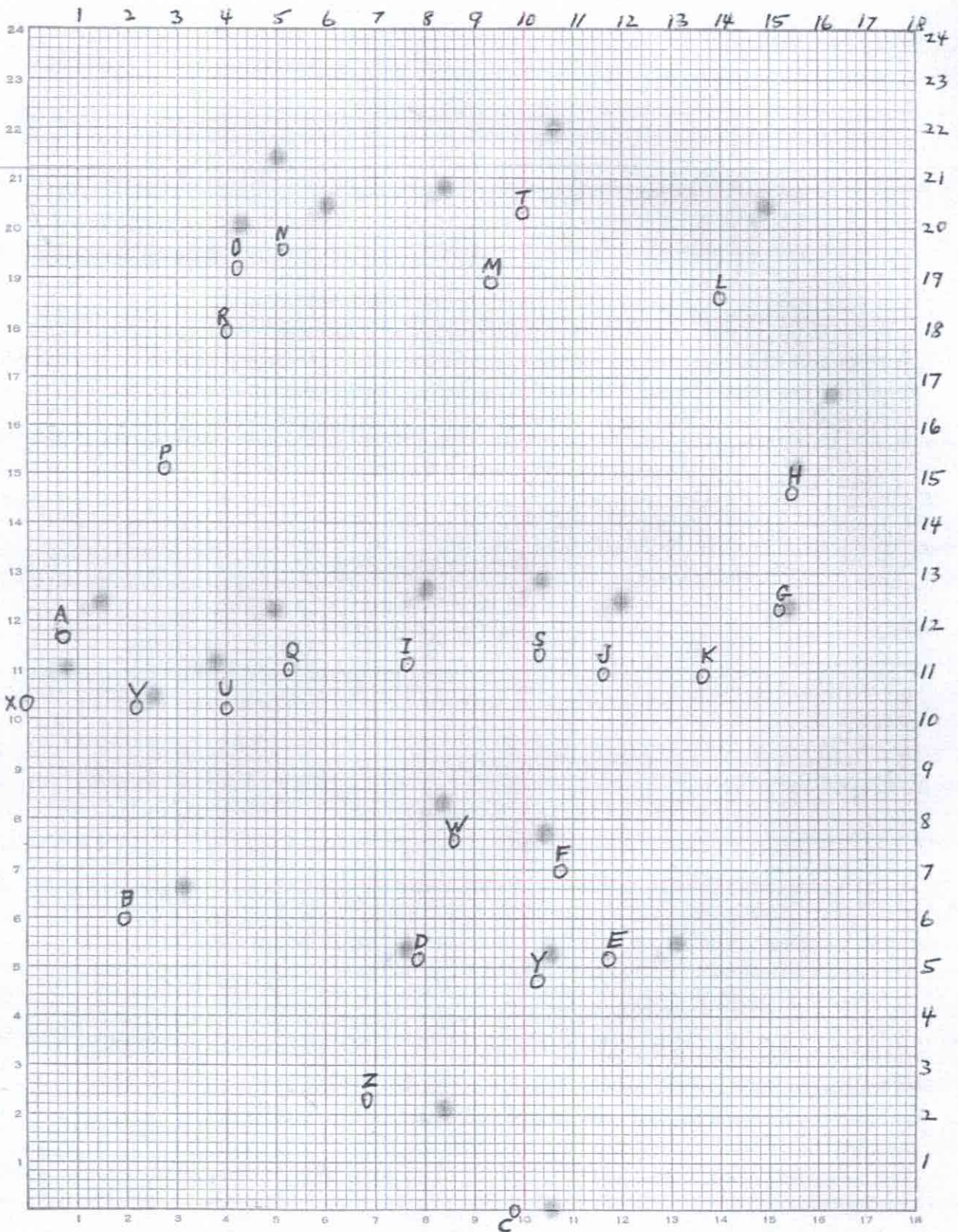


FIG. 6^A - "LOVELADY"

(COPY)

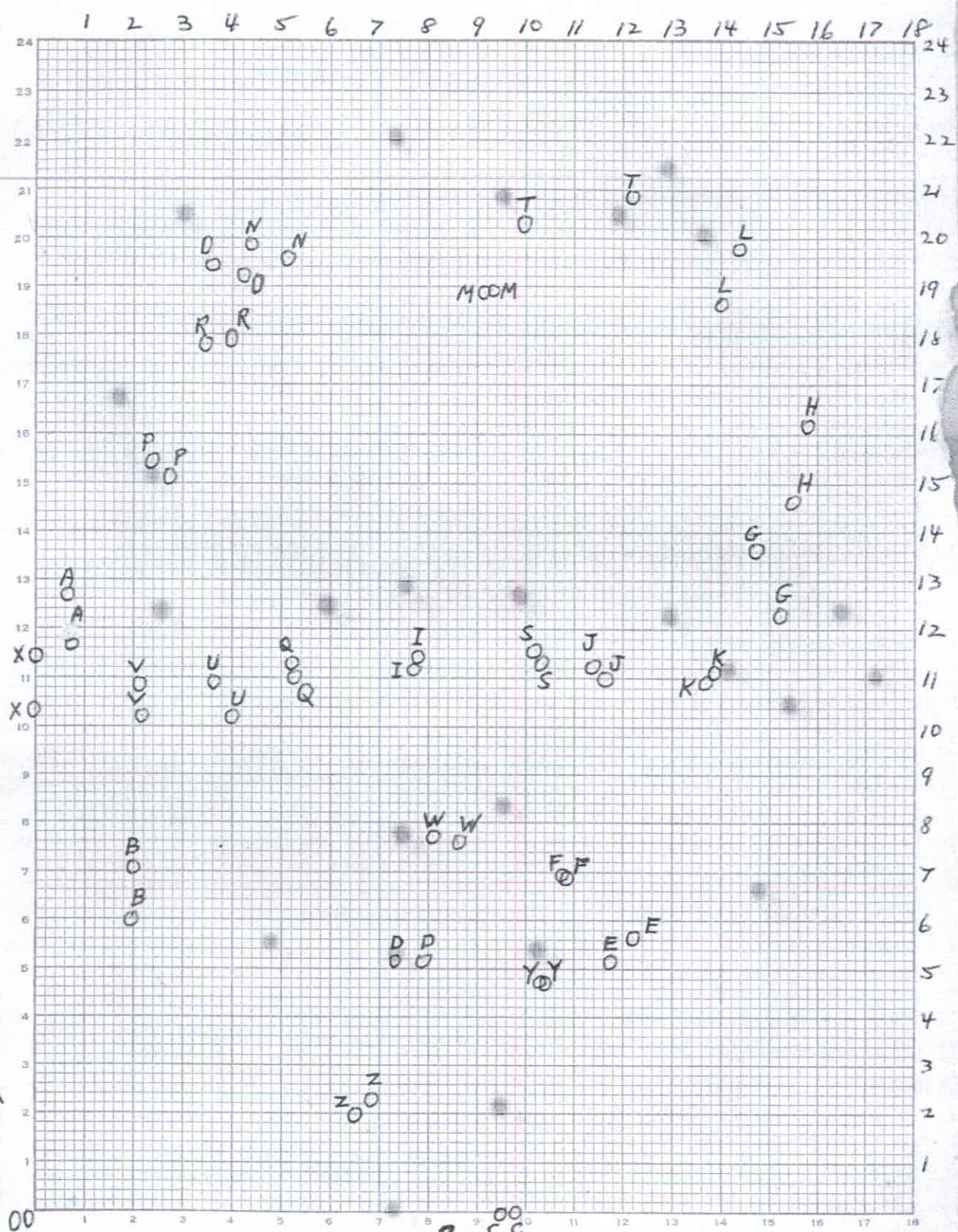


FIG. 6B OSWALD "LOVELADY"

(COPY)

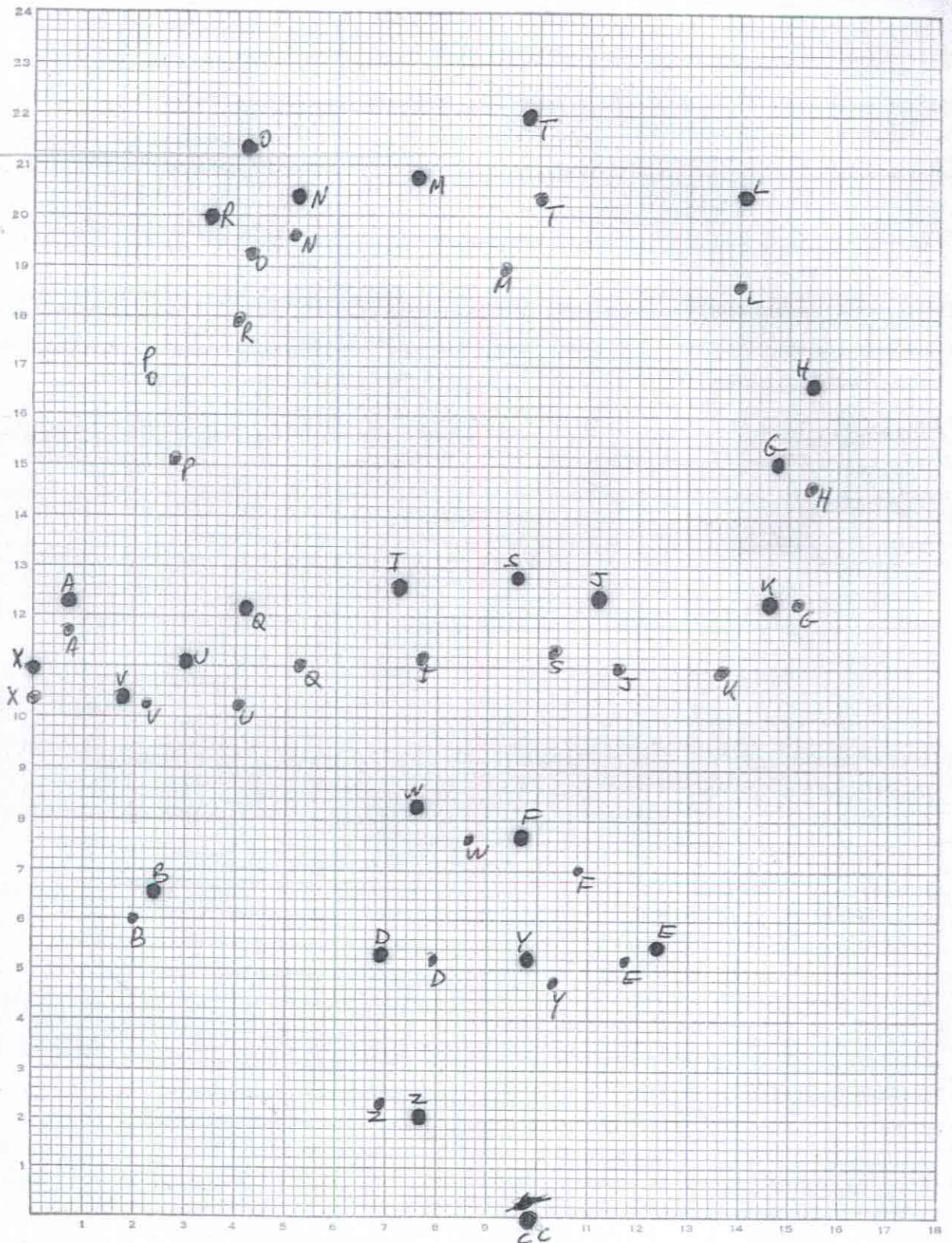
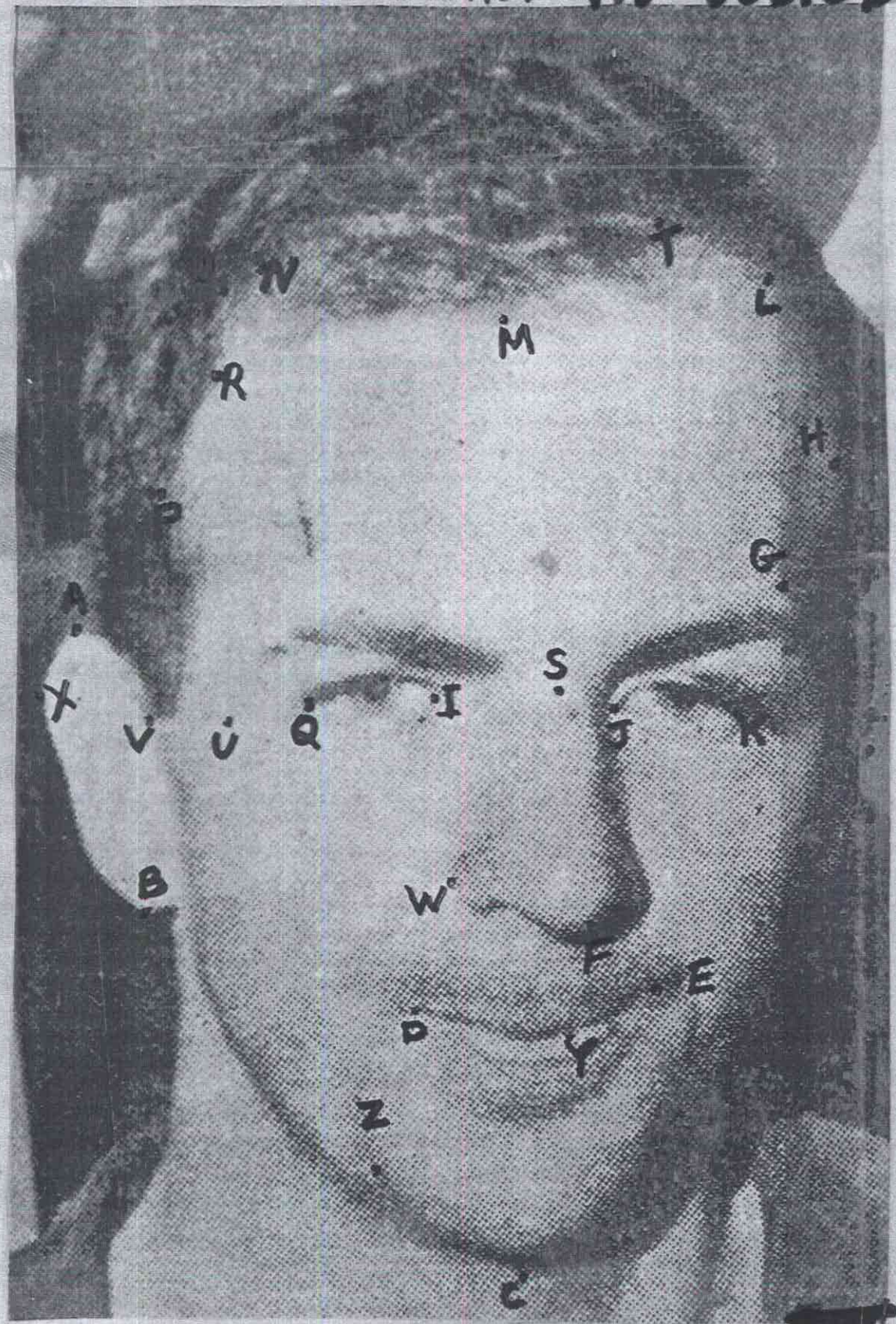


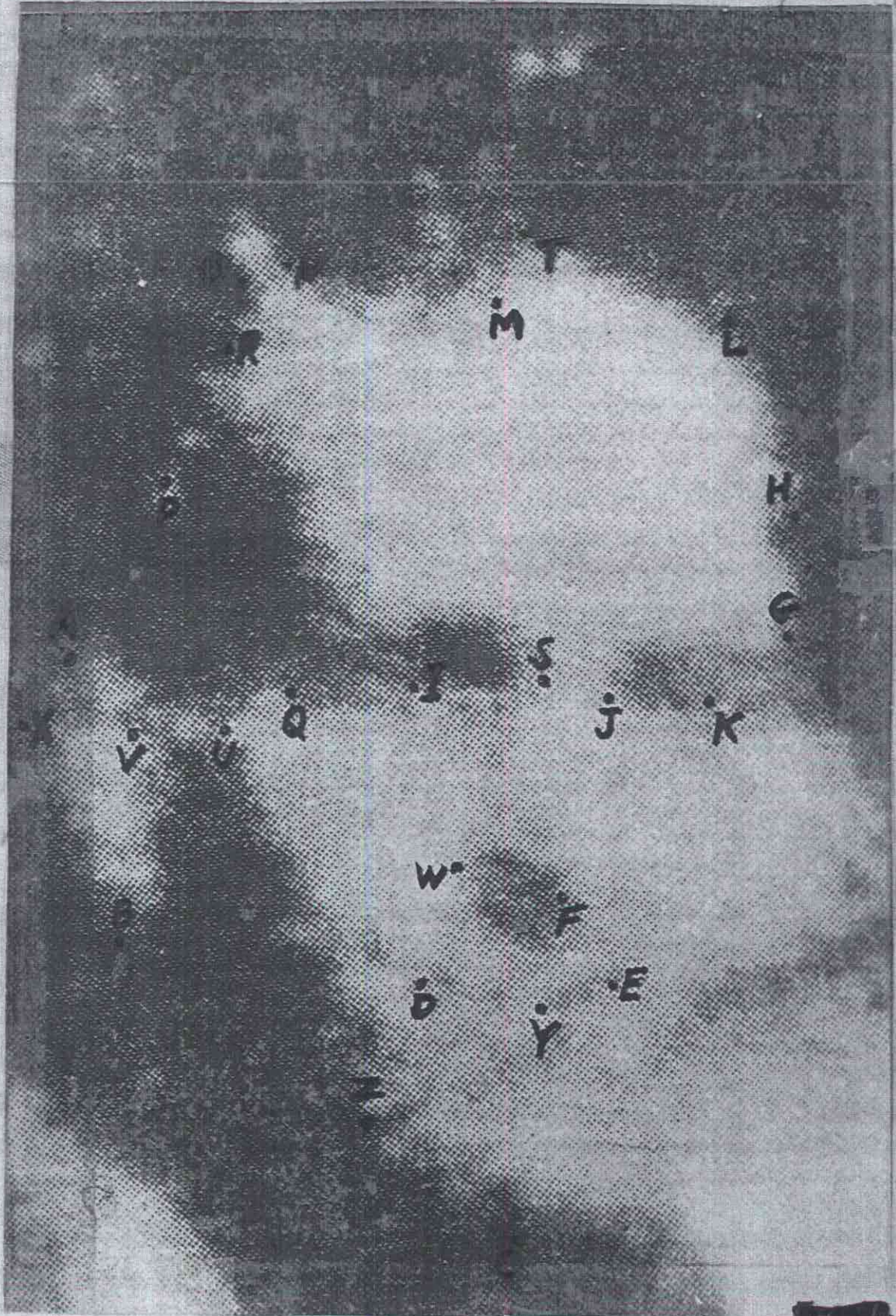
Fig. 5c. "Love/dy
Love/dy"

5A

OSWALD - IN CUSTODY



"LOVELADY" from Athens Sept 1





S-C

S-C

R W M

A

X

V

B

D

Z

C

S

J

K

W

F

E

LOVELADY - FROM P.
LOVELADY

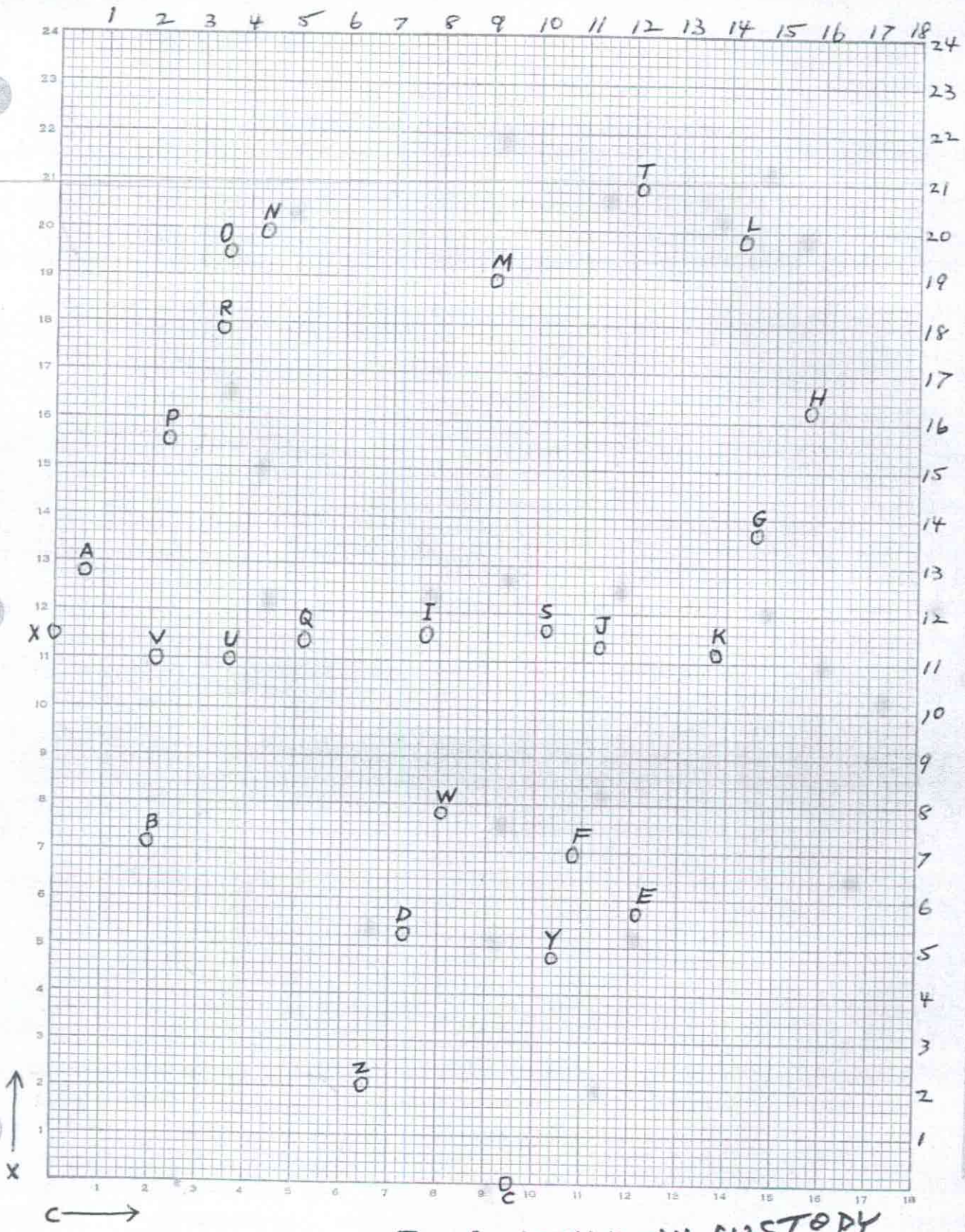


FIG. 6 - OSWALD - IN CUSTODY
(COPY)