

Proof of Splice involved in
deletion of frames 208-211

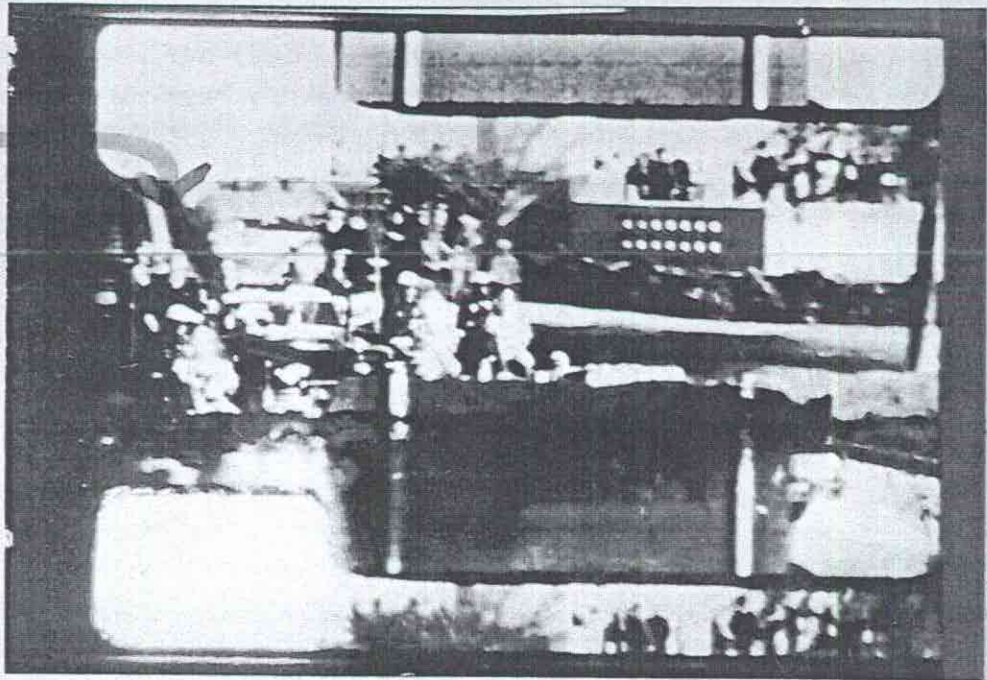
1. each picture of CE 885 has three frames represented; the primary frame in the center; the bottom portion of the preceding frame at the top; and the top portion of the following frame at the bottom. For example, picture labeled Frame 205 actually shows bottom of 204 (portion of sign) at top; 205 in center; and top of 206 (bushes, people) at bottom.

Similarly, Frame 206 shows bottom of 205 at top; 206 in center; and top of 207 at bottom.

2. In frame 212 we actually see normal part of 207 at top; then part of normal 208 immediately below it, and extending down to dark horizontal line just above middle. This dark line indicates horizontal cut in 208, and also indicates lower extremity of overlap of spliced area. (note offset in tree-trunk at right -- above and below dark horizontal line. Area below line is frame 212, down to bottom of sign; then fr. 213 below sign).
3. Note horizontal line below middle of frame 207. This represents upper extremity of underlap for splice. Cloudy area below it caused by cement used in splice.

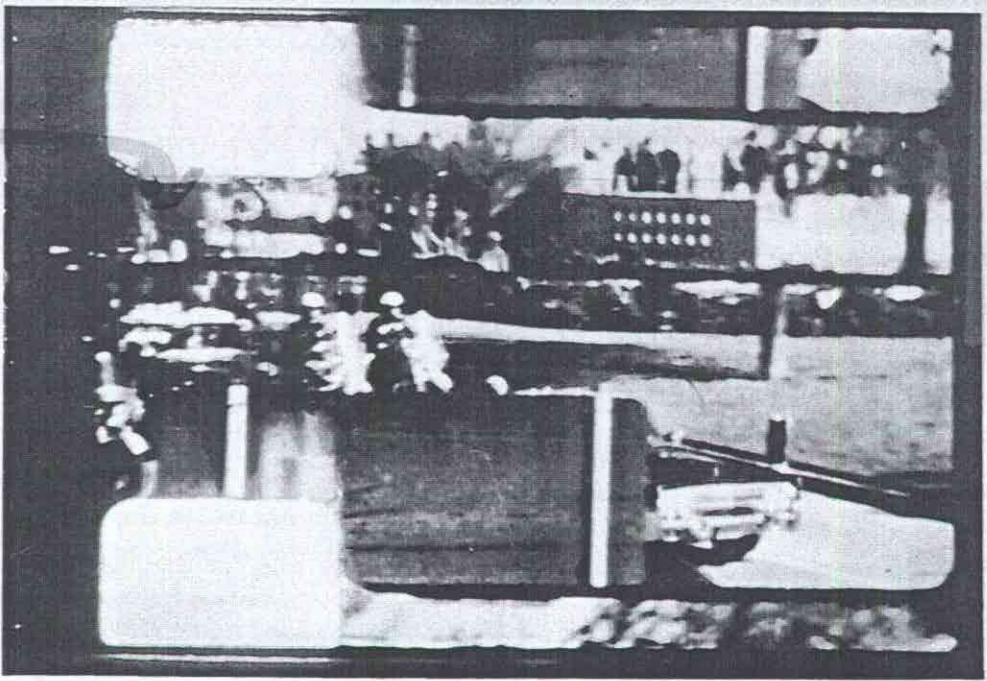
(from HYP.C)

Verifying 207/208



ZAPRUDER FILM—FRAME 207

Section of 207 over 208 for specific (note cement clouds)



ZAPRUDER FILM—FRAME 212

COMMISSION EXHIBIT 885—Continued

Sec. of 208/207 over 210 to here

← 208 → 207

← 212 →