

UNITED STATES GOVERNMENT

Memorandum

TO : Mr. Callahan *MC*

DATE: 5/20/71

FROM : J. P. Dunphy *JD*

SUBJECT: JAMES EARL RAY, AKA;
DR. MARTIN LUTHER KING, JR., VICTIM;
CR - CONSPIRACY
UFAC - ROBBERY

Tolson	_____
Sullivan	_____
Mohr	_____
Bishop	_____
Brennan, C.D.	_____
Callahan	_____
Conroy	_____
Cooper	_____
Dalbey	_____
Felt	_____
Gale	_____
Rosen	_____
Tavel	_____
Walters	_____
Soyars	_____
Tele. Room	_____
Holmes	_____
Gandy	_____

All work requested of Exhibits Section completed.

The following should be placed behind Bureau file:

1. Six original artist's conception drawings
2. Photo copies of each drawing.
3. Five trial aids and copy of each.

Visual Information Specialists Eugene Paul Arey, Horace J. Heafner and George C. Mumford prepared drawings and trial aids.

"ENCLOSURE"

Enclosures

44-38861

KO

(2)

19
ENCLOSURE

EX-114
REC-11

MAY 24 1971

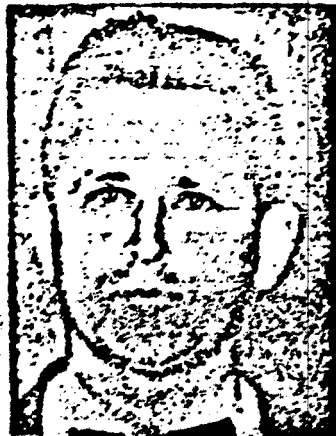
*Bulky
Enclosure
PHB 2/1/76*

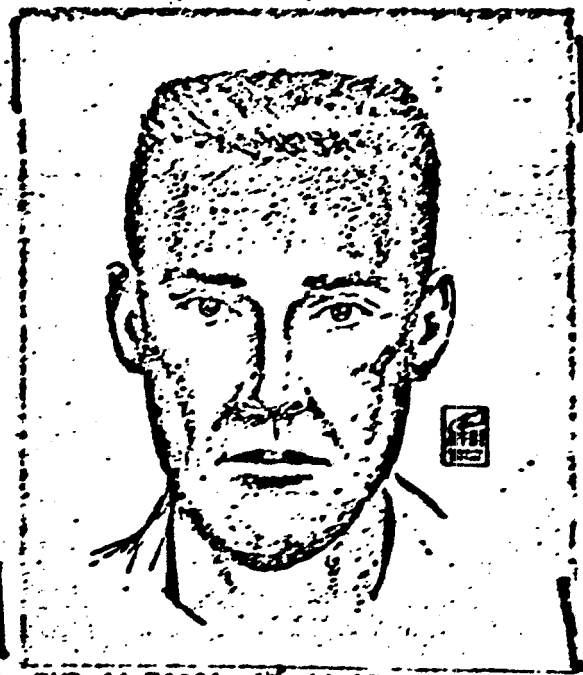
SLA 3/1/71

70 MAY 25 1971



COMPLETE SET OF
14 ITEMS RE MEMO
DUNN TO CALLAHAN 4-22-68





BUR 44-38861 LA 44-1574 6-17-68



BUR 44-38861 LA 44-1574 5-4-68

Robert Avey

w.o. 168

Comp 6/4/68

rec 6/17/68

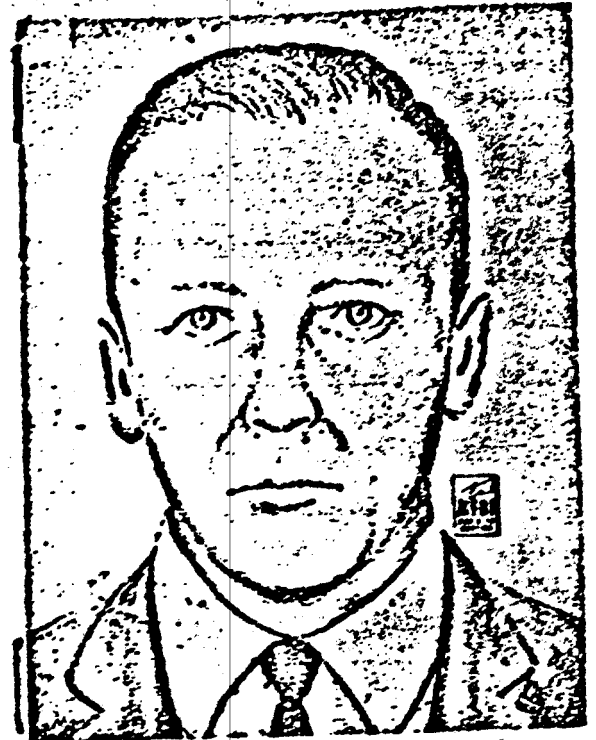
Murder 44-38861

LA 44-1574

44-38861-5912



MUMFORD #1, MEMPHIS



?

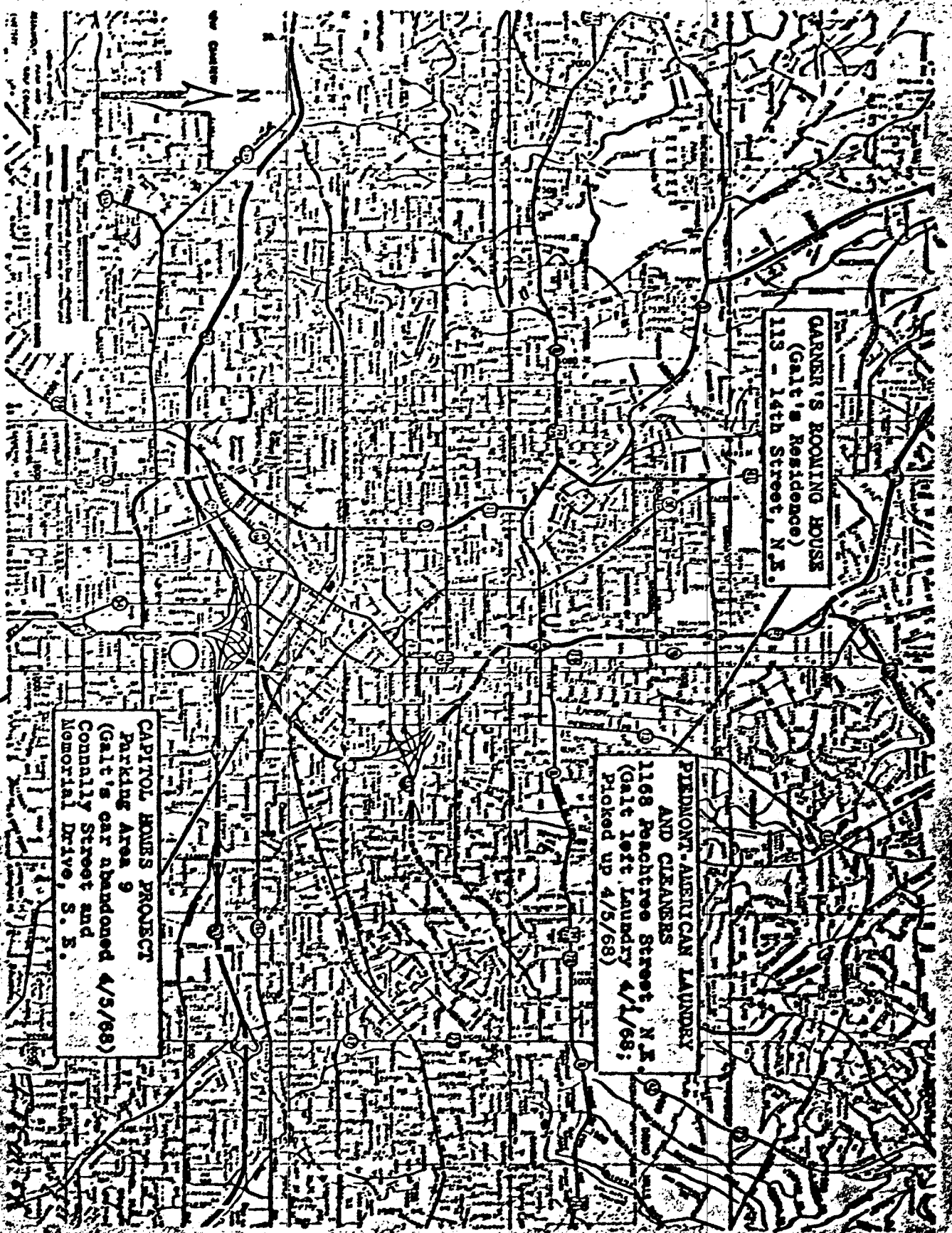


HEAFNER #2 BH

W.O.
1453
Sent
4/15-17,
1969



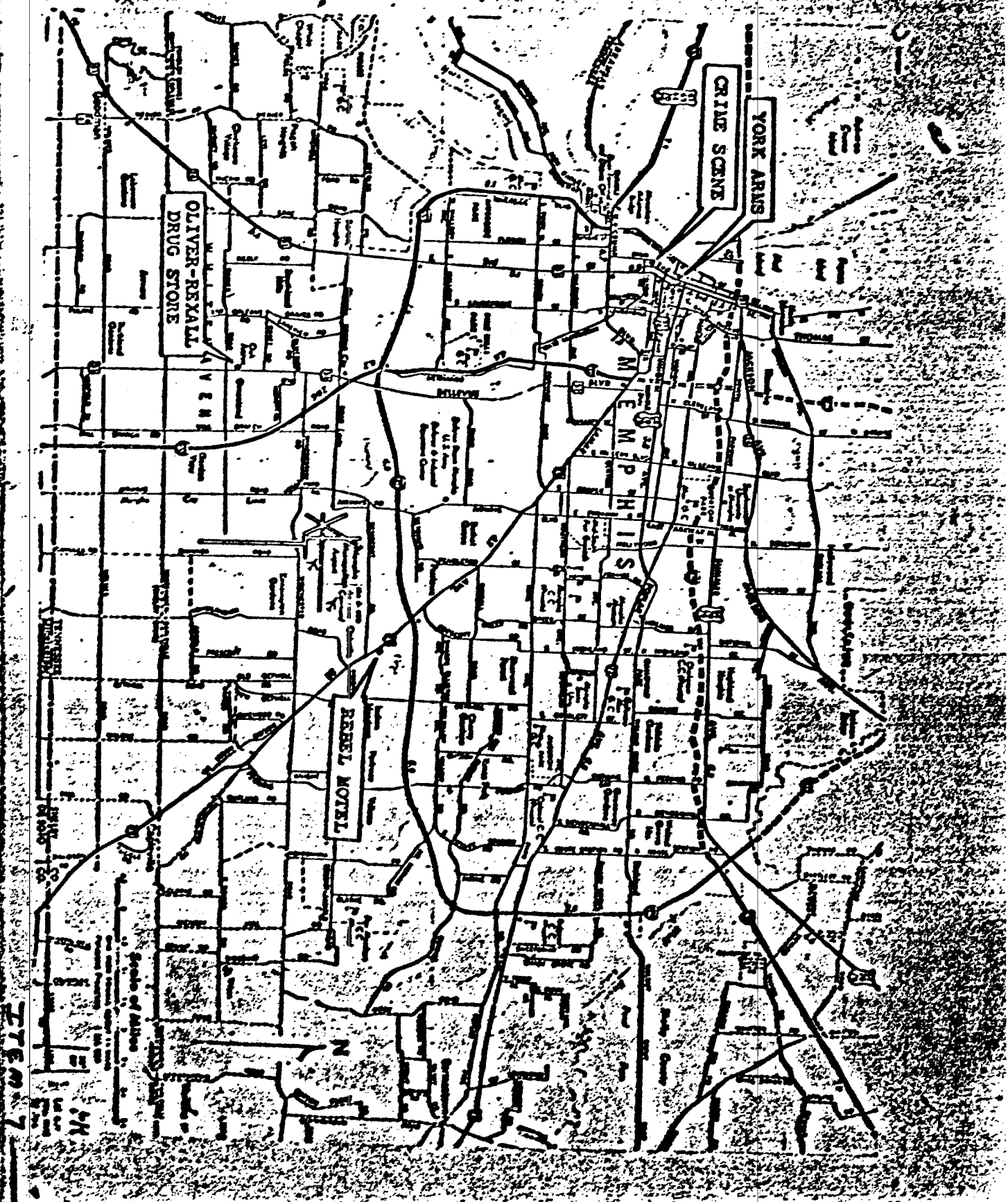
HEAFNER
MEMPHIS PD INFO
MAIS



GARNER'S ROOMING HOUSE
(Galt's Residence)
113 - 14th Street, N.E.

PIEDMONT-AMERICAN LAUNDRY
AND CLEANERS
1168 Peachtree Street, N.E.
(Galt left Laundry 4/1/68;
Picked up 4/5/68)

CAPITOL HOUSES PROJECT
Parking Area 9
(Galt's car abandoned 4/5/68)
Connellly Street and
Memorial Drive, S. E.



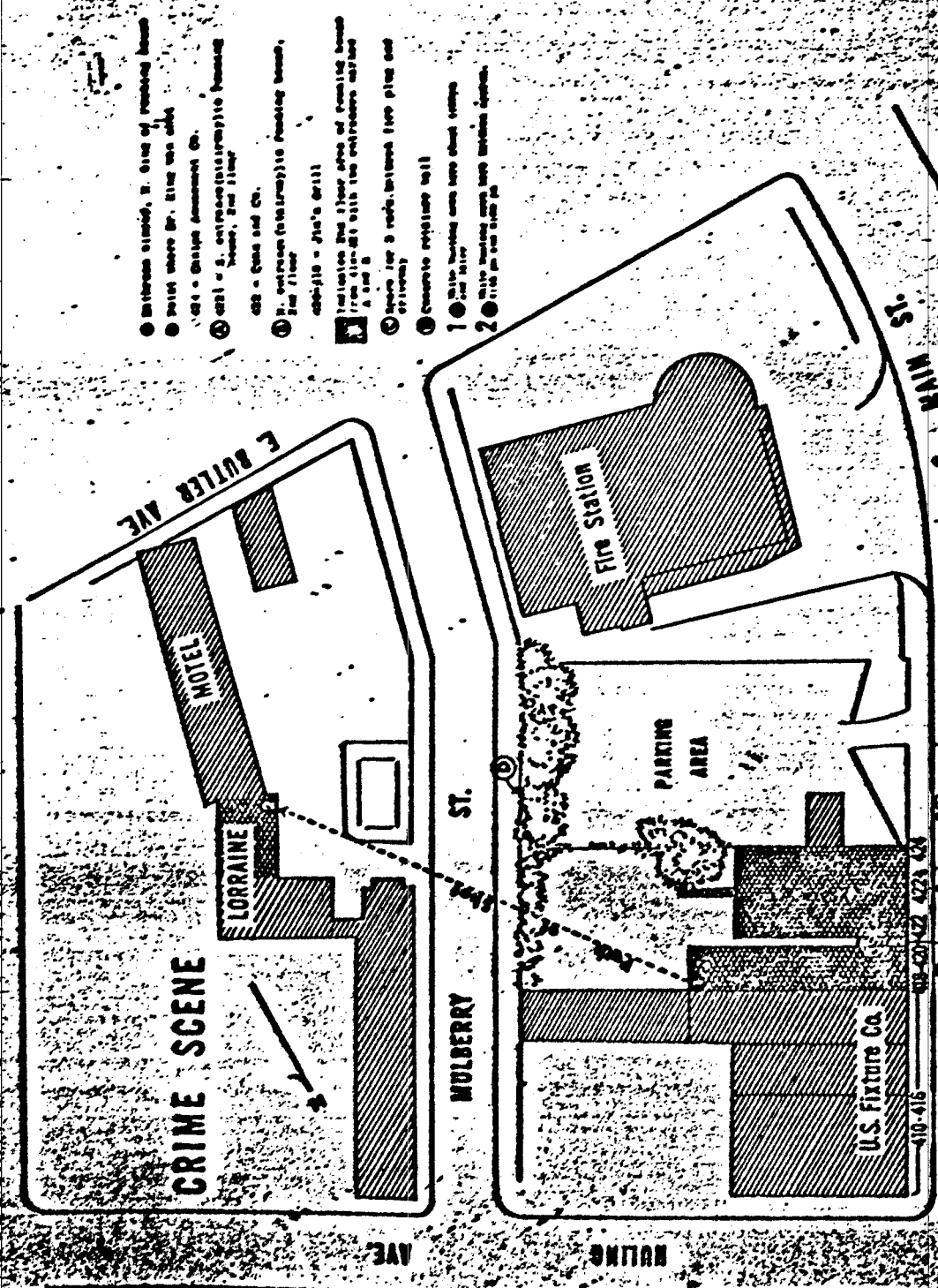
YORK ARMS
CRIME SCENE

OLIVER-REXALL
DRUG STORE

REBEL MOTEL

MEMPHIS

7



- ① Entrance stairs, N. side of building frame
- ② Point where Mr. King was shot
- ③ 102 - Design Department Co.
- ④ 1021 - S. entrance (entrance) to building frame, 2nd floor
- ⑤ 102 - Glass and Co.
- ⑥ 102 - entrance (entrance) to building frame, 2nd floor
- ⑦ 102 - Jit's drill
- ⑧ indicates the floor area of concrete beam from 102-101 with the entrance stairs 2 and 3
- ⑨ Space for 3 rods, between fire plug and driveway
- ⑩ Concrete retaining wall
- 1 ① This building was into about center
- 2 ② This building was into between corners

ITEM 6

ITEM 4

HOLING AVE.

Appts. 2nd
Floor

410-412-414-416
U.S. PRINTING CO.

S. MAIN ST.

418-420
JIM'S
GRILL

422
GORD
AND CO.

NORTH ENTRANCE
(CORRIDOR) TO
ROOMING HOUSE

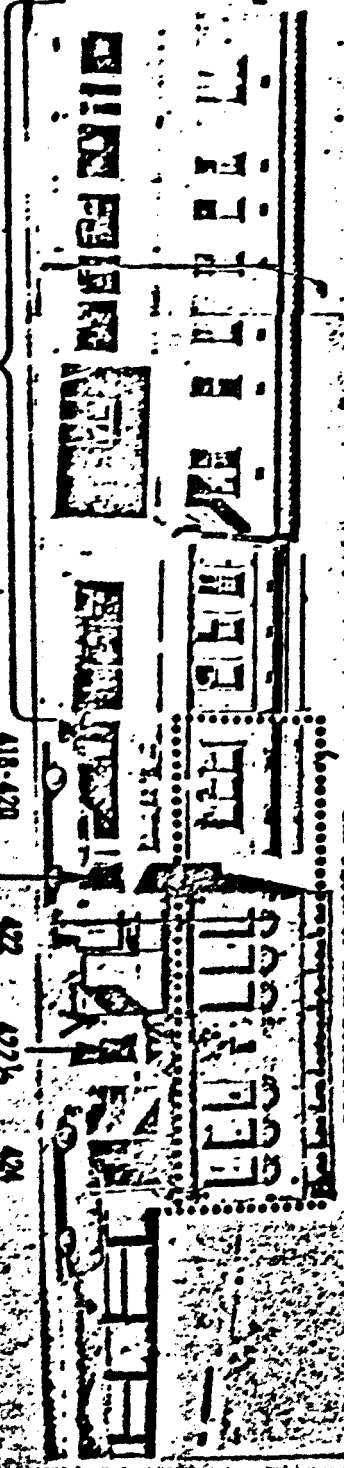
422 1/2
EAST
ENTRANCE
(CORRIDOR) TO
ROOMING HOUSE

424
OAKS
AMUSEMENT
CO.

ROOMING HOUSE OCCUPIES
2ND FLOOR OF BOTH BUILDINGS

COMPOSITE PHOTO OF
410-424 S. MAIN ST.

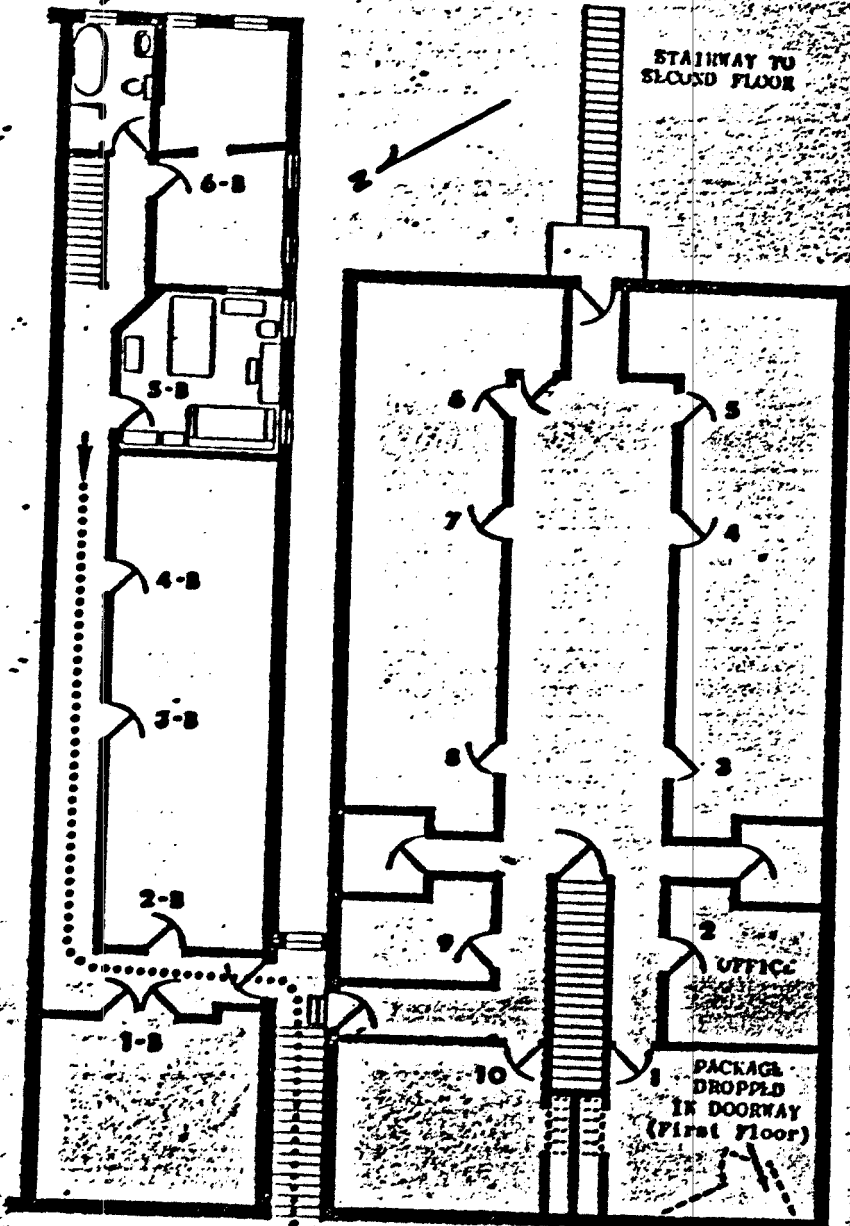
44-35561-5912



SECOND FLOOR PLAN of ROOMING HOUSE

BATHROOM WINDOW
FROM WHERE
SHOT WAS FIRED

STAIRWAY TO
SECOND FLOOR



PROBABLE EXIT ROUTE

418-420

422

422½

424

NORTH ENTRANCE
(stairway)
TO ROOMING HOUSE

SOUTH ENTRANCE
(stairway)
TO ROOMING HOUSE

S. MAIN ST.

ITEMS

MULING AVE.

Apts. 2nd floor

410-412-414-416
U.S. FIXTURES CO.



S. MAIN ST.

418-420
JIM'S GRILL

422
COHEN and CO.
NORTH ENTRANCE (STAIRWAY) TO ROOMING HOUSE

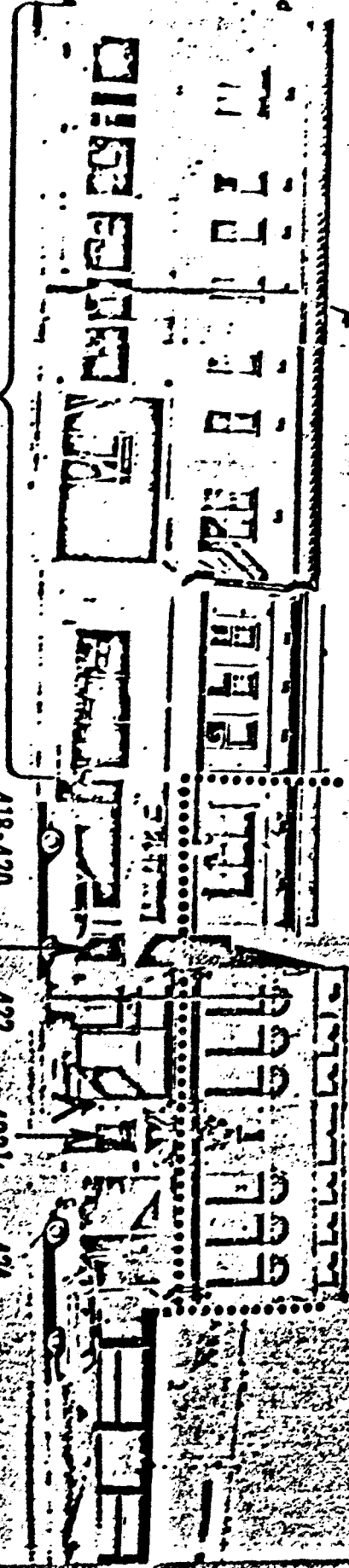
422 1/2
SOUTH ENTRANCE (STAIRWAY) TO ROOMING HOUSE

424
CARINE AMUSEMENT CO.

ROOMING HOUSE OCCUPIES 2ND FLOOR OF BOTH BUILDINGS

COMPOSITE PHOTO of
410-424 S. MAIN ST.

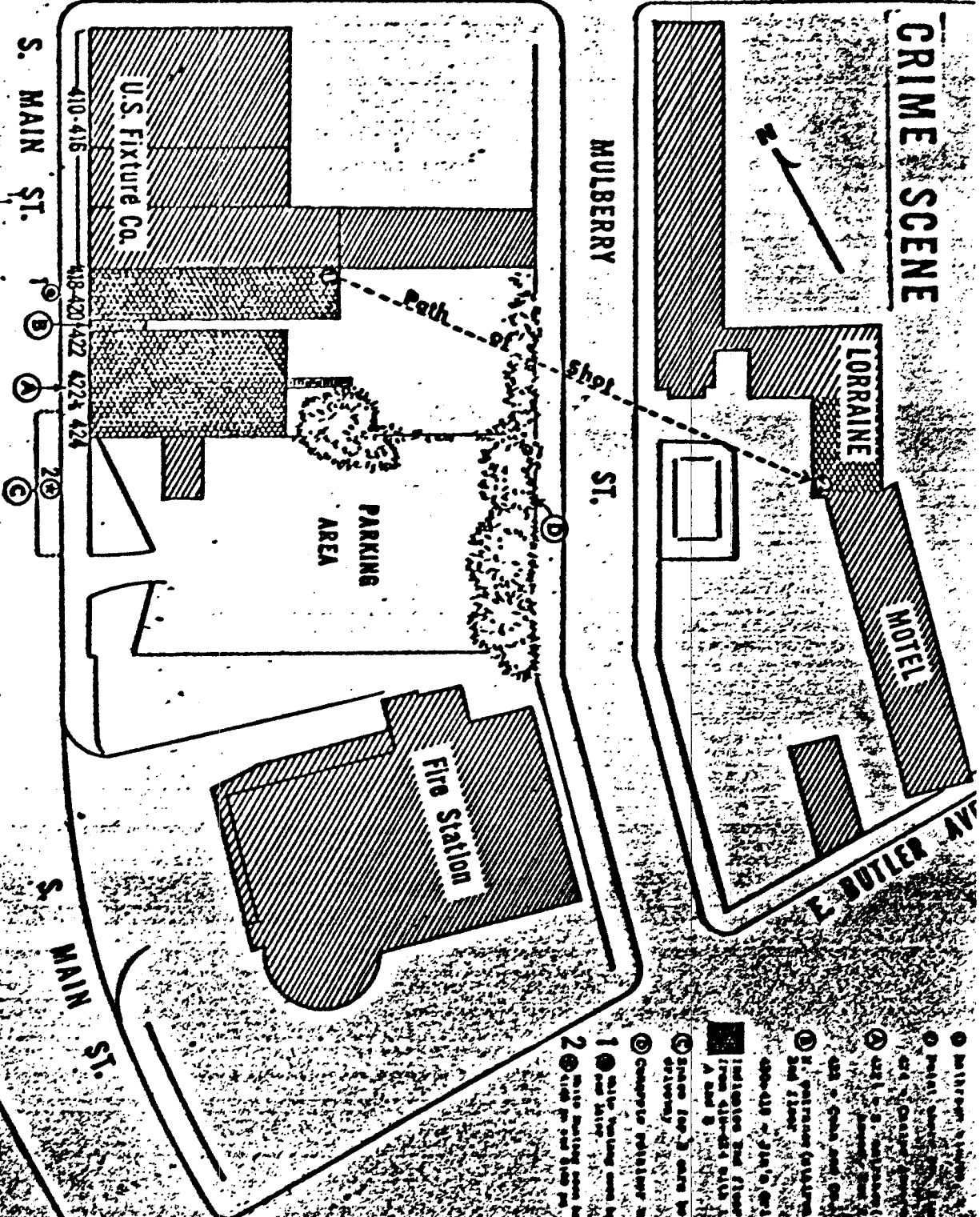
44-5912



HULING

AVE.

CRIME SCENE



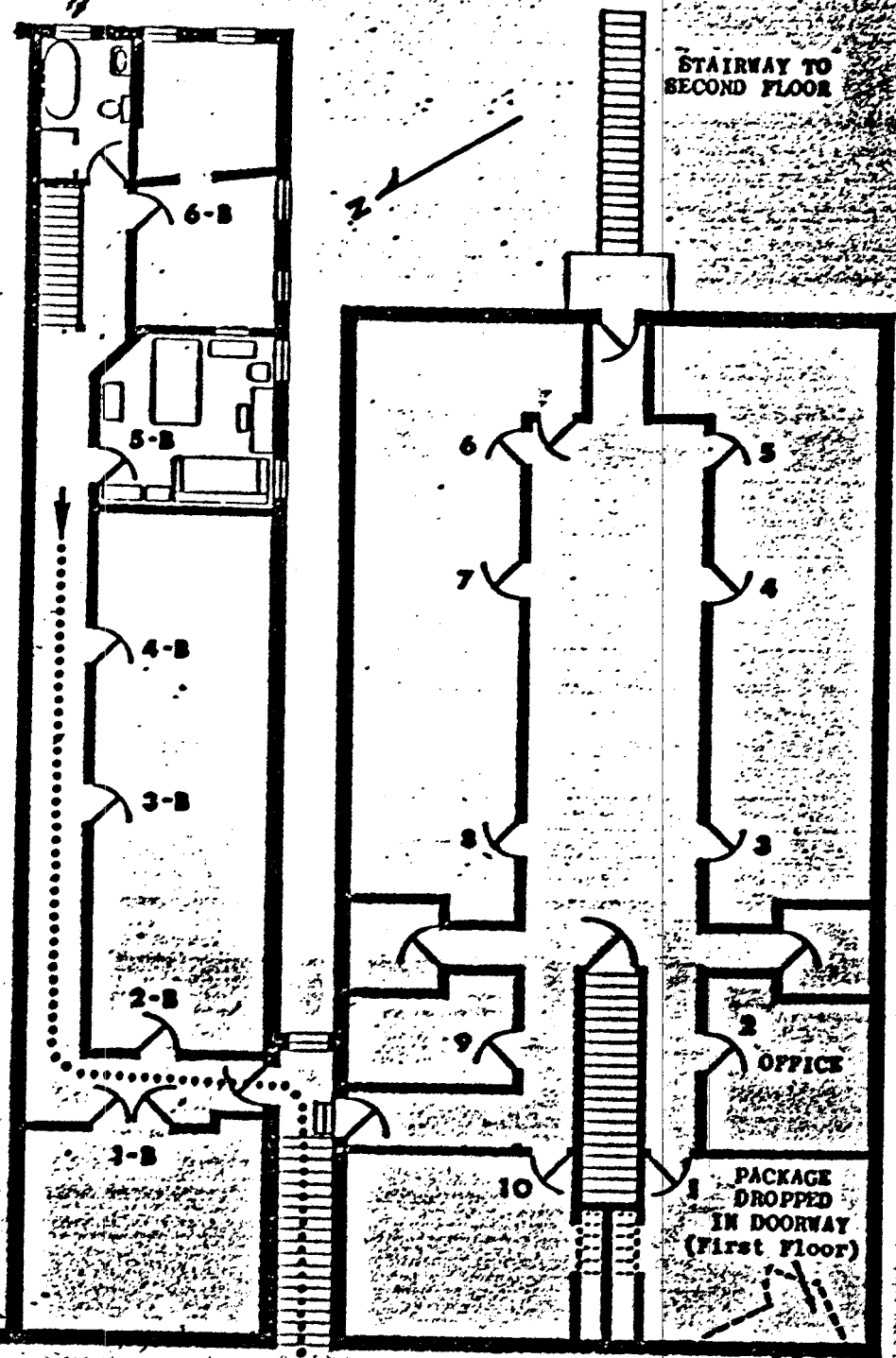
44-38861-5912

- 1. Path of shot from Lorraine Motel to U.S. Fixture Co.
- 2. Shot fired from Lorraine Motel to U.S. Fixture Co.
- 3. Shot fired from U.S. Fixture Co. to Lorraine Motel.
- 4. Shot fired from U.S. Fixture Co. to Fire Station.
- 5. Shot fired from Fire Station to U.S. Fixture Co.
- 6. Shot fired from Fire Station to Lorraine Motel.
- 7. Shot fired from Lorraine Motel to Fire Station.
- 8. Shot fired from Lorraine Motel to U.S. Fixture Co.
- 9. Shot fired from U.S. Fixture Co. to Lorraine Motel.
- 10. Shot fired from U.S. Fixture Co. to Fire Station.
- 11. Shot fired from Fire Station to U.S. Fixture Co.
- 12. Shot fired from Fire Station to Lorraine Motel.
- 13. Shot fired from Lorraine Motel to Fire Station.
- 14. Shot fired from Lorraine Motel to U.S. Fixture Co.
- 15. Shot fired from U.S. Fixture Co. to Lorraine Motel.
- 16. Shot fired from U.S. Fixture Co. to Fire Station.
- 17. Shot fired from Fire Station to U.S. Fixture Co.
- 18. Shot fired from Fire Station to Lorraine Motel.
- 19. Shot fired from Lorraine Motel to Fire Station.
- 20. Shot fired from Lorraine Motel to U.S. Fixture Co.

SECOND FLOOR PLAN of ROOMING HOUSE

BATHROOM WINDOW
FROM WHERE
SHOT WAS FIRED

STAIRWAY TO
SECOND FLOOR



PROBABLE EXIT ROUTE

418-420

422

422½

424

NORTH ENTRANCE
(stairway)
TO ROOMING HOUSE

SOUTH ENTRANCE
(stairway)
TO ROOMING HOUSE

S. MAIN ST.

44-38861-591

44-38861-5912





GARRETT'S ROOMING HOUSE
(Galt's Residence)
115 - 14th Street, N.J.

PIEDMONT-AMERICAN LAUNDRY
AND CLEANERS
1168 Peachtree Street, N.E.
(Galt left laundry 4/1/68;
Picked up 4/5/68)

CAPITOL HOUSES PROJECT
Parking Area 9
(Galt's car abandoned 4/5/68)
Connally Street and
Memorial Drive, S. E.

44-3881-5912



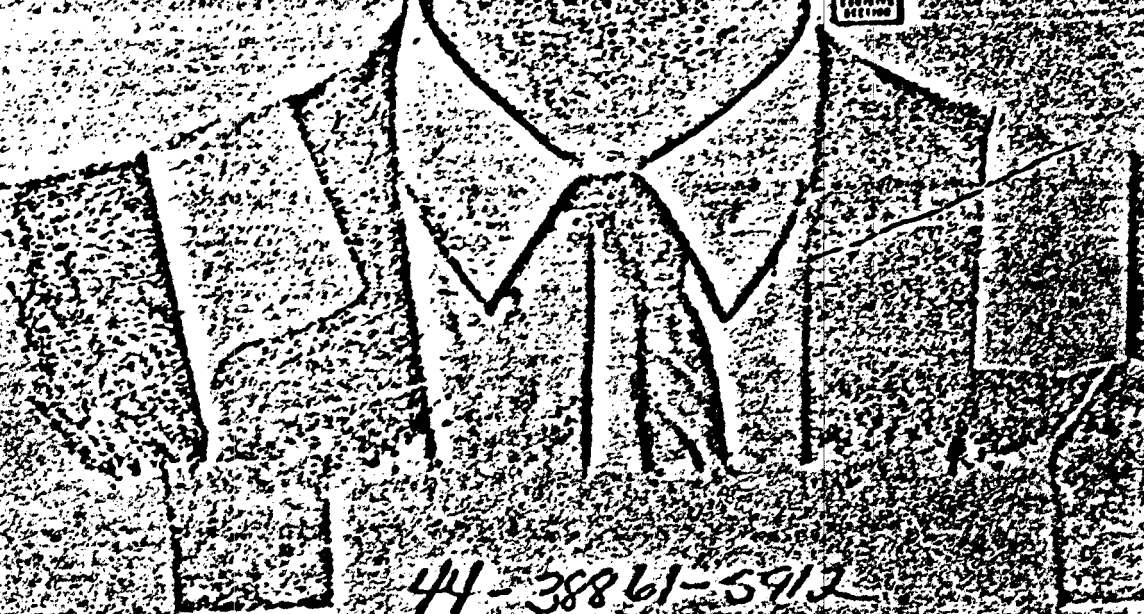
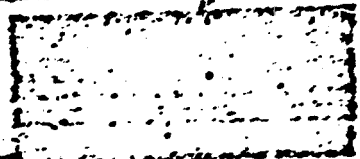
BUR 44-38861 LA 44-1574 6-4-68

44-38861-5912

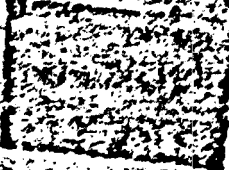
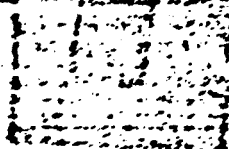
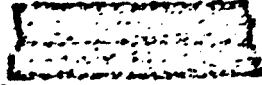


BUR 44-38861 LA 44-1574 6-17-68

44-38861-591



44-38861-5912

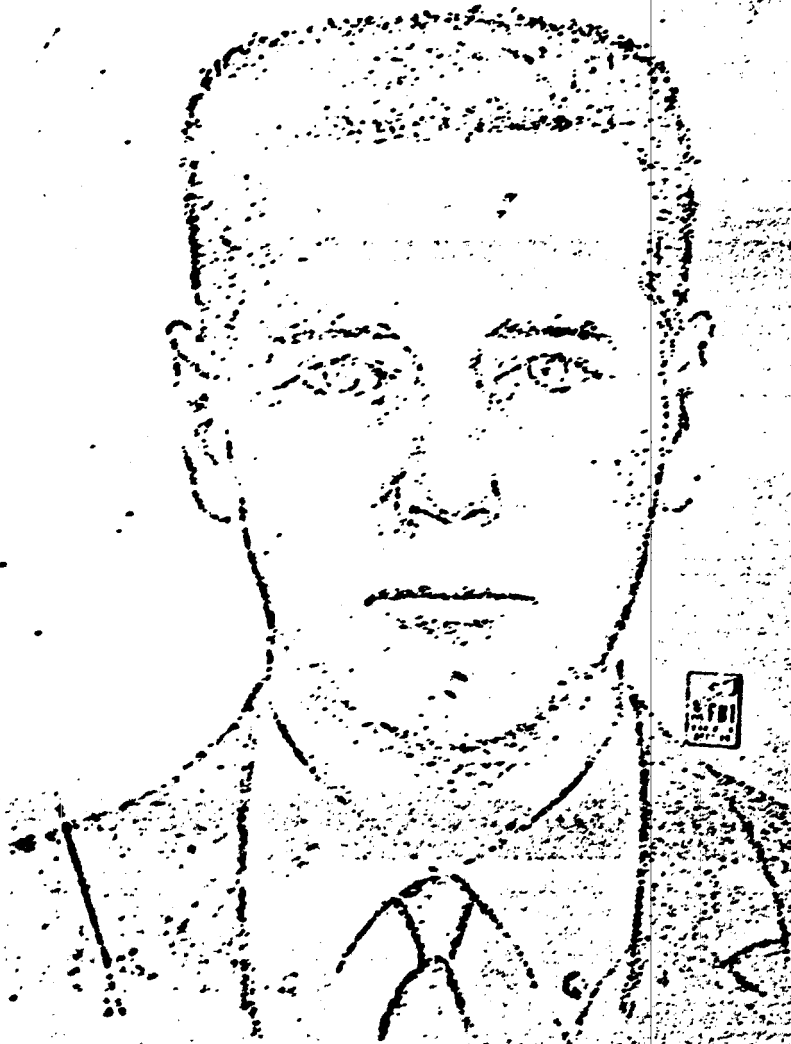


44-38861-5912



FBI
LABORATORY

44-38861-5912



44-3861-3912