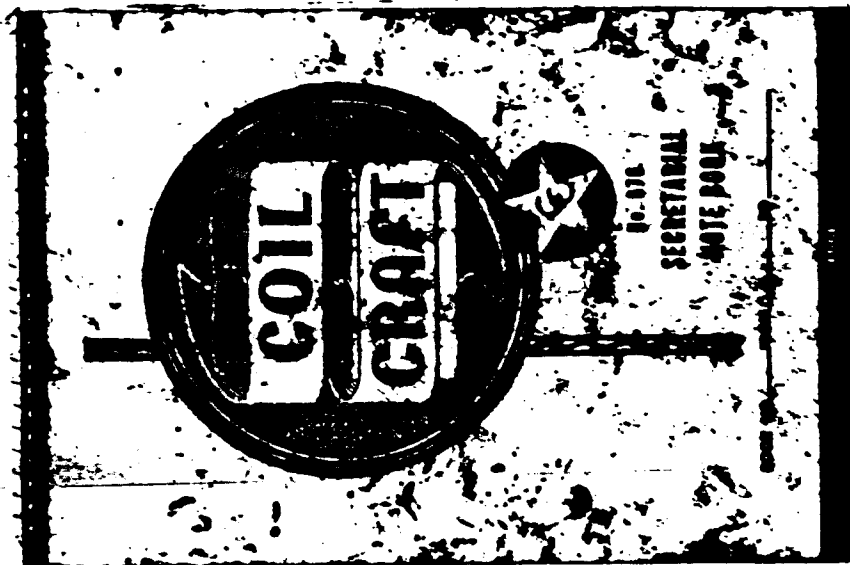


F



F

# HANDS OFF CUBA!

Join the Fair Play for  
Cuba Committee

NEW ORLEANS CHARTER  
MEMBER BRANCH

Free Literature, Lectures

LOCATION:

L. H. OSWALD  
4907 MAGAZINE ST  
NEW ORLEANS, LA.

EVERYONE WELCOME!

# HANDS OFF CUBA!

Join the Fair Play for  
Cuba Committee

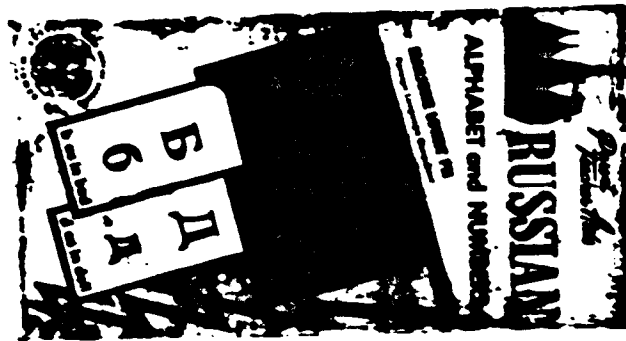
NEW ORLEANS CHARTER  
MEMBER BRANCH

Free Literature, Lectures

LOCATION:

L. H. OSWALD  
4907 MAGAZINE ST  
NEW ORLEANS, LA.

EVERYONE WELCOME!

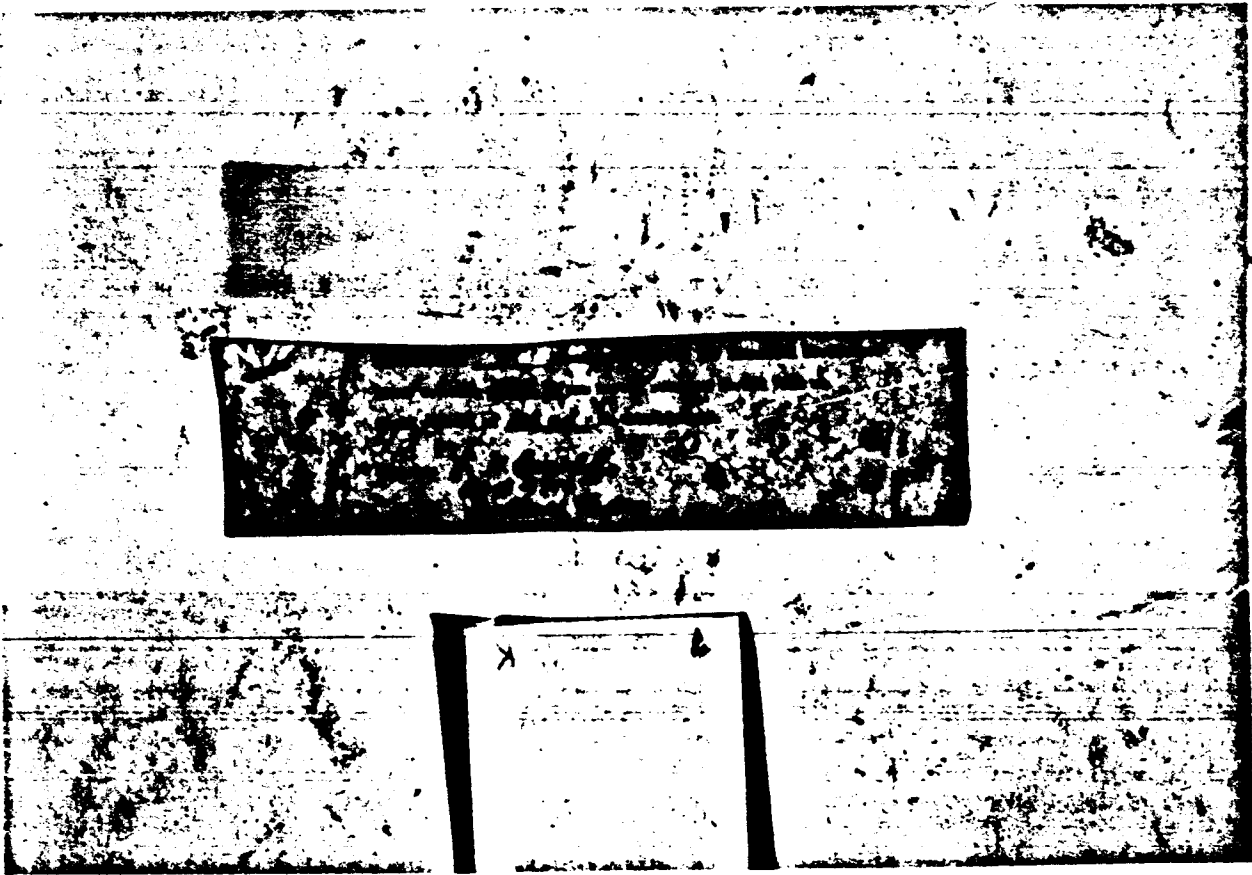


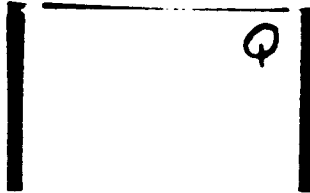
The Socialist Workers Party

K

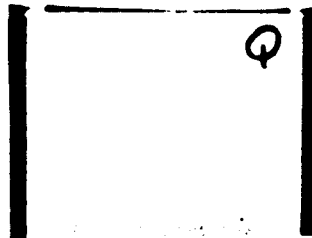
The Socialist Workers Party

K





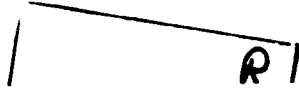
Q



Q

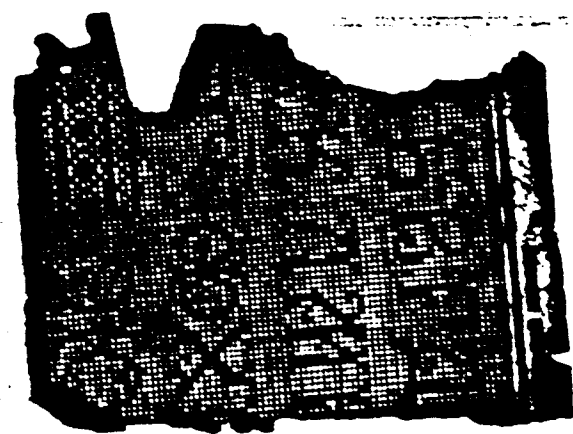
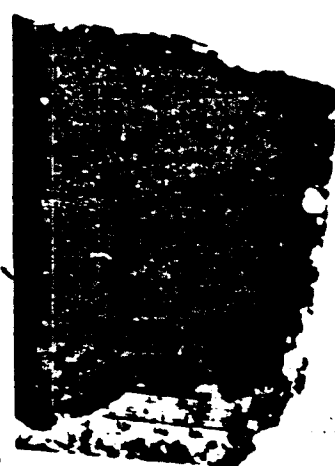
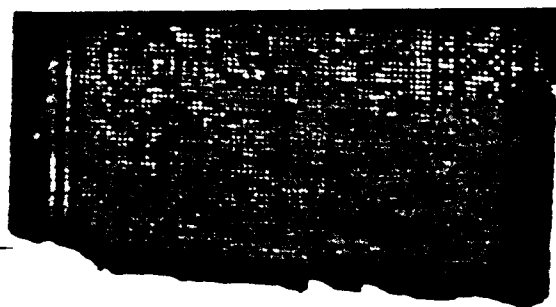
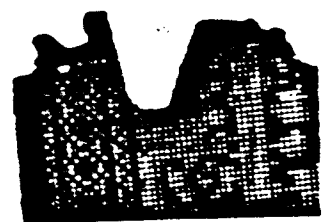
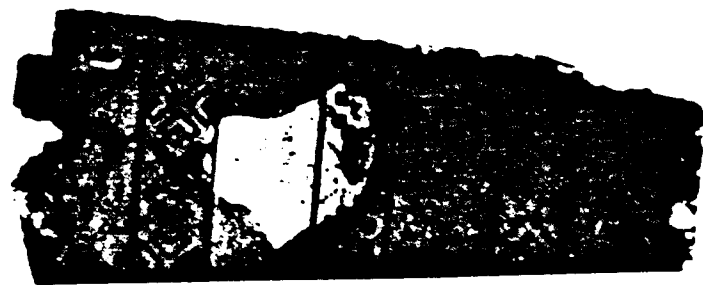
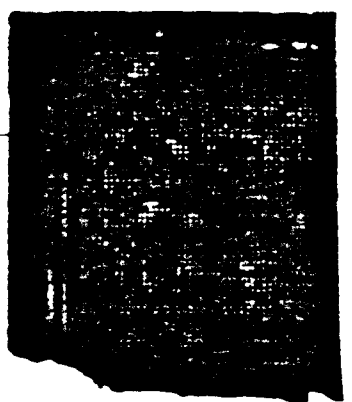
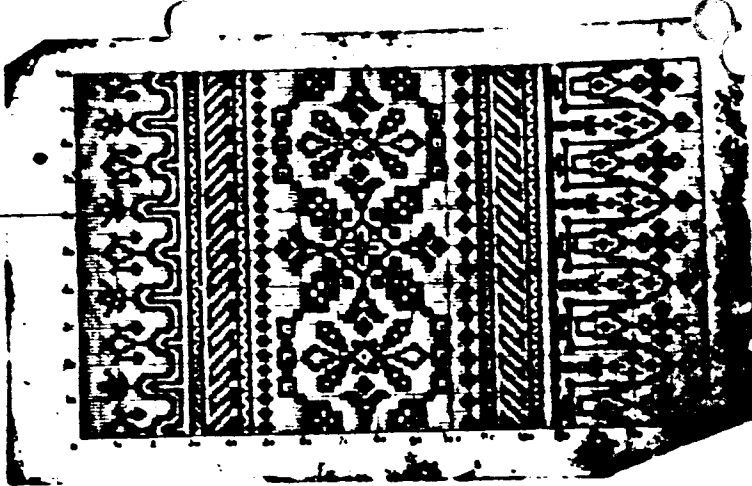


R

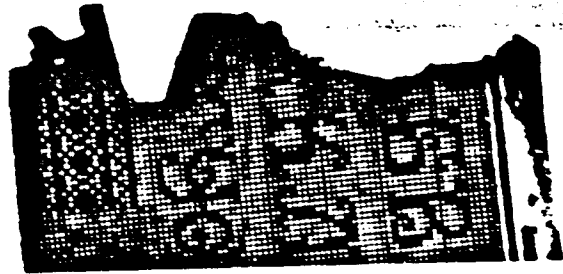
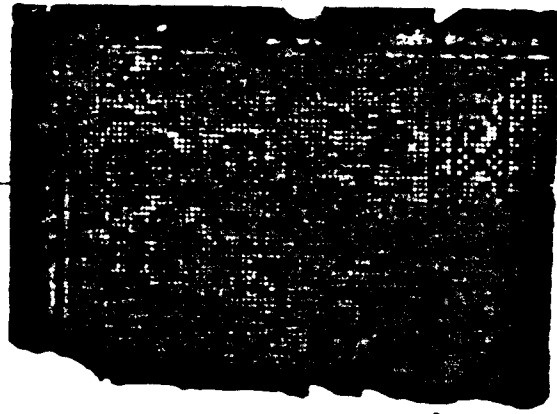


MICHAEL  
PAINE

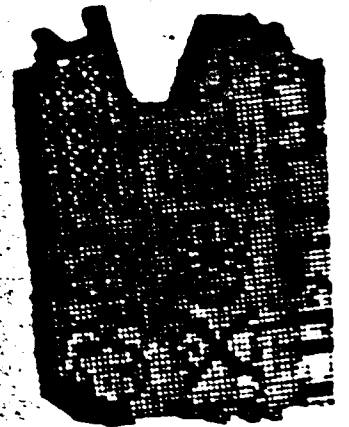
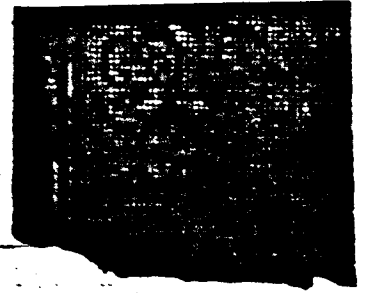
T



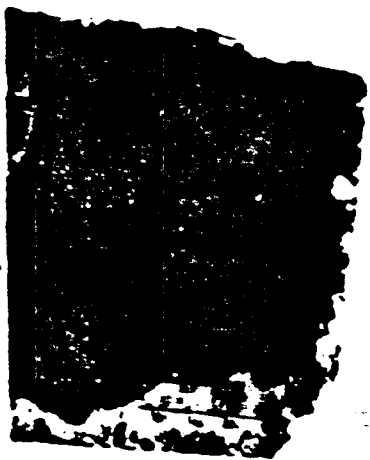
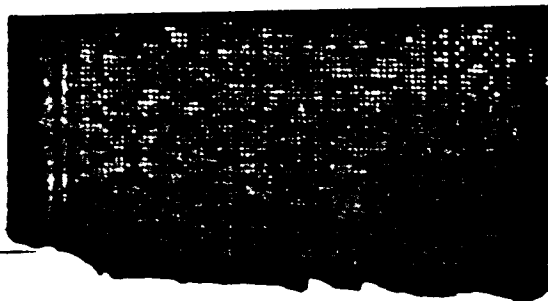
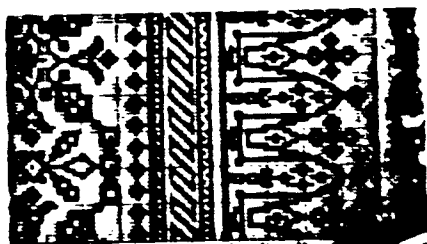
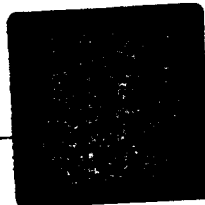
781



781







781

881 mm



188

881 mm



061

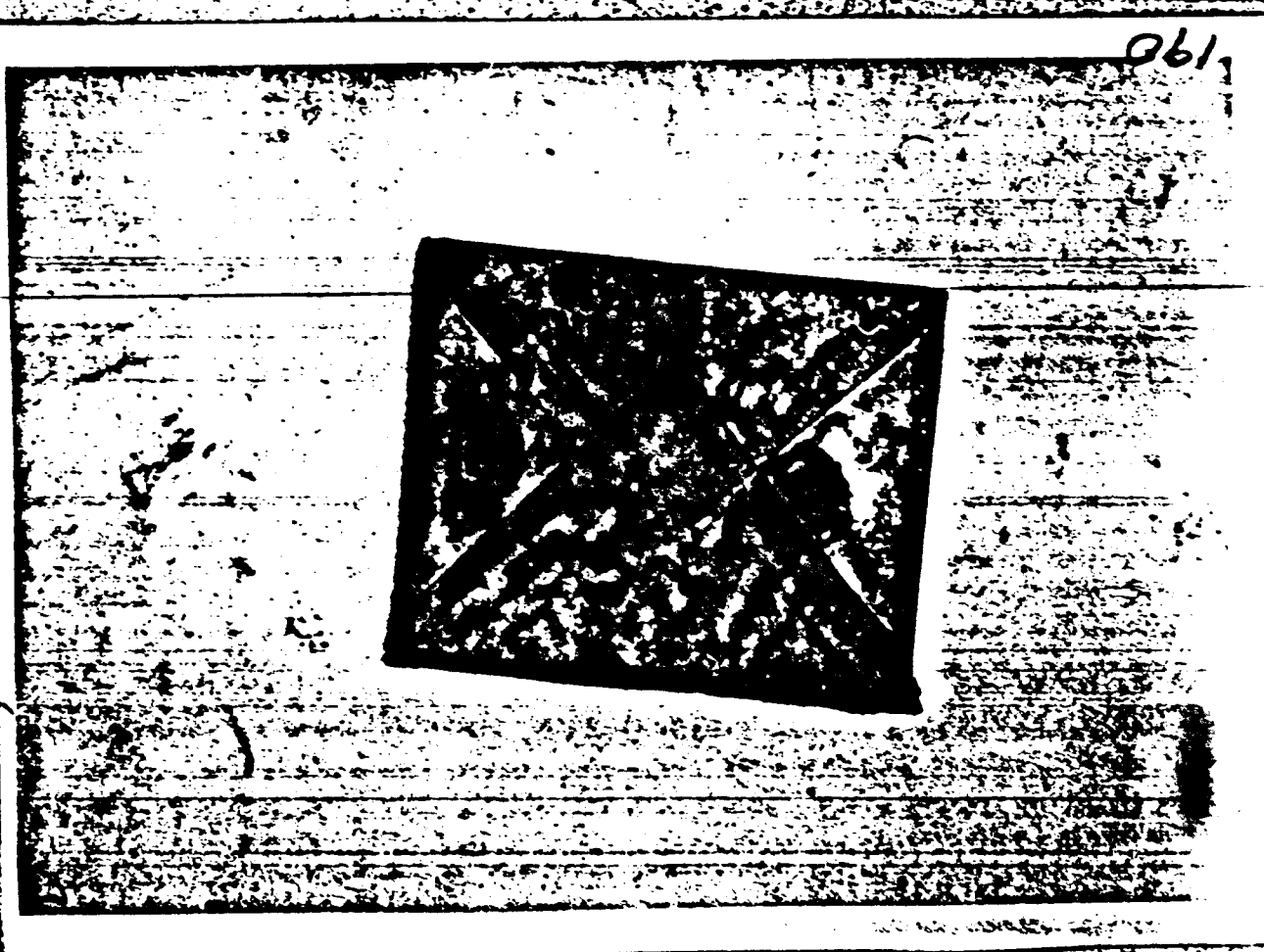
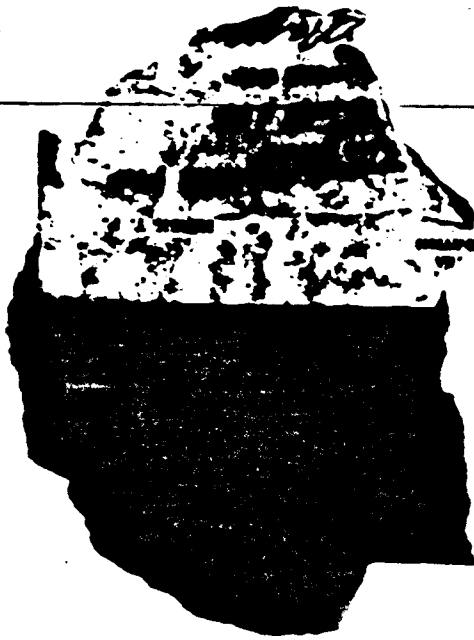


681



stem 189  
189





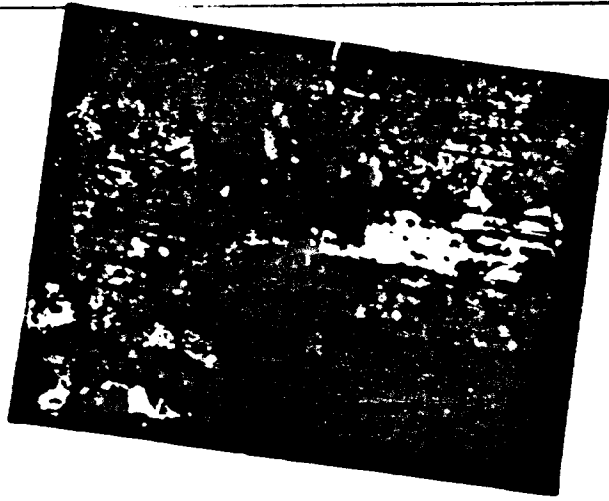


Faint, illegible text, possibly bleed-through from the reverse side of the page.

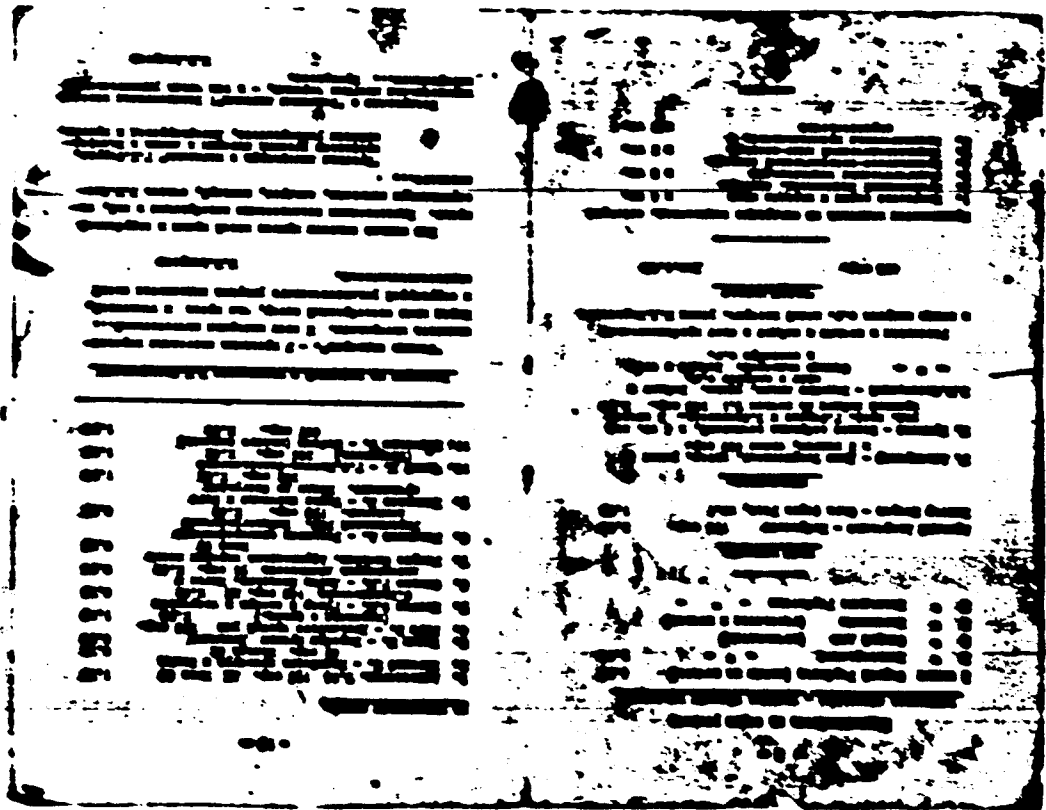
192



Faint, illegible text, possibly bleed-through from the reverse side of the page.



192





Handwritten text in a cursive script, possibly a ledger or account book. The text is arranged in several columns and rows, with some entries appearing to be organized into a table-like structure. The ink is dark and the paper shows signs of age and wear.

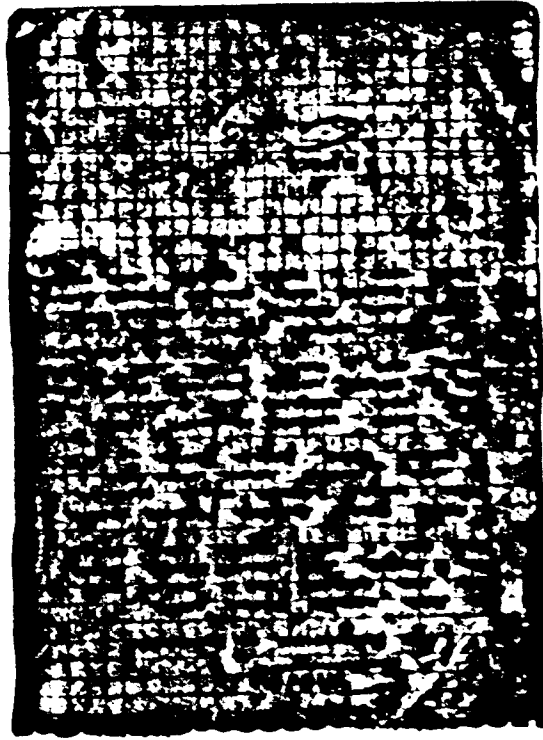
561

Handwritten text in a cursive script, continuing from the top page. The text is arranged in several columns and rows, with some entries appearing to be organized into a table-like structure. The ink is dark and the paper shows signs of age and wear.



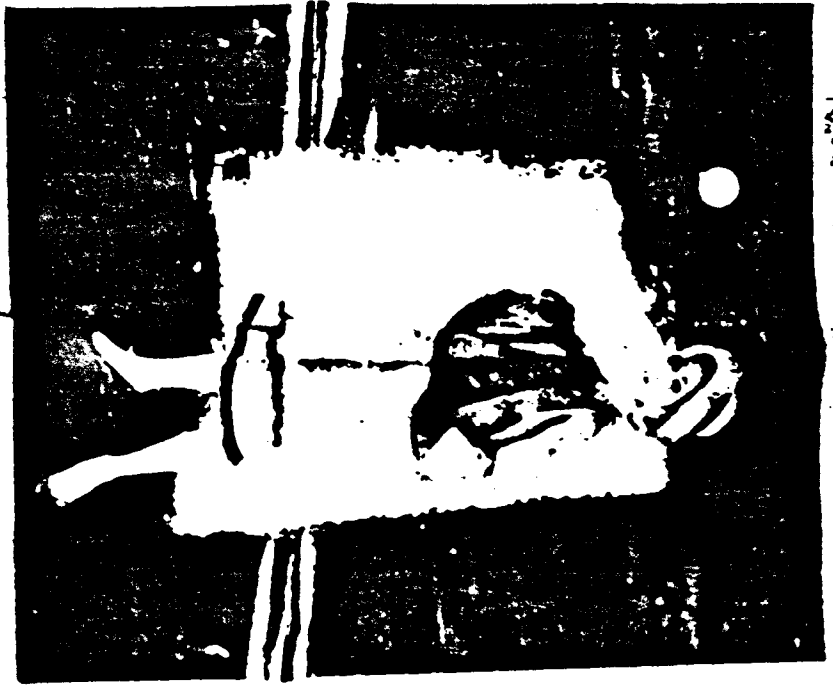


261



961

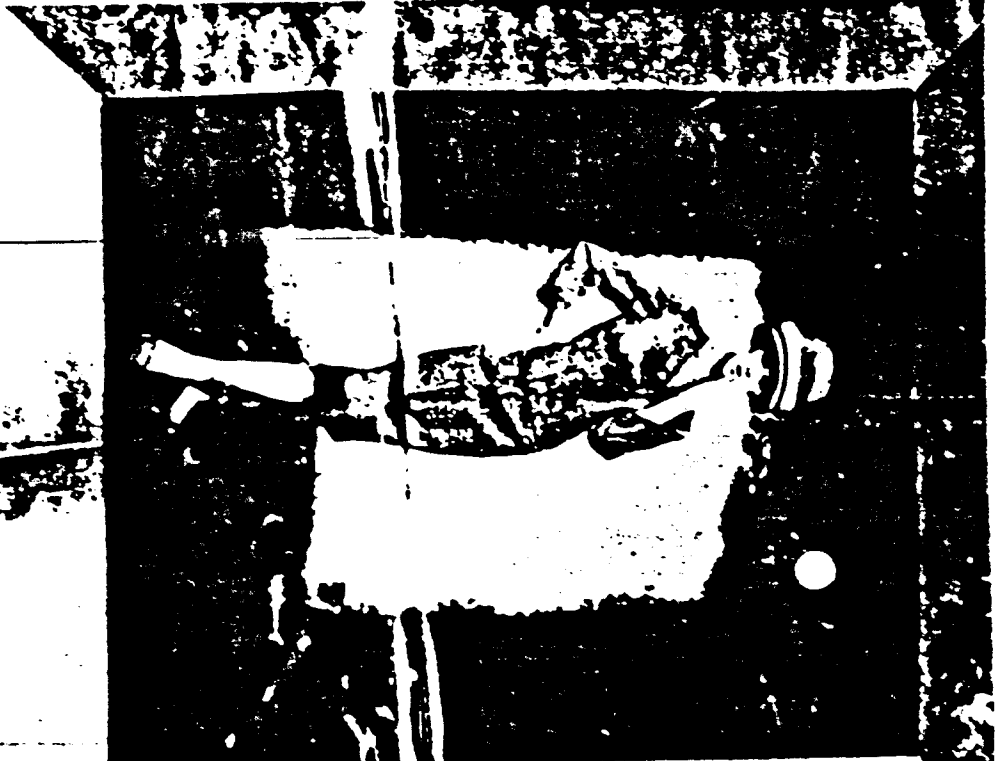




MARIGNAN

... MARIGNAN ...

861



MARIGNAN

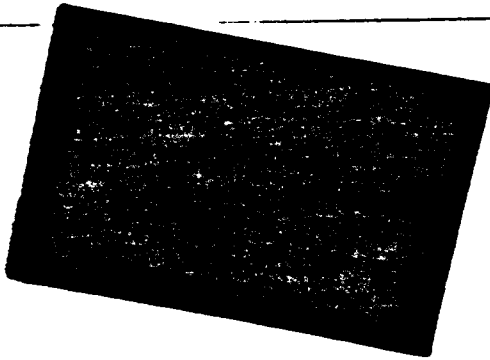
... MARIGNAN ...

100



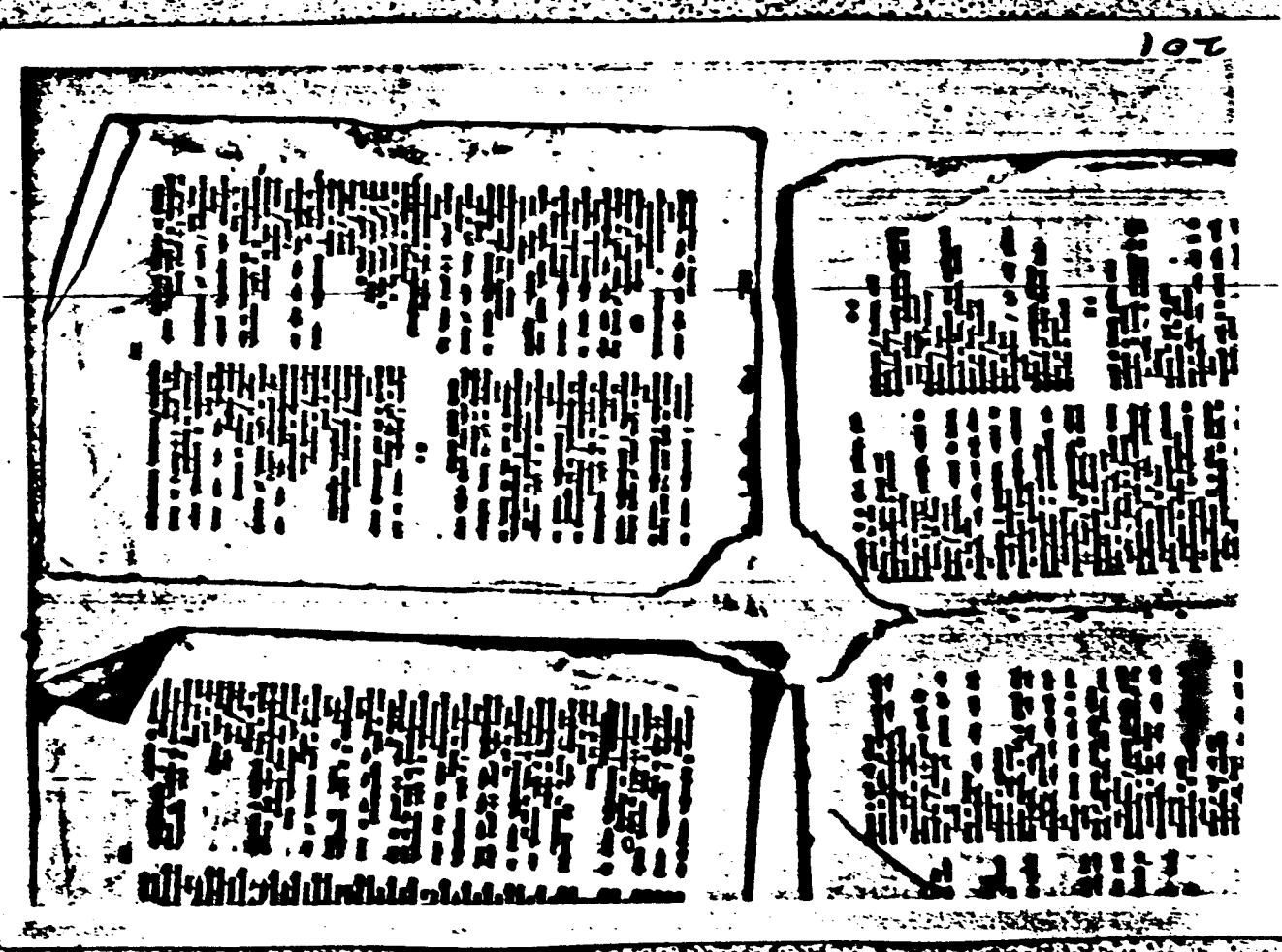
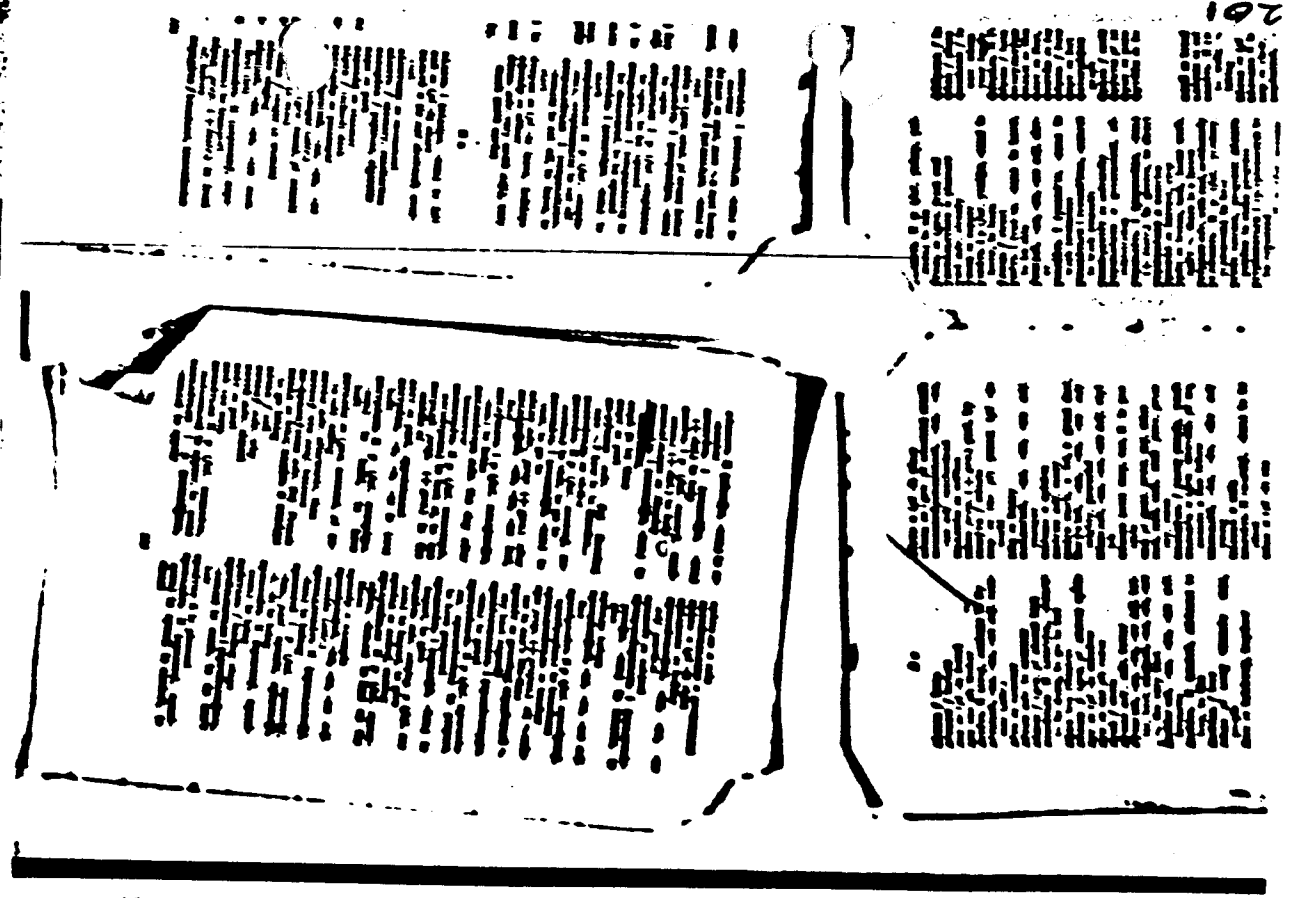
661

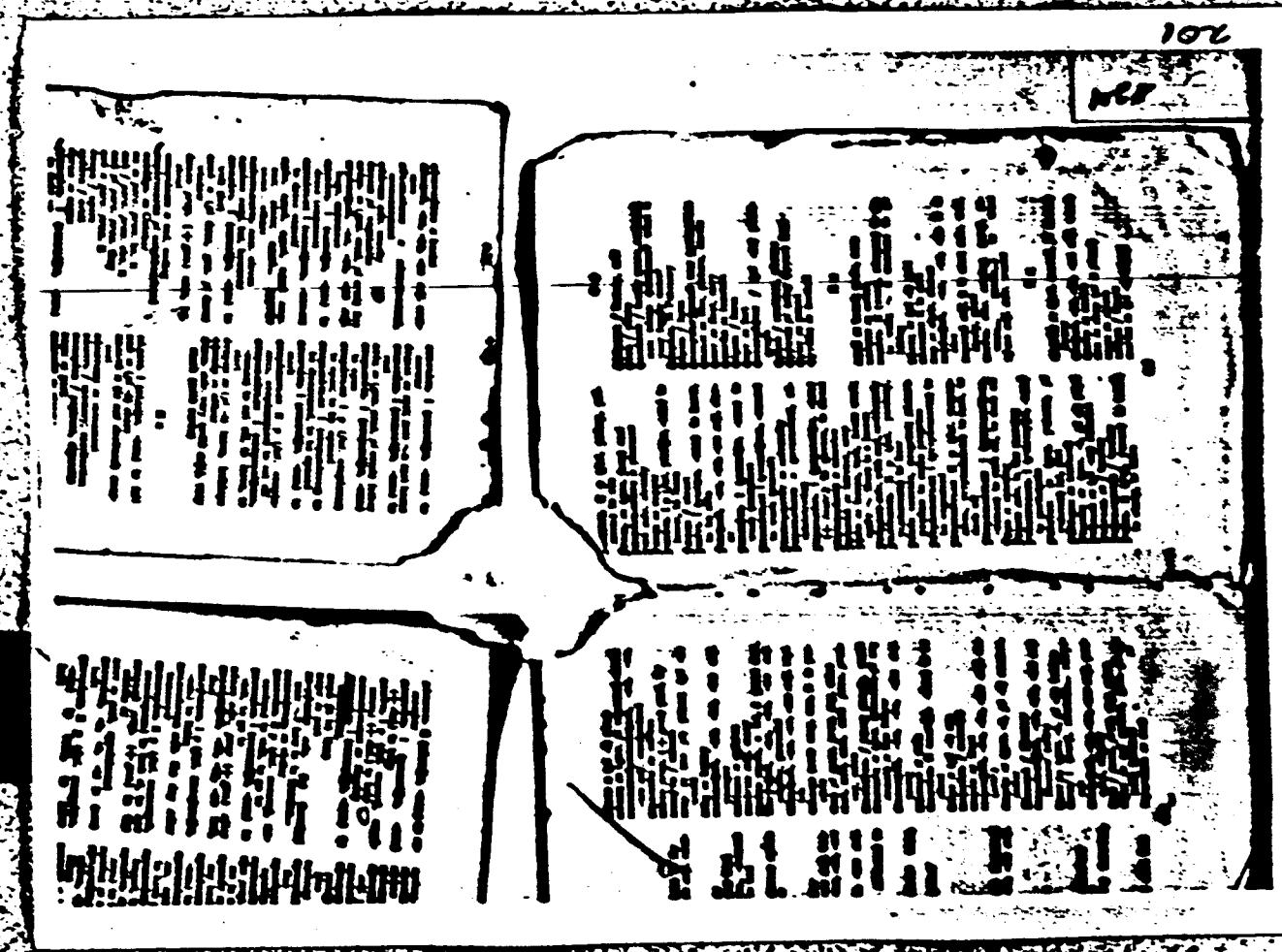
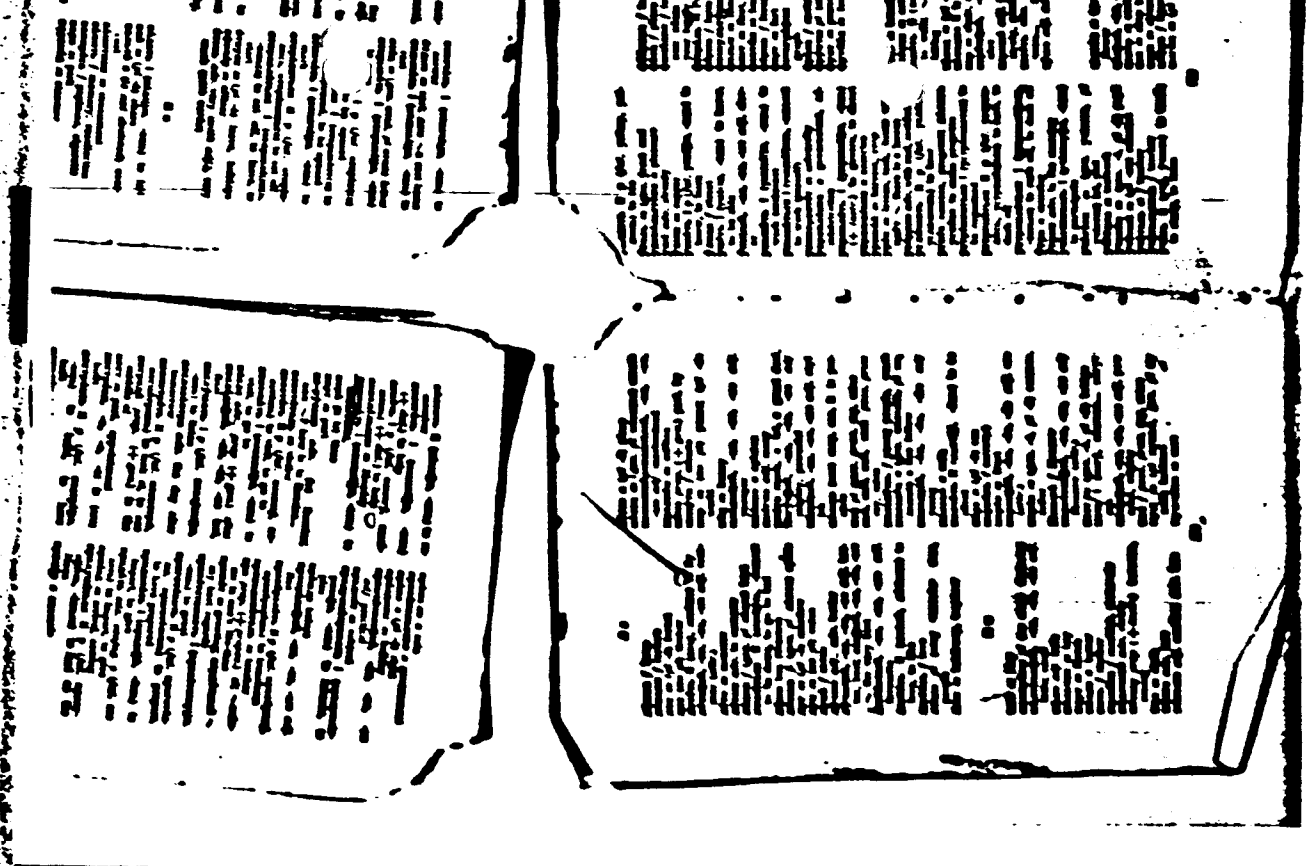




200







Fragment of a manuscript page with dense, illegible text in a single column.

Fragment of a manuscript page with dense, illegible text in a single column.



Text on the left page of the top manuscript, consisting of several columns of dense, handwritten characters.

Text on the right page of the top manuscript, consisting of several columns of dense, handwritten characters.

Text on the left page of the middle manuscript, consisting of several columns of dense, handwritten characters.

Text on the right page of the middle manuscript, consisting of several columns of dense, handwritten characters.

Text on the left page of the bottom manuscript, consisting of several columns of dense, handwritten characters.

Text on the right page of the bottom manuscript, consisting of several columns of dense, handwritten characters.

Text on the left page of the bottom manuscript, consisting of several columns of dense, handwritten characters.

Text on the right page of the bottom manuscript, consisting of several columns of dense, handwritten characters.

Fragment of ancient script, top right. The text is arranged in approximately 12 vertical columns, with some characters appearing to be in a different script than the surrounding fragments.

Fragment of ancient script, top left. The text is arranged in approximately 12 vertical columns, similar to the fragment on the right.

Fragment of ancient script, bottom right. The text is arranged in approximately 12 vertical columns.

Fragment of ancient script, bottom left. The text is arranged in approximately 12 vertical columns.

203

film 203

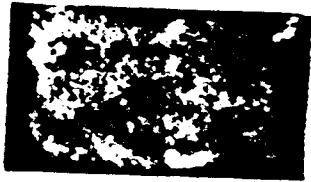


203

film 203



204



204

204

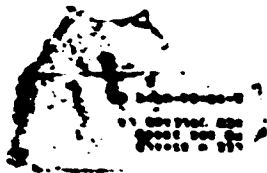


206

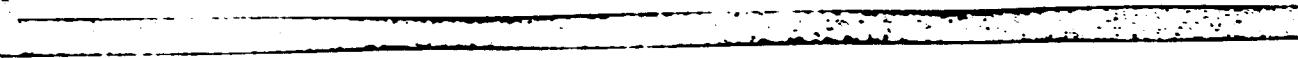


206

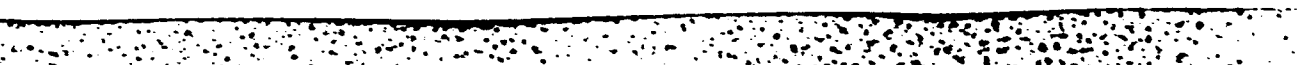
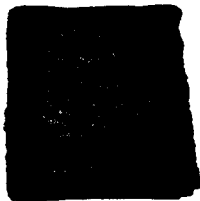
206



246  
105a



207  
105a



208



208

208

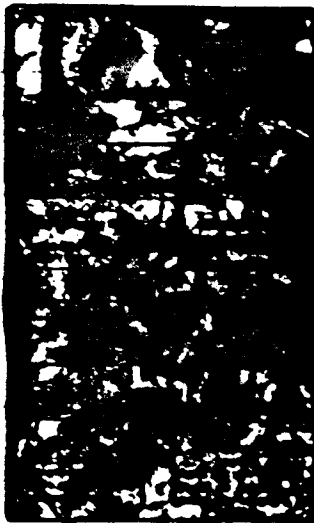


Stem 209

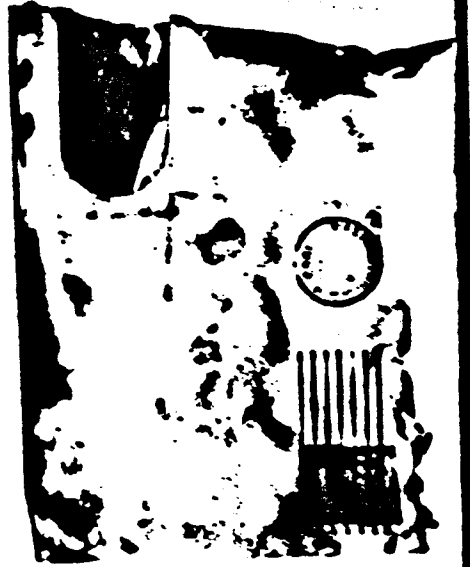


209

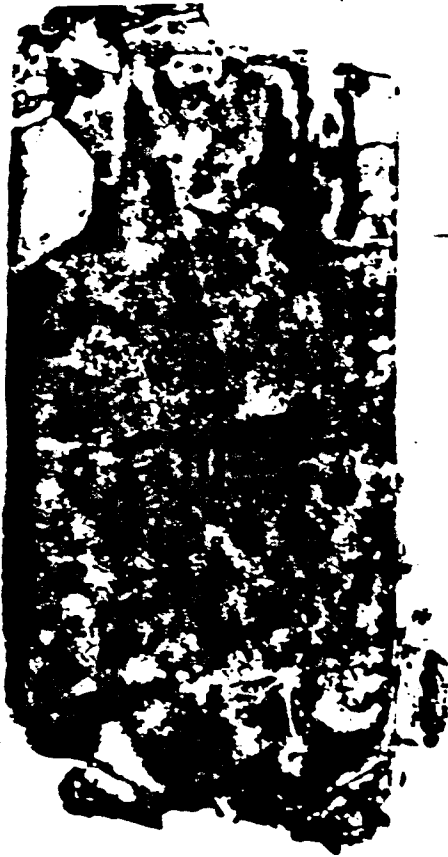
Stem 209

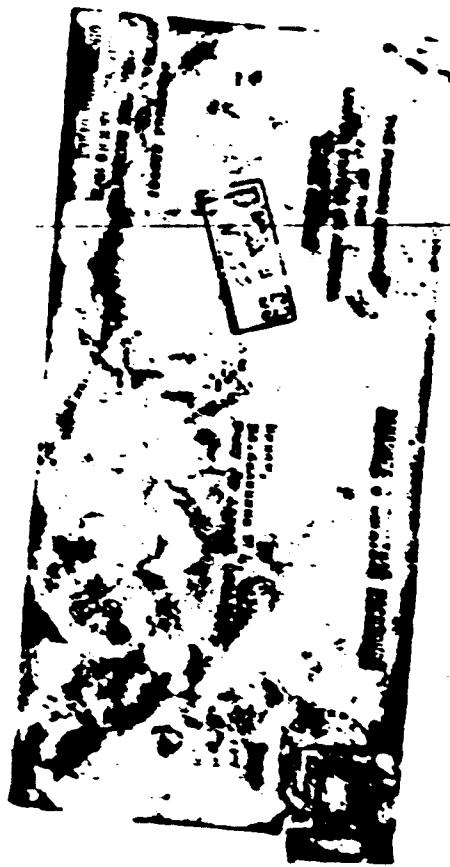
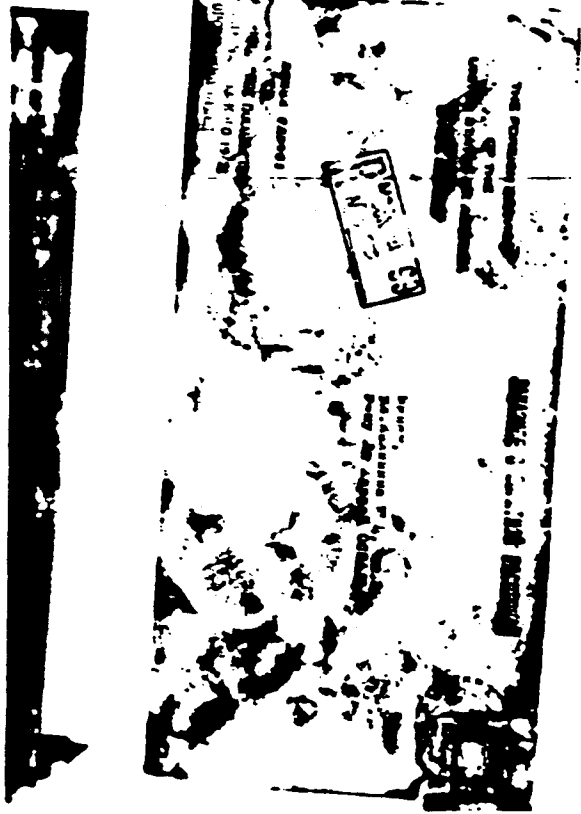






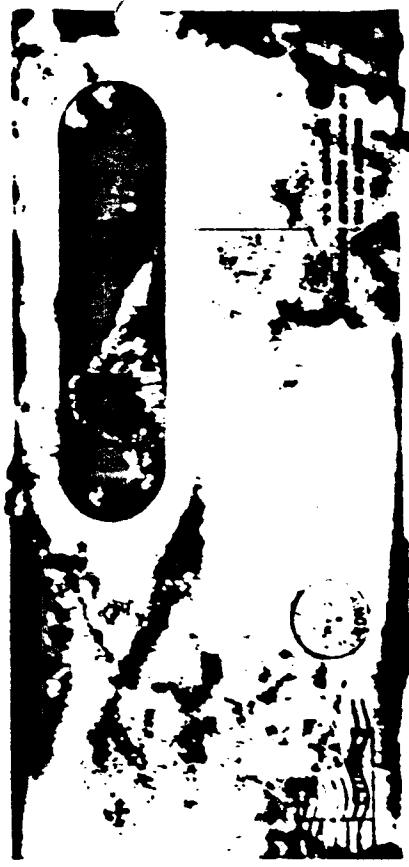
210-215





210-218

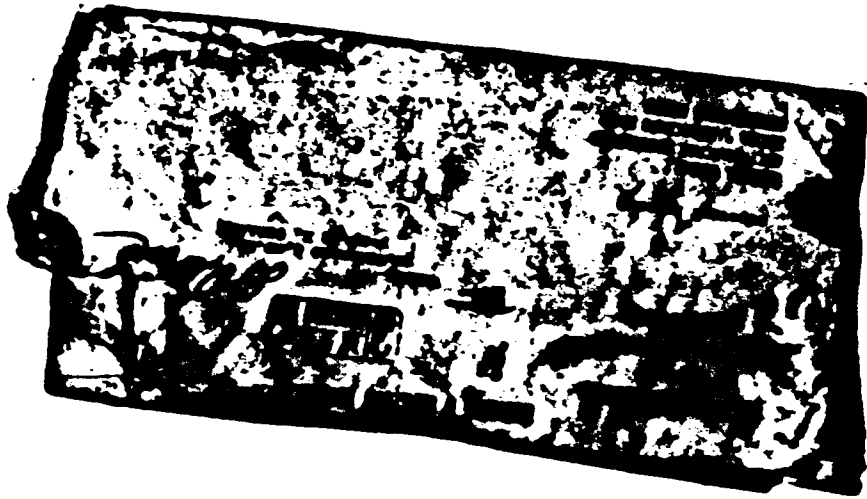
210-218



210-218



1313 Savanport  
 New H. Del.  
 1st Ward  
 Texas  
 Mr. A. C. Par Avion  
 Dallas, Texas  
 7-11-41



210-218





618#

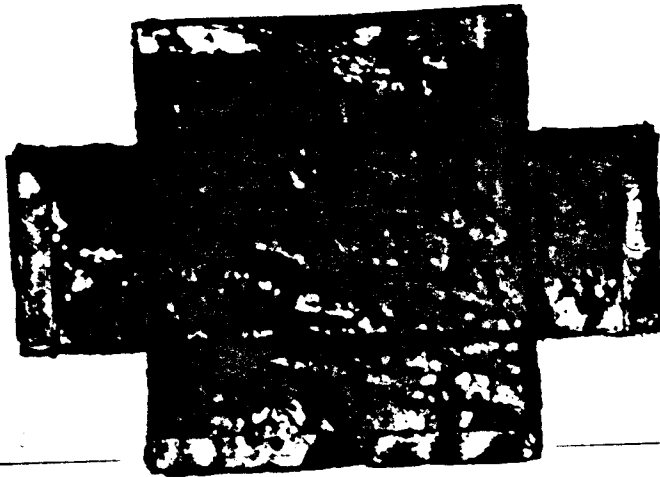


618#



RUTH  
PAINE

U



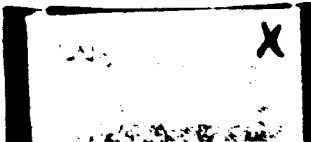
W



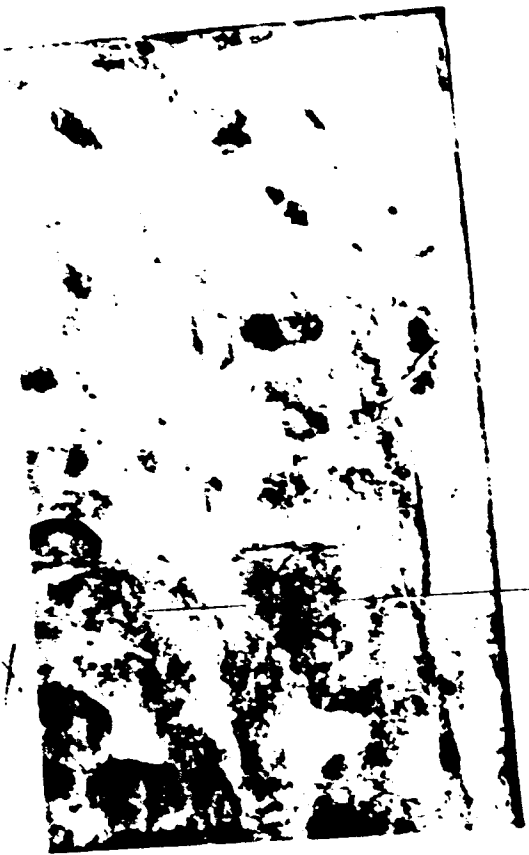
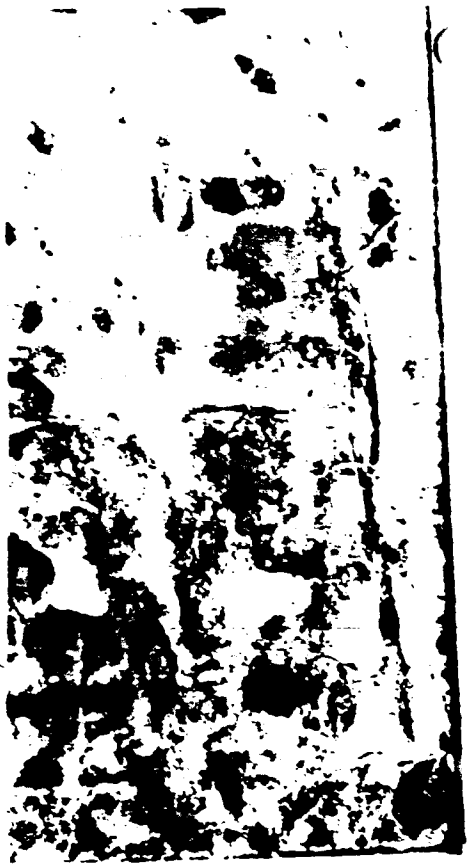
W

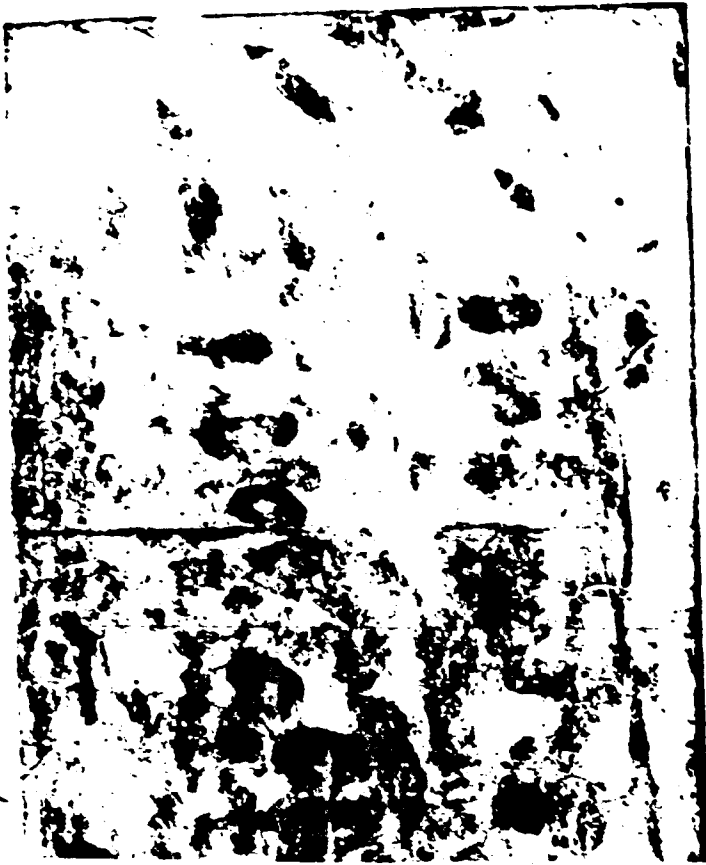


X







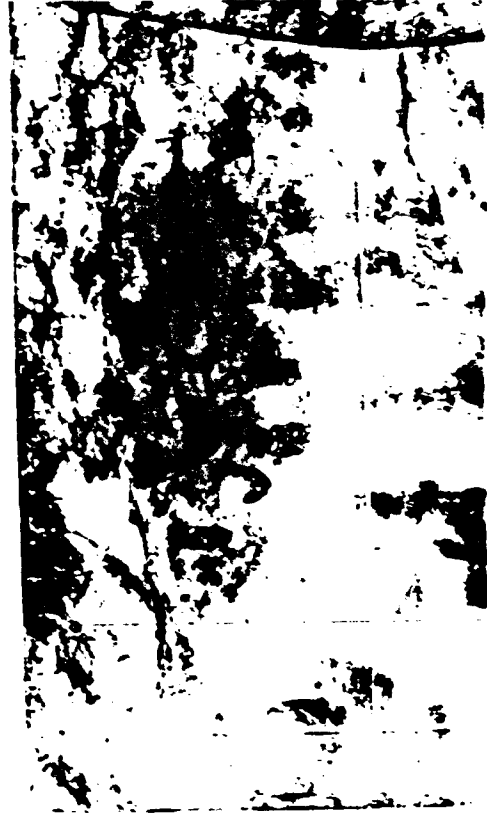




X



X

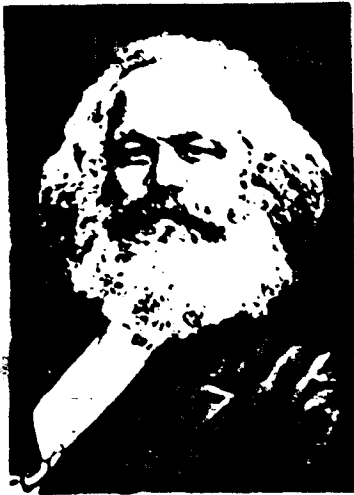


X





Y — Y



AA

# HANDS OFF CUBA!

Join the Fair Play for  
Cuba Committee

NEW ORLEANS CHARTER  
MEMBER BRANCH

Free Literature, Lectures

LOCATION:

# HANDS OFF CUBA!

Join the Fair Play for  
Cuba Committee

NEW ORLEANS CHARTER  
MEMBER BRANCH

Free Literature, Lectures

LOCATION:

EVERYONE WELCOME!

AA

EVERYONE WELCOME!

# HANDS OFF CUBA!

Join the Fair Play for  
Cuba Committee

NEW ORLEANS CHARTER  
MEMBER BRANCH

Free Literature, Lectures

LOCATION:

# HANDS OFF CUBA!

Join the Fair Play  
Cuba Committee

NEW ORLEANS CHARTER  
MEMBER BRANCH

Free Literature, Lectures

LOCATION:

AA

EVERYONE WELCOME!

EVERYONE WELCOME!



AA



AA

AA



AA







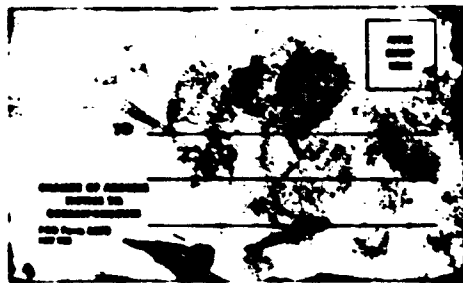
AB



AD



AE



AE