



Ex.No.5301-A SENATOR,Geo. Deposition  
Washington,D.C. 4-22-64

Ex.No.5301-A ARMSTRONG,A. Deposition  
Dallas 4-14-64



Ex. No. 5301-B SENATOR, Geo. Deposition  
Washington, D.C. 4-22-64

Ex. No. 5301-B ARMSTRONG, A. Deposition  
Dallas 4-14-64



Ex. No. 9301-B SENATOR, Geo. Deposition  
Washington, D.C. 2-64

Ex. No. 9301-C ARMSTRONG A. Deposition  
Dallas 4-11-64



Ex.No.5301- SENATOR, Geo. Deposition  
Washington, D.C. 4-22-64

Ex.No.5301-D ARMSTRONG, A. Deposition  
Dallas 4-14-64



Ex.No.5301-E SENATOR,Geo. Deposition  
Washington,D.C. 4-22-64

Ex.No.5301-E ARMSTRONG,A. Deposition  
Dallas 4-24-64




Ex.No.5302

SENATOR, Geo. Deposition  
Washington, D.C. 4-22-64

Ex.No.5302

ARMSTRONG, A. Deposition  
Dallas 4-14-64



Ex. No. 5303-A SENATOR, Geo. Deposition  
Washington, D.C., 4-22-54

Ex. No. 5303-A ARMSTRONG, A. Deposition  
Dallas 4-14-64





Ex. No. 5303-B ARMSTRONG, A. Deposition  
Dallas 4-14-64



Ex. No. 5303-B SENATOR, Geo. Deposition  
Washington, D.C. 4-22-64



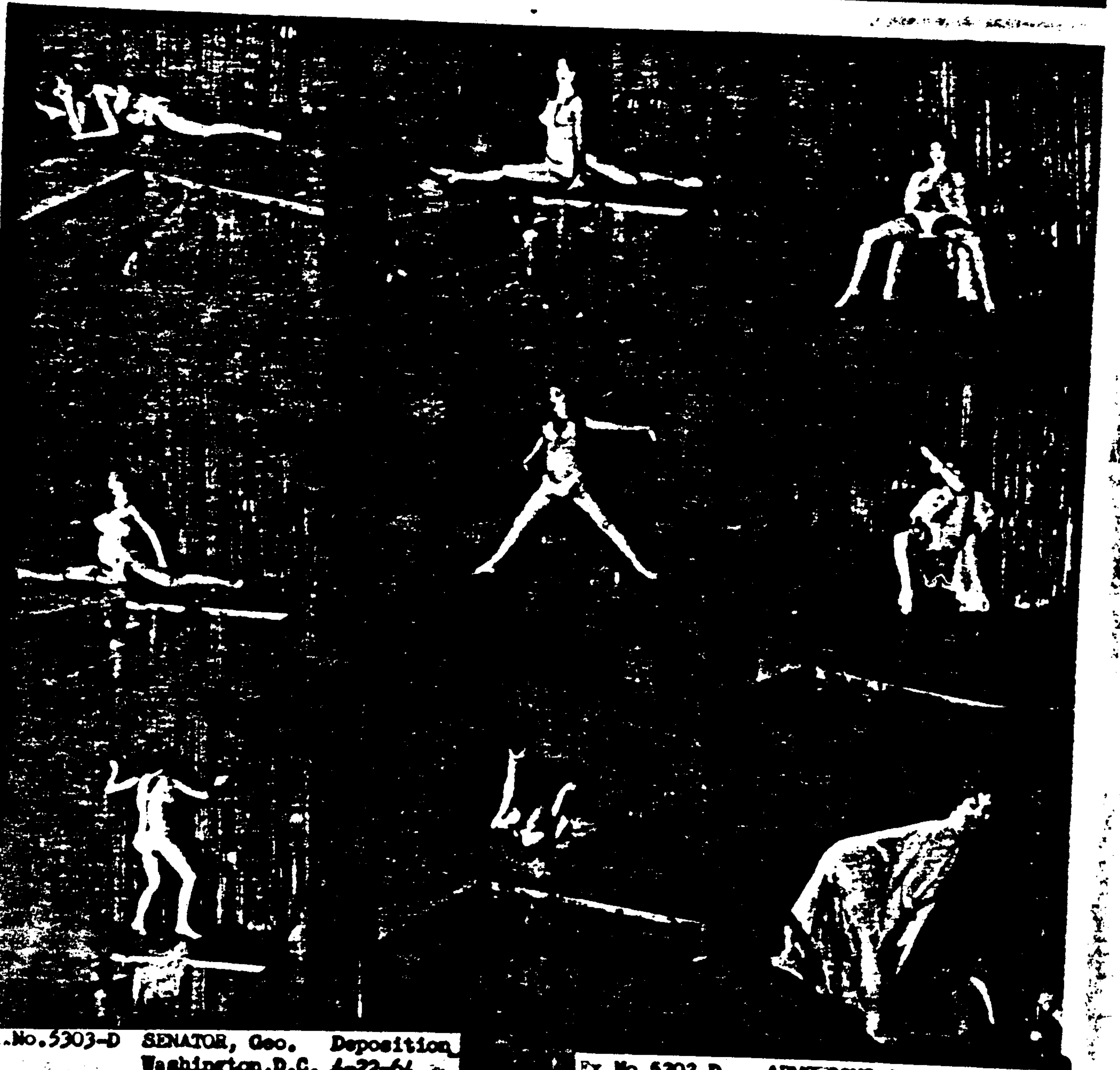




Ex. No. 5303-C SENATOR, Geo. Deposition  
Washington, D.C. 4-22-64

Ex. No. 5304-C SENATOR, A. Deposition  
Dallas 4-22-64





Ex.No.5303-D SENATOR, Geo. Deposition  
Washington, D.C. 4-22-64

Ex.No.5303-D ARMSTRONG, A. Deposition  
Dallas 4-14-64

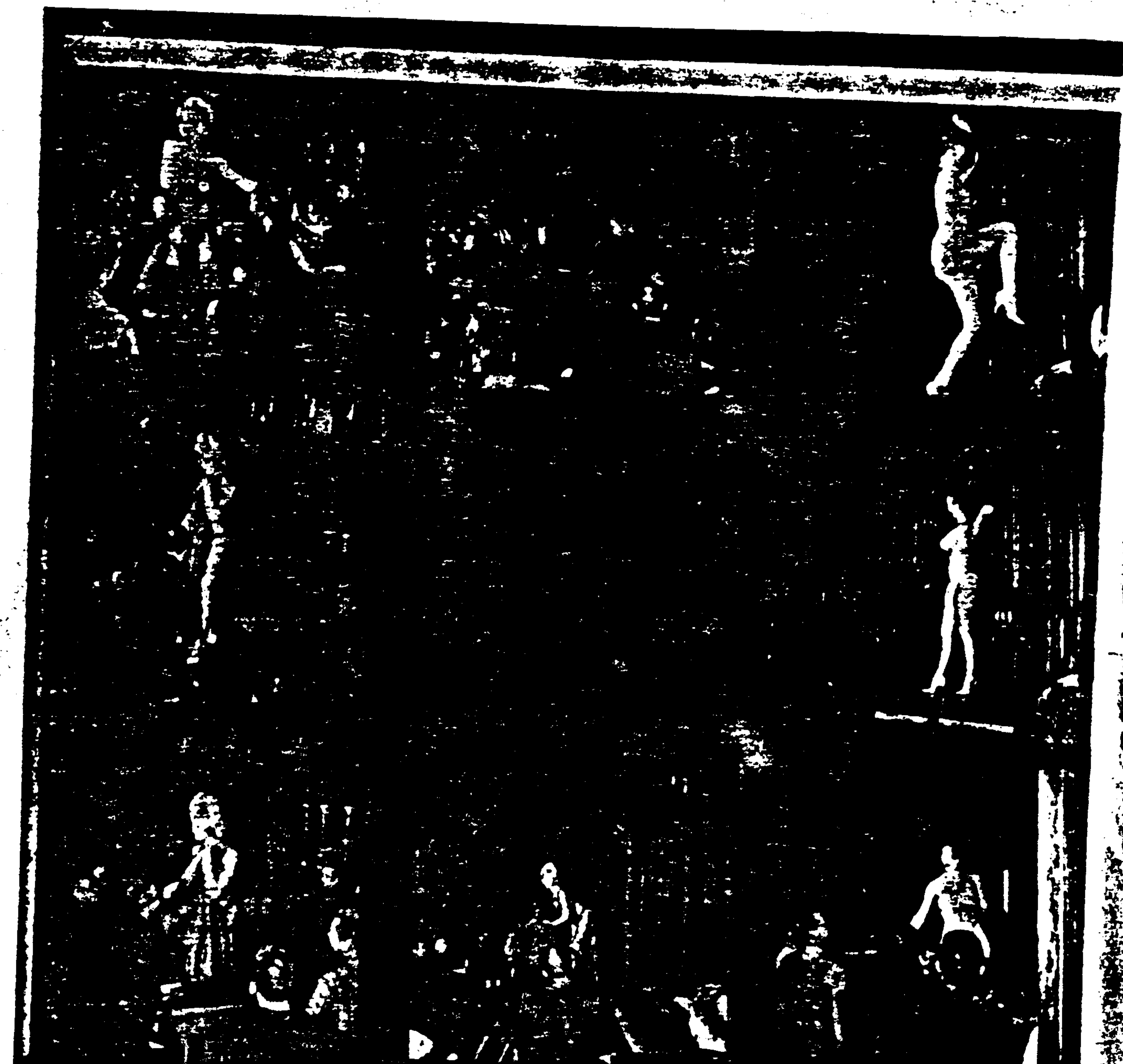




Ex.No.5303-E SENATOR, Geo. Deposition  
Washington, D.C. 4-22-64

Ex.No.5303-E ARMSTRONG, A. Deposition  
Dallas 4-24-64





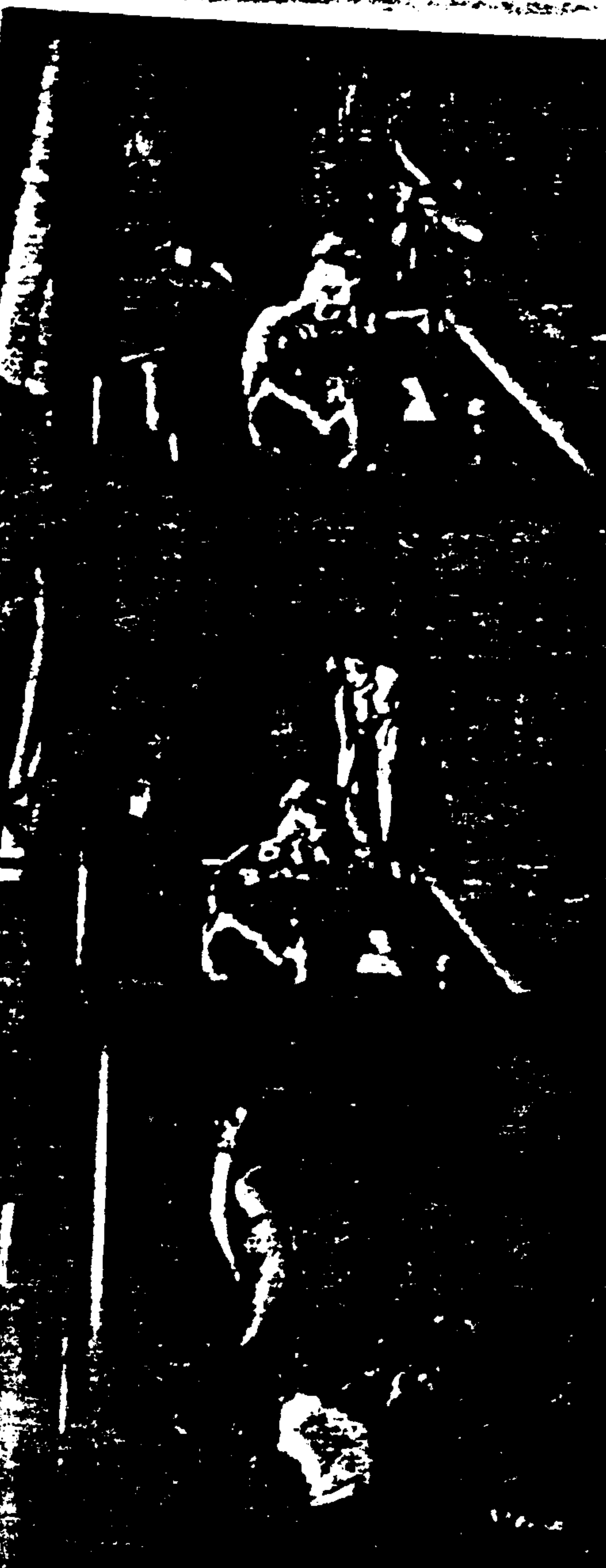
Ex. No. 5303-F - SENAT, C. Deposition  
Washington, D.C. 4-22-64

Ex. No. 5303-F - ARMSTRONG, A. Deposition  
Dallas 4-14-64





Ex. No. 5303-G ARMS... Deposition  
Wash... on, D.C. 4-22-64



Ex. No. 5303-G ARMSTRONG, A. Deposition  
Dallas 4-11-64





Ex.No.5303-H SENATOR,Geo. Deposition  
Washington,D.C. 4-22-64

Ex.No.5303-H ARMSTRONG,A. Deposition  
Dallas 4-14-64





Ex. No. 5303-I SENATOR, Geo. Deposition  
Washington, D.C. 5-22-64

Ex. No. 5303-I ARMSTRONG, A. Deposition  
Dallas 4-14-64



Ex. No. 5303-J SENATOR, Geo. Deposition  
Washington, D.C. 4-22-64

Ex. No. 5303-J ARMSTRONG, A. Deposition  
Dallas 4-14-64





Ex. No. 5303-K - SENATOR Geo. Deposition  
Washington, D.C. 4-22-64

Ex. No. 5303-K - ARMSTRONG A. Deposition  
Dallas 4-14-64



Ex.No.5303-L SENATOR,Geo. Deposition  
Washington,D.C. 4-22-64

Ex.No.5303-A ARMSTRONG,A Deposition  
Dallas 4-14-64



Ex. No. 5303-M SENATOR, Geo. Deposition  
Washington, D.C. 4-2-64

Ex. No. 5303-M ARMSTRONG, A. Deposition  
Dallas 4-14-64



Ex. No. 5304-A SENATOR, Geo. Deposition  
Washington, D.C. 4-27-64

ARMSTRONG, A. Deposition  
Dallas, 4-14-64



Ex.No.5304-B SENATOR, Geo. Deposition  
Washington, D.C. 4-22-64

Ex.No.5304-B ARMSTRONG, A. Deposition  
Dallas, 4-14-64

Ex.No.5305-A - ARMSTRONG,A. Deposition -  
Dallas 4-14-64

Ex.No.5305-A SENATOR,Geo. Deposition -  
Washington,D.C. 4-22-64

Ex.No.5225a - CRAFED,C.L. Deposition -  
Washington,D.C. 4-30-66

Ex.No.5305-B - ARMSTRONG,A. Deposition -  
Dallas 4-14-64

Ex.No.5305-B SENATOR,Geo. Deposition -  
Washington,D.C. 4-22-64

Handwritten notes on a small piece of paper, possibly a notepad or index card, tilted at an angle. The text is written in cursive and includes:

Handwritten notes on a small piece of paper, possibly a notepad or index card, tilted at an angle. The text is written in cursive and includes:

Handwritten notes on a small piece of paper, possibly a notepad or index card, tilted at an angle. The text is written in cursive and includes:

Handwritten notes on a small piece of paper, possibly a notepad or index card, tilted at an angle. The text is written in cursive and includes:

Ex.No.5225b - CRAFARD,C.L. Deposition  
Washington,D.C. 4-10-64







Ex. No. 5305-E

ARMSTRONG, A.  
Dallas

Deposition  
4-14-64

Ex. No. 5305-E

SENATOR, Geo.

Deposition -

Washington, D.C. 4-22-64

*Billy*  
*2 min*  
*Billy*  
*5/1*  
*3*

Ex. No. 5357

PATTERSON, R.C.  
Dallas

Deposition  
4-14-64

Ex. No. 5225e

- CRAFARD, C.L.

Deposition

Washington, D.C. 4-10-64

Ex. No. 5305-F ARMSTRONG, A. Deposition  
Dallas 4-14-64

Ex. No. 5305-F SENATOR, Geo. Deposition  
Washington, D.C. 4-22-64

*[Handwritten notes on a spiral-bound notebook page, tilted at an angle. The text is mostly illegible due to the high contrast and angle, but some words like "Senator" and "Washington" are visible.]*

Ex. No. 5225f - CRAFARD, C.L. Deposition  
Washington, D.C. 4-10-64





Ex.No.5305-I ARMSTRONG,A. Deposition  
Dallas 4-14-64

*J. E. ...*  
*By ...*  
*950.00*  
*300.00*  
*700.00*

704 - PALMER  
FBI - 5946

Ex. No. 5305-I SENATOR, Geo. Deposition  
Washington, D.C. 4-22-64

52251 - CRAFARD, C.L. Deposition  
Washington, D.C. 4-10-64











Ex.No. 5305-N ARMSTRONG, A. Deposition  
Dallas 4-14-64

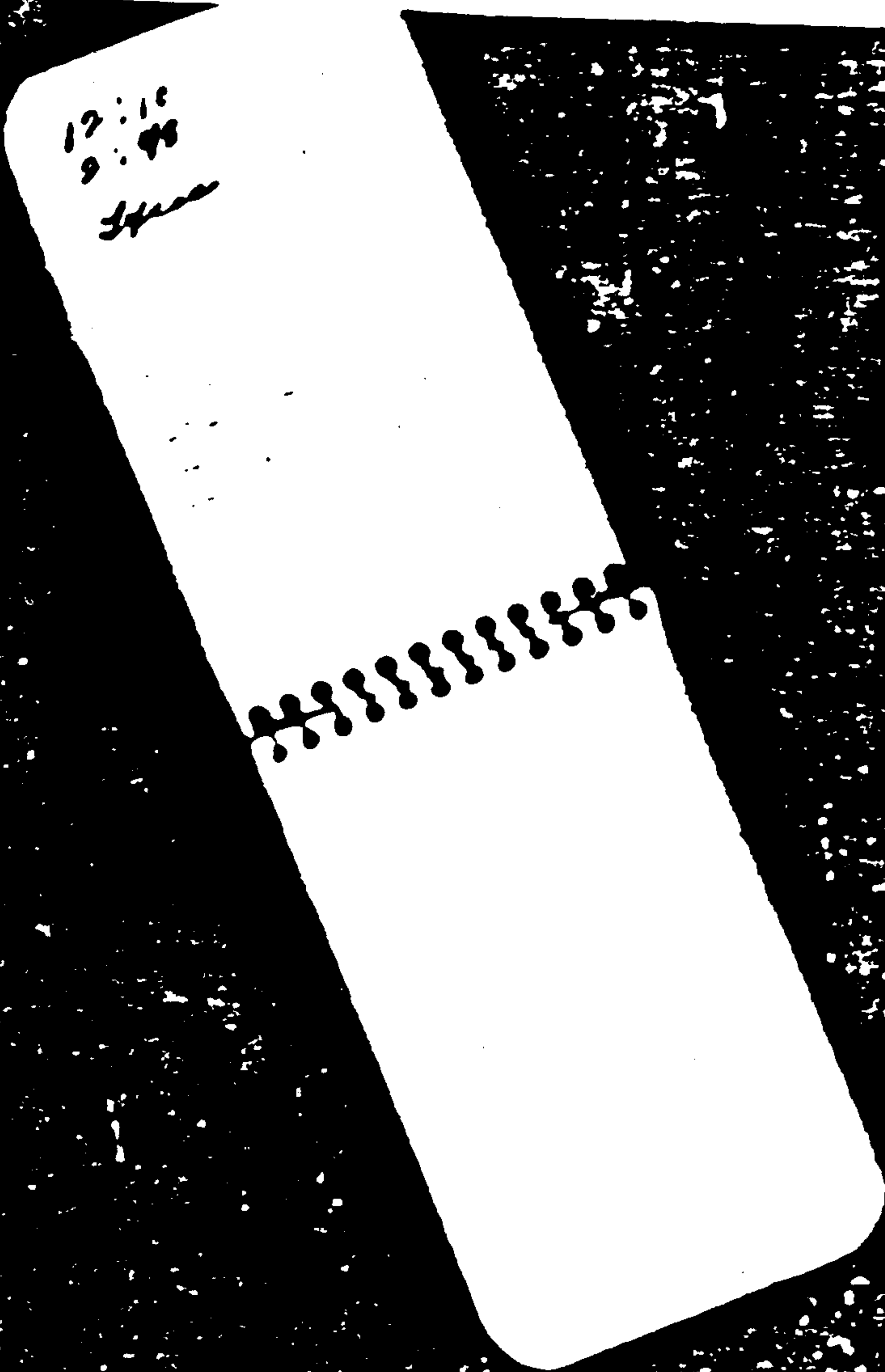
Ex.No. 5305-N SENATOR, Geo. Deposition  
Washington, D.C. 4-22-64

Handwritten notes on a slip of paper, including:  
- 10  
- 11  
- 12  
- 13  
- 14  
- 15  
- 16  
- 17  
- 18  
- 19  
- 20  
- 21  
- 22  
- 23  
- 24  
- 25  
- 26  
- 27  
- 28  
- 29  
- 30  
- 31  
- 32  
- 33  
- 34  
- 35  
- 36  
- 37  
- 38  
- 39  
- 40  
- 41  
- 42  
- 43  
- 44  
- 45  
- 46  
- 47  
- 48  
- 49  
- 50  
- 51  
- 52  
- 53  
- 54  
- 55  
- 56  
- 57  
- 58  
- 59  
- 60  
- 61  
- 62  
- 63  
- 64  
- 65  
- 66  
- 67  
- 68  
- 69  
- 70  
- 71  
- 72  
- 73  
- 74  
- 75  
- 76  
- 77  
- 78  
- 79  
- 80  
- 81  
- 82  
- 83  
- 84  
- 85  
- 86  
- 87  
- 88  
- 89  
- 90  
- 91  
- 92  
- 93  
- 94  
- 95  
- 96  
- 97  
- 98  
- 99  
- 100  
- 101  
- 102  
- 103  
- 104  
- 105  
- 106  
- 107  
- 108  
- 109  
- 110  
- 111  
- 112  
- 113  
- 114  
- 115  
- 116  
- 117  
- 118  
- 119  
- 120  
- 121  
- 122  
- 123  
- 124  
- 125  
- 126  
- 127  
- 128  
- 129  
- 130  
- 131  
- 132  
- 133  
- 134  
- 135  
- 136  
- 137  
- 138  
- 139  
- 140  
- 141  
- 142  
- 143  
- 144  
- 145  
- 146  
- 147  
- 148  
- 149  
- 150  
- 151  
- 152  
- 153  
- 154  
- 155  
- 156  
- 157  
- 158  
- 159  
- 160  
- 161  
- 162  
- 163  
- 164  
- 165  
- 166  
- 167  
- 168  
- 169  
- 170  
- 171  
- 172  
- 173  
- 174  
- 175  
- 176  
- 177  
- 178  
- 179  
- 180  
- 181  
- 182  
- 183  
- 184  
- 185  
- 186  
- 187  
- 188  
- 189  
- 190  
- 191  
- 192  
- 193  
- 194  
- 195  
- 196  
- 197  
- 198  
- 199  
- 200  
- 201  
- 202  
- 203  
- 204  
- 205  
- 206  
- 207  
- 208  
- 209  
- 210  
- 211  
- 212  
- 213  
- 214  
- 215  
- 216  
- 217  
- 218  
- 219  
- 220  
- 221  
- 222  
- 223  
- 224  
- 225  
- 226  
- 227  
- 228  
- 229  
- 230  
- 231  
- 232  
- 233  
- 234  
- 235  
- 236  
- 237  
- 238  
- 239  
- 240  
- 241  
- 242  
- 243  
- 244  
- 245  
- 246  
- 247  
- 248  
- 249  
- 250  
- 251  
- 252  
- 253  
- 254  
- 255  
- 256  
- 257  
- 258  
- 259  
- 260  
- 261  
- 262  
- 263  
- 264  
- 265  
- 266  
- 267  
- 268  
- 269  
- 270  
- 271  
- 272  
- 273  
- 274  
- 275  
- 276  
- 277  
- 278  
- 279  
- 280  
- 281  
- 282  
- 283  
- 284  
- 285  
- 286  
- 287  
- 288  
- 289  
- 290  
- 291  
- 292  
- 293  
- 294  
- 295  
- 296  
- 297  
- 298  
- 299  
- 300  
- 301  
- 302  
- 303  
- 304  
- 305  
- 306  
- 307  
- 308  
- 309  
- 310  
- 311  
- 312  
- 313  
- 314  
- 315  
- 316  
- 317  
- 318  
- 319  
- 320  
- 321  
- 322  
- 323  
- 324  
- 325  
- 326  
- 327  
- 328  
- 329  
- 330  
- 331  
- 332  
- 333  
- 334  
- 335  
- 336  
- 337  
- 338  
- 339  
- 340  
- 341  
- 342  
- 343  
- 344  
- 345  
- 346  
- 347  
- 348  
- 349  
- 350  
- 351  
- 352  
- 353  
- 354  
- 355  
- 356  
- 357  
- 358  
- 359  
- 360  
- 361  
- 362  
- 363  
- 364  
- 365  
- 366  
- 367  
- 368  
- 369  
- 370  
- 371  
- 372  
- 373  
- 374  
- 375  
- 376  
- 377  
- 378  
- 379  
- 380  
- 381  
- 382  
- 383  
- 384  
- 385  
- 386  
- 387  
- 388  
- 389  
- 390  
- 391  
- 392  
- 393  
- 394  
- 395  
- 396  
- 397  
- 398  
- 399  
- 400  
- 401  
- 402  
- 403  
- 404  
- 405  
- 406  
- 407  
- 408  
- 409  
- 410  
- 411  
- 412  
- 413  
- 414  
- 415  
- 416  
- 417  
- 418  
- 419  
- 420  
- 421  
- 422  
- 423  
- 424  
- 425  
- 426  
- 427  
- 428  
- 429  
- 430  
- 431  
- 432  
- 433  
- 434  
- 435  
- 436  
- 437  
- 438  
- 439  
- 440  
- 441  
- 442  
- 443  
- 444  
- 445  
- 446  
- 447  
- 448  
- 449  
- 450  
- 451  
- 452  
- 453  
- 454  
- 455  
- 456  
- 457  
- 458  
- 459  
- 460  
- 461  
- 462  
- 463  
- 464  
- 465  
- 466  
- 467  
- 468  
- 469  
- 470  
- 471  
- 472  
- 473  
- 474  
- 475  
- 476  
- 477  
- 478  
- 479  
- 480  
- 481  
- 482  
- 483  
- 484  
- 485  
- 486  
- 487  
- 488  
- 489  
- 490  
- 491  
- 492  
- 493  
- 494  
- 495  
- 496  
- 497  
- 498  
- 499  
- 500  
- 501  
- 502  
- 503  
- 504  
- 505  
- 506  
- 507  
- 508  
- 509  
- 510  
- 511  
- 512  
- 513  
- 514  
- 515  
- 516  
- 517  
- 518  
- 519  
- 520  
- 521  
- 522  
- 523  
- 524  
- 525  
- 526  
- 527  
- 528  
- 529  
- 530  
- 531  
- 532  
- 533  
- 534  
- 535  
- 536  
- 537  
- 538  
- 539  
- 540  
- 541  
- 542  
- 543  
- 544  
- 545  
- 546  
- 547  
- 548  
- 549  
- 550  
- 551  
- 552  
- 553  
- 554  
- 555  
- 556  
- 557  
- 558  
- 559  
- 560  
- 561  
- 562  
- 563  
- 564  
- 565  
- 566  
- 567  
- 568  
- 569  
- 570  
- 571  
- 572  
- 573  
- 574  
- 575  
- 576  
- 577  
- 578  
- 579  
- 580  
- 581  
- 582  
- 583  
- 584  
- 585  
- 586  
- 587  
- 588  
- 589  
- 590  
- 591  
- 592  
- 593  
- 594  
- 595  
- 596  
- 597  
- 598  
- 599  
- 600  
- 601  
- 602  
- 603  
- 604  
- 605  
- 606  
- 607  
- 608  
- 609  
- 610  
- 611  
- 612  
- 613  
- 614  
- 615  
- 616  
- 617  
- 618  
- 619  
- 620  
- 621  
- 622  
- 623  
- 624  
- 625  
- 626  
- 627  
- 628  
- 629  
- 630  
- 631  
- 632  
- 633  
- 634  
- 635  
- 636  
- 637  
- 638  
- 639  
- 640  
- 641  
- 642  
- 643  
- 644  
- 645  
- 646  
- 647  
- 648  
- 649  
- 650  
- 651  
- 652  
- 653  
- 654  
- 655  
- 656  
- 657  
- 658  
- 659  
- 660  
- 661  
- 662  
- 663  
- 664  
- 665  
- 666  
- 667  
- 668  
- 669  
- 670  
- 671  
- 672  
- 673  
- 674  
- 675  
- 676  
- 677  
- 678  
- 679  
- 680  
- 681  
- 682  
- 683  
- 684  
- 685  
- 686  
- 687  
- 688  
- 689  
- 690  
- 691  
- 692  
- 693  
- 694  
- 695  
- 696  
- 697  
- 698  
- 699  
- 700  
- 701  
- 702  
- 703  
- 704  
- 705  
- 706  
- 707  
- 708  
- 709  
- 710  
- 711  
- 712  
- 713  
- 714  
- 715  
- 716  
- 717  
- 718  
- 719  
- 720  
- 721  
- 722  
- 723  
- 724  
- 725  
- 726  
- 727  
- 728  
- 729  
- 730  
- 731  
- 732  
- 733  
- 734  
- 735  
- 736  
- 737  
- 738  
- 739  
- 740  
- 741  
- 742  
- 743  
- 744  
- 745  
- 746  
- 747  
- 748  
- 749  
- 750  
- 751  
- 752  
- 753  
- 754  
- 755  
- 756  
- 757  
- 758  
- 759  
- 760  
- 761  
- 762  
- 763  
- 764  
- 765  
- 766  
- 767  
- 768  
- 769  
- 770  
- 771  
- 772  
- 773  
- 774  
- 775  
- 776  
- 777  
- 778  
- 779  
- 780  
- 781  
- 782  
- 783  
- 784  
- 785  
- 786  
- 787  
- 788  
- 789  
- 790  
- 791  
- 792  
- 793  
- 794  
- 795  
- 796  
- 797  
- 798  
- 799  
- 800  
- 801  
- 802  
- 803  
- 804  
- 805  
- 806  
- 807  
- 808  
- 809  
- 810  
- 811  
- 812  
- 813  
- 814  
- 815  
- 816  
- 817  
- 818  
- 819  
- 820  
- 821  
- 822  
- 823  
- 824  
- 825  
- 826  
- 827  
- 828  
- 829  
- 830  
- 831  
- 832  
- 833  
- 834  
- 835  
- 836  
- 837  
- 838  
- 839  
- 840  
- 841  
- 842  
- 843  
- 844  
- 845  
- 846  
- 847  
- 848  
- 849  
- 850  
- 851  
- 852  
- 853  
- 854  
- 855  
- 856  
- 857  
- 858  
- 859  
- 860  
- 861  
- 862  
- 863  
- 864  
- 865  
- 866  
- 867  
- 868  
- 869  
- 870  
- 871  
- 872  
- 873  
- 874  
- 875  
- 876  
- 877  
- 878  
- 879  
- 880  
- 881  
- 882  
- 883  
- 884  
- 885  
- 886  
- 887  
- 888  
- 889  
- 890  
- 891  
- 892  
- 893  
- 894  
- 895  
- 896  
- 897  
- 898  
- 899  
- 900  
- 901  
- 902  
- 903  
- 904  
- 905  
- 906  
- 907  
- 908  
- 909  
- 910  
- 911  
- 912  
- 913  
- 914  
- 915  
- 916  
- 917  
- 918  
- 919  
- 920  
- 921  
- 922  
- 923  
- 924  
- 925  
- 926  
- 927  
- 928  
- 929  
- 930  
- 931  
- 932  
- 933  
- 934  
- 935  
- 936  
- 937  
- 938  
- 939  
- 940  
- 941  
- 942  
- 943  
- 944  
- 945  
- 946  
- 947  
- 948  
- 949  
- 950  
- 951  
- 952  
- 953  
- 954  
- 955  
- 956  
- 957  
- 958  
- 959  
- 960  
- 961  
- 962  
- 963  
- 964  
- 965  
- 966  
- 967  
- 968  
- 969  
- 970  
- 971  
- 972  
- 973  
- 974  
- 975  
- 976  
- 977  
- 978  
- 979  
- 980  
- 981  
- 982  
- 983  
- 984  
- 985  
- 986  
- 987  
- 988  
- 989  
- 990  
- 991  
- 992  
- 993  
- 994  
- 995  
- 996  
- 997  
- 998  
- 999  
- 1000

Ex.No. 5225n - CRAFARD, C.L. Deposition  
Washington, D.C. 4-10-64

Ex.No.5305-0 ARMSTRONG,A. Deposition  
Dallas 4-14-64

Ex.No.5305-0 SENATOR,Geo. Deposition  
Washington,D.C. 4-22-64



Ex.No.5225-0 - CRAFARD,C.L. Deposition  
Washington,D.C. 4-10-64



Ex.No.5305-Q ARMSTRONG,A. Deposition  
Dallas 4-14-64

Ex.No.5305-Q SENATOR,Geo. Deposition  
Washington,D.C. 4-22-64

*[Handwritten notes on a spiral-bound notepad, tilted at an angle. The text is mostly illegible due to the angle and high contrast, but some words like 'Dallas' and 'Washington' are visible.]*

Ex.No.5225q - CRAFTARD,C.L. Deposition  
Washington,D.C. 4-10-64

-Ex.No.5305-R ARMSTRONG,A. Deposition  
Dallas 4-14-64

Ex.No.5305-R SENATOR,Geo. Deposition  
Washington,D.C. 4-22-64

*[Handwritten notes on a lined notepad:]*  
BILL PATTY  
FL 7-4-63  
Bill Postell  
99 University Pl  
NY 2 NY  
4-4-64  
GADIS 445-2871  
N.B. N. 2110  
MR. OSCAR REWMAN  
CLIVER-CR 926W  
12-72 ST. TR JBT  
DR UNLEVITCH  
TAS-5191

Ex.No.5225r - CRAFARD,C.L. Deposition  
Washington,D.C. 4-10-64

Ex.No. 5305-S ARMSTRONG, A. Deposition  
Dallas 4-14-64

Ex.No. 5305-S SENATOR, Geo. Deposition  
Washington, D.C. 4-22-64



LITRE L...  
IE 40125

Ex.No. 5225B - CRAFARD, C.L. Deposition



Ex. No. 5306-A ARMSTRONG, A. Deposition  
Dallas 4-14-64

Ex. No. 5306-A SENATOR, Geo. Deposition  
Washington, D.C. 4-22-64

4-14-64  
C. P. ...  
4-14-64  
J. E. ...  
on ...

4-14-64  
C. P. ...  
4-14-64  
J. E. ...  
on ...

4-14-64  
C. P. ...  
4-14-64  
J. E. ...  
on ...

Ex. No. 5224b - CRAFT, C.L. Deposition  
Washington, D.C. 4-10-64

Ex. No. 5306-B ARMSTRONG, A. Deposition -  
Dallas 4-14-64

Ex. No. 5306-B SENATOR Geo. Deposition -  
Washington, D.C. 4-22-64

Handwritten notes on a grid, including the name "S. H. ...".

Handwritten notes on a grid, including the name "S. H. ...".

Handwritten notes on a grid, including the name "S. H. ...".

Ex. No. 5224a - CRAFARD, C. L. Deposition -  
Washington, D. C. 4-10-64

Ex. No. 5307-A ARMSTRONG, A. Deposition  
Dallas 4-14-64

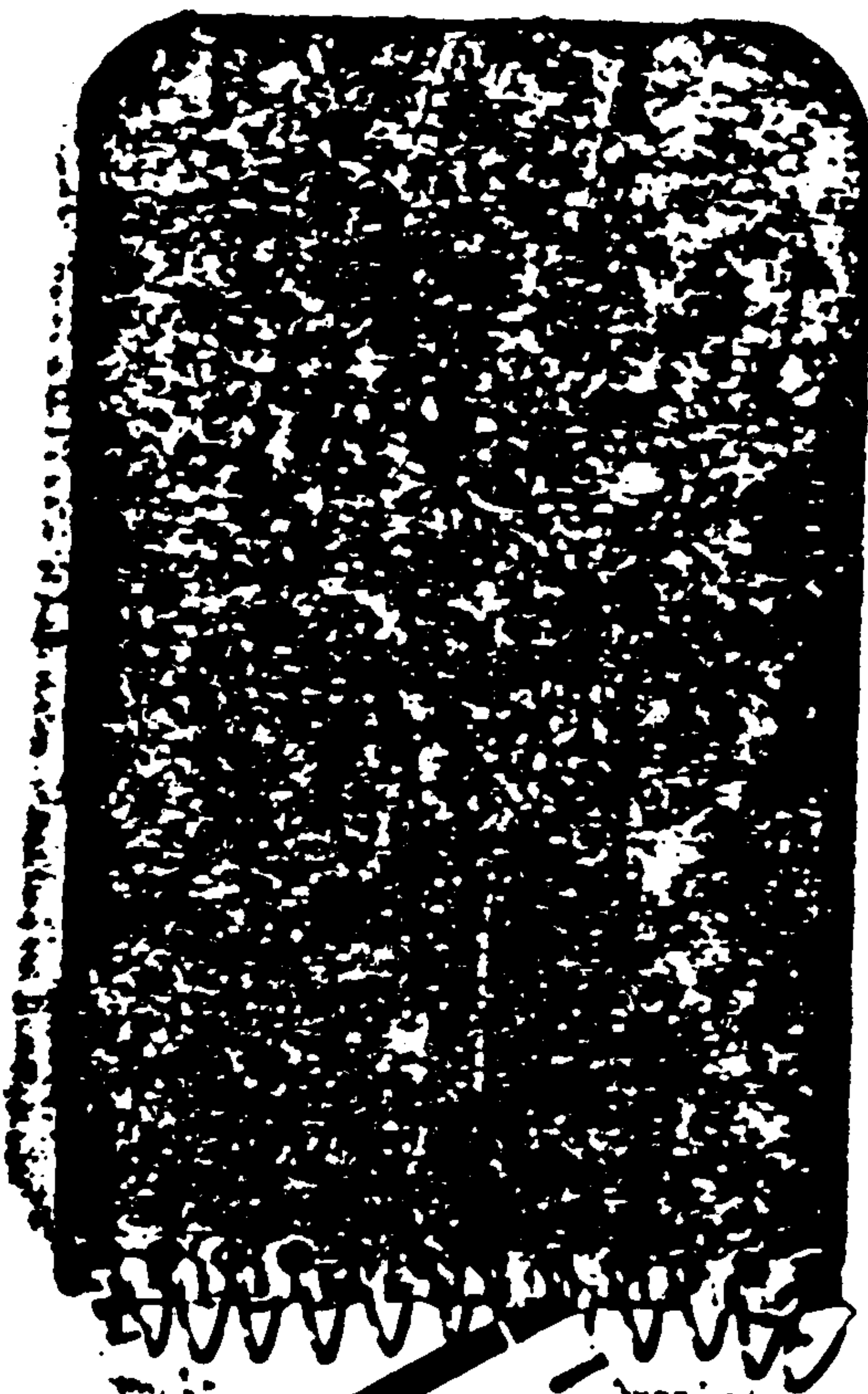
Ex. No. 5307-A SENATOR, Geo. Deposition  
Washington, D.C. 4-22-64

TE SMITH  
1046  
TEX

Ex. No. 5223 - CRAFARD, C.L. Deposition  
Washington, D.C. 4-10-64

FBI  
LABORATORY

Product of  
your case



Armstrong Exhibit 5308

Q-54

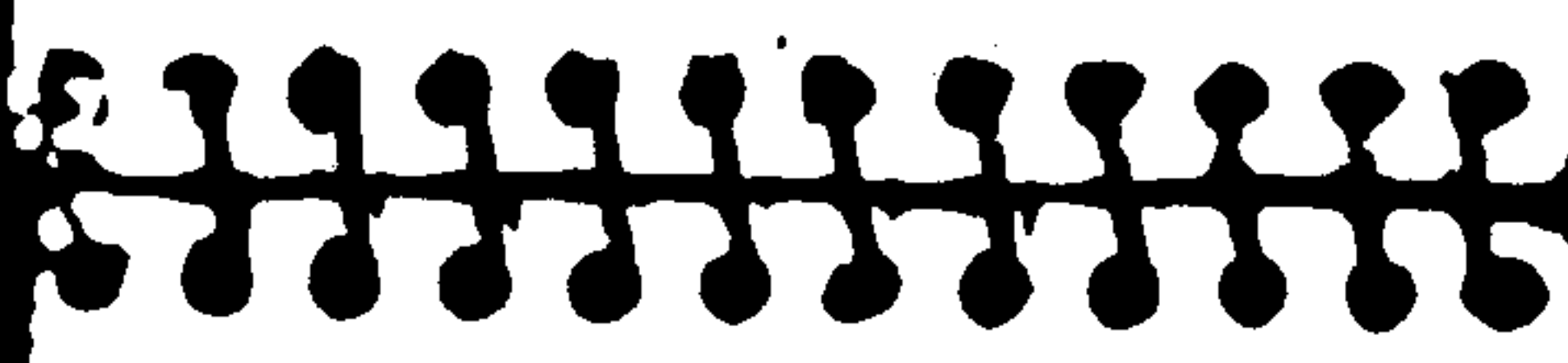






8-54

Home 15 min  
 CAH-2234  
 Mr. Jones  
 1000 Broadway  
 Con. Los Angeles 2576  
 Con. Los Angeles  
 (800) 363247  
 (800) 363247  
 (800) 363247  
 (800) 363247  
 (800) 363247  
 (800) 363247



Study Reference  
 HI 9-9581

Med. Fee bill at  
 Union Co.

G. H. G. Kabela

G. H. G. Kabela

Cal. 3-3347  
 reference on study

14.20  
 15.50

American Radio 5308





ASTORIA BLDG 5308

Handwritten notes on a spiral-bound notepad, including dates like "AT 1-0345" and "AT 2-0720", and names like "Polly Head".

D-435849 '073 AX



Handwritten notes on a lined notepad, including the number 1A92533 and the phrase "I am 3rd grade like".

Handwritten text on a diagonal strip, possibly a name or title.



Handwritten number 'D-54' in the bottom right corner.