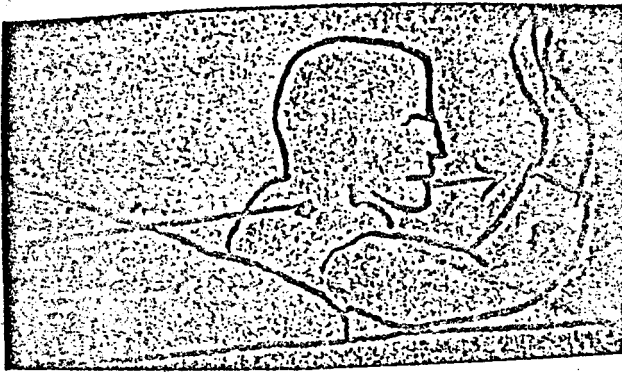
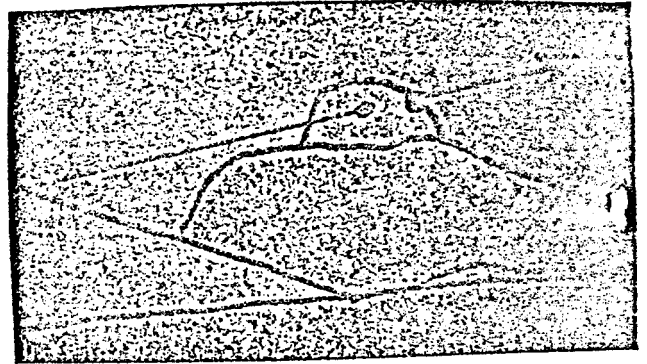


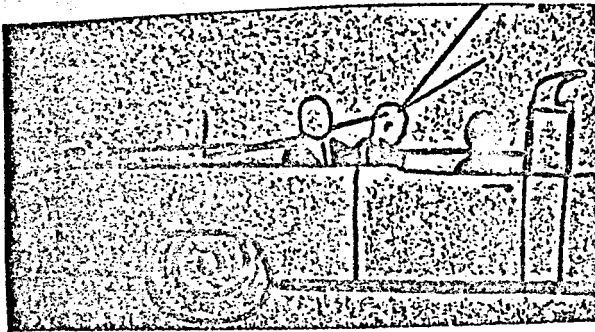
President Kennedy's limousine, SS100X was sabotaged prior to his assassination so that a weapon could be triggered that would shoot him in the head. He would be a relatively stationary target--the President always sat in the same place.



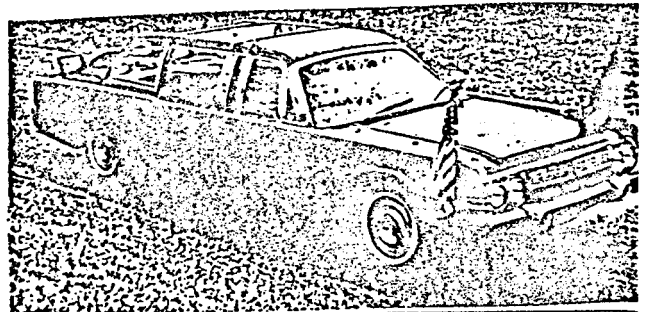
In reality as the device was triggered the 1st shot pierced his throat ..



...and as JFK fell forward a 2nd shot, following the same trajectory shattered the top of his head.

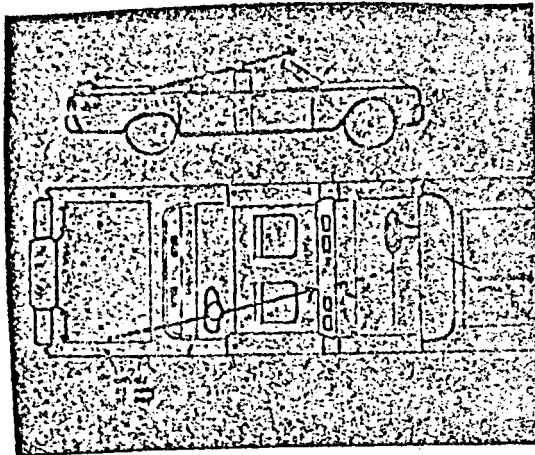
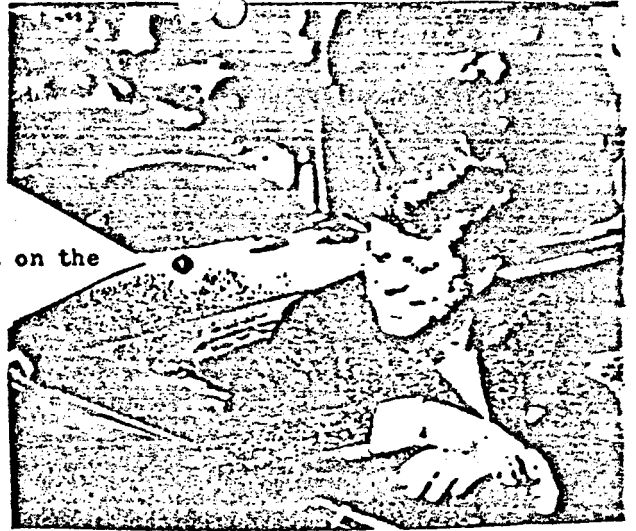


These shots in sequence follow the same upward angle.

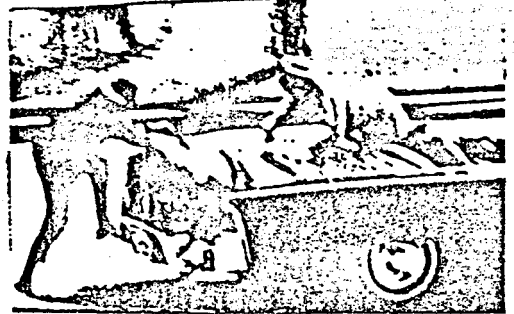


After the assassination, the car was completely remodelled, thereby obliterating any evidence

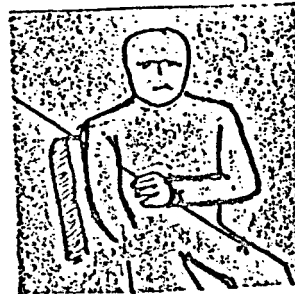
Located directly behind the President on the trunk lid are short wave aerials.



The trajectories indicate that the source of the shots originates in the vicinity of one of the aerials.



This would explain why Mrs. Kennedy climbed out on the trunk after the last shot, "apparently looking for something."



Governor Connally's wounds can be explained in a similar manner. He sat on a jump-seat directly in front of President Kennedy. His wounds go from his right armpit to his left thigh. The wound near his armpit is sufficiently low enough to have been blocked by the seat back of his jump seat--or caused by it. The day before the assassination, that jump seat was mysteriously unoccupied. Could it have been tampered with?



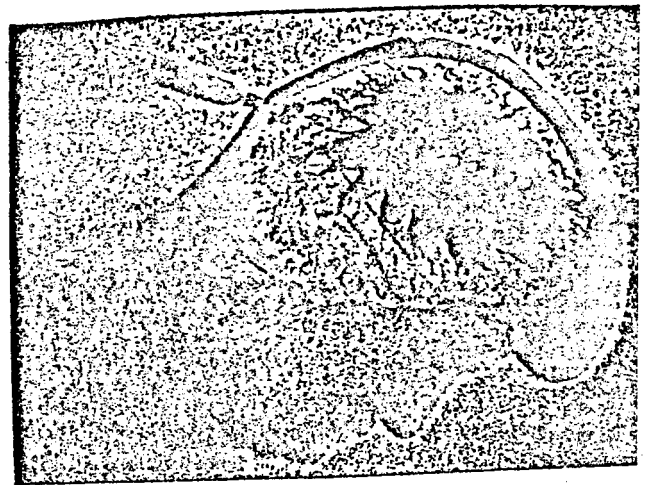
As depicted in the Warren Report the neck wound is a shallow down angle—yet the stand-in for the reenactment, wearing JFK's jacket, shows that the bullet followed an upward trajectory.



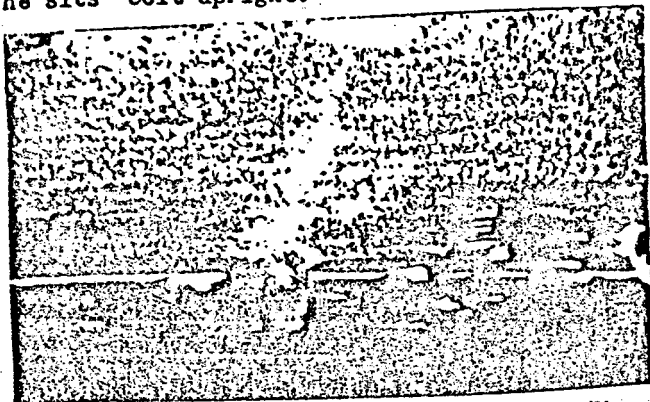
From the white chalk mark to the throat is an upward path. The dotted line indicates the bullet path theorized by the Warren Commission.



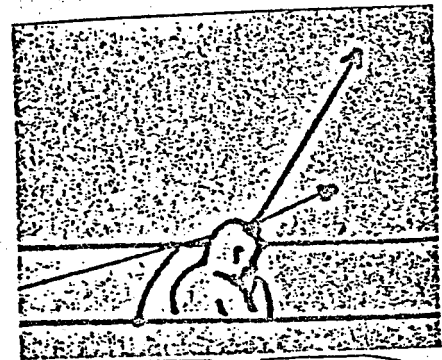
From the Zapruder film we see JFK reacting to the 1st shot. His arms jerk upward and he sits "bolt upright."



The diagram of the head wound shows JFK be too far forward...



...when in reality his head was just slightly



Using the trajectory from the Warren Commission's diagram, we get the true path of the missile.