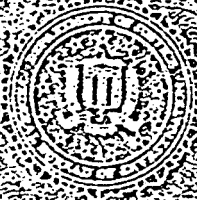


This binding book belongs in
62-109060-EBF-2654X

THE ASSASSINATION OF PRESIDENT JOHN F. KENNEDY

NOVEMBER 27, 1963



Patte and Randle Homes

Irving, Texas

PHOTOGRAPHS
FLOOR PLANS
STREET DIAGRAM
ROUTE MAP

FEDERAL BUREAU OF INVESTIGATION
UNITED STATES DEPARTMENT OF JUSTICE
JAMES EARL HOOPER, Director

62-109060-2654X

TABLE OF CONTENTS

A. PAINE HOME - PLAT AND FLOOR PLAN

1. FRONT VIEW
2. REAR VIEW
3. EAST SIDE
4. WEST SIDE
5. VIEW FROM KITCHEN TO GARAGE
6. DOOR TO BACK YARD
7. KITCHEN AREA
8. GARAGE INTERIOR

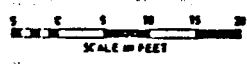
B. RANDLE HOME - PLAT AND FLOOR PLAN

9. CORNER VIEW
10. MRS. RANDLE AT KITCHEN WINDOW
11. FIELD OF VIEW FROM KITCHEN WINDOW
12. MRS. RANDLE LOOKING INTO CARPORT
13. INSIDE OF CARPORT
14. WEST SIDE OF HOUSE, LOCATION OF FRAZIER'S CAR
15. VIEW OF PAINE AND RANDLE HOMES, LOOKING NORTHEAST
16. VIEW OF RANDLE HOME, LOOKING EAST
17. VIEW LOOKING WEST TO PAINE HOME
18. VIEW FROM RANDLE KITCHEN WINDOW

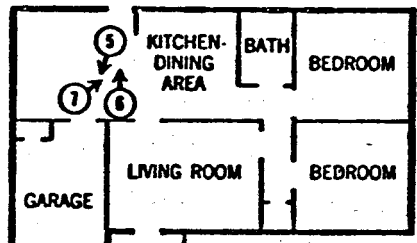
C. STREET MAP - RELATIVE POSITIONS OF PAINE AND RANDLE HOMES, IRVING, TEXAS

D. MAP - FRAZIER'S ROUTE FROM RANDLE HOME TO TEXAS SCHOOL BOOK DEPOSITORY BUILDING, NOVEMBER 22, 1963

A



CONC. DRAINAGE DITCH



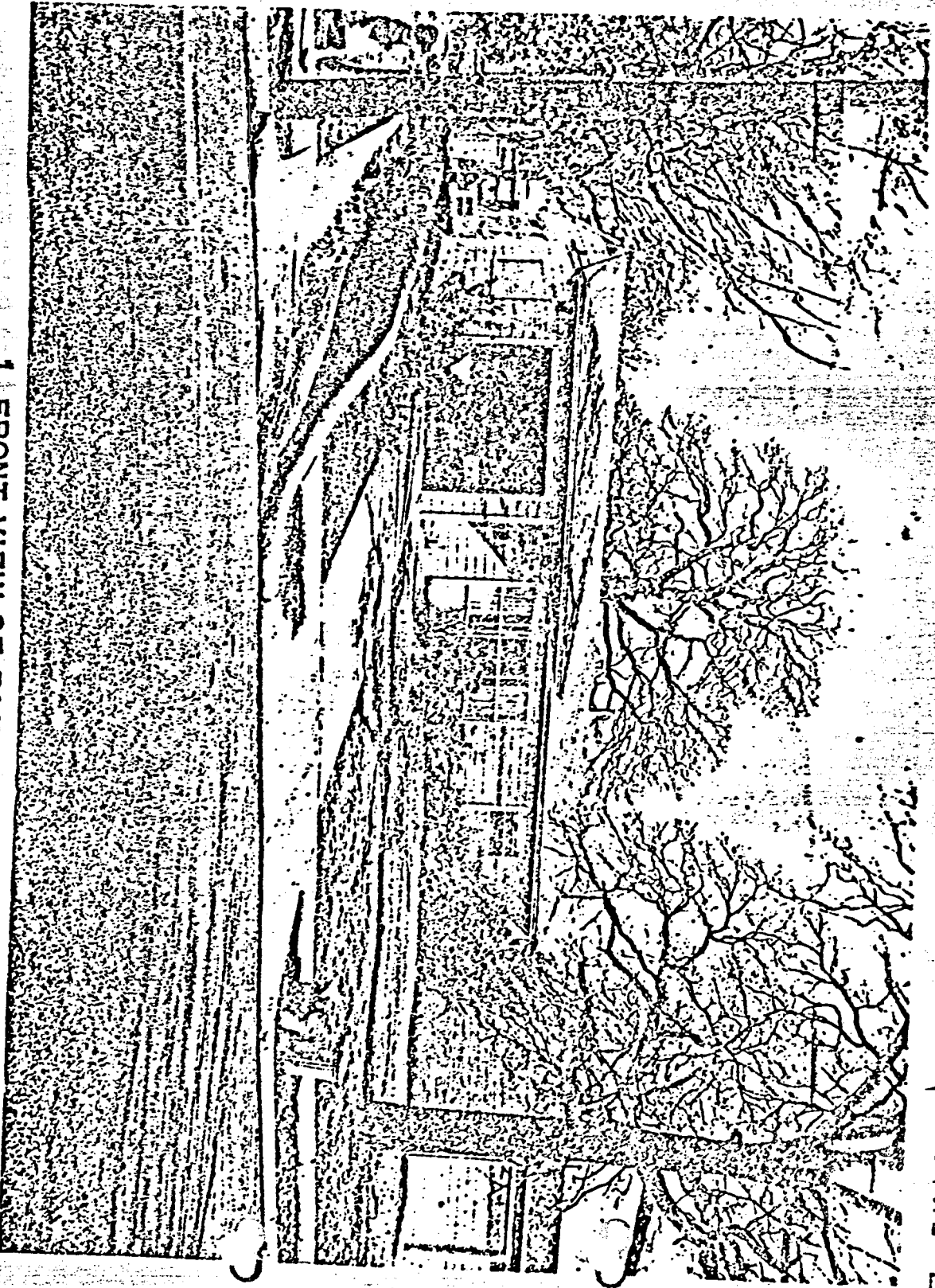
**PAINE HOME
2515 W. FIFTH ST.
IRVING, TEXAS**

CONC. WALK

W. FIFTH STREET



1. FRONT VIEW OF PAINE HOME.



Route Map Street Diagram Paines Home



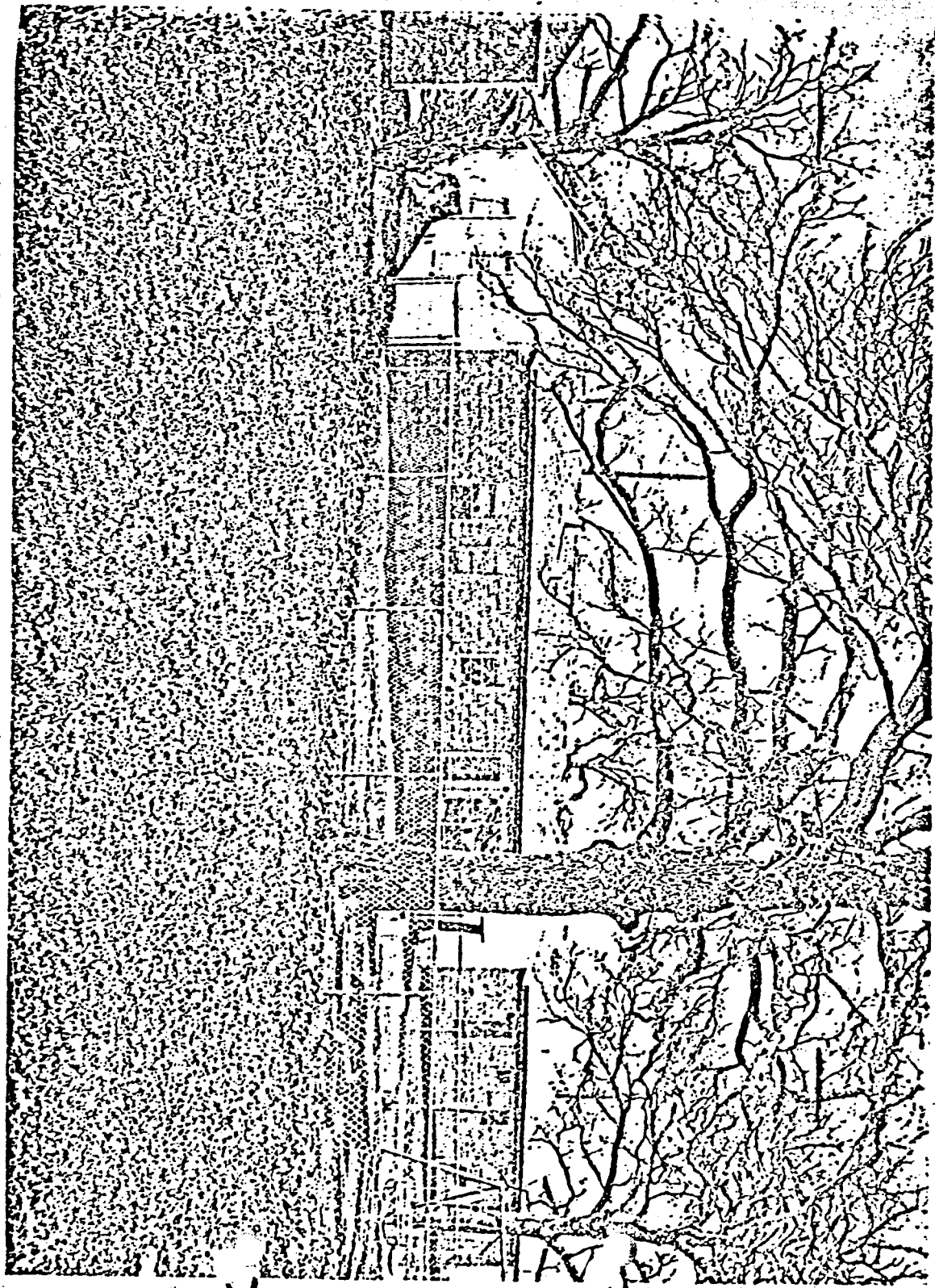
2. REAR VIEW OF PAINE HOME.

Route Map

Street Diagram

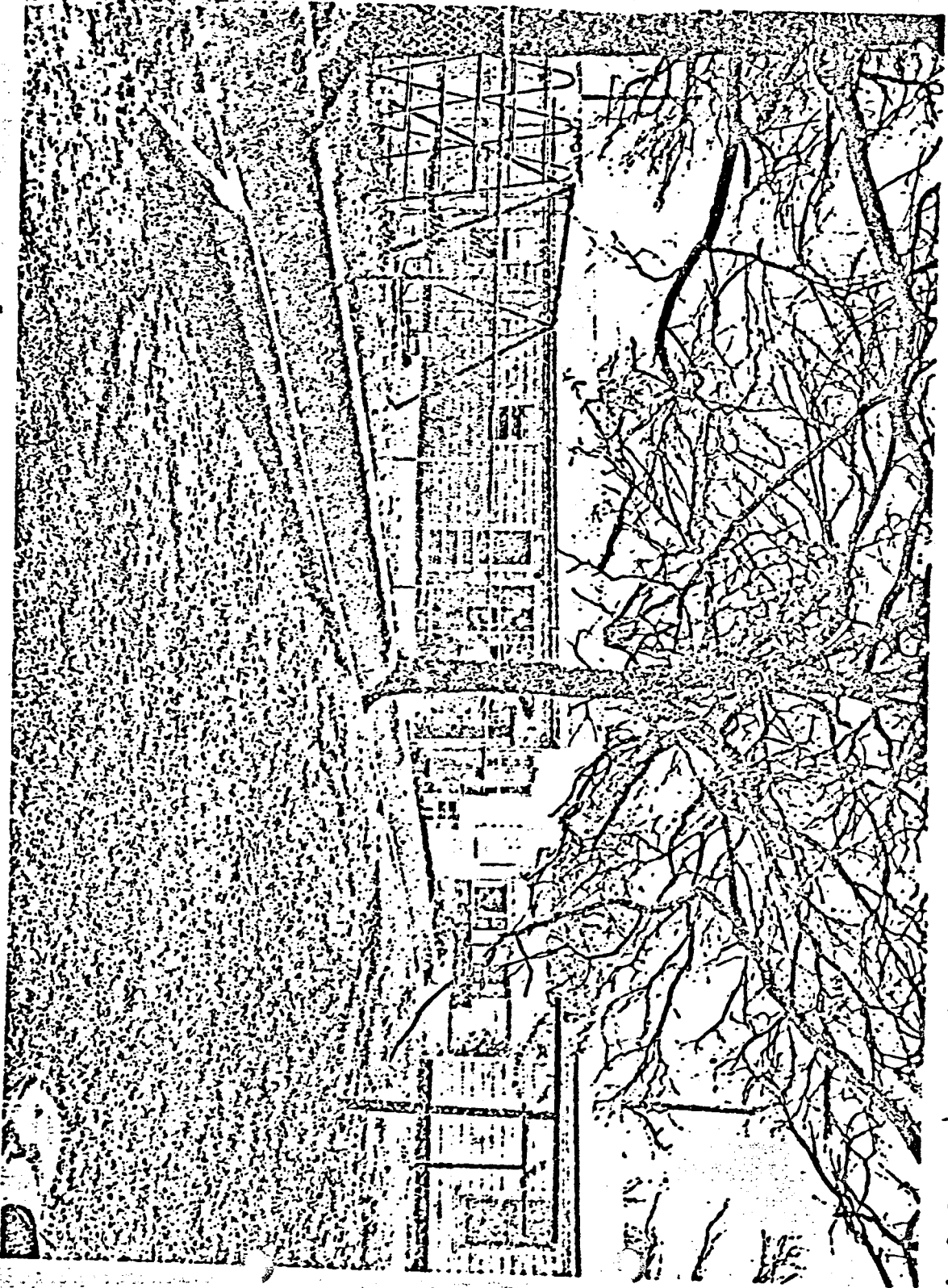
Randle Home

3. VIEW OF EAST SIDE OF PAINE HOME.



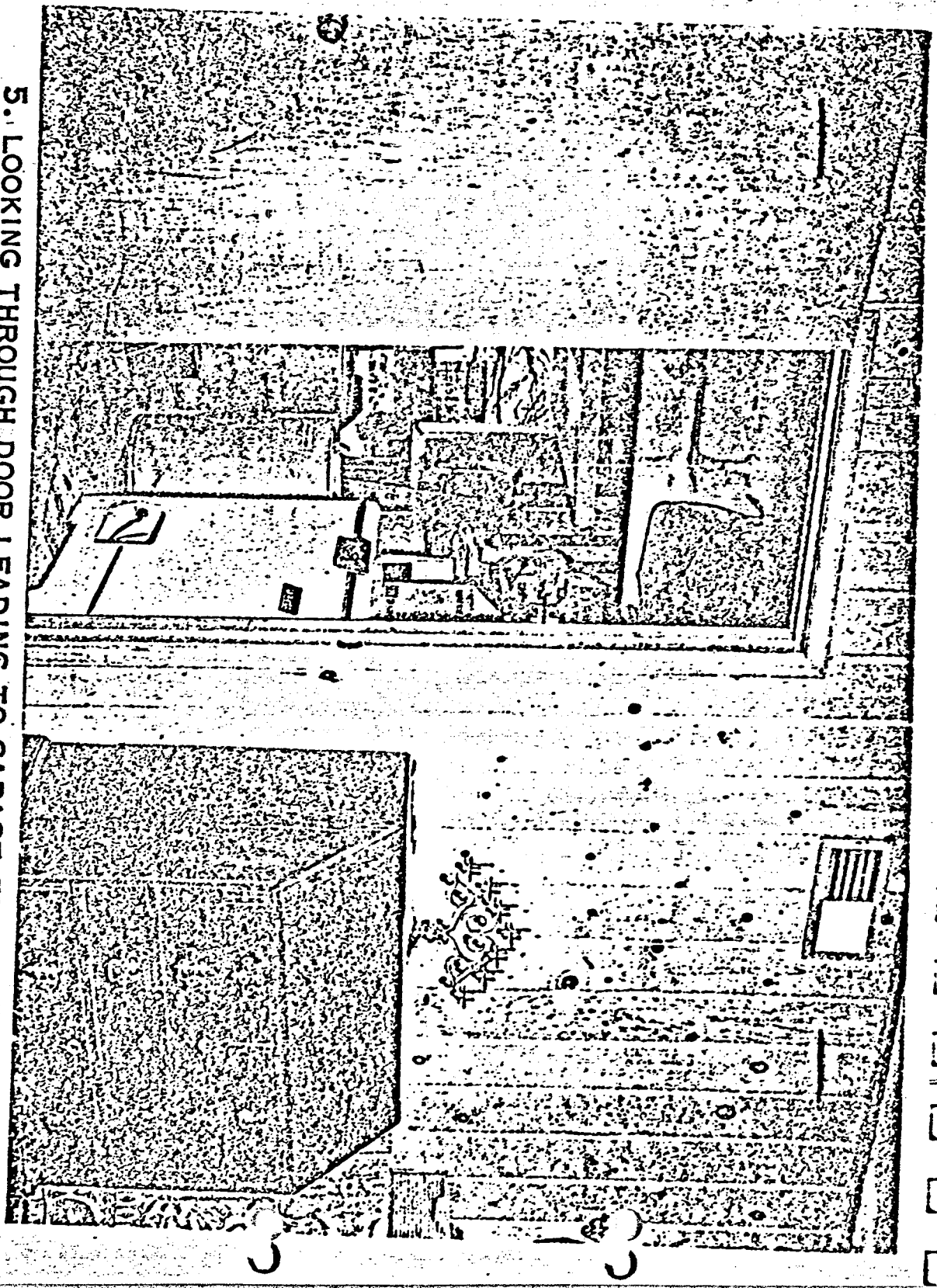
Route Map Street Diagram Randle Home

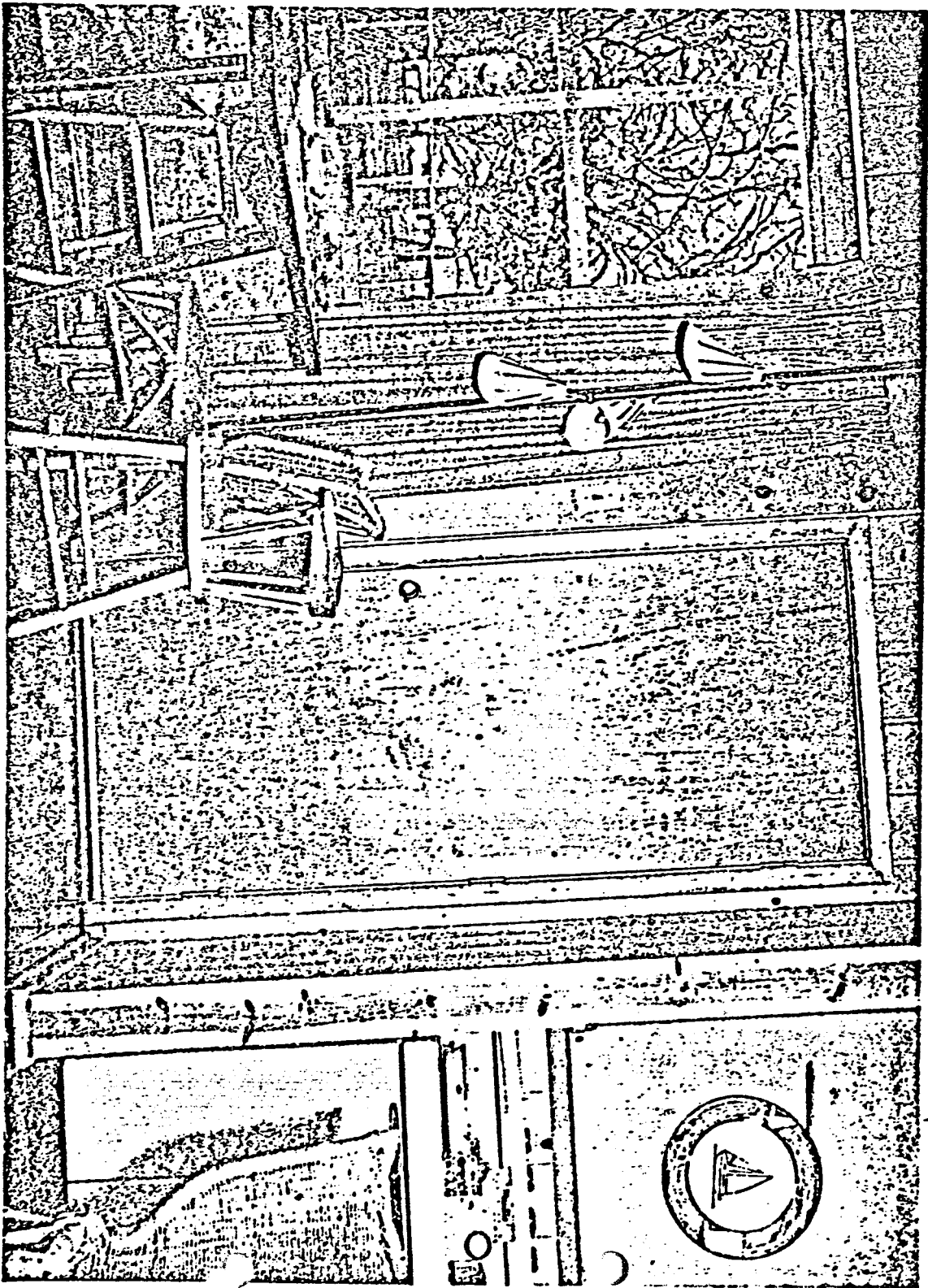
4. VIEW OF WEST SIDE OF PAINE HOME.



PAINE HOME

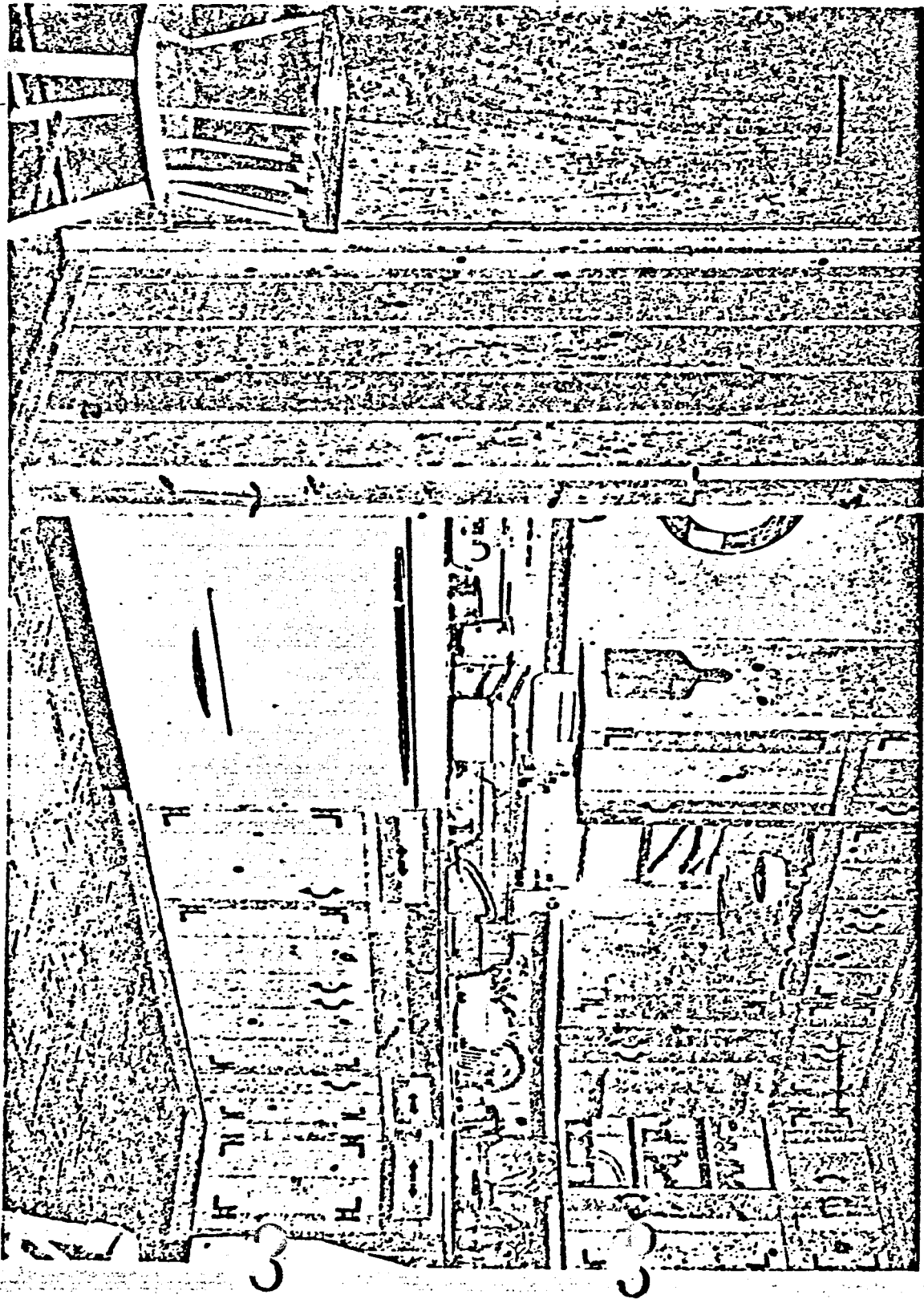
5. LOOKING THROUGH DOOR LEADING TO GARAGE FROM KITCHEN.





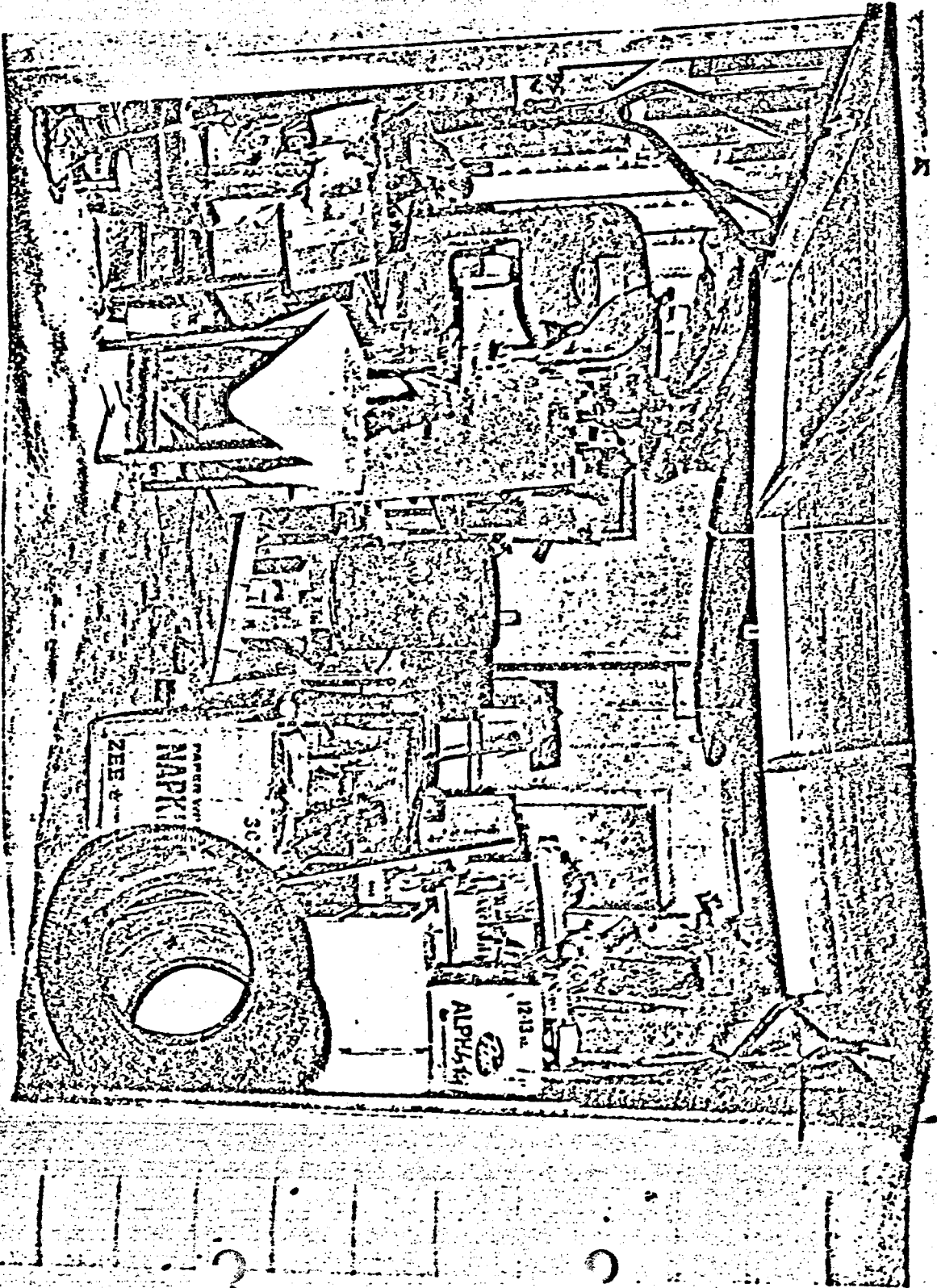
6. DOOR LEADING TO BACK YARD.

Route Map Street Diagram Randle Home



7. KITCHEN AREA IN PAINE HOME.

8. GARAGE INTERIOR.



Route Map

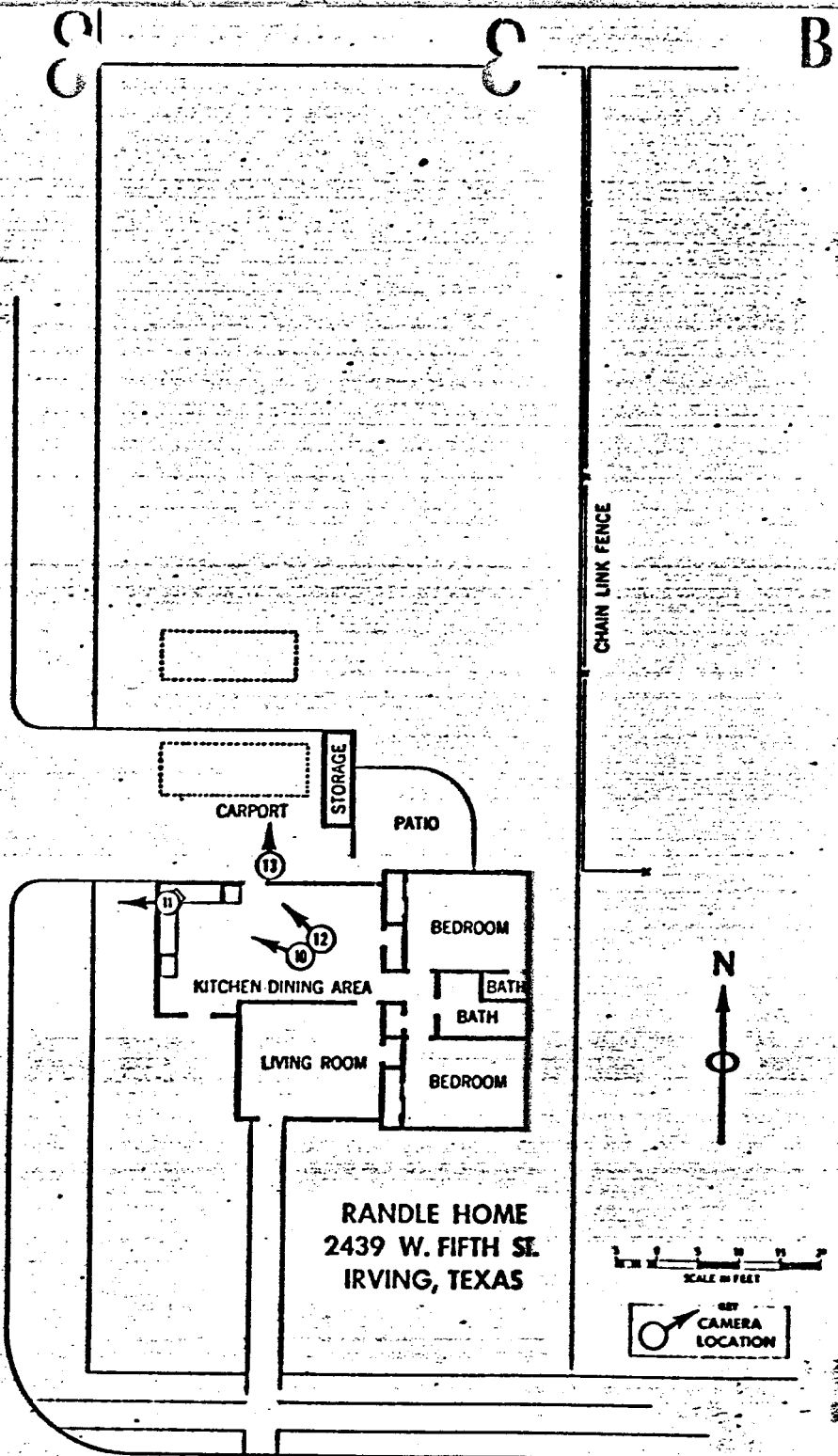
Street Diagram

Randile Home

3

3

WESTBROOK DRIVE

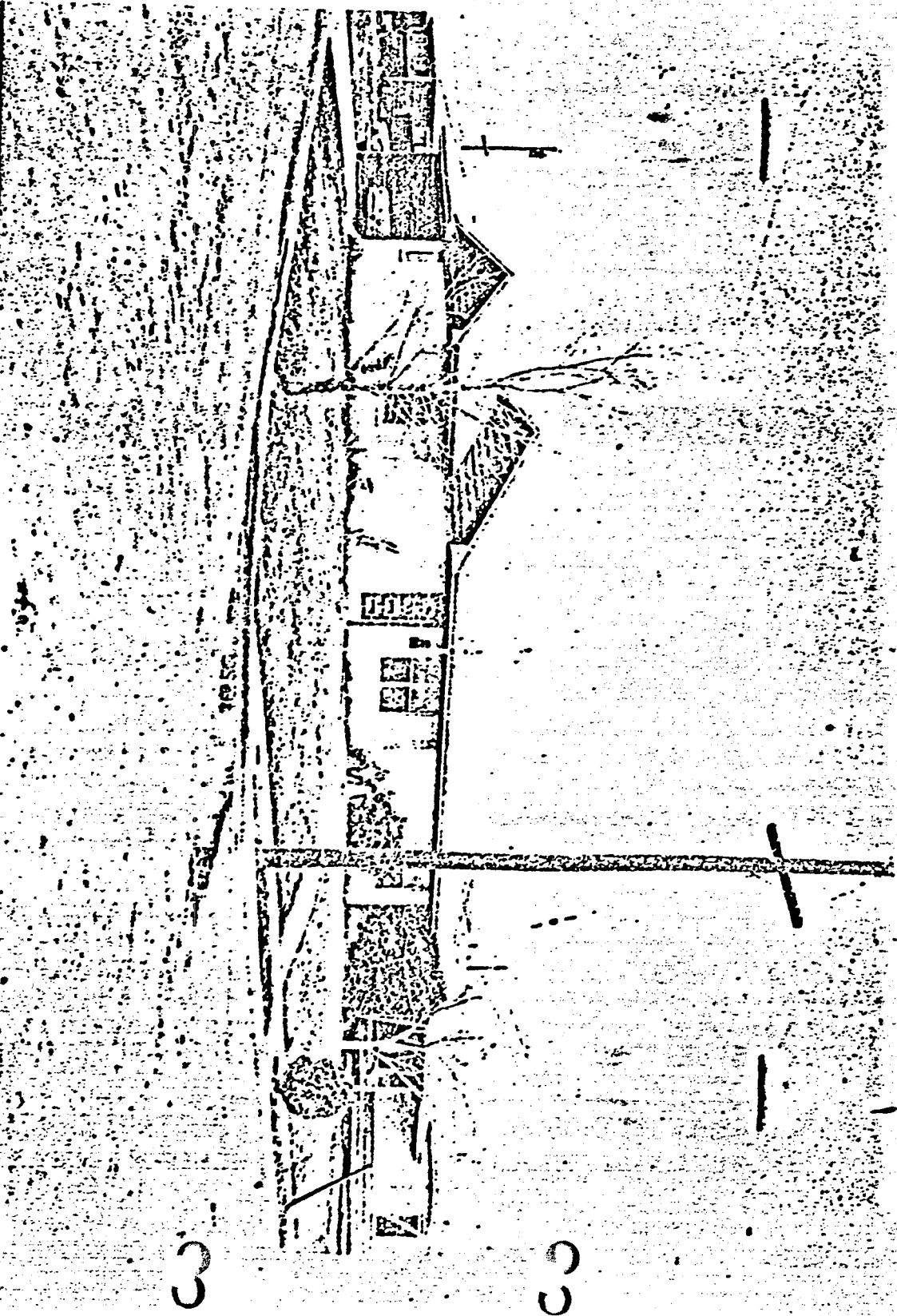


W. FIFTH STREET

Route Map Street Diagram

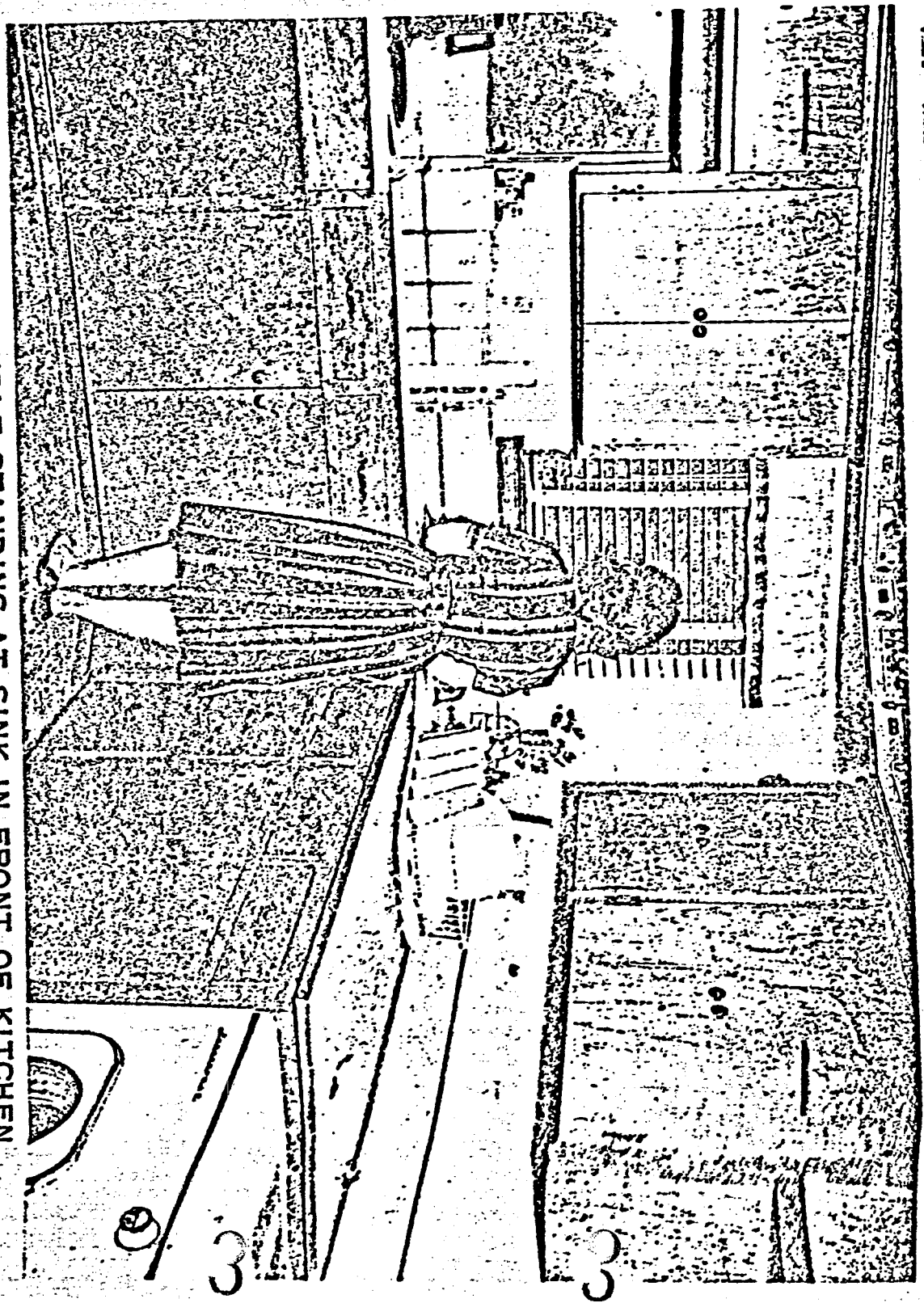


9. CORNER VIEW OF RANDLE HOME.



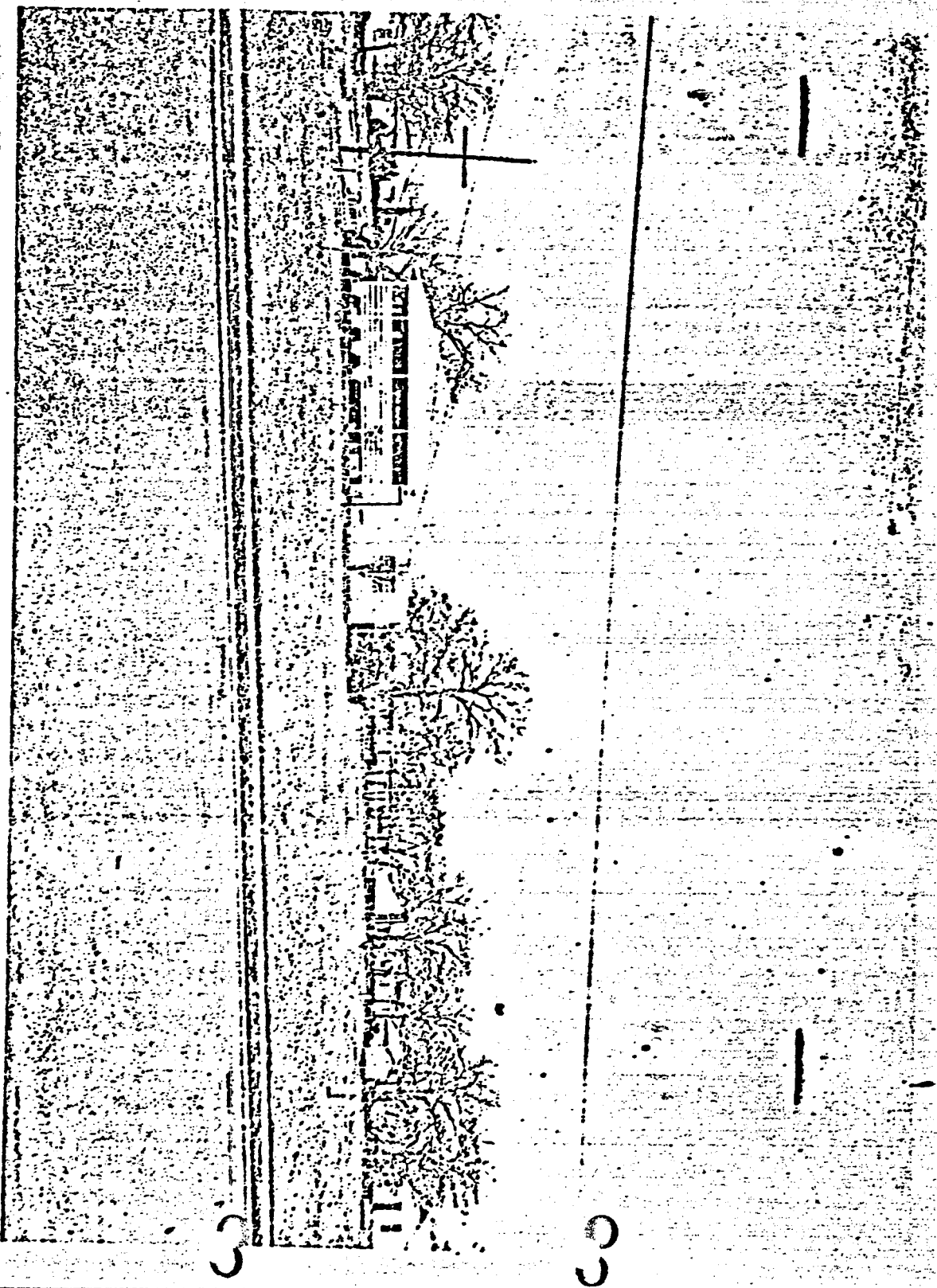
Route Map

Street Diagram



10. MRS. RANDLE STANDING AT SINK IN FRONT OF KITCHEN WINDOW.

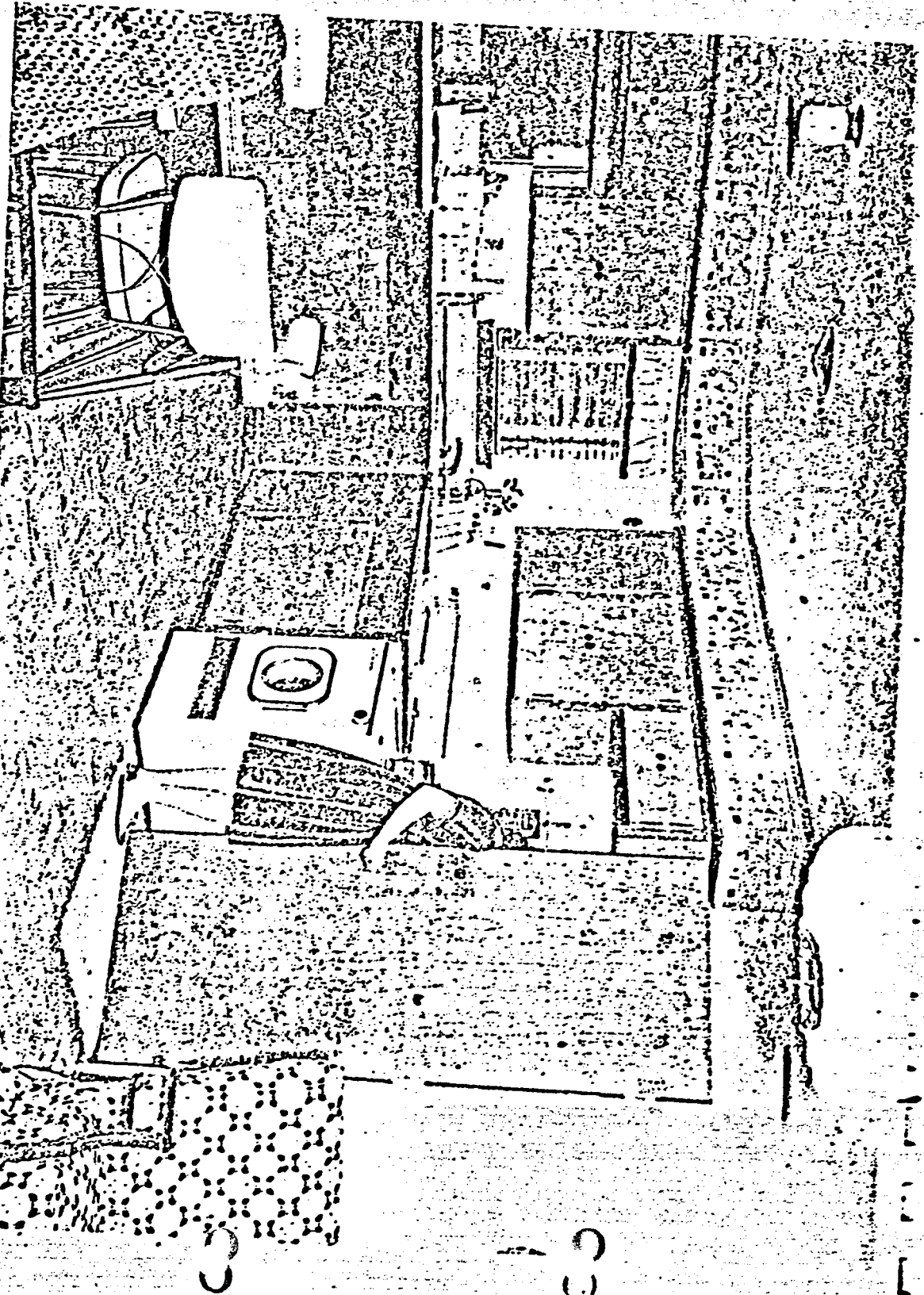
Route Map Street Diagram

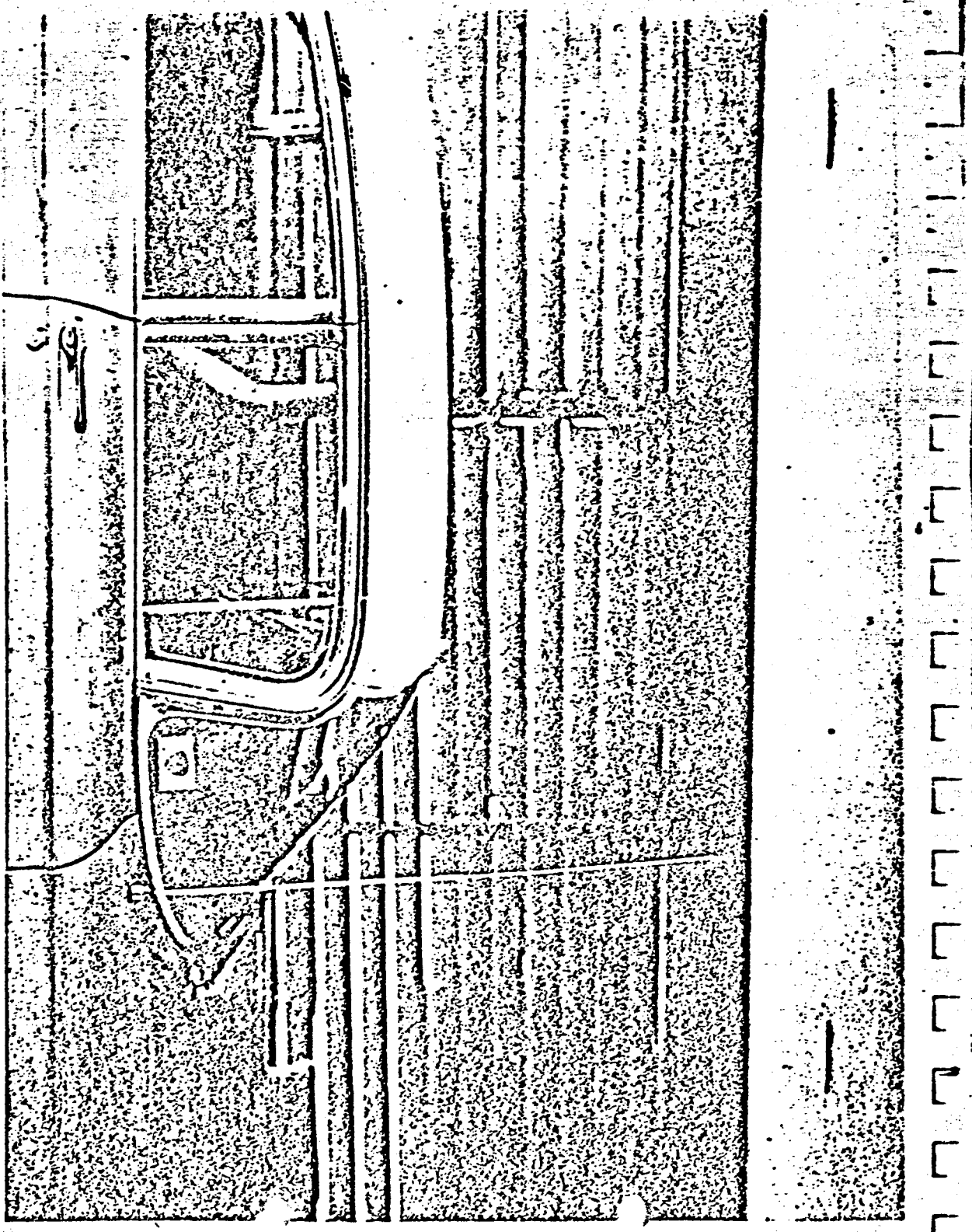


11. MRS. RANDLE'S FIELD OF VIEW FROM KITCHEN WINDOW.

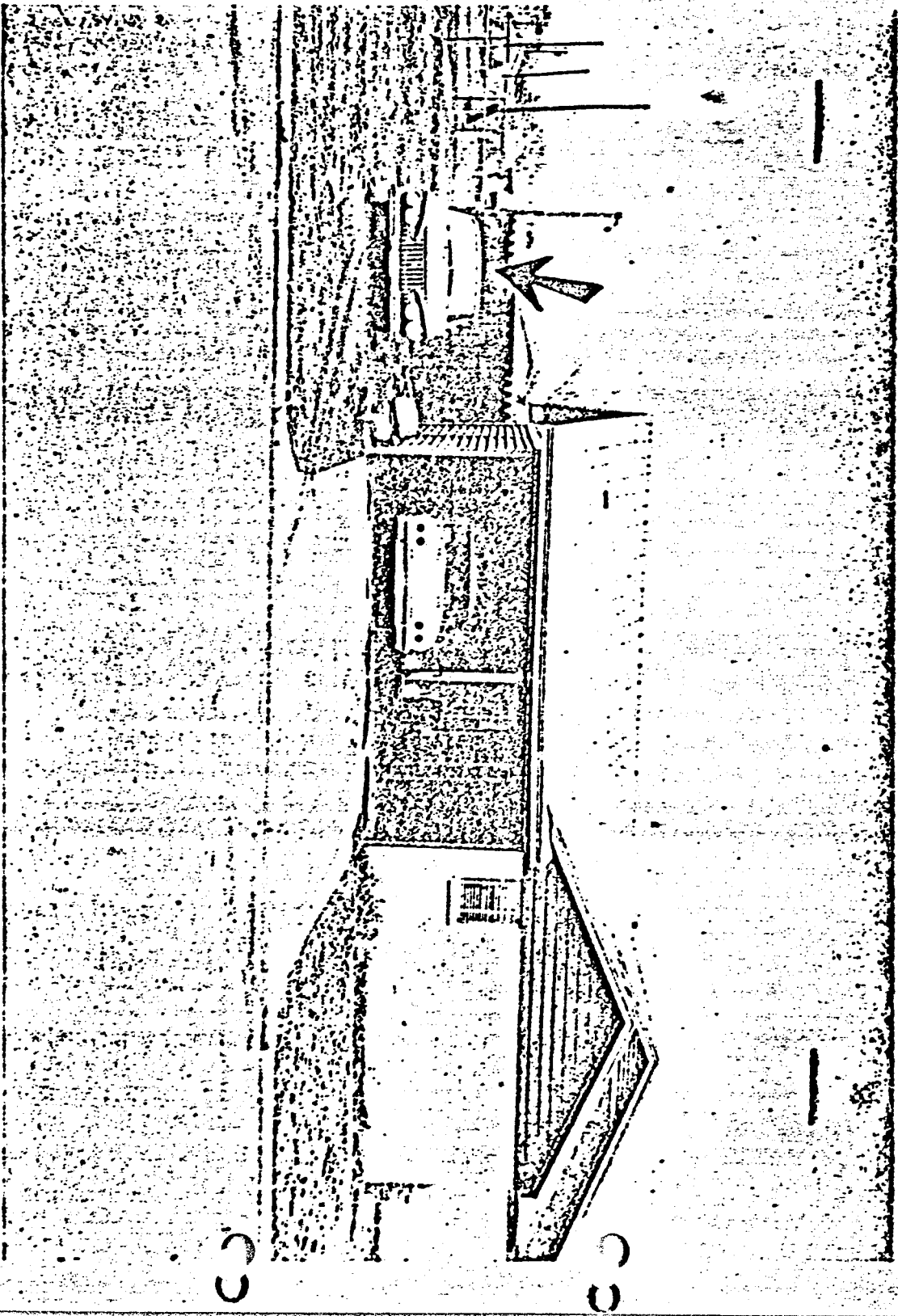
Route Map Street Diagram

12. MRS. RANDLE LOOKING INTO CARPORT FROM KITCHEN DOOR.



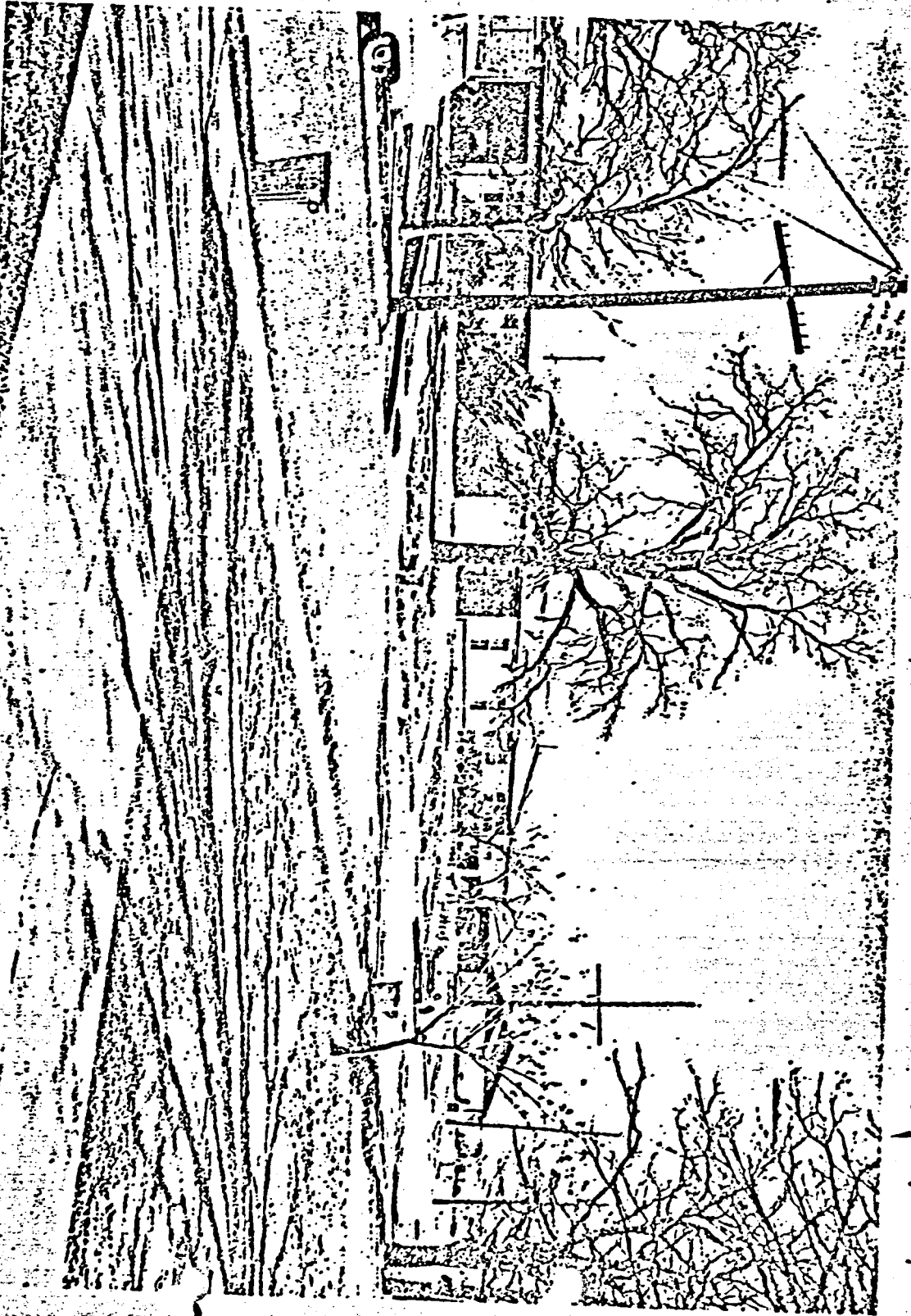


13. INSIDE OF CARPORT AS SEEN BY MRS. RANDLEMAN



14. WEST SIDE OF HOUSE SHOWING CARPORT AND LOCATION OF FRAZIER'S CAR ON MORNING OF NOVEMBER 22, 1963. (ARROW)

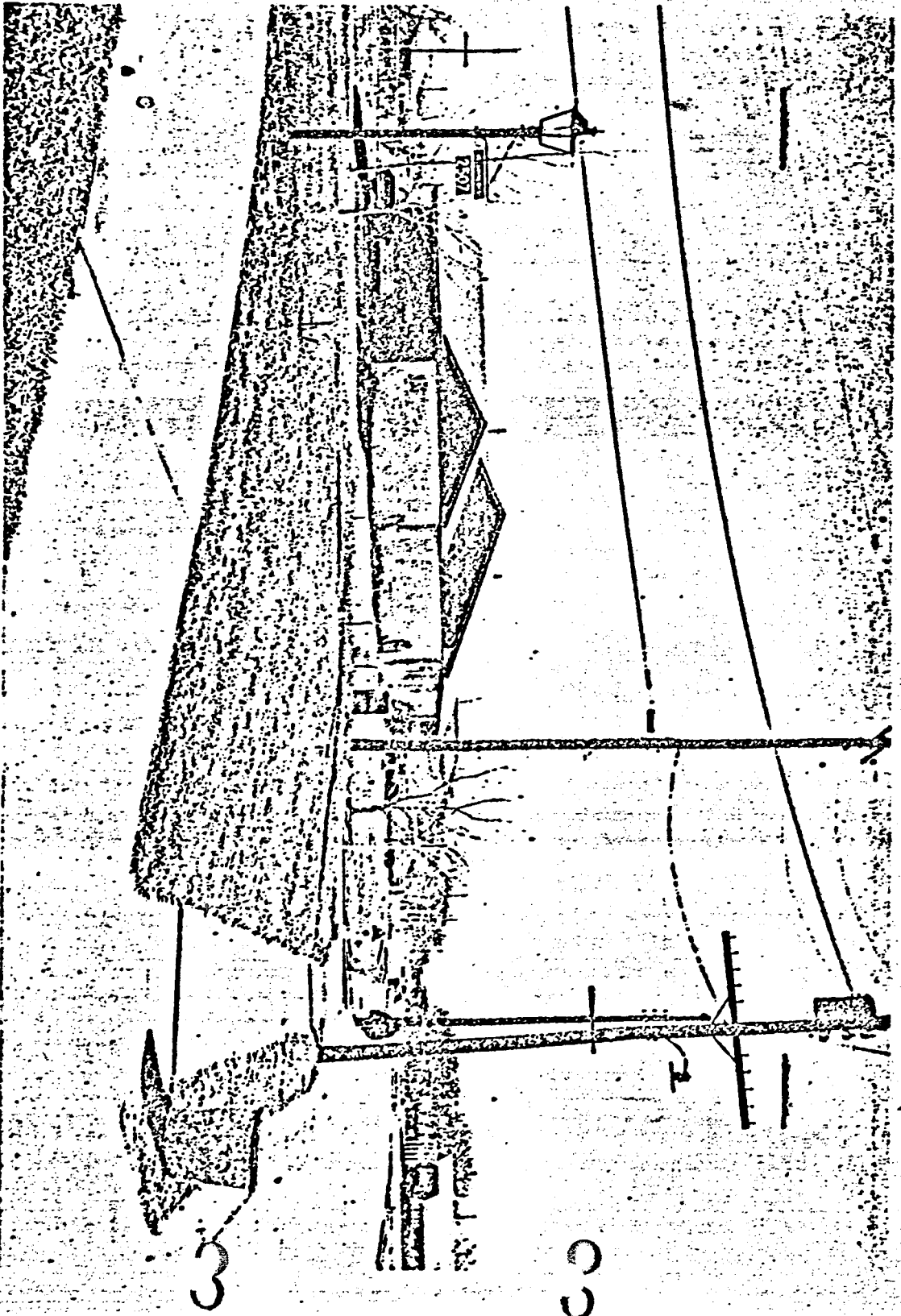
15. VIEW LOOKING NORTHEAST, SHOWING PAINE HOME AT LEFT,
RANDLE HOME AT FAR RIGHT.



Route Map

Street Diagram

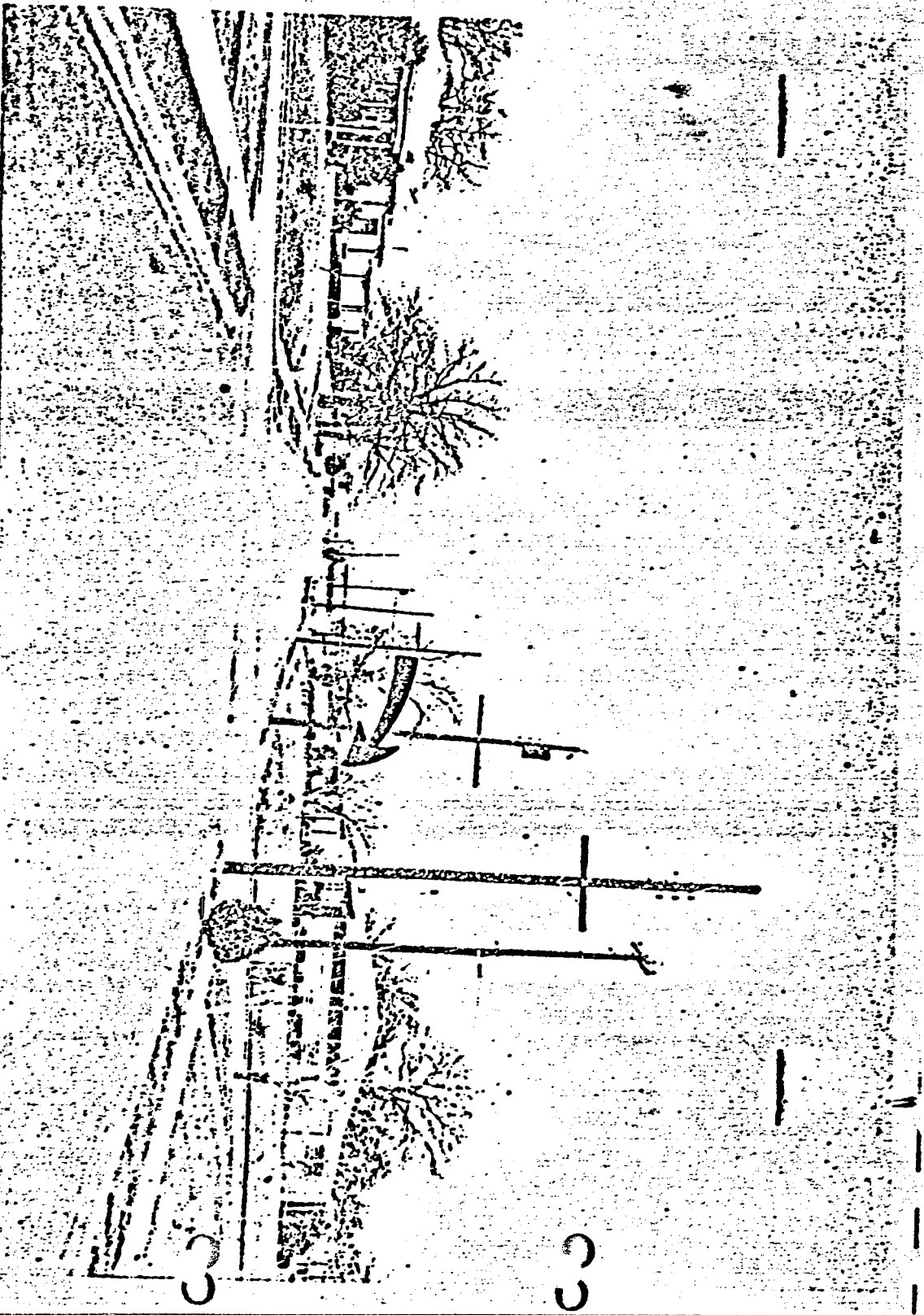
16. VIEW OF RANDLE HOME LOOKING EAST ALONG WEST 5TH STREET.



Route Map

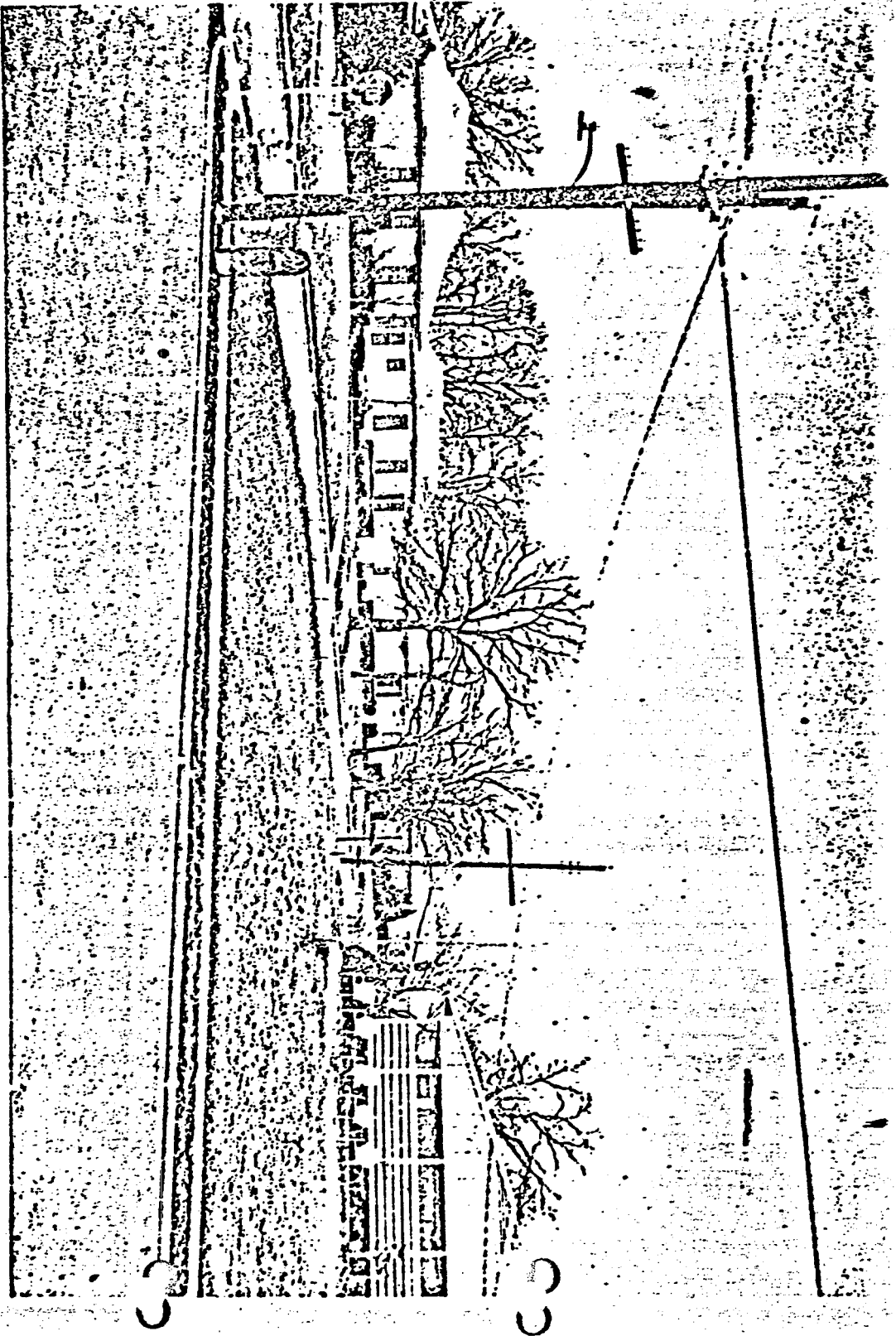
Street Diagram

17. VIEW LOOKING WEST ALONG WEST 5TH STREET TO PAINE HOME. (ARROW)



Route Map Street Diagram

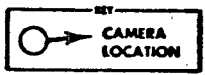
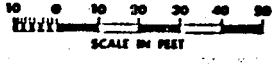
18. INTERSECTION OF WESTBROOK DRIVE AND WEST 5TH STREET.
VIEWED FROM IMMEDIATELY OUTSIDE THE RANDLE KITCHEN
WINDOW.



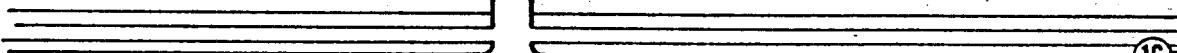
Route Map

Street Diagram

PAINÉ AND RANDLE HOMES IRVING, TEXAS



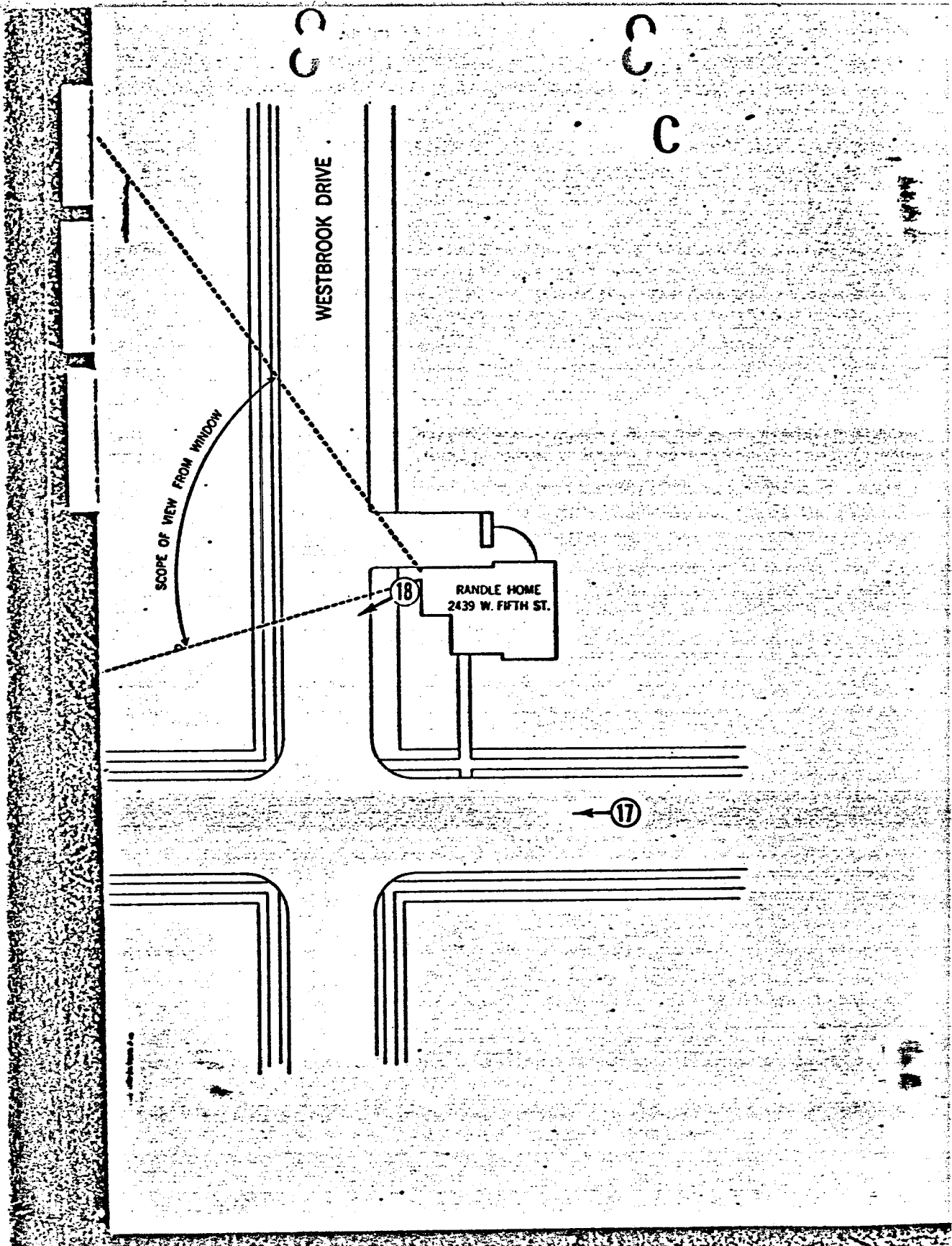
PAINÉ HOME
2515 W. FIFTH ST.



W. FIFTH STREET

15

16



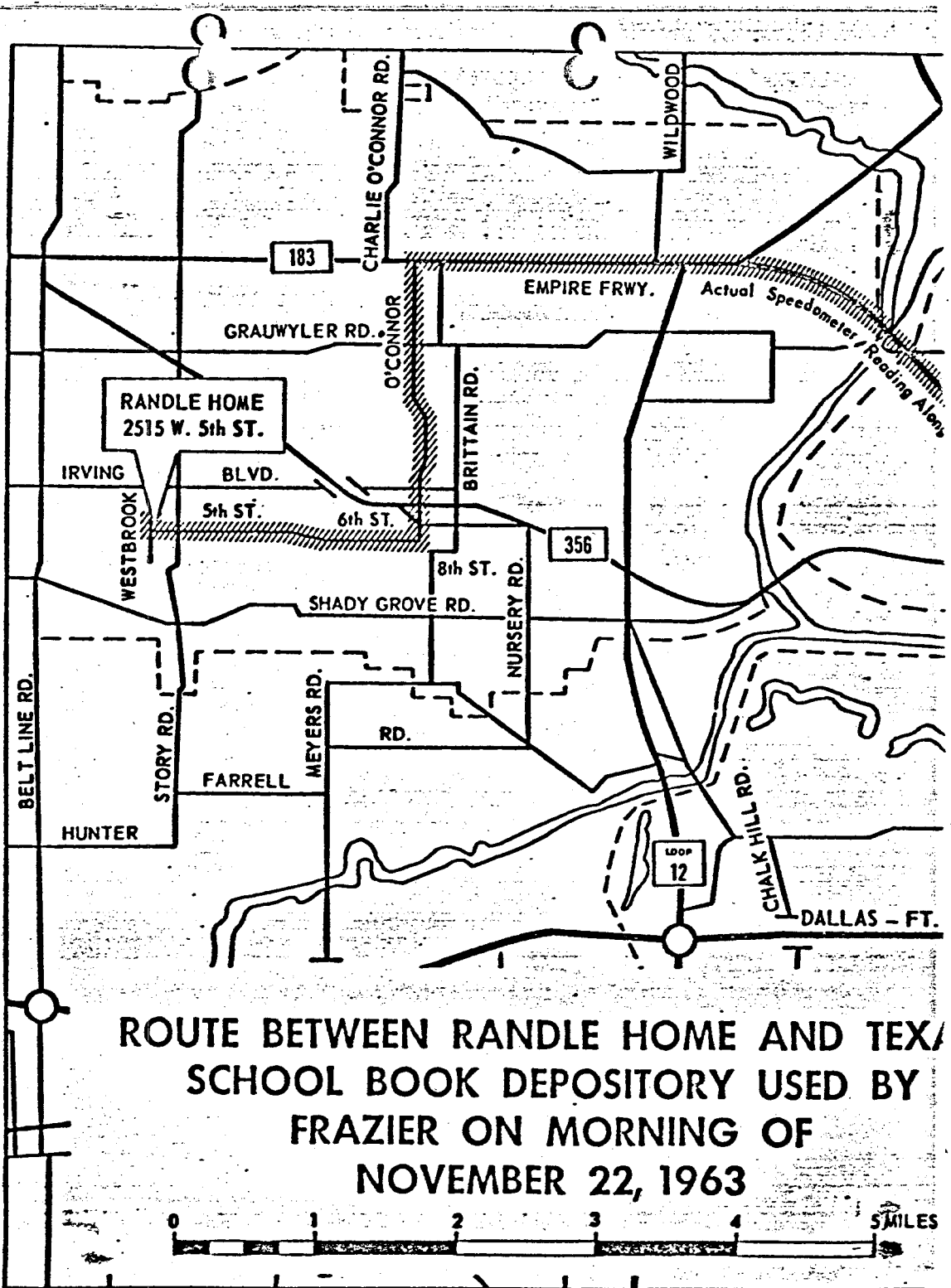
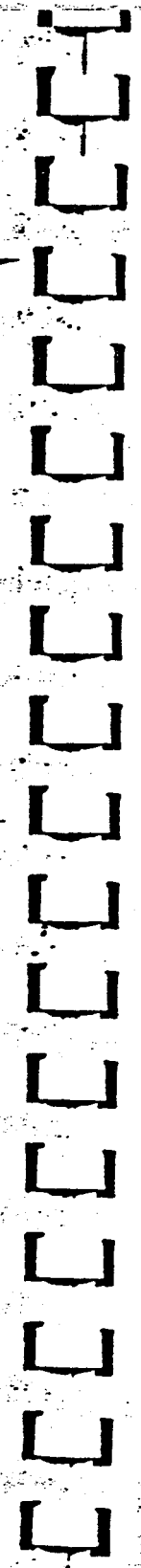
WESTBROOK DRIVE

SCOPE OF VIEW FROM WINDOW

RANDLE HOME
2439 W. FIFTH ST.

18

17



ROUTE BETWEEN RANDLE HOME AND TEXAS SCHOOL BOOK DEPOSITORY USED BY FRAZIER ON MORNING OF NOVEMBER 22, 1963

