

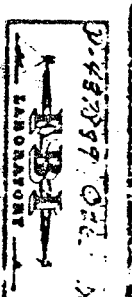
11378G

SAFE DR-1

NOV 30 1963

*From Henry Oswald  
Rm 11-22-63*

*Transfer slip taken  
off Oswald by Sime*



D-35 (10 262-264)

Dallas Transit Company

**FRI. NOV. 22, '63**

THRU CAR  
004459

AM PM

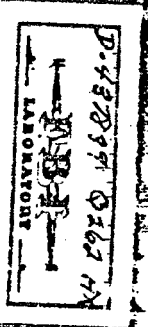
1. BELMONT	17. MT. AUBURN
2. FORT ST.	18. PARKVIEW
3. HAYWOOD	19. ARCADE
4. CROSSROAD	20. SULLY
5. RAYBURN	21. BICENTENARY
6. MT. AUBURN	22. LANTANA
7. PARKVIEW	23. CAPITOL
8. ARCADE	24. WEST SHORE
9. SULLY	25. WAREHISE
10. BICENTENARY	26. VICKERY
11. LANTANA	27. ELWOOD
12. CAPITOL	28. 50 OAKLAND
13. WEST SHORE	29. WILSON
14. WAREHISE	30. WYNNERSON
15. VICKERY	31. FAIR PARK
16. ELWOOD	32. BERNARD

1 0

SHOOPER TRANSFER

ZONE 2 3

D-35



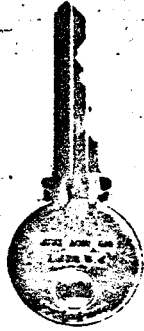
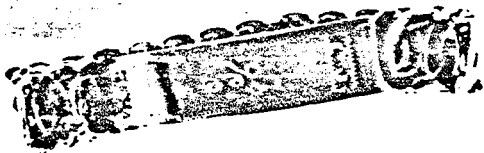
1-22-63  
1:05 PM  
Ex. Boyd

D-35 (Q 262-264)

Hand

D-35

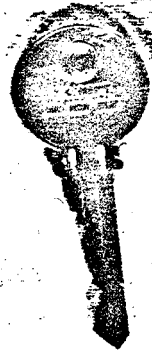
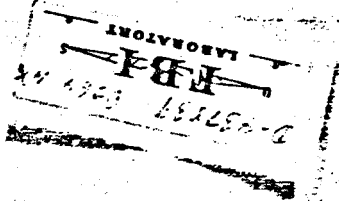
FBI LABORATORY



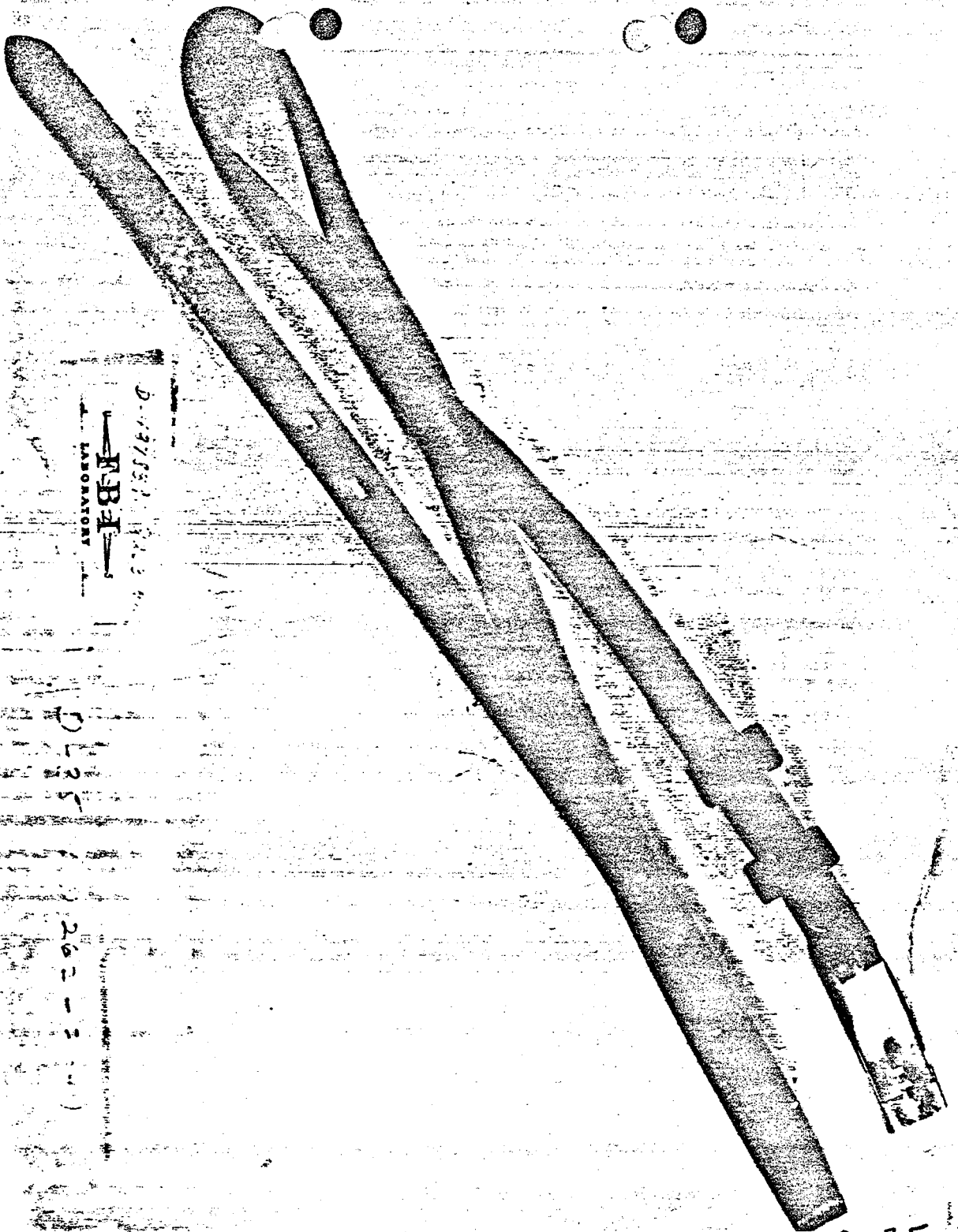
The following information was  
received from the  
FBI on 10/10/55

On 10/10/55, the following information was  
received from the FBI on 10/10/55  
The following information was  
received from the FBI on 10/10/55

D-35 (9262-264)



D-35



D-197531  
FBI  
LABORATORY

D-197531

202-3111

D-35