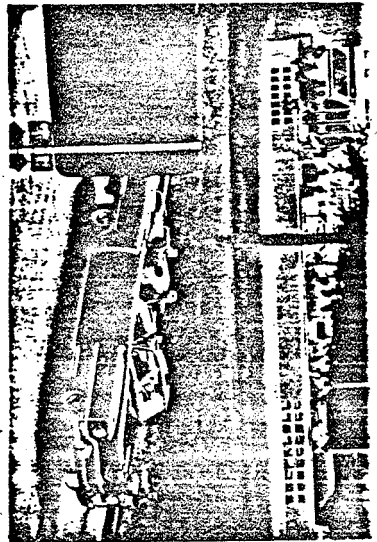
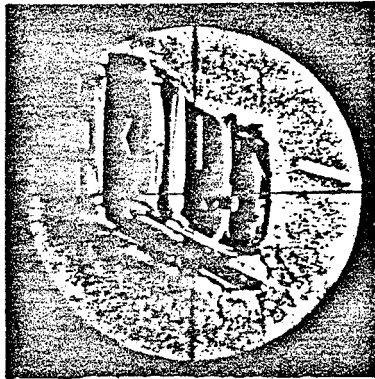


PHOTOGRAPH FROM ZAPRUDER FILM



PHOTOGRAPH FROM RE-ENACTMENT



PHOTOGRAPH THROUGH RIFLE SCOPE

DISTANCE TO STATION C ..... 1540 FT.  
DISTANCE TO RIFLE IN WINDOW ..... 1880 FT.  
ANGLE TO RIFLE IN WINDOW ..... 15.4°  
DISTANCE TO OVERPASS ..... 3280 FT.  
ANGLE TO OVERPASS ..... 8.28°

FRAME 231