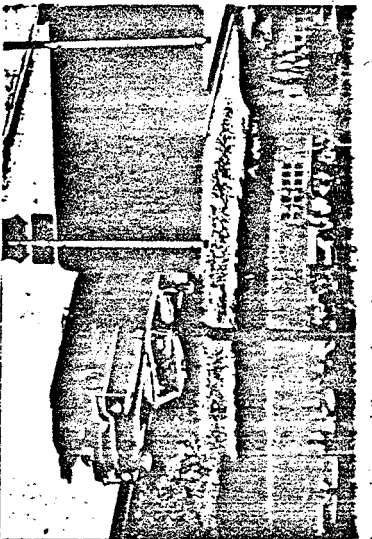
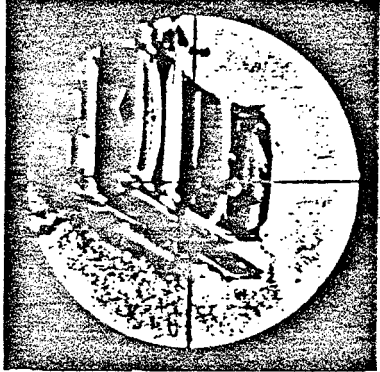


PHOTOGRAPH FROM ZAPRUDER FILM



PHOTOGRAPH FROM RE-ENACTMENT



PHOTOGRAPH THROUGH RIFLE SCOPE

DISTANCE TO STATION E	151.4 FT.
DISTANCE TO RIFLE IN WINDOW	188.8 FT.
ANGLE TO RIFLE IN WINDOW	20.9°
DISTANCE TO OVERPASS	338.4 FT.
ANGLE TO OVERPASS	10.4°

FRAME 222