

MANY WITNESSES claim they heard shots coming from a "grassy knoll" (1) in front of the motorcade. Oswald allegedly fired fatal shots from window of Texas Book Depository (2). President's limousine was at (3) when first shot was fired. If "grassy knoll" theory holds, there must have been more than one assassin.

Russell disagrees with panel report

WASHINGTON (UPI) — The clamor for a new investigation into the assassination of John F. Kennedy seemed certain to increase today with the disclosure that one of the members of the Warren Commission disagreed with some of the panel's findings.

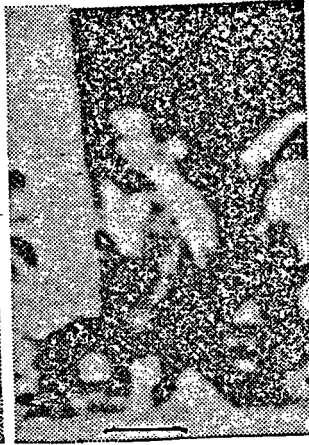
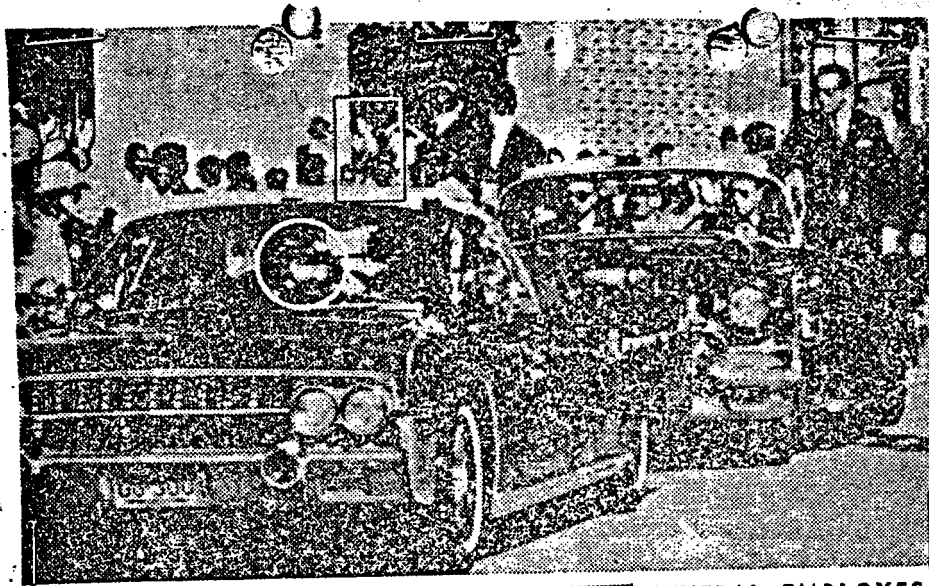
Sen. Richard B. Russell, D-Ga., became the first commission member to publicly disagree with the report and its findings Tuesday when he said he was "not satisfied with some

of the answers" it gave.

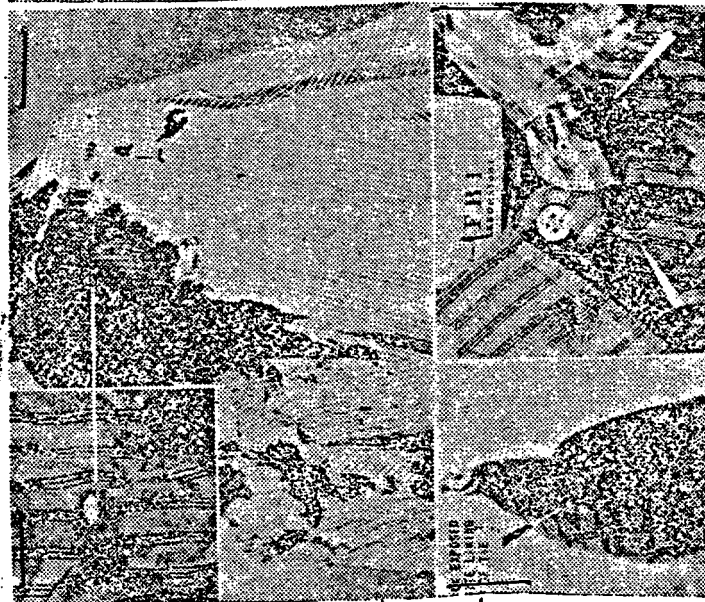
In a related development, Texas Gov. John B. Connally, who was wounded seriously at the time of the assassination, scheduled a news conference at his Austin office to answer questions about the investigation.

Connally has differed in at least one respect with the Warren Commission report — that dealing with how many shots were fired. He believes he was hit by a different bullet from the first slug, which passed through Kennedy's neck.

The Commission's contention was that the same bullet hit Kennedy and Connally.



SEVERAL EMPLOYEES watched parade from Depository steps, one of whom was alleged to resemble Oswald (see box, above). Warren Commission determined that this employe was Billy Lovelady, who identified himself. But people are still making comparisons between Oswald and the man in the picture (see blowup, right).



THESE PHOTOS of President's clothing were not included in Warren report. Bullet hole in back of shirt is 5 3/4 inches below collar top. Jacket bullet hole (not shown) is 5 3/4 inches below collar top. Position of wound in body was, however, considerably higher as detailed in Warren Commission medical drawing.