

UNITED STATES GOVERNMENT

# Memorandum

TO : Director, FBI (105-82555)

FROM : Legat, Mexico City (105-3702) (P)

SUBJECT: LEE HARVEY OSWALD, aka  
IS - R - CUBA

DATE: 3/16/64

### ENCLOSURES

Enclosed herewith to the Bureau are 30 copies of a letterhead memorandum, dated and captioned as above, and 2 Zerox copies of a report submitted in Spanish by Mexican Immigration Inspector JOSE MARIO DEL VALLE under date of November 30, 1963, to the Chief of the Inspection Department of the Mexican Ministry of Gobernacion (Interior). The translation to English of the foregoing document is incorporated in the enclosed letterhead memorandum.

### REFERENCES

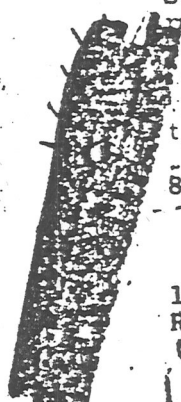
Bureau cable dated 3/12/64, and Mexico City letter and letterhead memorandum dated 3/12/64.

### ADMINISTRATIVE

In accordance with Bureau instructions recorded in Bureau cable of reference, the report which resulted from investigation by the Mexican Government in the area of Nuevo Laredo, Tamaulipas, was obtained for translation and submission to the Bureau. This report previously had been reviewed by liaison Agents of this office and it had not been considered that it contained any information which was not already available to this office and the Bureau. In view of the considerable doubt which has arisen with respect to OSWALD's means of travel from Mexico City to the United States...

- 8 - Bureau (Encs. 32)
  - (1 - Liaison Section)
  - (2 - Dallas, 100-10461)
  - (2 - San Antonio, 105-2909)
- 1 - Mexico City

RLJ:jhk  
(9)



EX-100

64 MAR 20 1964  
 X 3 ENCLOSURE  
 X LHM to Pres Com  
 2 cc to Pres Com letter  
 3/26/64  
 105-3702-455  
 2 cc retained (LHM, 6/4/64)  
 3 MAR 20 1964  
 Remains dated signed  
 MC 105-3702-455

MC 105-3702

States, it now appears that the results of inquiries by the Mexican Immigration Department Inspector and his assurances that several errors were made by Immigration personnel at the border in handling OSWALD's entrance to and departure from Mexico become of value and interest to this investigation.

With respect to observations by Inspector DEL VALLE concerning tourist cards which were issued by the Mexican Consulate at New Orleans immediately prior to and following OSWALD's obtaining his tourist card, it is noted that this and much more complete information appears on page 573 of the Dallas report of SA WARREN C. DE BRUEYS dated 12/2/63; therefore, no leads have been set out for New Orleans to locate and interview the persons listed by Inspector DEL VALLE in his report.

With regard to the reference by DEL VALLE to a list of Automobile Temporary Import Permits which were issued on 9/26/63, at Nuevo Laredo, Tamaulipas, this was reviewed and it was not considered to obtain information of value to this investigation in view of the fact that positive information with respect to subject's means of travel from Nuevo Laredo to Mexico City has been obtained.

SOURCES

The confidential source abroad referred to in the enclosed letterhead memorandum is MEX

The translation from Spanish of the Mexican Government report was prepared by SA ROLF L. LARSON, who also interviewed Inspector JOSE MARIO DEL VALLE in connection with this matter.

MC 105-3702

CLASSIFICATION

The enclosed letterhead memorandum has been classified "CONFIDENTIAL" in order to protect the Bureau's foreign operations.

COPIES

Two copies of this letter and of the enclosed letterhead memorandum have been designated for the domestic office of origin, Dallas, and two copies thereof for the San Antonio office which continues to conduct investigation with respect to the subject's means of travel to and from Mexico City.

LEADS

MEXICO CITY OFFICE

At Mexico, D. F.

Will continue investigation of all leads currently outstanding and which may develop in connection with this case, reporting results thereof promptly.